

2003 SEA RAY 550 SUNDANCER — SEA RAY



Судостроитель: SEA RAY

Год постройки: 2003

Модель: Cruising Yacht

Цена: ЦЕНА ЯХТЫ ПО ЗАПРОСУ

Местонахождение: United States

Длина общая: 55' 8" (16.97m)

Ширина: 15' 11" (4.85m)

Макс. осадка: 4' 0" (1.22m)

Крейс. скорость: 28 Kts. (32 MPH)

Макс. скорость: 33 Kts. (38 MPH)

Купить 2003 Sea Ray 550 Sundancer — SEA RAY а также выбрать подходящую вам яхту из нашего каталога яхт вам поможет опытный яхтенный брокер Андрей Шестаков. На сегодняшний день компания Shestakov Yacht Sales Inc. имеет большое количество яхт в собственном списке продаж, а также тесно сотрудничает со всеми крупными яхтенными производителями по всему миру. Для того чтобы купить яхту 2003 Sea Ray 550 Sundancer — SEA RAY а также проконсультироваться по любому вопросу связанному с покупкой, продажей, чартером яхт позвоните по телефону **+7(918)465-66-44**.

ОГЛАВЛЕНИЕ

ОГЛАВЛЕНИЕ	2
ХАРАКТЕРИСТИКИ	6
Обзор	6
Основная информация	6
Размеры	6
Скорость, вместимость и масса	7
Размещение	7
Корпус и палуба	7
Информация о двигателе	7
ПОДРОБНОЕ ОПИСАНИЕ	8
Overview	8
Исключения	11
Отказ от ответственности	11
ФОТОГРАФИИ	12
2	12
3	12
4	12
5	12
6	13
7	13
8	13
9	13
10	14
11	14
12	14
13	14
14	15
15	15

16	15
17	15
18	16
19	16
20	16
21	16
22	17
23	17
25	17
24	17
26	18
27	18
28	18
29	18
30	19
31	19
32	19
33	19
34	20
35	20
36	20
37	20
38	21
39	21
40	21
41	21
42	22
43	22
44	22

45	22
46	23
47	23
48	23
49	23
50	24
51	24
52	24
53	24
54	24
55	24
56	25
57	25
58	25
59	25
60	25
61	25
62	26
63	26
65	26
64	26
66	26
67	26
68	27
69	27
70	27
71	27
72	27
73	27

74	28
75	28
76	28
77	28
78	28
79	28
80	28
81	28
82	29
83	29
84	29
85	29
86	29
87	29
88	29
КОНТАКТЫ	30
Контактная информация	30
Телефоны	30
Время работы	30
Адрес	30

ХАРАКТЕРИСТИКИ

Обзор

2003 Sea Ray 550 Sundancer with 800 MANS listed for sale. Immaculate only begins to describe this spacious, express cruiser. Captain maintained, cleaned and detailed consistently and has only 1100 hours, with 1700 hours on the generator. Some new additions just done include canvas cockpit sun shade, 4 color changing underwater lights in transom, cockpit flat-screen TV with new soundbar and Strataglass front windshield with side curtains. This is a perfect weekend or long-range vessel with a great deal of creature comforts. Down below in the Galley and throughout the vessel she has brand new carpet which compliments the Corian countertops and cherry cabinetry. The galley is also equipped with an additional built-in freezer in addition to a regular refrigerator freezer and a brand new microwave. There is a large Flatscreen TV in the Salon, with large table and a beautiful settee.

Основная информация

Тип судна: Cruising Yacht

Подкатегория: Cabin Cruiser

Модельный год: 2003

Год постройки: 2003

Страна: United States

Размеры

Длина общая: 55' 8" (16.97m)

Ширина: 15' 11" (4.85m)

Макс. осадка: 4' 0" (1.22m)

Трапы: 13' 4" (4.06m)

Длина привального бруса: 55' 0"
(16.76m)

Скорость, вместимость и масса

Крейс. скорость: 28 Kts. (32 MPH)

Макс. скорость: 33 Kts. (38 MPH)

Водоизмещение: 39000 Pounds

Вместимость воды: 150 Gallons

Вместимость сточного бака: 68 Gallons

Объем топливного бака: 300 Gallons

Размещение

Всего кают: 2

Всего коек: 2

Всего ком. состава: 2

Корпус и палуба

Материал корпуса: Fiberglass

Информация о двигателе

Двигатели: 2

Производитель: MAN

Тип двигателя: Inboard

Тип топлива: Diesel

ПОДРОБНОЕ ОПИСАНИЕ

Overview

Immaculate just begins to describe this spacious, fast express cruiser. "Trouble" is Captain maintained, cleaned and detailed consistently and has only 1100 hours and the 1000 hour service has been done. Some new additions just done include canvas cockpit sun shade, 4 color changing underwater lights in transom, cockpit flat screen TV with new sound bar and Strataglass front windshield and side curtains. This is a perfect weekend or long range vessel with a great deal of creature comforts below. Down below in the Galley and throughout the vessel she has brand new carpet which complement the Corian counter tops and cherry cabinetry. The galley is also equipped with an additional built in freezer in addition to a regular refrigerator freezer and a brand new microwave. There is a large Flat screen TV in the Salon, with large table and beautiful settee. The boat shows like new and can be seen by appointment only at our office in Fort Lauderdale. Accommodations - There is built in U-shaped cockpit seating, an electric sun pad, a Hi-Lo cockpit table, and a wet bar with icemaker. Forward is the helm station with European style helms eating and full electronics. Down into the main salon with its beautiful cherry wood interior, custom Hi-Lo table, upgraded new carpet and fabrics. The leather salon sofa is of course electric. The entertainment center features a stereo system with DVD, DSS satellite and a large flat screen Television. The stunning and perfectly equipped galley has Corian countertops and under the counter is installed an extra stainless steel freezer in lieu of the washer/dryer combo. Aft to Starboard is the master stateroom with full walk around queen size bed, plenty of closet and storage space, a very spacious master head with flat screen television. All the way forward is the VIP stateroom also with queen berth and private head which has a second door into the salon for daytime use.

- Large Flat Screen Television
- Wine and Liquor Cabinet
- Couch w/electronically operated slide-out bed
- Fireboy smoke alarms and fire detectors
- Sun Shades for all hatches
- Central Vac system
- Carbon Monoxide Monitors
- Galley
- Coffeemaker, 120V (Spacemaker)
- Custom-molded fiberglass countertop w/solid surface cutting board & sink w/single-level Grohe faucet
- Recessed 3-burner stove w/solid surface cover (Kenyon)
- New Microwave 120V (2016)
- Refrigerator/freezer w/icemaker
- Upper and Lower Storage Cabinets

- Glass and dish storage
- Inlaid Burl and Cherry Hi Lo Dining/Coffee Table w/2 extra storage stools
- Gunwale Cabinets-upper
- In-Floor storage
- Under Sofa Storage

Staterooms – Equipped with a 2 stateroom layout with master midship and VIP forward Master Stateroom

- Flat Screen TV
- Queen-size Bed w/Innerspring mattress, pillows, sheets, coordinated spread w/carpeted storage below w/gas-assisted hatch
- Hanging Locker, Full-length cedar-lined w/lights & mirrored doors (2) starboard
- Vanity w/solid surface countertop, beveled mirrors, drawers and storage cabinet.

Master Head

- Bath accessories, Chrome & Gold
- Tile Flooring
- Handrails, Elliptical Stainless Steel
- Shower w/Seat, Adjustable shower wand & circular acrylic door
- Upper Cabinet Storage
- Mirrored Medicine Cabinet
- Surface sink, Grohe Faucet, drawers & storage below

VIP Stateroom

- Flatscreen TV
- Smoke Alarm/Fire Detector
- Queen sized bed w/Innerspring mattress, pillows and sheets
- Coordinated Spread w/drawers & carpeted storage below w/gas assisted hatch
- Mirrored rope locker bulkhead
- Storage cabinet w/drawers- Port

Guest Head

- Bath accessories, Chrome & Gold
- Privacy door- Access from Forward Stateroom
- Privacy door- Access from Salon
- Tile Flooring
- Storage Cabinet w/Beveled Mirrors
- Medicine Cabinet w/Beveled Mirrors
- Vanity w/Molded solid surface countertop w/integral sink, Grohe faucet, drawers and storage below

Mechanical & Electrical Electronics Raymarine E120 with 12.1" Screen, Garmin GPS 4212,

Raymarine ST7001 Auto Pilot, ACR remote spotlight, Bennet Trim Tabs, Sea Ray Systems monitor, Raymarine Handset VHF w/speaker, Vetus Bow Thruster Control, Fusion MS AV600 Stereo System with Speakers and Subwoofer (Cockpit), KVH Satellite TV and Fiquench Fireboy Fire system

- Batteries 8-D w/Boxes 94) & Group 27 for Genset (1)
- Battery Charger/Converter 120V/10 Amp/12V
- Battery Charger/Converter 240V/50 Amp/24V
- Battery Charger Overcurrent Protection
- Battery Equalizer, 50 Amp (2)
- Batter Solenoid Switches 12V (2) 24V (2)
- Cablemaster w/120V/50 Amp/60 cycle Shore Power, 50' Cord & Remote (Glendenning)
- Generator w/remote start and muffler, freshwater cooling, fuel filter, Seacock & Seawater strainer 240V
- Control Station
- High-Water Bilge Alarms
- Bow Thruster 24V
- Compass
- Emergency Engine Stop
- Emergency Start System - Engines
- Fuel (3)
- Gear Temperature
- Voltmeters
- Systems Monitor, Digital LCD - For Engine Diagnostics & Pump Monitoring
- Water Temperature
- Tachometers w/LCD Hour meters (2)
- Shift & Throttle Controls, Dual Hydraulic

Engine Room

- Bilge Pumps, 24V Automatic (1 Aft 1 Fwd)
- Bilge Pumps, 24V Automatic High-Water (1 Bilge, 1 Fwd Cabin)
- Engine Drip Sumps
- Exhaust, Power Pac/Lift System Mufflers
- Fire Extinguishers
- Fire Suppression System- Automatic w/Diesel Shutdown, override & Manual Pull
- Freshwater Cooling
- Insulation- 2" w/Vinyl Barrier
- Oil Changer System- Engines, Transmissions & Generator

Deck Faux Teak Decking Hydraulic swim platform Anchor windlass A.C. in cockpit New Sun Shade for Cockpit Wet bar w/icemaker and separate fridge in cockpit Forward sun pads Cablemaster shorepower cord retrieval system Navigation Lights Heavy duty PVC Rub Rail w/Stainless Steel Insert Windshield- Tempered/Tinted Curved glass w/stainless steel frame, electric front vent & stainless steel support Windshield washer system Windshield Wipers New

Strata Glass Windshield and Side Panels (2016)XM Satellite Radio in Cockpit
COCKPIT SEAT ELECTRICALLY CONVERTS TO SUNPADCockpit

REAR

- Cockpit, self-Bailing fiberglass w/gas assisted engine room service hatch & pivoting stainless steel engine room ladder
- Transom door
- Hardtop, fiberglass w/stainless steel grab rails & overhead lighting w/electronic dimmer
- Hi-Lo Fiberglass Table w/Dedicated storage
- Wet bar w/sink, cooler, removable trash receptacle & storage-- Port
- Icemaker 120V
- Lighting, indirect w/multiple-way switching capability
- Cable TV outlet
- Dual-Voltage Refrigerator 120V/12V
- Euro-Styled Companion Bench
- Custom Euro-Styled Helm Seating w/flip-up thigh-rise bolster, armrests & heavy-duty pedestal w/slide, swivel and Pneumatic vertical adjustment
- Retractable Sun pad - Aft
- 12V AM/FM single CD w/6-disc CD changer

Исключения

При продаже яхты исключаются личные вещи владельца.

Отказ от ответственности

Компания предоставляет описание судна или яхты добросовестно, но не может гарантировать точность этой информации, а также не ручается за техническое состояние. Покупатель должен проинструктировать своих агентов или оценщиков исследовать представленную информацию более подробно, по собственному желанию. Продажа судна или яхты, изменение цены или снятие с продажи будет происходить без предварительного уведомления.

ФОТОГРАФИИ

2



3



4



5



6



7



8



9



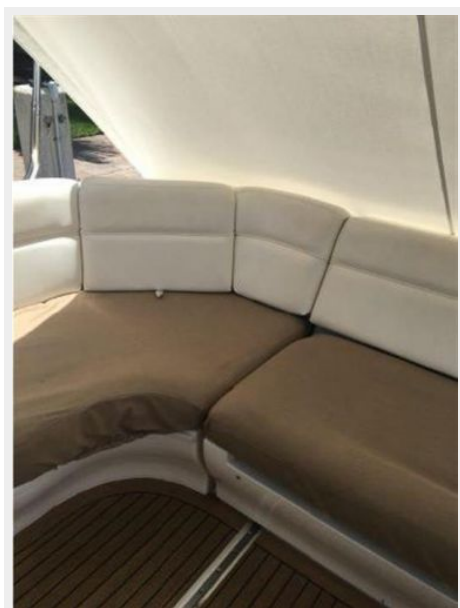
10



11



12



13



14



15



16



17



18



19



20



21



22



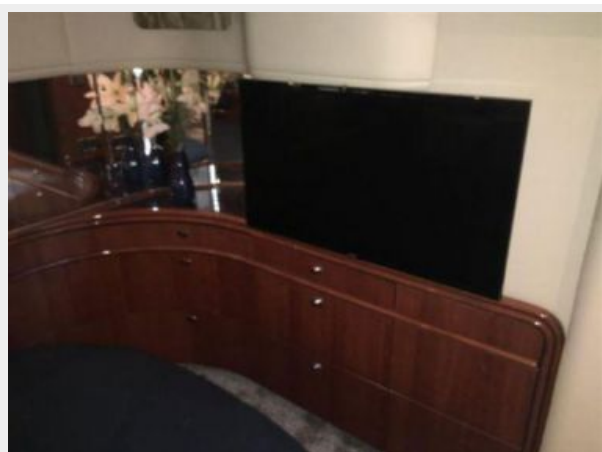
23



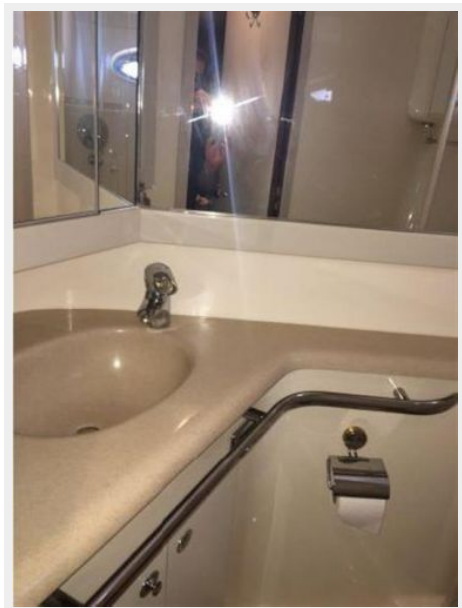
25



24



26



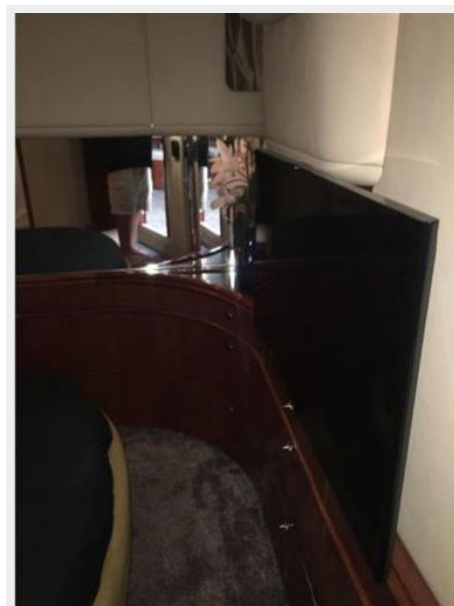
27



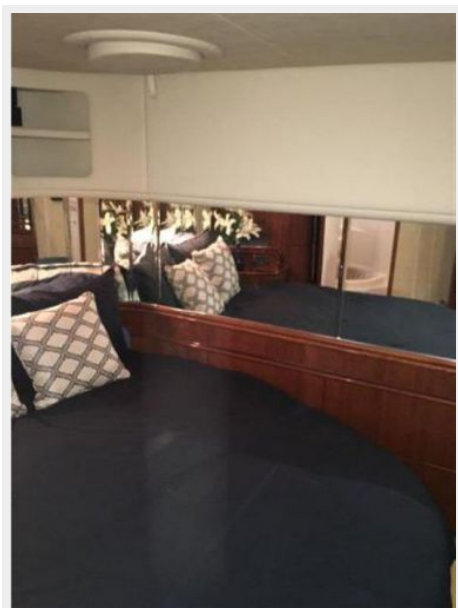
28



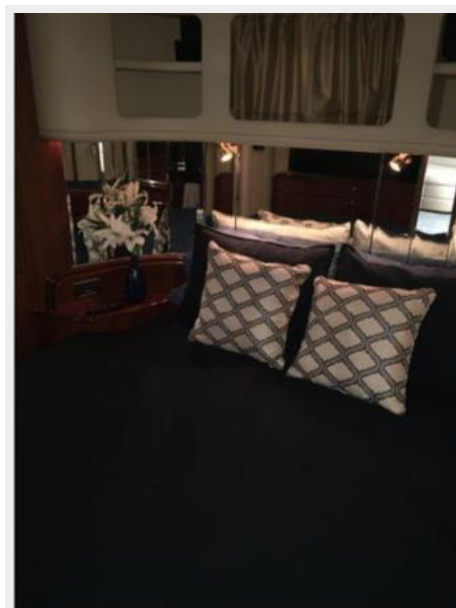
29



30



31



32



33



34



35



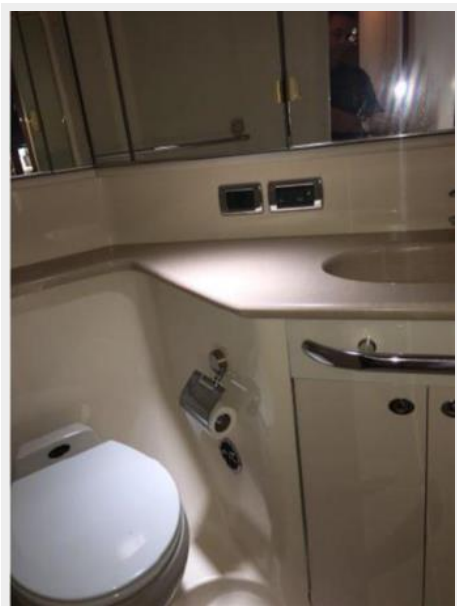
36



37



38



39



40



41



42



43



44



45



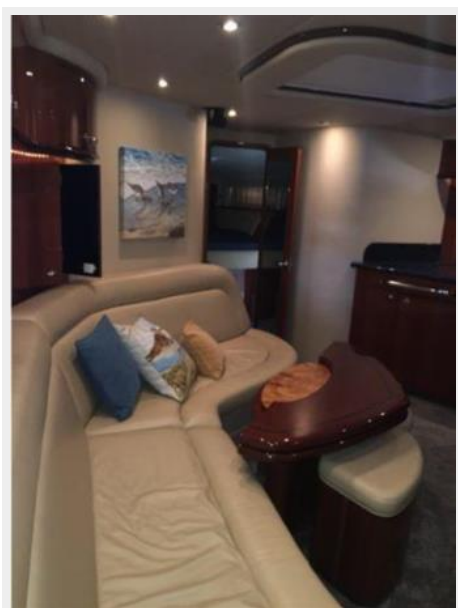
46



47



48



49



50



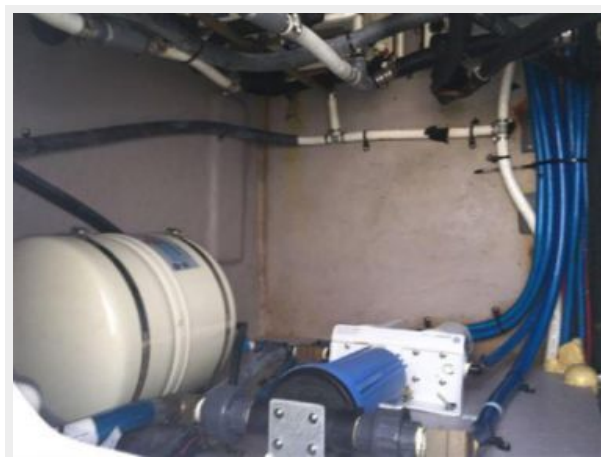
51



52



53



54



55



56



57



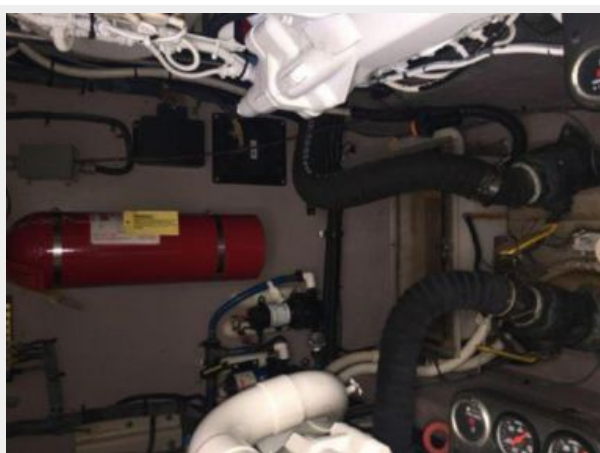
58



59



60



61



62



63



64



65



66



67



68



69



70



71



72



73



74



75



76



77



78



79



80



81



82



83



84



85



86



87



88



КОНТАКТЫ

Андрей Шестаков (Andrey Shestakov) – ведущий яхтенный брокер отдела продаж яхт и судов компании Shestakov Yacht Sales Inc. Официальный представитель Shestakov Yacht Sales Inc. для русскоговорящих клиентов в центральном офисе компании в Майами/Форт Лодердейл/Флорида/США.

Контактная информация

Email: andrey@shestakovyachtsales.com

Web: shestakovyachtsales.com

Телефоны

Краснодарский край: **+7(918)465-66-44**

США, Майами, Флорида: **+1(954)274-4435**

Время работы

Понедельник – Суббота: **9:00 - 21:00**
EDT

Воскресенье: **Закрито**

Адрес



Harbour Towne Marina, 850 NE 3rd St,
STE 213, Dania, FL 33004