

REQUIESCENCE — BENETEAU



Судостроитель: BENETEAU

Год постройки: 2003

Модель: Крейсерская яхта

Цена: **ЦЕНА ЯХТЫ ПО ЗАПРОСУ**

Местонахождение: United States

Длина общая: 39' 4" (11.99m)

Ширина: 13' 0" (3.96m)

Макс. осадка: 5' 1" (1.55m)

Купить **Requiescence — BENETEAU** а также выбрать подходящую вам яхту из нашего каталога яхт вам поможет опытный яхтенный брокер Андрей Шестаков. На сегодняшний день компания **Shestakov Yacht Sales Inc.** имеет большое количество яхт в собственном списке продаж, а также тесно сотрудничает со всеми крупными яхтенными производителями по всему миру.

Для того чтобы купить яхту **Requiescence — BENETEAU** а также проконсультироваться по любому вопросу связанному с покупкой, продажей, чартером яхт позвоните по телефону **+7(918)465-66-44**.

ОГЛАВЛЕНИЕ

ОГЛАВЛЕНИЕ	2
ХАРАКТЕРИСТИКИ	5
Обзор	5
Основная информация	5
Размеры	5
Скорость, вместимость и масса	5
Размещение	5
Корпус и палуба	5
Информация о двигателе	6
ПОДРОБНОЕ ОПИСАНИЕ	7
Overview	7
Исключения	13
Отказ от ответственности	13
ФОТОГРАФИИ	14
photo 02	14
photo 03	14
photo 04	14
photo 05	14
photo 06	14
photo 07	14
photo 08	15
photo 09	15
photo 10	15
photo 11	15
photo 12	15
photo 13	15
photo 14	16
photo 15	16

photo 16	16
photo 17	16
photo 18	16
photo 19	16
photo 20	17
photo 21	17
photo 22	17
photo 23	17
photo 24	17
photo 25	17
photo 26	18
photo 27	18
photo 28	18
photo 29	18
photo 30	18
photo 31	18
photo 32	19
photo 33	19
photo 35	19
photo 34	19
photo 36	19
photo 37	19
photo 38	20
photo 39	20
photo 40	20
photo 41	20
photo 42	20
photo 43	20
photo 45	21

photo 44	21
КОНТАКТЫ	22
Контактная информация	22
Телефоны	22
Время работы	22
Адрес	22

ХАРАКТЕРИСТИКИ

Обзор

Beneteau 393 " Requiescence" is a two cabin, two head version with the desirable storage credenza in the salon. She is in nice condition with a lightly used interior and is a must-see for anyone looking for a spacious and comfortable cruising boat in the 40' range.

Основная информация

Тип судна: Крейсерская яхта

Модельный год: 2003

Год постройки: 2003

Страна: United States

Размеры

Длина общая: 39' 4" (11.99m)

Длина по ватерлинии: 38' 2" (11.63m)

Ширина: 13' 0" (3.96m)

Макс. осадка: 5' 1" (1.55m)

Трапы: 51' 6" (15.70m)

Длина привального бруса: 39' 0"
(11.89m)

Скорость, вместимость и масса

Водоизмещение: 17152 Pounds

Объем топливного бака: 36 Gallons

Размещение

Всего кают: 2

Всего ком. состава: 2

Корпус и палуба

Материал корпуса: Fiberglass

Информация о двигателе

Двигатели: 1

Производитель: westerbeke

Модель: 44A

Тип двигателя: Inboard

Тип топлива: Diesel

ПОДРОБНОЕ ОПИСАНИЕ

Overview

ENGINE

- Westerbeke 44A, 42 hp. Diesel, 696 Hours
- Shaft diameter 30 mm
- Sound-proofing foam in engine compartment
- Engine panel on cockpit coaming
- Engine throttle lever on steering console
- Stainless steel propeller shaft with GRP protection molded into hull
- Shaft diameter 30 mm
- 3 blade feathering propeller
- Engine bed integrated into hull liner
- 36 Gallon Fuel Storage

INTERIOR LAYOUT COMPANIONWAY

- 2 companionway plexi hatchboards
- Hinged two-part GRP companionway steps for access to engine
- 4 curved moulded GRP steps

SAILS

- Neil Pryde bi-radial Dacron 140 % roller furling genoa with anti-UV strip and Neil Pryde multi track foam luff system
- Neil Pryde bi radial Dacron roller furling mainsail

RIGGING

- Deck-stepped anodized aluminum mast with stainless steel support post inside saloon
- 2 sets of aft-swept spreaders
- Stainless steel standing rigging: cap shrouds, lower shrouds, forestay, baby stay and twin backstays
- Anodized aluminum boom
- Furling genoa with drum above deck
- Main halyard
- Genoa halyard with jammer on mast
- Main boom topping lift
- Main sheet with block & tackle
- system Genoa sheets
- Rigid boom vang adjustable from cockpit
- In-mast furling
- Clew outhaul

DECK EQUIPMENT

- Stainless steel stem fitting with offset anchor roller
- Self-draining chain locker
- Anodized aluminum toe-rail
- 4 aluminum roller fairleads on toe-rail
- 6 aluminum mooring cleats
- Stainless steel bow rail with navigation lights
- Stainless steel stanchions with double lifelines
- Lifeline gates
- Stainless steel stern rail with brackets for lifebuoy and flagstaff
- KATO Marine Stainless-Steel Stern Dinghy Davit System
- Lowering helm seat for access to transom (Patented)
- 4 S/S handrails on coachroof
- 1 sail locker in cockpit on port side
- 1 locker for 2 gas bottles on port side
- 2 cockpit aft lockers
- Slatted teak cockpit seats
- Cockpit drop-leaf table
- Leather-covered stainless-steel steering wheel on pedestal with instrument console, stainless steel handrail, throttle lever, compass and cup holders
- Engine panel on cockpit coaming with plexi shield
- 1 winch handle holder
- Transom with slatted teak swim platform
- Stainless steel swim ladder
- Hot & cold cockpit shower

- Protective rubber strake on transom
- Manual bilge pump
- Genoa sheet tracks on side decks with adjustable cars
- Genoa sheet lead blocks with built-in stoppers
- 2 Lewmar 48 CSTC primary winches
- Mainsail traveler on coachroof adjustable from cockpit.
- 1 Lewmar 30 CSTO winch for control lines, on coach roof
- #30 CST Port Cabin top Winch
- 5 Spinlock XT jammers for halyards, reefing lines, vang and main sheet
- 1 Dorade vent with adjustable ventilator
- Stern light

CONSTRUCTION

- Hull: solid GRP laminate, structural inner grid with incorporated FRP floors, reinforced with unidirectional roving.
- Deck: balsa sandwich for rigidity and sound and heat insulation. Full deck liner for insulation and easy maintenance. Structural bulkheads bonded 360 degrees to hull and deck liners for maximum strength.
- Interior finish: cherry stained wood.

FORWARD CABIN

- Pullman style berth to port
- Storage shelves along length of hull
- 2 storage drawers under berth
- 1 hanging locker with shelves on starboard side
- 1 settee with shelf locker

SALON

- Dura Touch Salon Upholstery
- U-shaped settee with dinette
- Storage under settee
- Small central seat with storage

- Dinette table with aluminum legs
- Table convertible into double berth
- 2 shelf lockers with sliding doors (slotted for ventilation)
- Large storage cabinet and drawers forward.
- Cruise Air AC/Heat unit

GALLEY TO PORT

- Laminated work surface over icebox and around sink
- Stainless steel guard-rail
- 160 (5.6 cubic feet) litre GRP icebox with 12 v electric fridge & freezer
- 2019 New air-cooled condensing unit and evaporator
- 2019 MK3 Digital Temperature Control
- Cutlery drawer
- Cabinets with slotted doors for ventilation purposes
- Stowage under oven with hinged door
- 2 rectangular stainless steel sinks
- Pressurized hot and cold water mixer tap
- Trash can
- 2 burner LPG stove/oven
- Microwave

HEADS (2)

- Fully moulded head
- Manual marine toilet
- Washbasin with pressurized hot and cold water
- Shower drain pump
- Cabinet, mirror, bathroom accessories
- Laminated wood handrail
- Holding tank - 24 gal.

NAV STATION

- 2020 Standard Horizon GX2200 Matrix AIS with Built in GPS and DCS

- Navman Tracker 5600 Color Chart Plotter
- 2019 Fusion MS-RA70N Bluetooth Stereo
- 2019 JL Audio MX650 Speakers
- Chart table with storage and molded fiddle rail
- Storage under table
- Navigation instrument panel
- Electric panel - 12 V 20 functions
- Battery charge indicator, 12 V socket
- + 110 V Panel
- Nav seat with locker
- Halogen light

AFT CABIN

- Double berth
- Hanging locker
- Shelf locker
- Cruise Air AC/Heat

ELECTRONICS

- Raymarine Smart Pilot ST6002+ Autopilot with T1 Linear drive
 - Raymarine C-80 Multi-function Color Navigation display with Raystar 125 GPS
 - Raymarine 4KW Radar, mast mount on transom
Knotmeter, Depthsonder, Log
 - Raytheon ST60 Wind Speed and Direction
 - 2020 Standard Horizons CMP31 RAM3 Remote Mic
- Raytheon ST60 Tridata -

ELECTRICAL SYSTEM

- Electric water system with expansion tank
- 110 V system with 20 Amp battery charger
- 8 x 110 V outlets in cabins and saloon
- Grounded rigging

- 2020 LED Multi Color ceiling lights in saloon, galley and cabins
- Fluorescent ceiling light in galley
- Reading lights in cabins
- Approved navigation lights
- 20 x 12V outlet
- 2019 Philippi BCM 1A 2 Battery Monitor with Low Voltage Alarms
- Balmar 60-100-SR-IG alternator and ARS-5 regulator
- One (1) 4D house battery
- One (1) starter battery
- (2) Shore Power Cords

PLUMBING SYSTEM

- Engine and electric water heater
- Electric shower drain pumps
- Manual bilge pump in cockpit
- Electric bilge pump with float switch
- 2 rotomolded water tanks - 131 gal. total capacity
- Hot & Cold Cockpit Shower

WINDOWS/OPENINGS/VENTILATION

- 7 opening hatches
- 8 opening portholes
- 1 sliding companionway weather board and 2 part plexi weather boards
- 1 Lewmar opening porthole: aft head
- 2 Lewmar angled opening porthole: salon
- 1 large panoramic Perspex porthole with ABS blinds
- 1 Lewmar low profile opening hatch above forward head
- 2 Lewmar low profile opening hatches above saloon
- 1 Lewmar low profile opening hatch: forward cabin
- 1 Lewmar low profile opening hatch: forward cabin
- Fixed hull portholes in aft cabins, saloon and forward cabin
- Hatch Screens

MISCELLANEOUS EQUIPMENT

- Owner's handbook
- 3 winch handles
- Flag staff
- Custom Dodger, Bimini & Connector in forest green
- Custom Winter Cover & frame
- Magna Propane Grill
- Cockpit Cushions
- Dinghy Davits
- Jackstands
- VC17 Antifouling
- Safety Package
- LifeSling retrieval system
- 70' Rescue throw rope
- (4) Fire Extinguishers
- Smoke Detector
- CO Detector
- Delta Anchor with chain & Rode
- Anchor windlass Simpson Lawrence
- Docking, Lines, boat Pole, fenders

The Company offers the details of this vessel in good faith but cannot guarantee or warrant the accuracy of this information nor warrant the condition of the vessel. A buyer should instruct his agents, or his surveyors, to investigate such details as the buyer desires validated. This vessel is offered subject to prior sale, price change, or withdrawal without notice.

Исключения

При продаже яхты исключаются личные вещи владельца.

Отказ от ответственности

Компания предоставляет описание судна или яхты добросовестно, но не может гарантировать точность этой информации, а также не ручается за техническое состояние. Покупатель должен проинструктировать своих агентов или оценщиков исследовать представленную информацию более подробно, по собственному желанию. Продажа судна или яхты, изменение цены или снятие с продажи будет происходить без предварительного уведомления.

ФОТОГРАФИИ

photo 02



photo 03



photo 04



photo 05



photo 06



photo 07



photo 08



photo 09



photo 10



photo 11



photo 12



photo 13



photo 14



photo 15



photo 16



photo 17



photo 18



photo 19

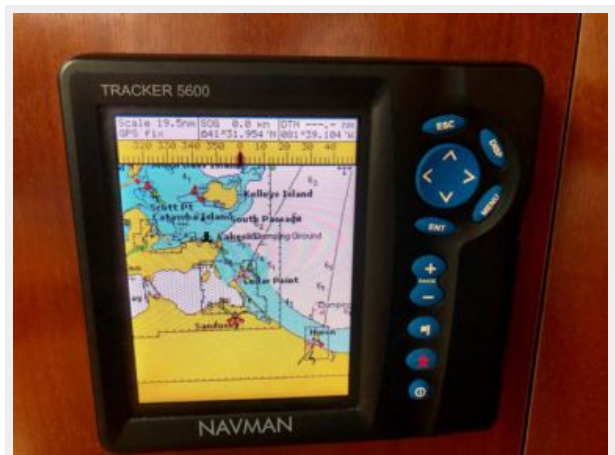


photo 20



photo 21



photo 22



photo 23



photo 24



photo 25



photo 26



photo 27



photo 28



photo 29

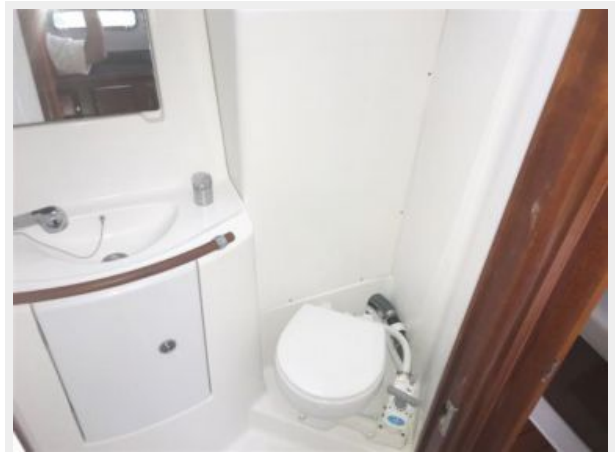


photo 30



photo 31



photo 32



photo 33



photo 34



photo 35



photo 36



photo 37



photo 38



photo 39



photo 40



photo 41



photo 42



photo 43



photo 44



photo 45



КОНТАКТЫ

Андрей Шестаков (Andrey Shestakov) – ведущий яхтенный брокер отдела продаж яхт и судов компании Shestakov Yacht Sales Inc. Официальный представитель Shestakov Yacht Sales Inc. для русскоговорящих клиентов в центральном офисе компании в Майами/Форт Лодердейл/Флорида/США.

Контактная информация

Email: andrey@shestakovyachtsales.com

Web: shestakovyachtsales.com

Телефоны

Краснодарский край: **+7(918)465-66-44**

США, Майами, Флорида: **+1(954)274-4435**

Время работы

Понедельник – Суббота: **9:00 - 21:00**
EDT

Воскресенье: **Закрето**

Адрес



Harbour Towne Marina, 850 NE 3rd St,
STE 213, Dania, FL 33004