

AQUA CHAMELEON — PRINCESS YACHTS



Builder: PRINCESS YACHTS

Year Built: 2013

Model: Cruising Yacht

Price: PRICE ON APPLICATION

Location: France

LOA: 83' 8" (25.48m)

Beam: 18' 9" (5.69m)

Max Draft: 10' 9" (3.26m)

Cruise Speed: 15 Kts. (17 MPH)

Max Speed: 33 Kts. (38 MPH)

Our experienced yacht broker, Andrey Shestakov, will help you choose and buy a yacht that best suits your needs **AQUA CHAMELEON — PRINCESS YACHTS** from our catalogue. Presently, at Shestakov Yacht Sales Inc., we have a wide variety of yachts available on our sale's list. We also work in close contact with all the big yacht manufacturers from all over the world.

If you would like to buy a yacht **AQUA CHAMELEON — PRINCESS YACHTS** or would like help answering any questions concerning purchasing, selling or chartering a yacht, please call **+1(954)274-4435**

TABLE OF CONTENTS

TABLE OF CONTENTS	2
SPECIFICATIONS	4
Overview	4
Basic Information	4
Dimensions	4
Speed, Capacities and Weight	5
Accommodations	5
Hull and Deck Information	5
Engine Information	5
DETAILED INFORMATION	6
Main Characteristics	6
Dimensions	6
Performance	6
Engines	6
Steering and Propulsion	7
Capacities	7
Electrical system	7
Air conditioning	7
Navigation equipment	7
Deck Equipment	8
Flybridge equipment	9
Accommodation	9
Main salon	9
Master Stateroom	10
Double Stateroom	10
Twin Stateroom	10
Crew Quarters	11
Galley Equipment	11

Tender and Toys	11
Exclusions	12
Disclaimer	12
PHOTOS	13
Princess-Yachts-82-layout	23
CONTACTS	24
Contact details	24
Telephones	24
Office hours	24
Address	24

SPECIFICATIONS

Overview

M/Y AQUA CHAMELEON

Princess Y82 – 2013

AQUA CHAMELEON is a 25.48m / 83'7" Princess Y82 Motor yacht motor yacht built in 2013 by Princess Yachts International.

AQUA CHAMELEON has a GRP hull and superstructure a beam of 5.69m, a draft of 3.26m.

Delivered in late 2013, this Princess Y82 is in true pristine condition. She has been maintained to the highest standard by her current owner with no expense spared.

She offers spacious accommodation for up to 8 guests in 4 top of the range suites comprising 1 Master Stateroom, 2 Double Staterooms, 1 Twin Stateroom. She carries up to 2 crew.

AQUA CHAMELEON is the only Princess Y82 to include a SAUNA.

AQUA CHAMELEON is capable of 33 knots flat out, with a cruising speed of 15 knots from her 5,364-liter fuel tanks.

Key features

- Full Air conditioning with reverse cycle heating
- Fully equipped Sauna
- Jacuzzi on the flybridge

Basic Information

Category: Cruising Yacht

Model Year: 82

Year Built: 2013

Country: France

Vessel Top: Bimini Top

Fly Bridge: Yes

Dimensions

LOA: 83' 8" (25.48m)

Beam: 18' 9" (5.69m)

Max Draft: 10' 9" (3.26m)

Speed, Capacities and Weight

Cruise Speed: 15 Kts. (17 MPH)

Max Speed: 33 Kts. (38 MPH)

Water Capacity: 305.11872006 Gallons

Fuel Capacity: 1417.018886928 Gallons

Fuel Consumption: 51.777722192 Gallons

Accommodations

Total Cabins: 4

Sleeps: 8

Crew Sleeps: 2

Hull and Deck Information

Hull Material: GRP

Deck Material: Teak

Hull Color: White

Engine Information

Engines: 2

Manufacturer: Caterpillar

Model: C32 Acert

Engine Type: Inboard

Fuel Type: Diesel

DETAILED INFORMATION

Main Characteristics

TYPE: Motor Yacht

BUILDER: Princess Yachts International

EXTERIOR / INTERIOR DESIGNER: Princess Yachts

YEAR: 2013

CONSTRUCTION: GRP

DECK MATERIAL: Teak

CREW: 2

FLAG: Malta

Dimensions

LOA: 25.48m / 83'7"

BEAM OVERALL: 5.69m / 18'6"

DRAFT: 3.26m / 10'6"

DISPLACEMENT: SEMI

Performance

MAXIMUM SPEED: 33 knots

CRUISING SPEED: 15 knots

FUEL CONSUMPTION: 196 liters / hour @ cruising speed

Engines

TYPE: Twin Caterpillar C32 Acert 1622hp

ENGINE HOURS: Port: 1284h Starbord: 1286h (21 Sept 2020)

Steering and Propulsion

THRUSTER: Hydraulic stern thruster (variable speed 300KgF)

STABILISER: TRAC Star 7.5 x fin stabiliser system

POWER ASSISTED STEERING

Capacities

TOTAL FUEL CAPACITY: 5,364 liters

TOTAL WATER CAPACITY: 1,155 liters

FRESH WATER MAKER: 350 liters / hour, complete with remote in the galley

Electrical system

TYPE: 24v DC/240v AC electrical system

GENERATOR 1: Cummins Onan diesel 220v/240v 27KW

GENERATOR 2: Cummins Onan diesel 220v/240v 13.5KW

GENERATOR HOURS: Generator 1: 3558h (21 Sept 2020)

Generator 2: 1269h (21 Sept 2020)

SHORE POWER: 240v shore power with 2 x 80 amp float battery charger

ELECTRO - HYDRAULIC SYSTEM TO RAISE/LOWER TRANSOM PLATFORM

Air conditioning

Full air conditioning with reverse cycle heating

Navigation equipment

Flybridge and Pilothouse

Caterpillar main engine control with slow vessel mode, troll and sync

Remote control electric anchor winch

Electro-hydraulic trim tabs with indicators

Autopilot

VHF with DSC R/T with intercom

Raymarine colour hybrid touch GPS/chart plotter with radar

Raymarine AIS Class B transponder interfaced with chartplotter

European version plotter charts

Raymarine aerial speed and distance log

Raymarine anemometer

Raymarine e125 multifunction brilliant colour display in crew cabin

Echo sounder with alarm

Remote control searchlight

Wind direction/speed

Compass

Trac stabilizer control

Bow/stern thruster control

Caterpillar main engine back up panel

Deck Equipment

Aft deck U-shaped seating with teak table

Teak laid transom on platform, cockpit deck, flybridge stairway, step to side decks, side decks, foredeck walkthrough and flybridge

Electric stern rope mooring system

Foredeck sunbed cushions

Underwater transom lights

Remote control telescopic passerelle

Flybridge equipment

Owner fitted bespoke storage cabinet in American walnut finish to house printer

Control and monitoring system panel

Jacuzzi

Sunbed

Bar with sink, barbecue, top loading coolbox, waste bin and storage

U-shaped seating with large teak table

L-shaped seating on either side of helm

Helm chair

Hard top fitted over flybridge

Electrical sliding Bimini top with overhead LED lighting open to Galley

Owner fitted black out shade between bridge/galley

Helmsman door to starboard side deck

Electrically operated sliding window to port side

Lower helm seat Cocoa Brown leather

Electrical up/down, fwd/aft bulkhead behind helm position

Accommodation

GUEST CABINS: 4

GUESTS SLEEPING: 8

CREW CABINS: 1

CREW: 2

Main salon

Interior floor covers in main salon, pantry, stairs leading to guest passageway and guest passageway

Dining table seating 8

U-shaped comfortable seating with round coffee table

Single 3-seater sofa with 2 x side tables with lamps

40" Samsung television Harmon/Kardon Home theater system with Bluetooth connectivity

Stainless steel framed main saloon doors

Cocktail counter with wine refrigerator

Master Stateroom

Full beam master stateroom

King sized bed

Large hull windows x 2

Table with x 2 chairs starboard side next to large window

Portside vanity with table lamp

Safes x 2

32" Samsung television with Harmon/Kardon Home theater system with Bluetooth connectivity

En-suite bath and shower with double sinks and bidet

Double Stateroom

Queen sized double bed

Wardrobe

En-suite with shower toilet and sink

Twin Stateroom

Single beds x 2

Wardrobe

En suite with shower, toilet and sink

Crew Quarters

Crew cabin port side with 2 x single beds with wardrobe and additional storage

Refrigerator

Doors leading to transom and to starboard side deck

Door to engine room

Washing machine and dryer

Safe

Head with toilet, shower and sink

Raymarine e125 multifunction brilliant colour display

Galley Equipment

Blackout shade between bridge and galley

Miele Combination microwave/conventional oven/grill

Miele convection hob

Full height fridge/freezer

Ice maker

Miele slim line dishwasher

Opening door from galley to port sidedeck

Harlequin dinner china (6 pieces)

Harlequin crystal square cut glasses

David Mellor cutlery (7 pieces)

Tender and Toys

TENDER: Williams Performance Jet Tender 5,5m

SAUNA: Fully equipped on lower deck starboard side.

JACUZZI: Fully equipped on the flybridge

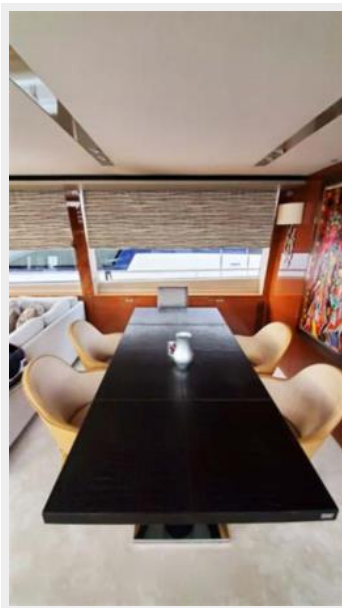
Exclusions

Owner's personal belongings.

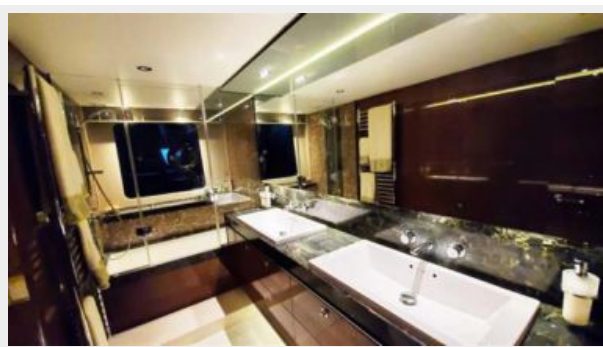
Disclaimer

The Company offers the details of this vessel or yacht in good faith but cannot guarantee or warrant the accuracy of this information nor warrant the condition of the vessel. A buyer should instruct his representatives, agents, or his surveyors, to investigate such details as the buyer desires validated. This vessel or yacht is offered subject to prior sale, price change, or withdrawal without notice.

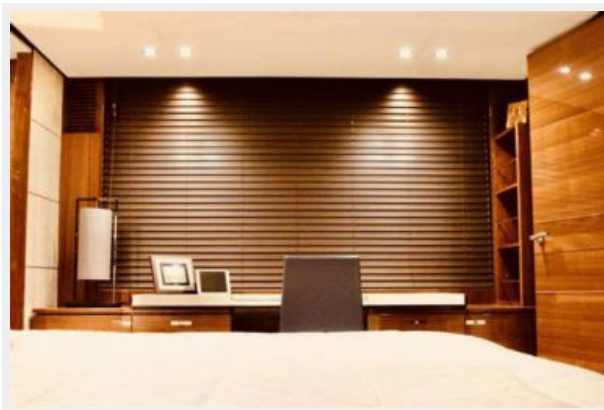
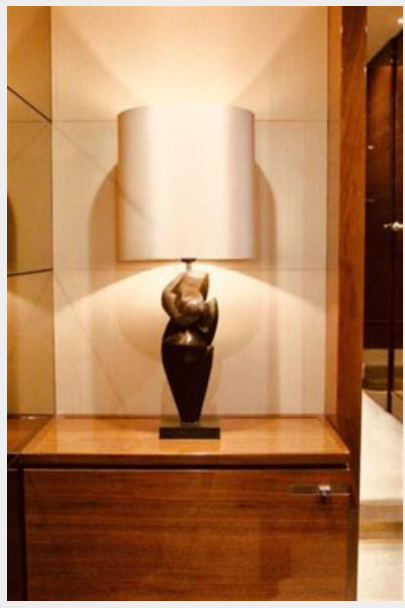
PHOTOS

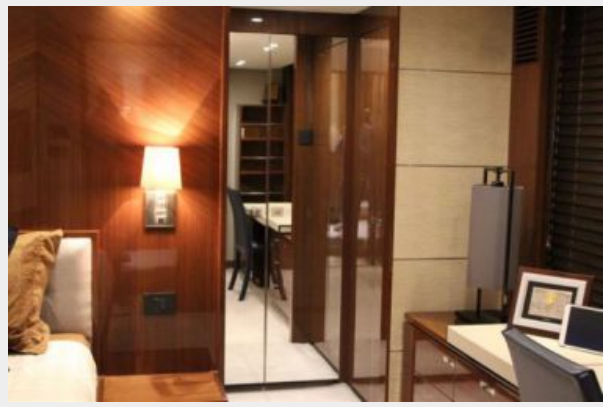
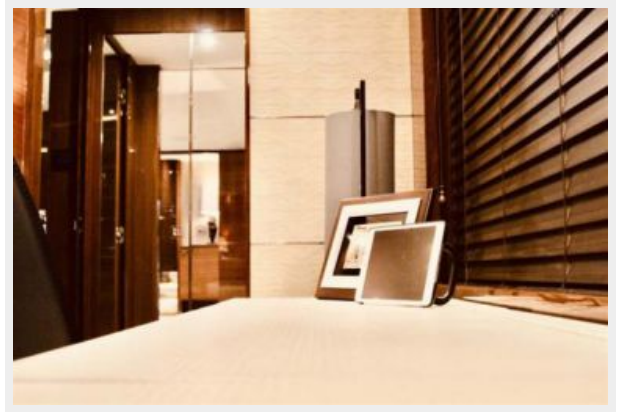






















Princess-Yachts-82-layout



CONTACTS

Andrey Shestakov, leading yacht broker of the sales department of Shestakov Yacht Sales Inc. Shestakov Yacht Sales Inc., the official representative of the Miami/Fort Lauderdale FL headquarters.

Contact details

Email: andrey@shestakovyachtsales.com

Web: shestakovyachtsales.com/en/

Telephones

USA: +1(954)274-4435

Office hours

Monday – Saturday: **9:00 - 21:00** EDT

Sunday: **closed**

Address



Harbour Towne Marina, 850 NE 3rd St,
STE 213, Dania, FL 33004