

## APACHE — CHANTIERS NAVAL



**Builder:** CHANTIERS NAVAL

**Year Built:** 1994

**Model:** Performance Sailboat

**Price:** PRICE ON APPLICATION

**Location:** United States

**LOA:** 105' 0" (32.00m)

**Beam:** 22' 0" (6.71m)

**Min Draft:** 12' 5" (3.78m)

**Cruise Speed:** 12 Kts. (14 MPH)

Our experienced yacht broker, Andrey Shestakov, will help you choose and buy a yacht that best suits your needs **Apache — CHANTIERS NAVAL** from our catalogue. Presently, at Shestakov Yacht Sales Inc., we have a wide variety of yachts available on our sale's list. We also work in close contact with all the big yacht manufacturers from all over the world.

If you would like to buy a yacht **Apache — CHANTIERS NAVAL** or would like help answering any questions concerning purchasing, selling or chartering a yacht, please call **+1(954)274-4435**

# TABLE OF CONTENTS

TABLE OF CONTENTS	2
SPECIFICATIONS	5
Overview	5
Basic Information	5
Dimensions	6
Speed, Capacities and Weight	6
Accommodations	6
Hull and Deck Information	6
Engine Information	6
DETAILED INFORMATION	7
Overview	7
Exclusions	8
Disclaimer	9
PHOTOS	10
3	10
2	10
4	10
5	10
6	10
7	10
9	11
8	11
10	11
11	11
13	11
12	11
14	12
15	12

---

16	12
17	12
18	12
19	12
20	13
21	13
22	13
23	13
24	13
25	13
26	14
27	14
28	14
29	14
30	14
31	14
32	15
33	15
34	15
35	15
36	15
37	15
38	16
39	16
40	16
41	16
42	16
43	16
44	17

---

---

45	17
46	17
47	17
48	17
49	17
50	18
51	18
52	18
53	18
54	18
55	18
56	19
CONTACTS	20
Contact details	20
Telephones	20
Office hours	20
Address	20

---

# SPECIFICATIONS

---

## Overview

---

**BANKRUPTCY SALE** Through the US Bankruptcy Court. All offers must be reviewed by creditors. A fast and beautiful yacht in so many respects, APACHE was custom designed as a ketch by Dominique Presles and Jacques Pierrejean, and has so very many exceptional features rarely seen in yachts of its type. She was built by N2A shipyard in France of Aluminum with a rigid structure able to make fast passages in heavy air and sea conditions. She is capable of 15 to 16 knots off the breeze, with 23 knot boat speeds in bigger air. Apache's long legs shine in many wind and sea conditions, leading to ecstatic sailing experiences for all. With these speeds, you may arrive at the best anchorages before many of the motor yachts and certainly before your sailing friends. As one well known sailmaker said of her, "we were sailing an 80 foot maxi class sailboat, and Apache passed us as though we were standing still". Her dimensions and hull shape create exceptional load carrying capacity, for long distance ocean cruising, in great comfort. She has four guest cabins, a navigators cabin aft, and additionally, she has two crew cabins forward of the salon and a workroom far forward. She is roomy and comfortable and with her refit still to be completed, will be ready for new adventures once refit work is complete. Aft of the salon, there are four staterooms, all with ensuite heads, each sleep two very comfortably. Additionally, a separate Navigators cabin, aft of the staterooms, also sleeps two, with additionally, two separate crew cabins forward of the salon. The interior is open and inviting, and whether living aboard for extended periods, or sailing long distances, she does all with practicality and style. To replicate Apache would cost far in excess of her current asking price. Thus, she represents an outstanding value and opportunity for individuals or family's seeking a large yacht with long legs, superb strength and enormous interior volume, superb charter potential and tremendous sleeping arrangements, if one is capable of managing a refit. **CURRENTLY:** Vessel is still in process of being refitted and needs deck nonskid paint, rudder shaft work, prop work, standing and running rigging completed, note that the mast and rigging is at a different yard, all deck hardware must be reinstalled, systems checked and repaired for operation. Her headliners must be repaired. Canvas must be replaced. Batteries need to be replaced. Spars need paint. Stove, dishwasher, washing machine and dryer replaced. Hydraulics repaired. Also her swim platform does not operate at the moment. Please CALL for current photos. The vessel is in bankruptcy and is being sold as is. All offers submitted must be approved by the Bankruptcy Court. There is NO financing possible.

---

## Basic Information

---

**Category:** Performance Sailboat

**Model Year:** 1994

**Year Built:** 1994

**Country:** United States

---

## Dimensions

---

**LOA:** 105' 0" (32.00m)

**Beam:** 22' 0" (6.71m)

**Min Draft:** 12' 5" (3.78m)

**MFG Length:** 105' 0" (32.00m)

---

## Speed, Capacities and Weight

---

**Cruise Speed:** 12 Kts. (14 MPH)

**Displacement:** 144000 Pounds

**Water Capacity:** 410 Gallons

**Fuel Capacity:** 770 Gallons

---

## Accommodations

---

**Total Cabins:** 4

**Total Heads:** 4

---

## Hull and Deck Information

---

**Hull Material:** Fiberglass

**Hull Finish:** Aluminum

---

## Engine Information

---

**Engines:** 1

**Manufacturer:** Volvo Penta

**Model:** D6

**Engine Type:** Inboard

**Fuel Type:** Diesel

# DETAILED INFORMATION

## Overview

LAYOUT, CONFIGURATION  
**CREW QUARTERS:** Starting from the bow and forward of the salon, all the way forwards is a large forepeak or foc's'l, with shelves for various necessary components.  
**CREW CABINS.** Next aft is are two crew cabins, one with a double berth and storage below, the other cabin has upper and lower berths. The head forward has integral shower.  
**GALLEY:** Next aft is the large galley. To starboard are four large refrigerators, controllable via thermostats to create freezer if necessary. Aft most in the crew quarters is a bulkhead with a reportedly water tight door, at the moment not operational  
**SALON:** Large Salon with dining table and large couch to starboard, Large couch to port. The geometric space in the salon is impressive. The finish of the cabin sole is hi gloss varnish.  
**AFT of SALON:** Four Guest Cabins each with ensuite head. Note photos coming. Central hallway with access to systems below.  
**AFT of the FOUR GUEST CABINS:** Navigation cabin with large nav desk and sleeping berths for two. Access to aft cockpit.  
 Enormous Customized interior ideal for live-aboard or charter.  
**GALLEY**

Sink with spigot, Force 10 Four burner Stove and oven - Propane, Ice Maker, Microwave Oven, Massive Refrigerator and Freezer system.  
**DECK**

Aluminum deck painted after removal of teak planking. Harken deck blocks. Boom vang for both main and mizzen  
**WINCHES:** 24 VDC Hydraulic power pack for winches, making exceptionally easy the task of hoisting any particular item, whether it be sails or otherwise.  
 Two Harken 14-3 2 speed Hydraulic, power, and manual  
 Two Harken 980-3 Hydraulic and manual 2 speed  
 Two Harken 1120-3 Three speed  
 Four Harken 66-2 Two speed  
 Four Harken 56-2 Two speed

### LIFELINES:

Triple Stainless Steel lifelines with Stainless steel stanchions and gates. Stainless steel Bow pulpit and stern pulpit, double rails.

### HULL

Welded aluminum hull  
**ELECTRICAL** 115/125/208/220 V AC shore power and power provided by onboard generators consisting of two Northern Lights P944 Generators with 27 kW each. Both were new in 2008.  
 24VDC and 12 VDC ships systems. Main electrical panel in engine room replaced in 2009.  
**BATTERIES** Main Battery Banks are in Salon and are needing replacement  
 Engine Batteries two 8-D batteries for main auxiliary engine.  
 Generator

Batteries Some House bank Batteries have been replaced with new, but additional batteries are needed. ELECTRONICS

Full complement of electronics appropriate for the size of the vessel. Some of the items have not been tested and therefore it is not certain as to their operation. In Navigation Station belowdecks:

Furuno FS1550 Single Sideband Radio Furuno GP-32 GPS with WASS Raymarine 120 Radar and Plotter - questionable as to operation Raymarine ST60 instrumentation, speed, depth, wind, etc. Simrad Autopilot Sailor 501 Watchkeeper ICOM M504 VHF radiotelephones At Helm: Raymarine E80 Radar and Plotter Simrad Autopilot Remote Raymarine Autopilot-Smartpilot X-SOL, new in 2012 Raymarine ST 70 Sailing instruments ICOM M504 AIR CONDITIONING Aqua Air system, Chilled water loop style air conditioning. 65000 BTU - 5 Tons. Installed new in 2009. Entire yacht is air conditioned including Crews quarters. 380 Volt system at 50 HZ. MECHANICAL Main engine: Volvo Penta D6 330 hp., Electronic. New in June 2008. 187 hours. Installed 2008 - Engine driven crash pump, Aquadrive all installed at about the same time. New mounts 2008, new Racor system 2008, new fuel lines 2008. Flooring in engine room installed new in 2008, diamond plate, aluminum Generators: TWO 2008 Northern lights generators, 27 kW per generator. P944 model, new exhaust, new panels, ALL new 2008. New Fuel lines 2009. Fire suppression: CO2 system certified 2014 Heads: All head discharge leads to Black water tank. Discharge system. EVAC vacuum toilet system. Steering: Manual with hydraulic assist. Water system: Groco 24VDC Fresh water pump installed 2009. Torrid Hot water tanks. 1 X 20 gallons, 1 X 30 gallons. These tanks receive heat both from heat exchanger and from the Bilge Pumps: Gianneschi-Ramacciotti 24 VDC pump Single Fire station. CRASH PUMP BUILT INTO YACHT: Crash pump on engine - 60 Gallons per minute with engine running. BILGE PUMPS: Three RULE 3700 12 VDC Bilge Pumps: Some in forepeak, galley, engine room, two main corridor, one in Main aft Bilge Fire Pump system. SAILS AND RIGGINGSAILS: All by Quantum, 2007: Mainsail, Staysail, Genoa, Mizzen. All are heavily used and need replacement FURLING: Both Staysail and headsail furling by Harken, needing replacement SPARS: Marechal Main and Mizzen Masts, aluminum. Both need new standing and running rigging. Marechal Booms, both aluminum. ENTERTAINMENT Sharp 32 inch Hi Def HD LCD Television in main salon Advent 27 inch Hi Definition LCD Television Magnavox 15 inch LCD Television in crew quarters WATER MAKERS RO Watermaker, Reverse Osmosis system, Seafari. The membrane needs replacing. GROUND TACKLE Maxwell Anchor Windlass 150 pound plow anchor with 300 feet of 1/2 inch High Tensile Strength Chain UPGRADE LIST Substantial list of extra upgrades. Please contact broker for details. SAFETY GEAR ACR 406 hz EPIRB 406 HZ EPIRB new in 2010 Zodiac SIXTEEN Person liferaft in canister SOLAS MOMPFD's 12 Adult SOLAS class, 4 Children SOLAS Full Flare kits including red hand flares and numerous others Orange Smoke Canisters Para red rocket MK III Two Channel VHF GMDSS survival radio

## Exclusions

Owner's personal belongings.



---

## Disclaimer

---

The Company offers the details of this vessel or yacht in good faith but cannot guarantee or warrant the accuracy of this information nor warrant the condition of the vessel. A buyer should instruct his representatives, agents, or his surveyors, to investigate such details as the buyer desires validated. This vessel or yacht is offered subject to prior sale, price change, or withdrawal without notice.

# PHOTOS

2



3



4



5



6



7



8



9



10



11



12



13





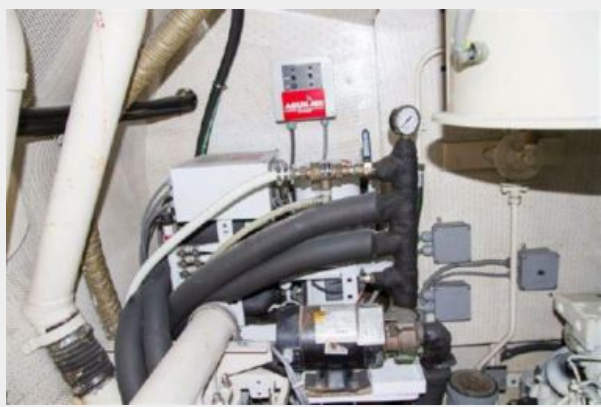
14



15



16



17



18



19



20



21



22



23



24



25





26



27



28



29



30



31



32



33



34



35



36



37





38



39



40



41



42



43





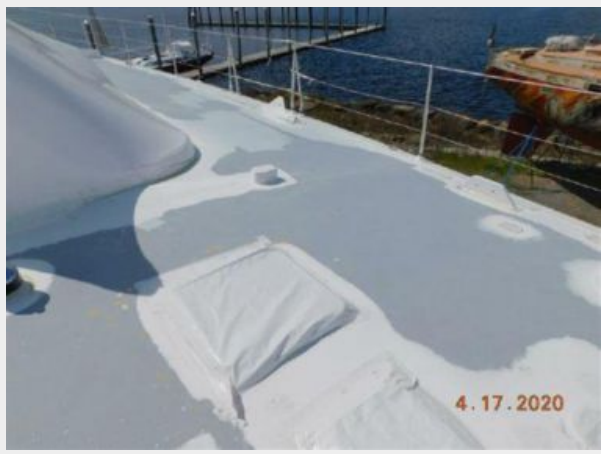
44



45



46



47



48



49



50



51



52



53



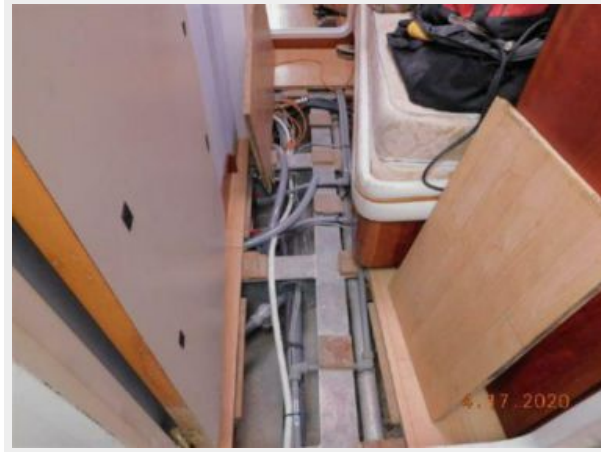
54



55



56



# CONTACTS

---

Andrey Shestakov, leading yacht broker of the sales department of Shestakov Yacht Sales Inc. Shestakov Yacht Sales Inc., the official representative of the Miami/Fort Lauderdale FL headquarters.

## Contact details

---

Email: [andrey@shestakovyachtsales.com](mailto:andrey@shestakovyachtsales.com)

Web: [shestakovyachtsales.com/en/](http://shestakovyachtsales.com/en/)

## Telephones

---

USA: +1(954)274-4435

## Office hours

---

Monday – Saturday: **9:00 - 21:00** EDT

Sunday: **closed**

## Address

---



Harbour Towne Marina, 850 NE 3rd St,  
STE 213, Dania, FL 33004