

GENERAL GAMBLE — BENETEAU



Судостроитель: BENETEAU

Год постройки: 1994

Модель: Крейсерская яхта

Цена: **ЦЕНА ЯХТЫ ПО ЗАПРОСУ**

Местонахождение: United States

Длина общая: 44' 0" (13.41m)

Ширина: 12' 9" (3.89m)

Мин. осадка: 5' 6" (1.68m)

Купить **General Gamble — BENETEAU** а также выбрать подходящую вам яхту из нашего каталога яхт вам поможет опытный яхтенный брокер Андрей Шестаков. На сегодняшний день компания **Shestakov Yacht Sales Inc.** имеет большое количество яхт в собственном списке продаж, а также тесно сотрудничает со всеми крупными яхтенными производителями по всему миру.

Для того чтобы купить яхту **General Gamble — BENETEAU** а также проконсультироваться по любому вопросу связанному с покупкой, продажей, чартером яхт позвоните по телефону **+7(918)465-66-44**.

ОГЛАВЛЕНИЕ

ОГЛАВЛЕНИЕ	2
ХАРАКТЕРИСТИКИ	5
Обзор	5
Основная информация	6
Размеры	6
Скорость, вместимость и масса	6
Размещение	6
Корпус и палуба	6
Информация о двигателе	6
ПОДРОБНОЕ ОПИСАНИЕ	7
Accommodations	7
Galley	7
Electrical	7
Electronics	8
Sails and Rigging	8
Deck and Cockpit	9
Additional and Safety Equipment	9
Исключения	9
Отказ от ответственности	9
ФОТОГРАФИИ	10
Spinnaker up	10
General Gamble	10
Transom and aft deck	10
Stern view showing davits	10
Aft deck from dock	10
Cockpit	10
Wheel and instruments, dodger	11
Traveler and cockpit	11

Instruments at helm	11
Aft deck from cockpit	11
Port lazarette	11
Starboard aft lazarette	11
Propane locker and storage, starboard aft	12
Pole for antennae, davits, outboard motor hoist and mount	12
Foredeck showing spinnaker poles	12
Mast base and dorade	12
Side deck and windows	13
Anchor locker and windlass	13
Electric windlass	13
Deck from bow	13
Cockpit table and Edson instrument pod on pedestal	14
Mast base and dorades	14
Dinette	14
Salon	14
Comfy chairs with storage below	14
Chairs and nav station	14
Nav station	15
Instruments at nav station	15
Instruments at nav station	15
Dining table	15
Generator	15
Table folded up and engine compartment open	15
Galley-outboard	16
Galley	16
Galley storage inboard	16
Aft cabin bunk	16
Port storage, aft cabin	17

Starboard storage, aft cabin	17
Aft head with separate shower/tub	17
Basin and head	17
Galley from aft cabin to salon	18
Vanity and access to head, aft cabin	18
Access to forepeak from salon	18
Upper bunk	18
Forward head	19
V-berth	19
V-berth storage	19
Engine	19
Engine aft	20
Trojan batteries	20
Battery charger	20
Engine room	20
EPIRB	21
Watermaker and generator battery	21
Bow	21
Coachroof	21
In the slip	22
Beautiful under spinnaker	22
КОНТАКТЫ	23
Контактная информация	23
Телефоны	23
Время работы	23
Адрес	23

ХАРАКТЕРИСТИКИ

Обзор

General Gamble is rare offering of a Beneteau 44 Center Cockpit. The boat has 3 cabins and 2 heads. The hull and rig were designed by Farr, so the sailing characteristics are top notch. General Gamble was built in France, the current owners sailed her across the Atlantic in the early 2000's and she has been on the East Coast of the US since that time.

The center cockpit is spacious and safe, wide, clear side decks allow easy access to the bow and the extensive aft deck has a lot of storage and enough space to serve a multitude of functions. The walk-through transom with easy steps up make the boat very accessible from a dinghy or from the dock.

The interior layout is functional and the unusual 'chairs' on the starboard side are a luxury on a cruising boat. The galley has extensive storage as well as separate fridge and freezer. The aft cabin is spacious and has a large, private head with separate shower. The forepeak has a bunk cabin and V-berth as well as a head.

The spacious engine room and can be accessed by lifting the companionway stairs or from the aft cabin.

Recent plans for an extended voyage were put on hold in March, so General Gamble has a LOT of brand new equipment including:

- **Ullman Inmast furling mainsail**
- **Ullman Genoa**
- **Ullman furling Jib**
- **Ullman Asymmetrical Spinnaker with sock**
- **KATO Davits**
- **KATO outboard motor lift**
- **Outboard engine mount on sternrail**
- **Raymarine Axiom 9 Pro-S Chartplotter on Nav Pod**
- **Raymarine AIS 700**
- **ICOM VHF w/ GPS**
- **LED masthead lights**

General Gamble also has:

- **Airconditioning**
- **Watermaker**
- **Generator**
- **Radar**
- **BBQ**
- **2 x 10lb Aluminum propane tanks**

Don't miss the opportunity to find yourself a Center Cockpit that sails superbly.

Основная информация

Тип судна: Крейсерская яхта

Подкатегория: Center Cockpit

Модельный год: 1994

Год постройки: 1994

Страна: United States

Размеры

Длина общая: 44' 0" (13.41m)

Длина по ватерлинии: 36' 8" (11.18m)

Ширина: 12' 9" (3.89m)

Мин. осадка: 5' 6" (1.68m)

Скорость, вместимость и масса

Водоизмещение: 26500 Pounds

Вместимость воды: 132 Gallons

Объем топливного бака: 80 Gallons

Размещение

Всего кают: 3

Корпус и палуба

Материал корпуса: Fiberglass

Информация о двигателе

Двигатели: 2

Производитель: Volvo

ПОДРОБНОЕ ОПИСАНИЕ

Accommodations

The companionway enters the salon which has a raised dinette, with curved seating around an oval table, to port and chairs to starboard. The aft chair doubles as a seat for the aft-facing nav station. There is plentiful storage below and behind all the seating.

The salon table hinges so that it can be in the vertical position as the companionway stairs raise on a hydraulic arm, to provide access to the generator and the engine room. Large windows in the coachroof give a good view from the settee to the exterior.

The galley is a walk-through galley on the starboard side, with refrigeration, stove and sinks on the hull side and storage on the mid-ships side. A wet-locker/hanging locker is located at the forward end of the walkthrough on the curve between the companionway and the galley storage.

The aft cabin is accessed from the galley, it has a queen-sized centerline bunk, storage lockers port and starboard, a mirror and vanity amidships and a large head to port. The head has a basin head & separate shower, with a small tub. Below the mirror in the cabin is a hatch that provides access to the back end of the engine as well as to batteries and filters.

Forward of the salon is a vestibule which provides access to a bunk cabin to port, the forward head to starboard and a v-berth in the bow. Both cabins have storage and a hatch in the V-berth provides good ventilation.

Galley

- Force 10 3-burner stove w/ oven
- Moulinex Microwave
- Double S/S sink w/ mixer tap
- Frigoboat Top loading fridge
- Frigoboat Top loading freezer
- Foot and hand pumps
- Storage on both sides of galley
- Pull-out garbage container

Electrical

- 220V/12 V with Transformer
- Fisher Panda Generator (221 Hours)
- HRO Watermaker
- 2 x CruiseAir Reverse Cycle Aircon units

- Mastervolt Battery charger
- 1 x 12V Generator start battery
- 1 x 12V Engine start battery (2017)
- 6 x Trojan 6V house batteries (2017)
- Lofrans electric windlass
- LED Masthead Tricolor and Anchor light ((10-19)
- Lectrasan toilets

Electronics

- Raymarine Axiom 9 Pro Chartplotter (10/19)
- Furuno Radar (10/19)
- ICOM 424G VHF w/ ram at helm (10/19)
- ICOM IC-M56 VHF
- Raymarine AIS 700 (10/19)
- Surecall SuperHalo Cellular Booster Kit (10/19)
- Actisense NMEA 2000 to USB for PC (10/19)
- Fusion Stereo w/ NMEA & Sirius

- Garmin Radar
- Autohelm ST7000 Autopilot
- Autohelm Wind
- Autohelm Log
- Autohelm Depth

Sails and Rigging

- Ullman Inmast furling Mainsail (2020)
- Ullman Furling Genoa (2020)
- Ullman Furling Jib (2020)
- Ullman Asymmetrical Cruising Spinnaker w/ sock (2020)
- Facnor Genoa furler
- Harken Jib furler
- Lewmar ST40 Electric winch on starboard coachroof
- Lewmar ST40 mainsheet winch on aft coaming
- Lewmar ST54 Primary winches on coamings
- Traveller aft of cockpit
- 2 x Spinnaker poles
- 3 x Spinlock Clutches XAS 6 -12mm (2020 - not installed)
- 3 x Spinlock Clutches XTS 6-10mm (2020 - not installed)

Deck and Cockpit

- Double bow roller
- CQR Anchor w/ chain
- Lofrans Electric windlass
- S/S handrails on coachroof
- Dodger
- Bimini (T-Top style)
- Connector
- Cockpit cushions
- Wheel and pedestal
- Edson pods on pedestal for electronics
- Aft deck has lazarettes on side decks and port & starboard quarters
- Outboard motor mount (2019)
- KATO outboard motor lift (2019)
- KATO davits (2019)
- Walkthrough transom
- Transom steps
- Swim Ladder
- Transom shower

Additional and Safety Equipment

- EPIRB
- Lifejackets
- Docklines and fenders
- Spare lines
- Spares... for 'everything'

Исключения

При продаже яхты исключаются личные вещи владельца.

Отказ от ответственности

Компания предоставляет описание судна или яхты добросовестно, но не может гарантировать точность этой информации, а также не ручается за техническое состояние. Покупатель должен проинструктировать своих агентов или оценщиков исследовать представленную информацию более подробно, по собственному желанию. Продажа судна или яхты, изменение цены или снятие с продажи будет происходить без предварительного уведомления.

ФОТОГРАФИИ

General Gamble



Spinnaker up



Transom and aft deck



Stern view showing davits



Aft deck from dock



Cockpit



Wheel and instruments, dodger

Traveler and cockpit



Instruments at helm



Aft deck from cockpit



Port lazarette



Starboard aft lazarette



Propane locker and storage, starboard aft



Pole for antennae, davits, outboard motor hoist and mount



Foredeck showing spinnaker poles



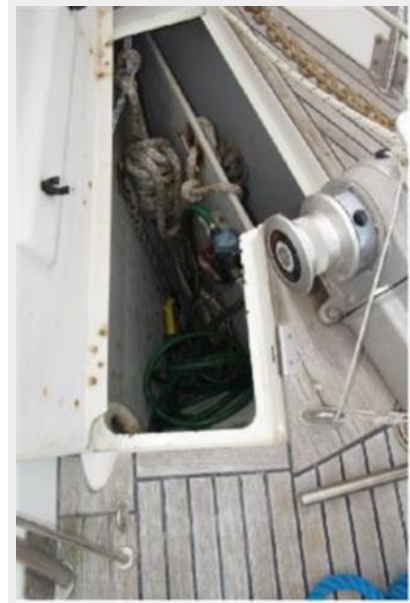
Mast base and dorade



Side deck and windows



Anchor locker and windlass



Electric windlass



Deck from bow



Cockpit table and Edson instrument pod on pedestal



Mast base and dorades



Salon



Dinette



Comfy chairs with storage below



Chairs and nav station



Nav station



Instruments at nav station



Instruments at nav station



Dining table



Table folded up and engine compartment open



Generator



Galley



Galley-outboard



Galley storage inboard



Aft cabin bunk



Port storage, aft cabin



Starboard storage, aft cabin



Aft head with separate shower/tub



Basin and head



Galley from aft cabin to salon

Vanity and access to head, aft cabin



Access to forepeak from salon



Upper bunk



Forward head



V-berth



V-berth storage



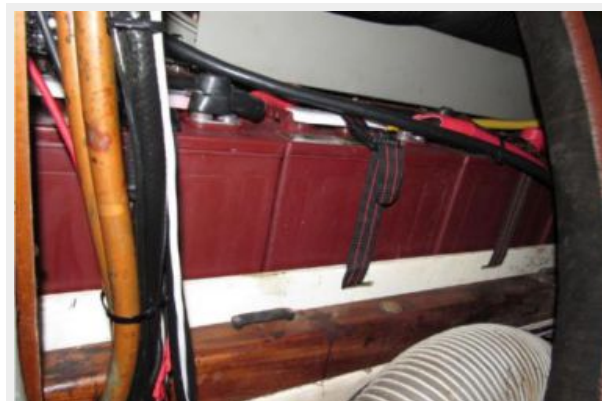
Engine



Engine aft



Trojan batteries



Battery charger



Engine room



EPIRB



Watermaker and generator battery



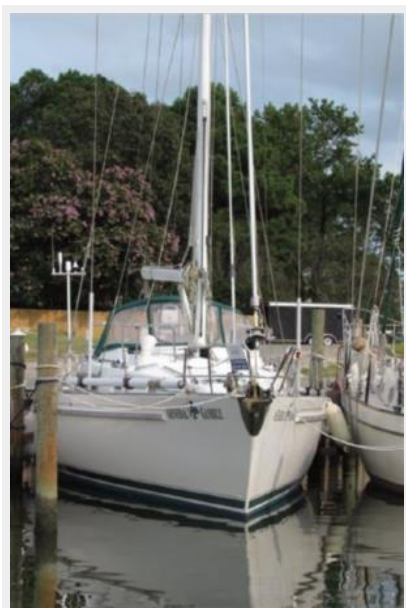
Bow



Coachroof



In the slip



Beautiful under spinnaker



КОНТАКТЫ

Андрей Шестаков (Andrey Shestakov) – ведущий яхтенный брокер отдела продаж яхт и судов компании Shestakov Yacht Sales Inc. Официальный представитель Shestakov Yacht Sales Inc. для русскоговорящих клиентов в центральном офисе компании в Майами/Форт Лодердейл/Флорида/США.

Контактная информация

Email: andrey@shestakovyachtsales.com

Web: shestakovyachtsales.com

Телефоны

Краснодарский край: **+7(918)465-66-44**

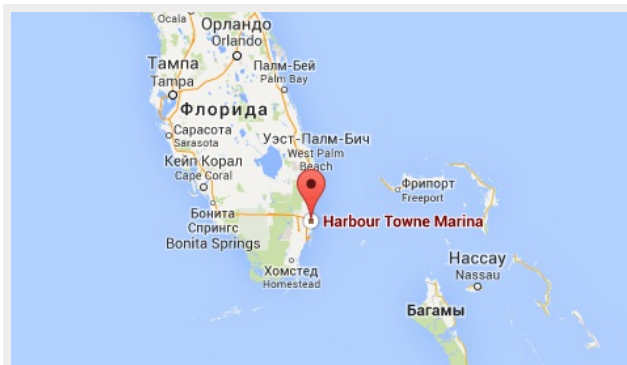
США, Майами, Флорида: **+1(954)274-4435**

Время работы

Понедельник – Суббота: **9:00 - 21:00**
EDT

Воскресенье: **Закрито**

Адрес



Harbour Towne Marina, 850 NE 3rd St,
STE 213, Dania, FL 33004