

GOOD TIMES — MERIDIAN



Builder: MERIDIAN

Year Built: 2004

Model: SHELBY

Price: PRICE ON APPLICATION

Location: United States

LOA: 45' 0" (13.72m)

Beam: 14' 4" (4.37m)

Max Draft: 3' 10" (1.17m)

Cruise Speed: 20 Kts. (23 MPH)

Our experienced yacht broker, Andrey Shestakov, will help you choose and buy a yacht that best suits your needs **Good Times — MERIDIAN** from our catalogue. Presently, at Shestakov Yacht Sales Inc., we have a wide variety of yachts available on our sale's list. We also work in close contact with all the big yacht manufacturers from all over the world.

If you would like to buy a yacht **Good Times — MERIDIAN** or would like help answering any questions concerning purchasing, selling or chartering a yacht, please call **+1(954)274-4435**

TABLE OF CONTENTS

TABLE OF CONTENTS	2
SPECIFICATIONS	5
Overview	5
Basic Information	5
Dimensions	5
Speed, Capacities and Weight	5
Accommodations	6
Hull and Deck Information	6
Engine Information	6
DETAILED INFORMATION	7
Accommodations	7
Galley	8
Decks and Exterior	8
Engines and Mechanical	9
Navigation and Electronics	10
Disclaimer	10
Exclusions	10
Disclaimer	10
PHOTOS	11
2	11
3	11
4	11
5	11
6	11
7	11
8	12
9	12
10	12

11	12
12	12
13	12
14	13
15	13
16	13
17	13
18	13
19	13
20	14
21	14
22	14
23	14
24	14
25	14
26	15
27	15
28	15
29	15
30	15
31	15
32	16
33	16
34	16
35	16
36	16
37	16
38	17
39	17

CONTACTS	18
Contact details	18
Telephones	18
Office hours	18
Address	18

SPECIFICATIONS

Overview

Good Times is a beautiful example of the very popular Meridian 459 Cockpit Motor Yacht. The 459 combines the room and functionality of an aft cabin motor yacht with the advantages of a spacious aft cockpit. Featuring two staterooms and two heads, a large salon, and a very functional galley, the 459 is perfect for a cruising couple or family, and also for those who like to entertain.

Good Times is exceptionally clean and well-maintained. Her gelcoat shines and her canvas package is quite good. Power is provided by low-hour twin Cummins 6BT diesels rated at 370 HP each.

This boat shows extremely well and deserves a look! Please give us a call today for more details and to schedule a time for you to see her for yourself!

Basic Information

Category: SHELBY

Sub Category: Motor Yacht

Model Year: 2004

Year Built: 2004

Country: United States

Dimensions

LOA: 45' 0" (13.72m)

Beam: 14' 4" (4.37m)

Max Draft: 3' 10" (1.17m)

Clearance: 14' 4" (4.37m)

Speed, Capacities and Weight

Cruise Speed: 20 Kts. (23 MPH)

Displacement: 30700 Pounds

Water Capacity: 90 Gallons

Holding Tank: 55 Gallons

Fuel Capacity: 330 Gallons

Accommodations

Total Cabins: 2

Total Heads: 2

Hull and Deck Information

Hull Material: Fiberglass

Engine Information

Engines: 2

Manufacturer: Cummins

Model: 6BTA 5.9

Engine Type: Inboard

Fuel Type: Diesel

DETAILED INFORMATION

Accommodations

The Forward Guest Cabin offers a centerline Island Queen berth, excellent storage, a solid privacy door and a private entrance to the Forward Head. The Forward Head also has a day entrance opposite the Galley and features a stall shower and a Vacu-Flush toilet system.

The aft Master cabin features an Island Queen berth also, positioned athwartships, as well as separate closets for head and shower with a vanity and sink between. Dominating the aft Master is a sliding glass door opening directly to the aft Cockpit.

Interior Professionally Cleaned Regularly

- Four-Zone Reverse Cycle Heat and Air Conditioning
- Beautiful Cherry Cabinetry Throughout
- All AC Units Professionally Serviced Twice Each Year

Salon

- Tiered Windows for Excellent Visibility
- Flexsteel Settee with Incliner and Magic Bed
- Crescent Dinette/Sofa
- Portable High/Low Dinette/Coffee Table
- Optional Wooden Stools Extend Dinette Seating
- Central Vacuum System
- Flatscreen TV
- Forward Head Entrance Door Opposite Galley
- All New Area Rugs

Forward Guest Stateroom

- Privacy Door
- Centerline Island Queen Berth w Storage Underneath
- Memory Foam Mattress Overlay - New 2017
- Two Hanging Lockers
- Private Forward Head Entrance
- Stall Shower
- Vacu-Flush Head System
- Flatscreen TV
- Forward AC Unit Replaced 2018

Aft Master Stateroom

- Island Queen Berth with Padded Headboard

- Memory Foam Mattress Overlay - New 2017
- Two Cedar-Lined Hanging Lockers
- Enclosed Shower Stall Closet
- Enclosed Head Closet
- Vacu-Flush Head System
- Vanity Cabinet with Molded Sink Basin
- Sliding Glass Doors Open to Cockpit

Galley

- Norcold 7 Cu. Ft. Dual Voltage Refrigerator/Freezer
- Three-Burner Electric Stovetop
- Convection Microwave Oven - New 2020
- Coffee Maker
- Stainless Steel Sink Basin with Cover
- Cherry Cabinetry
- Corner Cabinet with Carousel Storage
- Karadon Solid Surface Countertops
- Teak and Holly Flooring
- Under-Floor Storage
- Splendide Washer/Dryer Combo Unit Under Salon Stairs
- Central Vacuum System

Decks and Exterior

- Full Exterior Detail and Wax - 2020
- Fresh Bottom Paint - 2020

Cockpit

- Large Self-Bailing Aft Cockpit
- Sliding Door to Master Stateroom
- Lazerette Access to Storage Well and Generator
- Transom Storage
- Transom Door
- Molded Swim Platform
- Molded Staircase to Aft Deck
- Fender Storage

Aft Deck

- Aft Deck Fiberglass Hardtop
- Full Canvas Enclosure - New 2017 - Refurbished 2020

- Fiberglass Aft Door
- Curved Acrylic Salon Door with Screen
- Molded Steps to Bridge Deck
- Side Wing Doors to Walkarounds
- Wet Bar with Sink Basin and Fresh Water
- Icemaker - New 2017
- Molded Aft Bench Seating
- Fiberglass Storage Lockers
- Dual Pedestal Fiberglass Table
- Flatscreen Smart TV

Bridge Deck

- Centerline Helm
- Barrel Captain's Chair with Bolster
- L-Shaped Starboard Settee with Underseat Storage
- Forward Facing Companion Seat to Port
- Dual Voltage Bridge Refrigerator
- Venturi Windshield
- Full Canvas Bridge Enclosure - New 2017 - Refurbished 2020
- Bridge Stereo - New 2017

Foredeck

- Foredeck Sun Cushions
- Anchor Cradle
- Electric Windlass with Bow and Helm Controls
- Anchor Rode Locker with Access - Chain Replaced 2018

Engines and Mechanical

- Twin Cummins 6BTA Diesels - 370 HP Each - 1130 Hours
- Engines Serviced Summer 2020
- Walker Airseps
- Dripless Shaft Seals
- Onan 11.5 kW Generator in Sound Box - 530 Hours
- Meridian Docking-on-Command Bow and Stern Thrusters
- Single 50A 240VAC Shore Power Connection
- Glendenning Cable Master System
- Raw Water Engine Strainers
- Racor Fuel Water Separators
- Xantrex Dual Charge 40 Amp Battery Charger

- Bennett Trim Tabs

Navigation and Electronics

Equipped with the Meridian Premium Navigation Package

- RayMarine RL 80C Color Plotter
- RayMarine 4 kW Radome Radar Antenna
- Ray 53 VHF Radio
- ST40 Depth Sounder
- AutoHelm ST6001 AutoPilot
- Jabsco Remote Spotlight
- Bennett Trim Tabs

Disclaimer

The Company offers the details of this vessel in good faith but cannot guarantee or warrant the accuracy of this information nor warrant the condition of the vessel. A buyer should instruct his agents, or his surveyors, to investigate such details as the buyer desires validated. This vessel is offered subject to prior sale, price change, or withdrawal without notice.

Exclusions

Owner's personal belongings.

Disclaimer

The Company offers the details of this vessel or yacht in good faith but cannot guarantee or warrant the accuracy of this information nor warrant the condition of the vessel. A buyer should instruct his representatives, agents, or his surveyors, to investigate such details as the buyer desires validated. This vessel or yacht is offered subject to prior sale, price change, or withdrawal without notice.

PHOTOS

2



3



4



5



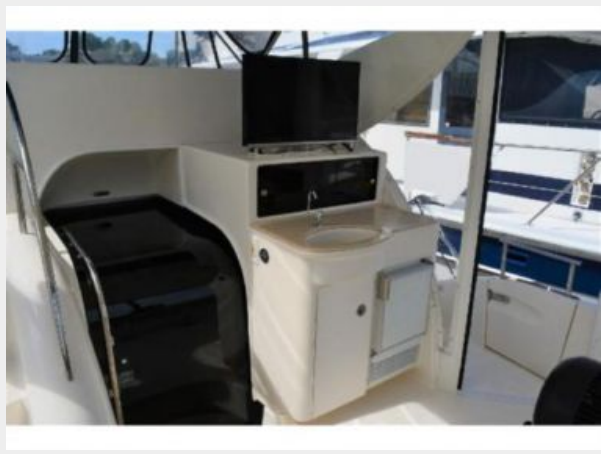
6



7



8



9



10



11



12



13



14



15



16



17



18



19



20



21



22



23



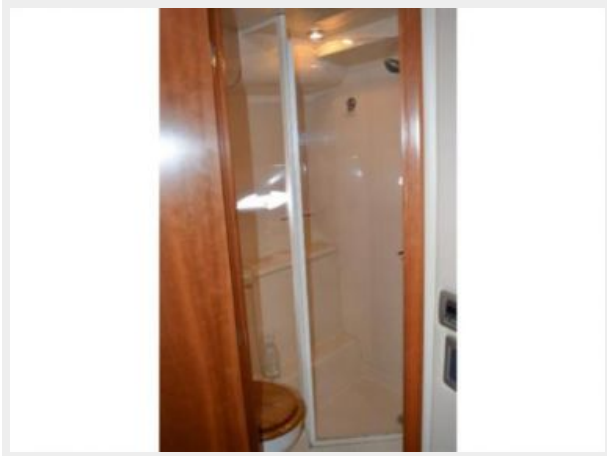
24



25



26



27



28



29



30



31



32



33



34



35



36



37



38



39



CONTACTS

Andrey Shestakov, leading yacht broker of the sales department of Shestakov Yacht Sales Inc. Shestakov Yacht Sales Inc., the official representative of the Miami/Fort Lauderdale FL headquarters.

Contact details

Email: andrey@shestakovyachtsales.com

Web: shestakovyachtsales.com/en/

Telephones

USA: +1(954)274-4435

Office hours

Monday – Saturday: **9:00 - 21:00** EDT

Sunday: **closed**

Address



Harbour Towne Marina, 850 NE 3rd St,
STE 213, Dania, FL 33004