

VISION FOR CHILDREN — HATTERAS



Builder: HATTERAS

Year Built: 1981

Model: Motor Yacht

Price: PRICE ON APPLICATION

Location: United States

LOA: 70' 0" (21.34m)

Beam: 18' 2" (5.54m)

Cruise Speed: 17 Kts. (20 MPH)

Max Speed: 20 Kts. (23 MPH)

Our experienced yacht broker, Andrey Shestakov, will help you choose and buy a yacht that best suits your needs **Vision For Children — HATTERAS** from our catalogue. Presently, at Shestakov Yacht Sales Inc., we have a wide variety of yachts available on our sale's list. We also work in close contact with all the big yacht manufacturers from all over the world.

If you would like to buy a yacht **Vision For Children — HATTERAS** or would like help answering any questions concerning purchasing, selling or chartering a yacht, please call **+1(954)274-4435**

TABLE OF CONTENTS

TABLE OF CONTENTS	2
SPECIFICATIONS	4
Overview	4
Basic Information	4
Dimensions	4
Speed, Capacities and Weight	4
Accommodations	4
Hull and Deck Information	4
Engine Information	5
DETAILED INFORMATION	6
Flybridge	6
Flybridge Electronics	6
Tender	7
Life Rafts	7
Davit Upgrade	7
Boat Deck	8
Foredeck	8
Side Decks	9
Pilothouse	9
Lower Helm Electronics	9
Galley	10
Main Salon	10
Aft Deck	11
Engine Room	12
Oil Change System	12
Gear	12
Shafts	12
Props	13

Electrical	13
Battery Chargers	13
Bilge Pumps	13
Compressor	14
Watermaker	14
Stabilizers	14
Fuel Transfer System	14
Fire System	15
Crew Quarters	15
Captains Cabin	15
Crew Cabin, Starboard	15
Crew Mess / Galley	16
Additional Features	16
Exclusions	16
Exclusions	16
Disclaimer	16
PHOTOS	18
CONTACTS	24
Contact details	24
Telephones	24
Office hours	24
Address	24

SPECIFICATIONS

Overview

A classic motoryacht with CAT C-15 engines installed in 2007. She is a proven cruiser that just got back from a cruise in the Bahamas. Owner just spent \$50K replacing the starboard stabilizer actuator and doing a bottom job.

She would make a great charter yacht. She is ready to go on her next trip.

Basic Information

Category: Motor Yacht	Model Year: 1981
Year Built: 1981	Country: United States

Dimensions

LOA: 70' 0" (21.34m)	Beam: 18' 2" (5.54m)
----------------------	----------------------

Speed, Capacities and Weight

Cruise Speed: 17 Kts. (20 MPH)	Max Speed: 20 Kts. (23 MPH)
Displacement: 108000 Pounds	Water Capacity: 400 Gallons
Holding Tank: 351 Gallons	Fuel Capacity: 1590 Gallons

Accommodations

Total Cabins: 3

Hull and Deck Information

Hull Material: Fiberglass

Engine Information

Engines: 1

Manufacturer: Caterpillar

DETAILED INFORMATION

Flybridge

- Access from lower helm
- Venturi style windshield
- Bimini top with stainless-steel frame with storage boot
- Radar arch with Century dome lights, with Burgee mast
- Chart flat with 25" X 21" D hinged plexiglass
- Destroyer style 28" stainless steel wheel
- Fiberglass deck with non-skid
- Drink holders, port and starboard
- (3) Helm / companion seats with foot and arm rests, Pompanette removable cushions and covers
- Custom U-shaped seating with cushions, storage below, and storage cover
- Custom cockpit table 33" L x 21" H with storage below with cover
- Custom wet bar with U-Line stainless-steel sink / refrigerator with icemaker
- Freezer, new 2019
- Liquor storage below
- Fresh water wash down
- Air draft 27'
- 110V outlet

Flybridge Electronics

- Caterpillar main engine electronic monitors
- Simrad 607 fish finder, chart plotter, radar
- Simrad autopilot
- Rudder angle indicator
- ICOM IC-M506 VHF with remote hand mic
- Bennett trim tabs
- Datamarine digital depth finder with cover
- Ritchie magnetic 7" compass with chrome binnacle
- Battery parallel
- Electronic single lever clutch & throttles with synchronizer
- Simrad 6012 XSE chart plotter / radar bundle
- Stabilizer control switch
- Bilge pump monitor panel
- Instrument lights with dimmer
- Search light controls / Carlisle & Finch 10" electric remote (2)
- Kahlenberg Triple Trumpet horns with 110V air compressor

Tender

- Boston Whaler 17' Montauk / center console, 1980, with Yamaha 90-hp, 4-stroke outboard with electric start, power trim and tilt
- Yamaha instrumentation tach & speedometer
- Simrad GPS / fish finder
- Center console with windshield and stainless-steel grab rail
- 13" Stainless-steel steering wheel
- Lowrance digital depth finder
- Bilge pump
- NAV lights
- Standard VHF with antenna
- Ritchie magnetic 4" compass
- Fire extinguisher
- 2-Cup plexiglass drink holder
- Stainless-steel bow rail
- Stainless-steel grab rails, port and starboard
- Bimini top with storage boot
- Swim ladder, 4-step
- Cooler with seat cushion and back rest
- (6) Rod holders
- (1) Paddle
- (2) Scuba tank holders, (2) tanks
- 12V Battery with box
- Battery switch
- Bench helm seat with facing forward / facing aft back-rest
- Gas tank, approx. 20 gal.
- (2) Fenders, 28" x 10" with covers
- Bottom painted
- Strong back
- Chocks with tie downs
- Storage cover
- 3-blade aluminum prop, 13-1/4 X 17 K
- Forward anchor / storage locker
- (2) Transom ski eyes

Life Rafts

- (2) 6-Man Revere canister style 4 / chocks and tie downs
- Hydro static release

Davit Upgrade

- MarQuipt 3500# with stand pipe
- Hydraulic with boom & rotation

Boat Deck

- Fiberglass painted non-skid
- Yacht ensign flagstaff teak 44" high gloss varnish

Foredeck

- Bow pulpit with teak inlay
- Bow flag staff 43" high gloss varnish
- Plath 32V horizontal windlass with capstan and chain wildcat
- Approximately 200' x 3/8" chain with swivel shackle
- Bruce style anchor with stainless steel anchor chute with roller
- 15" Stainless-steel cleats with chocks & chafe guards, port and starboard
- Teak foredeck and side decks
- Reconditioned teak decks
- Stainless steel bow rail 1-1/4"
- MarQuipt stainless-steel fender racks port and starboard (2 each side)
- (4) Fenders 36' x 13" fenders with black cloth covers
- Dunnage boxes with custom teak lids, port and starboard, with custom high gloss varnished lids
- Danforth anchors with holders, port and starboard
- Foredeck bench seat with cushions and cover
- (2) 50-Amp electric dockside receptacles, with breakers
- 125V / 250V Hubbell stainless-steel inlets
- (3) 50-Amp 50' chore cords
- Dockside water inlet with quick disconnect fitting
- Hubbell Cable TV / telephone inlet with cords 50' (2)
- Raised bulwarks around fore and side decks
- Fore deck crew ventilation / escape hatch 30" X 30"
- Safety hand rail, 29" H, fore and side deck
- High-gloss varnish teak handrail with 2 intermediate safety lines
- Hinged hand rail gate, port and starboard, at pilothouse doors
- Port and starboard midship + 3/4 cleats 12" stainless-steel with chafe guards
- Teak step pads at boarding gates
- (2) Port cap rail holding tank pump out fittings
- (2) Port cap rail fuel tank deck fills
- (1) Starboard cap rail fuel tank deck fill
- (1) Starboard cap rail holding tank deck pump out fittings

Side Decks

- 23" Wide teak side decks
- Cabin top overhangs with (3) courtesy deck lights
- Fashion boards, midship and wing door
- Boarding gates just forward of wing doors, port and starboard
- 30" Ring buoys with strobe lights, port and starboard
- High-gloss varnished teak boat hooks with holder, 10', port and starboard

Pilothouse

- Headroom: 6'8"
- Upgraded headliner with 120V and 32V overhead lighting
- Sliding doors, port and starboard
- Satin finished varnished teak flooring
- High-gloss varnished door frames and window sill frames
- 32V and 12V Breaker sub panel
- Windows have dark blue textilene covers
- Windshield 2-speed wipers with 22" blades and fresh water washers
- Flybridge access is via a 7-step stair / ladder
- Aft bulkhead teak with breaker sub panel
- Stairwell to forward crew quarter / engine room access
- Gear locker
- Door to galley
- Bench seat with foot rest and storage below with chart drawers
- Air conditioning
- Overhead electronics panel
- Centerline lower helm
- 22" Destroyer style, stainless-steel steering wheel
- Caterpillar electronic engine displays
- (3) Automatic / manual bilge pump switches
- Breaker panel / shore to generator transfer switches

Lower Helm Electronics

- Simrad plotter, 2019
- Simrad radar / transducer, 2019
- Garmin GPS Map 4415 chart plotter with 4" display screen
- ICOM IC-M412 VHF
- (2) Datamarine Digital International Offshore depth finders
- Dytek S1800 water temperature gauge
- Wind Data SYS wind/speed/direction (Wind Data SY5)

- Bennett trim tabs with indicator
- Simrad AP28 autopilot with remote
- Control panel / high water alarm
- Ritchie 6" magnetic compass
- (2) Quartz Bey Berk International 6" brass clocks
- Bey Berk International 6" brass barometers
- ACR 406 MHZ EPIRB
- (2) Carlisle & Finch 10" search light controls, 32V electric remote
- Upgraded electronic clutch and throttles with synchronizer
- Back-up manual controls with clutch and throttles
- Naiad stabilizer control with bridge remote
- CO2 manual pull system
- 120V Breaker panel
- Binocular holder with high-gloss teak varnish
- VDO rudder angle indicator
- Rudder indicator in autopilot
- Level gauge

Galley

- The galley is located on the main deck between the pilothouse and main salon.
- There is a privacy door between the galley & main salon, and between the galley and pilothouse
- Headroom is 6'9"
- Overhead lighting
- Vinyl flooring
- Sliding windows with textilene covers, port and starboard
- Matching teak cornices with privacy blinds
- AC electrical sub breaker panel
- Custom pantry storage cabinet with sliding doors
- Upgraded Corian counter top
- Single stainless-steel sink with garbage disposal
- Grohe faucet with sprayer
- Insta Hot
- Custom additional storage lockers with spice rack
- Ample under-counter storage
- GE stainless-steel Eterna Series built-in microwave
- GE stainless-steel 5-burner stove with sea rails
- GE stainless-steel double door refrigerator with freezer and ice & water dispenser
- Bosch stainless-steel dishwasher

Main Salon

- Headroom is 6'8"
- Upgraded headliner
- Teak cornices with drapes and drapes and privacy blinds
- Tinted sliding windows with screens, port and starboard
- Original teak paneling
- Carpeting
- L-shaped sofa with custom matching end tables
- (2) Swivel barrel chairs with custom table
- Custom TV / CD storage cabinet with tambour doors
- Samsung flat screen 19" TV with remote control
- Sony DVD / VHS player
- Cocktail table
- Tiffany glasses in custom side cabinet
- Custom bookshelf at stairwell to owner / guest cabins
- Yamaha CD player with speakers in main salon and aft deck, with volume controls
- Air conditioning

Aft Deck

- 24,000 BTU air conditioning, with thermostat
- Headroom is 6'10"
- Teak deck with high-gloss teak varnished interior
- High-gloss varnished teak wing doors with locks, port and starboard
- (3) Overhead lights with dimmers
- Tinted sliding windows with screens and locks, port and starboard
- Tinted Lexan solid enclosure
- 50-Amp dockside receptacles with breakers, port and starboard
- Dockside water inlet
- Dual cable TV / telephone inlets with (2) 50'cords
- Stainless-steel 14" cleats with chocks
- Deck drains, port and starboard
- Fresh water wash down for swim platform
- J-hook rope holders, port and starboard
- Solid weatherboards from hand rail to toe rail
- Double doors with viewing windows access the main salon
- Wet bar with stainless-steel sink and cold water spigot
- Accessory drawer for liquor storage
- Under counter storage and pegged glassware holders
- U-Line icemaker
- Upscale McGuire of San Francisco furniture
- Dining table with leaf and dust cover, seats 6 to 8
- (6) McGuire dining chairs with cushions
- (4) McGuire casual chairs with cushions

- (2) McQuire combo ottoman / cocktail tables with cushions
- Access on centerline to swim platform
- Dual stereo speakers
- 110V Outlet with GFI protector

Engine Room

- Twin Caterpillar C-15 diesels, rated 853 H.P @2300 RPM's, hours: port - 5,022; starboard - 5,011
- Inline 6-cylinder turbo with Airsep filter
- (2) Spare Airsep filters on board
- Start/stop and hour meters
- Updated exhaust risers with fiberglass coating
- Headroom is 9'
- Full beam
- Access forward bulkhead from crew quarters
- Overhead lighting is 32V and 110V fluorescent lights
- (4) Exhaust blowers, 110V
- Work bench with 3-1/2" vice 62" L x 32" W
- Ample storage spare parts bins
- 32V Breaker panel
- Ample 110V receptacles with GFI breakers
- Pencil sharpener
- 20" Circulation fan, 110V
- Craftsman bench grinder 1/4 HP, 6" X 1/2" wheel

Oil Change System

- Main, gears, generators
- 110V Brass impeller pump
- Selector manifold

Gear

- Twin Disc 2.54-1 ratio, model MG511 4SC, installed 2007

Shafts

- Aquamet 22 3" with stub shaft couplers
- Upgraded shaft logs with dripless seals and spares on shaft 20'

- Cutlass bearings and dripless seals replaced
- Spurs new 2020

Props

- Michigan 4-blade Nibral 40" D x 34" pitch / new October 2014
- (4) Nibral 39" X x 37.5' pitch spare props

Electrical

- (2) Northern Lights 30 kW generators with sound shield, hours: port - 3,554; starboard - 3,504
- Racor 500 water separator fuel filter with vacuum gauge
- Remote start / stop in pilothouse
- Engine room gauges, water temp, oil pressure, volt meter start and stops
- Upgraded manual water temp, oil pressure gauges
- Racor 500 water separator fuel filter with vacuum gauge
- Remote start / stop in pilothouse
- Engine room gauges, water temp, oil pressure, volt meter start and stops
- Upgraded manual water temp, oil pressure gauges
- 12V / 24V/ 32V / 110V / 240V systems
- (4) Main engine batteries, 24V, with battery parallel 20'
- (2) Generator 12V batteries
- (2) 32V Wet cell house battery banks
- (1) 12V Battery for tender
- (1) D4 12V wet cell with 12V charger
- All batteries are in fiberglass boxes with lids
- Battery on / off switches mains and house batteries
- (2) Isolation transformers with boost
- 120V / 240V breaker panel, starboard in engine room

Battery Chargers

- 12V for Electronics
- 32V, 40-amp for analytic systems
- 24V, 40-amp / charger for main engines
- 12V, 40-amp / charger for generators

Bilge Pumps

- (3) Automatic / manual bilge pumps, 32V, with high water alarms
- (2) Automatic / manual emergency sump pumps, 110V

Compressor

- Craftsman 110V / 125 PSI pressure gauge
- Hose for pneumatic tools
- Compressor for Kahlenberg Triple Trumpet horns

Watermaker

- FCI Aquamiser, 600 gpd
- New membrane, 2019
- Automatic fresh water flush
- Particle filters: (1) 20 micron, (1) 5 micron, (1) charcoal

Stabilizers

- Naiad 251-1 stabilizers, main control on pilothouse, remote control on flybridge, and low oil indicator at pilothouse
- 7.5 sq. ft. fins - dropped and seals replaced March 2017
- New actuator starboard side with new teak block 20'

Fuel Transfer System

- (3) Fiberglass tanks integral on centerline in bilge: #1-300 gals; #2- 490 gals; #3-800 gals
- Mid / day tank
- (2) Fuel transfer pumps with 110V / tut hill / Fillrite
- Selector manifold for 3 tanks
- 3rd Fuel transfer pump 110V on all three tanks with fuel polishing system
- All fuel transfer pumps run through dual Racor 1000 filters
- Deck fills at cap rail, port and starboard
- Racor dual 1000 4 / 30 micron fuel filters
- Deck fills port and starboard cap rails
- Racor dual 1000 4 / 30 micron main engine filters
- Main engine Racors with selector valve & vacuum gauges
- Fuel primer pump, 12V for main engines, port and starboard
- CAT 1R-0749 canister secondary main engine filters
- Racor 500 generator fuel filters, with vacuum gauge
- Clean fuel fill on fuel prime pump with Racor 500 filter with vacuum gauge

Fire System

- CO2 system engine room dual tanks
- Hand-held extinguishers throughout the boat
- Manual fire pull / pilothouse

Crew Quarters

- Headroom is 6'9"
- Located in bow
- Access from pilothouse circular stairwell with lights
- Stairwell carpet runner
- Forepeak access to chain / rode locker with divider
- Forepeak stall shower
- Fresh water head / galley Maid and privacy door
- Sink with mirrored medicine cabinet with storage below
- Privacy door with lock to crew head

Captains Cabin

- Head room is 6'3"
- Single berth with drawers and cabinet below
- Reading light
- (2) Opening frosted port lights
- Overhead lights on dimmer
- Cedar lined hanging locker with 2-drawer dresser below
- Custom hinged shelf 4' L x 6" W
- Privacy door to head and from crew mess

Crew Cabin, Starboard

- Upper and lower berths
- Upper berth has reading light
- Samsung 18" flat screen TV / upper berth
- (2) Opening frosted port lights
- Overhead lights on dimmer
- Lower berth with drawers below and reading light
- Built-in 4-drawer dresser
- Hanging locker
- Privacy door with lock
- Vinyl flooring

- Access to bilge with 30-gallon hot water heater

Crew Mess / Galley

- Crew dinette, seats 2
- Bookshelf with sea rail
- GE upright refrigerator with freezer
- Ample built-in storage cabinets
- Overhead lights on dimmers
- Opening port light with privacy curtain to port
- Telephone jack
- HP OfficeJet 4930 printer / fax machine
- 110V outlet
- Zee Ships first aid kit
- Vinyl flooring
- Washer and dryer, new 2019
- Access door to engine room

Additional Features

- Fender slide track hull side, port and starboard
- Custom hull / deck drains to prevent hull streaks
- Textilene lower helm windshield cover
- Updated Matterhorn white exterior paint
- Divided anchor chain / rode locker
- Bottom job 20' prop speed on running gear / hull waxed

Exclusions

- A detailed list will be provided at time of sale

Exclusions

Owner's personal belongings.

Disclaimer

The Company offers the details of this vessel or yacht in good faith but cannot guarantee or warrant the accuracy of this information nor warrant the condition of the vessel. A buyer should instruct his representatives, agents, or his surveyors, to investigate such details as the buyer

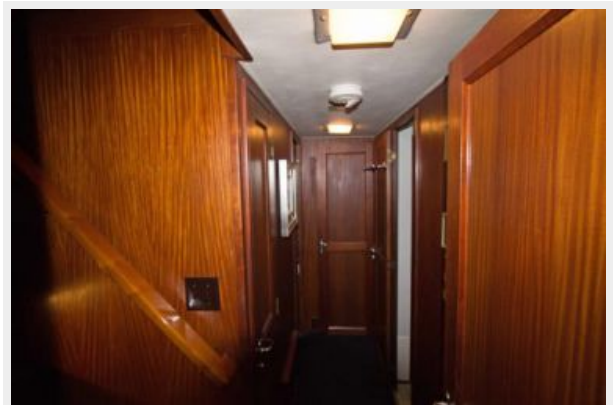
desires validated. This vessel or yacht is offered subject to prior sale, price change, or withdrawal without notice.

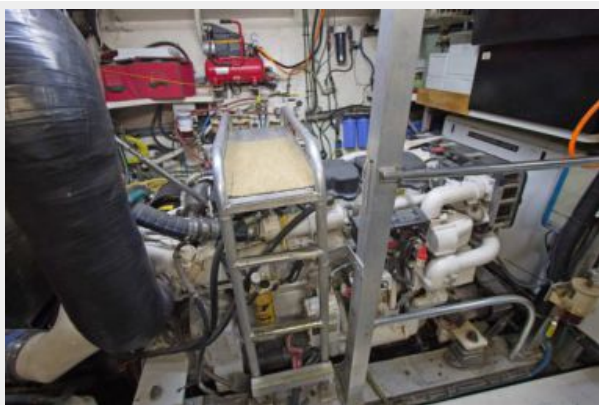
PHOTOS













CONTACTS

Andrey Shestakov, leading yacht broker of the sales department of Shestakov Yacht Sales Inc. Shestakov Yacht Sales Inc., the official representative of the Miami/Fort Lauderdale FL headquarters.

Contact details

Email: **andrey@shestakovyachtsales.com**

Web: shestakovyachtsales.com/en/

Telephones

USA: **+1(954)274-4435**

Office hours

Monday – Saturday: **9:00 - 21:00 EDT**

Sunday: **closed**

Address



Harbour Towne Marina, 850 NE 3rd St,
STE 213, Dania, FL 33004