

SEAQUELL — LEGACY YACHTS



Builder: LEGACY YACHTS

Year Built: 2005

Model: Motor Yacht

Price: PRICE ON APPLICATION

Location: United States

LOA: 42' 0" (12.80m)

Beam: 13' 7" (4.14m)

Max Draft: 4' 6" (1.37m)

Cruise Speed: 17 Kts. (20 MPH)

Max Speed: 22 Kts. (25 MPH)

Our experienced yacht broker, Andrey Shestakov, will help you choose and buy a yacht that best suits your needs **Seaquell — LEGACY YACHTS** from our catalogue. Presently, at Shestakov Yacht Sales Inc., we have a wide variety of yachts available on our sale's list. We also work in close contact with all the big yacht manufacturers from all over the world.

If you would like to buy a yacht **Seaquell — LEGACY YACHTS** or would like help answering any questions concerning purchasing, selling or chartering a yacht, please call **+1(954)274-4435**

TABLE OF CONTENTS

TABLE OF CONTENTS	2
SPECIFICATIONS	5
Overview	5
Basic Information	5
Dimensions	5
Speed, Capacities and Weight	5
Accommodations	6
Hull and Deck Information	6
Engine Information	6
DETAILED INFORMATION	7
Overview	7
Exclusions	9
Disclaimer	9
PHOTOS	10
2	10
3	10
4	10
5	10
6	10
7	10
8	11
9	11
11	11
10	11
12	11
13	11
14	12
15	12

16	12
17	12
18	12
19	12
21	13
20	13
22	13
23	13
24	14
25	14
26	14
27	14
28	14
29	14
30	15
31	15
32	15
33	15
34	15
35	15
36	16
37	16
38	16
39	16
40	16
41	16
42	17
43	17
44	17

45	17
46	17
47	17
48	18
49	18
50	18
51	18
52	18
53	18
54	19
55	19
56	19
57	19
58	20
59	20
60	20
61	20
62	20
63	20
64	21
65	21
CONTACTS	22
Contact details	22
Telephones	22
Office hours	22
Address	22

SPECIFICATIONS

Overview

Bow & Stern Thrusters Single Cummins QSM-11 660 HP Diesel Engine W/1672 Hours & Northern Lights 6kw Diesel Generator W/607 Hours SEAQUELL is a wonderful Mark Ellis designed 42 Legacy. She is loaded with upgrades and ready for her new owner! In 2018 the climate controlled pilothouse was converted to a fully enclosed hardback w/custom windows and door. There is also a stainless electric sunshade on the hardtop for covering the rear cockpit. With the single Cummins Diesel engine and bow & Stern thrusters this boat is both economical and easy to operate. SEAQUELL has been meticulously maintained and all service is up to date, don't miss out the opportunity to own this truly turn-key vessel!! Call today to schedule an appointment, viewings available seven days a week!

Basic Information

Category: Motor Yacht

Model Year: 2005

Year Built: 2005

Country: United States

Dimensions

LOA: 42' 0" (12.80m)

LWL: 38' 4" (11.68m)

Beam: 13' 7" (4.14m)

Max Draft: 4' 6" (1.37m)

Speed, Capacities and Weight

Cruise Speed: 17 Kts. (20 MPH)

Max Speed: 22 Kts. (25 MPH)

Displacement: 29000 Pounds

Water Capacity: 110 Gallons

Holding Tank: 40 Gallons

Fuel Capacity: 450 Gallons

Accommodations

Total Cabins: 1

Total Berths: 2

Total Heads: 1

Hull and Deck Information

Hull Material: Fiberglass

Hull Configuration: Modified V-Hull

Engine Information

Engines: 1

Manufacturer: Cummins

Model: QSM-11

Engine Type: Inboard

Fuel Type: Diesel

DETAILED INFORMATION

Overview

Accommodations

- Custom Hardback Fully Enclosed Air-Conditioned Pilothouse
- Pilothouse is Spacious W/Todd Ultra Leather Captains Chairs, L-Shaped Leather Settees Port & Starboard, And Removable Teak Table
- 3-Reverse Cycle Marine AC/Heating Systems
- Pressurized Hot/Cold Water
- Teak & Holly Floors Throughout
- Mahogany Cabinetry & Trim Throughout
- Custom Window Blinds & Solar Film To Keep The Heat Out
- Full Galley W/Stainless Double Sink, Refrigerator/Freezer, Stainless 2-Burner Propane Cooktop, & Stainless Convection Microwave
- L-Shaped Dinette Starboard Of Galley That Converts To Double Berth
- Full Head W/Stainless Sink, Vanity, VacuFlush Marine Toilet (W/Holding Tank & Macerator), & Shower Stall
- Forward Cabin W/Island Queen Berth, Port & Starboard Hanging Lockers, And Drawers Built Into Bed Base

Electronics

- Simrad 16" GPS/Plotter/Sounder/Radar (New 2020)
- Raymarine 4kw Closed-Array Radar
- ICOM IC-M502 VHF Radio W/AIS
- Simrad AP25 Autopilot
- Raymarine ST60 Depth
- Ritchie Compass
- Garmin GC10 Rear View Camera (New 2018)
- Samsung Flatscreen TV (New 2017)
- Toshiba DVD Player
- Alpine CD/Stereo W/4-Sony Speakers

Electrical

- Northern Lights 6kw Diesel Generator W/607 Hours
- 50A Shore Power Service W/Cord (New 2019)
- 30A Shore Power Service W/Cord
- AC/DC Electrical Panel
- 120/12v Service
- 6-Marine Batteries (New 2018)

- Battery Parallel Switch At Helm
- ProMariner 36A Charger (New 2019)
- Mastervolt Mass Combi 2500 Watt Inverter W/100A Charger
- Mastervolt Battery Combiner (New 2013)
- Mastervolt Battery Watch Smart Battery Protector (New 2013)
- High Output 210A Engine Alternator (New 2013)
- BEP MS3 Battery Monitor At Helm (New 2013)

Mechanical

- Bow & Stern Thrusters
- 4-Blade 7" Diameter Thruster Propellers
- Sidepower Bow & Stern Thruster Controls
- Cummins QSM-11 660 HP Diesel Engine W/1672 Hours
- ZF 1.759 to 1.0 Transmission
- 5-Blade 27"X28" Bronze Propeller
- PSS Dripless Shaft Seal
- 2 1/2" Stainless Propeller Shaft
- Shaft Line Cutters
- ZF Electronic Throttle/Shifter
- Capilano Hydraulic Steering System (New 2013)
- Cummins ED3 Digital Engine Display (New 2014)
- Under Water Exhaust
- Fireboy Engine Room Automatic Fire Suppression System
- Dual Racor Fuel Filter/Water Separators
- Algae X Fuel LGX 500-1/2" Fuel Conditioner System (New 2017)
- Reverso Oil Changing System
- Bronze Through Hull Fittings W/Groco Bronze Ball Valves
- Lenco Electric Trim Tabs
- 4-Automatic/Electric Bilge Pumps

Hull/Deck

- Mark Ellis Designed Hull
- Fiberglass Modified-V Hull
- Keel & Skeg Fully Protects Propeller
- Hull Is Vacuum Infused W/Vinylester Resin & Corecell Foam
- Oyster White Gelcoat Hull W/Flag Blue Boot Stripe
- Balsa Cored Deck W/White Gelcoat & Light Tan Nonskid
- Fully Enclosed Hardback Pilothouse W/Custom Rear Door & Windows (New 2018)
- 2nd Pilothouse Door Starboard Of Helm Station
- Todd Ultra Leather Helm & Companion Captains Chairs
- Hardtop W/Custom Electric Sunshade (New 2019)
- Varnished Teak Toe Rail Cap W/Stainless Rubrail
- Large Cockpit W/Integrated Aft Facing Seating Port & Starboard

- Storage Under Starboard Seating, Propane Locker & Grill Connection Under Port Seating
- Transom Door
- Heavy Duty Swim Platform W/Fold-Down Stainless Ladder & Weaver Snap Dingy Davits
- Stainless Bow Railing
- 5-Large Bomar Stainless Hatches, 3-On Cabin & 2-On Pilothouse
- 6-Stainless Port Lights
- Stainless Hawsepipes & Cleats
- Deep Fender Lockers Port & Starboard Side-Decks
- Muir Electric Windlass W/20kg Bruce Anchor & Deck Switches
- Spare Fortress Aluminum FX-22 Anchor
- Anchor Lockers Port & Starboard Of Windless W/Wash-Down
- Exterior Courtesy Lights

Exclusions

Owner's personal belongings.

Disclaimer

The Company offers the details of this vessel or yacht in good faith but cannot guarantee or warrant the accuracy of this information nor warrant the condition of the vessel. A buyer should instruct his representatives, agents, or his surveyors, to investigate such details as the buyer desires validated. This vessel or yacht is offered subject to prior sale, price change, or withdrawal without notice.

PHOTOS

2



3



4



5



6



7



8



9



10



11



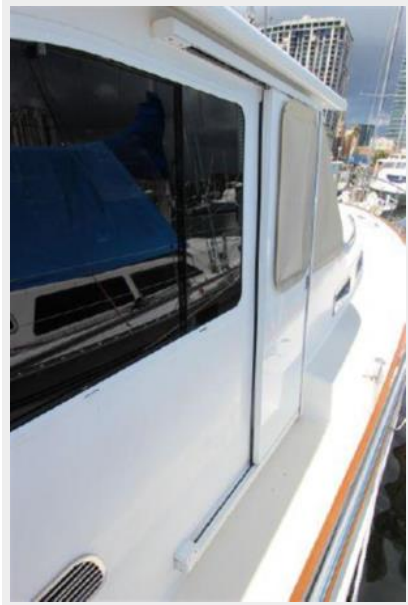
12



13



14



15



16



17



18



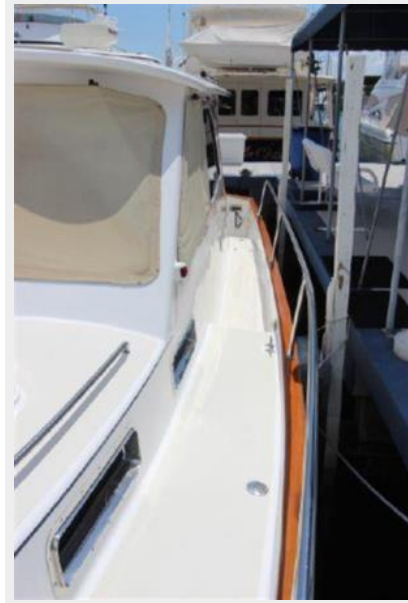
19



20



21



22



23



24



25



26



27



28



29



30



31



32



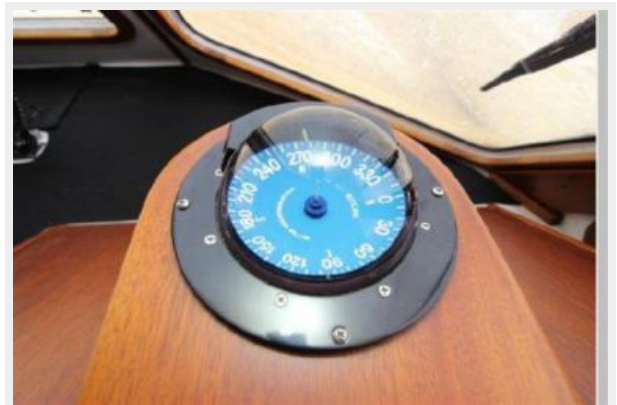
33



34



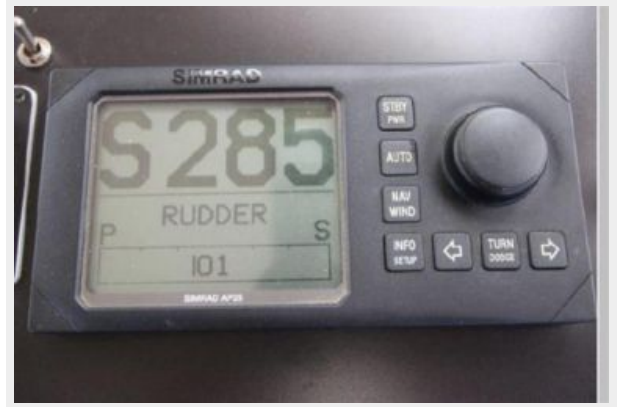
35



36



37



38



39



40



41



42



43



44



45



46



47



48



49



50



51



52



53



54



55



56



57



58



59



60



61



62



63



64



65



CONTACTS

Andrey Shestakov, leading yacht broker of the sales department of Shestakov Yacht Sales Inc. Shestakov Yacht Sales Inc., the official representative of the Miami/Fort Lauderdale FL headquarters.

Contact details

Email: andrey@shestakovyachtsales.com

Web: shestakovyachtsales.com/en/

Telephones

USA: +1(954)274-4435

Office hours

Monday – Saturday: **9:00 - 21:00** EDT

Sunday: **closed**

Address



Harbour Towne Marina, 850 NE 3rd St,
STE 213, Dania, FL 33004