

## CARPE DIEM — ALBIN



**Builder:** ALBIN

**Year Built:** 2000

**Model:** Sport Fisherman

**Price:** PRICE ON APPLICATION

**Location:** United States

**LOA:** 29' 9" (9.07m)

**Beam:** 9' 0" (2.74m)

**Min Draft:** 3' 2" (0.97m)

**Max Draft:** 4' 0" (1.22m)

**Cruise Speed:** 16 Kts. (18 MPH)

**Max Speed:** 22 Kts. (25 MPH)

Our experienced yacht broker, Andrey Shestakov, will help you choose and buy a yacht that best suits your needs **Carpe Diem — ALBIN** from our catalogue. Presently, at Shestakov Yacht Sales Inc., we have a wide variety of yachts available on our sale's list. We also work in close contact with all the big yacht manufacturers from all over the world.

If you would like to buy a yacht **Carpe Diem — ALBIN** or would like help answering any questions concerning purchasing, selling or chartering a yacht, please call **+1(954)274-4435**

# TABLE OF CONTENTS

TABLE OF CONTENTS	2
SPECIFICATIONS	5
Overview	5
Basic Information	5
Dimensions	5
Speed, Capacities and Weight	5
Accommodations	6
Hull and Deck Information	6
Engine Information	6
DETAILED INFORMATION	7
Overview	7
Exclusions	9
Disclaimer	9
PHOTOS	10
2	10
3	10
4	10
5	10
6	10
7	10
8	11
9	11
10	11
11	11
12	11
13	11
14	12
15	12

16	12
17	12
18	12
19	12
20	13
21	13
22	13
23	13
24	13
25	13
26	14
27	14
28	14
29	14
30	14
31	14
32	15
33	15
35	15
34	15
37	16
36	16
39	16
38	16
CONTACTS	17
Contact details	17
Telephones	17
Office hours	17
Address	17



---

# SPECIFICATIONS

---

## Overview

---

\$5,000.00 Price Reduction "Carpe Diem" has a full set of Ray Marine electronics installed in 2017. The single 300hp Yanmar diesel purrs like a kitten. The full functioning auto-pilot allows you to program a course and let the vessel do the work. The owner has made many upgrades including a Isotherm refrigerator and a handy box for his EPIRB. The fabricated Stainless Steel bimini does away with the need to traditional bows needed to support this structure. Comfortable deck chairs and shade screens provide additional seating and comfort on the aft deck. A hot/cold handheld fresh water hose on the aft transom allows for a quick rinse after you swim. Down below enjoy the AC system along with 6'+ standing headroom in the cabin as well as the head. Cruise along at 15-17Knts or open her up and move along as 20-22Knts.

## Basic Information

---

**Category:** Sport Fisherman

**Model Year:** 2000

**Year Built:** 2000

**Country:** United States

## Dimensions

---

**LOA:** 29' 9" (9.07m)

**LWL:** 24' 0" (7.32m)

**Beam:** 9' 0" (2.74m)

**Min Draft:** 3' 2" (0.97m)

**Max Draft:** 4' 0" (1.22m)

**Clearance:** 12' 0" (3.66m)

**MFG Length:** 28' 0" (8.53m)

## Speed, Capacities and Weight

---

**Cruise Speed:** 16 Kts. (18 MPH)

**Max Speed:** 22 Kts. (25 MPH)

**Displacement:** 8500 Pounds

**Water Capacity:** 36 Gallons

**Holding Tank:** 10 Gallons

**Fuel Capacity:** 132 Gallons

---

## Accommodations

---

**Total Cabins:** 1

**Total Berths:** 2

**Total Heads:** 1

---

## Hull and Deck Information

---

**Hull Material:** Fiberglass

---

## Engine Information

---

**Engines:** 1

**Manufacturer:** Yanmar

**Model:** 6LP-STE

**Engine Type:** Inboard

**Fuel Type:** Diesel

---

# DETAILED INFORMATION

---

## Overview

---

Accommodations The Albin 28 is very comfortable weekender and is very capable of short or long range cruising or fishing. The dinette converts to a spacious berth for two and the quarter berth is the size of a double bed. Stand up in the cabin or the head, both offer over 6' 2" headroom.

- Reverse Cycle A/C system (needs service or replacement)
- Port Screens
- 20" LED TV w/Antenna
- Closet
- Ample Storage
- Port Hole Screens

### Galley

- Microwave
- Refrigerator/Freezer-Isotherm NEW 2015
- 1 Burner Butane Stove
- Drawer & Cabinet Storage
- Hot/Cold Pressure Water
- Pull out faucet

### Electronics at Helm

- Raymarine Quantum Chart Plotter & Radar
- Depthfinder
- Remote Spotlight
- Bow Thruster
- 3-Windshield Wipers
- Trim Tabs
- Lighted Compass
- SeaStar Hydraulic Helm Steering
- Standard Horizon AIS VHF Radio

### Electrical Equipment

- 30 Amp Shore Power
- Cabin & Cockpit "courtesy" Lights
- 3-Wipers
- 2-Trumpet Horns

- Salt Water Pump for washdown
- 12v DC & 120v Shore power
- 50' Shore Power Cord
- Battery Monitor
- 4D & Group 27 Batteries
- Hot/Cold Fresh Water System
- 6-Gallon Hot Water tank
- 4-AC Outlets
- Navigation Lights
- Battery Charger
- Bow Thruster

## Deck

- White Hull
- Insulated Engine Box with Cushion Top
- Transom Hot/Cold Shower
- Live Baitwell
- Rod Storage Racks
- Rod Holders
- Tackle Drawers
- Swim Platform & Swim Ladder

## Tankage

- Fuel Tank: Aluminum 132 Gallons
- Fresh Water Tank: 38 Gallons
- Holding Tank: 20 Gallons

## Head

- Jabsco Electric Head-New 2016
- Sink w/pressure water & Extendable shower head
- Storage Locker
- Mirror

## Engine

- Yanmar: 300hp 6LP STE
- Inboard-Direct Drive
- Turbo Charged Diesel
- Fresh Water Cooled
- Engine hours: 1520
- NEW engine mounts 2019
- 1000hr engine service, Starter, Riser, Coolers, Timing Belt
- Engine serviced July 15, 2020



## Additional Upgrades

- 6-Gallon Hot Water Heater-New 2017
- Raw Water Cooler & Risers Replaced 2018
- Replaced Starter 2018
- Isotherm Refrigerator- \$900 Value -2015
- Side Curtains for Shade & Comfort

## Exclusions

---

Owner's personal belongings.

## Disclaimer

---

The Company offers the details of this vessel or yacht in good faith but cannot guarantee or warrant the accuracy of this information nor warrant the condition of the vessel. A buyer should instruct his representatives, agents, or his surveyors, to investigate such details as the buyer desires validated. This vessel or yacht is offered subject to prior sale, price change, or withdrawal without notice.

# PHOTOS

2



3



4



5



6



7



8



9



10



11



12



13



14



15



16



17



18



19



20



21



22



23



24



25



26



27



28



29



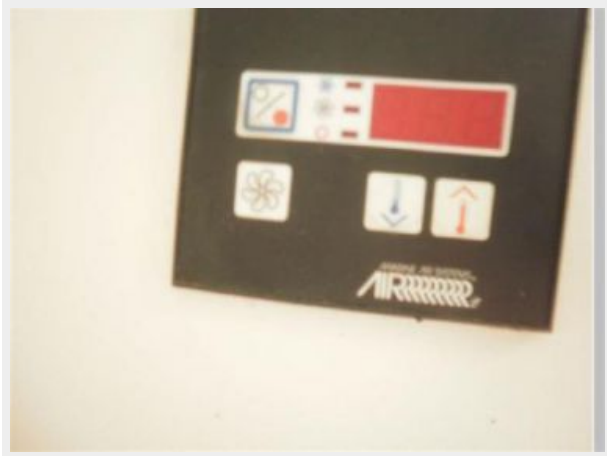
30



31



32



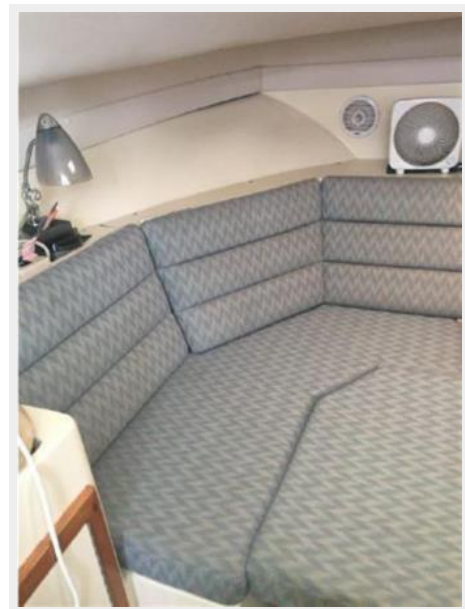
33



34



35



36



37



38



39





---

# CONTACTS

---

Andrey Shestakov, leading yacht broker of the sales department of Shestakov Yacht Sales Inc. Shestakov Yacht Sales Inc., the official representative of the Miami/Fort Lauderdale FL headquarters.

---

## Contact details

---

Email: [andrey@shestakovyachtsales.com](mailto:andrey@shestakovyachtsales.com)

Web: [shestakovyachtsales.com/en/](http://shestakovyachtsales.com/en/)

---

## Telephones

---

USA: +1(954)274-4435

---

## Office hours

---

Monday – Saturday: **9:00 - 21:00** EDT

Sunday: **closed**

---

## Address

---



Harbour Towne Marina, 850 NE 3rd St,  
STE 213, Dania, FL 33004