

## WAY OUT — HANSE



**Builder:** HANSE

**Year Built:** 2017

**Model:** Cruising Sailboat

**Price:** PRICE ON APPLICATION

**Location:** United States

**LOA:** 45' 7" (13.89m)

**Beam:** 14' 4" (4.37m)

**Min Draft:** 6' 0" (1.83m)

Our experienced yacht broker, Andrey Shestakov, will help you choose and buy a yacht that best suits your needs **WAY OUT — HANSE** from our catalogue. Presently, at Shestakov Yacht Sales Inc., we have a wide variety of yachts available on our sale's list. We also work in close contact with all the big yacht manufacturers from all over the world.

If you would like to buy a yacht **WAY OUT — HANSE** or would like help answering any questions concerning purchasing, selling or chartering a yacht, please call **+1(954)274-4435**

# TABLE OF CONTENTS

TABLE OF CONTENTS	2
SPECIFICATIONS	6
Overview	6
Basic Information	7
Dimensions	7
Speed, Capacities and Weight	7
Accommodations	7
Hull and Deck Information	8
Engine Information	8
DETAILED INFORMATION	9
HULL AND DECK	9
SAILS AND RIGGING	9
ENGINE & MACHINERY	10
ACCOMMODATIONS	10
GALLEY	13
HEADS	13
WATER SYSTEMS	14
ELECTRICAL	14
ELECTRONICS	15
OTHER EQUIPMENT	16
EXCLUSIONS	16
DISCLOSURE	16
DISCLAIMER	17
Exclusions	17
Disclaimer	17
PHOTOS	18
F03C3FF2-E5DE-4582-B5BD-0AC10C36E8A6	18
9327603A-C62D-412C-BD87-96CFB9B7CC9A_1_201_a	18

16529B18-6BE5-40DC-A165-9F37E671CD81_1_201_a	18
2CAAD3B8-B40E-4E0D-90FF-9EB41139E38D_1_201_a	18
CA4783F2-1BE5-46B6-9862-AC75F97017B6_1_201_a	19
ABCB938D-E3A8-47C8-AC7D-6D14828B5349_1_201_a	19
8A72B68E-6E04-4253-87E7-CFC860A91831_1_201_a	19
1305BCE8-7113-4EBE-93C2-94CDC59A31A2_1_201_a	19
9CCB6FDD-BB22-4B3E-88D5-C0329ACE21DF_1_201_a	20
C35E1727-7E07-41DB-AB57-80723F0F6914_1_201_a	20
03B88260-E642-4E8E-8BBE-762C041102D1_1_201_a	20
28B5FE37-6766-472F-B269-EABB5096FBEE_1_201_a	20
387DFB45-19A6-4E2F-AC35-104FC0C5B2DA_1_201_a	21
D64C882E-BC55-405D-BCBD-8B12B3759E8E_1_201_a	21
D56BCC65-96A2-40E6-ABCE-6751DCEF7629	21
C9CB9B42-C491-4A14-BA09-1F362D8BD604_1_201_a	21
CC627186-BC9E-4C78-BF27-37EA6D0230A8_1_201_a	22
FB95A4D5-6ADF-4041-9419-75196DAC8C59_1_201_a	22
46D15AAB-2781-4D38-AA54-4E3EAAF47CFF_1_201_a	22
16406F2F-30F7-4594-89DA-269C1906CCF0_1_201_a	22
3A8E242D-D9B1-413F-9F1D-0B1931CD1374_1_201_a	23
AE8FA1D7-2F3A-4CB1-AB9E-BBA509C02FCB_1_201_a	23
A718D234-91BF-4DB9-B4FA-B882856AC260_1_201_a	23
F8DD77A5-8B60-45B5-A30A-DC7DDE08E5D9_1_201_a	23
BBE82DA9-E26B-45F0-9B28-C9C651A72125_1_201_a	23
C7CA403F-B0E4-4AF7-A880-FDDEA9DD4DC0_1_201_a	23
FD5FC5D3-65F1-4B15-8535-F6613BD5AB9B	24
36D5422A-EBC6-478F-ACC2-33D88EF197F0_1_201_a	24
F9DDB254-69A2-43B4-9163-E2230CF060B0_1_201_a	24
AC5319FF-4752-4BDE-B746-ED98338237E9_1_201_a	24
F38724EF-4695-411B-A817-2C9E5384B3C3_1_201_a	25

---

4D5978BD-8F17-4705-BDC9-AA364D05309A_1_201_a	25
BC18835F-7C97-4977-B97F-5A8FA9BB5BD0_1_201_a	25
617BC260-FA00-4D19-AB4D-D30C95070010_1_201_a	25
2D2EFDB4-0F63-45C6-A5D6-A13B747FADAF_1_201_a	26
B6FCA573-3231-4A9F-8446-A8A9565E1824_1_201_a	26
54E023A9-589F-419D-9567-0FFDD9DB9B1E_1_201_a	26
57E7D4E3-981D-4988-BC3F-318E27DF94F5_1_201_a	26
F571752A-747B-44F7-93C3-E58F65816F30_1_201_a	26
90232F12-023D-4C76-82FB-7023A77E9BFA_1_201_a	26
E3DCB8EA-9585-40DB-A189-148885B2FF37_1_201_a	27
8E23C83B-4752-4EB2-A8C5-8F8D739D04FB_1_201_a	27
E05ED37C-5106-427D-AC0A-FE4512F4BF6E_1_201_a	27
0AD45573-7391-40E3-B7C5-066BC114D6D1_1_201_a	27
2457E58A-11B0-4906-83C5-38442E613CC4_1_201_a	28
6763FC3B-B855-4B01-A81D-7CA55DC62E71_1_201_a	28
7DB364E9-D422-4CBF-B23C-C258CF2D2A6C_1_201_a	28
F11FEC83-B491-4B33-B0BE-2ECF96817C12_1_201_a	28
E4AFA228-330F-4EDC-8D19-670E1C1A1C62_1_201_a	29
E9E4A827-67EB-4158-B104-8CE8B9862D07_1_201_a	29
1D440108-D95B-4379-B71C-65F8E5D05AC2_1_201_a	29
2F3FDD5E-E627-44D4-8168-BA1C79E872FE_1_201_a	29
30027DE1-AC8E-4129-B666-5D89CEB061F6_1_201_a	30
BE659DAC-77F2-41D2-BEB0-A2D7264D872E_1_201_a	30
D3E11370-37F3-4BEC-982D-9B10D73A399F_1_201_a	30
723471B6-713E-4EC6-AB5C-DCFC06432F24_1_201_a	30
40704AA9-8E87-4D91-A309-33B2B520853C_1_201_a	31
8CA81932-9C78-4F50-B6D7-BB3BD74D8E0D_1_201_a	31
9A525D27-BE84-45DE-8392-CA439E1310D9_1_201_a	31
66919942-A988-4120-AE5D-CCA7983D1989_1_201_a	31

---

---

11A2DB23-4E01-41E2-98EB-93C53A285FC9	32
EBA8917B-81A1-4E02-A025-23D15F2F8BF8_1_201_a	32
Hanse 2015 455 A1_B1_C2 Interior Design	32
CPYB Logo	32
Hanse_455_Deckplan_0614-3bc5e	32
<b>CONTACTS</b>	<b>33</b>
Contact details	33
Telephones	33
Office hours	33
Address	33

---

# SPECIFICATIONS

---

## Overview

---

At home on the high seas, the Hanse 455 has everything you could expect from a perfect cruising yacht. Why? Her lines are the creation of Judel/Vrolijk & co., one of the best and most experienced yacht designers in the world. This guarantees that she is fast, easy to sail and safe in any weather condition. Hanses are well known and stand out from other production boats as being very well built. With their fully glassed-in bulkheads, they provide a very stiff, strong hull and are known as a solid cruising boat that performs exceptionally well. The Hanse 455 is one of the great success stories of this famous German shipyard. Many in the US may not be aware of this, but they are the second-largest sailboat manufacturer in the world.

The wide, unobstructed decks are safe and low, providing excellent visibility and safety at sea moving about. All of the hatches and ports are flush-mounted. Outward opening ports provide an awning of sorts, allowing you to keep ports open and ventilation moving inside the boat in bad weather. The control lines are led aft to the helm positions beneath the deck, eliminating any trip hazard and keeping the deck clear for sure footing. Integrated halyard and sheet stowage boxes are at either helm as well, so no tangles of lines to contend with around the companionway or cockpit sole.

The Hanse 455 has one of the largest cockpits in her class, giving you and your guests plenty of room to relax, both underway and in port. WAY OUT also features a cockpit grill and sink beneath the helm seats and a refrigerated icebox in the cockpit table- all designed for your relaxation, convenience and entertainment. The wide drop-down swim platform is at just the right height for swimming, lounging, or boarding your dinghy. There is dedicated life raft stowage concealed by the swim platform, putting it right where you want it in the event of an emergency.

Below decks, the cabins are bright, spacious and inviting, with lots of storage and great ventilation. The elegant and spacious interior is comfortable to live in and has good storage throughout. The forward owner's suite, with an island bed and ensuite head, is unrivaled for its space and comfort.

The Hanse 455 is known for its irreproachable quality of construction, well thought out design and contemporary design. Performance is wonderful; with Jeffa self-aligning rudder bearings steering is a fingertips event.

WAY OUT was the culmination of years of research by the owners for the perfect boat. Once they identified the Hanse 455 for that purpose, they then outfitted it just the way they wanted, with almost every option Hanse had available. They custom-designed their canvas installation to include zip-in/zip-out Solbian solar panels. The galley was customized to include an additional Vitrofrigo drawer freezer. Generator, bow thruster, electric primary winches, upgraded Elvstrom sails... the list goes on and on.

If you are in the market for a great, very well outfitted and maintained cruising boat, you certainly

owe it to yourself to come see WAY OUT- you won't be disappointed! Call the listing broker today to see her for yourself or to arrange a virtual showing. She won't last long!

## Basic Information

---

**Category:** Cruising Sailboat

**Sub Category:** Performance Sailboat

**Model Year:** 2017

**Year Built:** 2017

**Country:** United States

**Coast Guard #:** 1274909

**Vessel Top:** Bimini Top

**Cockpit:** Yes

## Dimensions

---

**LOA:** 45' 7" (13.89m)

**LWL:** 40' 0" (12.19m)

**LOD:** 44' 6" (13.56m)

**Beam:** 14' 4" (4.37m)

**Min Draft:** 6' 0" (1.83m)

**Clearance:** 67' 6" (20.57m)

## Speed, Capacities and Weight

---

**Displacement:** 51140000 Pounds

**Water Capacity:** 119 Gallons

**Holding Tank:** 40 Gallons

**Fuel Capacity:** 58 Gallons

## Accommodations

---

**Total Cabins:** 3

**Total Berths:** 4

**Sleeps:** 9

**Total Heads:** 2

---

## Hull and Deck Information

---

**Hull Material:** Fiberglass

**Deck Material:** Composite Fiberglass

**Hull Configuration:** Fin & Bulb

**Hull Color:** LIGHT GREY

**Hull Finish:** Plastic

**Hull Designer:** judel/ vrolijk & co.

**Exterior Designer:** judel/ vrolijk & co.

**Interior Designer:** judel/ vrolijk & co.

---

## Engine Information

---

**Engines:** 1

**Manufacturer:** Volvo Penta

**Model:** D2-55

**Engine Type:** Inboard

**Fuel Type:** Diesel



---

# DETAILED INFORMATION

---

---

## HULL AND DECK

---

- 6' draft L-shaped keel
- Groco bronze flanged bronze seacocks with backer plates ('19)
- Semi-balanced, profiled rudder with Jeffa self-aligning needle bearings
- Bottom was stripped, barrier coated & bottom painted ('19)
- "Flexiteak Grey" synthetic teak decks, cockpit benches and helm seats
- 45# Delta anchor with 196' of 10mm chain
- Self-draining chain locker
- Quick electric windlass with hand-held wireless remote
- Dedicated sail locker accessed through hatch in foredeck
- Folding swim platform with "Flexiteak" deck
- Dedicated life raft storage on transom for easy deployment
- Stainless steel removable swim ladder for lifeline gates
- Stainless steel swim ladder for swim platform
- Folding teak cockpit table
- Isotherm 12v refrigeration in cockpit table
- Topsides Awlgripped "Light Grey" ('19)
- Bow and stern rails ('19)
- Stanchions & lifelines ('19)
- Port & starboard boarding gates ('19)
- Retractable mooring cleats (6)
- Opening overhead hatches (11)
- Custom Outland hatch covers for all hatches and ports
- Opening portholes (6)
- Fixed lights in topsides (6)
- Companionway drop board lowers and stows below the entryway
- Dodger with 1 1/4" SS tubing, aft and side grab bars
- Bimini with connector, 1 1/4" SS tubing and sight window
- Side curtains
- Cockpit grill under the starboard helm seat
- Freshwater sink under the port helm seat

---

## SAILS AND RIGGING

---

- Selden double spreader aluminum mast and boom ('19)
- Selden MDS low-friction slider system
- Mast base ('19)
- Selden boom vang

- Mid-boom sheeting
- Single line reefing led to cockpit
- Selden jib furler with self-tacker
- 1x19 Stainless steel Dyform wire standing rigging ('19)
- Dyneema halyards ('19)
- Custom "Lazy Bag" sail cover and lazy jacks ('19)
- Running rigging ('19)
- All lines led aft to helm stations
- Lewmar EVO #50 ST two-speed halyard winches
- Lewmar EVO #50 EST electric two-speed primary winches
- Lewmar EVO #50 ST two-speed secondary winches
- Spinlock line clutches (10)
- Integrated line stowage boxes at either helm station
- Elvstrom FCL 5 layer performance triradial cut full batten mail
- Elvstrom FCL 5 layer performance triradial cut self-tacking jib
- Elvstrom Gennaker with dousing sock and gear
- Sail area: 1108 sq. ft.
- I: 58'4"
- J: 18'0"
- P: 55'7"
- E: 19'5"

---

## ENGINE & MACHINERY

---

- Volvo Penta D2-55 53HP diesel engine with 220 hours
- Sound insulated engine room compartment
- Volvo sail drive
- Volvo 3-blade bronze feathering propeller
- Electric fuel tank gauge
- Double steering system with Y spoke GRP wheels
- Plastimo compass at each helm
- Quick retractable bow thruster
- 32,000 BTU heat/ air conditioning with 3 Marine Air units; saloon, forward cabin, aft cabins

---

## ACCOMMODATIONS

---

**Sail locker:** Forward of the master stateroom and accessed from a deck hatch, there is a huge sail locker. Access is by a stainless steel ladder and there is a tremendous amount of storage in here- plenty for fenders, dock lines, sails, etc.

**Master stateroom:** As you enter the master stateroom, there is a queen-sized 80" x 60" centerline walk-around berth. There are step-up areas on either side of the bed for access; the foot of the bed has gas-assist lifts and lifts up to reveal a huge storage area beneath it. There are shelves lining the hull on either side of the berth. At the head of the bed are cubbie spaces that are great for books, glasses and so on. Aft of the hullside shelves is matching double door lockers, with shelf space on one side and hanging the other in both. Additionally, there is a drop-front locker below and a fiddled shelf space above each of those. The headroom in here is 6'6". Cabin lighting and ventilation is provided by two flexible arm LED reading lights at the head of the bed, three overhead lights, overhead indirect lighting over the bed, two fixed ports in the hullsides and two opening hatches. This space has one of the three ship's air conditioning systems.

**Ensuite forward head:** The shower space is located on starboard in the master stateroom. There is a molded fiberglass seat and the shower wand is on a height-adjustable bar. Headroom in here is 6'6"; lighting is from one overhead light and an overhead hatch.

The sink and toilet space is on the port side of the cabin. Headroom in here is 6'4". As you enter, the sink is directly in front of you. There is locker space beneath the sink with sliding door storage; above the sink is mirrored door medicine cabinet storage. Lighting and ventilation are from an overhead light and a hatch.

**Saloon:** The saloon on the Hanse is light, bright, and spacious feeling. Light oak joinery, white housetop and bulkheads and cream leather create a feeling of spaciousness. The four opening hatches, four large opening ports, two hullside windows and the 6'7" headroom all play a part in creating that open feeling- no "down in a cave" with this boat!

On starboard is a huge U-shaped dinette, which can very comfortably seat 6-8. The bench seat on the corridor side of the table is hinged and will pivot in and out of the way when not in use; there is loads of storage inside that seat. The rest of the dinette seating also has storage beneath it; there is more storage along the hullside behind the back cushions. Above and behind the back cushions is shelf space, with the fixed port centered in that space. There are double door overhead cabinets forward of that and a single door cabinet aft.

If, for some reason, room for six to sleep comfortably in the three cabins isn't quite enough, you can drop the dinette table down and create a 92" x 60" berth that will accommodate any professional basketball player friends you may have.

On port, there is a 6'1" long L-shaped settee that can serve as a sea berth. There is storage beneath and behind that and a shelf with the fixed port centered in the space above, mirroring the starboard side. There is a double-doored locker at the forward end; at the aft end is a large locker door that conceals the electrical panels as well as some electronics.

**Nav station:** The nav station is just aft of the port settee and has a seat that tips up and stows under the nav table when not in use. The chart table is large enough for chart books and the overhead cabinet conceals the electrical panel and controls for a number of other things, keeping the cabin space looking clean.

In addition to the hatches and ports, there are five overhead lights, a number of flex arm reading lights and overhead indirect lighting controlled from a touchpad.

**Galley:** The galley is located on starboard and is L-shaped. The sinks are oriented toward centerline and have storage beneath them. To the right of the sinks is a top and front-loading refrigerator/freezer.

Moving around along the hull is the stove and oven. There is a nice sized drop-front locker beneath the stove for pots and pans. To the right of the oven is a custom installed drawer freezer (not normally an option on this boat).

Behind the counters is divided cubby storage the length of the counter; above those are the microwave and three large lockers with shelves.

Lighting and ventilation come from two overhead lights, under-cabinet lights and an overhead hatch. Headroom here is 6'5".

**Aft head:** The aft head is on port at the base of the companionway. Entering the space, the sink is directly in front of you, the head to the right and the separate shower stall to the left. The sink has a mirrored medicine cabinet above it and shelf space below with sliding doors. To the left, the shower compartment has a bi-fold door and molded fiberglass seat. The shower wand is on a height-adjustable bar. Lighting and ventilation are from an overhead light and a hatch. Headroom in here is 6'5".

**Aft staterooms:** The aft cabins have 6'6" headroom and nice full long sized 54" x 80" mattresses. A long shelf cubby is on centerline, there is storage beneath the bunk and each has a double door locker with half shelves and half hanging. Lighting and ventilation are provided by fixed cockpit and hullside portlights, overhead lights, an overhead hatch and an opening port.

- Three cabin/ two head layout
- Deluxe mattresses in all cabins
- Satin varnished "Italian Oak" interior
- "Noce Nero" cabin sole
- Portofino Comfort Leather "Cream" saloon upholstery

- Lowerable dinette table
- LED interior lighting
- Blinds for ports
- Shade/screen covers for hatches
- Outland hatch covers for all hatches and ports

---

## GALLEY

---

- “Seashell White” countertops
- Splash guard between sink and dinette
- Deep double stainless steel sinks w/covers
- Single lever stainless steel gooseneck water mixer
- Sink and single lever water mixer under port helm seat
- Stove countertop cover stows behind the stove when in use
- Eno 3-burner LPG stove with oven
- Self-draining LPG bottle storage in cockpit
- Built-in LPG gas BBQ grill in cockpit under starboard helm seat
- Top and front-loading icebox
- Isotherm 12v refrigeration
- Custom fitted Vitrofrigo 120V/12v drawer freezer
- Isotherm 12v refrigeration in cockpit table
- Panasonic microwave oven
- Pots, pans and utensils
- Dinnerware
- Cutlery
- Waste bin

---

## HEADS

---

### Forward head compartments

### Starboard

- Single lever shower mixer on adjustable height bar
- Fiberglass shower seat
- Non-skid fiberglass sole
- Electric shower sump pump
- Two mirrored drop-front lockers with shelves

- Molded fiberglass compartment for easy wipe-down

## Port

- “Seashell White” countertops
- Round frosted vessel sink
- Single lever water mixer
- Electric floor drain sump pump
- Jabsco electric seawater flush marine toilet
- Molded fiberglass compartment for easy wipe-down

## Aft head

- “Seashell White” countertops
- Round frosted vessel sink
- Single lever water mixer
- Non-skid fiberglass sole
- Separate shower stall with bi-fold door
- Electric shower sump pump
- Fiberglass shower seat
- Single lever shower mixer on adjustable height bar
- Jabsco electric seawater flush marine toilet
- Molded fiberglass compartment for easy wipe-down

## WATER SYSTEMS

---

- Quick electric hot water heater
- Spectra Catalina 340Z 14GPH water maker
- Electric water and holding tank gauges
- Electric deck washdown pump
- Freshwater hot/cold swim shower
- Freshwater sink under port helm seat
- Electric bilge pump
- Manual bilge pump

## ELECTRICAL

---

- 240V AC 50A shore power connections with cord
- 120V AC electrical panel

- 120V duplex receptacles with GFCI protection throughout
- Receptacles in saloon and master stateroom have USB jacks
- 12v DC electrical panel
- Main circuit board replaced ('19)
- Mastervolt Charger/Inverter ('19)
- Three Firefly Oasis carbon foam AGM house batteries (348 AH) ('19)
- Varta Group 27 AGM windlass/thruster battery ('19)
- Lifeline Group 27 AGM engine & generator starting battery ('19)
- Balmar SG200 battery monitor ('19)
- Fisher-Panda 8kW generator w/ hours
- Solbian 100W solar panels mounted on bimini (4)
- Blue Sky 3000 charge controller
- Victron Energy isolation transformer ('19)
- LED lighting throughout
- Indirect overhead lighting in saloon
- SLS touch screen lighting control and dimmer
- Removable LED cockpit table light
- Courtesy LED lighting in cockpit and companionway
- LED navigation lights
- Deck light
- Spreader lights

## ELECTRONICS

---

- Dual Navpods
- B&G 4G broadband radar ('19)
- Navionics Platinum chart packages for US East Coast, Caribbean
- B&G Zeus 9" chart plotters at each helm
- B&G Class B AIS transponder
- B&G H5000 multi displays at helms (4)
- B&G wind transducer ('19)
- B&G forward-looking sonar transducer
- B&G speed/depth/temp transducer
- B&G autopilot with dual H5000 control heads at each helm
- B&G autopilot wireless remote
- B&G RC42 fluxgate gyro compass
- B&G Hydra CPU computer
- B&G V50 VHF radio at nav station
- B&G wireless VHF mic
- Mast mounted EchoMax radar reflector ('19)
- GoFree wireless link
- Iridium GO satellite communication w/built-in external antenna
- 3-4G internet and Wi-Fi antenna

- Fusion MS-AV750 Bluetooth multimedia radio/ CD/DVD stereo system
- Fusion stereo remote at helm
- Saloon speakers
- Cockpit speakers
- Majestic 32" 12v flat-screen television
- Digital Yacht DTV-100 television antenna
- Apple TV 3rd Generation TV source
- Apple TV will mirror chart plotter displays

---

## OTHER EQUIPMENT

---

- Kato Marine Voyager davits
- Ocean Safety 4-person canister life raft (recertified 2020)
- Adventure Medical Marine 600 medical kit
- ACR Rapid Ditch ditch bag
- ACR Global Fix V4 406 MHz EPIRB (battery valid thru 1 /2027)
- PFD's
- Emergency tiller
- Jack lines
- Harnesses
- Fenders and dock lines
- Cockpit cushions
- Cockpit table cover
- Pedestal covers (2)
- Electronic safe in owner's cabin
- Bosun's seat
- Paper charts for US East Coast, Bahamas & Caribbean
- Loads of spares- engine, generator, water maker and much more..

---

## EXCLUSIONS

---

If it shows, it goes!

---

## DISCLOSURE

---

As were many boats, "WAY OUT" was stored on land at Nanny Cay Marina and damaged during Hurricane Irma. Repairs were professionally done and a survey was performed following the repairs. The Findings and Recommendations were all completed prior to the boat leaving Tortola. That survey is available for inspection.



---

## DISCLAIMER

---

Potential purchasers should assume that any items on the vessel at the time of viewing, but not specifically listed on this specification sheet, are not included with the sale of the yacht. These specifications are believed to be correct but cannot be guaranteed. Specifications are provided for information purposes. Data was obtained from sources believed reliable but is not guaranteed by owner or brokers. Engine hours are approximate, may be reported verbally by the seller, and are recorded at the time and date of the original listing of this vessel. Owner's use during the time of this listing may affect the total engine hours upon a prospective buyer's inspection. Buyer assumes responsibility to verify all speeds, consumptions, capacities and other measurements contained herein and otherwise provided, and agrees to instruct his/her agents or his/her surveyor to confirm such details prior to purchase. This vessel is subject to sale, price and inventory changes or withdrawal from market without notice.

---

## Exclusions

---

Owner's personal belongings.

---

## Disclaimer

---

The Company offers the details of this vessel or yacht in good faith but cannot guarantee or warrant the accuracy of this information nor warrant the condition of the vessel. A buyer should instruct his representatives, agents, or his surveyors, to investigate such details as the buyer desires validated. This vessel or yacht is offered subject to prior sale, price change, or withdrawal without notice.

# PHOTOS

**F03C3FF2-E5DE-4582-B5BD-0AC10C36E8A6**



**9327603A-C62D-412C-BD87-96CFB9B7CC9A\_1\_201\_a**



**16529B18-6BE5-40DC-A165-9F37E671CD81\_1\_201\_a**



**2CAAD3B8-B40E-4E0D-90FF-9EB41139E38D\_1\_201\_a**



CA4783F2-1BE5-46B6-9862-  
AC75F97017B6\_1\_201\_a



ABCB938D-E3A8-47C8-AC7D-  
6D14828B5349\_1\_201\_a



8A72B68E-6E04-4253-87E7-  
CFC860A91831\_1\_201\_a



1305BCE8-7113-4EBE-93C2-  
94CDC59A31A2\_1\_201\_a



**C35E1727-7E07-41DB-AB57-  
80723F0F6914\_1\_201\_a**

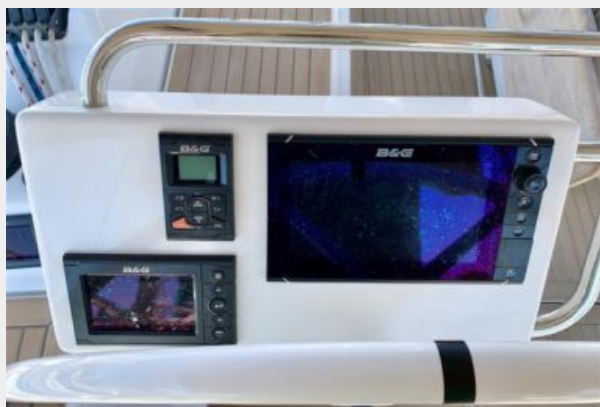


**9CCB6FDD-BB22-4B3E-88D5-  
C0329ACE21DF\_1\_201\_a**



**03B88260-E642-4E8E-8BBE-  
762C041102D1\_1\_201\_a**

**28B5FE37-6766-472F-B269-  
EABB5096FBEE\_1\_201\_a**



**387DFB45-19A6-4E2F-AC35-  
104FC0C5B2DA\_1\_201\_a**



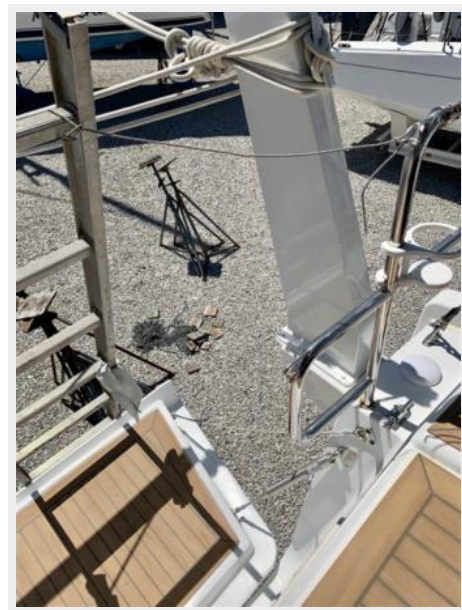
**D64C882E-BC55-405D-BCBD-  
8B12B3759E8E\_1\_201\_a**



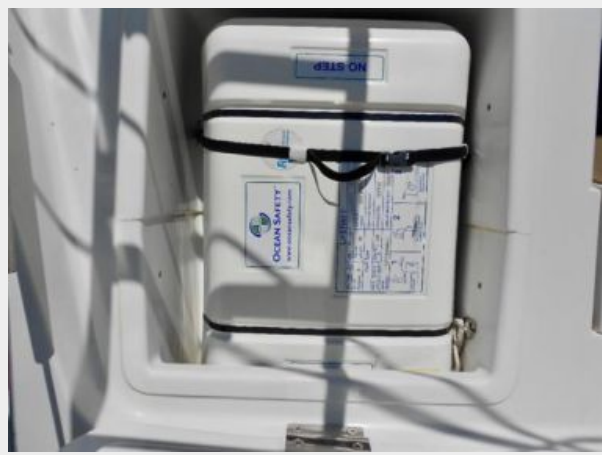
**C9CB9B42-C491-4A14-BA09-  
1F362D8BD604\_1\_201\_a**



**D56BCC65-96A2-40E6-ABCE-  
6751DCEF7629**



**FB95A4D5-6ADF-4041-9419-  
75196DAC8C59\_1\_201\_a**



**CC627186-BC9E-4C78-BF27-  
37EA6D0230A8\_1\_201\_a**



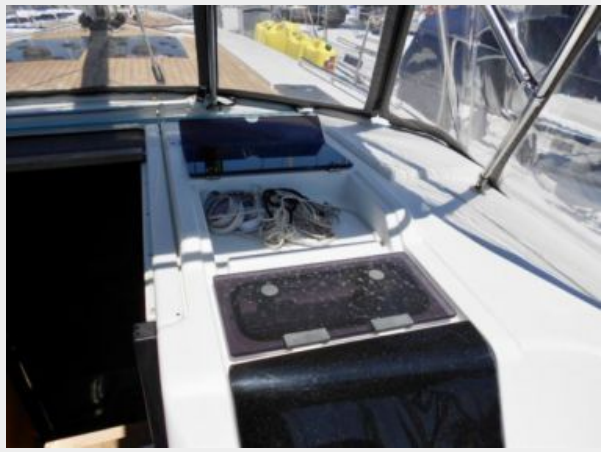
**46D15AAB-2781-4D38-AA54-  
4E3EAAF47CFF\_1\_201\_a**



**16406F2F-30F7-4594-89DA-  
269C1906CCF0\_1\_201\_a**



**3A8E242D-D9B1-413F-9F1D-0B1931CD1374\_1\_201\_a**



**AE8FA1D7-2F3A-4CB1-AB9E-BBA509C02FCB\_1\_201\_a**



**A718D234-91BF-4DB9-B4FA-B882856AC260\_1\_201\_a**



**F8DD77A5-8B60-45B5-A30A-DC7DDE08E5D9\_1\_201\_a**



**BBE82DA9-E26B-45F0-9B28-C9C651A72125\_1\_201\_a**



**C7CA403F-B0E4-4AF7-A880-FDDEA9DD4DC0\_1\_201\_a**



**FD5FC5D3-65F1-4B15-8535-  
F6613BD5AB9B**



**36D5422A-EBC6-478F-ACC2-  
33D88EF197F0\_1\_201\_a**



**F9DDB254-69A2-43B4-9163-  
E2230CF060B0\_1\_201\_a**



**AC5319FF-4752-4BDE-B746-  
ED98338237E9\_1\_201\_a**





**F38724EF-4695-411B-A817-  
2C9E5384B3C3\_1\_201\_a**



**4D5978BD-8F17-4705-BDC9-  
AA364D05309A\_1\_201\_a**



**BC18835F-7C97-4977-B97F-  
5A8FA9BB5BD0\_1\_201\_a**



**617BC260-FA00-4D19-AB4D-  
D30C95070010\_1\_201\_a**



**2D2EFDB4-0F63-45C6-A5D6-  
A13B747FADAF\_1\_201\_a**



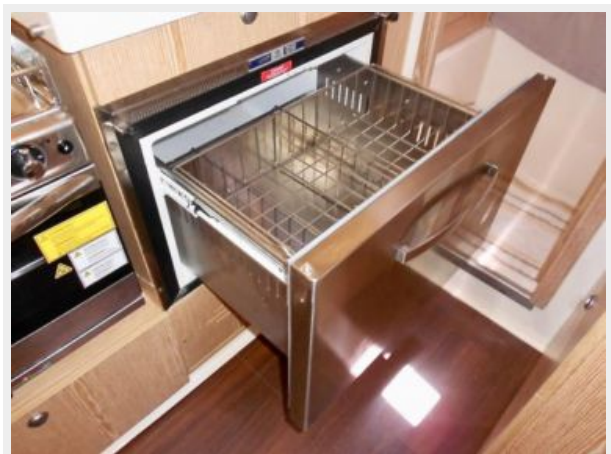
**B6FCA573-3231-4A9F-8446-  
A8A9565E1824\_1\_201\_a**



**54E023A9-589F-419D-9567-  
0FFDD9DB9B1E\_1\_201\_a**



**57E7D4E3-981D-4988-BC3F-  
318E27DF94F5\_1\_201\_a**



**F571752A-747B-44F7-93C3-  
E58F65816F30\_1\_201\_a**



**90232F12-023D-4C76-82FB-  
7023A77E9BFA\_1\_201\_a**



**E3DCB8EA-9585-40DB-A189-  
148885B2FF37\_1\_201\_a**



**8E23C83B-4752-4EB2-A8C5-  
8F8D739D04FB\_1\_201\_a**



**E05ED37C-5106-427D-AC0A-  
FE4512F4BF6E\_1\_201\_a**



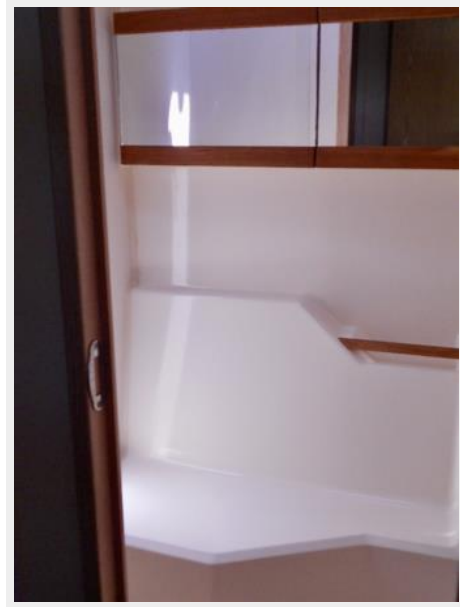
**0AD45573-7391-40E3-B7C5-  
066BC114D6D1\_1\_201\_a**



2457E58A-11B0-4906-83C5-  
38442E613CC4\_1\_201\_a



6763FC3B-B855-4B01-A81D-  
7CA55DC62E71\_1\_201\_a



7DB364E9-D422-4CBF-B23C-  
C258CF2D2A6C\_1\_201\_a



F11FEC83-B491-4B33-B0BE-  
2ECF96817C12\_1\_201\_a



E4AFA228-330F-4EDC-8D19-  
670E1C1A1C62\_1\_201\_a



E9E4A827-67EB-4158-B104-  
8CE8B9862D07\_1\_201\_a



1D440108-D95B-4379-B71C-  
65F8E5D05AC2\_1\_201\_a



2F3FDD5E-E627-44D4-8168-  
BA1C79E872FE\_1\_201\_a



30027DE1-AC8E-4129-B666-5D89CEB061F6\_1\_201\_a



BE659DAC-77F2-41D2-BEB0-A2D7264D872E\_1\_201\_a



D3E11370-37F3-4BEC-982D-9B10D73A399F\_1\_201\_a



723471B6-713E-4EC6-AB5C-DCFC06432F24\_1\_201\_a



8CA81932-9C78-4F50-B6D7-  
BB3BD74D8E0D\_1\_201\_a



40704AA9-8E87-4D91-A309-  
33B2B520853C\_1\_201\_a



9A525D27-BE84-45DE-8392-  
CA439E1310D9\_1\_201\_a



66919942-A988-4120-AE5D-  
CCA7983D1989\_1\_201\_a



EBA8917B-81A1-4E02-A025-  
23D15F2F8BF8\_1\_201\_a



11A2DB23-4E01-41E2-98EB-93C53A285FC9



CPYB Logo



Hanse 2015 455 A1\_B1\_C2 Interior Design



Hanse\_455\_Deckplan\_0614-3bc5e





# CONTACTS

---

Andrey Shestakov, leading yacht broker of the sales department of Shestakov Yacht Sales Inc. Shestakov Yacht Sales Inc., the official representative of the Miami/Fort Lauderdale FL headquarters.

## Contact details

---

Email: [andrey@shestakovyachtsales.com](mailto:andrey@shestakovyachtsales.com)

Web: [shestakovyachtsales.com/en/](http://shestakovyachtsales.com/en/)

## Telephones

---

USA: +1(954)274-4435

## Office hours

---

Monday – Saturday: **9:00 - 21:00** EDT

Sunday: **closed**

## Address

---



Harbour Towne Marina, 850 NE 3rd St,  
STE 213, Dania, FL 33004