

OMEGA — HATTERAS



Builder: HATTERAS

Year Built: 1981

Model: Motor Yacht

Price: PRICE ON APPLICATION

Location: United States

LOA: 53' 1" (16.18m)

Beam: 15' 10" (4.83m)

Min Draft: 4' 0" (1.22m)

Cruise Speed: 15 Kts. (17 MPH)

Max Speed: 17 Kts. (20 MPH)

Our experienced yacht broker, Andrey Shestakov, will help you choose and buy a yacht that best suits your needs **Omega — HATTERAS** from our catalogue. Presently, at Shestakov Yacht Sales Inc., we have a wide variety of yachts available on our sale's list. We also work in close contact with all the big yacht manufacturers from all over the world.

If you would like to buy a yacht **Omega — HATTERAS** or would like help answering any questions concerning purchasing, selling or chartering a yacht, please call **+1(954)274-4435**

TABLE OF CONTENTS

TABLE OF CONTENTS	2
SPECIFICATIONS	4
Overview	4
Basic Information	4
Dimensions	4
Speed, Capacities and Weight	4
Accommodations	5
Hull and Deck Information	5
Engine Information	5
DETAILED INFORMATION	6
Overview	6
Exclusions	9
Disclaimer	9
PHOTOS	10
2	10
3	10
4	10
5	10
6	10
7	10
8	11
9	11
10	11
11	11
12	11
13	11
14	12
15	12

16	12
17	12
18	12
19	12
20	13
21	13
22	13
23	13
25	13
24	13
CONTACTS	14
Contact details	14
Telephones	14
Office hours	14
Address	14

SPECIFICATIONS

Overview

New to the Market September 2020. The 53 Hatteras Motor Yacht has a following for a reason...their unmatched build quality, sensible layout, forgiving handling characteristics and just plain good looks. Equipped with Naiad Stabilizers, OMEGA gives a phenomenal ride in most any condition.

- Teak and Holly Soles throughout
- Stabilized
- Diesel Heat - perfect for cold weather comfort

The current owner is retired and enjoyed her as a live-aboard during the past three years. After moving back ashore, OMEGA is now on the market and available for her next owner!

Basic Information

Category: Motor Yacht

Model Year: 1981

Year Built: 1981

Country: United States

Vessel Top: Bimini Top

Fly Bridge: Yes

Dimensions

LOA: 53' 1" (16.18m)

LWL: 47' 3" (14.40m)

Beam: 15' 10" (4.83m)

Min Draft: 4' 0" (1.22m)

Speed, Capacities and Weight

Cruise Speed: 15 Kts. (17 MPH)

Max Speed: 17 Kts. (20 MPH)

Displacement: 55000 Pounds

Water Capacity: 245 Gallons

Fuel Capacity: 700 Gallons

Accommodations

Total Cabins: 3

Total Berths: 5

Sleeps: 6

Total Heads: 3

Hull and Deck Information

Hull Material: Fiberglass

Deck Material: Fiberglass

Hull Configuration: Modified V-Hull

Hull Color: White

Hull Finish: Fiberglass

Engine Information

Engines: 2

Manufacturer: Detroit Diesel

Model: 8V71 TI / 7082-3300

Engine Type: Inboard

Fuel Type: Diesel

DETAILED INFORMATION

Overview

Vessel Walkthrough

Stepping aboard the 53 Hatteras Motor Yacht OMEGA, you find it is very easy to move around the entire vessel via her generous side decks. Going forward is a large cushioned bench with backrest as well as two large dunnage boxes that are commonly used as bow seating.

The aft deck is fully enclosed (2016). To port is an icemaker and wet bar, while to starboard is the ladder to the flybridge. Double teak doors open to the salon.

Beautiful Teak and Holly varnished soles were installed. The salon is tastefully done with Wood Levelor Blinds, neutral couch and wooden end tables. The custom teak Entertainment center is built into the back of the helm bench seat.

Just forward is the lower helm with both port and starboard side deck doors. Custom double helm bench with a folding foot, storage underneath and, as mentioned before, entertainment cabinet in the back. All the controls and electronics are within easy reach of helmsman and navigator. Teak and holly are installed in this area.

Going below finds the dinette to starboard and the full service galley on the port side.

Forward is the guest cabin with 2 over/under bunks, plenty of storage, and head with stall shower. The washer and dryer is located in the forward cabin.

Aft of the galley takes you between the split engine rooms and to the mid guest cabin, featuring side by side twin berths with plenty of storage as well. Just across the hall is another guest head with stall shower.

Aft is the master cabin with its own en-suite head and stall shower. Also featuring a large island queen bed, more Levelor wood blinds, and huge closet. A well-lit vanity is to port.

Electronics and Navigation

OMEGA is outfitted with Furuno NAVnet vx2 units at both the upper and lower helms.

- Furuno NAVnet vx2 all-in-one plotter/radar/sounder - c-map NT MAX
- VHF Radio - Standard Horizon Intrepid +
- Autopilot - Simrad AP26
- Load Hailer with auto signaling - Standard Horizon
- Depth - 2016

Galley

The fully equipped galley is located a few steps down and forward of the lower helm station. The solid surface counters and teak and holly flooring are tasteful. Plenty of cabinetry.

- Solid surface dark counters with built in white sink.
- 4 burner electric cooktop
- Dishwasher
- Oven (eye level)

- Microwave
- Full size refrigerator
- Teak and holly flooring

Deck and Hull

- Windlass
- Chain to nylon anchor rode
- Twin bow dunnage boxes
- Bow Seating
- Matching black helm and bridge seating canvas

Mechanical and Electrical

- Twin 435 hp 8V71 TI Detroit diesels (1681 hours)
- Generator - Onan (3312 hours)
- NAIAD Stabilizers
- Diesel fired heater - Eberspacher D 12 L
- Raritan water heater
- Stainless domestic water pump
- Sentry 32 volt Charger, 30 amps
- Racor - Fuel/Water separators
- 50 amp shore service
- Rudder hardware replaced winter 2016 as general maintenance item

Exclusions

Owner's personal belongings.

Disclaimer

The Company offers the details of this vessel or yacht in good faith but cannot guarantee or warrant the accuracy of this information nor warrant the condition of the vessel. A buyer should instruct his representatives, agents, or his surveyors, to investigate such details as the buyer desires validated. This vessel or yacht is offered subject to prior sale, price change, or withdrawal without notice.

PHOTOS

2



3



4



5



6



7



8



9



10



11



12



13



14



15



16



17



18



19



20



21



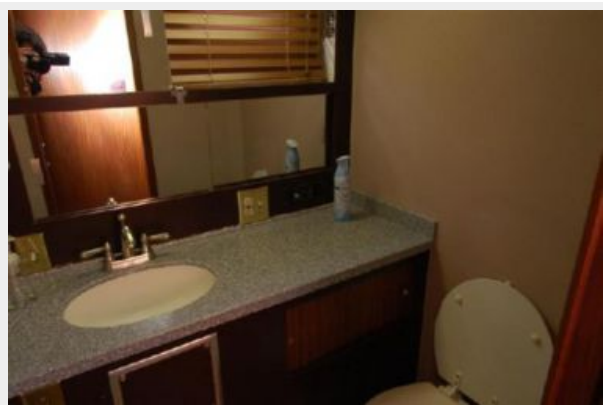
22



23



24



25



CONTACTS

Andrey Shestakov, leading yacht broker of the sales department of Shestakov Yacht Sales Inc. Shestakov Yacht Sales Inc., the official representative of the Miami/Fort Lauderdale FL headquarters.

Contact details

Email: andrey@shestakovyachtsales.com

Web: shestakovyachtsales.com/en/

Telephones

USA: +1(954)274-4435

Office hours

Monday – Saturday: **9:00 - 21:00** EDT

Sunday: **closed**

Address



Harbour Towne Marina, 850 NE 3rd St,
STE 213, Dania, FL 33004