

2007 JEANNEAU SUN ODYSSEY 54 — JEANNEAU



Судостроитель: JEANNEAU

Год постройки: 2007

Модель: Представительская парусная яхта

Цена: ЦЕНА ЯХТЫ ПО ЗАПРОСУ

Местонахождение: United States

Длина общая: 54' 11" (16.74m)

Ширина: 15' 11" (4.85m)

Макс. осадка: 7' 6" (2.29m)

Купить 2007 Jeanneau Sun Odyssey 54 — JEANNEAU а также выбрать подходящую вам яхту из нашего каталога яхт вам поможет опытный яхтенный брокер Андрей Шестаков. На сегодняшний день компания Shestakov Yacht Sales Inc. имеет большое количество яхт в собственном списке продаж, а также тесно сотрудничает со всеми крупными яхтенными производителями по всему миру. Для того чтобы купить яхту 2007 Jeanneau Sun Odyssey 54 — JEANNEAU а также проконсультироваться по любому вопросу связанному с покупкой, продажей, чартером яхт позвоните по телефону **+7(918)465-66-44**.

ОГЛАВЛЕНИЕ

ОГЛАВЛЕНИЕ	2
ХАРАКТЕРИСТИКИ	8
Обзор	8
Основная информация	10
Размеры	10
Скорость, вместимость и масса	10
Размещение	10
Корпус и палуба	11
Информация о двигателе	11
ПОДРОБНОЕ ОПИСАНИЕ	12
Overview	12
Исключения	23
Отказ от ответственности	24
ФОТОГРАФИИ	25
2	25
3	25
5	25
4	25
7	26
6	26
8	26
9	26
10	26
11	26
12	27
13	27
14	27
15	27

17	28
16	28
18	28
19	28
20	29
21	29
22	29
23	29
24	30
25	30
26	30
27	30
29	31
28	31
30	31
31	31
32	32
33	32
34	32
35	32
36	32
37	32
38	33
39	33
40	33
41	33
42	34
43	34
44	34

45	34
46	35
47	35
48	35
49	35
51	36
50	36
52	36
53	36
54	37
55	37
56	37
57	37
58	38
59	38
60	38
61	38
62	39
63	39
64	39
65	39
67	40
66	40
68	40
69	40
70	41
71	41
72	41
73	41

74	42
75	42
76	42
77	42
78	43
79	43
80	43
81	43
83	44
82	44
84	44
85	44
86	45
87	45
88	45
89	45
90	46
91	46
92	46
93	46
94	47
95	47
96	47
97	47
98	48
99	48
100	48
101	48
102	49

103	49
104	49
105	49
106	50
107	50
108	50
109	50
110	51
111	51
112	51
113	51
114	52
115	52
116	52
117	52
118	53
119	53
120	53
121	53
122	54
123	54
124	54
125	54
126	55
127	55
128	55
129	55
130	56
131	56

132	56
133	56
134	57
135	57
136	57
КОНТАКТЫ	58
Контактная информация	58
Телефоны	58
Время работы	58
Адрес	58

ХАРАКТЕРИСТИКИ

Обзор

The Jeanneau 54DS was specifically designed to be an elegant performance cruiser which defined the modern deck saloon. Gaze into her wake, and this yacht reveals the power of her seafaring hull from the comfort of a cleverly designed cockpit above vast accommodations. Marketed as guaranteeing sailing pleasure owing to her quality deck hardware and high-performance equipment, the ease of movement in the cockpit with centrally located deck hardware creates a fast, efficient, performance yacht which is a joy to sail. Cruising World described the boat as having: "the curvaceous deck lines of a sexy Italian motor-yacht with the long waterline and slippery underbody of an offshore thoroughbred". Indy is a clear testament to the designer's objectives, and a rare find as she HAS NEVER BEEN CHARTERED! Indy's equipment list is vast, and she has been prepped and her systems maintained for worldwide circumnavigation sailing. Her current owner, an engineer and very experienced sailor has outfitted the boat with precision for worldwide liveaboard long term cruising. At the bow, she hosts a 40kg Rocna anchor & 250ft of chain, and LED navigation lights. The forestay was REPLACED 18 MONTHS AGO, she has had new D2s within the last 18 months, and a recent great rigging check. Indy features the Skipper's Cabin layout at the bow, which includes separate accommodations including berth, head, sink, and storage. Stored up front is a 10ft Zodiac inflatable dinghy with pump, foresail, and fishing equipment including a speargun. On deck, sunpad cushions in Navy allow for a luxurious sun lounging space. A removable spinnaker pole is stored on the mast, which doubles to pole out the genoa for idea wing on wing passagemaking. Indy hosts two spinnaker halyards to provide a complete sail plan. The main winches are electric Harken 46s with complimentary winch covers. A further two winches are mounted on the coachroof, one of which is also electric. Twin leather-wrapped helms, with matching wheel covers, provide for a clear thoroughfare through to the stepped transom, which is ideal for swimming. At the stern, a hydraulic passerelle provides ideal egress when mooring stern-to. The helmsman is aided by a 24volt BOW THRUSTER. Indy's navigation includes THREE INDEPENDENT GPS systems and AIS. Comfort on deck is abundant with a full cushion package including cockpit cushions and backrests, ambient lighting in the cockpit, NEW BIMINI AND SPRAYHOOD IN 2019, sunshades for the canvas package, bug screens for the enclosure. and an under bimini light. The collapsible teak cockpit table provides for excellent outdoor living. The vast lazarettes house numerous lines and warps, hoses, fenders, a spare Danforth 25kg anchor, a spare CQR 65lb anchor, and a 4 stroke Suzuki 2.5hp outboard less than 1 year old. Additional supplies include jerry cans, numerous spares, and a separate water filter which can be attached to the tanks to filter water at source. A separate dedicated liferaft locker houses a Transocean 6 person liferaft (ISO 9650) which is in date. A second 6 man life raft is stored below deck (also in date). Propane is housed in a separate dedicated locker in the cockpit. A direct dock waterfeed is found on the starboard side near the wheel. Additional power is gained from 3 x SOLAR PANELS (2 x 100s and 1 x 150) securely mounted at the stern. The solar panels are

sufficient to power the lights and fridges at anchor. The hull itself is solid hand-laid fiberglass; it and the keel structure are supported by fiberglass over wood floors and stringers, which create a rugged internal framework. These individual floors are laminated directly to the hull, as are the primary bulkheads and the furniture facings, producing a rigid structure that can take a pounding. This time-consuming stiffening technique is in contrast to those that use molded hull liners. Indy benefits from fresh antifoul / bottom paint in January 2020, having just spend 6 months on the hard during hurricane season. a NEW maxi prop feathering propeller was fitted in 2018, and a spare prop is stored onboard. Below deck, the hull volume easily accommodates any longer distance cruiser's system demands and cruising payloads. Indy's layout includes a sumptuous Owner's Cabin forward with bed inserts to extend the length (if needed!), vast under berth storage, a vanity & powder mirror, separate full length mirror, a hidden dometic safe, closet and bedside lockers, fans, dedicated owner's cabin Sony stereo, 12 v / USB outlet, and separate Owner's Cabin air conditioner with new controllers and pumps. Ambient lighting creates a tranquil mood. The mast is separately boxed and out of sight down below. The front HEAD IS ELECTRIC and there is a COMPLETE SPARE ELECTRIC UNIT. The Owner's en-suite has new mirrors, a thermostatic shower in a separate cubicle, and vanity storage. Moving aft, significant storage is below the boards, and Indy houses a huge compliment of boat tools and spares in dedicated spaces including, for example, complete spare electric head parts, vacuum, drill, socket sets etc. Accommodation in the saloon is made for serious entertaining and living. Overly generous headroom, and panoramic port lights create a bright, light, modern, and sophisticated feel. The port side features separate cocktail seats / armchairs with a drinks and snacks cabinet, and a dedicated Sony stereo which is also linked to the cockpit speakers. TWO A/C CONTROLLERS FOR PORT & STARBOARD. A TV & DVD player is mounted in a separate locker. An overly generous saloon dining table incorporates movable / locking seats and ultra-comfortable seating with additional storage below and behind. All opening hatches onboard have separate bug screens. The galley features two fridges, once of which can be used as a fridge or freezer, a socket for a dedicated microwave space (not currently installed), 4 burner propane stove, grill, and oven with over the top counter, 240v extractor fan, double sink with splashback and separate seawater inlet. Additional plug in appliances include a toaster, kettle, and electric heater. The ONAN GENERATOR has only 507 HOURS. Easy access to the generator is found in the saloon. The chart table is a sailor's dream. A second Raymarine plotter provides for great navigational ease. Storage is abundant. A handheld pilot allows steerage from anywhere onboard. Within hand's reach is the 3Kw INVERTER, binoculars, ICOM HANDHELD VHF (NEW 2018), remote for the passerelle, SOLAR PANEL DISPLAY, SEPARATE BATTERY MONITOR, sextant, and more. Under the seat is a SEPARATE WASHER / DRYER (Thomson 5kg). Indy's engine (and all systems!) has been lovingly maintained. The engine looks super clean! A \$1400 engine service was performed in 2018, and a further engine and generator service was performed in July 2019 before Indy was placed on the hard (oil and filters replaced). All LARGE SEACOCKS REPLACED IN 2018 THROUGHOUT THE BOAT. Water storage is abundant with 3 tanks totaling 250 gallons in water. In addition, Indy houses a WATERMAKER WITH ONLY 20 HOURS' USE. 24v batteries are located under master bed for the windlass and bow thrusters (bow thruster batteries NEW IN 2019), another set of 24 v batteries is located under galley floor for the electric deck winches. The 12v house batteries located under the navigation station were NEW IN 2019. There is a separate 12v battery for

starting engine which was NEW 2018. Aft accommodations are designed for maximum options. Two double cabins can be interlinked by removing the dividing bulkhead, which is stored in a dedicated storage area underneath the forward berth. Both rear berths can be set up as twins or doubles, or a large cabin can be created with separate seating or storage area. A separate head and shower combination with head, dedicated shower, and new mirror compliment the accommodation for each aft cabin. NEW bedding in 2018. Safety equipment stored below includes 6 ARC approved fully automatic life jackets, one with AIS, and 4 spare automatic life jackets, NEW FLARES, and a NEW EPIRB IN 2019. Numerous pilot books and charts are ready for the long distance cruiser, including electronic and papers charts for the entire Mediterranean and pilot books plus Atlantic, Caribbean and East Coast USA. Overall, Indy is a (quite literally) proven winner for a worldwide adventurer. She has crossed oceans at ease, won cups (3rd in Class in Antigua Sailing Week 2019), won races, and participated in the ARC. She crossed the Atlantic in just 18 days. Her systems and setup are top notch. Where will she go next...? JEANNEAU SUN ODYSSEY 54 DS 2006 build, 2007 registered, British Registry.

Основная информация

Тип судна: Представительская парусная **Модельный год:** 2007
яхта

Год постройки: 2007

Страна: United States

Размеры

Длина общая: 54' 11" (16.74m)

Длина по ватерлинии: 48' 6" (14.78m)

Ширина: 15' 11" (4.85m)

Макс. осадка: 7' 6" (2.29m)

Скорость, вместимость и масса

Водоизмещение: 39584 Pounds

Вместимость воды: 246 Gallons

Объем топливного бака: 108 Gallons

Размещение

Всего кают: 4

Всего ком. состава: 3

Корпус и палуба

Материал корпуса: Fiberglass

Дизайнер корпуса: J.Fauroux / V.Garroni /
Jeanneau

Информация о двигателе

Двигатели: 1

Производитель: Yanmar

Модель: 4JH3 HTE

Тип двигателя: Inboard

Тип топлива: Diesel

ПОДРОБНОЕ ОПИСАНИЕ

Overview

Electronics

Depthsounder - Depth sounder/log 2 x Raymarine ST60 Tridata

Wind speed and direction - Windset Raymarine ST6

Repeater(s)

Navigation center - Navtex ICS 6

Plotter - Two additional chartplotters with charts Med and Carribean

Autopilot - Autopilot Raymarine ST600

Compass - Compass 2X Plastimo Olympic 135

GPS

VHF - VHF Raymarine 215E VHF handheld Icom IC-M 33

Radar - Radar Raymarine

Radar Detector - Radar/plotter Raymarine C120

TV set - Flatscreen on swing arm with DVD player

DVD player

Radio

CD player

Cockpit speakers

Sails

Furling mainsail

Genoa

Furling genoa – profurl

Rigging

Steering wheel

Electric winch - Genoa sheetwinches 2 x Harken 66 electric Halyard winches 2x harken 46 - 1 electric

Spinnaker pole

Inside Equipment

Bow thruster - Electric 2019

Electric bilge pump - 3

Manual bilge pump

Battery charger

Air conditioning

Heating

Hot water

Fresh water maker

Sea water pump

Washing machine

Oven - Cooker Eno 4 ring SS with oven Oven built in

Electric head

Refrigerator - Fridge front opening plus large top loaded freezer / fridge

Deep freezer

Electrical Equipment

Shore power inlet

Generator

Inverter

Outside Equipment/Extras

Teak cockpit

Teak sidedecks

Hydraulic gangway

Solar panel

Cockpit cushions

Cockpit table

Swimming ladder

Cockpit shower

Davits

Tender

Liferaft

Covers

Bimini Top

Genoa cover

Spray hood

2007 Jeanneau 54 DS

2007 Model

British registry SSR 170663

Type sailing yacht LOA (m)

16,75 LWL (m) 14,79

Beam (m) 4,87

Draft (m) 2,30

Air draft (m) 22,00

Headroom (m) 1,95

Year built 2006

Builder Jeanneau

Country France

Designer Fauroux & Garroni

Displacement (t) 23672

Gross tonnage 24055

Net tonnage 17572 CE norm

A Hull material GRP

Hull colour Dark Blue

Hull shape round-bilged

Deck finish teak

Superstructure deck finish non-skid moulded in

Cockpit deck finish teak

Antifouling (year) 2018

Dorades yes

Window frame aluminium

Fuel tank (litre) 410

Level indicator (fuel tank) yes

Freshwater tank3 total (litre) 970

Blackwater tank (litre) yes

Blackwater tank extraction yes

Wheel steering yes

Emergency tiller yes

ACCOMMODATION

Cabins 4

Berths 7

Crew cabin 1

Interior Teak finish silk Varnish

Floor teak and holly

Heating 4 Air-conditioning throughout

Chart table

Aft Cabin 2

Dining room 2

Dinette yes

Galley U shaped

Countertop Corian

Sink stainless steel double sink

Cooker Eno 4 ring SS with oven

Oven built in Extractor electro lux stainless steel

Fridge front opening plus large top loaded freezer / fridge

Hot water system yes

Water pressure system yes

Manual and/or foot pump seawater

Crockery yes

Owners cabin double bed

Bed length (m) 2

Wardrobe yes

Bathroom yes

Toilet system electric

Wash basin

Shower

Guest cabin 1

Bed length (m) 2

Wardrobe

Bathroom

Toilet system manual

Wash basin

Shower

Guest cabin 2

Bed length (m) 2

Wardrobe

Bathroom

Toilet system manual

Wash basin

Shower

Crew cabin(s) 1

Washing machine thomson toploaded

MACHINERY

No of engines 1

Make Yanmar

Type 4JH3 HTE

approx 1350 engine hours

HP 110,00

kW 80,85

Fuel diesel

Year installed 2006

Maximum speed (kn) 9

Cruising speed (kn) 7

Consumption (l/hr) 4

Engine cooling system

freshwater

heat exchanger

Drive shaft

Engine controls

morse cable

Gearbox Knazaki mech

Bowthruster electric 2019

Exhaust watercooled

Propeller type maxiprop feathering plus spare fixed Propeller

shaft material stainless steel

Shaft lubrication water

Manual bilge pump

Electric bilge pump 3

Bilge alarm

Generator Onan 7 KVA

Running hours generator 500

Start battery 55 Ah

Service battery 4x 80 Ah

new 2018 Generator battery 55 Ah

new 2018 Battery monitor

Battery charger

Christec Inverter

Diode battery combiners

Shorepower

Watermaker Dessalator 60l/h Duo D60 20hrs

350 watts solar panels and MPPT controller and battery monitor 2019

NAVIGATION

5Compass 2X Plastimo Olympic 135 Depth sounder/log 2 x Raymarine ST60 Tridata Windset
Raymarine ST6 VHF

Raymarine 215E

VHF handheld

Icom IC-M 33

Autopilot Raymarine ST600

Radar Raymarine

Radar/plotter Raymarine C120

Also two other chartplotters with charts Med and Caribbean

Navtex ICS 6

EQUIPMENT

Sprayhood with grab rail

new 2018 Bimini

new 2018 Cockpit cushions

Cockpit table

Bathing platform

Boarding ladder

Gangway Besenzoni Hydraulic Passarelle Anchor CQR 60 Lb plus Rocna 44kg

2019 Anchor chain 12mm

Galvanized 80 metres Anchor 2 Delta 25Kg

Windlass electrical

Lewmar Stainless steel Capstan

Sea railing

Pushpit

Pulpit

Life raft two 6 man one

new 2018 Lifejackets 8 Safety harness 8

6 Danbuoy

Horse shoe buoy with line

Fenders

yes

Mooring lines

yes

TV

Flatscreen on swing arm with DVD player

Radio-cd player Cockpit speakers

Sony yes

Speakers in salon Clock - barometer Fire extinguisher

yes yes in each cabin

RIGGING

Brand mast

Z- Diffusion

Material mast

aluminium

Mainsail

in mast furling

Stoway mast

yes

Genoa

yes

Genoa furler

profurl

Genoa cover

uv strip

Boomvang

aluminium z-diffusion

Genoa sheetwinches

2 x Harken 66 electric

Halyard winches

2x harken 46 - 1 electric

Winchcovers

Fresh bottom paint December 2019

Sail Area

I : 65.75 ft

J : 9.33 ft

P : 57.83 ft

E : 19.17 ft

Keel Details

Keel #1

Keel Type: Shoal_Draft

Ballast: 11905 lb

Max Draft: 6.50 ft

Manufacturer Provided Description

Sun Odyssey 54 DS : From the imaginary to the revolutionary !

Mast & Rigging

Keel-stepped mast, mast foot with shoe Triple spreaders, through-mast connection
Discontinuous cablerigging, lower forward shrouds Backstay double, double turnbuckles
Turnbuckle protectors on shrouds Profurl genoa furler, above-deck drum Rigid boom vang, all
halyards led to Spinlock blockers at cockpit Harken mast step blocks on deck fitting Watertight
mast passage deck fitting Stainless steel mast reinforcement rod between deck fitting and mast
foot Double thickness lower mast section, watertight. Removable mast casing for access to cable
connections Folding mast steps deck lighting under spreaders Spinnaker pole rail on front of
mast for pole storage (optional spinnaker pole) Boom topping lift, mainsail halyard, genoa
halyard, spinnaker halyard Flag halyard strap-eyes Standard : furling mast Horizontal cut Dacron
furling mainsail Horizontal cut Dacron genoa Option : classic mast : Full-batten cut triradial DC
77/99 polyester/mylar sandwich mains ail Triradial cut DC 77/99 polyester/mylar sandwich
mainsail genoa Harken system B mast track and battcars 2 automatic reefs, 3rd classic reef Lazy
bag, adjustable lazy jacks

Исключения

При продаже яхты исключаются личные вещи владельца.

Отказ от ответственности

Компания предоставляет описание судна или яхты добросовестно, но не может гарантировать точность этой информации, а также не ручается за техническое состояние. Покупатель должен проинструктировать своих агентов или оценщиков исследовать представленную информацию более подробно, по собственному желанию. Продажа судна или яхты, изменение цены или снятие с продажи будет происходить без предварительного уведомления.

ФОТОГРАФИИ

2



3



4



5



6



7



8



9



10



11



12



13



14



15



16



17



18



19



20



21



22



23



24



25



26



27



28



29



30



31



32



33



34



35



36



37



38



39



40



41



42



43



44



45



46



47



48



49



50



51



52



53



54



55



56



57



58



59



60



61



62



63



64



65



66



67



68



69



70



71



72



73



74



75



76



77



78



79



80



81



82



83



84



85



86



87



88



89



90



91



92



93



94



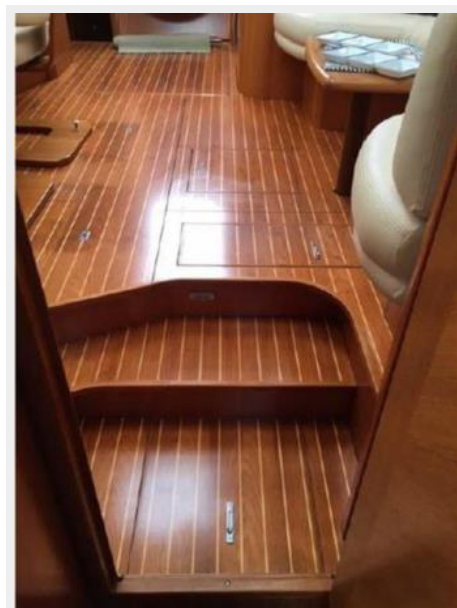
95



96



97



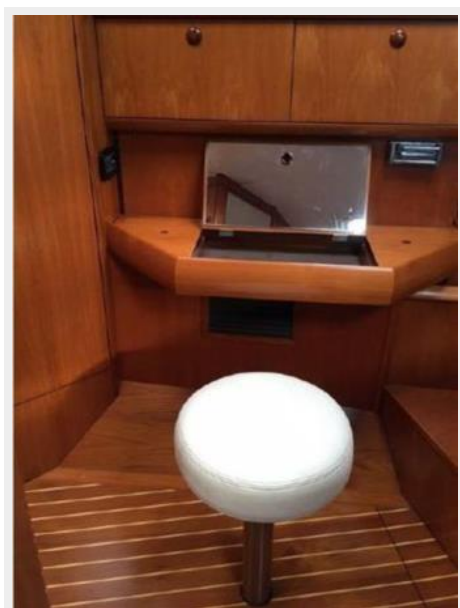
98



99



100



101



102



103



104



105



106



107



108



109



110



111



112



113



114



115



116



117



118



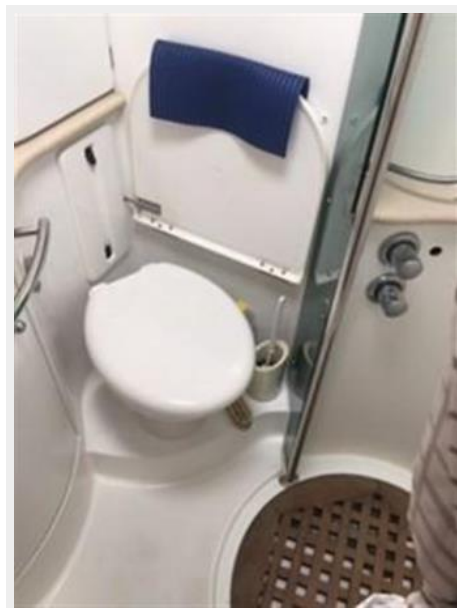
119



120



121



122



123



124



125



126



127



128



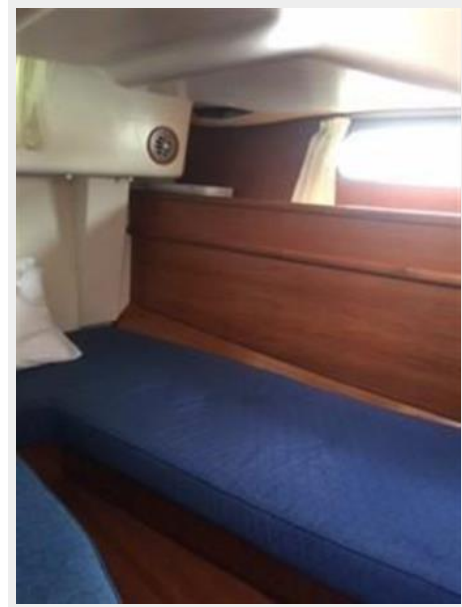
129



130



131



132



133



134



135



136



КОНТАКТЫ

Андрей Шестаков (Andrey Shestakov) – ведущий яхтенный брокер отдела продаж яхт и судов компании Shestakov Yacht Sales Inc. Официальный представитель Shestakov Yacht Sales Inc. для русскоговорящих клиентов в центральном офисе компании в Майами/Форт Лодердейл/Флорида/США.

Контактная информация

Email: andrey@shestakovyachtsales.com

Web: shestakovyachtsales.com

Телефоны

Краснодарский край: **+7(918)465-66-44**

США, Майами, Флорида: **+1(954)274-4435**

Время работы

Понедельник – Суббота: **9:00 - 21:00**
EDT

Воскресенье: **Закрито**

Адрес



Harbour Towne Marina, 850 NE 3rd St,
STE 213, Dania, FL 33004