

## NEXT WAVE — REGAL



**Builder:** REGAL

**Year Built:** 2007

**Model:** Motor Yacht

**Price:** PRICE ON APPLICATION

**Location:** United States

**LOA:** 40' 1" (12.22m)

**Beam:** 13' 0" (3.96m)

**Max Draft:** 3' 3" (0.99m)

**Cruise Speed:** 20 Kts. (23 MPH)

**Max Speed:** 28 Kts. (32 MPH)

Our experienced yacht broker, Andrey Shestakov, will help you choose and buy a yacht that best suits your needs **Next Wave — REGAL** from our catalogue. Presently, at Shestakov Yacht Sales Inc., we have a wide variety of yachts available on our sale's list. We also work in close contact with all the big yacht manufacturers from all over the world.

If you would like to buy a yacht **Next Wave — REGAL** or would like help answering any questions concerning purchasing, selling or chartering a yacht, please call **+1(954)274-4435**

# TABLE OF CONTENTS

TABLE OF CONTENTS	2
SPECIFICATIONS	4
Overview	4
Basic Information	4
Dimensions	4
Speed, Capacities and Weight	4
Accommodations	4
Hull and Deck Information	5
Engine Information	5
DETAILED INFORMATION	6
Salon	6
Galley	6
Master Stateroom	7
Master Head	7
Guest Stateroom	7
Guest Head	8
Helm	9
Cockpit	9
Mechanical	10
Hull and Deck	11
Tender	12
Exclusions	12
Exclusions	12
Disclaimer	12
PHOTOS	13
Starboard	13
Port Quarter	13
Bow	13

Bow	13
Cockpit	13
Helm	13
Salon	14
Galley	14
Master Head	14
Master Stateroom	14
Guest Head	14
Guest Stateroom	14
CONTACTS	15
Contact details	15
Telephones	15
Office hours	15
Address	15

# SPECIFICATIONS

## Overview

Get ready to catch the NEXT WAVE onboard this beautiful boat. She is in immaculate condition and ready to cruise the waterways of the PNW for years to come. You'll be impressed by the comfortable accommodations featuring two staterooms and two heads. The large cockpit, which can be enclosed, is well-suited for entertaining. Always moored in freshwater and equipped with twin diesel Volvo Penta engines there isn't anywhere you can't explore. Enjoyed by knowledgeable owners and maintained to the highest of standards, don't miss out on this excellent opportunity. Call today to schedule a showing!

## Basic Information

**Category:** Motor Yacht

**Model Year:** 2007

**Year Built:** 2007

**Country:** United States

## Dimensions

**LOA:** 40' 1" (12.22m)

**Beam:** 13' 0" (3.96m)

**Max Draft:** 3' 3" (0.99m)

**Clearance:** 10' 1" (3.07m)

## Speed, Capacities and Weight

**Cruise Speed:** 20 Kts. (23 MPH)

**Max Speed:** 28 Kts. (32 MPH)

**Displacement:** 18360 Pounds

**Water Capacity:** 75 Gallons

**Holding Tank:** 40 Gallons

**Fuel Capacity:** 277 Gallons

## Accommodations

**Total Cabins:** 2

**Total Berths:** 3

**Sleeps:** 4

**Total Heads:** 2

---

## Hull and Deck Information

---

**Hull Material:** FRP

**Hull Configuration:** Deep Vee

**Hull Finish:** Plastic

---

## Engine Information

---

**Engines:** 2

**Manufacturer:** Volvo Penta

**Model:** D-6

**Fuel Type:** Diesel

---

## DETAILED INFORMATION

---

### Salon

---

- AC/DC panel
- Cabinet doors positive locking
- Carbon monoxide detector
- Carpet deep pile
- Dinette table removable with designated storage
- Doors flush mount
- Entertainment center flat screen color TV, DVD/stereo and home theater surround
- sound system
- Hatch translucent, opening
- Lights indirect accent
- Lights individual chrome reading
- Lights overhead chrome with dimmer switches
- Outlet 120V GFIC protected
- Portlights (3) with designer blinds
- Receptacle 12V and USB
- Seating built-in recliner LeatherCrest® fabric
- Seating salon, converts to sleeper with LeatherCrest® fabric
- Steps hardwood, salon entry
- Storage glass and bottle
- Storage overhead with curved cabinet doors
- Vacuum system central

### Galley

---

- Countertop Corian®
- Dishware & flatware with designated storage
- Faucet chrome
- Flooring cherry and holly hardwood
- Hatch translucent, opening
- Lights chrome overhead
- Microwave stainless steel
- Outlet 120V GFIC protected
- Portlight with blinds
- Refrigerator/freezer (7.5 cu. ft.)
- Sink deep, polished stainless steel
- Storage drawer
- Storage plate and glass holder
- Storage upper and lower cabinet

- Storage utensil tray
- Stove electric 2 burner with hide-away Corian® cover
- Waste receptacle concealed

---

## Master Stateroom

---

- Berth innerspring mattress with custom comforter, designer pillows and sheets
- Bulkhead mirrored with reading lights
- Carbon monoxide detector
- Door privacy, doublewide sliding
- Door private head access
- Dressing area stand-up with privacy curtain and settee
- Hanging lockers (2) illuminated and cedar lined
- Hatch translucent, opening
- Lights indirect accent
- Lights overhead chrome
- Outlet 120V GFIC protected
- Portlights port and starboard with curtains
- Storage drawer
- Storage side shelf
- Storage under-berth
- TV 15" color flat screen with remote

---

## Master Head

---

- Faucet chrome
- Flooring tile-simulate, black
- Hair dryer
- Head full fiberglass compartment
- Lights overhead chrome
- Mirror full-length
- Outlet 120V GFIC protected
- Portlight with blinds
- Shower stall stand-up with settee and half-round acrylic shower door
- Showerhead chrome, hand-held with spiral hose
- Skylight overhead frosted
- Towel racks (2) stainless steel
- Vents air-conditioning and exhaust fan

---

## Guest Stateroom

---

- Berths (2) converts to queen berth with custom comforter, designer pillows and sheets
- Carbon monoxide detector
- Door doublewide sliding
- Door private access to head compartment
- Dressing area private stand-up
- Hanging locker illuminated and cedar lined
- Lights chrome reading
- Lights overhead chrome
- Outlet 120V GFIC protected
- Portlights with curtains, port and starboard
- Storage overhead vanity cabinet
- Storage under-berth
- TV color flatscreen with remote

## Guest Head

---

- Faucet chrome
- Flooring tile-simulate, black
- Head full fiberglass compartment
- Lights overhead chrome
- Mirror full-length
- Outlet 120V GFIC protected
- Portlight with blinds
- Showerhead chrome, hand-held with spiral hose
- Skylight overhead frosted
- Storage mirrored medicine cabinet
- Storage under vanity with toilet tissue holder
- Toilet tissue holder
- Toilet VacuFlush® with holding tank
- Towel racks (2) stainless steel
- Towels with embroidered Regal logo



- Vanity with molded sink
- Vents air-conditioning and exhaust fan

## Helm

---

- Bow Thruster controls
- Compass
- Controls twin shift/throttle
- Dash circuit breakers
- Dash non-glare
- Depth sounder Raymarine ST 60 digital
- Emergency start system battery parallel switch
- Instrumentation & switch panels burlwood
- Instrumentation Faria fog-free, backlit gauges include: speedometer, tachometer, hour meter, oil pressure, volt meter, trim, fuel and temperature
- Outlet 12V accessory
- Plotter Raymarine C80 GPS/chart
- Spotlight remote control
- Steering hydraulic and 5 position tilt
- Steering wheel wood with stereo controls
- Switches backlight and water resistant
- VHF Radio

## Cockpit

---

- Carpet removable
- Chart holder port dash
- Isotherm drawer fridge
- Door sliding cabin entry with handrail and screen
- Door starboard transom
- Drink holders stainless steel
- Engine hatch forward opening and electric actuated with gasket seal
- Engine hatch secondary access
- Fire extinguisher locker for quick access
- Lights courtesy
- Liner fiberglass and self-bailing
- Outlet 120V GFIC protected
- Refreshment center: with cutting board, refrigerator and tip-out trash receptacle
- Seating aft L-shaped
- Seating double helm with leaning post

- Seating forward, U-shaped with table and filler cushion
- Stereo AM/FM/CD player
- Storage user defined with cargo net dividers
- Upholstery UV/stain resistant marine grade with memory backing, French stitched
- Waste receptacle concealed with designated storage

## Mechanical

---

- Air conditioning with reverse heat (26,000 BTU's)
- Automatic bilge high water alarm
- Batteries engine (2) and house (1)
- Battery charger (60 amp)
- Battery isolator
- Battery switches (3) heavy-duty
- Bilge blower with sealed shaft
- Carbon monoxide detectors (3)
- Certifications meets applicable NMMA and USCG standards
- Cruise package includes fenders, dock lines, life vests, first aid kit, boat hook, and deck brush
- Electrical connectors heat shrunk
- Exhaust underwater (reduces noise, exhaust and vapors)
- Fire extinguisher automatic
- Fuel cross over selector valves (gas)
- Fuel tanks dual aluminum
- Fuel transfer switch (diesel)
- Galvanic isolator with test display panel
- Generator Kohler diesel, 8.5 kw (with diesel engine option)
- Generator Kohler gas EFI low CO emission, 7.3 kw
- Monitor fresh/waste water
- Outlets 120V GFCI protected
- Plumbing Sea Tech® connectors
- Pumps (2) automatic bilge
- Racor filters heat exchange, shut-off valves - diesel only
- Shaft seals dripless
- Shore cords 50 ft. dual 30-amp dockside
- Shower sump (2)
- Stereo remote dash mounted
- Strainers sea water
- Trim tabs hydraulic
- TV antenna & cable hook-up with telephone plug
- Underwater fittings stainless steel
- Underwater gear includes: engine sea water strainers, bronze alloy 4 blade props, bronze rudders

- and struts, stainless steel prop shafts with zincs, drip free no maintenance packing glands
- Water heater with heat exchanger (11 Gals.)
- Water inlet dockside
- Water system pressurized with whole boat filter
- Wiring connectors Mate-N-Lok II
- Wiring loomed and color coded
- Inverter 2000 watt

## Hull and Deck

---

- Anchor roller with stainless steel chain guard plate and deck accessed rode locker
- Anchor scuff plate stainless steel
- Anchor wash-down with hose and nozzle, foredeck
- Anchor windlass with rode and foot/dash actuators
- Anchor work area recessed at foredeck with integrated locker
- Barrier coat high performance vinylester resin (AME)
- Bottom paint
- Bow rail with foredeck safety rail 1 1/4" stainless steel (316 grade)
- Cleats (8) 10" stainless steel
- Deck fill plates stainless steel
- Engine compartment gelcoated and insulated
- Gelcoat in-mold classic, two boot stripe color choices
- Hand rails stainless steel
- Hardware deck, through-bolted stainless steel
- Hatches deck, translucent with screens
- Horn air, trumpet style
- Ladder stern, stainless steel telescoping
- Lights navigation
- Locker shore power
- Lockers (2) foredeck, fender
- OceanTrac® hull
- Portlight with screen, stainless steel
- Radar arch with overhead lighting and integrated speakers
- Rubrail dent resistant white vinyl with stainless steel insert
- Shower transom hot and cold
- Steps port and starboard foredeck access
- Storage cockpit seat
- Storage compartment with door, transom
- Stringer system fiberglass encapsulated
- Sunpad chaise lounge foredeck
- Swim platform extended fiberglass with stainless steel pull-up cleats (2) (for unimpeded entry with cross-tied lines)
- Transom handrail stainless steel

---

## Tender

---

- 10' 2" Walker Bay 270 SLR PVC 2015
- Honda 9.9 HP Outboard Motor
- Full Canvas Cover

---

## Exclusions

---

All personal property is excluded unless specifically identified and included in the sale agreement and listing specifications. Personal property refers to all items not permanently attached to the vessel including but not limited to artwork, furnishings, and recreational or entertainment items. Advertisements, marketing materials, and/or other photography may depict the vessel with personal property, however, such personal property is excluded unless otherwise specifically included as provided herein.

---

## Exclusions

---

Owner's personal belongings.

---

## Disclaimer

---

The Company offers the details of this vessel or yacht in good faith but cannot guarantee or warrant the accuracy of this information nor warrant the condition of the vessel. A buyer should instruct his representatives, agents, or his surveyors, to investigate such details as the buyer desires validated. This vessel or yacht is offered subject to prior sale, price change, or withdrawal without notice.

# PHOTOS

**Starboard**



**Port Quarter**



**Bow**



**Bow**



**Cockpit**



**Helm**



**Salon**



**Galley**



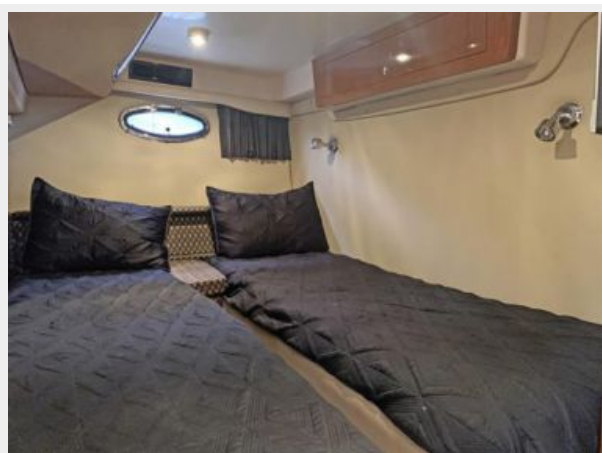
**Master Stateroom**



**Master Head**



**Guest Stateroom**



**Guest Head**



# CONTACTS

---

Andrey Shestakov, leading yacht broker of the sales department of Shestakov Yacht Sales Inc. Shestakov Yacht Sales Inc., the official representative of the Miami/Fort Lauderdale FL headquarters.

## Contact details

---

Email:  
**andrey@shestakovyachtsales.com**

Web: [shestakovyachtsales.com/en/](http://shestakovyachtsales.com/en/)

## Telephones

---

USA: **+1(954)274-4435**

## Office hours

---

Monday – Saturday: **9:00 - 21:00 EDT**

Sunday: **closed**

## Address

---



Harbour Towne Marina, 850 NE 3rd St,  
STE 213, Dania, FL 33004