

NEXT WAVE — REGAL



Судостроитель: REGAL

Год постройки: 2007

Модель: Моторная яхта

Цена: **ЦЕНА ЯХТЫ ПО ЗАПРОСУ**

Местонахождение: United States

Длина общая: 40' 1" (12.22m)

Ширина: 13' 0" (3.96m)

Макс. осадка: 3' 3" (0.99m)

Крейс. скорость: 20 Kts. (23 MPH)

Макс. скорость: 28 Kts. (32 MPH)

Купить **Next Wave — REGAL** а также выбрать подходящую вам яхту из нашего **каталога яхт** вам поможет опытный яхтенный брокер Андрей Шестаков. На сегодняшний день компания **Shestakov Yacht Sales Inc.** имеет большое количество яхт в **собственном списке продаж**, а также тесно сотрудничает со всеми крупными яхтенными производителями по всему миру.

Для того чтобы купить яхту **Next Wave — REGAL** а также проконсультироваться по любому вопросу связанному с покупкой, продажей, чартером яхт позвоните по телефону **+7(918)465-66-44**.

ОГЛАВЛЕНИЕ

ОГЛАВЛЕНИЕ	2
ХАРАКТЕРИСТИКИ	4
Обзор	4
Основная информация	4
Размеры	4
Скорость, вместимость и масса	4
Размещение	4
Корпус и палуба	5
Информация о двигателе	5
ПОДРОБНОЕ ОПИСАНИЕ	6
Salon	6
Galley	6
Master Stateroom	7
Master Head	7
Guest Stateroom	7
Guest Head	8
Helm	9
Cockpit	9
Mechanical	10
Hull and Deck	11
Tender	12
Exclusions	12
Исключения	12
Отказ от ответственности	12
ФОТОГРАФИИ	13
Starboard	13
Port Quarter	13
Bow	13

Bow	13
Cockpit	13
Helm	13
Salon	14
Galley	14
Master Head	14
Master Stateroom	14
Guest Head	14
Guest Stateroom	14
КОНТАКТЫ	15
Контактная информация	15
Телефоны	15
Время работы	15
Адрес	15

ХАРАКТЕРИСТИКИ

Обзор

Get ready to catch the NEXT WAVE onboard this beautiful boat. She is in immaculate condition and ready to cruise the waterways of the PNW for years to come. You'll be impressed by the comfortable accommodations featuring two staterooms and two heads. The large cockpit, which can be enclosed, is well-suited for entertaining. Always moored in freshwater and equipped with twin diesel Volvo Penta engines there isn't anywhere you can't explore. Enjoyed by knowledgeable owners and maintained to the highest of standards, don't miss out on this excellent opportunity. Call today to schedule a showing!

Основная информация

Тип судна: Моторная яхта

Модельный год: 2007

Год постройки: 2007

Страна: United States

Размеры

Длина общая: 40' 1" (12.22m)

Ширина: 13' 0" (3.96m)

Макс. осадка: 3' 3" (0.99m)

Трапы: 10' 1" (3.07m)

Скорость, вместимость и масса

Крейс. скорость: 20 Kts. (23 MPH)

Макс. скорость: 28 Kts. (32 MPH)

Водоизмещение: 18360 Pounds

Вместимость воды: 75 Gallons

Вместимость сточного бака: 40 Gallons

Объем топливного бака: 277 Gallons

Размещение

Всего кают: 2

Всего коек: 3

Спальные места: 4

Всего ком. состава: 2

Корпус и палуба

Материал корпуса: FRP

Комплектация корпуса: Deep Vee

Отделка корпуса: Plastic

Информация о двигателе

Двигатели: 2

Производитель: Volvo Penta

Модель: D-6

Тип топлива: Diesel

ПОДРОБНОЕ ОПИСАНИЕ

Salon

- AC/DC panel
- Cabinet doors positive locking
- Carbon monoxide detector
- Carpet deep pile
- Dinette table removable with designated storage
- Doors flush mount
- Entertainment center flat screen color TV, DVD/stereo and home theater surround
- sound system
- Hatch translucent, opening
- Lights indirect accent
- Lights individual chrome reading
- Lights overhead chrome with dimmer switches
- Outlet 120V GFIC protected
- Portlights (3) with designer blinds
- Receptacle 12V and USB
- Seating built-in recliner LeatherCrest® fabric
- Seating salon, converts to sleeper with LeatherCrest® fabric
- Steps hardwood, salon entry
- Storage glass and bottle
- Storage overhead with curved cabinet doors
- Vacuum system central

Galley

- Countertop Corian®
- Dishware & flatware with designated storage
- Faucet chrome
- Flooring cherry and holly hardwood
- Hatch translucent, opening
- Lights chrome overhead
- Microwave stainless steel
- Outlet 120V GFIC protected
- Portlight with blinds
- Refrigerator/freezer (7.5 cu. ft.)
- Sink deep, polished stainless steel
- Storage drawer
- Storage plate and glass holder
- Storage upper and lower cabinet

- Storage utensil tray
- Stove electric 2 burner with hide-away Corian® cover
- Waste receptacle concealed

Master Stateroom

- Berth innerspring mattress with custom comforter, designer pillows and sheets
- Bulkhead mirrored with reading lights
- Carbon monoxide detector
- Door privacy, doublewide sliding
- Door private head access
- Dressing area stand-up with privacy curtain and settee
- Hanging lockers (2) illuminated and cedar lined
- Hatch translucent, opening
- Lights indirect accent
- Lights overhead chrome
- Outlet 120V GFIC protected
- Portlights port and starboard with curtains
- Storage drawer
- Storage side shelf
- Storage under-berth
- TV 15" color flat screen with remote

Master Head

- Faucet chrome
- Flooring tile-simulate, black
- Hair dryer
- Head full fiberglass compartment
- Lights overhead chrome
- Mirror full-length
- Outlet 120V GFIC protected
- Portlight with blinds
- Shower stall stand-up with settee and half-round acrylic shower door
- Showerhead chrome, hand-held with spiral hose
- Skylight overhead frosted
- Towel racks (2) stainless steel
- Vents air-conditioning and exhaust fan

Guest Stateroom

- Berths (2) converts to queen berth with custom comforter, designer pillows and sheets
- Carbon monoxide detector
- Door doublewide sliding
- Door private access to head compartment
- Dressing area private stand-up
- Hanging locker illuminated and cedar lined
- Lights chrome reading
- Lights overhead chrome
- Outlet 120V GFIC protected
- Portlights with curtains, port and starboard
- Storage overhead vanity cabinet
- Storage under-berth
- TV color flatscreen with remote

Guest Head

- Faucet chrome
- Flooring tile-simulate, black
- Head full fiberglass compartment
- Lights overhead chrome
- Mirror full-length
- Outlet 120V GFIC protected
- Portlight with blinds
- Showerhead chrome, hand-held with spiral hose
- Skylight overhead frosted
- Storage mirrored medicine cabinet
- Storage under vanity with toilet tissue holder
- Toilet tissue holder
- Toilet VacuFlush® with holding tank
- Towel racks (2) stainless steel
- Towels with embroidered Regal logo

- Vanity with molded sink
- Vents air-conditioning and exhaust fan

Helm

- Bow Thruster controls
- Compass
- Controls twin shift/throttle
- Dash circuit breakers
- Dash non-glare
- Depth sounder Raymarine ST 60 digital
- Emergency start system battery parallel switch
- Instrumentation & switch panels burlwood
- Instrumentation Faria fog-free, backlit gauges include: speedometer, tachometer, hour meter, oil
- pressure, volt meter, trim, fuel and temperature
- Outlet 12V accessory
- Plotter Raymarine C80 GPS/chart
- Spotlight remote control
- Steering hydraulic and 5 position tilt
- Steering wheel wood with stereo controls
- Switches backlight and water resistant
- VHF Radio

Cockpit

- Carpet removable
- Chart holder port dash
- Isotherm drawer fridge
- Door sliding cabin entry with handrail and screen
- Door starboard transom
- Drink holders stainless steel
- Engine hatch forward opening and electric actuated with gasket seal
- Engine hatch secondary access
- Fire extinguisher locker for quick access
- Lights courtesy
- Liner fiberglass and self-bailing
- Outlet 120V GFIC protected
- Refreshment center: with cutting board, refrigerator and tip-out trash receptacle
- Seating aft L-shaped
- Seating double helm with leaning post

- Seating forward, U-shaped with table and filler cushion
- Stereo AM/FM/CD player
- Storage user defined with cargo net dividers
- Upholstery UV/stain resistant marine grade with memory backing, French stitched
- Waste receptacle concealed with designated storage

Mechanical

- Air conditioning with reverse heat (26,000 BTU's)
- Automatic bilge high water alarm
- Batteries engine (2) and house (1)
- Battery charger (60 amp)
- Battery isolator
- Battery switches (3) heavy-duty
- Bilge blower with sealed shaft
- Carbon monoxide detectors (3)
- Certifications meets applicable NMMA and USCG standards
- Cruise package includes fenders, dock lines, life vests, first aid kit, boat hook, and deck brush
- Electrical connectors heat shrunk
- Exhaust underwater (reduces noise, exhaust and vapors)
- Fire extinguisher automatic
- Fuel cross over selector valves (gas)
- Fuel tanks dual aluminum
- Fuel transfer switch (diesel)
- Galvanic isolator with test display panel
- Generator Kohler diesel, 8.5 kw (with diesel engine option)
- Generator Kohler gas EFI low CO emission, 7.3 kw
- Monitor fresh/waste water
- Outlets 120V GFCI protected
- Plumbing Sea Tech® connectors
- Pumps (2) automatic bilge
- Racor filters heat exchange, shut-off valves - diesel only
- Shaft seals dripless
- Shore cords 50 ft. dual 30-amp dockside
- Shower sump (2)
- Stereo remote dash mounted
- Strainers sea water
- Trim tabs hydraulic
- TV antenna & cable hook-up with telephone plug
- Underwater fittings stainless steel
- Underwater gear includes: engine sea water strainers, bronze alloy 4 blade props, bronze rudders

- and struts, stainless steel prop shafts with zincs, drip free no maintenance packing glands
- Water heater with heat exchanger (11 Gals.)
- Water inlet dockside
- Water system pressurized with whole boat filter
- Wiring connectors Mate-N-Lok II
- Wiring loomed and color coded
- Inverter 2000 watt

Hull and Deck

- Anchor roller with stainless steel chain guard plate and deck accessed rode locker
- Anchor scuff plate stainless steel
- Anchor wash-down with hose and nozzle, foredeck
- Anchor windlass with rode and foot/dash actuators
- Anchor work area recessed at foredeck with integrated locker
- Barrier coat high performance vinylester resin (AME)
- Bottom paint
- Bow rail with foredeck safety rail 1 1/4" stainless steel (316 grade)
- Cleats (8) 10" stainless steel
- Deck fill plates stainless steel
- Engine compartment gelcoated and insulated
- Gelcoat in-mold classic, two boot stripe color choices
- Hand rails stainless steel
- Hardware deck, through-bolted stainless steel
- Hatches deck, translucent with screens
- Horn air, trumpet style
- Ladder stern, stainless steel telescoping
- Lights navigation
- Locker shore power
- Lockers (2) foredeck, fender
- OceanTrac® hull
- Portlight with screen, stainless steel
- Radar arch with overhead lighting and integrated speakers
- Rubrail dent resistant white vinyl with stainless steel insert
- Shower transom hot and cold
- Steps port and starboard foredeck access
- Storage cockpit seat
- Storage compartment with door, transom
- Stringer system fiberglass encapsulated
- Sunpad chaise lounge foredeck
- Swim platform extended fiberglass with stainless steel pull-up cleats (2) (for unimpeded entry with cross-tied lines)
- Transom handrail stainless steel

Tender

- 10' 2" Walker Bay 270 SLR PVC 2015
- Honda 9.9 HP Outboard Motor
- Full Canvas Cover

Exclusions

All personal property is excluded unless specifically identified and included in the sale agreement and listing specifications. Personal property refers to all items not permanently attached to the vessel including but not limited to artwork, furnishings, and recreational or entertainment items. Advertisements, marketing materials, and/or other photography may depict the vessel with personal property, however, such personal property is excluded unless otherwise specifically included as provided herein.

Исключения

При продаже яхты исключаются личные вещи владельца.

Отказ от ответственности

Компания предоставляет описание судна или яхты добросовестно, но не может гарантировать точность этой информации, а также не ручается за техническое состояние. Покупатель должен проинструктировать своих агентов или оценщиков исследовать представленную информацию более подробно, по собственному желанию. Продажа судна или яхты, изменение цены или снятие с продажи будет происходить без предварительного уведомления.

ФОТОГРАФИИ

Starboard



Port Quarter



Bow



Bow



Сockpit



Helm



Salon



Galley



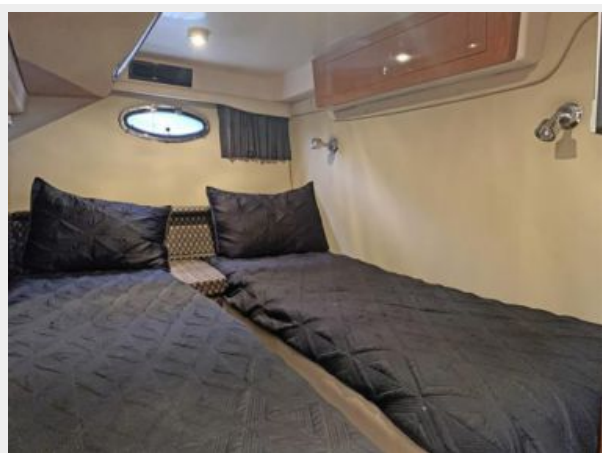
Master Stateroom



Master Head



Guest Stateroom



Guest Head



КОНТАКТЫ

Андрей Шестаков (Andrey Shestakov) – ведущий яхтенный брокер отдела продаж яхт и судов компании Shestakov Yacht Sales Inc. Официальный представитель Shestakov Yacht Sales Inc. для русскоговорящих клиентов в центральном офисе компании в Майами/Форт Лодердейл/Флорида/США.

Контактная информация

Email: andrey@shestakovyachtsales.com

Web: shestakovyachtsales.com

Телефоны

Краснодарский край: **+7(918)465-66-44**

США, Майами, Флорида: **+1(954)274-4435**

Время работы

Понедельник – Суббота: **9:00 - 21:00**
EDT

Воскресенье: **Закрито**

Адрес



Harbour Towne Marina, 850 NE 3rd St,
STE 213, Dania, FL 33004