

FUGITIVE *NAME RESERVED* — NORTHCOAST YACHTS



Судостроитель:

NORTHCOAST YACHTS

Год постройки: 2011

Модель: SHELBY

Цена: ЦЕНА ЯХТЫ ПО ЗАПРОСУ

Местонахождение: United States

Длина общая: 125' 0" (38.10m)

Ширина: 25' 6" (7.77m)

Макс. осадка: 6' 0" (1.83m)

Крейс. скорость: 16 Kts. (18 MPH)

Макс. скорость: 22 Kts. (25 MPH)

Купить FUGITIVE *Name Reserved* — NORTHCOAST YACHTS а также выбрать подходящую вам яхту из нашего каталога яхт вам поможет опытный яхтенный брокер Андрей Шестаков. На сегодняшний день компания Shestakov Yacht Sales Inc. имеет большое количество яхт в собственном списке продаж, а также тесно сотрудничает со всеми крупными яхтенными производителями по всему миру.

Для того чтобы купить яхту FUGITIVE *Name Reserved* — NORTHCOAST YACHTS а также проконсультироваться по любому вопросу связанному с покупкой, продажей, чартером яхт позвоните по телефону **+7(918)465-66-44**.

ОГЛАВЛЕНИЕ

ОГЛАВЛЕНИЕ	2
ХАРАКТЕРИСТИКИ	6
Обзор	6
Основная информация	6
Размеры	6
Скорость, вместимость и масса	6
Размещение	7
Корпус и палуба	7
Информация о двигателе	7
ПОДРОБНОЕ ОПИСАНИЕ	8
Overview	8
Walkthrough	8
Main Salon and Dining Area	10
Master Suite	11
Guest Staterooms	11
Entertainment Systems	11
Pilothouse	12
Navigation and Communication Equipment	12
Galley Equipment	14
Flybridge / Sundeck	15
Aft Deck	15
Captain and Crew Quarters	16
Main Machinery	16
Electrical System	18
Deck Equipment	19
Anchoring System	20
Piping System Materials	20
Safety and Firefighting Equipment	20

Recent Work	21
Construction and Hull Information	22
Broker's Comments	23
Exclusions	23
Исключения	23
Отказ от ответственности	23
ФОТОГРАФИИ	24
Dining Area	24
Dining Area	24
Salon	24
Salon	24
Day Head	24
Galley	24
Floating Stairway	25
Galley	25
Master Stateroom	25
Master Stateroom	25
Master Stateroom	25
Master Stateroom	25
Master Office	26
Master Bath	26
Master Bath	26
Port VIP Guest Stateroom	26
Port VIP Guest Stateroom	26
Port VIP Guest Stateroom	26
Port Guest Bath	27
Starboard VIP Stateroom	27
Starboard VIP Guest Stateroom	27
Starboard VIP Guest Stateroom	27

Starboard VIP Guest Bath	27
Starboard Guest Stateroom	27
Starboard Guest Stateroom	28
Starboard Guest Bath	28
Port Aft Guest Stateroom	28
Port Aft Guest Bath	28
Pilothouse	28
Pilothouse	28
Pilothouse	29
Stairway To Lower Deck Foyer	29
Flybridge	29
Flybridge Port Sunpad	29
Flybridge Bar Area	29
Flybridge Galley Area	29
Jacuzzi	30
Flybridge Helm	30
Flybridge	30
Flybridge	30
Flybridge Helm	30
Flybridge Helm	30
Tender Storage	31
Aft Deck	31
Aft Deck	31
Aft Deck	31
Swim Platform	31
Aft Deck	31
Engine Room	32
Engine Room	32
Engine Room	32

A/V and Electronics Room	32
Crew Cabin	32
Crew Quarters	32
Crew Cabin	33
Crew Bath	33
Stern	33
Aerial Flybridge	33
Starboard Bow Profile	33
Aerial	33
Stern At Night	34
Starboard Profile	34
Layout	34
КОНТАКТЫ	35
Контактная информация	35
Телефоны	35
Время работы	35
Адрес	35

ХАРАКТЕРИСТИКИ

Обзор

FUGITIVE is a raised pilothouse motor yacht with full walk-around decks, five staterooms including an on-deck master with split level plan. FUGITIVE was built by Northcoast Marine, a yard specializing in high-end custom pedigree yachts including quality yachts like LADY KATH and LEGENDARY. Northcoast created their masterpiece when building FUGITIVE. She was designed by Paul Frederickson. Her interior design and décor by Adriel Designs has proven to be a timeless interior using the finest materials and an exceptional combination of woods and finishes. FUGITIVE is offered to the market by her first owners, who have been the perfect custodians, keeping her in like-new condition. FUGITIVE is ready to cruise to one's favorite destination at a moment's notice.

Основная информация

Тип судна: SHELBY	Подкатегория: Raised Pilothouse
Модельный год: 2011	Год постройки: 2011
Год обновления: 2018	Страна: United States
Открытая палуба мостика: Да	Кубрик: Да

Размеры

Длина общая: 125' 0" (38.10m)	Ширина: 25' 6" (7.77m)
Макс. осадка: 6' 0" (1.83m)	

Скорость, вместимость и масса

Крейс. скорость: 16 Kts. (18 MPH)	Макс. скорость: 22 Kts. (25 MPH)
Чистый вес: 254 Pounds	Вместимость воды: 1000 Gallons
Вместимость сточного бака: 375 Gallons	Объем топливного бака: 7600 Gallons

Размещение

Всего кают: 5

Спальные места: 11

Каюта капитана: Да

Каюты экипажа: 3

Койки экипажа: 6

Спальных мест экипажа: 6

Корпус и палуба

Материал корпуса: Composite

Материал палубы: Teak

Комплектация корпуса: Semi-Displacement

Дизайнер экстерьера: Paul Fredrickson

Дизайнер интерьера: Adriel Designs

Информация о двигателе

Двигатели: 2

Производитель: Caterpillar

Модель: C32 Acert

Тип двигателя: Inboard

Тип топлива: Diesel

ПОДРОБНОЕ ОПИСАНИЕ

Overview

FUGITIVE is a raised pilothouse motor yacht with full walk-around decks, five staterooms including an on-deck master with split level plan. FUGITIVE was built by Northcoast Marine, a yard specializing in high-end custom pedigree yachts including quality yachts like LADY KATH and LEGENDARY. Northcoast created their masterpiece when building FUGITIVE. She was designed by Paul Frederickson. Her interior design and décor by Adriel Designs has proven to be a timeless interior using the finest materials and an exceptional combination of woods and finishes. FUGITIVE is offered to the market by her first owners, who have been the perfect custodians, keeping her in like-new condition. FUGITIVE is ready to cruise to one's favorite destination at a moment's notice.

Walkthrough

Boarding FUGITIVE on the aft deck one will walk through a set of automatic doors to enter her main dining and salon area, where one will be received by a dining area for 10 guests. This reverse layout has been celebrated by all who have dined there, offering aft views while still inside the controlled climate. Further forward one will find an open and comfortable seating area. The salon area offers a modern feel with an L-Shaped settee, (2) barrel chairs, and finished forward bulkhead with 63" TV. This space is accented with a large, coffered ceiling with 9' height. Going forward from the main salon to port one will reach a well-appointed day head (bathroom). Continuing forward one will pass a crew entry door, a stew's pantry and then will enter a professional "Chef's Galley".

Going forward from the main salon to starboard one will reach a formal foyer with entrance to the vessel. Here one will find a door that leads to a huge, air-conditioned space under the pilothouse where one will find all the AV, Kaleidescape equipment, Nav and back up batteries with additional ample storage. Continuing forward one will reach the custom suspended stainless stairs to the pilothouse and the large winding stairs to the guest foyer and the four guest staterooms below. Forward of the stairs one will enter the owner's on-deck master stateroom and suite. Within the master one will find a king bed, nightstands, ample built-in storage, drop down TV from ceiling, and electric blinds. Forward of the berth is a glass partition separating the master and office foyer, reached by going down two steps. Off this foyer is the entrance to a large his and her bath with a center shared bath/shower and private toilets, closets, and ample storage.

Going back to the formal foyer one will find a stairway that goes up to the pilothouse or down to the guest accommodations. Going down one will land in the guest foyer where four guest cabins

are found. There are three VIP staterooms, two forward and one aft. In addition, there is a twin cabin with pullman found aft to starboard, all with large baths and shower. All guest cabins have ample closet space, storage, and entertainment. Going back up the stairs to the formal foyer one can take the custom stainless steel suspended stairs to the pilothouse. The pilothouse is very roomy with a raised L-Shaped settee and table giving you a 270-degree view. The instrumentation is state of the art with all monitors folding down into the dash to make a sleek, no obstruction view. There is additional seating to starboard with a power-adjustable lounge outboard. One can reach the flybridge from the pilothouse or the aft deck.

Once on the flybridge, forward is a helm with full instrumentation with a wing station control either side and (2) comfortable and adjustable Stidd chairs. As one continues aft on the bridge deck one will see (2) L-shaped settees with a custom teak table held by three artistic stainless steel legs. One can work their way down a couple steps to the deck area where the wet bar can be found. The bar has (4) stools, fridge and freezer drawers, BBQ, sink and storage. Across from the bar is a large Jacuzzi that accommodates (8) guests. Aft of the bar and jacuzzi, one will find (2) large sunbeds on either side. There is a SunBright TV that swivels for visibility from all areas of the bridge deck. Further aft one will find an 18' tender and exercise gear. When the tender is launched this area can be used for additional entertainment and lounging. There are exterior steps found here to take one down to the aft deck.

On the aft deck one will find a large U-shaped built-in settee with (2) large high gloss teak tables with (4) chairs and seating for 12 guests. There is a service bar forward to port and a TV above. From the aft deck one can reach the swim platform or the bow by going forward on wide and covered walkaround side decks. One can reach the swim platform down a set of stairs, located on either side of the transom. Once on the swim platform one will have easy access to the water, tender and water toys.

The large lazarette is entered from the swim platform, where paddleboards and dive gear are stored. One can get access to the crew area and engine room through a watertight door in the transom. One can also access this area from a doorway on the aft deck. The crew area is made up of three staterooms with a captain's cabin with ensuite and two crew cabins with a shared head. FUGITIVE's engine room is equipped with the best equipment found in the industry including Caterpillar C-32 main engines, Northern Lights 65kw generators, Head Hunter treatment system, Trac Zero Stabilizers, 2000 GPD Sea Recovery watermaker, Atlas Power shore convertor, Dometic chilled water air conditioners, Alfa Laval fuel centrifuge fuel polishing system and American bow and stern thrusters, with a complete list of equipment in spec available below.

Key Features

- Original owner and has never been chartered
- Master on deck
- Five large staterooms
- Cruise and speed performance
- Zero speed stabilizers
- Shallow draft
- Full walk-around side decks
- Underwater lights
- Atlas seamless transfer
- Lower hours on mains and gens
- State of the art A/V system throughout
- Originally built to RINA class
- Nautical Structures built-in gangway port and starboard
- Power blinds throughout
- Extended warranty of Caterpillar C32 through March 2022

Main Salon and Dining Area

Main dining and salon area, where one will be received by a dining area for 12 guests. This reverse layout has been celebrated by all who have dined there, offering aft views while still inside the controlled climate. Further forward one will find an open and comfortable seating area. The salon area offers a modern feel with an L-Shaped settee, (2) barrel chairs, and finished forward bulkhead with 63" TV. This space is accented with a large coffered ceiling with 9' height. Going forward from the main salon to port one will reach a well-appointed day head (bathroom).

- Enter the Main Salon through an automatic glass door
- Dining table that can accommodate up to 12 dinner guests
- A casual seating lounge area
- Vaulted overhead that provides nine feet of elegant headroom

Equipped with a full entertainment center including:

- 63" Samsung 3D Plasma television
- 10" Martin Logan Dynamo subwoofer
- 4 x Speakercraft CRS8Three ASM86630 speakers
- 2 x Vienna acoustic wall mount speaker with silk tweeter and woofers
- Denon DVD1940 CIBLA single disc player
- Sonance iPort FS3 ondesk iPod dock with IR control capability

Master Suite

The two-level on-deck Owner's Suite features a king-sized bed. Forward beyond the bed and one step down is the custom desk and chair, dressing area, and (2) large closets just forward is the entry to a large His and Hers bathroom, with recessed marble Jacuzzi clad tub and shower that affords an overhead height of nearly nine feet. In addition to the spacious accommodations and elegant décor, the Northcoast 125 Owner's Suite has tremendous storage and a full complement entertainment center including the following:

- 42" Pioneer Elite plasma television
- TV drop down from the ceiling on an INCA TV Lift
- Definitive Tech
- Supercube III Ultra-Compact sub
- 5 x Speakercraft CRS8Three ASM86630 speakers
- URC-DMS100 audiovisual controlled by URC MRX10F Matrix
- 2 x Speakercraft IRE3.0

Guest Staterooms

From the starboard main deck an open stairway finishes at a central lower foyer. Forward are (2) VIP guest staterooms, each with queen beds and large bathrooms. Two additional guest cabins are aft; the port cabin has a queen bed and the starboard cabin has (2) lower twin beds plus a Pullman berth. Central Utility rooms to the staterooms include laundry to port with twin washer/dryers and storage, freezer, and wine cooler starboard.

Entertainment Systems

Port Forward Stateroom:

- 40" Samsung LCD HDTV
- Denon DVD1740, DVD player
- DirecTV DTVHDVR21, Direct TV HD DVR
- 2 x Speakercraft CRSTWO speaker with silk tweeter and woofer

Port Aft Stateroom:

- 22" Samsung LCD HDTV with ATSC tuner
- Denon DVD1740, DVD player
- DirecTV DTVHDVR21, Direct TV HD DVR
- 2 x Speakercraft CRSTWO speaker with silk tweeter and woofer

Starboard Forward Stateroom:

- 40" Samsung LCD HDTV
- Denon DVD1740, DVD player
- DirecTV DTVHDVR21, Direct TV HD DVR
- 2 x Speakercraft CRSTWO speaker with silk tweeter and woofer

Starboard Aft Stateroom:

- 22" Samsung LCD HDTV with ATSC tuner
- Denon DVD1740, DVD player
- DirecTV DTVHDVR21, Direct TV HD DVR
- 2 x Speakercraft CRSTWO speaker with silk tweeter and woofer

Pilothouse

The raised Pilothouse features the latest in navigational equipment and is designed with adjustable flat-screen monitors that will fold down flush for a wide smooth console. A comfortable platform settee for six on port with a high-low cocktail table is complemented by a powered adjustable chaise lounge on starboard, perfect for reading or gazing out the large windows. All aspects of this wheelhouse have been well thought out. The console lifts to access emergency steering and backup displays nestled alongside a shelf that supports the yacht's computer keyboard. Meticulously arranged wiring (which can also be seen when opening any access panel in the boat) is also visible through acrylic panels.

- Integrated helm with folding screens into dash
- Raised L-Settee in PH with table and additional seating with lounger
- 270-degree views

Navigation and Communication Equipment

- Atlas XM19 (Aquamet 22HS equivalent)
- Maretron system for the monitoring of key systems and tankage
- Display on pilothouse monitors and crew computer screen

Furuno

- Maxsea Charting software
- Navnet 3D black box
- DRS 12A radar
- Navnet DFFI sounder box
- Navnet transducer
- FAR 2117 BB radar
- 6' Sweep antenna
- GS100 Upgrade satellite compass
- HUB 101 network hub
- GP 150D GPS
- FI 501 Wind display
- FI 5001 Wind masthead transducer
- FI 5002 J Box
- 3 x FI 503 Multi-displays
- FELCOM 16 SSAS
- NX 300 Navtex
- FAX 30 Weather Fax
- FA 150 AIS
- Caterpillar dual engine monitor installed at helm

Simrad

- AP50 autopilot
- AP50 second station
- RC25 Fluxgate Compass
- NI300X NMEA Interface Box

Icom

- M802 Single Sideband radio
- AT140 tuner
- 2 x M604 VHF
- M304 VHF
- RAM microphone 1
- RAM microphone 2

Digital

- 2 x VHF antenna 16'
- SSB antenna 16'

- AIS antenna 8'
- VHF antenna 8'
- CELL antenna 4'

Teluar

- 5X7T Blackbox cell phone FLIR
- NAVIGATOR II Thermal camera second station

Harter

- 3 x Kahlenberg horns
- M9 satellite dish TV
- FB500 Satellite telephone WAVE
- Aegean 1.4Hz and 5Hz Wi-Fi

Dish

- 15 211K Satellite Receiver

Elbex

- EXS128 Camera system controller
- 2 x EXC 7207 Camera
- EXC 74 Camera

Galley Equipment

The professional chef's galley is fully equipped with Wolfe and Sub-Zero appliances and features generous storage and surface space. Styling and functionality make this galley an exceptional work area that will please the most demanding professional chefs.

- Sub Zero 48" side-by-side
- Wolfe 30" wall oven
- Wolfe 36" cooktop
- LG microwave hood
- ASKO 24" dishwasher

- Sub Zero 24” under counter wine storage
- Moen faucet
- Viking 18” trash compactor
- 2 x Speaker craft CRS8
- 3 x ASM86630 Speakers

Flybridge / Sundeck

On the flybridge forward is a helm with full instrumentation with a wing station control either side and (2) comfortable and adjustable Stidd chairs (recovered and renewed 2019). Aft on the bridge deck (2) L-shaped settees with a custom teak table. Down a couple steps to the deck area is a wet bar with (4) stools, fridge and freezer drawers, BBQ, sink and storage. Across from the bar is a large 8-person Jacuzzi. Aft of the bar and Jacuzzi, are (2) large sunbeds on either side. There is a SunBrite TV that swivels for visibility from all areas of the flybridge and sundeck.

- A hard-top twin L-settee with custom tables either side
- Fully equipped helm with 2 x Stidd helm chairs
- Large wet bar with fridge, freezer, icemaker, BBQ and 4 x bar stools
- Large jacuzzi for 6-8 guests with two large sunbeds on either side
- Access to flybridge from PH or aft deck
- 2 x Settees (molded platform FRP base) with upholstered cushions
- 2 x Speakercraft CRS8 speakers
- A bar complete with BBQ, sink, 4 x custom stainless-steel fridge/freezer drawers
- Outdoor TV with custom stainless-steel stand and cover
- Tender area with 2500lb Nautical Structures crane and life raft storage (Spectra Line - fully rebuilt Summer 2020)

Aft Deck

On the beautiful aft deck is a large U-shaped built-in settee with (2) large high gloss teak tables with (4) chairs and seating for 12 guests. There is a service bar forward to port and a TV above. This area gives entry to the main salon with covered walk-around side decks and swim platform.

- Aft deck access from either side of swim platform
- Aft dining for 10 guests
- Settee molded FRP base with upholstered cushions
- 2 x Epoxy coated teak dining tables with stainless steel legs
- Bar molded FRP cabinets with antique black granite top
- SubZero fridge under counter

- Raritan icemaker
- Emergency docking controls in locker

Captain and Crew Quarters

Access to the crew area and engine room is through a watertight door in the transom. This area can also be accessed from a doorway on the aft deck. The crew area is made up of three staterooms with an ensuite captain's cabin and (2) crew cabins with a shared head.

Captain's Cabin

- DirecTV DTV HDVR21, DVD player
- 2 x Speakercraft CRSTWO speakers with silk tweeter and woofer
- 32" Samsung LCD HDTV
- Denon DVD1740
- DVD player

Crew Quarters

- Open crew galley/lounge
- Sub Zero 24" under counter fridge/freezer combo
- Larger washer/dryer
- Denon DVD1740, DVD player
- DirecTV DTV HDVR21, Direct TV HD DVR
- 2 x GEFEN EXTCOMPAUD143 audio distribution amplifier
- 19" Samsung LCD HDTV
- 2 x Speakercraft CRSTWO speakers with silk tweeter and woofer
- Speakercraft IRC1.1 Mini receiver
- Fold-down TV/DVD player at each berth

Main Machinery

FUGITIVE is equipped with the best equipment found in the industry including Caterpillar C-32 main engines, Northern Lights 65kw generators, Head Hunter treatment system, Trac Zero Stabilizers, 2000 GPD Sea Recovery water maker, Atlas Power shore convertor, Dometic chilled water air conditioners, Alfa Laval fuel centrifuge fuel polishing system and American bow and stern thrusters, complete list of equipment below.

- 2 x Caterpillar C32 ACERT, 1950hp @ 2300RPM
- Engine hours: port 2,824; starboard 2,841 (July 2021)
- Main engine exhaust manufactured by Marine Exhaust Systems
- New spray rings (Winter 2019)
- Main engines are mounted with Caterpillar vibration/isolation pads (all new Summer 2020 with full engine dynamic balance)
- Transmissions ZF 3055 2.5:1 Reduction
- 4 x Caterpillar stations located on flybridge center console, P/S wing stations, & pilothouse
- 2 x 40gph plus prime pump
- Stainless-steel ball valves on welded stainless-steel manifold
- AC pump through fixed manifold for new and waste oil change
- Alfa Laval fuel centrifuge fuel polishing system
- Racor 75/900MAX main engines Racor 500MA generators
- Sea Recovery "CoralSea" watermaker providing 2000 gallons per day (HP pump renewed Summer 2020 and new PLC controller screen)
- Headhunter Aquabox freshwater pumps
- Delta-T application using 2 x 21" intake blower units with variable frequency drives (new fans, motors, frequency drives, and controller, Summer 2020)
- The system incorporates manual and automatic variable speed control
- Bow thruster by American Bow Thruster, hydraulically driven from generators (Unit is rated @ 65 hp, with 16" diameter integral FRP hull tube)
- Zero Speed stabilizers by American Bow Thruster, model #440 stabilizer units w/16sqft, with reverse lockout. Touch screen controls at pilothouse and flybridge (new actuators and hoses, Summer 2020)
- Propellers: 2 x five blade, manufactured by Michigan, CX 500 NIBRAL (brought to S-Class Summer 2020)
- Shaft logs are one-piece FRP construction each equipped with dripless, water lubricated, shaft seals inboard and underwater cutlass bearings with cooling water pickup (all new shaft seals and cutlass with full alignment, Summer 2020)
- Struts are constructed of welded 316 stainless steel
- Foil shaped rudders are molded urethane with internal steel armatures, 11 sq ft
- Rudder stocks are 5" diameter
- Sacrificial zinc anodes located on shafts, hull bottom and transom

Generators

- 2 x Northern Lights rated @ 65 KW (each)
- Generator hours: port 7,501; starboard 7,411 (July 2021)
- Three-phase 120/208 VAC @ 1800RPM with sound shields
- 5,000 hours serviced completed
- Double isolated with factory electro hydrostatic mounts

- Equipped with Northern Lights sound enclosures
- Northern Lights generator exhaust system with combination water lift muffler and water bypass shedder (Cool, dry exhaust outlet at transom)
- New wet Elbow spray rings, Fall 2020

Hydraulic System

- American Bow Thruster hydraulic system consists of 2 x generator engine driven hydraulic pumps
- Provides hydraulics for stabilizers, bow thruster, anchor windlass, warping winches, and tender crane
- New lines and hydraulic power take offs 2018

Air Conditioning System

- Dometic chilled water, reverse cycle system, 20-ton capacity
- 4 x Dometic Tital Titanium chillers
- 2 x 200 CFM makeup air handler providing fresh air to vessel
- Redundant chilled loop and raw loop pumps installed (Winter 2020)

Steering System

- Kobelt electronic/hydraulic system driven from main engines
- Five stations including pilothouse, flybridge, wing stations (port and starboard) and aft deck wired remote

Electrical System

- Vessel electrical bonding with 1" X 1/8" tinned copper bar
- 120/208 VAC three-phase & 24-volt DC
- Ship's service all marine grade power wire
- Wire and cable runs are fully supported and neatly arranged
- Wiring and cables passing through watertight bulkhead transits maintain watertight and fire integrity

Batteries

- House bank 4 x 12-volt glass mat for 24 volts

- Starboard main start 2 x 12-volt glass mat for 24 volts
- Port main start 2 x 12-volt glass mat for 24 volts
- Port generator start 12-volt group 31
- Starboard generator start 12-volt group 31
- Emergency radio 2 x 12-volt glass mat
- Battery changing (inverters/charging)
- House 2 x trace inverter/chargers SW 4024
- Statpower 10i battery charger

Shore Power

- 4 x 100amp 3-phase
- 2 x 100a single phase
- 2 x 100a 3-phase
- 480v 3-phase
- Atlas can also take 50 or 60hz

Shore Power System

- Atlas 75 KVA shore power system (new controller in PLC in 2019)
- Automatic generator starts
- Seamless transfer

Distribution Panels

- Atlas primary AC panel distribution
- Square D sub AC panel distribution
- Atlas primary DC panel distribution
- Comar sub DC panel distribution

Deck Equipment

FUGITIVE's teak decks are found in excellent condition. She has covered walkaround side decks, making comfortable passage forward and aft. Her spacious bow deck makes for easy handling of lines and operation of anchors. On the bow there is a an extra-large bosun's locker, perfect for the storage of fenders and deck equipment.

- 6 x "Megafend" fenders (24" x 72")

- 1.25" 12-strand megabraid docking lines
- Exterior freshwater hose bibs locations at foredeck, upper deck, swim step
- Outdoor shower located on the upper deck
- Large lazarette, perfect for water toys and dive gear
- Aft Deckhouse Freeman weather tight curved salon aft door, slider full glass w/twin sidelights (door is electric operation, programmable, with inflating bladder seal)
- Flying Bridge Freeman weather tight horizontal sliding door with full glass
- Transom Pacific Coast aluminum watertight dogged pantograph door
- Aft Deck to Crew Pacific Coast aluminum weathertight door with dogs

Anchoring System

- 2 x Maxwell 6000 vertical capstan hydraulic windlass (motors and windlass full rebuilt, Summer 2020)
- 2 x Davis HHP 450lb anchors stainless steel in port/starboard fabricated 316 stainless steel anchor pockets (chain re-galvanized Summer 2020)
- Bollards are 316 stainless steel located at main deck, 2 x foredeck, 2 x aft deck and 2 x swim step
- Hawes rings are 316 stainless steel located at main deck, 2 x foredeck, 2 x aft deck
- Hawes rings with horns are 316 stainless steel located at main deck, 4 x side decks

Piping System Materials

- Freshwater Aqua Pex certified
- Black Water ABS Sch 40
- Grey Water ABS Sch 40
- Chiller mains insulated copper mainline and Aqua Pex end lines
- "Parker" 221 FR USCG rated fuel hose & stainless steel Sch 40 pipe
- "Parker" Hydraulic hose high-pressure lines #772TC rated at 4000 PSI
- Emergency fire stainless steel Sch 40 pipe
- Bilge suction emergency line SS SCH 40 pipe

Safety and Firefighting Equipment

- GE 54INCSRXT audible smoke detectors in each room/area and GE 2818PL 24VDC heat detector in galley
- KIDDE SBS FM200 automatic and manually activated via engine room
- Fenwal 12X27020 heat detector and manual pulls located inside and outside the engine room
- 2 x 10-man Zodiac life rafts
- 19 x Adult USCG approved life jackets

- 4 x Child USCG approved life jackets
- 2 x 30" Life rings
- Zee model #166 medical kit
- 6 x USCG approved handheld flares
- 6 x Parachute flares
- 22 x 10lb Fire extinguishers at locations throughout the yacht
- Hydraulic Electric MP1 5hp, with 2 x hydrants located on deck: 5 x bilge suctions
- Application is provided with an AC motor driven pump and hydraulic engine driven pump
- Manifold controls make it possible to use either pump as fire or bilge pump simultaneously
- Silent Aire 100/24 120 PSI, silent compressor w/ 5-gal accumulator tank located in E/R
- 3 x Air supply outlets, located in engine room, forward bosun locker, and flybridge 20gal reservoir tank located on flybridge for horn

Recent Work

- 2000 hours Caterpillar C32-Acerts service
- New aftercoolers on both main engines (Summer 2019)
- 5000 hours Northern Lights generators (65 kw) service
- Atlas system serviced
- NEW Power takeoffs for stabilizers and bow thruster
- NEW Hydraulic lines
- Headhunter Sanitation System serviced, new Tital Wave pump installed (Fall 2020)
- Nautical Structures davit serviced, full rebuild (Summer 2020)
- Nautical Structures recessed gangplanks (port/stbd) serviced
- Trac Zero Speed stabilizers serviced
- Sea Recovery watermaker (2000 GPD) serviced, new PLC and HP pump (Fall 2020)
- Dive compressor serviced
- Glendenning power reels (Cable Master) serviced
- Aft electronic door serviced
- 4 x New AC chillers and control boards – Dometic Titan Titanium models
- NEW Crew HVAC units
- 2 x New make-up air handlers
- Ozone Generators all HVAC serviced
- 2 x Custom ceramic coating sea strainers
- All Air Con raw and chilled water pumps have redundant backups
- Freshwater system upgraded to Headhunter Aquabox top of the line with Mach 5 as back up
- Alfa Laval fuel centrifuge fully serviced
- NEW Hattleland screens flybridge and pilothouse
- NEW updated WIFI System
- Fire system certified/tank replaced
- 2 x Serviced life rafts
- 3 x Washers serviced or replaced

- 3 x Dryers serviced or replaced
- NEW All exterior canvas and covers
- NEW Crew flooring replaced
- NEW Treadmill on flybridge
- Canvas (Exterior)
- Teak surround Jacuzzi
- Polished anchors/pockets
- 10 x Underwater Lights
- Underwater Camera
- Dive Compressor
- Treadmill
- 2 x Life rafts/canisters
- 4 x Custom SS fridge/freezer drawers on flybridge
- Alpha Lavel system
- A/V and electronics
- Kaleidescape system (all TVs show SAT TV, Kaleidescape, navigation screen, and underwater camera)
- CCTV Cameras
- Custom TV/stand on flybridge
- AB 17 DLX RIB
- AB 17 DLX Options
- AB Tender custom cradle
- Granite countertops
- 10 x Custom dining chairs
- Custom desk (master stateroom)
- Custom fiberglass shelves (Fiddley & Forward)

Construction and Hull Information

Hull construction of sandwich composite laminate, using 100% vinylester resin, with multiaxial e-glass over CORECELL foam core. Stiffening is designed with a matrix of composite bulkheads and longitudinal girders. Six watertight compartments are incorporated into the design including the collision bulkhead forward. Structural design originally based upon the standards of the American Bureau of Shipping “1990 Guide for Building and Classing Motor Pleasure Yachts.”

Thru-hull penetrations are locally reinforced and at the penetrated area the core margin is closed off by solid laminate. Any thru-hull fittings and/or mechanical fastenings are bedded and sealed with polyurethane adhesive/sealant, such as 3M5200.

Framing members (except watertight bulkheads) incorporate limber holes for free water drainage

to bilge sumps. Limber holes are structurally sealed with FRP laminate. Limber holes are arranged to limit bilge water accumulating in isolated pockets.

The Deckhouse / Pilothouse / Bulkhead structures are designed and constructed to be as lightweight as possible, consistent with required scantlings. Components are laminated with 100% vinylester resin, and knitted eglass fabrics. Deckhouse cores are crosslinked PVC and linear polymer foam materials, vacuum bagged. Through deck and through house penetrations are locally reinforced and all penetrations are closed off by solid laminate. Through laminate mechanical fittings and all fastenings are bedded and sealed with polyurethane adhesive/sealant, such as 3M5200.

Broker's Comments

FUGITIVE is one of the finest American yachts built of her size. Northcoast Shipyard did an exceptional job in building FUGITIVE using only the best build methods, best build materials and the best equipment available for the fit and finish. She is truly a standout in her class and one that is a must-see.

Exclusions

- Vessel name "Fugitive" is excluded and will not convey
- All items monogrammed with yacht name "Fugitive"

Исключения

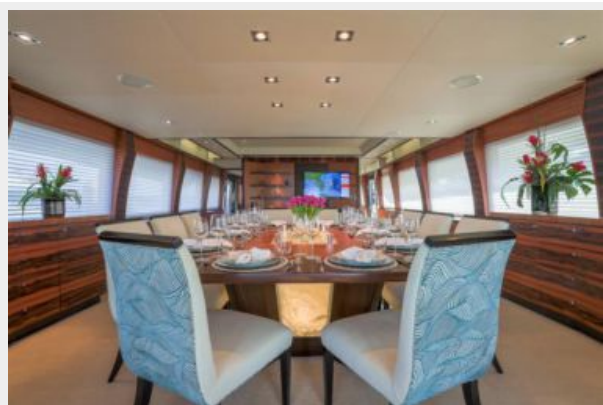
При продаже яхты исключаются личные вещи владельца.

Отказ от ответственности

Компания предоставляет описание судна или яхты добросовестно, но не может гарантировать точность этой информации, а также не ручается за техническое состояние. Покупатель должен проинструктировать своих агентов или оценщиков исследовать представленную информацию более подробно, по собственному желанию. Продажа судна или яхты, изменение цены или снятие с продажи будет происходить без предварительного уведомления.

ФОТОГРАФИИ

Dining Area



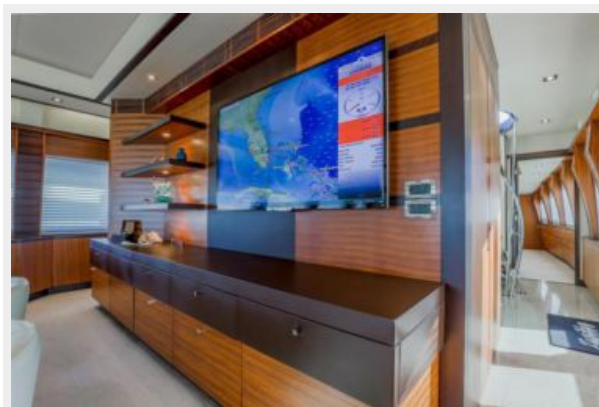
Dining Area



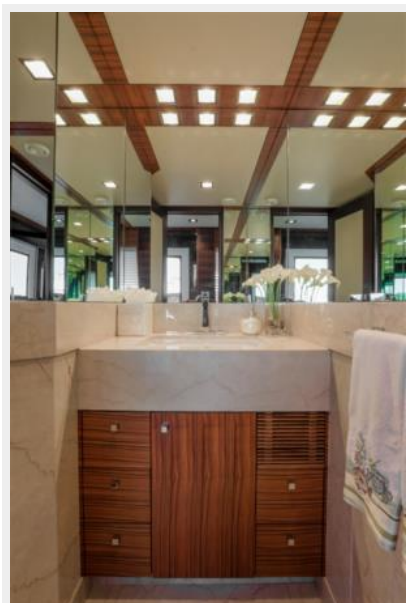
Salon



Salon



Day Head



Galley



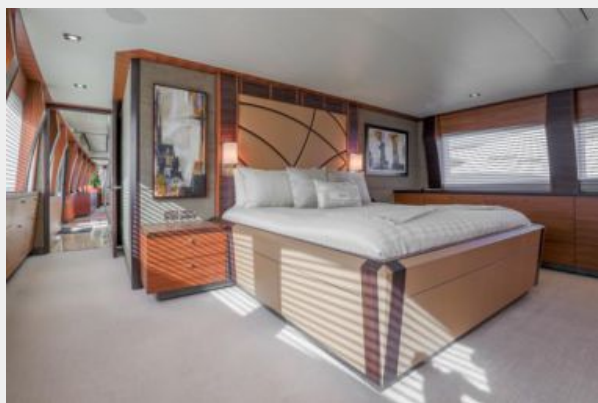
Galley



Floating Stairway



Master Stateroom



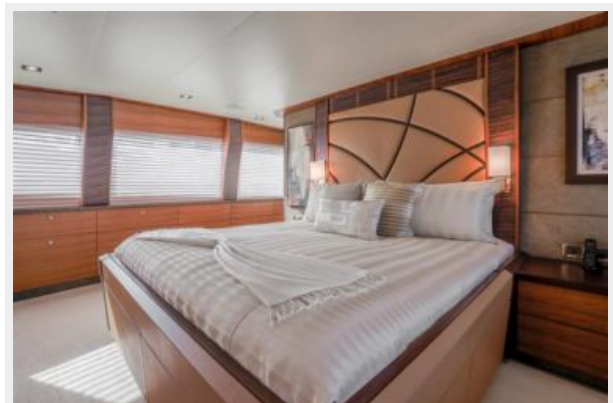
Master Stateroom



Master Stateroom



Master Stateroom



Master Office



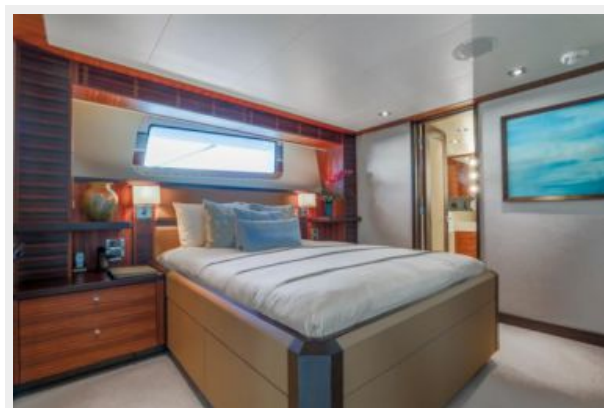
Master Bath



Master Bath



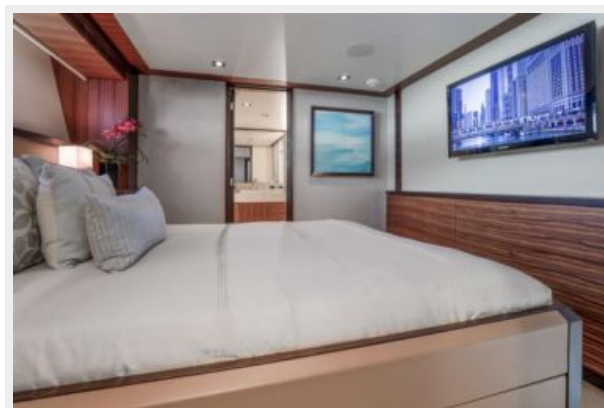
Port VIP Guest Stateroom



Port VIP Guest Stateroom



Port VIP Guest Stateroom



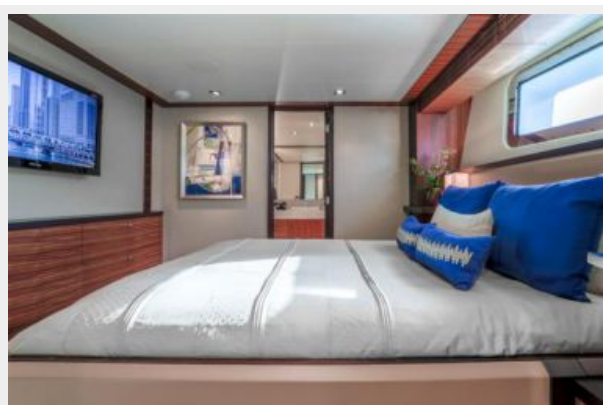
Port Guest Bath



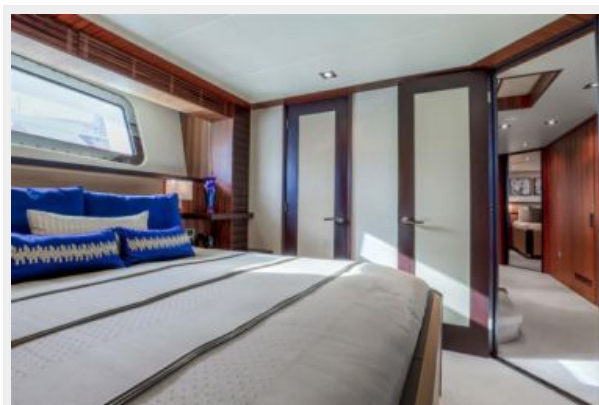
Starboard VIP Stateroom



Starboard VIP Guest Stateroom



Starboard VIP Guest Stateroom



Starboard VIP Guest Bath



Starboard Guest Stateroom



Starboard Guest Stateroom



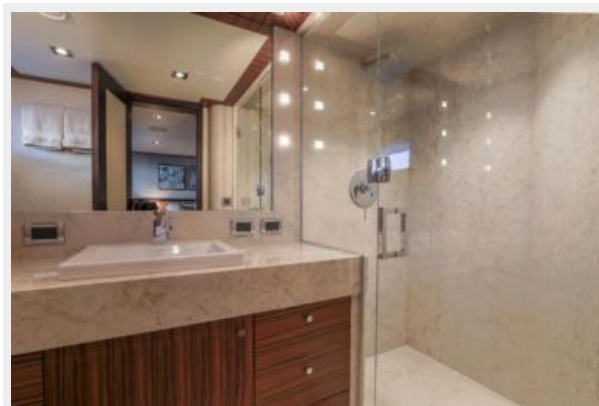
Starboard Guest Bath



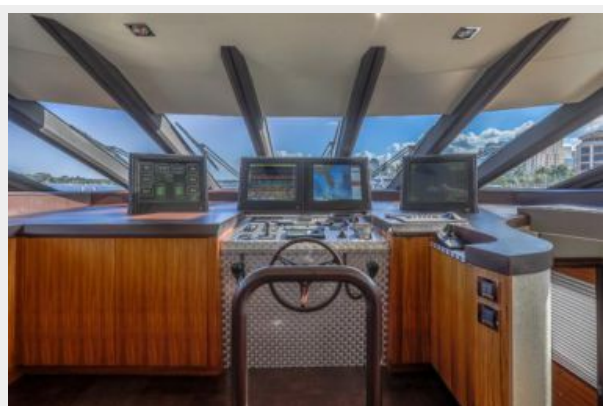
Port Aft Guest Stateroom



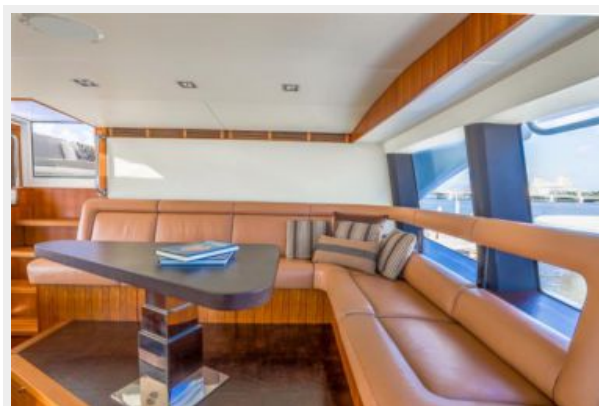
Port Aft Guest Bath



Pilothouse



Pilothouse



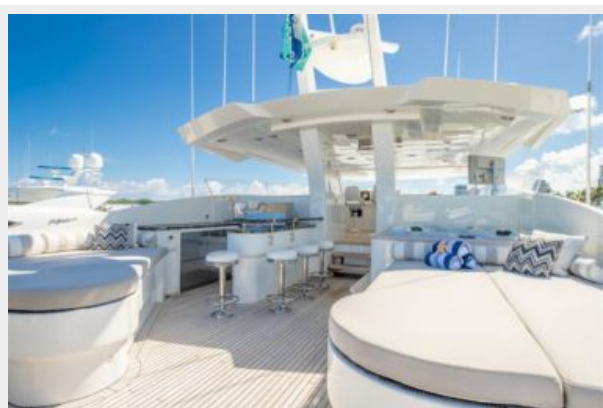
Pilothouse



Stairway To Lower Deck Foyer



Flybridge



Flybridge Port Sunpad



Flybridge Bar Area



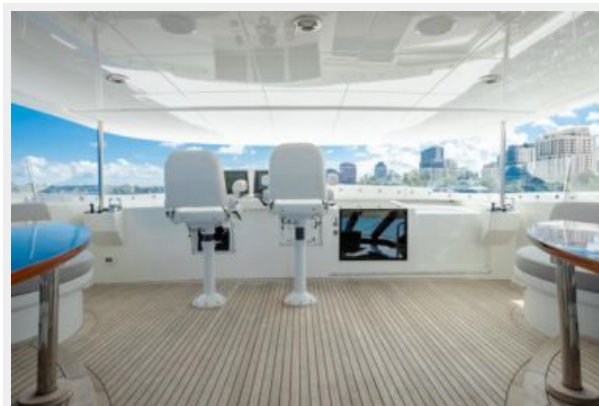
Flybridge Galley Area



Jacuzzi



Flybridge Helm



Flybridge



Flybridge



Flybridge Helm



Flybridge Helm



Tender Storage



Aft Deck



Aft Deck



Aft Deck



Aft Deck



Swim Platform



Engine Room



Engine Room



Engine Room



A/V and Electronics Room



Crew Quarters



Crew Cabin



Crew Cabin



Crew Bath



Stern



Aerial Flybridge



Starboard Bow Profile



Aerial



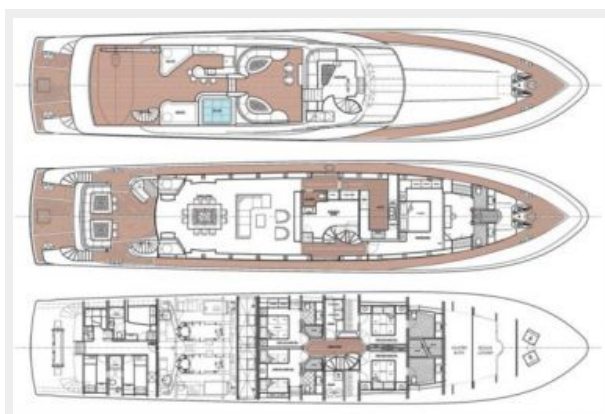
Stern At Night



Starboard Profile



Layout



КОНТАКТЫ

Андрей Шестаков (Andrey Shestakov) – ведущий яхтенный брокер отдела продаж яхт и судов компании Shestakov Yacht Sales Inc. Официальный представитель Shestakov Yacht Sales Inc. для русскоговорящих клиентов в центральном офисе компании в Майами/Форт Лодердейл/Флорида/США.

Контактная информация

Email: andrey@shestakovyachtsales.com

Web: shestakovyachtsales.com

Телефоны

Краснодарский край: **+7(918)465-66-44**

США, Майами, Флорида: **+1(954)274-4435**

Время работы

Понедельник – Суббота: **9:00 - 21:00**
EDT

Воскресенье: **Закрито**

Адрес



Harbour Towne Marina, 850 NE 3rd St,
STE 213, Dania, FL 33004