

DULCINEA — GRAND BANKS



Судостроитель: GRAND BANKS

Год постройки: 1987

Модель: Trawler Yacht

Цена: **ЦЕНА ЯХТЫ ПО ЗАПРОСУ**

Местонахождение: United States

Длина общая: 31' 11" (9.73m)

Мин. осадка: 3' 9" (1.14m)

Крейс. скорость: 7.5 Kts. (9 MPH)

Купить Dulcinea — GRAND BANKS а также выбрать подходящую вам яхту из нашего каталога яхт вам поможет опытный яхтенный брокер Андрей Шестаков. На сегодняшний день компания Shestakov Yacht Sales Inc. имеет большое количество яхт в собственном списке продаж, а также тесно сотрудничает со всеми крупными яхтенными производителями по всему миру.

Для того чтобы купить яхту Dulcinea — GRAND BANKS а также проконсультироваться по любому вопросу связанному с покупкой, продажей, чартером яхт позвоните по телефону **+7(918)465-66-44**.

ОГЛАВЛЕНИЕ

ОГЛАВЛЕНИЕ	2
ХАРАКТЕРИСТИКИ	5
Обзор	5
Основная информация	5
Размеры	5
Скорость, вместимость и масса	6
Размещение	6
Корпус и палуба	6
Информация о двигателе	6
ПОДРОБНОЕ ОПИСАНИЕ	7
Upgrades	7
Grand Banks 32 Standard Equipment List	7
Navigation Equipment	13
Additional Mechanical Equipment	13
Additional Electrical Equipment	13
Additional Hull and Deck Equipment	14
Spare Parts Kit for Engine	14
Accommodations	15
Исключения	16
Отказ от ответственности	16
ФОТОГРАФИИ	17
Grand Banks 32 Dulcinea	17
Dulcinea outside covered storage shed	17
Teak decks and anchor platform, anchor windlass and wash down	17
New canvas main deck bimini, flybridge cover and dodgers	17
Varnished cap rail, stainless steel deck fittings	18
Lofrans anchor windlass	18
Teak deck and cap rail in very good condition	18

Stainless steel hawse pipes and cleats	18
Lazarette with teak grate	19
Exterior window frames	19
Exterior varnish and Gelcoat	19
Aft deck with teak sole, flybridge ladder, gelcoated transom, teak swim platform	19
Ladder to flybridge deck	20
Aft deck cover with Flybridge access	20
Teak Grand Banks wheel with stainless steel rim	20
Upper Helm Station with electronics locker	20
Upper Helm Vetus Bpw Thruster controls	21
Datamarine Depth and Speed displays at Upper Helm	21
Electronics locker at Upper Helm with Apelco VHF radio and Robertson Auto Pilot controls	21
Flybridge deck: mast and bimini fold easily for indoor storage	21
Teak yacht table, parquet cabin sole	22
Main Saloon with drop leaf teak yacht table	22
Portside settee, looking forward	22
Starboard side L settee: fabrics in excellent condition, heat and ac vents	22
Port settee looking aft	23
Refinished cabin sole	23
Lower Helm Station	23
Lower helm station with electronics locker above	23
Lower Helm engine and bow thruster controls	24
Garmin 1242xsv and JRC 1000 Radar at Lower Helm	24
Garmin GPS at Lower Helm	24
Raster Scan JRC 1000 Radar	24
LPG Control Panel over head at Lower Helm	25
Extended helm seat	25
Lower Helm seat: widened to a double helm seat	25
AC/DC Control Panel at Lower Helm	25

Drawer storage aft of Lower Helm seat	26
Galley with Princess range, 12V refrigerator/freezer, stainless steel sink	26
3 burner propane Princess stove with oven	26
Grunert stainless steel icebox	26
Forward stateroom V berth with storage beneath	27
Head with teak trim, opening window, shower	27
Head with stainless steel sink, Formica countertop	27
Head with teak cabinet doors and trim, teak grating on sole and in shower	27
Marine toilet: no leaks here!	28
Ford Lehman 135 hp engine	28
Ford Lehman engine, Groco strainers	28
Engine: New exhaust elbow	28
Northern Lights 8kW generator, teak grating in engine room, fiberglass battery box	29
Generator sound shield, fuel transfer pump	29
Imtra Windlass Control Box mounted in Engine Room	29
Northern Lights 8 kW generator	29
Generator: dual Racor filters, exhaust, muffler	30
Engine: Groco raw water strainer	30
Grand Banks 32 Sedan Layout	30
Cable steering gear, Y valve, macerator	30
КОНТАКТЫ	31
Контактная информация	31
Телефоны	31
Время работы	31
Адрес	31

ХАРАКТЕРИСТИКИ

Обзор

The 1987 Grand Banks 32 is the second Grand Banks designed by Kenneth Smith of Lyme, CT, and the third and final version of the Grand Banks 32. She is intended to be the true long-distance cruiser. She carries 220 gallons of fuel, and with the Ford Lehman engine, she cruises at 7.5 knots, burning 2.2 gallons per hour, with a cruising range of 1500 miles!

This Grand Banks 32 Sedan has had only 2 owners since new in 1987 and is the rare low maintenance model with Gelcoated transom (no teak), stainless steel chocks and cleats, and stainless steel safety rails. Grand Banks 32 "**Dulcinea's**" owners have kept her under a roof for the last 19 years, thus greatly reducing depreciation from the UV rays. The cruising life of Grand Banks 32 **Dulcinea** has been exclusively in the temperate waters of the Chesapeake Bay, which has kept her bottom in better condition than a southern boat. With an excellent maintenance and upgrade history, low hours on a rebuilt Ford Lehman engine, and covered storage for 2/3 of her life, Grand Banks 32 **Dulcinea** has more life left in her than any other boat of this vintage.

Основная информация

Тип судна: Trawler Yacht	Подкатегория: Sedan
Модельный год: 1987	Год постройки: 1987
Страна: United States	Верх: Open W/Bimini Top
Открытая палуба мостика: Да	Кубрик: Да

Размеры

Длина общая: 31' 11" (9.73m)	Длина по ватерлинии: 11' 6" (3.51m)
Мин. осадка: 3' 9" (1.14m)	Трапы: 19' 4" (5.89m)
Длина привального бруса: 32' 0" (9.75m)	

Скорость, вместимость и масса

Крейс. скорость: 7.5 Kts. (9 MPH)

Дальность на крейсерской скорости:
1500

Водоизмещение: 17000 Pounds

Вместимость воды: 110 Gallons

Вместимость сточного бака: 30 Gallons

Объем топливного бака: 250 Gallons

Расход топлива: 2.2 Gallons

Размещение

Всего кают: 1

Всего коек: 2

Спальные места: 3

Всего ком. состава: 1

Корпус и палуба

Материал корпуса: Fiberglass

Материал палубы: Teak

Комплектация корпуса: Modified Deep Vee

Цвет корпуса: White

Отделка корпуса: Aluminum

Дизайнер корпуса: Grand Banks

Дизайнер экстерьера: Grand Banks

Дизайнер интерьера: Grand Banks

Информация о двигателе

Двигатели: 1

Производитель: Ford Lehman

Модель: 2725E/P55201Z6

Тип двигателя: Inboard

Тип топлива: Diesel

ПОДРОБНОЕ ОПИСАНИЕ

Upgrades

Engine Rebuilt in May of 2001 at 1873 hours

Fuel transfer pump (allows for shifting of fuel between tanks) 2002

Original black iron fuel tanks replaced with full-size aluminum tanks

Electric Windlass with Lower helm and Flybridge controls - 2002

Northern Lights 8kW generator with sound shield, dedicated battery, and thru-hull strainer - 2002

JRC 3000 Raster Scan Radar - 2002

120 Volt seawater washdown at anchor platform - 2003

Vetus Bow Thruster dual with dual controls (upper and lower helm) - 2003

Lower helm seat widened - 2005

Engine injectors cleaned and adjusted in 2011

Marine Air 16,000 BTU air conditioning system- 2013

New thru-hull sea strainer and raw water pump - 2013

Marine Survey conducted by BoatUS in 2015 - minor issues identified and corrected

New horizontal mounted propane tank with regulator and overfill prevention device - 2016

Engine exhaust elbow, heat exchangers, and hoses replaced in 2018

Saloon table and entire cabin sole refinished - 2018

New blue canvas for stern deck bimini, bridge cover, and dodgers - 2020

Garmin GPS Map model 1242xsv Plus with 12-inch screen - 2020

Grand Banks 32 Standard Equipment List

Mechanical Equipment

Drip pan under engine

Fuel-water separating filters

Seawater cooled exhaust system

Engine raw water intake strainer

Stainless steel propeller shaft

Bronze propeller - 4 bladed

Bronze stern gland with rubber bearing

Fuel tanks: original black iron replaced with aluminum, baffled

Water tank: aluminum

Seacocks on thru-hulls below waterline

Manual bilge pump

Freshwater outlets: engine room and aft deck

Dual station throttle and gear shift controls

Mechanical steering: chain and cable

Electrical Equipment

Two heavy-duty marine batteries in fiberglass boxes

Alternator: 70 Amps

Battery selector switch

Circuit breakers on all circuits

Alarm Panel at Upper and Lower Helms: engine oil pressure, engine temperature, gearbox temperature

Automatic bilge pump: 12V DC

Bilge pump indicator light

Complete instrumentation: Upper and Lower Helm

Interior lighting: 12V DC

Engine Room lights: 12V DC

Navigation lights: 12V DC

Spreader lights on mast: 12V DC

Windshield wipers with washer: 12V DC

Pressure fresh water system: 12V DC

Galley exhaust blower: 12V DC

Engine Room blower: 12V DC

GB icebox with 12V DC refrigerator/freezer

12 Volt DC outlets at Upper and Lower Helm

Bonding system

40 Amp automatic battery charger

AC shore power inlets: bow and stern

Reverse polarity indicator light

Ground fault interrupt circuit

AC outlets throughout

Hot water heater

Exterior Equipment

Gelcoated fiberglass exterior

Teak anchor platform with stainless steel pulpit

Fiberglass anchor windlass locker

Anchor chain locker

Teak decking: flybridge and main deck

Teak steering wheel with stainless steel rim at Upper Helm Station

Teak bulwark cap rail

Stainless steel safety rails

Rail gates: port, starboard, and transom

Teak name and hailport boards

Teak navigation light boards

Teak bow and stern staffs

Flagstaff holders: bow and stern

Teak scrolls

Teak transom boarding steps

Teak swim platform

Teak gratings: Lazarette, and under Flybridge seats

Aluminum mast and boom: hinged

Stainless steel safety rails on flybridge

Stainless steel stanchions

Stainless steel grab rails

Stainless steel chocks and mooring cleats

Chrome deck fillers: diesel fuel

Chrome deck fitting for waste pump-out

Center opening windshield

Chrome Grand Banks Step plates: port, starboard, transom

Flybridge windshields

Flybridge seats and cushions

Compass at Upper Helm

Electronics locker on Flybridge

Air horn

Fuel and water tank vents

Engine room vents on saloon housesides

Lewmar Skylight hatch in forward stateroom

Hinged Lazarette hatches

Hot and cold shower at transom

Laminated safety glass in all windows

Interior Equipment

Teak parquet cabin sole throughout

Drapes and teak valances throughout

Mattresses: 6" foam

V-berths forward with filler

Hanging locker forward

Marine toilet

Holding tank with macerator

Teak towel rack and toothbrush holder

Shower with drain pump

L-Settee in main saloon

Straight settee with pull out double berth in saloon

Teak yacht table

Dry bar cabinet

Teak handrail on saloon overhead

Teak overhead electronics locker

Stainless steel galley sink

Single lever faucet in galley

Galley sink cover with teak cutting board

Gas range with oven

LPG control panel

Overhead condiment locker

Teak dish locker with adjustable shelves

Fixed bench helm seat

Teak steering wheel

Compass at Lower Helm

Teak grating in engine room

Bronze ball valves on thru-hulls above waterline

Navigation Equipment

JRC 3000 Raster Scan radar - mast-mounted

Garmin GPS Map Model 1242xsv plus chart plotter

Robertson AP 200DL autopilot - lower helm and flybridge controls

(2) VHF radios - lower helm and flybridge

Additional Mechanical Equipment

Ford Lehman 135 hp diesel engine

Borg Warner transmission with 2.5.1 ratio

Extensive spare parts kit for main engine

12-volt fuel transfer pump (between tanks)

Emergency tiller

Engine service and Parts Manual, various manuals for onboard equipment

Additional Electrical Equipment

Northern Lights 8 kW generator with sound shield

16,000 Marine Air heat and air conditioning system

30 Amp shore cable and adapters

110V shop vacuum

50 ft extension cord

12V handheld floor light with connections on flybridge and stern deck

Additional Hull and Deck Equipment

35-pound plow anchor with 150' chain and 200' of 2" rope

150' of spare anchor rode and connection chain

Electric Windlass - dual controls

Vetus bow thruster with dual controls

(2) spare anchors with rode (30 lb Danforth, Wreck anchor)

(2) Saxon and Wakefield folding teak deck chairs and table

Kite shade awning in oyster white for shading forward deckhouse and forward hatch

Hoisting Kit to transfer heavy objects from dock to deck

Newport stainless steel propane grill with cutting board

Three stainless steel rod holders

Spare dock lines and fenders

Folding swim ladder

Freshwater filter for water tank filling, with spare filter

Canvas: Bridge cover and bimini, aft deck bimini, dodgers on Flybridge, Kite awning for forward cabin/hatch

Spare Parts Kit for Engine

Freshwater pump and gasket

Starter

Fuel lift pump

Injection pipes (1 set)

Thermostat and thermostat gasket

Valve cover gasket

Fuel filter element

Raw water pump gasket

Water outlet gasket

Rear manifold gasket

Air filter element

Vee belt

Expansion tank cap

Transmission oil cooler

Engine oil cooler

Expandable plug

Zinc element (5)

Zinc pencil

Heat exchanger gasket

65 amp alternator

Oil filter element

Hose molded elbows - 1" and 1-3/4"

Oil line - 1/2" BSP

Hose header to tank

Fuel supply line

Impeller for 3/4" pump

Jabsco kit

Accommodations

The Grand Banks 32 Sedan has an ample aft deck with a door into the saloon. Entering the

saloon, there is an "L" settee and teak yacht table to starboard, opposite is a straight settee, which slides out to a double berth. Forward of the main settee, there is a dry bar cabinet with drawers just aft of the helm seat. The lower helm has a teak Grand Banks wheel, overhead electronics locker, and updated navigation equipment. Forward of the straight settee on the port side is the galley with a 3 burner Princess gas stove and oven, stainless steel cold box and sink, refrigerator, and ample storage in upper and lower cabinets. The companionway to the head and forward cabin is amidships between the Galley and Lower Helm. The head with shower is to starboard with a hanging locker and storage opposite. The forward stateroom has an ample V-berth, and there is a door to separate the forward stateroom from the main saloon. Access to the flybridge is via a ladder on the aft deck, next to port of the aft saloon door. The flybridge has a fully equipped Upper Helm station and seating for 6 on bench seats with storage beneath them. One can view 360 degrees from either the flybridge or from the main saloon through large, opening windows. Access to the engine room is through the saloon cabin sole.

Исключения

При продаже яхты исключаются личные вещи владельца.

Отказ от ответственности

Компания предоставляет описание судна или яхты добросовестно, но не может гарантировать точность этой информации, а также не ручается за техническое состояние. Покупатель должен проинструктировать своих агентов или оценщиков исследовать представленную информацию более подробно, по собственному желанию. Продажа судна или яхты, изменение цены или снятие с продажи будет происходить без предварительного уведомления.

ФОТОГРАФИИ

Grand Banks 32 Dulcinea



Dulcinea outside covered storage shed



New canvas main deck bimini, flybridge cover and dodgers



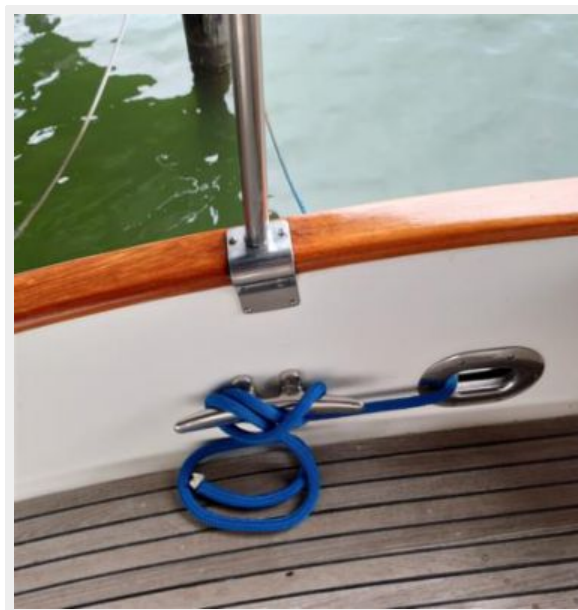
Teak decks and anchor platform, anchor windlass and wash down



Lofrans anchor windlass



Varnished cap rail, stainless steel deck fittings



Teak deck and cap rail in very good condition



Stainless steel hawse pipes and cleats



Lazarette with teak grate



Exterior window frames



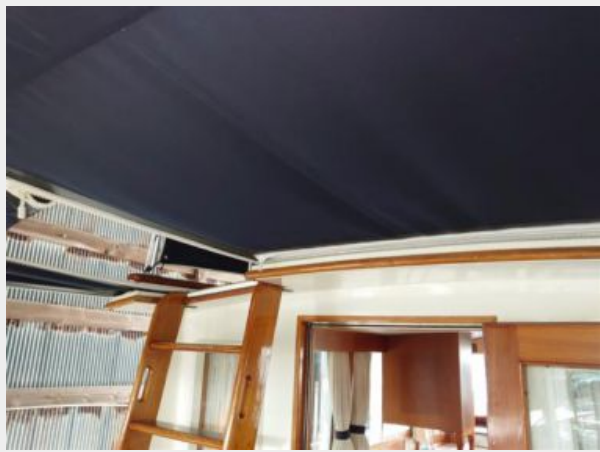
Exterior varnish and Gelcoat



Aft deck with teak sole, fybridge ladder, gelcoated transom, teak swim platform



Aft deck cover with Flybridge access



Ladder to flybridge deck



Upper Helm Station with electronics locker



Teak Grand Banks wheel with stainless steel rim



Upper Helm Vetus Bpw Thruster controls



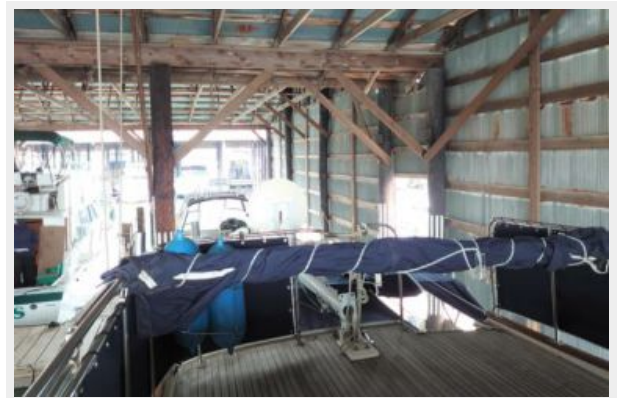
Datamarine Depth and Speed displays at Upper Helm



Electronics locker at Upper Helm with Apelco VHF radio and Robertson Auto Pilot controls



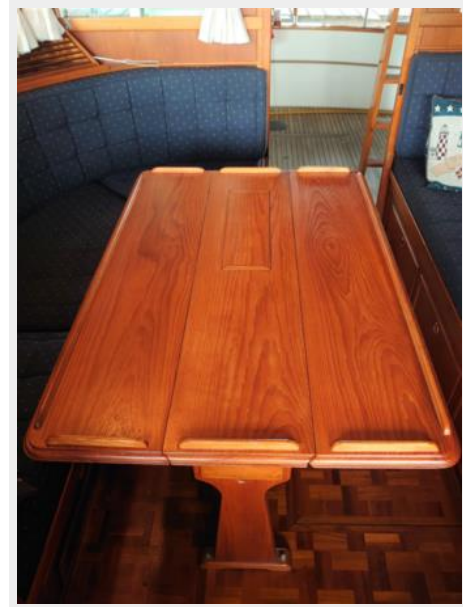
Flybridge deck: mast and bimini fold easily for indoor storage



Main Saloon with drop leaf teak yacht table



Teak yacht table, parquet cabin sole



Starboard side L settee: fabrics in excellent condition, heat and ac vents



Portside settee, looking forward



Port settee looking aft



Refinished cabin sole



Lower helm station with electronics locker above



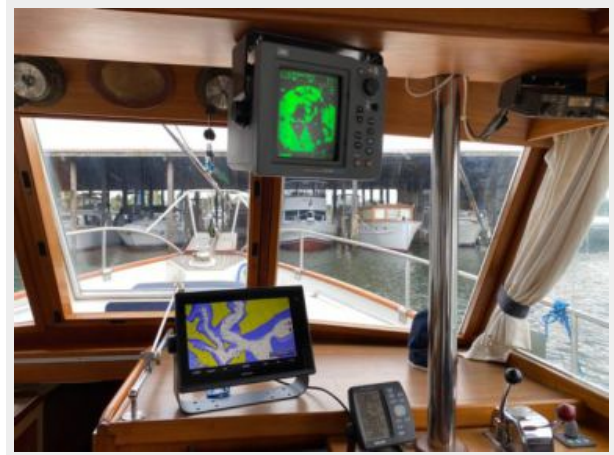
Lower Helm Station



Lower Helm engine and bow thruster controls



Garmin 1242xsv and JRC 1000 Radar at Lower Helm



Raster Scan JRC 1000 Radar



Garmin GPS at Lower Helm



LPG Control Panel over head at Lower Helm



Extended helm seat



AC/DC Control Panel at Lower Helm



Lower Helm seat: widened to a double helm seat



Drawer storage aft of Lower Helm seat



Galley with Princess range, 12V refrigerator/freezer, stainless steel sink



3 burner propane Princess stove with oven



Grunert stainless steel icebox



Forward stateroom V berth with storage beneath



Head with teak trim, opening window, shower



Head with stainless steel sink, Formica countertop



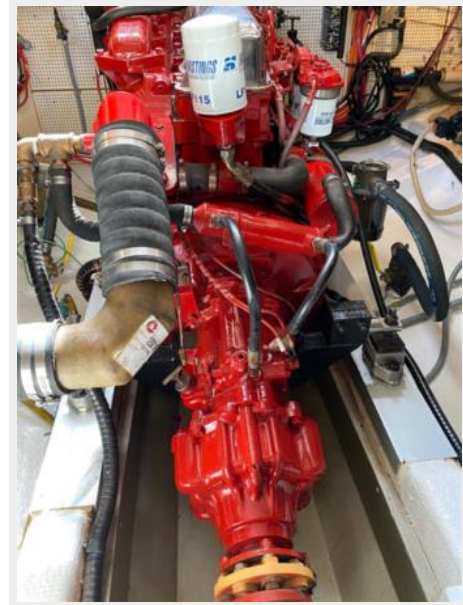
Head with teak cabinet doors and trim, teak grating on sole and in shower



Marine toilet: no leaks here!



Ford Lehman 135 hp engine



Ford Lehman engine, Groco strainers



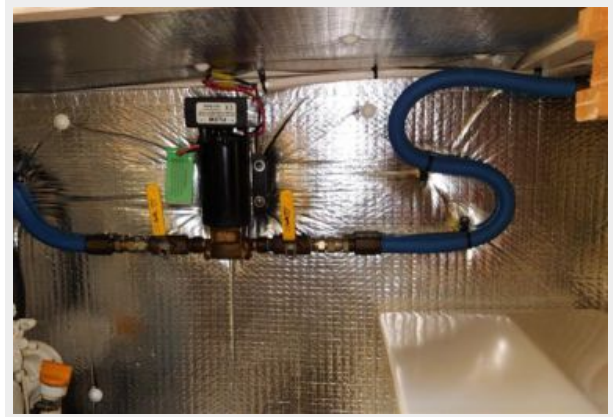
Engine: New exhaust elbow



Northern Lights 8kW generator, teak grating in engine room, fiberglass battery box



Generator sound shield, fuel transfer pump



Imtra Windlass Control Box mounted in Engine Room



Northern Lights 8 kW generator



Generator: dual Racor filters, exhaust, muffler

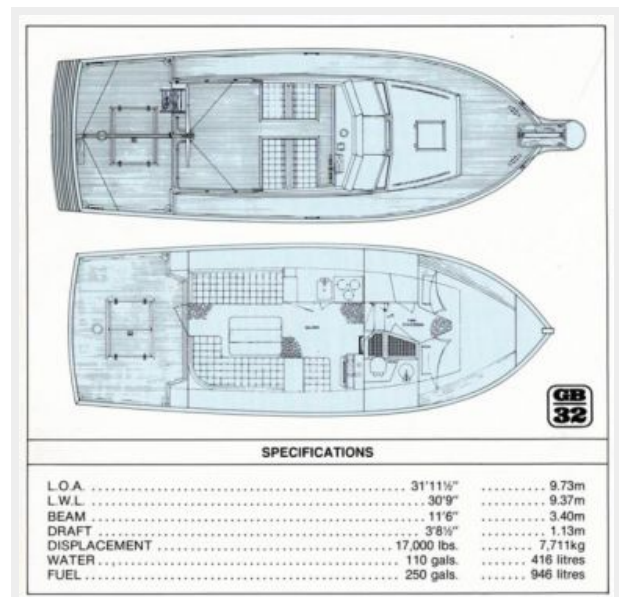
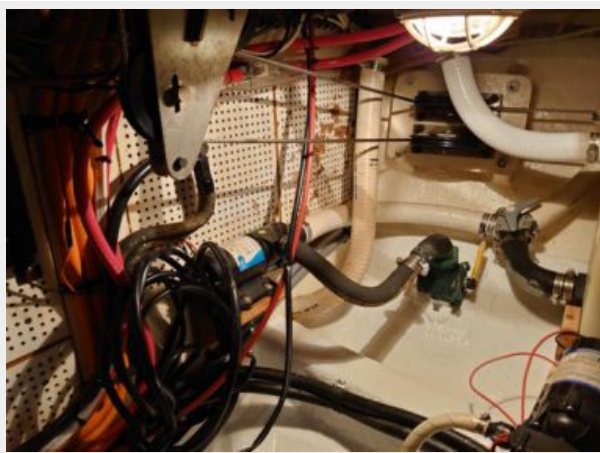


Engine: Groco raw water strainer



Grand Banks 32 Sedan Layout

Cable steering gear, Y valve, macerator



КОНТАКТЫ

Андрей Шестаков (Andrey Shestakov) – ведущий яхтенный брокер отдела продаж яхт и судов компании Shestakov Yacht Sales Inc. Официальный представитель Shestakov Yacht Sales Inc. для русскоговорящих клиентов в центральном офисе компании в Майами/Форт Лодердейл/Флорида/США.

Контактная информация

Email: andrey@shestakovyachtsales.com

Web: shestakovyachtsales.com

Телефоны

Краснодарский край: **+7(918)465-66-44**

США, Майами, Флорида: **+1(954)274-4435**

Время работы

Понедельник – Суббота: **9:00 - 21:00**
EDT

Воскресенье: **Закрето**

Адрес



Harbour Towne Marina, 850 NE 3rd St,
STE 213, Dania, FL 33004