

SANIBEL BREEZE — DYNA



Builder: DYNA

LOA: 46' 0" (14.02m)

Year Built: 1988

Beam: 16' 5" (5.00m)

Model: Motor Yacht

Price: PRICE ON APPLICATION

Location: United States

Our experienced yacht broker, Andrey Shestakov, will help you choose and buy a yacht that best suits your needs **SANIBEL BREEZE — DYNA** from our catalogue. Presently, at Shestakov Yacht Sales Inc., we have a wide variety of yachts available on our sale's list. We also work in close contact with all the big yacht manufacturers from all over the world.

If you would like to buy a yacht **SANIBEL BREEZE — DYNA** or would like help answering any questions concerning purchasing, selling or chartering a yacht, please call **+1(954)274-4435**

TABLE OF CONTENTS

TABLE OF CONTENTS	2
SPECIFICATIONS	5
Overview	5
Basic Information	6
Dimensions	6
Speed, Capacities and Weight	6
Accommodations	6
Hull and Deck Information	6
Engine Information	6
PHOTOS	7
7605342_20200927092839320_1_XLARGE	7
7605342_20200927092834636_1_XLARGE	7
7605342_20200927093517299_1_XLARGE	7
7605342_20200927092830123_1_XLARGE	7
7605342_20200927092159182_1_XLARGE	7
7605342_20200927093519292_1_XLARGE	7
7605342_20200927092203981_1_XLARGE	8
7605342_20200927092218632_1_XLARGE	8
7605342_20200927092223174_1_XLARGE	8
7605342_20200927092314473_1_XLARGE	8
7605342_20200927092227136_1_XLARGE	8
7605342_20200927092326780_1_XLARGE	8
7605342_20200927092243232_1_XLARGE	9
7605342_20200927092304556_1_XLARGE	9
7605342_20200927092346838_1_XLARGE	9
7605342_20200927092352002_1_XLARGE	9
7605342_20200927092259183_1_XLARGE	9
7605342_20200927092413198_1_XLARGE	9

7605342_20200927092611025_1_XLARGE	10
7605342_20200927092625824_1_XLARGE	10
7605342_20200927092552996_1_XLARGE	10
7605342_20200927092615458_1_XLARGE	10
7605342_20200927092522035_1_XLARGE	10
7605342_20200927092526905_1_XLARGE	10
7605342_20200927092417992_1_XLARGE	11
7605342_20200927093522321_1_XLARGE	11
7605342_20200929121038011_1_XLARGE	11
7605342_20200927092422303_1_XLARGE	11
7605342_20200927092427129_1_XLARGE	11
7605342_20200927092432259_1_XLARGE	11
7605342_20200927092445393_1_XLARGE	12
7605342_20200927092459310_1_XLARGE	12
7605342_20200927092440985_1_XLARGE	12
7605342_20200927093541558_1_XLARGE	12
7605342_20200927092231096_1_XLARGE	13
7605342_20200927092642060_1_XLARGE	13
7605342_20200927092701861_1_XLARGE	13
7605342_20200927092706075_1_XLARGE	13
7605342_20200927092711407_1_XLARGE	14
7605342_20200927092716306_1_XLARGE	14
7605342_20200927092732578_1_XLARGE	14
7605342_20200927092754201_1_XLARGE	14
7605342_20200927092806153_1_XLARGE	14
7605342_20200927092813847_1_XLARGE	14
7605342_20200927093526403_1_XLARGE	15
7605342_20200927093528297_1_XLARGE	15
7605342_20200927093531328_1_XLARGE	15

7605342_20200927093529316_1_XLARGE	15
7605342_20200928085259242_1_XLARGE	15
CONTACTS	16
Contact details	16
Telephones	16
Office hours	16
Address	16

SPECIFICATIONS

Overview

Ready to Cruise in "Champagne Class"?

Imagine owning this elegant, DynaCraft Custom Motor Yacht with a uniquely distinctive lineage.

This vessel was originally designed and masterfully built in Taiwan for the **Dom Perignon company**. So one can easily say it was **the "Champagne Class" of custom motor yachts**.

Today, its even more appealing - *tastefully and meticulously redecorated* by its current owners.

Features and amenities include:

- Room for all! At 46ft long & 16.5ft wide, there's ample space for a comfortable live-aboard or family guest entertaining - including aft deck covered seating and a rich, wood-trimmed main salon that sparkles in daylight or evening blue mood lighting.
- Want a view from above? Treat yourself to a spacious flybridge where you can navigate and entertain with the wind in your hair, or in enclosed comfort.
- A well-equipped, classically wood-trimmed helm makes your captain feel like an admiral and provides the gear, including a Garmin GPSMAP 8400/8600 for safe and secure navigation.
- Love to entertain? A radio-blue tooth system on all levels - bridge, entire cabin and aft sets the mood for a relaxing time on the open water or at dockside.
- A gourmet chefs galley is lavishly but functionally equipped with an apartment-sized refrigerator/freezer, induction range, oven, and trash compactor - a must for a live-aboard.
- Your master queen suite will bring "oohs and aah" from you each time you enter, an elegant, haven after a long day with ensuite head/shower and plenty of storage closets and drawers.
- Your guests will also luxuriate with their private forward cabin featuring queen berth and ensuite head with roomy shower.
- A sturdy, sea worthy Deep Vee Hull and twin Fiat Iveco Diesels provide smooth and safe passage for all.
- Bottom of boat newly painted (Aug 2020)

You'll be dazzled when you see this classic...from its champagne heritage to its modern day refinements.

Serious inquiries only, please.

Basic Information

Category: Motor Yacht

Model Year: 1988

Year Built: 1988

Country: United States

Dimensions

LOA: 46' 0" (14.02m)

Beam: 16' 5" (5.00m)

Speed, Capacities and Weight

Displacement: 36000 Pounds

Water Capacity: 125 Gallons

Holding Tank: 40 Gallons

Fuel Capacity: 450 Gallons

Accommodations

Total Cabins: 2

Hull and Deck Information

Hull Material: Fiberglass

Engine Information

Engines: 2

Manufacturer: Fiat

Model: Iveco

Engine Type: Inboard

Fuel Type: Diesel

PHOTOS

7605342_20200927092839320_1_XLARGE



7605342_20200927092834636_1_XLARGE



7605342_20200927092830123_1_XLARGE



7605342_20200927093517299_1_XLARGE



7605342_20200927093519292_1_XLARGE



7605342_20200927092159182_1_XLARGE



7605342_20200927092203981_1_XLARGE



7605342_20200927092218632_1_XLARGE



7605342_20200927092223174_1_XLARGE



7605342_20200927092314473_1_XLARGE



7605342_20200927092227136_1_XLARGE

7605342_20200927092326780_1_XLARGE



7605342_20200927092243232_1_XLARGE



7605342_20200927092304556_1_XLARGE



7605342_20200927092346838_1_XLARGE



7605342_20200927092352002_1_XLARGE



7605342_20200927092259183_1_XLARGE

7605342_20200927092413198_1_XLARGE



7605342_20200927092611025_1_XLARGE

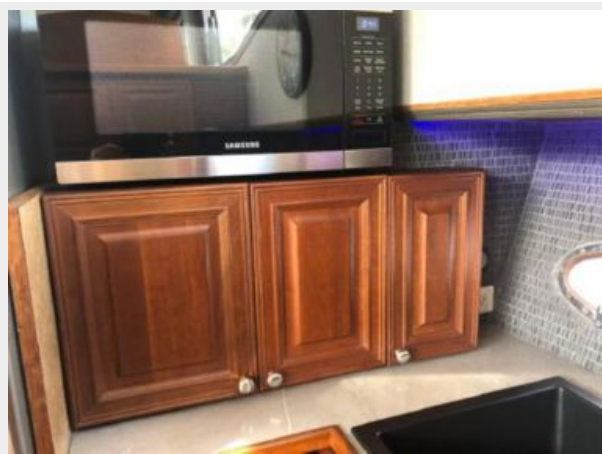


7605342_20200927092625824_1_XLARGE

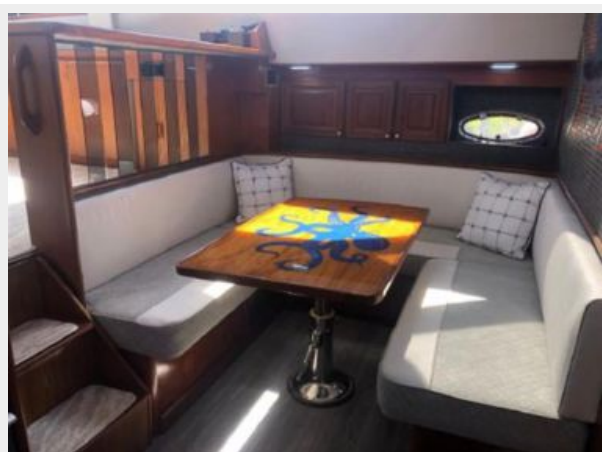


7605342_20200927092552996_1_XLARGE

7605342_20200927092615458_1_XLARGE



7605342_20200927092522035_1_XLARGE



7605342_20200927092526905_1_XLARGE



7605342_20200927092417992_1_XLARGE



7605342_20200927093522321_1_XLARGE



7605342_20200929121038011_1_XLARGE

7605342_20200927092422303_1_XLARGE



7605342_20200927092427129_1_XLARGE



7605342_20200927092432259_1_XLARGE



7605342_20200927092445393_1_XLARGE



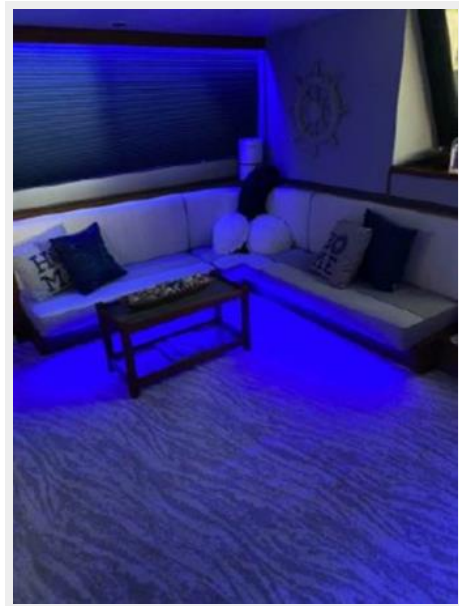
7605342_20200927092459310_1_XLARGE



7605342_20200927092440985_1_XLARGE



7605342_20200927093541558_1_XLARGE



7605342_20200927092231096_1_XLARGE



7605342_20200927092642060_1_XLARGE



7605342_20200927092701861_1_XLARGE



7605342_20200927092706075_1_XLARGE



7605342_20200927092711407_1_XLARGE



7605342_20200927092716306_1_XLARGE



7605342_20200927092732578_1_XLARGE



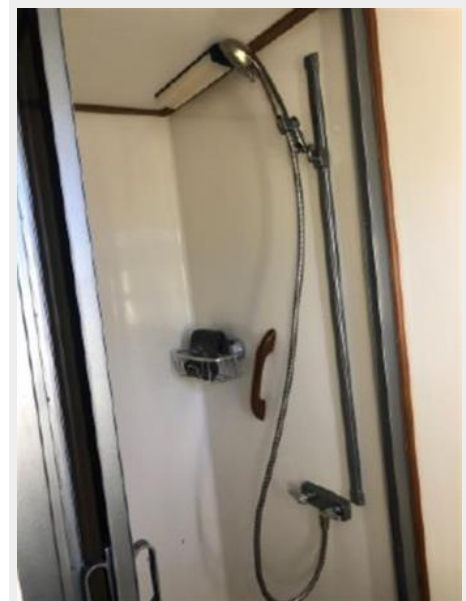
7605342_20200927092754201_1_XLARGE



7605342_20200927092806153_1_XLARGE



7605342_20200927092813847_1_XLARGE



7605342_20200927093526403_1_XLARGE



7605342_20200927093528297_1_XLARGE



7605342_20200927093531328_1_XLARGE

7605342_20200927093529316_1_XLARGE



7605342_20200928085259242_1_XLARGE



CONTACTS

Andrey Shestakov, leading yacht broker of the sales department of Shestakov Yacht Sales Inc. Shestakov Yacht Sales Inc., the official representative of the Miami/Fort Lauderdale FL headquarters.

Contact details

Email: andrey@shestakovyachtsales.com

Web: shestakovyachtsales.com/en/

Telephones

USA: +1(954)274-4435

Office hours

Monday – Saturday: **9:00 - 21:00** EDT

Sunday: **closed**

Address



Harbour Towne Marina, 850 NE 3rd St,
STE 213, Dania, FL 33004