

TRUE NORTH — STAMAS



Builder: STAMAS

Year Built: 1984

Model: Cruising Ketch

Price: PRICE ON APPLICATION

Location: United States

LOA: 44' 0" (13.41m)

Beam: 14' 0" (4.27m)

Max Draft: 5' 0" (1.52m)

Cruise Speed: 7 Kts. (8 MPH)

Max Speed: 8 Kts. (9 MPH)

Our experienced yacht broker, Andrey Shestakov, will help you choose and buy a yacht that best suits your needs **True North — STAMAS** from our catalogue. Presently, at Shestakov Yacht Sales Inc., we have a wide variety of yachts available on our sale's list. We also work in close contact with all the big yacht manufacturers from all over the world.

If you would like to buy a yacht **True North — STAMAS** or would like help answering any questions concerning purchasing, selling or chartering a yacht, please call **+1(954)274-4435**

TABLE OF CONTENTS

TABLE OF CONTENTS	2
SPECIFICATIONS	6
Overview	6
Basic Information	7
Dimensions	7
Speed, Capacities and Weight	7
Accommodations	7
Hull and Deck Information	7
Engine Information	8
DETAILED INFORMATION	9
Overview	9
Exclusions	10
Disclaimer	10
PHOTOS	11
2	11
3	11
4	11
5	11
6	11
7	11
8	11
9	11
10	12
11	12
13	12
12	12
14	12
15	12

16	13
17	13
18	13
19	13
20	13
21	13
23	14
22	14
24	14
25	14
26	15
27	15
28	15
29	15
30	16
31	16
32	16
33	16
34	17
35	17
36	17
37	17
38	17
39	17
40	18
41	18
42	18
43	18
44	19

45	19
47	19
46	19
48	20
49	20
50	20
51	20
52	21
53	21
54	21
55	21
57	22
56	22
58	22
59	22
61	23
60	23
62	23
63	23
65	24
64	24
66	24
67	24
69	25
68	25
70	25
71	25
CONTACTS	26
Contact details	26

Telephones	26
Office hours	26
Address	26

SPECIFICATIONS

Overview

RARE FIND - SOLID BLUEWATER KETCH - GO ANYWHERE (ESCAPE) SAFELY JUST REDUCED \$5k (7/29/2020) - GREAT VALUE, EXTENSIVE UPGRADES Only 22 of these robust hulls were built. The Stamas 44 has the space below and engine room of a trawler but the seaworthiness of an offshore ketch-rigged cruiser. With a 35,000lb displacement and a modified full keel she's ready for the task at hand. Live comfortably at anchor and feel good about making those passages in safety. You won't get this opportunity often to get such a capable boat, with these features in this price range. The current owners have lovingly cared for this boat inside and out and made many recent upgrades making it the best cruising boat value on the market. Pack your bag and take off for distant lands! Please see below for full list of upgrades and equipment. note: This is a developing listing being continually updated so please check back for more details. True North Upgrades

1. 2019 Dickenson 3 burner propane Mediterranean stove with oven and broiler
2. 2019 Isotherm 12 volt refrigeration unit for refrigeration and freezer in countertop
3. New eisenglass for cockpit enclosure
4. 2018 Selden Mast with in mast furler, boom and rigid boom vang
5. 2018 Harken furler with new 30% Doyle Genoa
6. 2018 All new standing rigging
7. 2018 New forward running rigging
8. 2018 New Garmin windvane
9. 2018 Spade anchor with 150 feet of 3/8 chain plus nylon rode
10. 2018 50 feet of 3/8 anchor chain with nylon rode for Danforth anchor
11. 2018 New Mattress in aft berth with froli system underneath
12. 2018 New foam in settee cushions and V-berth
13. 2018 Teak swim platform and swim ladder added to stern
14. 2017 Garmin 7607 xsv Chartplotter at binnacle
15. 2017 Garmin XHD Radar
16. 2017 Raymarine Autopilot
17. 2017 Standard Horizon VHF Matrix AIS/GPS with handheld at binnacle
18. 2017 3 -150 watt Kyocera Solar Panels and a 160 watt solarland panel added in 2019
19. 2017 MPPT 100-150 Victron Energy Blue Solar Charger/controller
20. 2017 Magnasine Energy Inverter Charger
21. 2017 Vitrifrigo 4 cu ft under counter refrigerator freezer 12 volt
22. 2017 All new life lines and protective netting
23. 2017 Perkins 4-154 motor was refurbished
24. 2015 Phasor Generator 7.5 kw with Kubota Diesel engine
25. 2015 New Main Sail from Peak Sails

26. 2013 Mercury 8 ft. Dinghy 2018 Dinghy chaps made
27. 2013 6 hp Mercury 4 stroke engine scan

Basic Information

Category: Cruising Ketch

Model Year: 1984

Year Built: 1984

Country: United States

Dimensions

LOA: 44' 0" (13.41m)

LWL: 33' 0" (10.06m)

Beam: 14' 0" (4.27m)

Max Draft: 5' 0" (1.52m)

Clearance: 61' 5" (18.72m)

MFG Length: 44' 0" (13.41m)

Speed, Capacities and Weight

Cruise Speed: 7 Kts. (8 MPH)

Max Speed: 8 Kts. (9 MPH)

Displacement: 35000 Pounds

Water Capacity: 308 Gallons

Fuel Capacity: 170 Gallons

Accommodations

Total Cabins: 2

Total Berths: 2

Total Heads: 2

Hull and Deck Information

Hull Material: Fiberglass

Engine Information

Engines: 1

Manufacturer: Perkins

Model: 4154

Engine Type: Inboard

Fuel Type: Diesel

DETAILED INFORMATION

Overview

Electronics

- Depthsounder
- Log-speedometer
- Wind speed and direction
- Navigation center
- Plotter
- Autopilot
- Compass
- GPS
- VHF
- Radar
- TV set
- Radio
- CD player
- Cockpit speakers

Sails

- Battened mainsail
- Furling mainsail
- Furling genoa

Rigging

- Steering wheel
- Electric winch

Inside Equipment

- Electric bilge pump
- Manual bilge pump
- Battery charger
- Air conditioning
- Heating
- Hot water
- Oven
- Microwave oven
- Marine head

- Refrigerator
- Deep freezer

Electrical Equipment

- Shore power inlet
- Generator
- Inverter
- Electrical Circuit: 12V

Outside Equipment/Extras

- Teak cockpit
- Solar panel
- Cockpit cushions
- Cockpit table
- Swimming ladder
- Outboard engine brackets
- Davits
- Tender
- Electric windlass

Covers

- Bimini Top
- Spray hood

Exclusions

Owner's personal belongings.

Disclaimer

The Company offers the details of this vessel or yacht in good faith but cannot guarantee or warrant the accuracy of this information nor warrant the condition of the vessel. A buyer should instruct his representatives, agents, or his surveyors, to investigate such details as the buyer desires validated. This vessel or yacht is offered subject to prior sale, price change, or withdrawal without notice.

PHOTOS

2



3



4



5



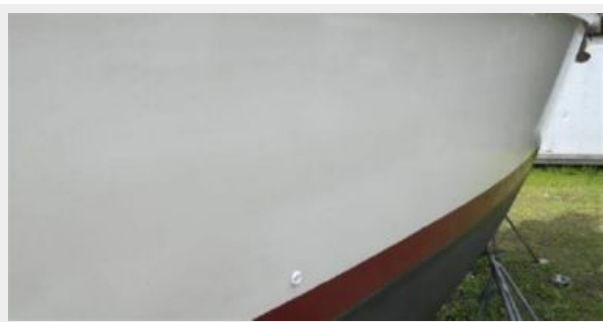
6



7



8



9



10



11



13



12



14



15



16



17



18



19



20



21



22



23



24



25



26



27



28



29



30



31



32



33



34



35



36



37



38



39



40



41



42



43



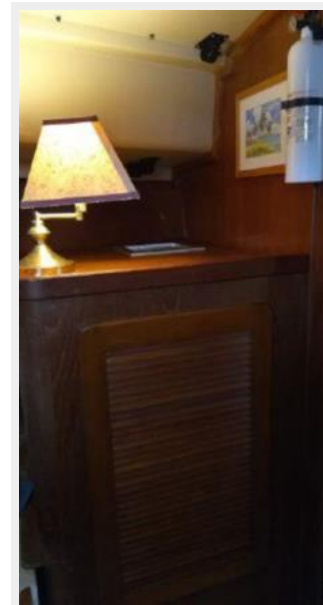
44



45



47



46



48



49



50



51



52



53



54



55



56



57



58



59



60



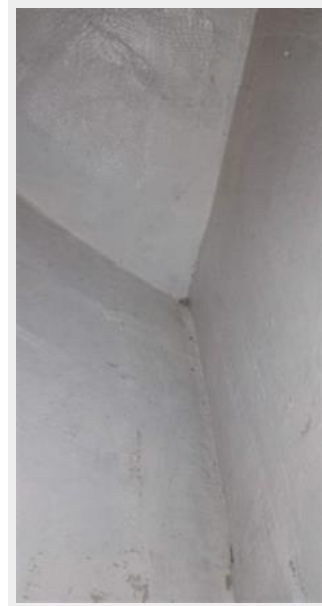
61



62



63



64



65



66



67



68



69



70



71



CONTACTS

Andrey Shestakov, leading yacht broker of the sales department of Shestakov Yacht Sales Inc. Shestakov Yacht Sales Inc., the official representative of the Miami/Fort Lauderdale FL headquarters.

Contact details

Email: andrey@shestakovyachtsales.com

Web: shestakovyachtsales.com/en/

Telephones

USA: +1(954)274-4435

Office hours

Monday – Saturday: **9:00 - 21:00** EDT

Sunday: **closed**

Address



Harbour Towne Marina, 850 NE 3rd St,
STE 213, Dania, FL 33004