

## DESTINY — MERRITT BOAT WORKS



**Builder:** MERRITT BOAT WORKS

**Year Built:** 2011

**Model:** Sport Fisherman

**Price:** PRICE ON APPLICATION

**LOA:** 86' (26.21mm)

**Beam:** 21

**Max Draft:** 5' 8" (1.73mm)

**Cruise Speed:** 30 Knots Kts. (35 MPH)

**Max Speed:** 38 Knots Kts. (44 MPH)

Our experienced yacht broker, Andrey Shestakov, will help you choose and buy a yacht that best suits your needs **DESTINY — MERRITT BOAT WORKS** from our catalogue. Presently, at **Shestakov Yacht Sales Inc.**, we have a wide variety of yachts available on our sale's list. We also work in close contact with all the big **yacht manufacturers** from all over the world.

If you would like to buy a yacht **DESTINY — MERRITT BOAT WORKS** or would like help answering any questions concerning purchasing, selling or chartering a yacht, please call **+1(954)274-4435**

# TABLE OF CONTENTS

TABLE OF CONTENTS	2
SPECIFICATIONS	4
Overview	4
Basic Information	4
Dimensions	4
Speed, Capacities and Weight	4
Accommodations	5
Hull and Deck Information	5
Engine Information	5
PHOTOS	6
Salon - looking forward to Galley/Dinette	6
Salon - Entertainment Center to Port	6
Salon - looking aft from Galley/Dinette	6
Companionway - looking aft	6
Companionway - looking forward	6
Companionway	6
Master Stateroom - Port	7
Master Stateroom	7
Master Bath	7
Master Bath	7
VIP Stateroom - Forward	7
VIP Bath	7
Crew/Guest Stateroom - Port	8
Enclosed Bridge Helm	8
Enclosed Bridge Helm	8
Cockpit	8
Fighting Chair / Cockpit	8
Cockpit / Mezzanine Merritt	8

---

Fighting Chair	9
Cockpit - view from Bridge	9
Aft - View up to Tower	9
Ladder to Tower Aft	9
Aft Bridge	9
Aft Bridge Controls	9
Electrical Panels	10
Electric Room and Pantry	10
Engine Room	10
Engine Room	10
Engine Room	10
Engine Room	10
Engine Room	11
Engine Controls	11
CONTACTS	12
Contact details	12
Telephones	12
Office hours	12
Address	12

---

---

# SPECIFICATIONS

---

## Overview

---

**DESTINY** provides the ultimate in comfort and styling in a large, custom, enclosed bridge sportfishing yacht. Launched in 2011, she is the first in the 86' series and one of only two built with the enclosed bridge.

**DESTINY** has been kept under cover at Merritt's since new and lightly used, with only 550 hours on 2400 hp MTU engines.

**DESTINY** features three staterooms, each with ensuite head and shower, and separate crew quarters with ensuite head and shower accessible through the engine room and pump room.

**DESTINY** is the only Enclosed Bridge 86' on the market. This 86' Merritt currently available for purchase on the brokerage market and represents an outstanding opportunity!

## Basic Information

---

**Category:** Sport Fisherman

**Model Year:** 2011

**Year Built:** 2011

## Dimensions

---

**LOA:** 86' (26.21mm)

**Beam:** 21

**Max Draft:** 5' 8" (1.73mm)

## Speed, Capacities and Weight

---

**Cruise Speed:** 30 Knots Kts. (35 MPH) **Max Speed:** 38 Knots Kts. (44 MPH)

**Water Capacity:** 500 Gallons

**Holding Tank:** 185 Gal Gallons

**Fuel Capacity:** 3950 Gal Gallons

---

## Accommodations

---

**Total Cabins:** 4

**Total Heads:** 5

---

## Hull and Deck Information

---

**Hull Material:** Composite

**Hull Designer:** Merritt's Boat & Engine Works

**Exterior Designer:** Merritt's Boat & Engine Works

**Interior Designer:** Merritt's Boat & Engine Works

---

## Engine Information

---

**Engines:** 2

**Manufacturer:** MTU

**Engine Type:** Inboard

**Fuel Type:** Diesel

# PHOTOS

**Salon - looking forward to Galley/Dinette**



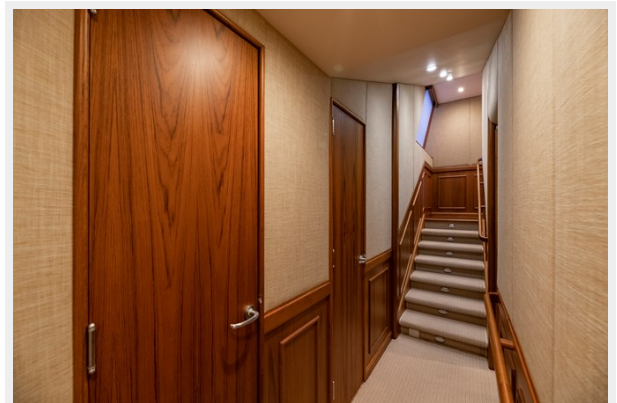
**Salon - Entertainment Center to Port**



**Salon - looking aft from Galley/Dinette**



**Companionway - looking aft**



**Companionway - looking forward**



**Companionway**





**Master Stateroom - Port**



**Master Stateroom**



**Master Bath**



**Master Bath**



**VIP Stateroom - Forward**



**VIP Bath**



### Crew/Guest Stateroom - Port



### Enclosed Bridge Helm



### Enclosed Bridge Helm



### Cockpit



### Fighting Chair / Cockpit



### Cockpit / Mezzanine Merritt





**Fighting Chair**



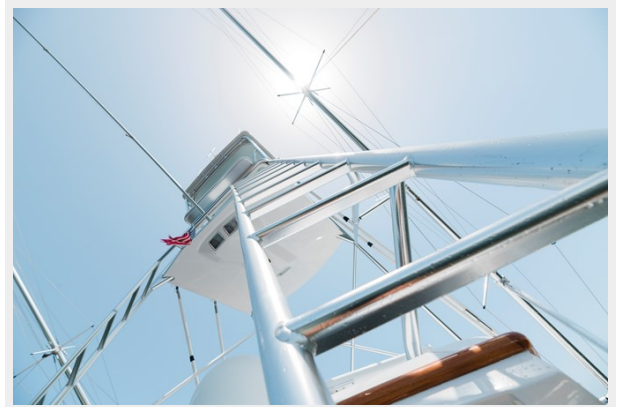
**Cockpit - view from Bridge**



**Aft - View up to Tower**



**Ladder to Tower Aft**



**Aft Bridge**



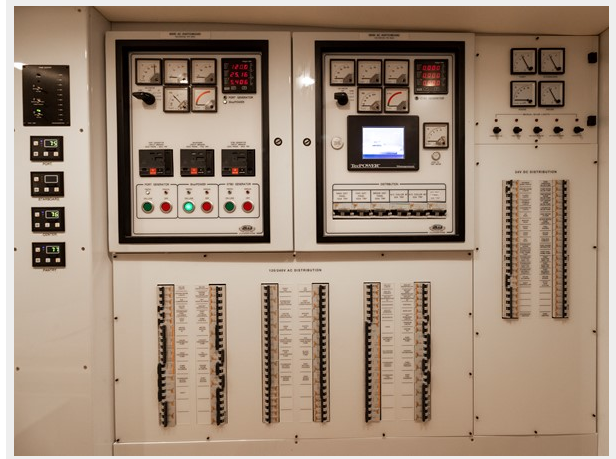
**Aft Bridge Controls**



### Electric Room and Pantry



### Electrical Panels



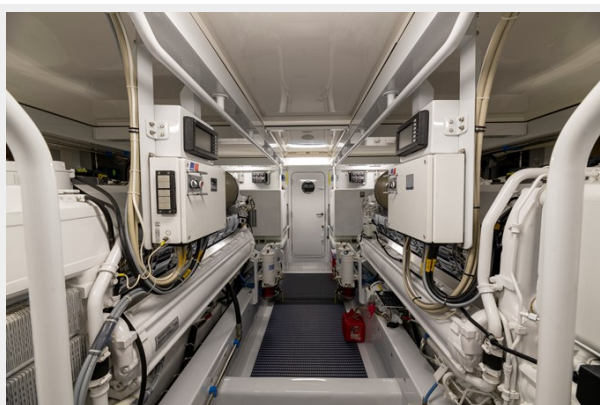
### Engine Room



### Engine Room



### Engine Room



### Engine Room





## Engine Room



## Engine Controls



# CONTACTS

---

Andrey Shestakov, leading yacht broker of the sales department of Shestakov Yacht Sales Inc. Shestakov Yacht Sales Inc., the official representative of the Miami/Fort Lauderdale FL headquarters.

## Contact details

---

Email: **andrey@shestakovyachtsales.com**

Web: [shestakovyachtsales.com/en/](https://shestakovyachtsales.com/en/)

## Telephones

---

USA: **+1(954)274-4435**

## Office hours

---

Monday – Saturday: **9:00 - 21:00** EDT

Sunday: **closed**

## Address

---



Harbour Towne Marina, 850 NE 3rd St, STE 213, Dania, FL 33004