

# LATITUDE — CONCORDE YACHTS, LTD



**Builder:** CONCORDE YACHTS, LTD

**Year Built:** 1991

**Model:** Cutter

**Price:** PRICE ON APPLICATION

**Location:** Italy

**LOA:** 131' 3" (40.01m)

**Beam:** 29' 6" (8.99m)

**Max Draft:** 9' 4" (2.84m)

**Cruise Speed:** 10 Kts. (12 MPH)

**Max Speed:** 12 Kts. (14 MPH)

Our experienced yacht broker, Andrey Shestakov, will help you choose and buy a yacht that best suits your needs **LATITUDE — CONCORDE YACHTS, LTD** from our catalogue. Presently, at Shestakov Yacht Sales Inc., we have a wide variety of yachts available on our sale's list. We also work in close contact with all the big yacht manufacturers from all over the world.

If you would like to buy a yacht **LATITUDE — CONCORDE YACHTS, LTD** or would like help answering any questions concerning purchasing, selling or chartering a yacht, please call **+1(954)274-4435**

# TABLE OF CONTENTS

TABLE OF CONTENTS	2
SPECIFICATIONS	5
Overview	5
Basic Information	5
Dimensions	5
Speed, Capacities and Weight	5
Accommodations	5
Hull and Deck Information	6
Engine Information	6
DETAILED INFORMATION	7
Accommodations	7
Entertainment	7
Galley	7
Electronics	7
Electrical	8
Additional	8
Tankage	8
Hydraulics	9
Deck	9
Sails and Rigging	9
Safety Gear	10
Exclusions	10
Disclaimer	10
PHOTOS	11
7449057_20200817044234164_1_XLARGE	11
7449057_20200817044237999_1_XLARGE	11
7449057_20200817044242214_1_XLARGE	11
7449057_20200515051559389_1_XLARGE	11

---

7449057_20200728052242398_1_XLARGE	11
7449057_20200512102837961_1_XLARGE	11
7449057_20200513143632386_1_XLARGE	12
7449057_20200512102821064_1_XLARGE	12
7449057_20200513143649328_1_XLARGE	12
7449057_20200512102930976_1_XLARGE	12
7449057_20200512102944739_1_XLARGE	12
7449057_20200512102957744_1_XLARGE	12
7449057_20200512112112292_1_XLARGE	13
7449057_20200512103022628_1_XLARGE	13
7449057_20200512103035649_1_XLARGE	13
7449057_20200512103127879_1_XLARGE	13
7449057_20200512103009786_1_XLARGE	13
7449057_20200512103108936_1_XLARGE	13
7449057_20200513143756782_1_XLARGE	14
7449057_20200513143813076_1_XLARGE	14
7449057_20200513143725135_1_XLARGE	14
7449057_20200513143742069_1_XLARGE	14
7449057_20200513145315676_1_XLARGE	14
7449057_20200512102918528_1_XLARGE	14
7449057_20200512102853087_1_XLARGE	15
7449057_20200512102845305_1_XLARGE	15
7449057_20200513143708780_1_XLARGE	15
7449057_20200512103116153_1_XLARGE	15
7449057_20200513143827444_1_XLARGE	15
7449057_20200513145432898_1_XLARGE	15
7449057_20200513143842425_1_XLARGE	16
7449057_20200513145602375_1_XLARGE	16
7449057_20200513145500704_1_XLARGE	16

---

---

7449057_20200513145417276_1_XLARGE	16
7449057_20200513145521000_1_XLARGE	16
7449057_20200515051548839_1_XLARGE	16
7449057_20200515051618689_1_XLARGE	17
7449057_20200515051532384_1_XLARGE	17
7449057_20200513145540529_1_XLARGE	17
7449057_20200513145302527_1_XLARGE	17
7449057_20200513145354402_1_XLARGE	17
CONTACTS	18
Contact details	18
Telephones	18
Office hours	18
Address	18

---

# SPECIFICATIONS

---

## Overview

---

**Latitude formally Mirabella** is a beautiful and majestic sailing yacht. She was built by Concorde Yachts in Thailand, the hull design and sail plan were designed by Bruce Farr and Pekka Koskenkyla. The interior is a design by Peter Sijm, she is spacious and luxuriously appointed in good taste. Launched in 1991 and she has undergone a refit in 2017. Her rig was recently taken out and inspected and upgraded. Her engine was replaced with a Mann D2876 450HP Diesel engine in 2017.

## Basic Information

---

**Category:** Cutter

**Model Year:** 1991

**Year Built:** 1991

**Country:** Italy

## Dimensions

---

**LOA:** 131' 3" (40.01m)

**Beam:** 29' 6" (8.99m)

**Max Draft:** 9' 4" (2.84m)

## Speed, Capacities and Weight

---

**Cruise Speed:** 10 Kts. (12 MPH)

**Cruise Speed Range:** 3500

**Max Speed:** 12 Kts. (14 MPH)

## Accommodations

---

**Total Cabins:** 9

**Total Berths:** 13

**Total Heads:** 10

---

## Hull and Deck Information

---

**Hull Material:** Composite

---

## Engine Information

---

**Engines:** 1

**Manufacturer:** MAN

**Model:** D2876

**Engine Type:** Inboard

---

# DETAILED INFORMATION

---

## Accommodations

---

- Six staterooms accommodating 12 guests
- Upper Salon
- Main Salon
- Owners office
- Exterior dining area
- Crew quarters for six crew members

## Entertainment

---

- 4 LED screens in 4 guest cabins, 2 in salon and 1 in crew cabin conference room
- Pep wave to connect with 4G
- DS video to stream the video collection on the disc station from your IOS mobile device
- Apple TV
- Sonos speakers in 4 guest cabins, salon, pilot house, aft deck and crew conference room.
- **Water Toys:** 6 Meter (19'8") Tender with rigid bottom with Evinrude e-tec 115HP outboard.
- Water skies, wake board, paddle board and donut

## Galley

---

- Large galley with ample working areas
- Electric 4 burner induction stove
- 2X Electric ovens
- Large 4 door refrigerator
- Ample food storage
- Microwave
- Dishwasher
- Wine cooler and small refrigerator in salon, Ice maker and smaller refrigerator in the cockpit.

## Electronics

---

- Raymarine Wind, speed and depth sounder
- Raymarine autopilot, GPS, Radar and AIS
- Furuno Radar, Satellite compass, BNWAS/SAT-C
- 2XFuruno VHF DSC, ICOM VHF and Simrad VHF
- VDO rudder angle indicator

- Simrad rudder angle indicator
- NavPC MaxSea s.w.
- Engine room camera and stern camera
- 2X EPIRB 400MHZ
- SART
- ICOM GMDSS VHF Marine transceiver (2017)
- ICOM VHF Handys w/private channels (2017)

---

## Electrical

---

- The Electrical system was rebuild in 2017 during the refit
- 2X Northern Lights 70KW generators M6414A rebuilt in 2017 (250 hours since rebuilt)
- 3PH Shore power isolation transformer
- Service battery bank 1400A w/100A inverter/charger
- Hydraulic battery bank 1400A w/2X3 PH charger
- Port Crank bank 24VDC 400A w/1X3 PH charger 100A
- Starboard Crank bank 24VDC 400A w/1X3 PH charger 100A
- Radio battery bank 24VDC200A w/1X3 PH charger 100A
- Air Horn with auto modes
- 24VDC LED interior and exterior lights
- Two chilled water air conditioning units total 84000 BTU with 18 air handlers
- HEM Water maker 480 L/Hr (126.8 gallons/Hr)
- Washer and dryer

---

## Additional

---

- Sewage Treatment plant: Tecnicmar ECOMAR70 new in 2017
- Tecma toilets (10) new in 2015
- Security: Consillium smoke/fire detection system new in 2017
- FM28 fixed fire extinguisher system
- Instamed alarm monitoring system for gray tanks, holding tank, deep bilges and navigation lights. new in 2017
- Engine room and aft deck camera
- DVZ seperation plant: Bilge water/oil separator with collection tank
- Compressor and dive compressor
- Alfa Laval MIB 303 separator
- Washer and dryer
- Watermaker

---

## Tankage

---



- Fuel Tanks port 7279 Liters, Center 3033 L, Starboard 7279 L, total usable capacity 14700 liters (3885 gallons)
- Day tank 170 L (45 gallons)
- Water: Port and Starboard fore and aft tanks 23000 L (6075 Gallons)
- Holding tank 4000 L (1056 gallons)
- Grey water tanks: Forward 1279 L (338 gallons), aft port 228 L (138 gallons)
- Black watertank 840 L (222 gallons)
- Aft Hydraulic oil tank 378 L (99.8 Gallons)
- Forward Hydraulic oil tank 200 L (52.8 Gallons)

---

## Hydraulics

- Vickers port PTO and starboard PTO coupled to gensets
- 3 PH Hydraulic pump/ 24VDC Hydraulic pump
- Forward emergency 3PH Hydraulic motor for furling stays and windlasses
- 6 steering pump positions: port and starboard PTO's, 3 PH Hydraulic motor, 24 VDC Hydraulic motor, emergency 24VDC Hydraulic motor and emergency manual steering wheel in garage.
- Bow Thruster Hydraulic driven by either PTO's
- 2 Windlasses hydraulic driven by either PTO's, 3 PH and 24VDC pumps and forward emergency hydraulic pump
- Hydraulically operated garage door
- Hydraulic winches: 3 on deck aft of mast area, 2 at the cockpit and one captive winch

---

## Deck

- 50 Meters (164') carbonfiber triple spreader mast serviced in 2017
- 2X Hydraulic Maxell VWC 11000 Windlasses
- 2X Plow anchors 175KG 17mm chain
- Anchor wash down in chain locker
- Teak decks in good condition
- Large cockpit with seating for 12 dinner guests and 20 for cocktails
- Large garage

---

## Sails and Rigging

- 164 ' Carbon Fiber mast w/triple spreaders
- Hydraulic furling system for Genoa Reckmann RF90
- Hydraulic furling system for Jib Reckmann RF90
- Full batten main sail
- Hydraulic vang

- Hydraulic outhaul
- Hydraulic back stay
- Hydraulic fore stay
- Storm sail track on mast

---

## Safety Gear

---

- 3X 10 person Life rafts
- 2X Jon Buoy MKIV
- 6X Immersion suits
- 2X fire fighting suits with Drager autonomous breathing apparatus
- Near ocean medical kit MSOS-513
- Consillium Smoke and Fire detection system new in 2017

---

## Exclusions

---

Owner's personal belongings.

---

## Disclaimer

---

The Company offers the details of this vessel or yacht in good faith but cannot guarantee or warrant the accuracy of this information nor warrant the condition of the vessel. A buyer should instruct his representatives, agents, or his surveyors, to investigate such details as the buyer desires validated. This vessel or yacht is offered subject to prior sale, price change, or withdrawal without notice.

# PHOTOS

7449057\_20200817044234164\_1\_XLARGE



7449057\_20200817044237999\_1\_XLARGE



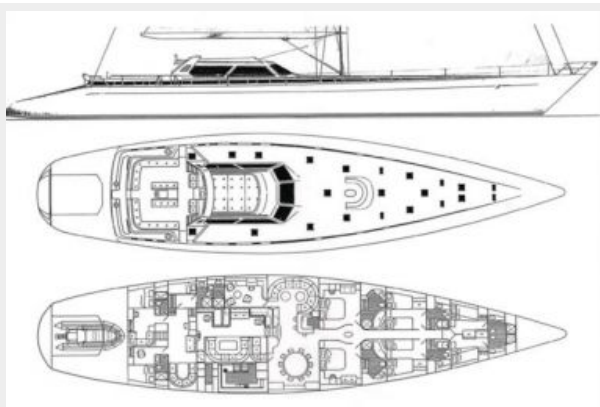
7449057\_20200817044242214\_1\_XLARGE



7449057\_20200515051559389\_1\_XLARGE



7449057\_20200728052242398\_1\_XLARGE



7449057\_20200512102837961\_1\_XLARGE



7449057\_20200512102821064\_1\_XLARGE



7449057\_20200513143632386\_1\_XLARGE



7449057\_20200513143649328\_1\_XLARGE



7449057\_20200512102930976\_1\_XLARGE



7449057\_20200512102944739\_1\_XLARGE



7449057\_20200512102957744\_1\_XLARGE



7449057\_20200512103022628\_1\_XLARGE



7449057\_20200512112112292\_1\_XLARGE



7449057\_20200512103035649\_1\_XLARGE



7449057\_20200512103127879\_1\_XLARGE



7449057\_20200512103009786\_1\_XLARGE



7449057\_20200512103108936\_1\_XLARGE



7449057\_20200513143756782\_1\_XLARGE



7449057\_20200513143813076\_1\_XLARGE



7449057\_20200513143725135\_1\_XLARGE



7449057\_20200513143742069\_1\_XLARGE



7449057\_20200512102918528\_1\_XLARGE



7449057\_20200513145315676\_1\_XLARGE



7449057\_20200512102853087\_1\_XLARGE



7449057\_20200512102845305\_1\_XLARGE



7449057\_20200512103116153\_1\_XLARGE



7449057\_20200513143708780\_1\_XLARGE



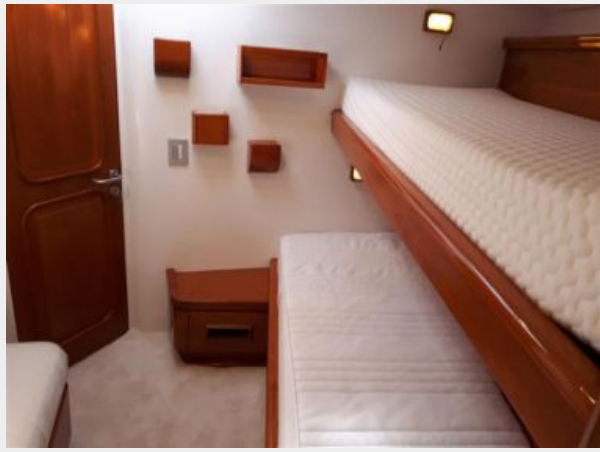
7449057\_20200513143827444\_1\_XLARGE



7449057\_20200513145432898\_1\_XLARGE



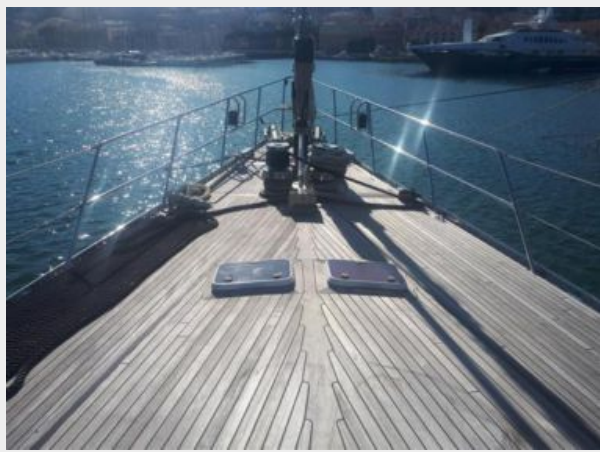
7449057\_20200513143842425\_1\_XLARGE



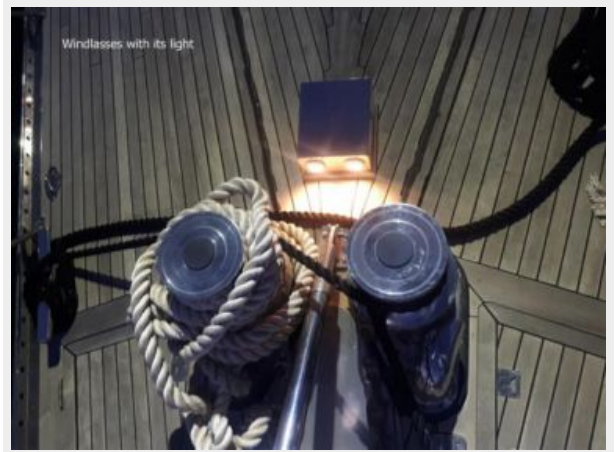
7449057\_20200513145602375\_1\_XLARGE



7449057\_20200513145500704\_1\_XLARGE



7449057\_20200513145417276\_1\_XLARGE



7449057\_20200513145521000\_1\_XLARGE



7449057\_20200515051548839\_1\_XLARGE

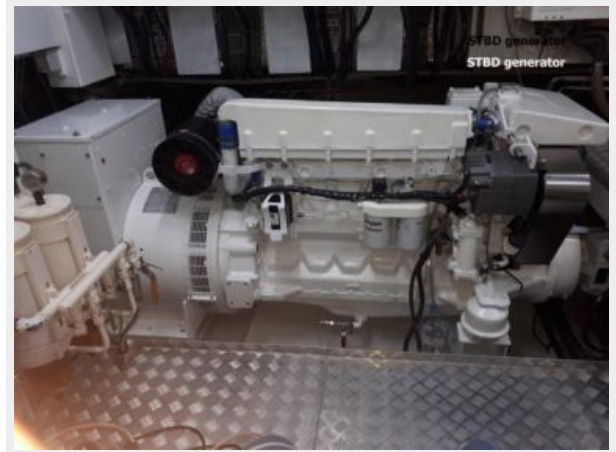




7449057\_20200515051618689\_1\_XLARGE

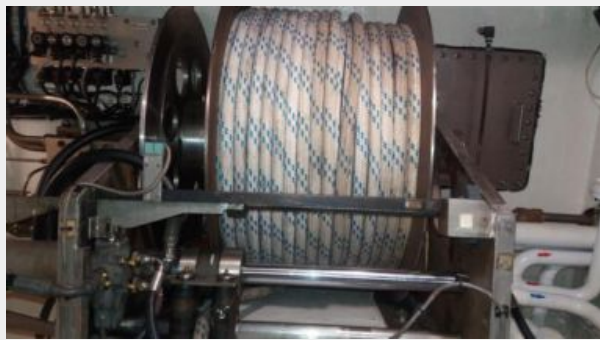


7449057\_20200515051532384\_1\_XLARGE



7449057\_20200513145540529\_1\_XLARGE

7449057\_20200513145302527\_1\_XLARGE



7449057\_20200513145354402\_1\_XLARGE



# CONTACTS

---

Andrey Shestakov, leading yacht broker of the sales department of Shestakov Yacht Sales Inc. Shestakov Yacht Sales Inc., the official representative of the Miami/Fort Lauderdale FL headquarters.

## Contact details

---

Email: [andrey@shestakovyachtsales.com](mailto:andrey@shestakovyachtsales.com)

Web: [shestakovyachtsales.com/en/](http://shestakovyachtsales.com/en/)

## Telephones

---

USA: +1(954)274-4435

## Office hours

---

Monday – Saturday: **9:00 - 21:00** EDT

Sunday: **closed**

## Address

---



Harbour Towne Marina, 850 NE 3rd St,  
STE 213, Dania, FL 33004