

ISTOK — ELAN



Builder: ELAN

Year Built: 2016

Model: Performance Sailboat

Price: PRICE ON APPLICATION

Location: United States

LOA: 39' 0" (11.89m)

Beam: 12' 10" (3.91m)

Max Draft: 5' 11" (1.80m)

Cruise Speed: 6 Kts. (7 MPH)

Max Speed: 8 Kts. (9 MPH)

Our experienced yacht broker, Andrey Shestakov, will help you choose and buy a yacht that best suits your needs **Istok — ELAN** from our catalogue. Presently, at Shestakov Yacht Sales Inc., we have a wide variety of yachts available on our sale's list. We also work in close contact with all the big yacht manufacturers from all over the world.

If you would like to buy a yacht **Istok — ELAN** or would like help answering any questions concerning purchasing, selling or chartering a yacht, please call **+1(954)274-4435**

TABLE OF CONTENTS

TABLE OF CONTENTS	2
SPECIFICATIONS	5
Overview	5
Basic Information	5
Dimensions	6
Speed, Capacities and Weight	6
Accommodations	6
Hull and Deck Information	6
Engine Information	6
DETAILED INFORMATION	7
Overview	7
Exclusions	8
Disclaimer	8
PHOTOS	9
2	9
3	9
4	9
5	9
6	9
7	9
8	10
9	10
11	10
10	10
12	10
13	10
14	11
15	11

17	11
16	11
18	11
19	11
21	12
20	12
22	12
23	12
24	12
25	12
26	13
27	13
28	13
29	13
30	13
31	13
32	13
33	13
34	14
35	14
36	14
37	14
38	14
39	14
40	15
41	15
CONTACTS	16
Contact details	16
Telephones	16

Office hours	16
Address	16

SPECIFICATIONS

Overview

Performance Bluewater Cruiser with Amazing Upgrades One of the fun things about buying a boat is getting to add all the bells and whistles for extended cruising. However, the downside is that this requires a lot of research, finding someone to do it and the huge expense, making it one of the most costly and stressful parts of buying a boat. Istok is a 2016 Elan Impression 40 whose owner has already added an amazing set of features and quality upgrades for long term/long range offshore cruising. So, all the hard work has been done for you, meaning all you need to do is go! There's currently no other boat this new on the market, with these upgrades and features, at such an attractive price point. Elan are a very high quality manufacturer of performance sailing yachts. Their build quality is known to be one of the finest. Made according to European offshore standards by expert craftsman in Slovenia, these boats can be seen all over the Mediterranean. Buyers in the know may also be looking for a Sabre, Hanse, Jeanneau, Dufour or Hylas. The Impression 40, a most impressive sailing yacht, is designed by Rob Humphreys to satisfy even the most demanding cruising families, friends and couples who really appreciate the distinctive design, style and comfort. Her welcoming Deck Saloon provides abundant natural light through the panoramic windows. The Impression 40 offers exceptional interior volume and quality finish combined with safe and easy handling whilst under sail. This Elan was purchased new from the factory in 2016 by its current and only owner. After preparing it for long-range cruising, the crew set off for a sail around the Med, then crossed the Atlantic and cruised the Caribbean. The boat is very sea worthy and is ready to take you anywhere your crew demands. Now sitting in a hurricane protected marina in Brunswick, GA, just off the ICW, she awaits new captain and crew. If you're looking for a top notch cruising boat with endless possibilities, you need to research Elan Yachts.

Basic Information

Category: Performance Sailboat

Model Year: 2016

Year Built: 2016

Country: United States

Dimensions

LOA: 39' 0" (11.89m)**LWL:** 32' 10" (10.01m)**LOD:** 37' 8" (11.48m)**Beam:** 12' 10" (3.91m)**Max Draft:** 5' 11" (1.80m)**Clearance:** 57' 9" (17.60m)**MFG Length:** 40' 0" (12.19m)

Speed, Capacities and Weight

Cruise Speed: 6 Kts. (7 MPH)**Max Speed:** 8 Kts. (9 MPH)**Displacement:** 18400 Pounds**Water Capacity:** 137 Gallons**Holding Tank:** 29 Gallons**Fuel Capacity:** 44 Gallons

Accommodations

Total Cabins: 3**Total Berths:** 4**Total Heads:** 1

Hull and Deck Information

Hull Material: Fiberglass

Engine Information

Engines: 1**Manufacturer:** Volvo Penta**Model:** D2-40B**Engine Type:** Sail Drive**Fuel Type:** Diesel

DETAILED INFORMATION

Overview

Accommodations

The Elan Impression has ample room for a family or sailing crew. The master stateroom is all the way forward with a large double berth offset to port with a settee to starboard. The large U-salon can be converted to make another large double berth. Moving all the way aft, to the left and right of the companionway steps are two large enclosed cabins with double berths and hanging lockers. Number of cabins: 3 Sleeps 8 (with salon converted) Number of double berths: 4 Number of heads: 1 Number of bathrooms: 1 Electronics Plotter - B&G ZEUS3-7, B&G ZEUS2-7 GPS - B&G ZEUS3-7, B&G ZEUS2-7 Cockpit speakers - FUSION Wind speed and direction - B&G VHF - B&G with AIS and handset CD player Log-speedometer - B&G Depth sounder - B&G Autopilot - B&G with wireless remote control Radio Sails and Rigging Sails Full batten mainsail 37.9 m² / 407'9" sq ft with 4 reefs and single line reefing system leads in to the cockpit Furling genoa 38.1 m² / 410'1" sq ft Spinnaker 98.0 m² / 1054'8" sq ft Storm Jib 10m² / 98 sq ft Lazybag and lazyjacks Rigging Aluminium mast Selden with 2 spreaders Aluminium boom Selden with Rodkicker and Boom brake Aluminium spinnaker boom Deck hardware Selden, Harken Roller furler Furlex 304SE Extra jammers Spinlock Spinnaker sheets Sheet bags and Haliard bags Winches: 2x Sheet winches Harken ST46.2 self tailing 2x Halliard winches Harken 40RWA12H self tailing, electric, reversable 2x Mast winches Harken ST40.2 self tailing Electrical Shore power connection both 110v and 220v for cruising both Europe and Americas Dual inverter system for both 110v and 220v devices: VICTRON 220V 50 HZ 2000W, VICTRON 110V 60HZ 3000W 4x 160W Solar panels and Victron Bluesolar 50A MPPT charge controller with control display Wind generator - SILENTWIND400 Batteries AGM 5x90Ah house bank and 1x70Ah starting Battery charger 230V 60A Electric bilge pump Oven Marine head Manual bilge pump Refrigerator Sea water pump Microwave oven Air compressor - Mobile (220V) Bow thruster Hot water - QUICK BOILER Battery charger - QUICK 220V 60A, VICTRON 110V 150A Webasto Heating - 5kW Deep freezer Fresh water maker - NEW Outside Equipment Large stainless steel radar arch with integrated solar panels, dinghy davits, outboard motor hoist Swimming ladder Large drop-down swimming platform 8 Person life raft Cockpit shower Teak cockpit Cockpit table Gangway Tender - APEX RIB 10ft Radar reflector Outboard engine brackets Davits Quick electric windlass with remote control and chain counter in the cockpit Anchor Rocna 20kg with 50m chain and 100m kevlar rope Spare anchors Delta 16kg and Danforth Florentino para anchor with rode Bimini top Sprayhood Full canvas deck cover for total UV protection Spares 2x Electric bicycles Jerrycans TV antenna on top of the mast Air compressor Vacuum cleaner Tools Spare propeller, seacocks, filters, blocks, hardware Bedding 12v Fuel transfer pump for spill free jerrycan transfer, even in rough sea conditions

Exclusions

Owner's personal belongings.

Disclaimer

The Company offers the details of this vessel or yacht in good faith but cannot guarantee or warrant the accuracy of this information nor warrant the condition of the vessel. A buyer should instruct his representatives, agents, or his surveyors, to investigate such details as the buyer desires validated. This vessel or yacht is offered subject to prior sale, price change, or withdrawal without notice.

PHOTOS

2



3



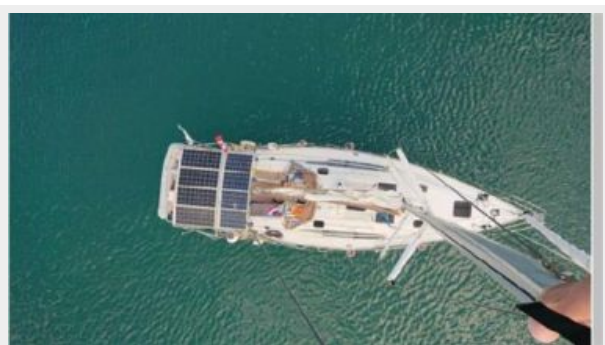
4



5



6



7



8



9



10



11



12



13



14



15



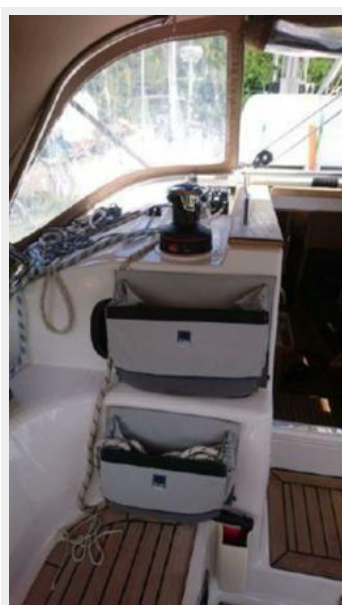
17



16



18



19



20



21



22



23



24



25



26



27



28



29



30



31



32



33



34



35



36



37



38



39



40



41



CONTACTS

Andrey Shestakov, leading yacht broker of the sales department of Shestakov Yacht Sales Inc. Shestakov Yacht Sales Inc., the official representative of the Miami/Fort Lauderdale FL headquarters.

Contact details

Email:
andrey@shestakovyachtsales.com

Web: shestakovyachtsales.com/en/

Telephones

USA: **+1(954)274-4435**

Office hours

Monday – Saturday: **9:00 - 21:00 EDT**

Sunday: **closed**

Address



Harbour Towne Marina, 850 NE 3rd St,
STE 213, Dania, FL 33004