

WADDLE WE DO — HORIZON



Builder: HORIZON

Year Built: 2014

Model: Motor Yacht

Price: PRICE ON APPLICATION

Location: United States

LOA: 88' 0" (26.82m)

Beam: 21' 0" (6.40m)

Min Draft: 5' 7" (1.70m)

Cruise Speed: 18 Kts. (21 MPH)

Max Speed: 24 Kts. (28 MPH)

Our experienced yacht broker, Andrey Shestakov, will help you choose and buy a yacht that best suits your needs **WADDLE WE DO — HORIZON** from our catalogue. Presently, at Shestakov Yacht Sales Inc., we have a wide variety of yachts available on our sale's list. We also work in close contact with all the big yacht manufacturers from all over the world.

If you would like to buy a yacht **WADDLE WE DO — HORIZON** or would like help answering any questions concerning purchasing, selling or chartering a yacht, please call **+1(954)274-4435**

TABLE OF CONTENTS

TABLE OF CONTENTS	2
SPECIFICATIONS	4
Overview	4
Basic Information	4
Dimensions	4
Speed, Capacities and Weight	4
Accommodations	4
Hull and Deck Information	5
Engine Information	5
DETAILED INFORMATION	6
Main Description	6
Aft Deck	6
Salon	6
Formal Dining	6
Galley	6
Master Stateroom	7
Master Stateroom Head	7
VIP Stateroom	7
Port Guest Stateroom	7
Starboard Guest Stateroom	7
Crews Quarters	7
Crew Galley	8
Captain's Cabin	8
Pilothouse / Skylounge	8
Engine Room	8
Disclaimer	8
Exclusions	9
Disclaimer	9

PHOTOS	10
Bow Sunpad	10
Aft Deck	10
Main Salon Forward	10
Main Salon Port	10
Galley	10
Formal Dining Area	10
Dinette Forward Galley	11
Flybridge Aft Deck	11
Enclosed Flybridge Seating	11
Flybridge Helm	11
Staircase to Staterooms	11
Flybridge Captain's Chair	11
Companionway	12
Master Stateroom	12
Master Shower and Vanity	12
Master Stateroom 2	12
VIP Stateroom	13
Guest Stateroom Twins	13
Crew Washer and Dryer	13
Crew Dinette	13
Crew Berth	13
Layout	13
CONTACTS	14
Contact details	14
Telephones	14
Office hours	14
Address	14

SPECIFICATIONS

Overview

Check out the Virtual Tour!

Basic Information

Category: Motor Yacht

Model Year: 2015

Year Built: 2014

Country: United States

Dimensions

LOA: 88' 0" (26.82m)

LWL: 77' 3" (23.55m)

Beam: 21' 0" (6.40m)

Min Draft: 5' 7" (1.70m)

Clearance: 24' 6" (7.47m)

MFG Length: 89' 4" (27.23m)

Speed, Capacities and Weight

Cruise Speed: 18 Kts. (21 MPH)

Max Speed: 24 Kts. (28 MPH)

Water Capacity: 500 Gallons

Holding Tank: 200 Gallons

Fuel Capacity: 2700 Gallons

Accommodations

Total Cabins: 4

Total Berths: 6

Sleeps: 8

Total Heads: 5

Captain Cabin: True

Crew Sleeps: 4

Hull and Deck Information

Hull Material: Fiberglass

Deck Material: Teak

Hull Configuration: Semi-Displacement

Hull Color: White

Engine Information

Engines: 2

Manufacturer: Caterpillar

Model: C32 Acert

Engine Type: Inboard

Fuel Type: Diesel

DETAILED INFORMATION

Main Description

Designed by Swedish designer John Lindblom, the Horizon E88, is a contemporary style vessel that combines a performance-oriented hull with a sleek superstructure, while retaining the family resemblance of the E Series. **Waddle We Do** features four en suite staterooms within a flexible and multi-functional layout that includes numerous thoughtful details, including a stand-alone island design for the main-deck galley. The interior layout inherits Horizon's successful concept of ensuring living comfort with spacious accommodations. **Waddle We Do** is designed with island-living luxury in mind, providing its owners the ultimate comfortable cruising experience.

Aft Deck

-Large teak dining table w/upholstered seating-Bar to starboard w/2 swivel-out stools-Perlick refrigerator-Cabinet with light switches and outlet-2500 Maxwell windlass

Salon

-Hi-gloss Walnut & Maitore woodwork throughout-Black Marquina/Satuario marble floor at Salon entry-Fabrica Gossamer silk weave carpet flooring-Dayhead starboard upon entry into Salon-Mirror back storage cabinet upon entry portside w/engraved glass doors-Electric Blinds-Custom chrome wall sconces-Desk area with laptop and drawer storage -2 built-in freezer drawers stbd forward-Walnut/Maitore wood coffee table with storage-Sectional Sofa-Swivel armchair-60" Samsung LED Smart TV-DirecTV reciever-Bose Lifestyle sound system w/ iPod dock-Samsung Blu-Ray player-Apple TV

Formal Dining

-Walnut & high-gloss dark pearl grey formal dining table with removable center leaf-Seating for up to 8 guests-Storage cabinetry in High Gloss Walnut-Fabrica Gossamer carpet flooring

Galley

-Sub-Zero refrigerator-Sub-Zero freezer drawer-Miele Dishwasher-Miele Cooktop-Miele Oven-Jenn-air 30" range Microwave-Broan Trash Compactor-GE Garbage Disposal-Perlick Beverage Center-Miele Coffee Machine-Silestone Countertop-Silver inter-layered glass High-low partition in aft section of galley countertop to give separation from formal dining area-Emperador Light Marble floor w/ Black Marquina border & Satuario Beige-China Storage-Country Kitchen Dinette w/ seating for 8 -Samsung 32" LED smart TV-DirecTV receiver

Master Stateroom

-Full Beam-Double door entrance w/ leather inlay-Centerline King berth-Dual cedar lined walk in closets off to portside forward and aft-Fabrica Gossamer silk weave carpet- High gloss Walnut/Maitore wood finishing-Oversized windows off to port and stbd-Vanity with storage-Samsung 48" LED smart TV-DirecTV reciever-Bose Lifestyle V25 surround sound w/ iPod dock-Samsung Blu-ray player-Apple TV

Master Stateroom Head

-Snow Rosa counter top & Floor-Lacquered finish cream hi-gloss walls-Porthole window-Walnut cabinetry-Double Sink Vanity-Oversized mirror medicine cabinet with adjustable shelving-Shower stall with Mosaic tile and Snow Rosa-Hansgrohe Raindance 3 jet showerhead-Hansgrohe shower panel-Tecma Silence plus toilet

VIP Stateroom

-Forward VIP with centerline queen berth-En-suite head with single sink and shower stall-Full hang cedar lined closet-Hi-gloss Walnut throughout-(2) reading lights-Fabrica Gossamer silk weave carpet flooring-Accent mirrors on port and starboard side of berth-(4) porthole windows-Fusion bluetooth MS-AV7001 head unit-Samsung 32" LED smart TV-Apple TV-DirecTV reciever

Port Guest Stateroom

-(2) Twin Berths-Ensuite head with single sink and shower stall-Full hanging cedar lined closet-Single nightstand with storage-Hi-gloss walnut finish throughout-Oversized mirror headboard-28" Samsung LED smart TV on hinged wall mount-Fusion Bluetooth MS-AV7001-Apple TV-DirecTV receiver

Starboard Guest Stateroom

-(2) twin bunks-En-suite head with single vanity and shower stall-Cedar Lined closet with 2 storage drawers below-Hi-gloss walnut throughout-Single porthole window-Fabrica Gossamer silk weave carpet-Fusion Bluetooth MS-AV7001 head unit

Crews Quarters

-(2) twin berths including pullman for top bunk-Full hang closet-Samsung 22" LED TV-Fusion Bluetooth MS0AV7001 head unit-Head with single vanity sink and shower stall-Folding door access on Stbd side to Lazarette/storage compartment-Port aft storage closet with fixed shelving

Crew Galley

-Settee seating w/ Silestone dining table-Overhead cabinetry-Spice Cabinet-GE stacked frontload washer/dryer-Summit Refrigerator/freezer-Summit CR 2110 dual cooktop-Gianneschi hood (blower)-Fisher Paykel microwave-Samsung 28" LED TV-DirecTV reciever-Fusion Bluetooth MS-AV7001 head unit-USB outlet

Captain's Cabin

-Double Berth-Drawer storage under berth-Full hang cedar lined closet with drawer storage below

-Honeycomb blinds-(2) Portlights-USB Charger-(2) reading lights-Samsung 28" LED TV-DirecTV receiver-Fusion Bluetooth MS-AV7001 head unit

Pilothouse / Skylounge

-Off-White leather settee seating w/ hi-low Silestone table-Day head in port aft section with single sink & Techma toilet-Mahogany & Holly wood flooring throughout-Bezenzoni electric drop down window aft with pocket sliding door to open up skylounge to flybridge area-Desert sands honeycomb blinds-Samsung 40" LED smart TV (replaced 12/2019)-(2) ICOM VHF's IC-M604-FLIR-Ritchie compass-Bennett trib tabs-Garmin electronics-Seafire alarm system-ABT Trac controls for stabilizers/thrusters/hydraulics-KVH Tracphone-Glomex analog on FB top-Bose Lifestyle 235 surround sound w/ iPod dock-Samsung Blu-ray player-Apple TV-DirecTV receiver-(2) STIDD 500N-2X2 helm Chair - black-Black Leather dashboard w/ stainless steel inserts

-Cabinetry throughout finished off in Hi-Gloss Walnut-Electrical panel to starboard

AFT OF SKYLounge-Port side counter area with grill, fridge, storage-Hot tub-L-shaped seating w/frosted glass table & 2 swivel seats-Steel Head Marine 1500 lb. davit-Teak sole-Access ladder to hardtop radar

Engine Room

- Twin Caterpillar C32 Acerts w/2067 hours Serial #'s RPM00180 / RPM00179

- (2) Cummins/Onan generators Hours: 1223 Port / 1215 Strbd Serial #'s F30513776 / E120344041

Disclaimer

The Company offers the details of this vessel in good faith but cannot guarantee or warrant the

accuracy of this information nor warrant the condition of the vessel. A buyer should instruct his agents, or his surveyors, to investigate such details as the buyer desires validated. This vessel is offered subject to prior sale, price change, or withdrawal without notice.

Exclusions

Owner's personal belongings.

Disclaimer

The Company offers the details of this vessel or yacht in good faith but cannot guarantee or warrant the accuracy of this information nor warrant the condition of the vessel. A buyer should instruct his representatives, agents, or his surveyors, to investigate such details as the buyer desires validated. This vessel or yacht is offered subject to prior sale, price change, or withdrawal without notice.

PHOTOS

Bow Sunpad



Aft Deck



Main Salon Forward



Main Salon Port



Formal Dining Area



Galley



Dinette Forward Galley



Flybridge Aft Deck



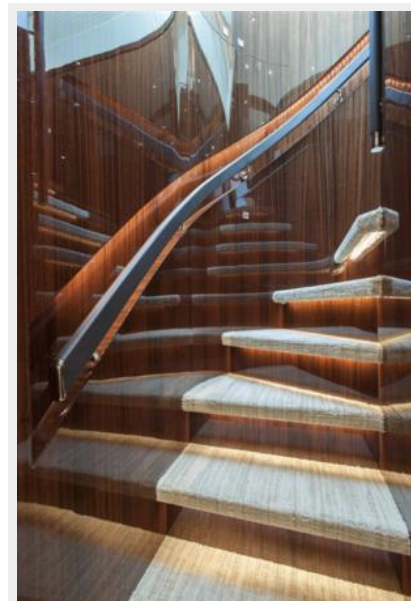
Enclosed Flybridge Seating



Flybridge Helm



Staircase to Staterooms



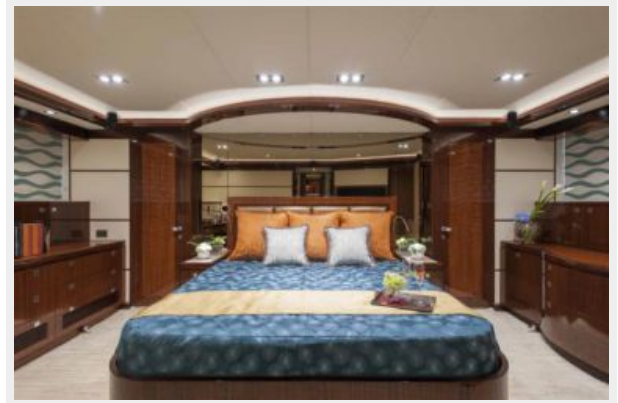
Flybridge Captain's Chair



Companionway



Master Stateroom



Master Shower and Vanity



Master Stateroom 2



VIP Stateroom



Guest Stateroom Twins



Crew Washer and Dryer



Crew Dinette



Crew Berth



Layout



CONTACTS

Andrey Shestakov, leading yacht broker of the sales department of Shestakov Yacht Sales Inc. Shestakov Yacht Sales Inc., the official representative of the Miami/Fort Lauderdale FL headquarters.

Contact details

Email: andrey@shestakovyachtsales.com

Web: shestakovyachtsales.com/en/

Telephones

USA: +1(954)274-4435

Office hours

Monday – Saturday: **9:00 - 21:00** EDT

Sunday: **closed**

Address



Harbour Towne Marina, 850 NE 3rd St,
STE 213, Dania, FL 33004