

GALEON 485 HTS — GALEON



Builder: GALEON

LOA: 49' 2" (14.98m)

Year Built: 2022

Beam: 14' 0" (4.25m)

Model: Motor Yacht

Max Draft: 2' 9" (0.82m)

Price: PRICE ON APPLICATION

Location: Poland

Our experienced yacht broker, Andrey Shestakov, will help you choose and buy a yacht that best suits your needs **GALEON 485 HTS — GALEON** from our catalogue. Presently, at Shestakov Yacht Sales Inc., we have a wide variety of yachts available on our sale's list. We also work in close contact with all the big yacht manufacturers from all over the world.

If you would like to buy a yacht **GALEON 485 HTS — GALEON** or would like help answering any questions concerning purchasing, selling or chartering a yacht, please call **+1(954)274-4435**

TABLE OF CONTENTS

TABLE OF CONTENTS	2
SPECIFICATIONS	3
Overview	3
Basic Information	3
Dimensions	3
Speed, Capacities and Weight	3
Accommodations	3
Hull and Deck Information	3
Engine Information	4
DETAILED INFORMATION	5
Galeon 485 HTS	5
Exclusions	6
Disclaimer	6
PHOTOS	7
dd8c21e9a226319564824d7ef941e729	7
0e0cd7f44c7d6de3f949f67ea1dd4580	7
0d201841fcc673d76ffc53a1c339b468	7
d40db770ddb48965b1849517eaa6b2e9	7
5aa3054b20d99548ffe496712d1609ae	7
4ba78cfdb1da213e6dc6a4196b002fc8	7
dee100316b4c24d8aeb593dbb70c21d3	7
2057ced39335bda9b9042e571beb73ac	7
CONTACTS	8
Contact details	8
Telephones	8
Office hours	8
Address	8

SPECIFICATIONS

Overview

The updated 485 HTS joins the amazing third-generation Galeon model lineup with its brilliant, awe-inspiring design. This sports-oriented open deck model focuses on providing high manoeuvrability and a thrilling ride while still maintaining an exceptional level of comfort.

Basic Information

Category: Motor Yacht	Model Year: 2022
Year Built: 2022	Country: Poland

Dimensions

LOA: 49' 2" (14.98m)	Beam: 14' 0" (4.25m)
Max Draft: 2' 9" (0.82m)	Clearance: 16' 9" (5.10m)

Speed, Capacities and Weight

Water Capacity: 118.8774234 Gallons	Fuel Capacity: 317.0064624 Gallons
-------------------------------------	------------------------------------

Accommodations

Total Cabins: 2	Sleeps: 6
-----------------	-----------

Hull and Deck Information

Hull Material: Fiberglass

Engine Information

Engines: 1

Manufacturer: Volvo Penta

Model: 2* - D4 - 300 DPI

DETAILED INFORMATION

Galeon 485 HTS

The layout of the 485 HTS was conceived to offer a convenient and spacious living arrangement. The main deck features a U-shaped sofa, a wet bar and a helm station with double seats. The cockpit area is occupied by a settee and sundeck and can be divided by retractable glass door to help keep the elements at bay. Select a smaller garage option to take advantage of the larger U-shaped sofa for guests. Wide side decks on both sides lead to the bow where an additional leisure area awaits.

Down below an abundance of natural light penetrates the interior, with a large glass ceiling over the helm station and ample bow skylights. Comfort and convenience have not been neglected: the master cabin located midship boasts an en suite bathroom for added privacy. The guest cabin holds the bow and has direct access to the common areas: a galley, a lounge and an additional bathroom.

Take advantage of the large hydraulic garage and platform to handle all personal water paraphernalia including dinghies and jet skis. Passengers will surely enjoy the bow leisure area with a protective bimini as well as the large sundeck in the cockpit shaded by the automatic marquee system. A wide range of engines with IPS or sterndrive propulsion systems is available along with a comprehensive list of additional equipment and several interior design lines.

Sport Cruiser line

The 485 is the embodiment of a modern sport cruiser with its impressive exterior, sport-like handling and the luxurious interior available in several variants. Step on board to discover what makes this model so special.

Features:

- To make your 485 stand out even more, select one of many custom color schemes
- A sporty disposition of the 485 HTS
- Perfect proportions compliment the sleek design
- To sit more guests, order the 485 with the extended settee instead of the sundeck area
- Make use of the available bath platform
- Down below find a saloon with a galley and two guest cabins
- The owner's cabin is located midship for extra comfort and head space
- A dinette with a fold-out table

- The compact galley will store all the necessities
- Forward VIP guest cabin with skylights above
- Bow sundeck area
- Outside rest area
- Slide the sunroof and enjoy the breeze

Exclusions

Owner's personal belongings.

Disclaimer

The Company offers the details of this vessel or yacht in good faith but cannot guarantee or warrant the accuracy of this information nor warrant the condition of the vessel. A buyer should instruct his representatives, agents, or his surveyors, to investigate such details as the buyer desires validated. This vessel or yacht is offered subject to prior sale, price change, or withdrawal without notice.

PHOTOS

dd8c21e9a226319564824d7ef941e729



0e0cd7f44c7d6de3f949f67ea1dd4580



0d201841fcc673d76ffc53a1c339b468



d40db770ddb48965b1849517eaa6b2e9



5aa3054b20d99548ffe496712d1609ae



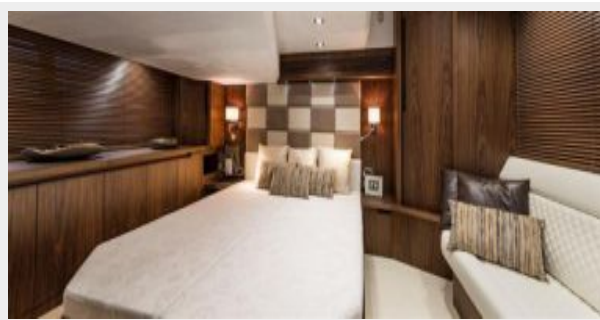
4ba78cfdb1da213e6dc6a4196b002fc8



dee100316b4c24d8aeb593dbb70c21d3



2057ced39335bda9b9042e571beb73ac



CONTACTS

Andrey Shestakov, leading yacht broker of the sales department of Shestakov Yacht Sales Inc. Shestakov Yacht Sales Inc., the official representative of the Miami/Fort Lauderdale FL headquarters.

Contact details

Email: **andrey@shestakovyachtsales.com**

Web: shestakovyachtsales.com/en/

Telephones

USA: **+1(954)274-4435**

Office hours

Monday – Saturday: **9:00 - 21:00 EDT**

Sunday: **closed**

Address



Harbour Towne Marina, 850 NE 3rd St,
STE 213, Dania, FL 33004