

NO NAME — PURSUIT



Builder: PURSUIT

Year Built: 1999

Model: Cruising Yacht

Price: PRICE ON APPLICATION

Location: United States

LOA: 30' 0" (9.14m)

Beam: 10' 6" (3.20m)

Max Draft: 3' 3" (0.99m)

Cruise Speed: 20 Kts. (23 MPH)

Max Speed: 28 Kts. (32 MPH)

Our experienced yacht broker, Andrey Shestakov, will help you choose and buy a yacht that best suits your needs **No Name — PURSUIT** from our catalogue. Presently, at Shestakov Yacht Sales Inc., we have a wide variety of yachts available on our sale's list. We also work in close contact with all the big yacht manufacturers from all over the world.

If you would like to buy a yacht **No Name — PURSUIT** or would like help answering any questions concerning purchasing, selling or chartering a yacht, please call **+1(954)274-4435**

TABLE OF CONTENTS

TABLE OF CONTENTS	2
SPECIFICATIONS	4
Overview	4
Basic Information	4
Dimensions	4
Speed, Capacities and Weight	4
Accommodations	4
Hull and Deck Information	5
Engine Information	5
DETAILED INFORMATION	6
MAIN DESCRIPTION	6
Features	6
STANDARD EQUIPMENT MANUFACTURERS DESCRIPTION	6
HEAD	7
Galley	7
CO-BROKERAGE	7
DISCLAIMER	7
Exclusions	7
Disclaimer	8
PHOTOS	9
1 No Name 1999 30' Pursuit David Robinson	9
2	9
3	9
4	9
5	9
6	9
7	10
8	10

9	10
10	10
11	10
12	10
13	11
14	11
15	11
16	11
17	11
18	11
19	12
20	12
21	12
CONTACTS	13
Contact details	13
Telephones	13
Office hours	13
Address	13

SPECIFICATIONS

Overview

The Pursuit 3000 is built for fishing but also makes a great weekend family boat. This 1999 model has been well maintained by its owner, very clean and a recent waxing. Mercruiser engines provide reliable power and plenty of horsepower. The large cockpit and helm area provide plenty of room for fishing and entertaining. This boat is easy to see on the Chesapeake Bay and ready for its next adventure with its new owner.

Basic Information

Category: Cruising Yacht

Sub Category: Express

Model Year: 1999

Year Built: 1999

Country: United States

Dimensions

LOA: 30' 0" (9.14m)

Beam: 10' 6" (3.20m)

Max Draft: 3' 3" (0.99m)

Clearance: 10' 6" (3.20m)

Speed, Capacities and Weight

Cruise Speed: 20 Kts. (23 MPH)

Max Speed: 28 Kts. (32 MPH)

Water Capacity: 30 Gallons

Holding Tank: 18 Gallons

Fuel Capacity: 210 Gallons

Accommodations

Total Cabins: 1

Total Berths: 1

Total Heads: 1

Hull and Deck Information

Hull Material: Fiberglass

Engine Information

Engines: 2

Manufacturer: Mercruiser

Model: 5.7 Liter efi Gen +

Engine Type: Inboard

Fuel Type: Gas/Petrol

DETAILED INFORMATION

MAIN DESCRIPTION

The Pursuit 3000 is built for fishing but also makes a great weekend family boat. This 1999 model has been well maintained by its owner, very clean and a recent waxing. Mercruiser engines provide reliable power and plenty of horsepower. The large cockpit and helm area provide plenty of room for fishing and entertaining. This boat is easy to see on the Chesapeake Bay and ready for its next adventure with its new owner.

Features

Mercruiser PowerMorse controlsFuruno FCVFuruno radarGarmin GPS Map 740Standard Horizon VHF radioClarion radio and speakersRitchie CompassGE MicrowaveOutriggersInterior cushions excellent conditionHelm Cushions like newDinette seating for fourRoomy V berth with cushionsEnclosed head, shower and stainless sinkLarge open cockpitLarge spacious foredeckDanforth style anchorPlenty of helm storage beneath seatingTackle storage stationSwim platform

STANDARD EQUIPMENT MANUFACTURERS DESCRIPTION

Standard Equipment Manufacturers Description(Current layout might vary)Hull, Deck and Cockpit:5-year transferrable limited warranty on hull and deckWhite hull and deckConstructed with a water-barrier outer gelcoat layer and hand-laid fiberglass with a specially formulated resinCustom non-skid deck, cockpit surface and gunnel boardsAcrylic sliding companionway door with lockDay hatch in upper cockpit floor for engine access/routine maintenancePort lounge seat, oversided ladder- back seat at helmBronze seacocks and underwater thru-hull fittingsSelf-draining cockpitOne piece welded, 316L stainless steel bow railTwo chrome plated bronze hawse hole deck pipesVented heavy duty aluminum windshield with built-in hand railsFour opening aluminum port lights with screensFlush forward rode locker with overboard drainMolded-in fiberglass bow pulpit with S.S. bow roller316L stainless steel foredeck cleatHullside engine exhaustThree forward deck hatches with adjuster and screensMolded-in heavy duty transom door and gateRecessed fold down aft seatFour 316L stainless steel 10" mooring cleatsTwo 316L stainless steel 10" spring cleatsRecessed trim tabsIntegral fiberglass hullside engine room ventilationFiberglass gunnel boardsCockpit coaming bolstersPort & Starboard windshield wiperGold tip throttle knobsElectric engine hatch lifting systemComfort and Interior:Carbon monoxide detectorVinyl headliner12V Indirect and spot lightsUnderberth storage compartments in dinette areaDouble berth forward with storage underneathHanging locker with lightReading lights110V outletFishing:Four S.S. rod holdersRaw water washdown systemIn floor removable fishbox / storagewith macerator pump outPrep center sink and cutting board with tackle lockerLive bait circulating systemInstrumentation, Equipment and Safety:Pursuit custom master circuit breaker switch panel for 12V and 110VReverse polarity indicatorOne 30-amp 50'

dockside power cord with adapter Hydraulic steering system with cast custom aluminum wheel Fireboy automatic extinguisher (FE 241) High speed bronze axe head rudders and struts Aquamet® 22, 11?2" prop shafts Nibral propellers Bonding system with transom and shaft zincs Gauges including:- Rudder indicator- Volt meters- Fuel gauges- Temperature gauges- Hour meters- Oil pressure gauges- Tachometers Audible engine alarms Deluxe Ritchie® compass Engine room light Gray gelcoat painted bilge Tides® water cooled shaft logs Raycor® fuel filters with water separators (diesel) Fresh water cooling Morse® engine controls Water heater (6 gallon) Fresh water tank, 30 gallon Cockpit courtesy lights Two bilge blowers Horn Two manual/automatic bilge pumps One 20-amp battery charger U.S.C.G. and International approved lighting U.S.C.G. and B.I.A. ventilation standard Custom Pursuit battery management system

HEAD

Marine head system Full head/shower with sump pump S.S. sink with hot and cold pressure water system Port light for ventilation 110V outlet GFI protected Granite Cote® vanity top with storage compartment under sink Vanity mirror

Galley

Complete galley with Granite Cote® counter top Sink with hot and cold pressure water system One-burner electric stove Microwave AC/DC refrigerator Storage cabinets

CO-BROKERAGE

At Curtis Stokes & Assoc. all of our listings are available for co-brokerage on a 50-50 commission split agreement when the selling broker shows the listing and attends the survey. If the selling broker requires a courtesy showing and we are available to conduct a courtesy showing on our listing, the co-brokerage commission split is 60% listing commission and 40% selling commission. If the selling broker does not attend the survey, the co-brokerage commission split is 70% listing commission and 30% selling commission.

DISCLAIMER

The Company offers the details of this vessel in good faith but cannot guarantee or warrant the accuracy of this information nor warrant the condition of the vessel. A buyer should instruct his agents, or his surveyors, to investigate such details as the buyer desires validated. This vessel is offered subject to prior sale, price change, or withdrawal without notice.

Exclusions

Owner's personal belongings.

Disclaimer

The Company offers the details of this vessel or yacht in good faith but cannot guarantee or warrant the accuracy of this information nor warrant the condition of the vessel. A buyer should instruct his representatives, agents, or his surveyors, to investigate such details as the buyer desires validated. This vessel or yacht is offered subject to prior sale, price change, or withdrawal without notice.

PHOTOS

1 No Name 1999 30' Pursuit David Robinson

2



3

4



5

6



7



8



9



10



11



12



13



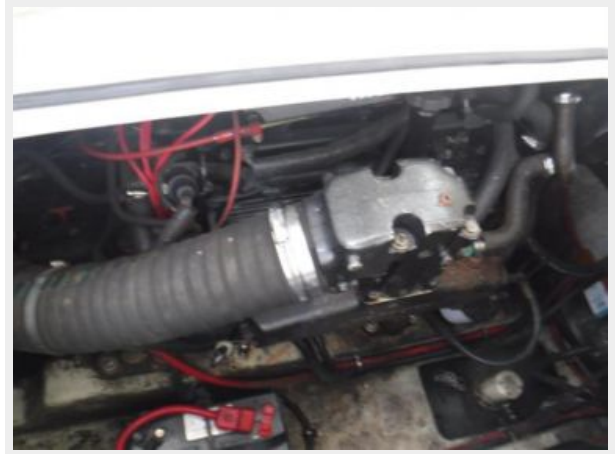
14



15



16



17



18



19



20



21



CONTACTS

Andrey Shestakov, leading yacht broker of the sales department of Shestakov Yacht Sales Inc. Shestakov Yacht Sales Inc., the official representative of the Miami/Fort Lauderdale FL headquarters.

Contact details

Email: andrey@shestakovyachtsales.com

Web: shestakovyachtsales.com/en/

Telephones

USA: +1(954)274-4435

Office hours

Monday – Saturday: **9:00 - 21:00** EDT

Sunday: **closed**

Address



Harbour Towne Marina, 850 NE 3rd St,
STE 213, Dania, FL 33004