

## SERENITY II — CATALINA



**Судостроитель:** CATALINA

**Год постройки:** 1998

**Модель:** Cruising/Racing Sailboat

**Цена:** ЦЕНА ЯХТЫ ПО ЗАПРОСУ

**Местонахождение:** United States

**Длина общая:** 36' 4" (11.07m)

**Ширина:** 11' 11" (3.63m)

**Макс. осадка:** 5' 8" (1.73m)

**Крейс. скорость:** 5.213857452 Kts. (6 MPH)

**Макс. скорость:** 6.951809936 Kts. (8 MPH)

Купить **Serenity II — CATALINA** а также выбрать подходящую вам яхту из нашего каталога яхт вам поможет опытный яхтенный брокер Андрей Шестаков. На сегодняшний день компания **Shestakov Yacht Sales Inc.** имеет большое количество яхт в собственном списке продаж, а также тесно сотрудничает со всеми крупными яхтенными производителями по всему миру.

Для того чтобы купить яхту **Serenity II — CATALINA** а также проконсультироваться по любому вопросу связанному с покупкой, продажей, чартером яхт позвоните по телефону **+7(918)465-66-44**.

# ОГЛАВЛЕНИЕ

ОГЛАВЛЕНИЕ	2
ХАРАКТЕРИСТИКИ	5
Обзор	5
Основная информация	5
Размеры	5
Скорость, вместимость и масса	6
Размещение	6
Корпус и палуба	6
Информация о двигателе	6
ПОДРОБНОЕ ОПИСАНИЕ	7
Overview	7
Исключения	8
Отказ от ответственности	8
ФОТОГРАФИИ	10
2	10
3	10
4	10
5	10
7	10
6	10
8	11
9	11
10	11
11	11
12	11
13	11
15	12
14	12

16	12
17	12
18	12
19	12
20	13
21	13
22	13
23	13
24	13
25	13
26	14
27	14
28	14
29	14
30	14
31	14
32	15
33	15
35	15
34	15
37	15
36	15
38	16
39	16
40	16
41	16
42	16
43	16
44	17

---

45	17
46	17
47	17
49	17
48	17
50	18
<b>КОНТАКТЫ</b>	<b>19</b>
Контактная информация	19
Телефоны	19
Время работы	19
Адрес	19

# ХАРАКТЕРИСТИКИ

## Обзор

GREAT CRUISING BOAT - LOADED WITH GEAR PERFECT FOR A COUPLE - READY TO SET SAIL ONLY 1120 HOURS

The Catalina 36 has won over many a sailor. Known for its sizeable accommodations in a 36' hull. The C-36 MKII is a perfect blend of sail speed, interior room/comfort and a spacious, well laid out cockpit. Creating the perfect boat for cruising couples - easy to manage, quick and easy to sail, modern and timeless. Serenity II has been equally enjoyed by his owner as a Bahamian cruiser as well as a first place club race winner. Making it the perfect boat for long or short range adventures. The boat has been well prepped for a Caribbean adventure and features great cruising upgrades: - Oversized Stainless Steel Dinghy Davits with Solar Mounts- 200w Solar Panels- Wind generator - AIS Transceiver - Outboard Motor Hoist- Outboard Motor Mount- 3 Headsails: 110, 135 and 150 - North Sails Mainsail only 5 years old (spare fully battened Mainsail included)- 10' hard bottom inflatable and 10hp Tohatsu (negotiable)- Solid fiberglass hand-laid hull - never worry about blisters!- Keel stepped mast for added strength offshore- Set up for spinnaker sailing - two sets of primaries, spinnaker blocks, etc. Boat is easy to see and ready to go! Please get in touch with the listing broker below to arrange a viewing.

## Основная информация

**Тип судна:** Cruising/Racing Sailboat

**Модельный год:** 1998

**Год постройки:** 1998

**Страна:** United States

## Размеры

**Длина общая:** 36' 4" (11.07m)

**Длина по ватерлинии:** 30' 3" (9.22m)

**Ширина:** 11' 11" (3.63m)

**Макс. осадка:** 5' 8" (1.73m)

**Длина привального бруса:** 36' 0"  
(10.97m)

## Скорость, вместимость и масса

---

**Крейс. скорость:** 5.213857452 Kts. (6 MPH)

**Макс. скорость:** 6.951809936 Kts. (8 MPH)

**Водоизмещение:** 15000 Pounds

**Вместимость воды:** 80 Gallons

**Вместимость сточного бака:** 17 Gallons

**Объем топливного бака:** 25 Gallons

## Размещение

---

**Всего кают:** 2

**Всего коек:** 3

**Всего ком. состава:** 1

## Корпус и палуба

---

**Материал корпуса:** Fiberglass

## Информация о двигателе

---

**Двигатели:** 1

**Производитель:** Universal

**Модель:** M35BC

**Тип двигателя:** Inboard

**Тип топлива:** Diesel

# ПОДРОБНОЕ ОПИСАНИЕ

## Overview

### Equipment List SAILS AND RIGGING

- 135% Furling Genoa, Dacron with UV Protection- Mainsail, Dacron with Reef, Full Battens and Dutchman Flaking System- Internal Halyards, Low Stretch Sail Handling- Inboard and Outboard Genoa Tracks- Traveler Control w- Adjuster System-Low Lead Genoa Blocks- Winch Handle- Self Tailing Mainsheet Winch- Main Halyard Led Aft, with Sheet Stopper- Boom Vang, Rigid Adjustable Type- Two Jib Halyards, Led Aft, with Sheet Stoppers- Single Line Mainsail Reefing System- Mid Boom Sheeting with Traveler- Two, Two-Speed Self Tailing Primary Winches- Self Tailing Jib Halyard Winch- Headsail Furling Gear Propulsion, Steering & Controls

AGE AND TYPE OF SAILS INCLUDED:

110 - 2018 - nice, used mostly. 150 - North Sails, 5 years old 135 - unknown - but NOT original, has a foam luff probably circa 2013 too. Loose Foot Mainsail was brand new with this seller/owner got it. Has top two battens, age, 2013 Also, has the Original Main in sail bag- but never used it. It's fully battened. ENGINE and MECHANICAL - Universal Diesel Engine, 30 hp., Model 35 4 Cylinder Fresh Water Cooled, with Panel and Tachometer- Pedestal Steering, Brake, Engine Controls- 5" Illuminated Binnacle Compass- Two Blade Bronze Propeller- 40" Destroyer Wheel with Stainless Steel Pedestal Guard- Bilge Blower Deck and Exterior Hardware HULL AND DECK: - Walk Through Stern with Removable Helm Seat- One Piece Fiberglass Hull, White- One Piece Fiberglass Deck, White with Gray Two-Tone- Molded-in Gel Coat Waterline, Midwatch Blue- Midwatch Blue Sheer Stripes- Molded-in nonskid Texture Surface- Fiberglass Hull and Deck Liners- Coaming Compartment, Starboard- Double Rail Bow and Stern Pulpits- Stern Boarding Ladder with Contour Treads- Stern Rails with Observation Seats Port and Starboard- Hand Rails on Cabin Top, Stainless Steel Double Lifelines with Pelican Hooks- Anchor Locker on Foredeck Interior INTERIOR - Varnish finish on Interior- Teak and Holly Veneer Sole- Cabin Window Shades- Hanging Locker with Bureau- Chart Table with Swivel Seat- Teak Veneer Bulkheads and Teak Interior Trim- Opening Ports with Screens- Ventilation Hatch, Main Cabin, Aluminum Framed- Berth Linen Package for Fore and Aft Double Berths- Entertainment Cabinet- Opening Hatch in Head Compartment, Aluminum Framed- Pillow Type Cushions Galley- Refrigeration System, DC Power- Two Burner Stove with Oven, Stainless Steel, LPG with Auto Ignition- Large Icebox with Shelves- Pump for Discharge of Icebox Plumbing- Hot & Cold Pressure Water System in Galley and Head, with Shower- Manual Bilge Pump- Electric Bilge Pump- Hot and Cold Shower on Stern- Marine Head with Holding Tank, Deck Discharge Outlet- Macerator Pump for Overboard Discharge of Holding Tank Electrical System ELECTRICAL: - Marine Battery Charger- DC Electrical System with Safety Switch and Panel with Breakers- AC Dockside Power with 6 Outlets, Polarity Indicator and Breakers- Battery

Condition Meter- Anchor Light on Masthead- Deck Light and Steaming Light on Mast- Cabin and Navigation Lights- Electric Anchor Windlass, Vertical with Chain Gypsy ELECTRONICS- Raytheon ST60 Speed and Depth Systems Mounted on 3 Instrument NavPod with 1" AngleGuard- VHF Radio: Raytheon Ray 45 with Antenna- VHF Radio: Standard Intrepid with RAM Microphone and Antenna- Wind Package: Raytheon ST60 Wind System- Navstation Repeater: Raytheon ST60 Multi Display- Chartplotter: Garmin 720XS, 7" Display- Navstation Display: Raytheon RL70 Second Station for Chartplotter- Radar - Radar Antenna: Raytheon 2 kW Dome and Cable, Mast Mounted.- ST4000 Autopilot: Raytheon Wheel Mounted System- ST5000 Autopilot: Raytheon Inboard System- AIS Transceiver - Sony CD - Receiver, Two Pair Poly-Planar Speakers each in Main Cabin and Cockpit with Remote Control Sail AreaIPE : 555.75 sq ftI : 44.75 ftJ : 14.33 ftP : 39.00 ftE : 12.00 ftWorking Sail Area : 555.00 sq ftKeel DetailsKeel: Deep Fin (w/ Tall Mast)Keel Type: FinBallast: 6000 lbDisplacement: 14100 sq ftMax Draft: 5.8 ftManufacturer Provided DescriptionBecause the Catalina 36 is easily handled by a couple, has a big comfortable cockpit, a spacious interior with two private cabins and the integrity to pursue cruising dreams, many experienced sailors consider the Catalina 36 the perfect boat for their sailing lifestyle.The Catalina 36 MkII has all the important characteristics that made the original the most popular 36-foot sailboat in the world. The Mark II Catalina 36 is built in the same seakindly moderate displacement hull. It tracks surely and performs well in a variety of conditions.The deck is the classic trunk cabin configuration - proven, comfortable and functional. The main cabin and galley have received special attention to design and detail. The galley is a functional 'U' shape, with composite countertops, the sinks are near centerline for proper drainage underway. A large refrigerated ice box is aft and a dry food locker is forward. A gimballed, stainless steel LPG stove with oven is standard equipment. The main cabin can be arranged with a dinette or traditional table. The two seats and game table to starboard can be made into a settee or berth with the cushions provided. The entertainment center cabinet can be fitted with a stereo and concealed TV. The main cabin and all interior teak has the warmth and durability only obtained with multiple coats of varnish.The 36 has stainless steel hand rails and anodized spars, reducing maintenance on deck and extending the sailing season. The mechanical, electrical and plumbing systems have been re-engineered to increase dependability and accessibility. Engine access, for example, is excellent, with the one-piece, insulated enclosure removed. The hull is rugged, hand-laminated, solid fiberglass; the keel is lead with integrally cast stainless steel bolts. The mast is stepped through the deck on the keel and has inline spreaders and fore and aft lower shrouds, a sturdy arrangement that is easy to tune.

---

## Исключения

При продаже яхты исключаются личные вещи владельца.

---

## Отказ от ответственности

Компания предоставляет описание судна или яхты добросовестно, но не может гарантировать точность этой информации, а также не ручается за техническое состояние. Покупатель должен проинструктировать своих агентов или оценщиков



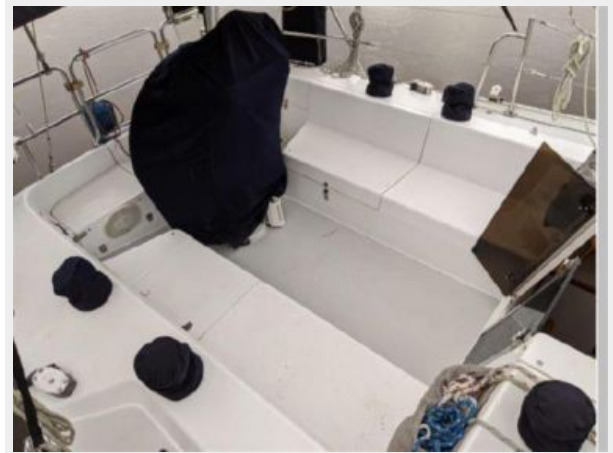
исследовать представленную информацию более подробно, по собственному желанию. Продажа судна или яхты, изменение цены или снятие с продажи будет происходить без предварительного уведомления.

# ФОТОГРАФИИ

2



3



4



5



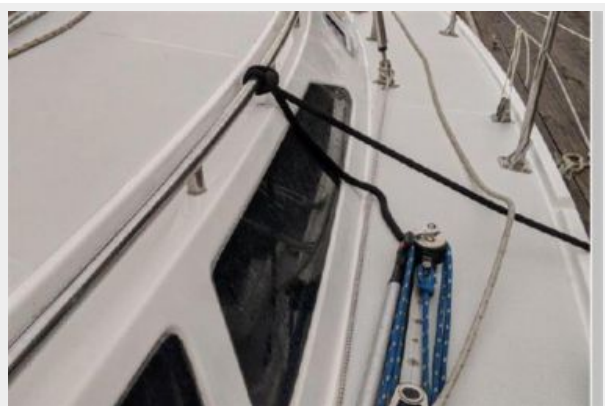
6



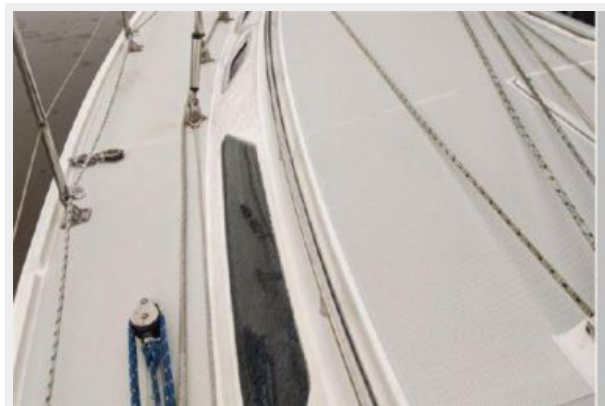
7



8



9



10



11



12



13





14



15



16



17



18



19



20



21



22



23



24



25





26



27



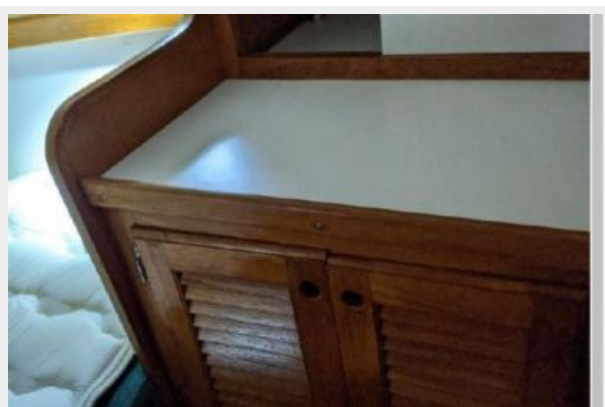
28



29



30



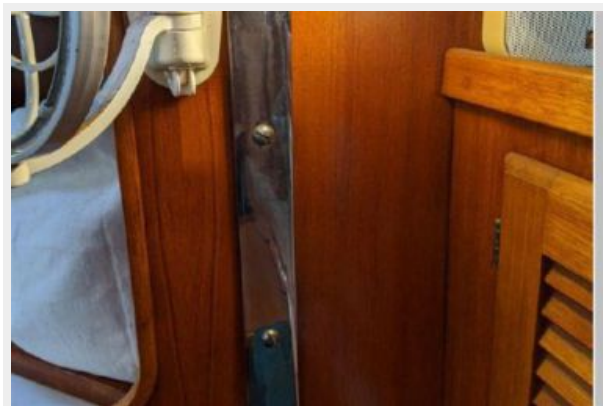
31



32



33



34



35



36



37





38



39



40



41



42



43





44



45



46



47



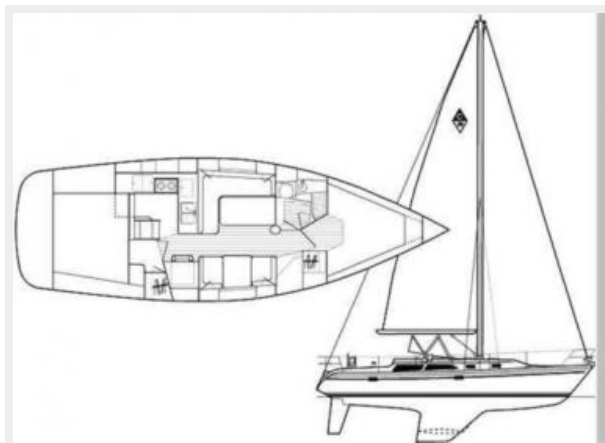
48



49



50



# КОНТАКТЫ

---

Андрей Шестаков (Andrey Shestakov) – ведущий яхтенный брокер отдела продаж яхт и судов компании Shestakov Yacht Sales Inc. Официальный представитель Shestakov Yacht Sales Inc. для русскоговорящих клиентов в центральном офисе компании в Майами/Форт Лодердейл/Флорида/США.

## Контактная информация

---

Email: [andrey@shestakovyachtsales.com](mailto:andrey@shestakovyachtsales.com)

Web: [shestakovyachtsales.com](http://shestakovyachtsales.com)

## Телефоны

---

Краснодарский край: **+7(918)465-66-44**

США, Майами, Флорида: **+1(954)274-4435**

## Время работы

---

Понедельник – Суббота: **9:00 - 21:00**  
EDT

Воскресенье: **Закрето**

## Адрес

---



Harbour Towne Marina, 850 NE 3rd St,  
STE 213, Dania, FL 33004