

SWEET-T — CATALINA



Builder: CATALINA

Year Built: 2004

Model: Cruising Sailboat

Price: PRICE ON APPLICATION

Location: United States

LOA: 35' 0" (10.67m)

Beam: 13' 0" (3.96m)

Max Draft: 4' 6" (1.37m)

Our experienced yacht broker, Andrey Shestakov, will help you choose and buy a yacht that best suits your needs **Sweet-T — CATALINA** from our catalogue. Presently, at Shestakov Yacht Sales Inc., we have a wide variety of yachts available on our sale's list. We also work in close contact with all the big yacht manufacturers from all over the world.

If you would like to buy a yacht **Sweet-T — CATALINA** or would like help answering any questions concerning purchasing, selling or chartering a yacht, please call **+1(954)274-4435**

TABLE OF CONTENTS

TABLE OF CONTENTS	2
SPECIFICATIONS	5
Overview	5
Basic Information	5
Dimensions	5
Speed, Capacities and Weight	5
Accommodations	6
Hull and Deck Information	6
Engine Information	6
DETAILED INFORMATION	7
Overview	7
Exclusions	7
Disclaimer	8
PHOTOS	9
3	9
2	9
5	9
4	9
6	10
7	10
9	10
8	10
10	10
11	10
13	11
12	11
14	11
15	11

16	11
17	11
18	12
19	12
20	12
21	12
22	12
23	12
24	13
25	13
26	13
27	13
28	13
29	13
30	14
31	14
32	14
33	14
34	14
35	14
36	15
37	15
39	15
38	15
40	16
41	16
42	16
43	16
44	17

45	17
46	17
47	17
48	17
49	17
50	18
51	18
52	18
53	18
54	19
55	19
56	19
CONTACTS	20
Contact details	20
Telephones	20
Office hours	20
Address	20

SPECIFICATIONS

Overview

Very Low Engine Hours and Like New Generator - Fully Equipped for Cruising Adventures This is rare example of the ever popular Catalina 350 cruiser known for it's ease of handling and superior cabin space with 6' 6" of headroom, the 350 packs a punch only seen in much bigger boats. Sweet-T was originally sold to its first owner by our dealership and then taken back on trade and sold to the current owner, so it's been in the Dunbar family since new. Did I mention it has a Generator with only 35 hours and an Engine with less than 400 hours!When do you see a standalone shower stall in a 35' boat....the 350 has one! From the cockpit you have access to a very large, deep lazarette with integrated storage bins and shelves that creates a garage perfect for supplies, tools, lines and sails. And, with two private cabins, a large fully equipped galley and ultra leather upholstery in the salon, the 350 is built for comfort and extended cruising. This boat is ready to sail!Sweet-T won't last long as it's very rare to see a 350 with this feature set and low, low hours. Get in touch to arrange a viewing soon!Note: New listing, will be updating full details ASAP!

Basic Information

Category: Cruising Sailboat

Model Year: 2004

Year Built: 2004

Country: United States

Dimensions

LOA: 35' 0" (10.67m)

LWL: 31' 3" (9.53m)

Beam: 13' 0" (3.96m)

Max Draft: 4' 6" (1.37m)

Clearance: 52' 0" (15.85m)

MFG Length: 35' 0" (10.67m)

Speed, Capacities and Weight

Displacement: 12937 Pounds

Water Capacity: 77 Gallons

Holding Tank: 15 Gallons

Fuel Capacity: 39 Gallons

Accommodations

Total Cabins: 2

Total Berths: 4

Total Heads: 1

Hull and Deck Information

Hull Material: Fiberglass

Engine Information

Engines: 1

Manufacturer: Universal

Model: 35

Engine Type: Inboard

Fuel Type: Diesel

DETAILED INFORMATION

Overview

Accommodations The Catalina 350 is an all-new design incorporating many features usually found only on larger vessels. The spacious cabin layout features large comfortable cabins fore and aft. The owner's stateroom features a centerline, queen size berth with lockers, drawers, and private access to the head. The head features a vanity counter, a full medicine cabinet, and an enclosed stall shower with a folding door. Moving aft, into the lounge, the settee features separate dining and cocktail tables while to port, the game table stows to become a full-length settee or berth. With an L-shaped galley, the 350 includes ample storage and counter space. Also included are such amenities as a two burner stove and oven, a top and front accessible refrigerator with shelves and a separate freezer, large storage lockers, a deep stainless steel sink & microwave. With a wide 13' beam, the aft cabin is even more spacious than before. The 350 interior is built from teak veneer bulkhead, with solid teak cabinetry and moldings. Varnished teak interiors are durable and easier to touch-up allowing you to keep your 350 interior yacht finish as a proper yacht.

Galley • Refrigerator system – DC power • LP gas two burner stove with oven • Front and top loading refrigerator with separate freezer • Microwave • Stainless steel sink with hot and cold pressure water system

Hull & Deck • Lead Keel with stainless steel bolts • Hand rails on cabin top • Stern rail with observation seats • Folding cockpit table • Walk through stern boarding ladder with contour threads • 6 opening deck hatches • Cockpit dodger, side panel window covers and bimini with connector

Engine & Mechanical Equipment • Universal diesel engine, model 35XP, 35 hp, fresh water cooled • Three blade prop • 5" illuminated binnacle compass • 40" destroyer leather wrapped wheel, stainless steel with pedestal guard • PSS shaft seal

Electrical • Battery charger • DC system with 2 4D deep cycle marine batteries, selector switch and panel with breakers • Electric anchor windlass • Shore power cords

Electronics • 2 zone 17,000 BTU air conditioning and reverse cycle heating system with dehumidifier mode • Raymarine ST 60 speed, depth and wind Tridata instrument mounted on off-set pedestal • Standard VHF with ram mic • Auto pilot ST6001 • Raymarine 435 Color Chartplotter

Sails & Rigging • 2 – two speed self tailing primary winches • Self-tailing jib halyard winch • Self-tailing main sheet winch • 135% furling genoa • Windex • In mast furling system

Equipment • Companionway cover with bug screen • Canvas package – mainsail, pedestal & winch covers • Closed cell cockpit cushions • Epoxy bottom with anti-fouling paint • Freight & commissioning include

Dunbar Safety & Equipment Package • 33 lb. claw anchor • 10' ACCO 5/16" ISO Hi test galvanized chain • 5/8" X 200' anchor line with 5/8" thimble • 2 Seadog 3/8" galvanized shackles • 2 8" X 20" fenders with 3/8" X 10' line • Throwable cushion • Olin "alerter" flare kit • Air Horn • 6" brass bell • 3 Kidde 10 BC fire extinguisher • 6 Adult life jackets Type II • Life preserver bag • 4 5/8" X 35' dock lines • Windex 15 • 30 amp shore power cord

Exclusions

Owner's personal belongings.

Disclaimer

The Company offers the details of this vessel or yacht in good faith but cannot guarantee or warrant the accuracy of this information nor warrant the condition of the vessel. A buyer should instruct his representatives, agents, or his surveyors, to investigate such details as the buyer desires validated. This vessel or yacht is offered subject to prior sale, price change, or withdrawal without notice.

PHOTOS

2



3



4



5



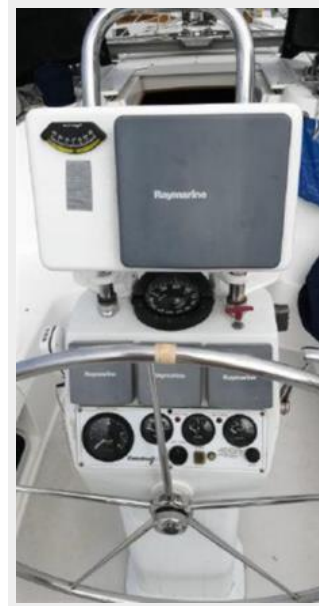
6



7



9



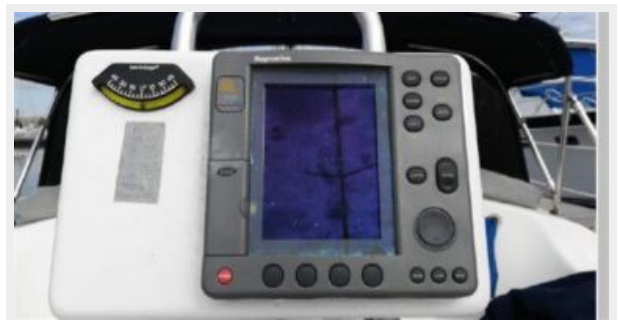
8



10



11



12



13



14



15



16



17



18



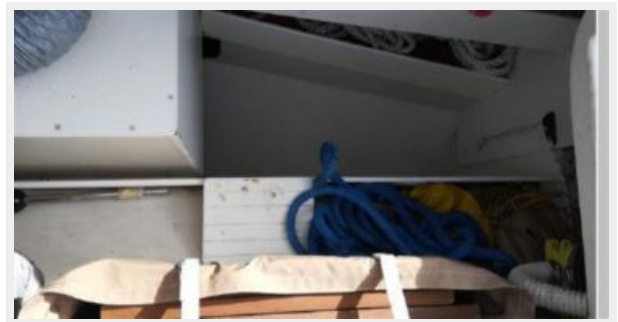
19



20



21



22



23



24



25



26



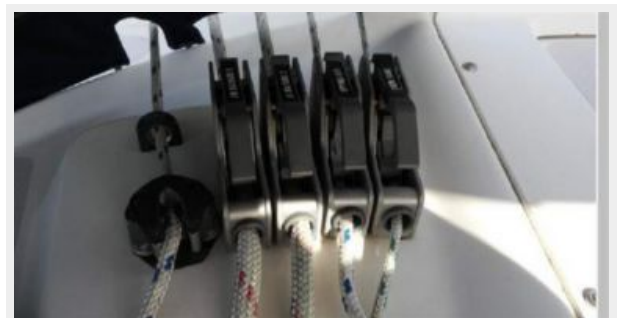
27



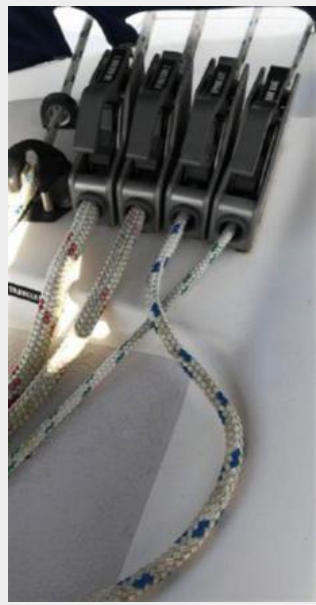
28



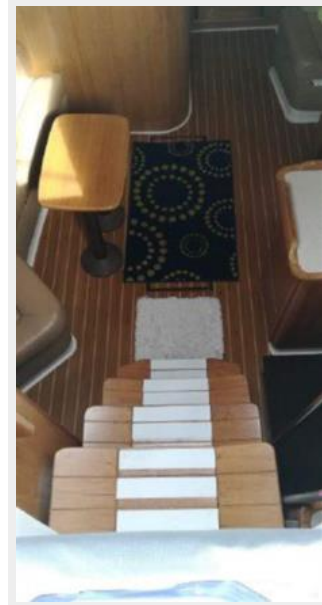
29



30



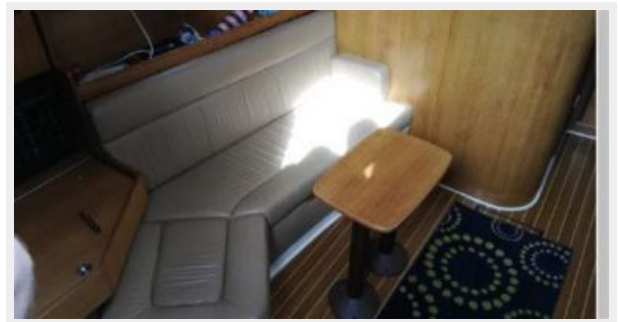
31



32



33



34



35



36



37



39



38



40



41



42



43



44



45



46



47



48



49



50



51



52



53



54



55



56



CONTACTS

Andrey Shestakov, leading yacht broker of the sales department of Shestakov Yacht Sales Inc. Shestakov Yacht Sales Inc., the official representative of the Miami/Fort Lauderdale FL headquarters.

Contact details

Email: andrey@shestakovyachtsales.com

Web: shestakovyachtsales.com/en/

Telephones

USA: +1(954)274-4435

Office hours

Monday – Saturday: **9:00 - 21:00** EDT

Sunday: **closed**

Address



Harbour Towne Marina, 850 NE 3rd St,
STE 213, Dania, FL 33004