

WAFARER — STANLEY WILLIAMS



Builder: STANLEY WILLIAMS

Year Built: 1984

Model: Cruising Yacht

Price: PRICE ON APPLICATION

Location: United States

LOA: 38' (11.58mm)

Beam: 12.16

Min Draft: 3' 6" (1.07mm)

Cruise Speed: 15 Knots Kts. (17 MPH)

Max Speed: 20 Knots Kts. (23 MPH)

Our experienced yacht broker, Andrey Shestakov, will help you choose and buy a yacht that best suits your needs **Wafarer — STANLEY WILLIAMS** from our catalogue. Presently, at Shestakov Yacht Sales Inc., we have a wide variety of yachts available on our sale's list. We also work in close contact with all the big yacht manufacturers from all over the world.

If you would like to buy a yacht **Wafarer — STANLEY WILLIAMS** or would like help answering any questions concerning purchasing, selling or chartering a yacht, please call **+1(954)274-4435**

TABLE OF CONTENTS

TABLE OF CONTENTS	2
SPECIFICATIONS	5
Overview	5
Basic Information	5
Dimensions	5
Speed, Capacities and Weight	5
Accommodations	6
Hull and Deck Information	6
Engine Information	6
PHOTOS	7
2	7
3	7
4	7
5	7
6	7
7	7
8	8
9	8
10	8
11	8
12	8
13	8
14	9
15	9
16	9
17	9
18	9
19	9

20	10
21	10
22	10
23	10
24	10
25	10
26	11
27	11
28	11
29	11
30	11
31	11
32	12
33	12
34	12
35	12
36	12
37	12
38	13
39	13
40	13
41	13
42	13
43	13
44	14
45	14
CONTACTS	15
Contact details	15
Telephones	15

Office hours	15
Address	15

SPECIFICATIONS

Overview

True Maine Downeast Lobster Yacht, one of the most beautiful boats on the coast of Maine. Over this past winter, the owner had the older CAT replaced with a NEW 400HP YANMAR diesel. We can't say enough about how classy "Wayfarer" looks and feels. She is the first Stanley 38 that John Williams Boat Company launched. She was designed and built in 1983/84 for a family from Wilmington, Delaware and Boca Grand, Florida. Please give us a call to learn more about this fantastic opportunity!

Basic Information

Category: Cruising Yacht

Sub Category: Downeast

Model Year: 1984

Year Built: 1984

Country: United States

Dimensions

LOA: 38' (11.58mm)

Beam: 12.16

Min Draft: 3' 6" (1.07mm)

Speed, Capacities and Weight

Cruise Speed: 15 Knots Kts. (17 MPH)

Max Speed: 20 Knots Kts. (23 MPH)

Water Capacity: 100 Gallons

Holding Tank: 20 Gal Gallons

Fuel Capacity: 100 Gal Gallons

Accommodations

Total Cabins: 1

Total Berths: 5

Total Heads: 1

Hull and Deck Information

Hull Material: Fiberglass

Hull Configuration: Semi-Displacement

Engine Information

Engines: 1

Manufacturer: Yanmar

Engine Type: Inboard

Fuel Type: Diesel

PHOTOS

2



3



4



5



6



7



8



9



10



11



12



13



14



15



16



17



18



19



20



21



22



23



24



25



26



27



28



29



30



31



32



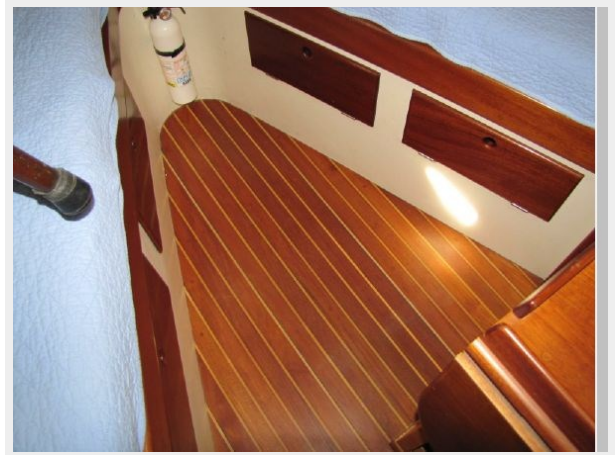
33



34



35



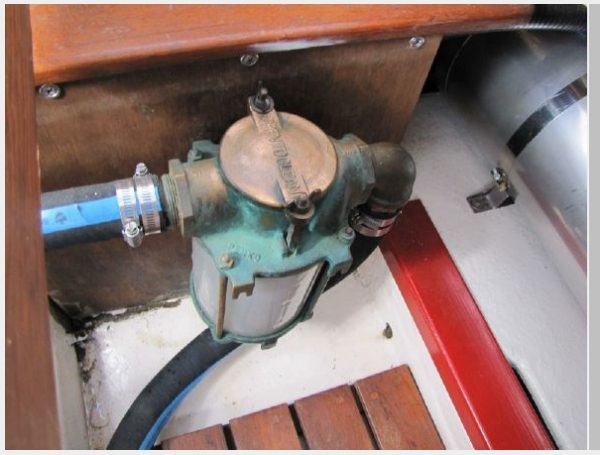
36



37



38



39



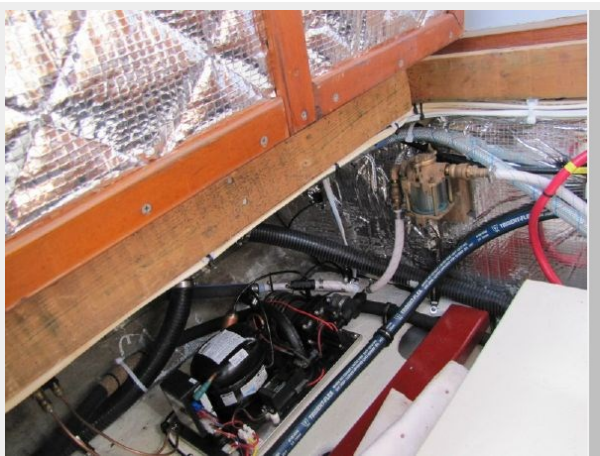
40



41



42



43



44



45



CONTACTS

Andrey Shestakov, leading yacht broker of the sales department of Shestakov Yacht Sales Inc. Shestakov Yacht Sales Inc., the official representative of the Miami/Fort Lauderdale FL headquarters.

Contact details

Email: andrey@shestakovyachtsales.com

Web: shestakovyachtsales.com/en/

Telephones

USA: +1(954)274-4435

Office hours

Monday – Saturday: **9:00 - 21:00** EDT

Sunday: **closed**

Address



Harbour Towne Marina, 850 NE 3rd St,
STE 213, Dania, FL 33004