

WESTWIND — CATALINA



Builder: CATALINA

Year Built: 2005

Model: Cruising Sailboat

Price: PRICE ON APPLICATION

Location: United States

LOA: 27' 0" (8.23m)

Beam: 9' 10" (3.00m)

Max Draft: 3' 6" (1.07m)

Our experienced yacht broker, Andrey Shestakov, will help you choose and buy a yacht that best suits your needs **Westwind — CATALINA** from our catalogue. Presently, at Shestakov Yacht Sales Inc., we have a wide variety of yachts available on our sale's list. We also work in close contact with all the big yacht manufacturers from all over the world.

If you would like to buy a yacht **Westwind — CATALINA** or would like help answering any questions concerning purchasing, selling or chartering a yacht, please call **+1(954)274-4435**

TABLE OF CONTENTS

TABLE OF CONTENTS	2
SPECIFICATIONS	5
Overview	5
Basic Information	5
Dimensions	5
Speed, Capacities and Weight	5
Accommodations	6
Hull and Deck Information	6
Engine Information	6
DETAILED INFORMATION	7
Overview	7
Exclusions	7
Disclaimer	8
PHOTOS	9
2	9
3	9
4	9
5	9
6	10
7	10
8	10
9	10
10	11
11	11
13	11
12	11
15	12
14	12

16	12
17	12
18	12
19	12
21	13
20	13
22	13
23	13
24	14
25	14
26	14
27	14
28	15
29	15
30	15
31	15
32	16
33	16
34	16
35	16
36	16
37	16
38	17
39	17
40	17
41	17
42	17
CONTACTS	18
Contact details	18

Telephones	18
Office hours	18
Address	18

SPECIFICATIONS

Overview

Excellent condition, freshwater only, lightly sailed (Lake Norman, NC), low engine hours (<350), excellent bottom, well equipped. Located on Lake Norman in NC, this is a well maintained 2005 Catalina 270 featuring a wide comfortable cockpit with cockpit cushions and folding table, and Edson wheel and helm station. Easily sailed and handled with Charleston Spar in-mast mainsail furling, Schafer jib furler, and recently added mast track and whisker pole. Roomy interior features port side galley with stove, ice box, and ample storage. V berth forward and large berthing compartment aft utilizes every inch of the spacious interior. Large settee and convertible dining table offers flexible utilization of the space. Well equipped with portable air conditioner, Uniden VHF radio, Sony stereo/CD player with internal and external speakers. Raymarine ST 60 Electronics and ST 4000 Autopilot, mast head windex and canvas package. Life Sling man overboard recovery device, winch covers, all safety equipment, anchor with chain and rode. This is a well maintained, turnkey Catalina 270 with many extras and ready sail a way! NEW UPDATES: Rub rail replaced 2016 Two deep cycle batteries 2018 Pro Mariner 20 Amp battery charger with digital remote monitor Interlux VC 17 M bottom paint 2018 Forespar Spinnaker track 2019

Basic Information

Category: Cruising Sailboat

Model Year: 2005

Year Built: 2005

Country: United States

Dimensions

LOA: 27' 0" (8.23m)

LWL: 23' 9" (7.24m)

Beam: 9' 10" (3.00m)

Max Draft: 3' 6" (1.07m)

Speed, Capacities and Weight

Displacement: 6240 Pounds

Accommodations

Total Berths: 2

Total Heads: 1

Hull and Deck Information

Hull Material: Fiberglass

Engine Information

Engines: 1

Manufacturer: Yanmar

Model: 2GM20F

Engine Type: Inboard

Fuel Type: Diesel

DETAILED INFORMATION

Overview

Electronics

- Depthsounder - ST 60
- Log-speedometer - ST 60
- Wind speed and direction
- Autopilot - ST 4000
- Compass - ST 60
- VHF
- Radio - Sony
- CD player - Sony
- Cockpit speakers

Sails

- Furling mainsail - Charleston Spar In Mast
- Furling genoa - 135%

Inside Equipment

- Battery charger - 20 AMP
- Air conditioning - Portable Carry On
- Marine head - Manual
- Refrigerator

Electrical Equipment

- Shore power inlet

Outside Equipment/Extras

- Cockpit cushions
- Cockpit table
- Swimming ladder

Exclusions

Owner's personal belongings.

Disclaimer

The Company offers the details of this vessel or yacht in good faith but cannot guarantee or warrant the accuracy of this information nor warrant the condition of the vessel. A buyer should instruct his representatives, agents, or his surveyors, to investigate such details as the buyer desires validated. This vessel or yacht is offered subject to prior sale, price change, or withdrawal without notice.

PHOTOS

2



3



4



5



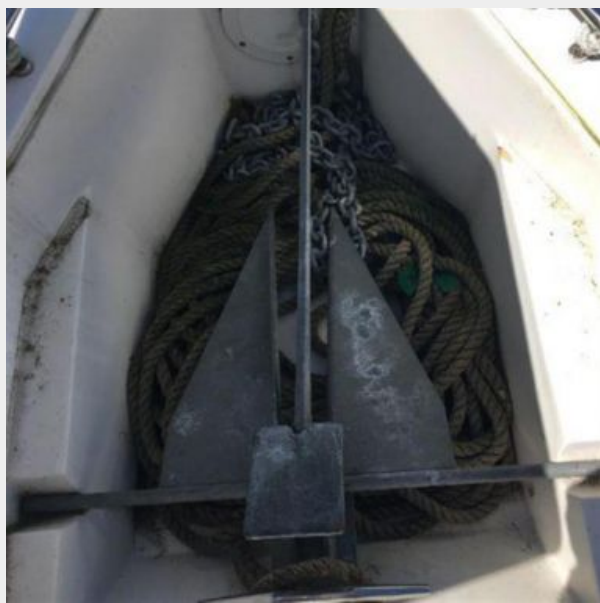
6



7



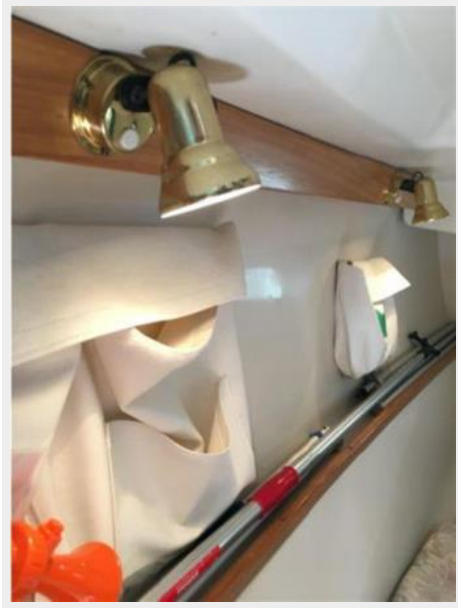
8



9



10



11



13



12



14



15



16



17



18



19



20



21



22



23



24



25



26



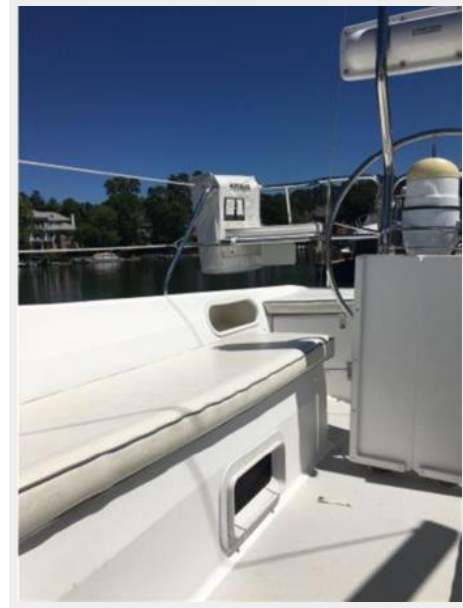
27



28



29



30



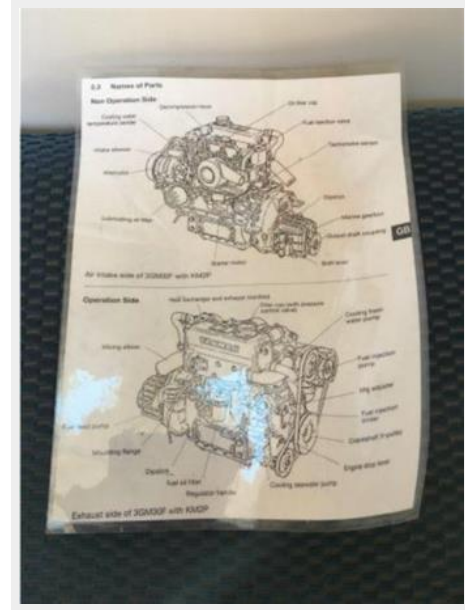
31



32



33



34



35



36



37



38



39



40



41



42



CONTACTS

Andrey Shestakov, leading yacht broker of the sales department of Shestakov Yacht Sales Inc. Shestakov Yacht Sales Inc., the official representative of the Miami/Fort Lauderdale FL headquarters.

Contact details

Email: andrey@shestakovyachtsales.com

Web: shestakovyachtsales.com/en/

Telephones

USA: +1(954)274-4435

Office hours

Monday – Saturday: **9:00 - 21:00** EDT

Sunday: **closed**

Address



Harbour Towne Marina, 850 NE 3rd St,
STE 213, Dania, FL 33004