

VOYAGER — GRAND BANKS



Builder: GRAND BANKS

Year Built: 2006

Model: Cruising Yacht

Price: PRICE ON APPLICATION

Location: United States

LOA: 47' 0" (14.33m)

Beam: 15' 9" (4.80m)

Max Draft: 3' 8" (1.12m)

Our experienced yacht broker, Andrey Shestakov, will help you choose and buy a yacht that best suits your needs **VOYAGER — GRAND BANKS** from our catalogue. Presently, at Shestakov Yacht Sales Inc., we have a wide variety of yachts available on our sale's list. We also work in close contact with all the big yacht manufacturers from all over the world.

If you would like to buy a yacht **VOYAGER — GRAND BANKS** or would like help answering any questions concerning purchasing, selling or chartering a yacht, please call **+1(954)274-4435**

TABLE OF CONTENTS

TABLE OF CONTENTS	2
SPECIFICATIONS	5
Overview	5
Basic Information	6
Dimensions	6
Speed, Capacities and Weight	6
Accommodations	6
Hull and Deck Information	6
Engine Information	6
PHOTOS	7
7621746_20201012072503422_1_XLARGE	7
7621746_20201012121920151_1_XLARGE	7
7621746_20201012122840268_1_XLARGE	7
7621746_20201012122836419_1_XLARGE	7
7621746_20201012122908511_1_XLARGE	7
7621746_20201012122844439_1_XLARGE	7
7621746_20201012122852166_1_XLARGE	8
7621746_20201012163350660_1_XLARGE	8
7621746_20201012122925297_1_XLARGE	8
7621746_20201012122929304_1_XLARGE	8
7621746_20201012122933028_1_XLARGE	8
7621746_20201012122921280_1_XLARGE	8
7621746_20201012122940004_1_XLARGE	8
7621746_20201012123004323_1_XLARGE	8
7621746_20201012122856247_1_XLARGE	9
7621746_20201012122956535_1_XLARGE	9
7621746_20201012123000566_1_XLARGE	9
7621746_20201012123017079_1_XLARGE	9

7621746_20201012122228686_1_XLARGE	9
7621746_20201012122137885_1_XLARGE	9
7621746_20201012122533988_1_XLARGE	9
7621746_20201012122538088_1_XLARGE	9
7621746_20201012122118500_1_XLARGE	10
7621746_20201012122109251_1_XLARGE	10
7621746_20201012122238187_1_XLARGE	10
7621746_20201012122122213_1_XLARGE	10
7621746_20201012122254031_1_XLARGE	10
7621746_20201012122241860_1_XLARGE	10
7621746_20201012122256828_1_XLARGE	10
7621746_20201012122114454_1_XLARGE	10
7621746_20201012122249993_1_XLARGE	11
7621746_20201012122130036_1_XLARGE	11
7621746_20201012122134081_1_XLARGE	11
7621746_20201012122456894_1_XLARGE	11
7621746_20201012122514068_1_XLARGE	11
7621746_20201012122542199_1_XLARGE	11
7621746_20201012122558354_1_XLARGE	11
7621746_20201012123852353_1_XLARGE	11
7621746_20201012122153021_1_XLARGE	12
7621746_20201012122202198_1_XLARGE	12
7621746_20201012122206131_1_XLARGE	12
7621746_20201012122217982_1_XLARGE	12
7621746_20201012122231961_1_XLARGE	12
7621746_20201012123214305_1_XLARGE	12
7621746_20201012123228387_1_XLARGE	12
CONTACTS	13
Contact details	13

Telephones	13
Office hours	13
Address	13

SPECIFICATIONS

Overview

Absolutely Gorgeous GB47 Europa

Loaded with Cruising Equipment

Voyager is a beautiful example of one of Grand Banks most sought after designs. Over the past three years she's been outfitted with high end and complete cruising gear, over the top electronics and a classy 2020 Flag Blue Awlgrip paint job. She's even got a Yacht Controller for docking with a wireless handheld remote control.

The redesigned GB47 was a serious upgrade over the GB46. She's got less exterior teak and a true planing hull that will cruise easily at 20kts and max out around 25kts. She's responsive, nimble, classy and luxurious. She is is nothing like a Grand Banks of the past.

Take a close look at the long list of upgraded systems and extras in the full specs. This Europa is the complete package for a yachtsman that wants all the latest and greatest systems. This is one of those boats that you can't help but fall in love with.

The only item she is currently in need of is new canvas for her simple bimini top.

Highlights Include:

- **Caterpillar C-9 Direct Drive Engines (2079 hours)**
- **13KW Onan Genset (2226 hours)**
- **Bow and Stern Thrusters**
- **Yacht Controller Remote Control system (NEW 2018)**
- **(4) Four Raymarine Axiom Pro 12" color display w/ GPS, radar, AIS, Side Scanning Depth, Three Video Cameras, Ultrasonic Weather Sensor, and AR200 Augmented Reality System. (NEW 2020!)**
- **All Engine Data Networked to Axiom MFD's (NEW 2020)**
- **Flag Blue Awgrip Paint (NEW 2020- Originally Painted Blue at GB Factory)**
- **KVH Tracvision M3 HD TV Dome (NEW 2018)**
- **Splendid Washer/Dryer Combo**
- **Seafrost Top Loading Refrigerator/ Freezer on Flybridge**
- **Sea Recovery Aqua Whisper Watermaker**
- **Aluminum Hull Hypalon RIB w/ 20hp Mercury Outboard (NEW 2020)**
- **Fuel Polishing System**
- **Bottom Paint (NEW 2020)**
- **Underwater lights**

- **Optional Aft Flybridge Railing Included If Dinghy Storage Is Not Needed**

Basic Information

Category: Cruising Yacht

Model Year: 2006

Year Built: 2006

Country: United States

Dimensions

LOA: 47' 0" (14.33m)

LWL: 44' 1" (13.44m)

Beam: 15' 9" (4.80m)

Max Draft: 3' 8" (1.12m)

Speed, Capacities and Weight

Displacement: 101654000 Pounds

Water Capacity: 260 Gallons

Holding Tank: 77 Gallons

Fuel Capacity: 600 Gallons

Accommodations

Total Cabins: 2

Hull and Deck Information

Hull Material: Fiberglass

Engine Information

Engines: 2

Manufacturer: Caterpillar

Model: C9

Engine Type: Inboard

Fuel Type: Diesel

PHOTOS

7621746_20201012072503422_1_XLARGE



7621746_20201012121920151_1_XLARGE



7621746_20201012122840268_1_XLARGE



7621746_20201012122836419_1_XLARGE



7621746_20201012122908511_1_XLARGE



7621746_20201012122844439_1_XLARGE



7621746_20201012122852166_1_XLARGE



7621746_20201012163350660_1_XLARGE



7621746_20201012122925297_1_XLARGE



7621746_20201012122929304_1_XLARGE



7621746_20201012122933028_1_XLARGE



7621746_20201012122921280_1_XLARGE



7621746_20201012122940004_1_XLARGE



7621746_20201012123004323_1_XLARGE



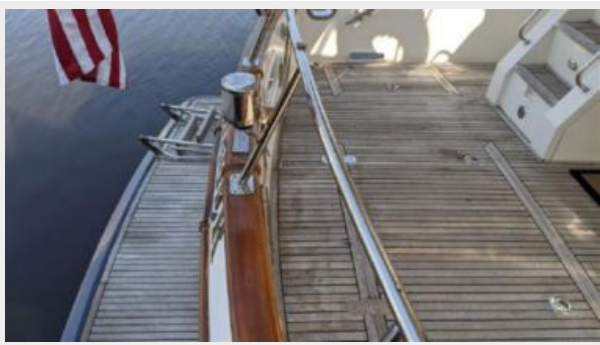
7621746_20201012122856247_1_XLARGE



7621746_20201012122956535_1_XLARGE



7621746_20201012123000566_1_XLARGE



7621746_20201012123017079_1_XLARGE



7621746_20201012122228686_1_XLARGE



7621746_20201012122137885_1_XLARGE



7621746_20201012122533988_1_XLARGE



7621746_20201012122538088_1_XLARGE



7621746_202010121222118500_1_XLARGE



7621746_202010121222109251_1_XLARGE



7621746_20201012122238187_1_XLARGE



7621746_202010121222122213_1_XLARGE



7621746_20201012122254031_1_XLARGE



7621746_20201012122241860_1_XLARGE



7621746_20201012122256828_1_XLARGE



7621746_202010121222114454_1_XLARGE



7621746_20201012122249993_1_XLARGE



7621746_20201012122130036_1_XLARGE



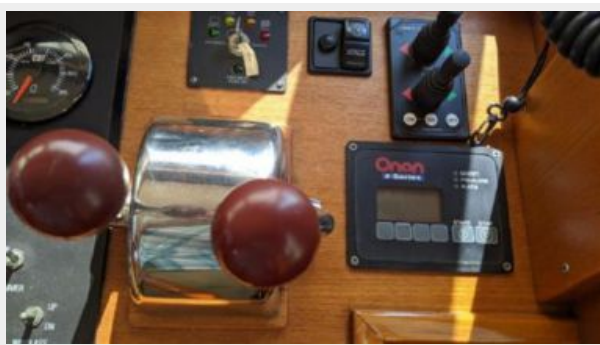
7621746_20201012122134081_1_XLARGE



7621746_20201012122456894_1_XLARGE



7621746_20201012122514068_1_XLARGE



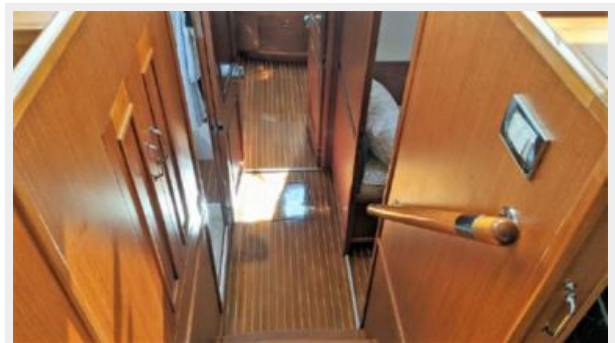
7621746_20201012122542199_1_XLARGE



7621746_20201012122558354_1_XLARGE



7621746_20201012123852353_1_XLARGE



7621746_20201012122153021_1_XLARGE



7621746_20201012122202198_1_XLARGE



7621746_20201012122206131_1_XLARGE



7621746_20201012122217982_1_XLARGE



7621746_20201012122231961_1_XLARGE



7621746_20201012123214305_1_XLARGE



7621746_20201012123228387_1_XLARGE



CONTACTS

Andrey Shestakov, leading yacht broker of the sales department of Shestakov Yacht Sales Inc. Shestakov Yacht Sales Inc., the official representative of the Miami/Fort Lauderdale FL headquarters.

Contact details

Email: andrey@shestakovyachtsales.com

Web: shestakovyachtsales.com/en/

Telephones

USA: +1(954)274-4435

Office hours

Monday – Saturday: **9:00 - 21:00** EDT

Sunday: **closed**

Address



Harbour Towne Marina, 850 NE 3rd St,
STE 213, Dania, FL 33004