

SEYHORSE — HI STAR



Builder: HI STAR

Year Built: 2003

Model: Trawler Yacht

Price: PRICE ON APPLICATION

Location: United States

LOA: 47' 0" (14.33m)

Beam: 15' 4" (4.67m)

Max Draft: 3' 8" (1.12m)

Cruise Speed: 8.5 Kts. (10 MPH)

Our experienced yacht broker, Andrey Shestakov, will help you choose and buy a yacht that best suits your needs **Seyhorse — HI STAR** from our catalogue. Presently, at Shestakov Yacht Sales Inc., we have a wide variety of yachts available on our sale's list. We also work in close contact with all the big yacht manufacturers from all over the world.

If you would like to buy a yacht **Seyhorse — HI STAR** or would like help answering any questions concerning purchasing, selling or chartering a yacht, please call **+1(954)274-4435**

TABLE OF CONTENTS

TABLE OF CONTENTS	2
SPECIFICATIONS	7
Overview	7
Basic Information	7
Dimensions	7
Speed, Capacities and Weight	8
Accommodations	8
Hull and Deck Information	8
Engine Information	8
DETAILED INFORMATION	9
MAIN DESCRIPTION	9
2003 Hi Star 470 Trawler Interior Walk Through	9
2003 Hi Star 470 Trawler Salon, Galley, Dinette	9
2003 Hi Star 470 Trawler Staterooms and Heads	10
2003 Hi Star 470 Trawler Exterior Walk Through	11
2003 Hi Star 470 Trawler Deck and Cockpit	11
2003 Hi Star 470 Trawler Flybridge	12
2003 Hi Star 470 Trawler Engine and Mechanical	12
2003 Hi Star 470 Trawler Electrical	13
2003 Hi Star 470 Trawler Electronics	14
2003 Hi Star 470 Trawler Additional Equipment	14
2003 Hi Star 470 Trawler Speed and Fuel Burn	15
2003 Hi Star 470 Trawler Exclusions	15
2003 Hi Star 470 Trawler Brokers Showing Notes	15
2003 Hi Star 470 Trawler Disclaimer	15
Exclusions	15
Disclaimer	15
PHOTOS	16

000 HR	16
101 Portside	16
102 Stern	16
103 Stbdside	16
105 Port Stern	16
104 Bow	16
107 Stern with Tender	17
108 Starboard Stern	17
109 Cockpit to Starboard	17
111 Cockpit Docking Station	17
112 Cockpit to Port	18
114 Cockpit Hatch	18
116 Starboard Sidewalk	18
115 Cockpit Hatch Open	18
117 Port Sidewalk	19
118 Bow to Aft	19
119 Bow to Port	19
120 Bow to Starboard	19
123 Pulpit	20
124 Anchor Locker	20
126 Stbrd Flybridge Walk Around	20
127 Pprt Flybridge Walk Around	20
128 Flybridge to Aft	21
129 Flybridge to Port Aft	21
130 Flybridge to Port Forward	21
131 Flybridge to Strbd Forward	21
132 Flybridge to Starboard	21
133 Flybridge to Stbrd Aft	21
136 Navigator Chair	22

135 Helm	22
137 Captain Chair	22
138 Flybridge Aft Deck to Port	22
139 Flybridge Aft Deck to Port	23
140 Flybridge Port Sidewalk	23
141 Flybride Stbrd Sidewalk	23
142 Swim Platform from Flybridge	23
201 Salon Forward	24
202 Salon to Aft	24
203 Salon to Aft Starboard	24
204 Salon to Aft Port	24
205 Salon Forward to Port	24
207 Galley to Starboard	24
209 Galley	25
210 Galley Cabinet Detail	25
211 Galley Refrigerator	25
212 Galley Microwave	25
213 Galley Sink	25
214 Galley Range Closed	25
216 Galley Oven	26
215 Galley Range Open	26
218 Dinette Table Base	26
217 Dinette	26
219 Dinette Burlwood Table Top	27
220 Salon Loft	27
221 Master Stateroom Forward	27
222 MS to Port Forward	27
223 MS to Stbrd Forward	28
224 MS to Port Aft	28

225 MS Port Locker	28
226 Master Stateroom Aft	28
227 MS to Stbrd Aft	29
229 Drawers under Master Berth	29
230 MS Stbrd Locker	29
231 Master Head	29
232 Master Head Vanity	30
233 Master Head Shower	30
234 Washer Dryer	30
240 Guest Stateroom Berth	30
242 Guest Stateroom Locker	31
241 Guest Stateroom to Port	31
243 Guest Head Vanity	31
244 Guest Head	31
245 Guest Head Shower	32
246 Guest Head Shower Partition	32
301 Helm	32
302 Port Engine Guage	32
304 Sys Monitor	33
303 Stbd Engine Guage	33
306 Raymarine RL80C	33
305 Garmin 7212	33
307 Standard Horizon GX2150	34
308 iCom IC-M504	34
310 Raymarine ST60+	34
311 Clarion Stereo	34
312 Bridge Refrig	34
313 Bridge AC	34
314 Glass Windshield w Wiper	35

315 Comrod wifi antennae	35
317 Lazzarette Access	35
316 Cockpit Control Station	35
319 Fuel Sight Glass	36
318 Steering Gear	36
320 Shore Power Retrieval	36
321 Hot Water Htr	36
322 Stbd Engine	37
323 Port Engine	37
324 Port Engine	37
325 Stbd Engine	37
326 Engine Room Fwd	38
327 Fwd of Stbd Engine	38
328 Chiller	38
329 Chiller	38
330 Generator	38
331 Generator Control Panel	38
332 Electrical Components	39
333 Engine Raycor	39
334 Oil Change	39
335 Fuel Manifold	39
336 Salon Elect Panel	39
CONTACTS	40
Contact details	40
Telephones	40
Office hours	40
Address	40

SPECIFICATIONS

Overview

Seyhorse is a well-kept 2003 Hi-Star 47' Trawler built at the Activa Marine shipyard in Taiwan. She is the "Seahorse" model, and features a large swim platform, a roomy cockpit, and wide covered side decks which make her very safe and easy to move around for docking or mooring. A large enclosed air conditioned flybridge with side decks, as well as an open aft flybridge deck provides a comfortable space for entertaining or watching the sun rise or set. An air conditioned engine room with access from the cockpit makes any engine room project bearable on a hot day. The tender is easy to launch from the swim platform with a SeaWise dinghy lift, and the full set of engine and bow and stern thruster controls in the cockpit aid in docking.

The interior of Seyhorse is beautiful satin-finished cherry wood with burlwood accents and exotic wood inlays. The craftsmanship of the joinery is really exquisite. The flybridge enclosure was replaced in 2019, a cockpit sun shade was added in 2019, and a custom bimini top was added to the flybridge aft deck in 2020. Interior soft goods were replaced in 2018.

The bottom was painted in February, 2020.

This vessel has cruised both coasts of Florida as well as the Florida Keys. The owners of Seyhorse currently live aboard full time. Seahorses are usually found in shallow tropical and temperate waters throughout the world; Seyhorse will be at home wherever you take her, and is ready for her next cruise.

Basic Information

Category: Trawler Yacht

Model Year: 2003

Year Built: 2003

Country: United States

Dimensions

LOA: 47' 0" (14.33m)

Beam: 15' 4" (4.67m)

Max Draft: 3' 8" (1.12m)

Clearance: 24' 0" (7.32m)

Speed, Capacities and Weight

Cruise Speed: 8.5 Kts. (10 MPH)

Water Capacity: 200 Gallons

Holding Tank: 50 Gallons

Fuel Capacity: 600 Gallons

Accommodations

Total Cabins: 2

Total Berths: 2

Total Heads: 2

Hull and Deck Information

Hull Material: Fiberglass

Engine Information

Engines: 2

Manufacturer: John Deere

Model: John Deere Power Tech 8.1 H6081

Engine Type: Inboard

Fuel Type: Diesel

DETAILED INFORMATION

MAIN DESCRIPTION

Seyhorse is a well-kept 2003 Hi-Star 47' Trawler built at the Activa Marine shipyard in Taiwan. She is the "Seahorse" model, and features a large swim platform, a roomy cockpit, and wide covered side decks which make her very safe and easy to move around for docking or mooring. A large enclosed air conditioned flybridge with side decks, as well as an open aft flybridge deck provides a comfortable space for entertaining or watching the sun rise or set. An air conditioned engine room with access from the cockpit makes any engine room project bearable on a hot day. The tender is easy to launch from the swim platform with a SeaWise dinghy lift, and the full set of engine and bow and stern thruster controls in the cockpit aid in docking.

The interior of Seyhorse is beautiful satin-finished cherry wood with burlwood accents and exotic wood inlays. The craftsmanship of the joinery is really exquisite. The flybridge enclosure was replaced in 2019, a cockpit sun shade was added in 2019, and a custom bimini top was added to the flybridge aft deck in 2020. Interior soft goods were replaced in 2018.

The bottom was painted in February, 2020.

This vessel has cruised both coasts of Florida as well as the Florida Keys. The owners of Seyhorse currently live aboard full time. Seahorses are usually found in shallow tropical and temperate waters throughout the world; Seyhorse will be at home wherever you take her, and is ready for her next cruise.

2003 Hi Star 470 Trawler Interior Walk Through

The interior of Seyhorse is reached through a large sliding smoked-glass door from the cockpit, which leads directly into the salon. There is a built-in sliding screen door, as well as full privacy drapes. There are three large windows on each side, with Hunter Douglas silhouette honeycomb blinds; the screened center windows open for ventilation. The headliner is vinyl. The sole is teak and holly throughout the entire vessel, and the interior paneling is satin-finished cherry wood with burlwood accents and exotic wood inlays on the doors and cabinets. Forward of the salon, the galley is to starboard on the same level. The dinette is to port, across from the galley, one step up. There is a large loft area under the windshield. The staterooms are four steps down. The guest stateroom, with ensuite head, is to port. The master stateroom, with ensuite head, is forward. A central vacuum system has a connection at the bottom of the steps, as well as in the salon.

2003 Hi Star 470 Trawler Salon, Galley, Dinette

SALON: The salon is an open space with natural light. The electrical panel, with a smoked glass

door, is to starboard above a cabinet with two shelves. There is abundant open and closed storage over the U-Line ice maker, also to starboard. A Sony Smart TV with a sound bar, on an articulating mount is to starboard in front of the windows. There is room for free standing chairs for additional seating. Bose surround sound speakers (which are not currently hooked up) are mounted throughout the salon.

The built-in settee to port was recovered in 2018 with a neutral decorator fabric, and has four storage drawers beneath, so there is no cushion removal needed to get to storage. An end table is aft of the settee, with three storage drawers.

GALLEY: The U-shaped galley on Seyhorse is to starboard, on the same level as the salon, and is open to the salon. The galley features: a 110v Whirlpool refrigerator/freezer, a built-in Samsung microwave, a stainless steel sink with a pull-out single lever faucet, a filtered drinking water faucet, a Princess three burner electric stove with oven, a built-in cutting board stove cover, neutral granite countertops and ample storage cabinets and drawers. The storage is very easy to access; some storage has access from the salon which makes good use of the space available. An ICOM VHF radio is mounted in the galley.

DINETTE: The dinette is across from the galley, to port. The neutral U-shaped settee was recovered in easy to clean leatherette in 2018. A large seat cushion was redesigned into two smaller cushions, to make an easy-to-use step up to the loft space forward of the dinette and galley. The dinette seats four adults comfortably, and is one step up from the teak and holly galley sole. The dinette table on Seyhorse has a beautiful burlwood top with exotic wood inlay. The base features three storage drawers on the galley side. There is additional storage under the dinette settee.

LOFT: Seyhorse features a large loft/deck under the front windshield. There is a removable bound Berber-style neutral colored carpet over the wood finished surface. A storage cabinet is behind the galley area, accessible only from the loft. The area has been used for storage, but also for additional sleeping bag/air mattress accommodations. The front windshield has an exterior Sunbrella cover.

2003 Hi Star 470 Trawler Staterooms and Heads

The two staterooms, which can accommodate four, are four steps down from the galley. The steps have safe non-skid surfaces.

MASTER STATEROOM: The master stateroom, which is forward, features a centerline queen berth with two drawers. The bed hinges for easy access to storage and the systems beneath the storage area. There is natural light from the hatch over the berth, which has a magnetic screen/room darkening cover. There are four LED ceiling lights, courtesy rope lights, and two reading lights. Storage is in the drawers under the berth, the cedar lined hanging lockers to both port and starboard, and the wall mounted cabinets on both sides of the berth. The master stateroom on Seyhorse also features: a teak and holly sole, reverse cycle AC/Heat control, a

mirrored door on the starboard hanging locker, a mounted Samsung HD flat-screen TV, a CO detector, an open storage cubby, a mounted brass clock, and an ensuite head to starboard.

MASTER HEAD: The roomy ensuite master head is to starboard on Seyhorse, and features: a mirrored ceiling, an opening portlight over the sink/vanity, neutral granite vanity countertop, a sink with single lever faucet, three LED lights including one in the shower, separate stall shower with a bi-fold door and teak floor grate, Tecma electric head, mirrored medicine cabinet with two shelves, Tankwatch 4 holding tank monitor, two hand towel rings, a shower towel bar, a door hook, a neutral tiled sole, an AC vent, and a double doored storage cabinet with two shelves. The GE Spacemaker separate washer and dryer are located in a cabinet with a louvered teak door behind the toilet.

GUEST STATEROOM: Seyhorse has a comfortable guest stateroom to port with a full berth on the bulkhead. The guest stateroom also features: a pocket door that matches the other doors, a two drawer end table, three LED lights and 2 reading lights, a teak and holly sole, an opening portlight, a CO detector, a cedar lined hanging locker, a mounted Samsung HD flat-screen TV, storage under the berth, reverse cycle AC/heat controlled by the master stateroom, and an ensuite head.

GUEST HEAD: The ensuite guest head on Seyhorse is forward in the guest stateroom and features: a mirrored ceiling, an opening portlight, neutral granite vanity countertop, a sink with single lever faucet, two LED lights, a folding shower door on a track in the ceiling that creates a stall shower with a teak floor grate, Tecma electric head, mirrored medicine cabinet, and a neutral tiled sole.

2003 Hi Star 470 Trawler Exterior Walk Through

Seyhorse can be boarded by the transom doors both port and starboard, or by the transom door from the teak swim platform which all provide access directly into the fully covered cockpit. The foredeck can be accessed from the wide covered walkways both port and starboard. A curved staircase with teak steps lead to the flybridge. The aft deck of the flybridge is open, and has a custom bimini top (2020) which helps keep the stairs and cockpit dry and shaded. There are walkways with railings on both the port and starboard sides that run the full length of the fully enclosed flybridge (easy access to antennas and window cleaning). A ladder leads to the hard-top roof of the flybridge.

2003 Hi Star 470 Trawler Deck and Cockpit

The integrated teak swim platform has a manual SeaWise dinghy lift, a propane locker, a two-step ladder to the transom door into the cockpit, a swim ladder, and underwater lights. Access to the throttle, transmission, and bow and stern thruster controls is located in the cockpit cabinet beneath the stairway to the flybridge.

The cockpit on Seyhorse features: a custom sunshade from the roof to the transom (2019), a Sovereign fixed mount propane grill, a hot/cold transom shower/wash down, teak curved staircase to the flybridge, a Glendening Cable Master for a 50 amp power cord, a LifeSling 2, and a full set of engine and bow and stern thruster controls for easy docking. The cockpit floor has an electric hatch that provides access to the lazarette and the climate controlled engine room.

The foredeck of Seyhorse is accessed from the wide covered walkways with high railings on both the port and starboard sides. There is a 50 amp shore power connector on the bow, as well as an anchor wash down, a Maxwell electric windlass (new motor 2019), and a Rocna 25 (55 lb) anchor with all chain rode and bridle as well as a Danforth anchor with chain and rode complete the ground tackle. A LifeSling 2 is mounted on the rail of the bow.

2003 Hi Star 470 Trawler Flybridge

Aft of the enclosed flybridge on Seyhorse is an open seating area, large enough for two chairs and the covered top loading chest freezer. A custom bimini was installed (2020) for additional sun and rain protection. A stainless steel ladder leads to the flybridge hardtop. There are walkways with railings on both port and starboard side of the enclosed flybridge.

The flybridge on Seyhorse is set up for both cruising and entertaining. The full enclosure on the flybridge was replaced in 2019 with Macrolon Maine 5 Polycarb windows, which conveniently clip onto the hard-top to keep open. There are two white vinyl chairs for the captain and navigator at the helm station. There is a settee to starboard with storage, as well as a wet bar with a Deawoo refrigerator, and the flybridge AC controls. A large L-shaped seating area with a fiberglass table is to port and aft. The settees were recovered in 2019 with Sunbrella "Tuxedo" fabric. A free-standing matching chair completes the seating for the entertainment area. The central vacuum system has a connection on the flybridge.

2003 Hi Star 470 Trawler Engine and Mechanical

Twin John Deere Power Tech diesels model 8.1H 6081 380 hp.@2300 rpm

Current hours: 1357 on starboard and 1365 on port engines

Raw Water pumps and hoses on both engines (2017)

Alternators on both engines (2017)

Engine and generator impellers replaced 2020

Hynautic engine controls

SidePower® Bow and Stern Thrusters (Stern Thruster has new motor 2017)

Reverso Oil change system for both engines and generator

Racor filters with dual Filters for both engines that have a manual valve to switch if necessary

Easy access sea strainers

Sight glasses on all tankage

Air Separators (2014)

Tides Marine dripless shaft seals (2014)

Racor fuel/water separators (2013)

Glendenning engine synchronizers

Fireboy system

Reverse Osmosis Water Purification System

20 Gal Hot water heater (2015)

2003 Hi Star 470 Trawler Electrical

Onan 13.5 KW Generator with 2046 hours

Fiberglass battery boxes

Xantrex 3012 Inverter/Charger (2016)

Pronautic 12.50P charger (2019)

Separate Engine and Generator start batteries

(4) Marine Air A/C systems including one in the engine room with dual 110 pumps on one Groco Strainer

Separate Bow and Stern Thruster batteries (Bow Thruster battery 2017)

Separate battery and charger for flybridge electronics located in flybridge console

Glass windshield with washer/wiper on flybridge

Galvanic Isolator

2 A/C blowers on bridge with compressors (2014) in engine room

Batteries: 2-8D Starter, 2-8D House, 1-4D Inverter, 1-4D Stern Thruster, 1-4D- Bow Thruster, 1-4D Generator

Bridge has its own independent 12 volt system with breaker panel isolated from the boat, including independent AGM battery and charger

2003 Hi Star 470 Trawler Electronics

Garmin 7212 Multi-Function Display Chartplotter with AIS and video camera (2014)

Raymarine EV400 Autopilot (2017)

Intellian HDTV Satellite Receiver

Wi-Fi Extender and Router

Raymarine Pathfinder 48 mile Radar RL80C

Raymarine ST60 Digital depth

ACR Spotlight

Compass

Standard Matrix VHF radio with AIS, connected to Garmin 7212

ICOM 504 VHF

Intercom system

Clarion Stereo with XM Radio and CD

2003 Hi Star 470 Trawler Additional Equipment

AB 3.60VS Hypalon 11.8 ft. Inflatable Dinghy with custom Sunbrella upholstery (2018)

Evinrude 2 stroke 30 hp motor (2013) with wing (fuel injectors 2017)

2003 Hi Star 470 Trawler Speed and Fuel Burn

Cruising Speed: 8.5 kn @ 1500 RPM

Hull Speed: 10 kn @ 2000 RPM

Fuel Burn: 8 GPH @ 8.5 kn with generator running

2003 Hi Star 470 Trawler Exclusions

Sellers' personal items do not convey with the sale of the vessel. Specific personal items excluded include: Oriental rug in the salon, Oriental rug in the Master Stateroom, artwork, coffee table in the salon, George Forman grill, Cuisinart air fryer, Keurig coffeemaker, dehumidifier, and the two white folding chairs.

2003 Hi Star 470 Trawler Brokers Showing Notes

Please be advised that all showings require advance scheduling, since the sellers are living aboard Seyhorse full-time.

2003 Hi Star 470 Trawler Disclaimer

The Company offers the details of this vessel in good faith but cannot guarantee or warrant the accuracy of this information nor warrant the condition of the vessel. A buyer should instruct his agents, or his surveyors, to investigate such details as the buyer desires validated. This vessel is offered subject to prior sale, price change, or withdrawal without notice.

Exclusions

Owner's personal belongings.

Disclaimer

The Company offers the details of this vessel or yacht in good faith but cannot guarantee or warrant the accuracy of this information nor warrant the condition of the vessel. A buyer should instruct his representatives, agents, or his surveyors, to investigate such details as the buyer desires validated. This vessel or yacht is offered subject to prior sale, price change, or withdrawal without notice.

PHOTOS

000 HR



101 Portside



102 Stern



103 Stbdside



105 Port Stern



104 Bow



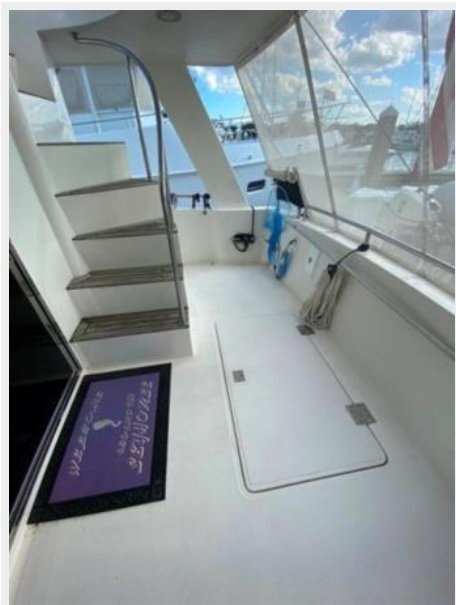
107 Stern with Tender



108 Starboard Stern



109 Cockpit to Starboard



111 Cockpit Docking Station



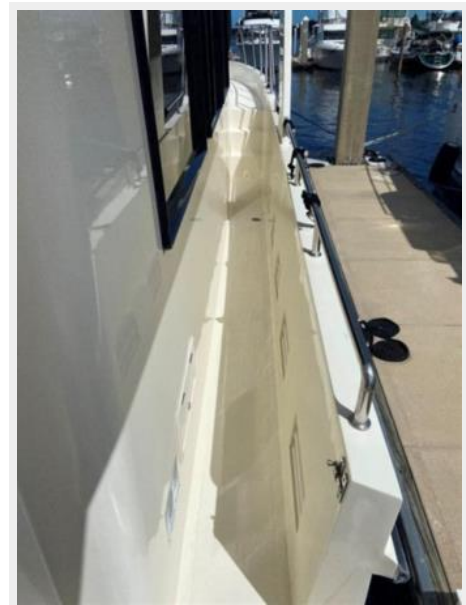
112 Cockpit to Port



114 Cockpit Hatch



116 Starboard Sidewalk



115 Cockpit Hatch Open



117 Port Sidewalk



118 Bow to Aft



119 Bow to Port



120 Bow to Starboard



123 Pulpit



124 Anchor Locker



126 Stbrd Flybridge Walk Around



127 Pprt Flybridge Walk Around



128 Flybridge to Aft



129 Flybridge to Port Aft



130 Flybridge to Port Forward



131 Flybridge to Strbd Forward



132 Flybridge to Starboard



133 Flybridge to Stbrd Aft



135 Helm



136 Navigator Chair



137 Captain Chair



138 Flybridge Aft Deck to Port



139 Flybridge Aft Deck to Port



140 Flybridge Port Sidewalk



141 Flybride Stbrd Sidewalk



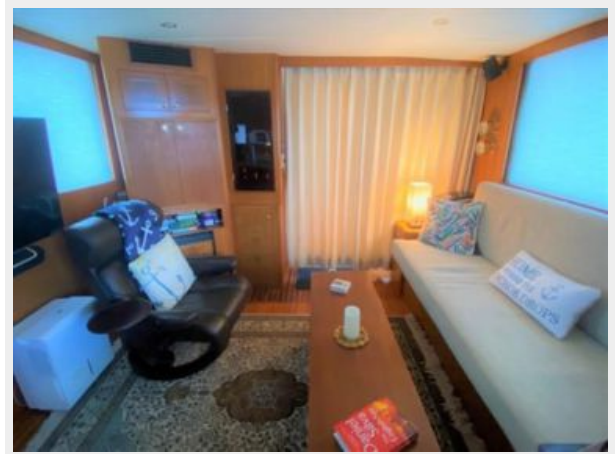
142 Swim Platform from Flybridge



201 Salon Forward



202 Salon to Aft



203 Salon to Aft Starboard



204 Salon to Aft Port



205 Salon Forward to Port



207 Galley to Starboard



209 Galley



210 Galley Cabinet Detail



211 Galley Refrigerator



212 Galley Microwave



213 Galley Sink



214 Galley Range Closed



215 Galley Range Open



216 Galley Oven



217 Dinette



218 Dinette Table Base



219 Dinette Burlwood Table Top



220 Salon Loft



221 Master Stateroom Forward



222 MS to Port Forward



223 MS to Stbrd Forward



224 MS to Port Aft



225 MS Port Locker



226 Master Stateroom Aft



227 MS to Stbrd Aft



229 Drawers under Master Berth



230 MS Stbrd Locker



231 Master Head



232 Master Head Vanity



233 Master Head Shower



234 Washer Dryer



240 Guest Stateroom Berth



241 Guest Stateroom to Port



242 Guest Stateroom Locker



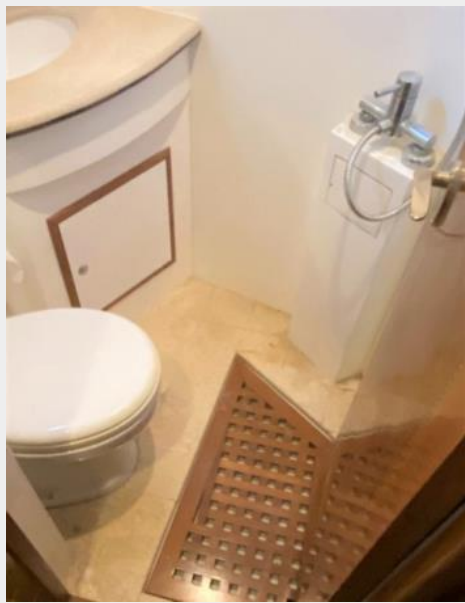
243 Guest Head Vanity



244 Guest Head



245 Guest Head Shower



246 Guest Head Shower Partition



301 Helm



302 Port Engine Guage



303 Stbd Engine Guage**304 Sys Monitor****305 Garmin 7212****306 Raymarine RL80C**

307 Standard Horizon GX2150



308 iCom IC-M504



310 Raymarine ST60+



311 Clarion Stereo



312 Bridge Refrig



313 Bridge AC



314 Glass Windshield w Wiper



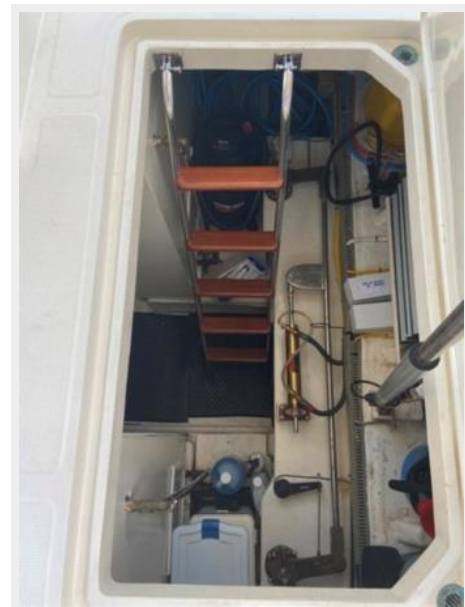
315 Comrod wifi antennae



316 Cockpit Control Station



317 Lazzaretto Access



318 Steering Gear



319 Fuel Sight Glass



320 Shore Power Retrieval



321 Hot Water Htr



322 Stbd Engine



323 Port Engine



324 Port Engine



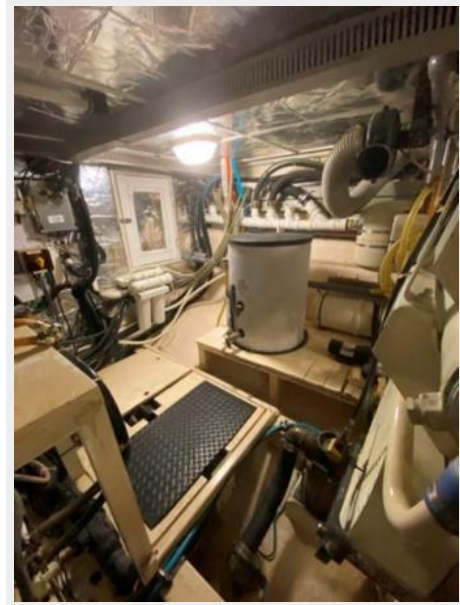
325 Stbd Engine



326 Engine Room Fwd



327 Fwd of Stbd Engine



328 Chiller



329 Chiller



330 Generator



331 Generator Control Panel



332 Electrical Components



333 Engine Raycor



334 Oil Change



335 Fuel Manifold



336 Salon Elect Panel



CONTACTS

Andrey Shestakov, leading yacht broker of the sales department of Shestakov Yacht Sales Inc. Shestakov Yacht Sales Inc., the official representative of the Miami/Fort Lauderdale FL headquarters.

Contact details

Email:
andrey@shestakovyachtsales.com

Web: shestakovyachtsales.com/en/

Telephones

USA: **+1(954)274-4435**

Office hours

Monday – Saturday: **9:00 - 21:00 EDT**

Sunday: **closed**

Address



Harbour Towne Marina, 850 NE 3rd St,
STE 213, Dania, FL 33004