

MOONLIGHT — DEFEVER



Builder: DEFEVER

Year Built: 1988

Model: Trawler Yacht

Price: PRICE ON APPLICATION

Location: United States

LOA: 53' 0" (16.15m)

Beam: 16' 6" (5.03m)

Min Draft: 4' 8" (1.42m)

Max Draft: 5' 4" (1.63m)

Cruise Speed: 9 Kts. (10 MPH)

Max Speed: 15 Kts. (17 MPH)

Our experienced yacht broker, Andrey Shestakov, will help you choose and buy a yacht that best suits your needs **Moonlight — DEFEVER** from our catalogue. Presently, at Shestakov Yacht Sales Inc., we have a wide variety of yachts available on our sale's list. We also work in close contact with all the big yacht manufacturers from all over the world.

If you would like to buy a yacht **Moonlight — DEFEVER** or would like help answering any questions concerning purchasing, selling or chartering a yacht, please call **+1(954)274-4435**

TABLE OF CONTENTS

TABLE OF CONTENTS	2
SPECIFICATIONS	7
Overview	7
Basic Information	7
Dimensions	7
Speed, Capacities and Weight	7
Accommodations	7
Hull and Deck Information	8
Engine Information	8
DETAILED INFORMATION	9
MAIN DESCRIPTION	9
53' DeFever Overview	9
53' DeFever Vessel Walkthrough	9
53' DeFever Accommodations	9
53' DeFever Salon	9
53' DeFever Galley	10
53' DeFever Dining	10
53' DeFever Master Stateroom	10
53' DeFever Mid Guest Stateroom	10
53' DeFever Forward Guest Stateroom	11
53' DeFever Laundry	11
53' DeFever Pilothouse	11
53' DeFever Flybridge	11
53' DeFever Aftdeck	11
53' DeFever Audio/Visual Equipment	11
53' DeFever Electronics	12
53' DeFever Electrical System	12
53' DeFever Engine/Mechanical Equipment	12

53' DeFever Deck Equipment	13
53' DeFever Safety and Fire Protection	14
53' DeFever Exclusions	14
DISCLAIMER	14
Exclusions	14
Disclaimer	14
PHOTOS	15
2	15
1	15
3	15
4	15
6	16
5	16
7	16
8	16
9	17
10	17
11	17
12	17
13	18
14	18
15	18
16	18
17	18
18	18
19	19
20	19
21	19
22	19

23	19
24	19
25	20
26	20
27	20
28	20
29	20
30	20
31	21
32	21
33	21
34	21
35	21
36	21
37	22
38	22
39	22
40	22
41	22
42	22
43	23
44	23
45	23
46	23
47	23
48	23
49	24
50	24
51	24

52	24
54	24
53	24
55	25
56	25
57	25
58	25
60	26
59	26
61	26
62	26
63	27
64	27
65	27
66	27
67	28
68	28
69	28
70	28
71	28
72	28
73	29
74	29
75	29
76	29
77	29
78	29
79	30
80	30

82	30
81	30
83	30
84	30
85	31
86	31
87	31
88	31
89	31
90	31
CONTACTS	32
Contact details	32
Telephones	32
Office hours	32
Address	32

SPECIFICATIONS

Overview

Moonlight is a 1988 53' DeFever in good condition. She offers twin Caterpillar 3208 main engines, two Onan generators, 6'10" headroom in the engine room, bowthruster, hinged Radar arch and a three stateroom layout, each with an ensuite head with enclosed shower. With her attainable 16' height, she is Great Loop capable.

Basic Information

Category: Trawler Yacht

Model Year: 1988

Year Built: 1988

Country: United States

Dimensions

LOA: 53' 0" (16.15m)

Beam: 16' 6" (5.03m)

Min Draft: 4' 8" (1.42m)

Max Draft: 5' 4" (1.63m)

Clearance: 16' 0" (4.88m)

Speed, Capacities and Weight

Cruise Speed: 9 Kts. (10 MPH)

Max Speed: 15 Kts. (17 MPH)

Displacement: 56000 Pounds

Water Capacity: 220 Gallons

Holding Tank: 30 Gallons

Fuel Capacity: 800 Gallons

Accommodations

Total Cabins: 3

Total Berths: 3

Total Heads: 3

Hull and Deck Information

Hull Material: Fiberglass

Engine Information

Engines: 2

Manufacturer: Caterpillar

Model: 3208

Engine Type: Inboard

Fuel Type: Diesel

DETAILED INFORMATION

MAIN DESCRIPTION

Moonlight is a 1988 53' DeFever in good condition. She offers twin Caterpillar 3208 main engines, two Onan generators, 6'10" headroom in the engine room, bowthruster, hinged Radar arch and a three stateroom layout, each with an ensuite head with enclosed shower. With her attainable 16' height, she is Great Loop capable.

53' DeFever Overview

Moonlight is a 1988 53' DeFever in good condition. She offers twin Caterpillar 3208 main engines, two Onan generators, 6'10" headroom in the engine room, bowthruster, hinged Radar arch and a three stateroom layout, each with an ensuite head with enclosed shower. With her attainable 16' height, she is Great Loop capable.

53' DeFever Vessel Walkthrough

Entering the salon through the double aft doors from the covered aftdeck, you will find a wet bar/cabinet and stairs to the master stateroom and engine room starboard aft, benchseat to starboard, entertainment center starboard forward, the galley port forward, dining table to port and L-shaped seating port aft. Walk forward into the pilothouse and either walk down the starboard forward stairs to the guest staterooms or walk up the internal stairs to the flybridge.

The headroom in the salon is 6'6", 6'1" in the master stateroom, 6'2" in the master stateroom shower, 6'4" in the mid guest stateroom, 6'2" in the mid guest stateroom shower, 6'6" in the forward guest stateroom, 6'2" in the forward guest stateroom shower and 6'8" on the flybridge. The master stateroom berth is 6'6" long, the mid guest stateroom berth is 6'7" long and the forward guest stateroom berths are 6'6" long.

53' DeFever Accommodations

Moonlight offers a full beam master stateroom aft with a centerline queen size berth and an ensuite head with enclosed shower, an amidships guest stateroom with a queen size berth and an ensuite head and a forward guest stateroom with v-berth and ensuite head with enclosed shower.

53' DeFever Salon

The salon offers a wetbar/storage cabinetry and stairs to the master stateroom and engine room

starboard aft, a benchseat with storage to starboard, entertainment center starboard forward, L-shaped seating with storage port aft, dining table to port, double teak and glass doors to the aftdeck, teak & holly sole, opening window on each side, blinds and same level access to the pilothouse.

53' DeFever Galley

The galley is port forward in the salon.

- GE Profile refrigerator/freezer
- Modern Maid 4-burner electric cooktop and oven
- Rival microwave oven
- Frigidaire dish washer
- Corian countertop with a large molded-in sink
- Seagull filtered water system
- Storage cabinets and drawers
- Opening side window
- Teak & Holly sole

53' DeFever Dining

Dining space is available at the salon table, which has an insert to accommodate up to eight people.

53' DeFever Master Stateroom

The full beam master stateroom aft offers a centerline queen size berth, night stands, benchseat with storage, hanging lockers, storage cabinets and drawers, large locker under the stairs, 6 portlights, vanity/desk, reading lights, teak & holly sole and ensuite head with enclosed shower.

53' DeFever Mid Guest Stateroom

The mid guest stateroom is amidships and offers a queen size berth, 2 portlights with curtains, hanging locker, nightstand, storage drawers, reading lights, vanity/desk, teak & holly sole and an ensuite head with enclosed shower.

53' DeFever Forward Guest Stateroom

The forward guest stateroom offers a v-berth with insert, 3 portlights, overhead hatch, reading lights, teak & holly sole, hanging locker, vanity/desk and ensuite head with enclosed shower.

53' DeFever Laundry

- Maytag washer
- Maytag dryer

53' DeFever Pilothouse

The pilothouse is on the same level as the salon and galley and offers a full helm with storage underneath, side deck access door on each side, stairs to the flybridge, a benchseat with storage, cabinets and drawers, teak & holly sole and stairs to the guest staterooms.

53' DeFever Flybridge

The flybridge offers a bimini (2017), full Eisenglass enclosure, hinged Radar arch, non-skid deck, wrap-around seating with storage to port, benchseat with storage to starboard, full helm with storage underneath, Todd helmseat, hatch and ladder to the aftdeck, tender chocks and a Marquipt 800 LB tender davit.

53' DeFever Aftdeck

The covered aftdeck offers a non-skid deck, same level access to each side deck, transom door, teak cap rail, 3 teak chairs and two tables and two teak & glass doors to the salon.

53' DeFever Audio/Visual Equipment

- LG flat screen TV in the salon
- LG DN 798 DVD/CD player in the salon
- Sony STR-DE 185 receiver in the salon
- Polk Audio interior speakers
- Pioneer exterior speakers

53' DeFever Electronics

- Raymarine Radar
- Raymarine C90W multi-function display on the flybridge
- Raymarine ST60+ depth sounder in the pilothouse
- Raytheon RC520 chart plotter on the flybridge
- Icom IC-M500 VHF on the flybridge
- Icom IC-M120 VHF in the pilothouse
- Datamarine Corinthian II depth sounder on the flybridge
- Ritchie Powerdamp magnetic compass on the flybridge
- Boston clock and barometer in the pilothouse

53' DeFever Electrical System

- Onan 15 kW generator with approximately 1,159 hours
- Onan 7.5 kW generator with approximately 1,380 hours
- Guest battery switches
- 50 amp shore power cord
- Charles 40 amp battery charger
- Acme transformer
- 4 X Survivor 8D batteries (2 new in 2019, 2 new in 2020)
- 12 vdc outlet on the flybridge
- Shore power cord 50-30 amp splitter

53' DeFever Engine/Mechanical Equipment

53' DeFever Engine/Mechanical Equipment

- Twin Caterpillar 3208 375 HP main engines with approximately 2,367 hours
- Teleflex engine controls

-
- VDO gauges
 - Hynautic hydraulic steering system
 - Fuel manifold
 - Dual Racor 75/1000FG fuel filters for each main engine
 - Racor 500FG fuel filter for each generator
 - Bennett trim tabs
 - Lewmar bowthruster
 - Marine Air Systems reverse cycle air conditioning/heating system (5 units)
 - Raritan 19.9 gallon water heater
 - Groco PST-3 fresh water pressure storage tank (2019)
 - 3 X Jabsco electric heads

53' DeFever Deck Equipment

- Maxwell Nilsson anchor windlass with foot control
- Stainless steel ploy anchor
- Danforth spare anchor
- Stainless steel deck hardware
- Stainless steel fender racks
- Teak cap rail on stainless steel stanchions and teak toe rail
- Non-skid deck
- Foredeck benchseat with storage
- Boarding gate on each side
- Marquipt Tide-Ride gangway
- Marquipt 800 LB tender davit
- Stainless steel and teak ladder to the swimplatform

-
- Teak swimplatform
 - Stainless steel swim ladder
 - Bottom stripped, barrier coated and painted in 2017 and painted most recently in 2020

53' DeFever Safety and Fire Protection

- Fireboy Halon 1301 engine room fire suppression system
- Fire extinguishers

53' DeFever Exclusions

- Sellers' personal belongings
- Artwork
- Brass lamp in the salon
- Turtle centerpiece on salon dining table
- Coral artwork above master stateroom berth

DISCLAIMER

The Company offers the details of this vessel in good faith but cannot guarantee or warrant the accuracy of this information nor warrant the condition of the vessel. A buyer should instruct his agents, or his surveyors, to investigate such details as the buyer desires validated. This vessel is offered subject to prior sale, price change, or withdrawal without notice.

Exclusions

Owner's personal belongings.

Disclaimer

The Company offers the details of this vessel or yacht in good faith but cannot guarantee or warrant the accuracy of this information nor warrant the condition of the vessel. A buyer should instruct his representatives, agents, or his surveyors, to investigate such details as the buyer desires validated. This vessel or yacht is offered subject to prior sale, price change, or withdrawal without notice.

PHOTOS

1



2



3



4



5



6



7



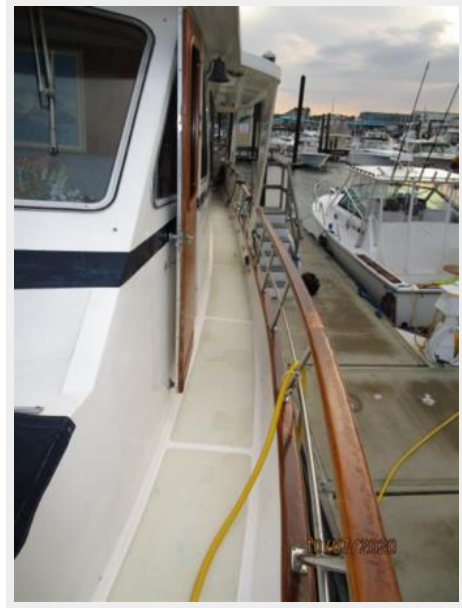
8



9



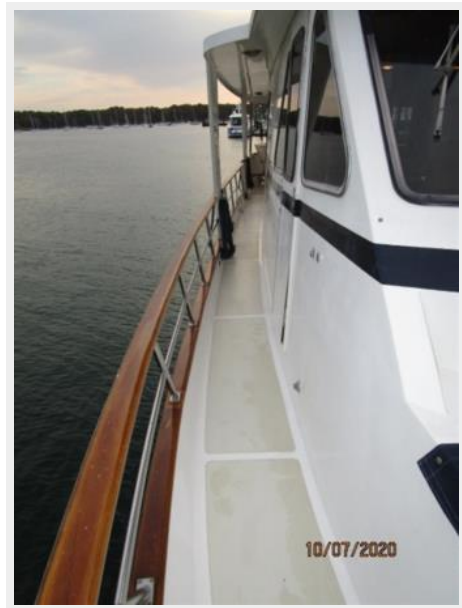
10



11



12



13



14



15



16



17



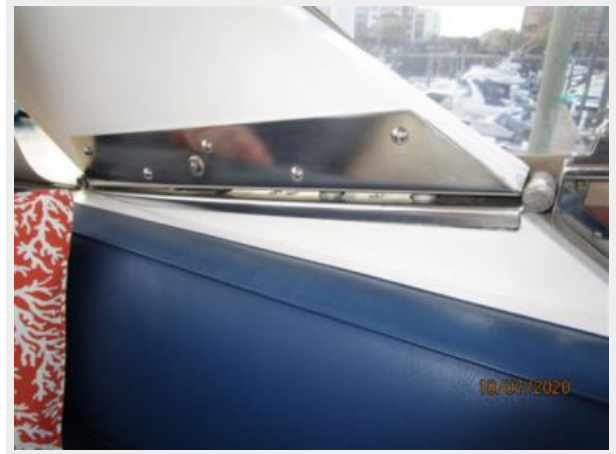
18



19



20



21



22



23



24



25



26



27



28



29



30



31



32



33



34



35



36



37



38



39



40



41



42



43



44



45



46



47



48



49



50



51



52



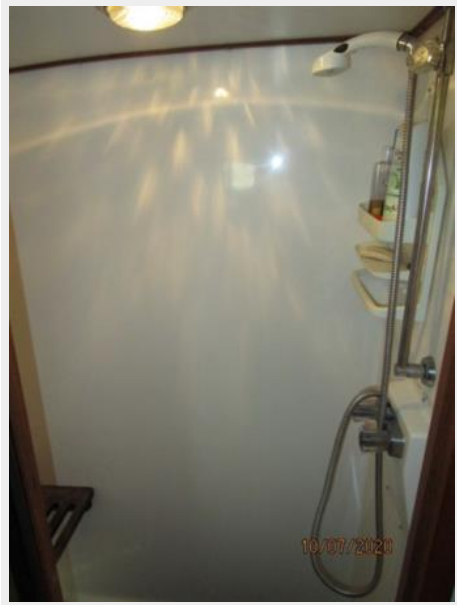
54



53



55



56



57



58



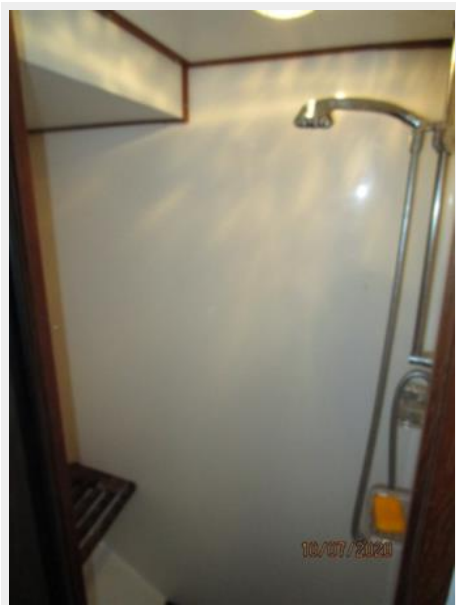
59



60



61



62



63



64



65



66



67



68



69



70



71



72



73



74



75



76



77



78



79



80



81



82



83



84



85



86



87



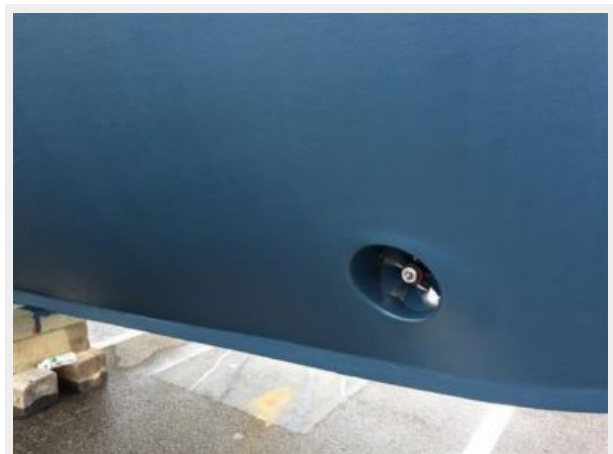
88



89



90



CONTACTS

Andrey Shestakov, leading yacht broker of the sales department of Shestakov Yacht Sales Inc. Shestakov Yacht Sales Inc., the official representative of the Miami/Fort Lauderdale FL headquarters.

Contact details

Email: andrey@shestakovyachtsales.com

Web: shestakovyachtsales.com/en/

Telephones

USA: +1(954)274-4435

Office hours

Monday – Saturday: **9:00 - 21:00** EDT

Sunday: **closed**

Address



Harbour Towne Marina, 850 NE 3rd St,
STE 213, Dania, FL 33004