

ENDLESS SUMMER — SEA RAY



Судостроитель: SEA RAY

Год постройки: 2012

Модель: Aft Cockpit

Цена: ЦЕНА ЯХТЫ ПО ЗАПРОСУ

Местонахождение: United States

Длина общая: 54' 0" (16.46m)

Ширина: 15' 3" (4.65m)

Макс. осадка: 4' 2" (1.27m)

Купить **Endless Summer — SEA RAY** а также выбрать подходящую вам яхту из нашего каталога яхт вам поможет опытный яхтенный брокер Андрей Шестаков. На сегодняшний день компания **Shestakov Yacht Sales Inc.** имеет большое количество яхт в собственном списке продаж, а также тесно сотрудничает со всеми крупными яхтенными производителями по всему миру.

Для того чтобы купить яхту **Endless Summer — SEA RAY** а также проконсультироваться по любому вопросу связанному с покупкой, продажей, чартером яхт позвоните по телефону **+7(918)465-66-44**.

ОГЛАВЛЕНИЕ

ОГЛАВЛЕНИЕ	2
ХАРАКТЕРИСТИКИ	5
Обзор	5
Основная информация	9
Размеры	10
Скорость, вместимость и масса	10
Размещение	10
Корпус и палуба	10
Информация о двигателе	10
ФОТОГРАФИИ	11
IMG_2250	11
IMG_0121	11
IMG_1852	11
IMG_1853	11
IMG_1854	11
IMG_1859	11
IMG_1861	12
IMG_1858	12
IMG_1844	12
IMG_1786	12
IMG_2242	13
IMG_1847	13
54 9	13
54 18	13
54 2	13
54 17	13
54 3	14
54 4	14

54 7	14
54 5	14
54 6	14
54 24	14
54 25	15
54 14	15
54 10	15
54 19	15
IMG_1878	15
54 11	15
54 12	16
54 13	16
54 20	16
54 22	16
54 23	16
IMG_1862	16
engine1	17
engine2	17
engine3	17
engine4	17
engine5	17
IMG_1780	17
IMG_1782	18
IMG_1783	18
IMG_1785	18
prop1	18
prop2	18
prop3	18
IMG_0127	19

IMG_0128	19
КОНТАКТЫ	20
Контактная информация	20
Телефоны	20
Время работы	20
Адрес	20

ХАРАКТЕРИСТИКИ

Обзор

Endless Summer has June 2020 1,000 hours service completed. October 2020 new bottom paint, prop speed, full wax and detail! Additional Specs, Equipment and Information: SpecsHull Shape: Semi-DisplacementDimensionsLOA: 54 ft 9 inBeam: 15 ft 3 inMaximum Draft: 4 ft 2 inDisplacement: 46901 lbsDeadrise: 21 ° at TransomDry Weight: 50000 lbsEnginesEngine 1:Engine Brand: CumminsYear Built: 2012Engine Model: Cummins QSC-600 DTSEngine Type: InboardEngine/Fuel Type: DieselLocation: StarboardEngine Hours: 554Drive Type: Pod DriveEngine Power: 576 HPEngine 2:Engine Brand: CumminsYear Built: 2012Engine Model: Cummins QSC-600 DTSEngine Type: InboardEngine/Fuel Type: DieselLocation: PortEngine Hours: 600Drive Type: Pod DriveEngine Power: 576 HPTanksFresh Water Tanks: 1 (150 Gallons)Fuel Tanks: 1 (600 Gallons)Holding Tanks: 1 (68 Gallons)AccommodationsNumber of single berths: 6Number of heads: 2ElectronicsPlotterDVD playerTV setRadarNavigation centerAutopilotLog-speedometerCD playerGPSVHFDepthsounderRadioCockpit speakersCompassInside EquipmentSea water pumpDeep freezerAir conditioningElectric bilge pumpHot waterMarine headHeatingRefrigeratorMicrowave ovenWashing machineBattery chargerBow thrusterElectrical EquipmentShore power inletGeneratorOutside Equipment/ExtrasTeak sidedecksSwimming ladderCockpit showerCockpit tableCockpit cushionsTeak cockpit

Manufacturer Provided Description

The Sea Ray 540 Sundancer is sure to earn jealous stares from the competition because it once again redefines what a modern express cruiser should be: sleek and distinctive exterior; inviting and thoughtful interior; flexible and intuitive entertaining spaces; and innovative features and amenities.

Key Features

- Cummins MerCruiser QSC 600 diesel engines with Zeus pod drives
- Zeus Drive System includes Skyhook Station-Keeper technology
- SmartCraft instrumentation and VesselView display
- One-piece bilge access service hatch.
- Standard dual Raymarine E120 widescreen units with 4-kW high definition radar
- Cockpit convertible seat lounge
- Interior LED Lighting
- Sirius satellite receiver with antenna (N/A outside N. America)
- Salon 32" flatscreen TV.
- Fold-out salon sofa sleeper conversion.
- Fiberglass hardtop with enclosure.
- Isolation transformer.
- Water manifold system.

- Oil changer system for engines and generator
- 68-Gallon holding tank with dockside pump-out.
- Sea Ray Owners Club membership (available in USA and Canada).

Engine NotesMAN also available.

Cockpit

- Beverage Holders (11)
- Carpet Liner, Snap-In - Cockpit
- Door, Cabin Entry w/Color-Matched Frame & Tempered/Tinted Glass (Sliding & Lockable w/Screen)
- Door, Transom - Acrylic w/Stainless- Steel Frame
- Floor Liner, Self-Bailing Fiberglass w/Gas-Assisted Engine Room Service Hatch
- Handrails, 316 Stainless Steel
- Hardtop, Fiberglass w/Retractable Sunroof, Overhead Lighting & Electronic Dimmer
- Icemaker, 120V
- Lighting, 24V LED
- Outlet, 120V GFI Protected
- Outlet, 24V Accessory
- Outlet, Cable TV
- Seating, Aft - L-Shaped w/Fiberglass Storage Bases & Hinged Cushions
- Seating, Helm (2) w/Armrests, Reclining Backrests, Teak Footrests, Heavy-Duty Adjustable Pedestals & Pivoting Fiberglass Base
- Seating, Starboard Lounger - Forward
- Ship's Bell
- Steps, Boarding (Molded-In) - Starboard
- Steps, Molded Deck Access (From Transom)
- Stereo, Sony - 12V AM/FM:- Single CD Player- Sirius Satellite Receiverw/Antenna- iPod Interface w/Docking Station- MP3 Port- Amplifier, Subwoofer, Speakers (4)- Digital Cockpit Remote Control
- Storage, Side Panel - Port Cockpit
- Sun Pad, Aft Cockpit Conversion w/Upper & Lower Storage Below
- Table, Cockpit - Fiberglass
- Wet Bar w/Fiberglass Sink, Faucet, Stainless-Steel Handrail, Solid-Surface Countertop, Trash Receptacle w/Trash Chute & Carry-On Cooler - Starboard

Cabin

- Blinds, Silver Alloy
- Carbon Monoxide Monitors
- Carpet Runners, Interior (Sunbrella)
- Carpet, 55-Ounce 100% Stainmaster BCF Nylon w/Dupont Advanced Teflon Repel System
- Doors, High-Gloss Solid Wood

- Handrails, Stainless Steel
- Lighting, 120V LED
- Lighting, 24V Indirect LED
- Lighting, 24V LED
- Outlet & Switch Plates - Polished Chrome Finish
- Outlet, 24V Accessory
- Outlets, 120V GFI Protected
- Outlets, Phone
- Pillows, Accent
- Storage, In-Floor
- Wood Interior Finish - Cherry, Walnut or Rift Oak

Galley

- Coffeemaker, 120V
- Countertop, Solid Surface w/Stainless-Steel Sink, Single-Lever Faucet w/Pullout Spray Head & Solid-Surface Sink Cover
- Flooring, Wood
- Freezer, Under Counter - 120V
- Microwave/Convection Oven w/Stainless-Steel Face - 120V
- Power Vent, 24V
- Refrigerator, Under Counter - 120V
- Storage, Cabinets - Upper & Lower
- Storage, Drawers w/Cutlery Insert
- Stove - Two Burner w/Pop-Up Cookware Retainers
- Trash Receptacle

Salon

- Entertainment Center:- Bose Lifestyle 48, 5.1-Channel Home Theater System Includes: Bose Media Center (Interfaced w/Sirius Satellite Receiver), Jewel Cube Speakers (4), Horizontal Center Channel Speaker & Acoustimass Module- Storage Cabinet - CD & DVD- TV, 32" Flatscreen LCD HDTV- RTIT3 Universal Remote Control
- Flooring - Wood
- Mirror, Wall Accent
- Seating, Sofa (Ultraleather) w/Pullout Bed - Starboard
- Steps, Entryway - Teak w/Stainless-Steel Handrail
- Storage, Gunwale Cabinets
- Table, Convertable Dining/Coffee (Movable) w/High-Gloss Wood Surface & Storage Below

Master Stateroom

- Bed, Queen-Size w/Innerspring Mattress, Pillows, Sheets, Coordinated Spread, Drawers

& Storage Below

- Entertainment Center:- Bose Lifestyle 321, 2.1-Channel Home Entertainment System Includes: Bose Media Center, Gemstone Speaker Arrays (2) & Acoustimass Module- TV, 32" Flatscreen LCD
- Mirror, Large - Trimmed - Aft Bulkhead
- Storage, Side Shelves

Master Head/Shower

- Bath Accessories - Towel Rings (2), Bathroom Tissue Holder, Soap Dish & Robe Hooks (3)
- Blinds
- Door, Privacy (Access to Stateroom)
- Flooring, Tile - Shower & Head
- Handrails, Stainless Steel
- Hanging Locker, Cedar Lined w/Drawer Storage Below
- Head, (VacuFlush®) - Electric
- Mirror, Full Length
- Power Vent, 24V
- Shower w/Teak Seat, Adjustable Shower Wand & Acrylic Door
- Storage, Shelves - Dedicated Toiletry
- Towels - Sea Ray
- Vanity w/Solid-Surface Countertop, Tile Backsplash, Undermount Sink w/Faucet & Storage Below w/Trash Receptacle

Forward Stateroom

- Bed, Queen-Size Island Style w/Innerspring Mattress, Pillows, Sheets & Coordinated Spread w/Storage Below
- Entertainment Center:- Bose Direct Reflecting Cube Speakers (2), Acoustimass Module & SA-3 Amplifier- TV, 19" Flatscreen LCD- DVD Player
- Flooring, Wood
- Hanging Locker, Cedar Lined w/Shoji Doors
- Shades, Roman
- Storage, Gunwale Shelves

Forward Head/Shower

- Bath Accessories - Towel Bar, Bathroom Tissue Holder, Soap Dish & Robe Hook
- Flooring, Tile
- Handrails, Stainless Steel
- Head, (VacuFlush) - Electric
- Power Vent, 24V
- Shower w/Teak Seat, Adjustable Shower Wand & Acrylic Door

- Storage, Medicine Cabinet - Mirrored
- Towels - Sea Ray
- Vanity w/Solid-Surface Countertop, Tile Backsplash, Undermount Sink w/Faucet & Storage Below w/Trash Receptacle

Hull and Deck

- Bottom Paint - (white hulls only)
- Bow Rail, 316 Stainless Steel w/Welded Stanchions, Intermediate Rails & Life Lines
- Cleats, Custom Sea Ray Thru-Bolted Bollard Style - Stainless Steel (8)
- Deck Fill Plates, Stainless Steel
- Deck Rails, 316 Stainless Steel
- Gel Coat - Arctic White
- Graphics, Striping
- Handrails, 316 Stainless Steel
- Hatch, Deck Vent - Translucent w/Locks & Sky Screen Cover (Trapezoid)
- Hull Windows, Color-Matched Aluminum (8 Fixed)
- Lights, Navigation
- Portlights, Stainless Steel (2 Opening, 4 Fixed)
- Resin, High-Performance Vinylester
- Rub Rail, PVC w/Stainless-Steel Insert
- Skylight, Flush Mount w/Retractable Sunshade - Salon
- Stringer System, Fiberglass
- Sun Pad, Forward Deck w/Adjustable Backrests, Cover & Built-In Drink Holders
- Swim Platform, Extended w/Concealed Stainless-Steel Four-Step Swim Ladder
- Thru-Hull Fittings, Stainless Steel
- Vent System, Engine Room w/Stainless-Steel Grills
- Windshield Washer System
- Windshield Wipers, 24V
- Windshield, Tempered/Tinted Curved Glass w/Electric Front Vent & Side Windows

Основная информация

Тип судна: Aft Cockpit

Модельный год: 2012

Год постройки: 2012

Страна: United States

Размеры

Длина общая: 54' 0" (16.46m)

Ширина: 15' 3" (4.65m)

Макс. осадка: 4' 2" (1.27m)

Скорость, вместимость и масса

Водоизмещение: 100000000 Pounds

Вместимость воды: 150 Gallons

Вместимость сточного бака: 68 Gallons

Объем топливного бака: 600 Gallons

Размещение

Всего кают: 2

Всего ком. состава: 2

Корпус и палуба

Материал корпуса: Fiberglass

Комплектация корпуса: Semi-Displacement

Информация о двигателе

Двигатели: 2

Производитель: Cummins

Модель: QSC-600 DTS

Тип двигателя: Inboard

Тип топлива: Diesel

ФОТОГРАФИИ

IMG_0121



IMG_2250



IMG_1852



IMG_1853



IMG_1854



IMG_1859



IMG_1861



IMG_1858



IMG_1844



IMG_1786



IMG_1847



IMG_2242



54 9



54 18



54 2



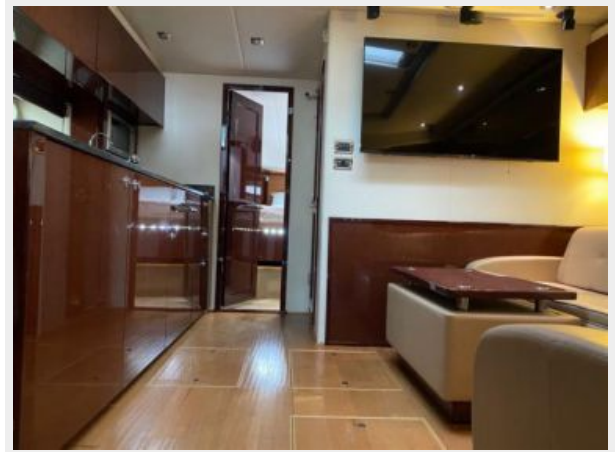
54 17



54 3



54 4



54 7



54 5



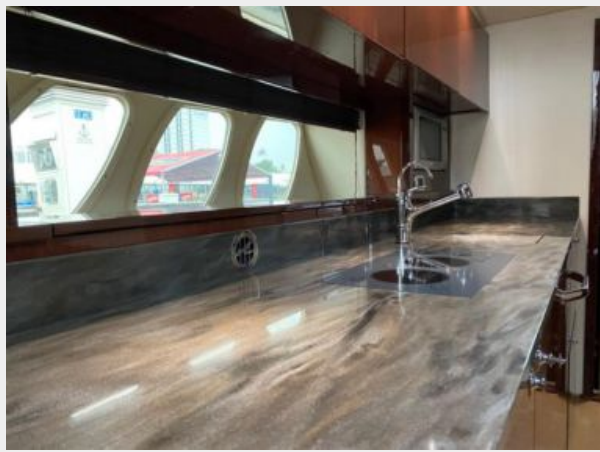
54 6



54 24



54 25



54 14



54 10



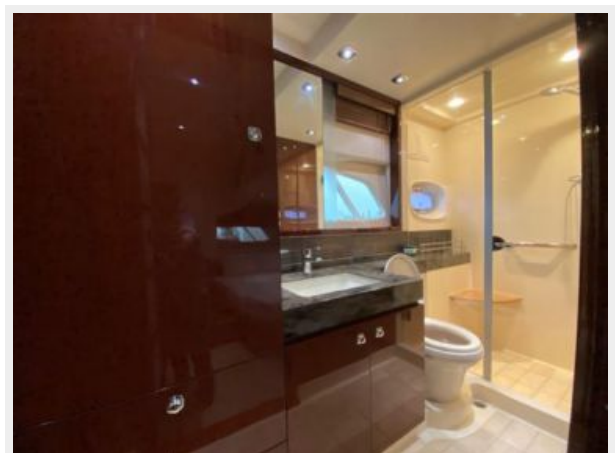
54 19



IMG_1878



54 11



54 12



54 13



54 20



54 22



54 23



IMG_1862



engine1



engine2



engine3



engine4



enigne5



IMG_1780



IMG_1782



IMG_1783



IMG_1785



prop1



prop2



prop3



IMG_0127



IMG_0128



КОНТАКТЫ

Андрей Шестаков (Andrey Shestakov) – ведущий яхтенный брокер отдела продаж яхт и судов компании Shestakov Yacht Sales Inc. Официальный представитель Shestakov Yacht Sales Inc. для русскоговорящих клиентов в центральном офисе компании в Майами/Форт Лодердейл/Флорида/США.

Контактная информация

Email: andrey@shestakovyachtsales.com

Web: shestakovyachtsales.com

Телефоны

Краснодарский край: **+7(918)465-66-44**

США, Майами, Флорида: **+1(954)274-4435**

Время работы

Понедельник – Суббота: **9:00 - 21:00**
EDT

Воскресенье: **Закрыто**

Адрес



Harbour Towne Marina, 850 NE 3rd St,
STE 213, Dania, FL 33004