

CHARISMATIC — HATTERAS



Builder: HATTERAS

Year Built: 1976

Model: Trawler Yacht

Price: PRICE ON APPLICATION

Location: United States

LOA: 48' (14.63mm)

Beam: 16.5

Min Draft: 4' 6" (1.37mm)

Max Draft: 4' 6" (1.37mm)

Cruise Speed: 8 Knots Kts. (9 MPH)

Max Speed: 9 Knots Kts. (10 MPH)

Our experienced yacht broker, Andrey Shestakov, will help you choose and buy a yacht that best suits your needs **Charismatic — HATTERAS** from our catalogue. Presently, at Shestakov Yacht Sales Inc., we have a wide variety of yachts available on our sale's list. We also work in close contact with all the big yacht manufacturers from all over the world.

If you would like to buy a yacht **Charismatic — HATTERAS** or would like help answering any questions concerning purchasing, selling or chartering a yacht, please call **+1(954)274-4435**

TABLE OF CONTENTS

TABLE OF CONTENTS	2
SPECIFICATIONS	3
Overview	3
Basic Information	3
Dimensions	3
Speed, Capacities and Weight	3
Accommodations	4
Hull and Deck Information	4
Engine Information	4
PHOTOS	5
CONTACTS	19
Contact details	19
Telephones	19
Office hours	19
Address	19

SPECIFICATIONS

Overview

Charismatic is a 1976 48' Hatteras Long Range Cruiser in very nice condition. She is docked under cover in fresh water. She offers twin 112 hp main engines, newer 17 kW Onan generator, Auto-gen 4 kW 110 vac alternator, Naiad stabilizers, fuel polishing system, oil change system, Hurricane diesel fired heating system, Sidepower bowthruster, 800 gpd watermaker, Electra-Scan blackwater treatment system, some updated electronics, KVH satellite TV system, Nick Jackson 1,000 lb davit and Eisenglass and screen enclosed aftdeck. She was also painted in 2017. Charismatic is Great Loop capable or ready for bluewater passages.

Basic Information

Category: Trawler Yacht

Model Year: 1976

Year Built: 1976

Country: United States

Dimensions

LOA: 48' (14.63mm)

LWL: 43' 4" (13.21mm)

Beam: 16.5

Min Draft: 4' 6" (1.37mm)

Max Draft: 4' 6" (1.37mm)

Speed, Capacities and Weight

Cruise Speed: 8 Knots Kts. (9 MPH)

Max Speed: 9 Knots Kts. (10 MPH)

Water Capacity: 400 Gallons

Holding Tank: 70 Gal Gallons

Fuel Capacity: 1300 Gal Gallons

Accommodations

Total Cabins: 2

Total Berths: 3

Total Heads: 2

Hull and Deck Information

Hull Material: Fiberglass

Engine Information

Engines: 2

Manufacturer: Detroit Diesel

Engine Type: Inboard

Fuel Type: Diesel

PHOTOS







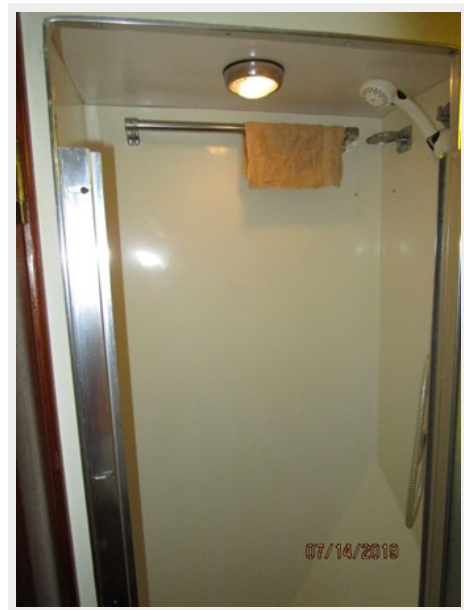




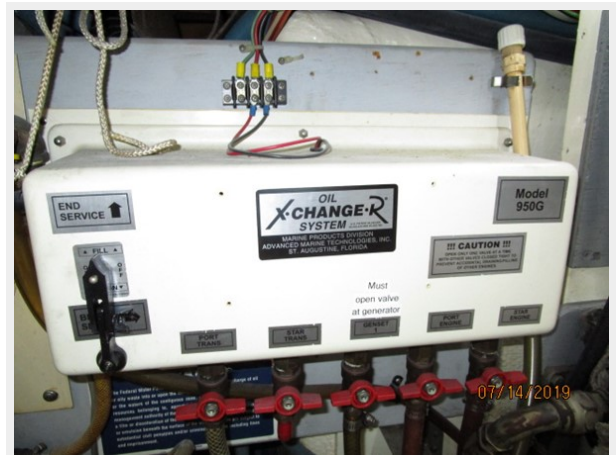
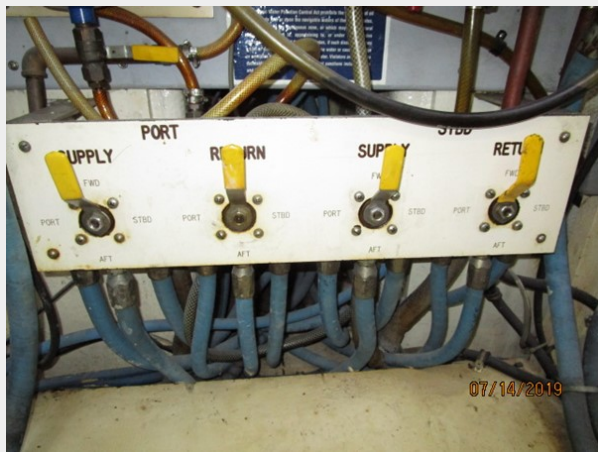


















CONTACTS

Andrey Shestakov, leading yacht broker of the sales department of Shestakov Yacht Sales Inc. Shestakov Yacht Sales Inc., the official representative of the Miami/Fort Lauderdale FL headquarters.

Contact details

Email: andrey@shestakovyachtsales.com

Web: shestakovyachtsales.com/en/

Telephones

USA: +1(954)274-4435

Office hours

Monday – Saturday: **9:00 - 21:00** EDT

Sunday: **closed**

Address



Harbour Towne Marina, 850 NE 3rd St,
STE 213, Dania, FL 33004