

## IMAGINE — HATTERAS



**Builder:** HATTERAS

**Year Built:** 2020

**Model:** Motor Yacht

**Price:** PRICE ON APPLICATION

**Location:** United States

**LOA:** 60' 0" (18.29m)

**Beam:** 18' 2" (5.54m)

**Max Draft:** 4' 8" (1.42m)

**Cruise Speed:** 25 Kts. (29 MPH)

**Max Speed:** 31 Kts. (36 MPH)

Our experienced yacht broker, Andrey Shestakov, will help you choose and buy a yacht that best suits your needs **Imagine — HATTERAS** from our catalogue. Presently, at Shestakov Yacht Sales Inc., we have a wide variety of yachts available on our sale's list. We also work in close contact with all the big yacht manufacturers from all over the world.

If you would like to buy a yacht **Imagine — HATTERAS** or would like help answering any questions concerning purchasing, selling or chartering a yacht, please call **+1(954)274-4435**

# TABLE OF CONTENTS

TABLE OF CONTENTS	2
SPECIFICATIONS	5
Overview	5
Basic Information	5
Dimensions	5
Speed, Capacities and Weight	5
Accommodations	6
Hull and Deck Information	6
Engine Information	6
DETAILED INFORMATION	7
Brokers's Comments	7
Hatteras Factory Upgrade Selections	7
Hatteras Custom Factory Additions	8
Navigation Equipment	9
Entertainment Equipment	10
Hatteras M60 Standard Features	11
Disclaimer	13
Exclusions	13
Disclaimer	13
PHOTOS	15
_Imagine_60'Hatteras38	15
_Imagine_60'Hatteras39	15
_Imagine_60'Hatteras41	15
_Imagine_60'Hatteras40	15
_Imagine_60'Hatteras35	16
_Imagine_60'Hatteras42	16
_Imagine_60'Hatteras32	16
_Imagine_60'Hatteras30	16

_Imagine_60'Hatteras33	17
_Imagine_60'Hatteras31	17
_Imagine_60'Hatteras05	17
_Imagine_60'Hatteras03	17
_Imagine_60'Hatteras01	18
_Imagine_60'Hatteras02	18
_Imagine_60'Hatteras04	18
_Imagine_60'Hatteras07	18
_Imagine_60'Hatteras08	18
_Imagine_60'Hatteras06	18
_Imagine_60'Hatteras10	19
_Imagine_60'Hatteras09	19
_Imagine_60'Hatteras11	19
_Imagine_60'Hatteras12	19
_Imagine_60'Hatteras17	19
_Imagine_60'Hatteras15	19
_Imagine_60'Hatteras18	20
_Imagine_60'Hatteras19	20
_Imagine_60'Hatteras21	20
_Imagine_60'Hatteras22	20
_Imagine_60'Hatteras20	20
_Imagine_60'Hatteras23	20
_Imagine_60'Hatteras13	21
_Imagine_60'Hatteras14	21
_Imagine_60'Hatteras24	21
_Imagine_60'Hatteras16	21
_Imagine_60'Hatteras25	21
_Imagine_60'Hatteras26	21
_Imagine_60'Hatteras27	22

_Imagine_60'Hatteras28	22
_Imagine_60'Hatteras29	22
_Imagine_60'Hatteras34	22
CONTACTS	23
Contact details	23
Telephones	23
Office hours	23
Address	23

# SPECIFICATIONS

---

## Overview

---

**Specially Selected and Customized by Discerning Owner for Long Range and Reliable Bluewater Cruising**

**Stunning New for 2020 Interior Decor- Must See**

**Newest M60 Hatteras Motoryacht on the Pre-Owned Market**

**Immaculate Condition**

**Loaded with Upgrades and Customizations**

**Low Hours, Ready for Cruising**

## Basic Information

---

**Category:** Motor Yacht

**Model Year:** 2020

**Year Built:** 2020

**Country:** United States

## Dimensions

---

**LOA:** 60' 0" (18.29m)

**Beam:** 18' 2" (5.54m)

**Max Draft:** 4' 8" (1.42m)

## Speed, Capacities and Weight

---

**Cruise Speed:** 25 Kts. (29 MPH)

**Max Speed:** 31 Kts. (36 MPH)

**Displacement:** 87700 Pounds

**Water Capacity:** 250 Gallons

**Holding Tank:** 100 Gallons

**Fuel Capacity:** 1200 Gallons

---

## Accommodations

---

**Total Cabins:** 3

**Sleeps:** 6

**Total Heads:** 2

---

## Hull and Deck Information

---

**Hull Material:** Fiberglass

**Deck Material:** Teak

**Hull Configuration:** Semi-Displacement

**Hull Designer:** Hatteras Yachts

**Exterior Designer:** Hatteras Yachts

**Interior Designer:** Hatteras Yachts

---

## Engine Information

---

**Engines:** 2

**Manufacturer:** Caterpillar

**Model:** C-18A

**Engine Type:** Inboard

**Fuel Type:** Diesel

---

# DETAILED INFORMATION

---

## Brokers's Comments

---

### From Central Agent Jimmy Rogers, Certified Professional Yacht Broker:

The stunning 2020 Hatteras M60 "IMAGINE" was build as hull #32 in the iconic M60 series. This all-American vessel was constructed at the Hatteras Yachts factory in New Bern, North Carolina over a 1 year period.

IMAGINE was not your typical factory spec built M60, she was highly customized and optioned out by lifelong experienced boaters, one of which happens to be an engineer by degree, with the new 2020 decor selected by his better half in conjunction with the in-house Hatteras designer.

The result is a superbly equipped bluewater cruising vessel that is visually stunning inside out- optimized for a cruising couple to live aboard for long periods of time in comfort.

For those that understand and appreciate items of uniquely superior quality, Hatteras Yachts is the yacht manufacturer for you- and IMAGINE is truly the best of the best throughout.

For more information about Hatteras Yachts, check out this article I wrote about their construction:

If you are in the market- IMAGINE is a must see- presented as close to a new yacht as possible (still has that new boat smell!) without the wait for a build and for a dramatically reduced price. New construction pricing for a comparably equipped M60 is about four million dollars

\*\*I oversaw the construction of this yacht and am very familiar with her, having all the original build specifications- please feel free to inquire for more details

---

## Hatteras Factory Upgrade Selections

---

- CAT C-18A 1150hp Diesel Engines
- Hand Crafted European Walnut with Satin Finish Interior Woodwork
- Premium Mattress Upgrade in Master Stateroom
- Premium Mattress Upgrade in VIP Stateroom
- Exterior Cushion and Seating Covers
- Teak Aft Deck
- Teak Steps to Flybridge
- Teak Flybridge Deck
- Teak Steps to Swim Platform
- Full Enclosure on Flybridge
- Articulated Boarding Ladder with Dedicated Storage
- Hydraulic Davit on Aft Flybridge, 1000lb Marquipt
- (4) White Underwater Lights

- Wine Cooler in Galley
- Appliances in Galley to Have Wood Faces
- Electric Stern Thruster (Bow Thruster Standard)
- Storage Racks in Engine Room
- 32,000 BTU Flybridge Air Conditioning
- Backup AC Fresh Water Pump
- 2nd Generator, also 21.5kw Onan
- Direct TV HD- Full Package

## Hatteras Custom Factory Additions

---

\*Items that were custom specified by her very experienced owner that were done by Hatteras at the Factory

### MECHANICAL ITEMS

- Install Split Air Conditioning Unit in Master Stateroom (compressor located in engine room to reduce noise)
- Additional Air Conditioning Unit in Port Guest Stateroom
- Spare Plumbed Raw Water Pump for Air Conditioning System
- Custom Storage Shelf in Companionway Bilge Area
- Plumb For Future Install of Water Maker
- Plumb For Future Install of Spot Zero Water Filtration System
- Stainless Steel Staple Rails on Aft Swim Platform
- CAT 5 Year Transferrable Platinum Plus Engine Warranty
- RACOR P510MAM Fuel Polishing System
- Upgrade all Vessel Hose Clamps to Smooth Worm Drive Clamps
- Add Swivel to Bow Anchor
- Add (2) Fixed Stern Cleats Port and Starboard
- Install Weather Proof Outlet on Aft Deck Port Side
- Add Safe in Master Stateroom
- Upgraded Larger Trim Tabs
- Custom Aft Flybridge Arrangement to Accomodate Tender
- Upgraded Ultra Pump Junior Bilge Float Switches in Lieu of Standard Rule
- Install Freshwater Washdown Outlet on Flybridge
- Install Freshwater Washdown Outlet in Anchor Locker
- Add Second Fuel Fill so Can Fuel Vessel Either Side to Single Tank
- Dual RACOR Fuel Filters on Main Engines



## DECOR ITEMS

- New for 2020 Salon Layout with Pop Up TV to Starboard
- Custom Salon Bar with (2) Barstools
- Custom Salon Coffee Table
- Shore Power Cord To Be White
- Interior Stairwell to Staterooms to be Upgraded White Avonite Like M75's
- Galley Upper Cabinets Upgraded to Nuvacor White
- Dinette Table in Galley to be Clear Glass w/Stainless Steel Pedestal
- Upgraded Flooring in Galley and Heads
- Remove Fiberglass Box Under Helm Chairs and Add Heavy Duty Stainless Steel Pedestals
- Custom Glass Etching on Panel at Top of Stairway
- Upgraded Cabinetry Knobs Throughout Vessel (Ones Used on M75)
- Galley Buffet to Have Leather Insert on Top
- Exterior Teak Decking to Have Grey Caulk In Lieu of Black
- Paint 2 Exterior Forward Window Mullions Black
- Custom Aft Deck Table w/Mother of Pearl Inlay
- Custom Flybridge Tables w/Mother of Pearl Inlay
- Custom Upgraded Headliners Throughout (Ones Used on M75)

## A/V and NAV Equipment

- Dual Band Wireless Yacht Controller
- Add Bow Speaker System
- (2) Garmin Engine Room Cameras
- Pre-Wire for Flybridge TV on Starboard Side Wing
- Sirius XM Satellite Receiver
- Salon Denon Audio System to Connect with Fusion Apollo Sound System
- Add Garmin AIS800 Unit

## Navigation Equipment

- (2) Garmin GPSMAP 8617 17" Chartplotters
- Garmin Chart Card Reader
- Garmin GSD-24 Depth Sounder
- Garmin B260 Transducer
- Garmin Reactor 40 Autopilot with Rudder Feed Back
- Garmin GMR 1226XHD2-6 12kw Open Array Radar w/6' Antenna
- (2) ICOM IC-M506 Radios

- Furuno RD-33 Depth Sounder w/Airmar Smart Sensor Transducer
- (3) Garmin GC 10 Marine Cameras- (2) In Engine Room, (1) on Aft Deck

## Entertainment Equipment

---

- KVH HD7 Satellite TV Dome
- Direct TV Receivers w/Remotes for Each TV

### Salon

- 40" LED TV on Custom Pop Up Arm
- Blu-Ray Player
- Denon 5.1 Home Theater System
- Front, Center and Rear Speakers
- Subwoofer
- Universal Remote Control
- Wired to Interface with Fusion Stereo System

### Master Stateroom

- 32" LED TV
- Blu-Ray Player
- Denon 5.1 Home Theater System
- Front, Center and Rear Speakers
- Subwoofer
- Universal Remote Control

### Bow Stateroom

- 24" LED TV
- AM/FM Stereo w/Blu Ray Player and Bluetooth
- (2) Stereo Speakers

### Port Guest Stateroom

- 24" LED TV
- AM/FM Stereo w/Blu Ray Player and Bluetooth
- (1) Stereo Speaker

### Flybridge

- AM/FM Stereo w/Bluetooth
- USB Dock
- (4) Stereo Speakers Connected to Zone 1
- (2) Stereo Speakers on Aft Flybridge Deck Connected to Zone 2
- Pre-Wire for Starboard Mounted LED TV

## Aft Deck

- Wired Remote to Flybridge Stereo Zone 3
- Stereo Amplifier
- (2) Stereo Speakers

## Bow Deck

- Wired Remote to Flybridge Stereo Zone 4
- (2) Stereo Speakers

---

## Hatteras M60 Standard Features

---

- 3 Stateroom 2 Head Arrangement
- European Walnut Cabinetry with Satin Finish
- Padded Panels and Whisperwall Throughout
- Galley Center Island with Sink, Stone Countertops, Storage and Dining Table with Integrated Seating
- King Size Master Stateroom Berth with Storage Underneath, Dresser, Night Stands and Vanity with Stool
- Queen Size VIP Stateroom Berth with Storage Underneath and Night Stands in Bow Stateroom
- Over Under Guest Stateroom Berths with Storage Underneath
- Cedar Lined Closets in All Staterooms
- Salon Sofa with Storage in Salon
- Dimmable LED Lighting Throughout Living Areas
- Lighted Stairways
- Premium Ultra Plush Mattresses Throughout
- Fixed Frameless Main Deck Windows with Tinted Safety Glass and Privacy Blinds
- Port Lights with Privacy Blinds or Black Out Panels in Staterooms
- Flybridge Dinette Lounge with Cushions and Storage Underneath, Teak Table with Cover and Stainless Steel Pedestals, (2) Adjustable Helm Chairs on Flybridge
- Aft Deck Lounge with Cushions Upholstered in Exterior Grade Fabric, Teak Table with Cover and Stainless Steel Pedestals
- Integrated Sun Lounge on Bow Deck
- Stainless Steel Heavy Duty Salon Entry Door
- Pantograph "Pilothouse" Door Starboard Side in Galley
- Transom Hinged Bustle Door to Access Lazarette
- Fiberglass Hardtop on Flybridge
- Electrically Actuated Access Hatch to Engine Room in Floor of Aft Deck
- Polished Stainless Steel Railings on Bow, Side Decks and Flybridge
- Polished Stainless Steel Grab Rails and Stanchions
- Stainless Steel Deck Fills for Fuel, Water and Waste Pump Out
- Horn

- Stainless Steel Gates from Aft Deck Swim Platform
- Stainless Steel Swim Ladder off Aft Swim Platform
- 60lb Polished Stainless Steel Plow Anchor with 300ft of Rope and 25ft of Chain
- Maxwell 24v DC 3,500lb Windlass with Controls at Anchor and Helm Station
- Polished Stainless Steel Anchor Chute
- Eight Fixed Polished Stainless Steel Cleats w/Chafing Strips
- Two Polished Stainless Steel Pop-Up Cleats on Swim Platform
- Solid Stainless Steel Rub Rail
- Exterior Tricolor LED Overhead Lights
- Exterior Low Level Courtesy LED White Lights
- (2) Standard Underwater White LED Lights \*2 additional added for total of 4
- Galley Under Counter Refrigerator/Freezer Drawer Units (2- total of 4 drawers), 4 Burner Ceramic Cooktop, Oven, Microwave, Dishwasher, Sink and Garbage Disposal
- Stacked Washer and Dryer in Companionway Closet
- Aft Flybridge Fiberglass Cabinet with Outdoor Grill and Refrigerator/Icemaker Combo
- Resin Infused SOLID FIBERGLASS Hull Bottom with Resin Infused Divinycell Core Hullsides (NO WOOD IN STRUCTURAL COMPONENTS ANYWHERE!)
- Hull and Superstructure Painted with Cloud White Alexseal Polyurethane Paint
- Anti-Fouling Bottom Paint Applied to Bottom, Black Color
- Molded Fiberglass Longitudinal Stringers with Steel Engine Beds
- Finished and Painted Engine Room and Bilges
- Fuel Water Separator/Filters with Electric Priming Pumps
- Hatteras Integrated Engine Room Air Intake Demister System
- Stainless Steel Rudders with Manganese Bronze Dripless Rudder Seals
- Alloy 22 High Strength Propeller Shafts Tapered with Round Keys
- Manganese Bronze Struts and Engine Couplings
- Nibral High Performance 5 Blade Propellers
- Bow Thruster, 26HP Electric with Dedicated 24 Volt Bank and Charger (Stern Thruster Also Added as an Option)
- FM200 Fire Extinguisher System with Automatic and Manual Controls
- 24V DC Bilge and Sump Pump Systems
- High Volume Emergency Bilge Pump
- All Underwater Through Hull Valves are Bronze/Chrome Through Bolted with Electrical Bonding Throughout
- Hydraulic Power Assisted Steering
- DC Ventilation Blower
- Interior Air Conditioning, 64,000 Total BTU Capacity with Reverse Cycle Heating and Digital HVAC Control
- Recirculating Fans in All Heads
- Freshwater Washdown Outlet on Swim Platform
- Freshwater Swim Shower on Swim Platform
- AC Freshwater Pump
- Centralized Freshwater Manifolds with Shutoffs
- 20 Gallon 240v Freshwater Heater

- 250 Gallon Freshwater Tank
- 100 Gallon Holding Tank with Deck Plate and 24v Overboard Discharge Pump
- Holding Tank 3/4 Full Indicator Lights
- Fresh Water Toilets
- Dockside Water Connection with Pressure Regulator
- (2) 240v, 50A, Retractable Shore Cords (white color)
- (2) 50A Polarization Transformers with Boost Function
- (2) AGM 24v Heavy Duty Marine Battery Banks Mounted in Fire Retardant Fiberglass Boxes
- Automatic Battery Charger
- Automatic Battery Paralleling System with Switch on Helm Console
- Battery Control Panel with Fuses and Isolation Switches Located in Engine Room
- AC and DC Distribution Panels with Magnetic Circuit Breakers
- DC Electronics Panel with Magnetic Circuit Breakers
- Smoke Detectors Located in All Staterooms, Salon and Galley
- CO Detectors Located in All Staterooms, Salon and Galley
- USB Charging Ports in All Staterooms, Salon and Galley
- 21.5kw Generator (one standard, second 21.5kw gen added as an upgrade)
- AC Duplex Outlet with Ground Fault Protection Throughout
- Systems Monitor Display on AC Switching Panel, with Visual and Audible Signals for Exhaust Temperature, Alternator, Battery Voltage, High Bilge Water, Fire Warning in Engine Compartment, Fire Extinguisher Discharge in Engine Room, AC Power Loss, Smoke Detectors, Carbon Monoxide Detectors, Fresh Water Level and Holding Tank 3/4 Full Monitor
- Omni Directional TV Antenna
- Stern Flag Staff with Ensign
- Portable "Drychem" Fire Extinguishers in Compliance with USCG and ABYC Standards

---

## Disclaimer

The Company offers the details of this vessel in good faith but cannot guarantee or warrant the accuracy of this information nor warrant the condition of the vessel. A buyer should instruct his agents, or his surveyors, to investigate such details as the buyer desires validated. This vessel is offered subject to prior sale, price change, or withdrawal without notice.

---

## Exclusions

Owner's personal belongings.

---

## Disclaimer

The Company offers the details of this vessel or yacht in good faith but cannot guarantee or

warrant the accuracy of this information nor warrant the condition of the vessel. A buyer should instruct his representatives, agents, or his surveyors, to investigate such details as the buyer desires validated. This vessel or yacht is offered subject to prior sale, price change, or withdrawal without notice.

# PHOTOS

**\_Imagine\_60'Hatteras38**



**\_Imagine\_60'Hatteras39**



**\_Imagine\_60'Hatteras41**



**\_Imagine\_60'Hatteras40**



**\_Imagine\_60'Hatteras42**



**\_Imagine\_60'Hatteras35**



**\_Imagine\_60'Hatteras32**



**\_Imagine\_60'Hatteras30**





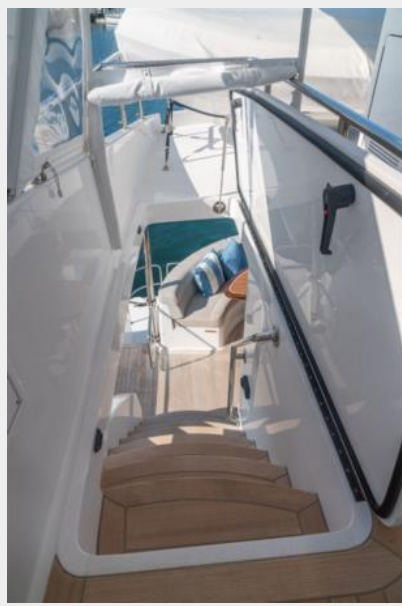
\_Imagine\_60'Hatteras31



\_Imagine\_60'Hatteras33



\_Imagine\_60'Hatteras05



\_Imagine\_60'Hatteras03



\_Imagine\_60'Hatteras01



\_Imagine\_60'Hatteras02



\_Imagine\_60'Hatteras04



\_Imagine\_60'Hatteras07



\_Imagine\_60'Hatteras08



\_Imagine\_60'Hatteras06



\_Imagine\_60'Hatteras09



\_Imagine\_60'Hatteras10



\_Imagine\_60'Hatteras11



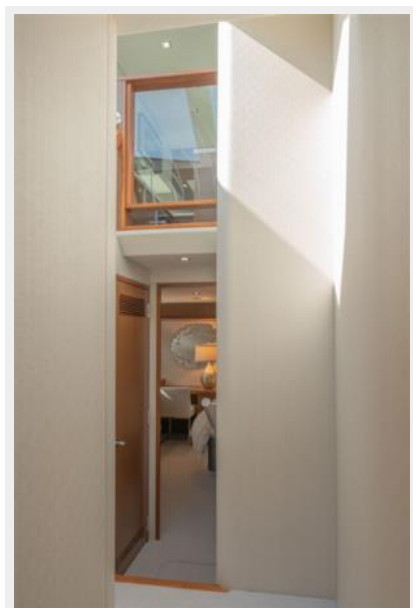
\_Imagine\_60'Hatteras12



\_Imagine\_60'Hatteras17



\_Imagine\_60'Hatteras15

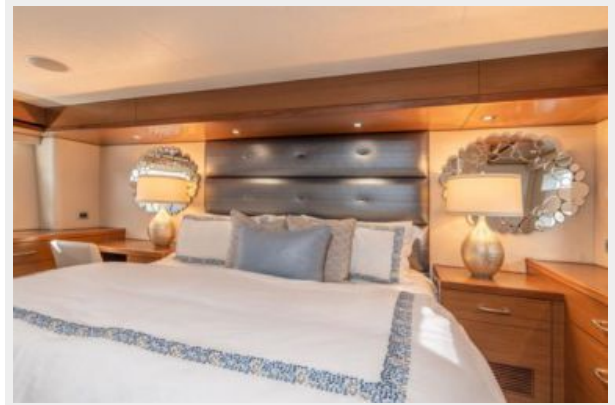




\_Imagine\_60'Hatteras18



\_Imagine\_60'Hatteras19



\_Imagine\_60'Hatteras21



\_Imagine\_60'Hatteras22



\_Imagine\_60'Hatteras20



\_Imagine\_60'Hatteras23



\_Imagine\_60'Hatteras13



\_Imagine\_60'Hatteras14



\_Imagine\_60'Hatteras16



\_Imagine\_60'Hatteras24



\_Imagine\_60'Hatteras25



\_Imagine\_60'Hatteras26



\_Imagine\_60'Hatteras27



\_Imagine\_60'Hatteras28



\_Imagine\_60'Hatteras29



\_Imagine\_60'Hatteras34





# CONTACTS

---

Andrey Shestakov, leading yacht broker of the sales department of Shestakov Yacht Sales Inc. Shestakov Yacht Sales Inc., the official representative of the Miami/Fort Lauderdale FL headquarters.

## Contact details

---

Email: **andrey@shestakovyachtsales.com**

Web: [shestakovyachtsales.com/en/](http://shestakovyachtsales.com/en/)

## Telephones

---

USA: **+1(954)274-4435**

## Office hours

---

Monday – Saturday: **9:00 - 21:00 EDT**

Sunday: **closed**

## Address

---



Harbour Towne Marina, 850 NE 3rd St,  
STE 213, Dania, FL 33004