

MARUSSIA — AZIMUT



Builder: [AZIMUT](#)

Year Built: 2009

Model: Motor Yacht

Price: PRICE ON APPLICATION

Location: United States

LOA: 47' 0" (14.33m)

Beam: 14' 10" (4.52m)

Min Draft: 4' 1" (1.24m)

Max Draft: 4' 5" (1.35m)

Cruise Speed: 25 Kts. (29 MPH)

Max Speed: 31 Kts. (36 MPH)

Our experienced yacht broker, Andrey Shestakov, will help you choose and buy a yacht that best suits your needs **Marussia — AZIMUT** from our catalogue. Presently, at Shestakov Yacht Sales Inc., we have a wide variety of yachts available on our sale's list. We also work in close contact with all the big yacht manufacturers from all over the world.

If you would like to buy a yacht **Marussia — AZIMUT** or would like help answering any questions concerning purchasing, selling or chartering a yacht, please call **+1(954)274-4435**

TABLE OF CONTENTS

TABLE OF CONTENTS	2
SPECIFICATIONS	6
Overview	6
Basic Information	6
Dimensions	6
Speed, Capacities and Weight	6
Accommodations	6
Hull and Deck Information	7
Engine Information	7
DETAILED INFORMATION	8
Descriptions and Features	8
Exclusions	13
Disclaimer	13
PHOTOS	14
2	14
3	14
5	14
4	14
6	14
7	14
9	15
8	15
10	15
11	15
12	15
13	15
14	16
15	16

16	16
17	16
18	16
19	16
20	17
21	17
22	17
23	17
24	17
25	17
27	18
26	18
29	18
30	18
31	18
32	18
33	19
34	19
36	19
35	19
38	19
37	19
40	20
39	20
41	20
42	20
43	20
44	20
45	21

46	21
47	21
48	21
49	22
50	22
51	22
52	22
53	23
54	23
55	23
56	23
57	23
58	23
59	24
60	24
61	24
62	24
63	24
64	24
65	25
66	25
67	25
68	25
69	25
70	25
72	26
71	26
73	26
74	26

75	26
CONTACTS	27
Contact details	27
Telephones	27
Office hours	27
Address	27

SPECIFICATIONS

Overview

All recent maintenance repairs in hand. 1000 hours maintenance done, with the boat having less than 700 hours. Owner maintenance. The generous volume of the hull and innovative layout inside, guarantees guests aboard the Azimut 47 an unparalleled level of comfort. 3 Staterooms, spacious flybridge. Low Hours! Owner motivated to sell!

Basic Information

Category: Motor Yacht

Model Year: 2009

Year Built: 2009

Country: United States

Fly Bridge: Yes

Dimensions

LOA: 47' 0" (14.33m)

Beam: 14' 10" (4.52m)

Min Draft: 4' 1" (1.24m)

Max Draft: 4' 5" (1.35m)

Speed, Capacities and Weight

Cruise Speed: 25 Kts. (29 MPH)

Max Speed: 31 Kts. (36 MPH)

Displacement: 35400 Pounds

Water Capacity: 156 Gallons

Holding Tank: 59 Gallons

Fuel Capacity: 528 Gallons

Accommodations

Total Cabins: 3

Total Berths: 6

Total Heads: 2

Hull and Deck Information

Hull Material: Fiberglass

Hull Finish: Plastic

Engine Information

Engines: 2

Manufacturer: Caterpillar

Model: C9 6L-6 Cylinder

Engine Type: Inboard

Fuel Type: Diesel

DETAILED INFORMATION

Descriptions and Features

Deck

- Two midship cleats (one for each side)
- Handrails in stainless steel
- High impact-resistant stainless steel and PVC grab-rail
- Non-slip walkways
- Tempered glass windows
- Navigation lights
- 2 fuel fillers
- Freshwater filler
- Blackwater tank outlet on the side walkway

Flybridge

- External access to flybridge via a ladder integrated into the structure
- Inflatable life raft storage
- Non-slip floor
- Engine controls
- Engine rev counter
- Engine pressure gauge
- Marine gear pressure gauges
- Ammeter
- Engine temperature gauge
- Alarms lights
- Trim tabs indicator

Owner's cabin

- Private access to the owner's head compartment
- Double bed with tilt-up shelf for luggage
- The drawer underneath the bed
- Two large wardrobes
- Fixed picture windows on the broadsides
- Deck hatch
- Reading lights
- Furniture in decapè oak wood
- Courtesy lights in wardrobes

Owner's head

- Private access from the owner's cabin

- Shower with round box and wooden grating
- WC system with macerator pump
- Sink in glass, "COGNAC" color
- Wooden floor
- Air (natural) extraction
- Round openable porthole
- Cabinet with mirror
- Venetian blind curtains in wood.

Starboard guest cabin (VIP)

- Private access to the guest head compartment
- 2 twin beds convertible in one queen-size bed
- Storage under the beds
- Large wardrobe
- Picture windows
- Reading lights
- Courtesy lights on the ceiling
- Furniture in decapè oak wood
- 1 openable porthole

Portside guest cabin

- 2 twin beds
- Storage under the beds
- Large wardrobe
- Picture window
- Reading lights
- Courtesy lights on the ceiling
- Furniture in decapè oak wood
- 1 openable porthole

Guest head

- Access from the starboard guest cabin
- Shower with round box and wooden grating
- WC system with macerator pump
- Cabinet with mirror
- Round openable porthole
- Wooden floor
- Air extraction (natural)
- Venetian blinds in wood

- The structural design for the hull has been approved by RINA. This implies another guarantee of the structural quality, which is also assured by the most advanced techniques and by the materials used. Aft deadrise of the hull is 14° and the midship deadrise is 19°.

Fiberglass structure uses multiaxial fabrics with the powder bonding agent. Infusion stratification method. Use of neopentyl isophthalic spray gelcoat.

- Expanded PVC is used for sandwich structures on the broadsides, on the superstructure, and on the bottom. The anti-collision fore bulkheads in the engine room, have a wooden and foam structure, sandwiched together. Dicyclopentadiene resin is used for the inner layers of the hull and for the superstructures. Vinylester resins (osmosis and marking resistance, print through) are used for the first external coats of the hull.

Engines

- CATERPILLAR C9 6L -6-cylinder diesel engine. 685 hours
- Max. power output: 423 kW @ 2500 rpm (575 mHP)
- Speed reduction gear/marine gear: ZF 286 IV, reduction ratio: 2.011:1.
- Propellers: NiBrAl alloy, four blades, designed and built to optimize hull performance and to guarantee outstanding comfort during navigation.
- Shafts: MAR 17 steel, diam. 60 mm; shaft supports in bronze.

Fuel System

- 2 1000 l (264 Us gallons) aluminum tanks
- 2 fuel filler plugs in the deck walkways and 2 vents on the broadside
- Tanks connected with 1" pipe and manual shut-off valves
- Optical gauge
- Fuel tank level indicator (helm station)
- Fuel deliveries wiretap by 1" 24 V solenoid valves
- Tap for fuel bleeding on the starboard tank (filter priming)
- Alarm for water in the fuel

Electrical System

- Voltages on board: 220/110 V AC, frequency of 60 Hz
- 24 V DC from battery units
- 24 V for engine supply
- 12 V DC obtained by power supply + VHF-dedicated power supply
- Thermomagnetic high reliance-switches or fuse elements for users' protection

Generator

- KOHLER 15.5kW STD 220 V, 60 Hz stalled in the engine room with muffler and water/gas separator
- 785 hours

Shore power sockets

- 1 shore power socket 220 V, 50 A

Lighting

- Cabins and headlights with 24 V lamps
- 24 V soft light system
- 24 V lighting for the engine room through fixed lamps and a portable one

Sea Water System

- Two bronze seawater intakes for engines, with shut-off valve and metallic filter
- A 1" bronze seawater intake for generator with shut-off valve and metal filter
- A 1" bronze seawater intake for air conditioning

Grey Water System

- GRP outboard raisers
- Discharge of owner's and guest bathroom in the tank
- Main tank: 225 l (5.9 Us gals) in polyethylene, under the corridor, supplied with level and outlet control in the wheelhouse
- Greywater tank outlet can be automatic, by the level sensor, or manual
- Electrically operated 24 V transfer and discharge pumps, diaphragm - shaped and with lower acoustic impact
- Galley outlet in manifold
- Air conditioning condensation water collection
- All the outlets flow together into the holding tank with the exception of the crew cabin which discharges directly into the sea

Fresh Water System

- 1 590 l (156 Us gals) polyethylene tank
- 1 water filler plug on deck walkway and 1 vent on the broadside
- 1 water pressure pump, 24V, in engine room capacity 45 l/min
- 1 80 l (21 Us gals) water heater with electric heating 220 V (or 110 V), in the engine room
- A system that can be dissected by ACORN manifolds
- Hot and cold water line in all the head compartments, in galley and cockpit, done by single control mixers
- Coldwater line in the engine room
- Shower platform with hot and cold water

Black Water System

- WC system with macerator pump
- 1 macerator pump
- Freshwater WC wash system
- All WCs discharge directly in the holding tank
- Macerator pump for a direct outlet into the sea from the holding tank
- Tank discharge is controlled by hand

- 1 holding tank of 225 l (59 Us gals) in polyethylene
- Tank emptying also by suction on deck walkway
- Lead valve for direct sea outlet

Electronics

- Depth sounder
- Radar
- Repeater(s)
- TV Set
- Navigation Center
- Plotter
- DVD Player
- Autopilot
- Radio
- Compass
- CD Player
- GPS
- Cockpit Speakers
- VHF

Inside Equipment

- Bow Thruster
- Electric Bilge Pump
- Microwave Oven
- Marine Head
- Air Conditioning
- Heating
- Hot Water
- Refrigerator
- Sea Water Pump
- Battery Charger

Electrical Equipment

- Shore Power Inlet
- Generator
- Inverter

Outside Equipment/Extras

- Teak Cockpit
- Cockpit Shower
- Teak Side decks
- Hydraulic Gangway

-
- Cockpit Cushions
 - Cockpit Table
 - Swimming Ladder

Covers

- Bimini Top
- Cockpit Cover

Exclusions

Owner's personal belongings.

Disclaimer

The Company offers the details of this vessel or yacht in good faith but cannot guarantee or warrant the accuracy of this information nor warrant the condition of the vessel. A buyer should instruct his representatives, agents, or his surveyors, to investigate such details as the buyer desires validated. This vessel or yacht is offered subject to prior sale, price change, or withdrawal without notice.

PHOTOS

2



3



4



5



6



7



8



9



10



11



12



13



14



15



16



17



18



19



20



21



22



23



24



25



26



27



29



30



31



32



33



34



35



36



37



38



39



40



41



42



43



44



45



46



47



48



49



50



51



52



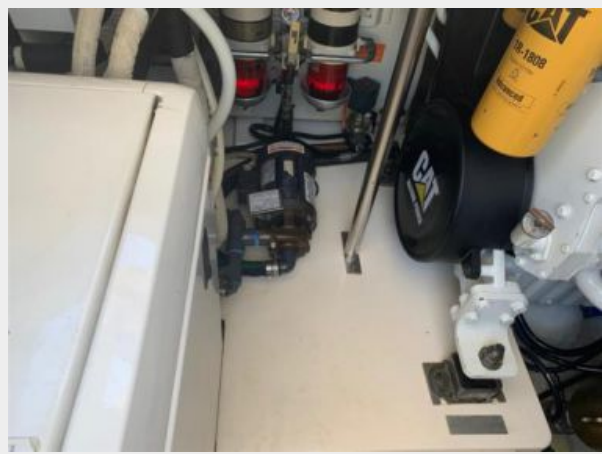
53



54



55



56



57



58



59



60



61



62



63



64



65



66



67



68



69



70



71



72



73



74



75



CONTACTS

Andrey Shestakov, leading yacht broker of the sales department of Shestakov Yacht Sales Inc. Shestakov Yacht Sales Inc., the official representative of the Miami/Fort Lauderdale FL headquarters.

Contact details

Email: andrey@shestakovyachtsales.com

Web: shestakovyachtsales.com/en/

Telephones

USA: +1(954)274-4435

Office hours

Monday – Saturday: **9:00 - 21:00** EDT

Sunday: **closed**

Address



Harbour Towne Marina, 850 NE 3rd St,
STE 213, Dania, FL 33004