

# LAGNIAPPE



**Year Built:** 2008

**Model:** Cruising Yacht

**Price:** PRICE ON APPLICATION

**LOA:** 40' (12.19mm)

**Beam:** 13

**Min Draft:** 3' 3" (0.99mm)

**Max Draft:** 3' 3" (0.99mm)

**Cruise Speed:** 28 Knots Kts. (32 MPH)

**Max Speed:** 35 Knots Kts. (40 MPH)

Our experienced yacht broker, Andrey Shestakov, will help you choose and buy a yacht that best suits your needs **Lagniappe** — n/a from our catalogue. Presently, at Shestakov Yacht Sales Inc., we have a wide variety of yachts available on our sale's list. We also work in close contact with all the big yacht manufacturers from all over the world.

If you would like to buy a yacht **Lagniappe** — n/a or would like help answering any questions concerning purchasing, selling or chartering a yacht, please call **+1(954)274-4435**

---

# TABLE OF CONTENTS

---

TABLE OF CONTENTS	2
SPECIFICATIONS	3
Overview	3
Basic Information	3
Dimensions	3
Speed, Capacities and Weight	3
Accommodations	4
Hull and Deck Information	4
Engine Information	4
PHOTOS	5
CONTACTS	20
Contact details	20
Telephones	20
Office hours	20
Address	20

---

# SPECIFICATIONS

---

## Overview

---

If you're in the market for an express cruiser this Regal 4060 is a MUST SEE!!! She shows like a new boat, has low hours, numerous upgrades and features upgraded IPS drives that make docking a breeze and bump up performance; with a super smooth ride, she goes faster on less fuel. Above deck and below Lagniappe is roomy, with tons of seating and two private cabins with ensuite heads. Add the large swim platform with a walk through transom and foredeck sun-pad, and this is a fantastic boat across the board. Whether taking the family out for a day of fun on the water, enjoying an evening cruise with friends or living aboard on an extended cruise; Lagniappe delivers! You won't find a finer express cruiser in her class anywhere! Call today to book a showing!

## Basic Information

---

**Category:** Cruising Yacht

**Sub Category:** Express

**Model Year:** 2008

**Year Built:** 2008

## Dimensions

---

**LOA:** 40' (12.19mm)

**Beam:** 13

**Min Draft:** 3' 3" (0.99mm)

**Max Draft:** 3' 3" (0.99mm)

## Speed, Capacities and Weight

---

**Cruise Speed:** 28 Knots Kts. (32 MPH)

**Max Speed:** 35 Knots Kts. (40 MPH)

**Water Capacity:** 75 Gallons

**Holding Tank:** 40 Gal Gallons

**Fuel Capacity:** 276 Gal Gallons

---

## Accommodations

---

**Total Cabins:** 3

**Total Berths:** 4

**Total Heads:** 2

---

## Hull and Deck Information

---

**Hull Material:** Fiberglass

---

## Engine Information

---

**Engines:** 2

**Manufacturer:** Volvo Penta

**Engine Type:** Inboard

**Fuel Type:** Diesel

# PHOTOS





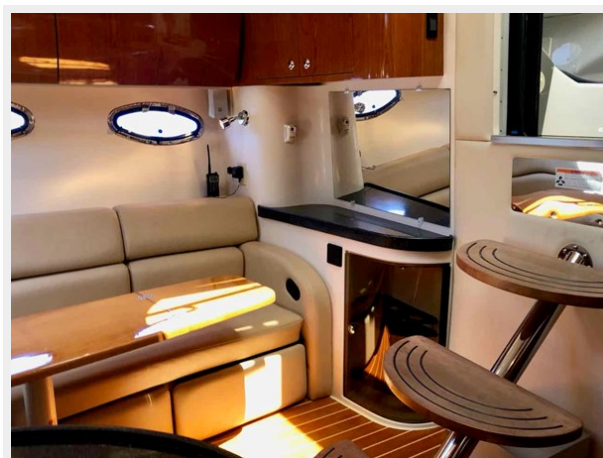






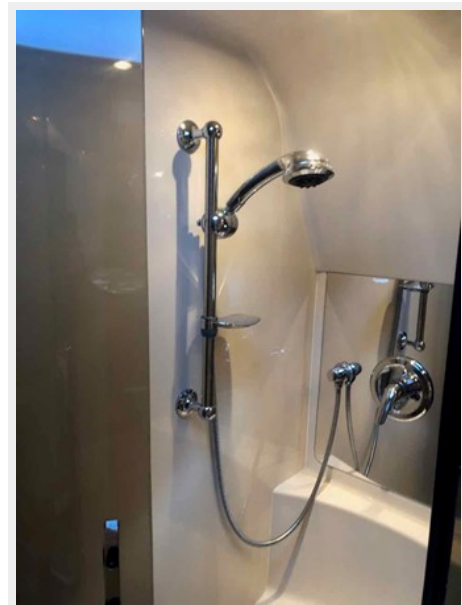










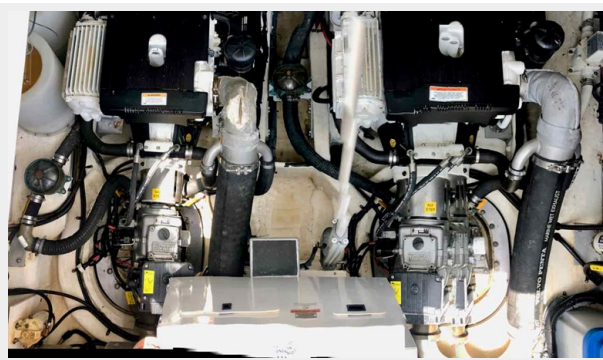


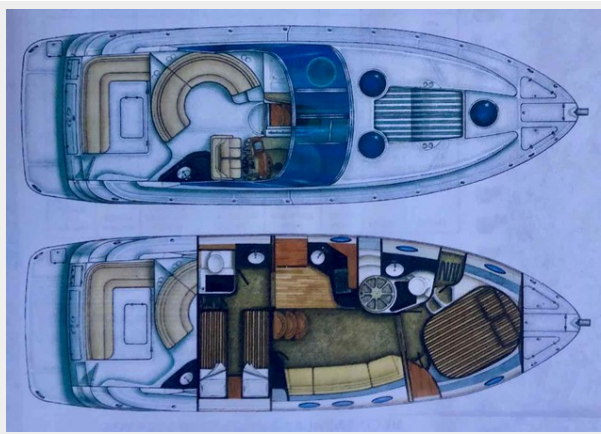
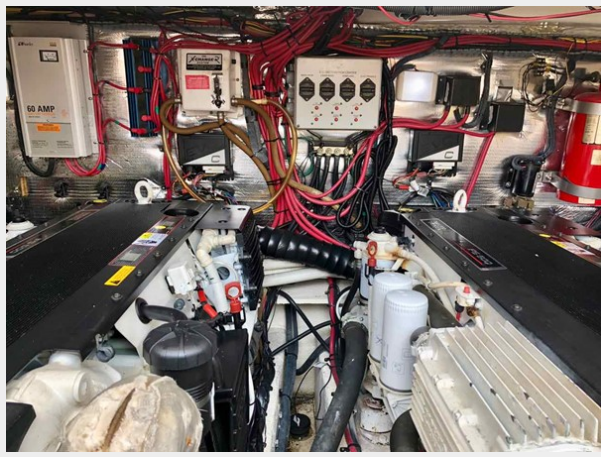












# CONTACTS

---

Andrey Shestakov, leading yacht broker of the sales department of Shestakov Yacht Sales Inc. Shestakov Yacht Sales Inc., the official representative of the Miami/Fort Lauderdale FL headquarters.

## Contact details

---

Email: [andrey@shestakovyachtsales.com](mailto:andrey@shestakovyachtsales.com)

Web: [shestakovyachtsales.com/en/](http://shestakovyachtsales.com/en/)

## Telephones

---

USA: +1(954)274-4435

## Office hours

---

Monday – Saturday: **9:00 - 21:00** EDT

Sunday: **closed**

## Address

---



Harbour Towne Marina, 850 NE 3rd St,  
STE 213, Dania, FL 33004