

HOPE AND GLORY — ISLAND PACKET YACHTS



Судостроитель:

ISLAND PACKET YACHTS

Год постройки: 2005

Модель: Крейсерская яхта

Цена: ЦЕНА ЯХТЫ ПО ЗАПРОСУ

Местонахождение: United States

Длина общая: 44' 7" (13.59m)

Ширина: 14' 3" (4.34m)

Макс. осадка: 5' 0" (1.52m)

Купить Hope and Glory — ISLAND PACKET YACHTS а также выбрать подходящую вам яхту из нашего каталога яхт вам поможет опытный яхтенный брокер Андрей Шестаков. На сегодняшний день компания Shestakov Yacht Sales Inc. имеет большое количество яхт в собственном списке продаж, а также тесно сотрудничает со всеми крупными яхтенными производителями по всему миру. Для того чтобы купить яхту Hope and Glory — ISLAND PACKET YACHTS а также проконсультироваться по любому вопросу связанному с покупкой, продажей, чартером яхт позвоните по телефону **+7(918)465-66-44**.

ОГЛАВЛЕНИЕ

ОГЛАВЛЕНИЕ	2
ХАРАКТЕРИСТИКИ	4
Обзор	4
Основная информация	4
Размеры	4
Скорость, вместимость и масса	4
Размещение	5
Корпус и палуба	5
Информация о двигателе	5
ПОДРОБНОЕ ОПИСАНИЕ	6
Overview	6
Исключения	15
Отказ от ответственности	15
ФОТОГРАФИИ	16
2	16
3	16
4	16
5	16
6	16
7	16
8	17
9	17
10	17
11	17
12	17
13	17
14	18
15	18

16	18
17	18
18	18
19	18
20	19
21	19
22	19
23	19
24	19
25	19
КОНТАКТЫ	20
Контактная информация	20
Телефоны	20
Время работы	20
Адрес	20

ХАРАКТЕРИСТИКИ

Обзор

HOPE AND GLORY is a spectacular, one-owner example of the Island Packet 420, which has been professionally maintained and continually upgraded over the years. Although this stunning IP420 has been loved, well cared for and sailed extensively, the owners no longer have time to fully enjoy her. Take advantage of this opportunity to become just the second owner of this popular and well-proven Island Packet model.

Основная информация

Тип судна: Крейсерская яхта

Модельный год: 2005

Год постройки: 2005

Страна: United States

Размеры

Длина общая: 44' 7" (13.59m)

Длина по ватерлинии: 37' 4" (11.38m)

Длина палубы: 42' 0" (12.80m)

Ширина: 14' 3" (4.34m)

Макс. осадка: 5' 0" (1.52m)

Трапы: 58' 10" (17.93m)

Длина привального бруса: 42' 0"
(12.80m)

Скорость, вместимость и масса

Водоизмещение: 30000 Pounds

Вместимость воды: 250 Gallons

Вместимость сточного бака: 60 Gallons **Объем топливного бака:** 160 Gallons

Размещение

Всего кают: 3

Всего коек: 2

Всего ком. состава: 4

Корпус и палуба

Материал корпуса: Fiberglass

Отделка корпуса: Aluminum

Дизайнер корпуса: Bob Johnson, N.A.

Информация о двигателе

Двигатели: 1

Производитель: Yanmar

Модель: 4JH-3TE

Тип двигателя: Inboard

Тип топлива: Diesel

ПОДРОБНОЕ ОПИСАНИЕ

Overview

VESSEL WALKTHROUGH

Island Packet Yachts have long been noted for their exceptionally livable designs. There is an abundant amount of interior stowage available in the salon, as elsewhere in the yacht, due in large part to the generous tankage being centrally located below the cabin sole. This feature also keeps these considerable weights low and close to the center of the yacht to maximize stability and minimize trim changes. All sole surfaces in the galley, companionway, and navigation areas are molded in a slip-resistant diamond pattern for improved safety and ease of maintenance in these frequently used areas. Beautiful handcrafted and custom cabinetry and joinery work is found throughout the yacht. Comfortable, thick cushions with designer fabric on the bunks, with upgraded UltraLeather in the main saloon, well placed light fixtures and handrails, numerous opening ports, dorade deck vents and overhead hatches, complete with OceanAir ship shades and screens, and a durable and easily maintained overhead and hull surfaces make the salon and the entire interior attractive, comfortable and practical. Most lighting has been updated to red or white operation for night time sailing and all portholes are equipped with Peek-a-Boo shades. Seven 12V fans throughout the interior provide air movement plus two air conditioning/reverse cycle heat units provide 24,000 BTU's of heating/cooling power.

MASTER STATEROOM: The owner's suite is forward and is a true delight with the entire beam of the yacht utilized for a grand and inviting retreat. There is a large island berth which is offset from the hull providing easy access from both sides. The aft section of the berth-top, mounted on gas support struts, lifts to reveal a large storage area ideal for those bulky items like blankets. Drawers, cabinets, storage bins and a deep hanging locker provide ample space for personal gear. A seat to port adds further convenience. Two overhead hatches, a dorade vent and several opening ports will keep this area bright and well ventilated. Overhead padeyes and hooks on the bulkhead provide convenient spots for hanging fishing poles and longer clothing items.

MASTER HEAD: Forward is a private ensuite head with a large separate stall shower. The shower area is fitted with a folding acrylic door, an upgraded single lever shower head and a built-in seat. There is also a deep S/S sink with vanity, marine toilet upgraded to electric flush, several lockers and drawers and excellent ventilation with an overhead hatch and opening portlights.

SALON: As you will see in the pictures, the salon is a warm and inviting area to lounge or entertain. With the custom upholstery, brass lamps and attention to detail you will want to spend a lot of time aboard. The hinged table is secured out of the way against the bulkhead. Behind this is a very nice bottle and glass rack. The table is easily lowered to make either a small or a large dining area. When the table is fully opened this also provides a great project area. If you wish to have additional friends or family stay aboard, the starboard settee pulls out to provide a double berth. Behind and under both settees are an immense amount of storage areas.

Aft to starboard of the salon is the nav area with an electrically powered swing-out seat and large hinged chart table. See "Nav Equipment" section below for more details.

The galley is aft of the nav, immediately to the starboard side of the companionway. For more details on the "Galley" below.

AFT CABIN: Features a very large Pullman-style athwartship berth, a large cedar-lined hanging locker and a generous bureau with several compartments. Two opening ports and an overhead hatch bathe the area in natural light and provide excellent ventilation.

AFT HEAD: Entered from either the main salon or through a private door in the aft cabin, the aft head, with its folding teak shower seat, wraparound vanity, oval polished sink, teak framed mirror, and bulkhead mounted shower unit with a pull around curtain provide particularly nice facilities for guests and crew. Shower drains in both heads have an electric drain pump.

HULL, DECK & EQUIPMENT

UNDERBODY

The FULL foil keel continues as the foundation of the Island Packet concept, and its design and construction provide a host of advantages to the cruising sailor: a moderate draft for access to a wider range of cruising grounds, low ballast placement for increased stability, superior protection for rudder and propeller, integral one-piece construction for maximum strength, and a highly effective airfoil shape for windward performance.

DECK

The 420 deck design offers all the key features long appreciated by Island Packet owners: a recessed foredeck with bulwarks for safety on deck, an anchor platform with two rollers for immediate access to both anchors, wide easy side decks for easy passage, full-length stainless steel cabin top handrails (no varnishing required), Dorade vents with SS guards, SS mast pulpits and high double lifelines with side and stern gates.

- 55# Rocna galvanized anchor w/200' 5/16" chain +/- 100' of rope rode
- 55# Lewmar Delta anchor w/ 100' 5/16" chain and 200' of rope rode
- Lighthouse 1501 horizontal windlass and capstan; deck foot switches and remote control in cockpit
- Extra lifeline gates forward (port and starboard) for easier boarding
- Mystic Marine folding boarding ladder at lifeline gate
- textaline cockpit cushions
- Kato arch with outboard motor crane

COCKPIT

The large cockpit is very comfortable with long contoured seats that accommodate a large crew or invite stretching out on the Textalene covered cockpit cushions. Features include a built-in insulated beverage locker, a folding table, two large seat lockers with interior lights, a separate helm seat with backrest, always popular molded stern rail seats with bottom cushions, a central gate leading to a stern platform, a hand held personal shower, deep swim ladder with rubber treads, padeyes for safety harness attachments and large cockpit scupper drain capacity.

PROPULSION

75 hp Yanmar 4JH3-TE turbo diesel, 4 cylinder, fresh water cooled engine.

- Racor fuel filter w/water separator is mounted on a door in the galley for easy access.
- Reverso Oil Change pump.
- Extensive sound control is achieved with lead-lined insulation and gasketed doors.
- Serviced annually (oil and coolant changed, fuel & oil filters replaced, impeller, hoses &

belts inspected.)

- PYI dripless prop shaft seal
- MaxProp three-blade variable pitch propeller

MISC EQUIPMENT

- Sidepower 6HP bow thruster with cockpit controls
- (2) Cruisair central air conditioning units rated at 16,000 and 8,000 BTU's.
- Numerous DC fans
- Lighting all upgraded to LED; some red nighttime lights added
- Viking 6-man hard case life raft (current - expires Oct 2020)
- Life Sling 2
- numerous spare parts, filters, specialized tools, etc. too numerous to list
- AB rigid bottom inflatable dingy (new 2017) with 6HP Yamaha outboard (2011 model) w/less than 20 hours
- Spectra 400 water maker

SAILS, CANVAS & RIGGING

The Island Packet 420 has been created with a somewhat taller configuration to take advantage of her extra sail carrying ability and to enhance both light air and upwind performance. With the furling mainsail, cutter rig and sail controls lines aft - sailing has become easier and more enjoyable than ever.

The contributions to performance and sail control from the Hoyt staysail boom would be hard to overstate. This simple device has "turbo-charged" the staysail's contribution to overall performance and makes the cutter rig better than ever. The 420 has excellent qualities for cruising under all points of sail in a wide variety of conditions with a very manageable and versatile rig.

- Charleston spars mast and boom with in-mast furling
- Garhauer rigid boom vang
- Dutchman Boom Brake
- Aluminum collapsing whisker pole on mast track
- Top down furler -Seldon GX15 plus all hardware with North Sails Genneker -G-AP3 -1206 sq ft
- Sail - North Roller Furling Main 8.2 oz Nordac New 2013.

- Sail- Staysail and 130% genoa
- Harken furlers for Genoa and Staysail
- Sail control lines aft to cockpit
- Cockpit storage bins for all sail control lines
- Stainless steel bimini and dodger bows. Windlass cover, hatch covers, dinghy chaps, outboard cover, helm cover

NAVIGATION AND ELECTRONICS

The nav area is just forward of the galley and has a full-size navigation table with a customized nav seat that swings out on a electrically operated hydraulic ram. There is a storage tray under the hinged tabletop, a locker under, another locker outboard of the table, and a chart drawer under the settee immediately forward of the nav area. The master electrical distribution panels are recessed, yet still easily accessible.

- Raymarine c125 Plotter/Radar bulkhead mounted w/six navigation chips
- Raymarine Digital Radome
- Raymarine i70 TriData repeaters (2) at companionway and chart table
- Raymarine i60 Wind
- Pactor Modem for SSB
- ICOM - IC-M802 SSB
- ICOM - MA-500TR class B AIS transponder
- Raymarine c95 Plotter/Radar helm mounted
- Raymarine Autopilot p70 w/hydraulic linear drive - Evolution Raymarine i70 control head
- ICM506 DSC capable VHF radio
- Icom Command mic at helm
- Tricolor masthead light with switch for masthead or deck running lights
- Kenwood Stereo JHD40BTR
- EPIRB Global Fix Pro
- Ritchie SP-5 Compass at helm
- A.G.A. Correa ceiling mounted compass in owner's stateroom
- WiFi booster

ELECTRICAL

- Northern Lights M673L2.3 generator (New 2007) approx 700 hours; dedicated G24 start battery
 - (6) AGM Group 31 Northstar house bank batteries 12v/100 amp/hour
 - (1) Group 24 dedicated engine start battery
 - Dual engine alternators incl. Balmar 110 amp with digital duo charger
 - Xantrax Truecharge 2 120V/12V 60 amp battery charger
 - Charles Marine 240V/12V 40 amp battery charger
 - Mastervolt BTM-III battery monitor at nav station
 - (2) 125V/30 amp shore power systems with hookups both fore and aft with selector switches (easy bow-in access)
 - (1) 240V 16 amp shore power system dedicated to 240V Charles charger
 - ProMariner 60 amp failsafe galvanic isolator

GALLEY

The galley is conveniently located at the base of the companionway on the starboard side. Ideal for the cruising sailor is its practical U-shaped design and its many features such as: generous counter space, cutlery drawers, pot and pan bin, large dry storage locker, and counter top cabinets, several deep storage drawers and a pull-out trash receptacle. There is also a well insulated divided refrigerator/freezer with lots of room for additional food for those longer trips. The slip resistant molded sole provides secure footing and easy maintenance - a great feature in the galley.

- Technautics 12V holding plate freezer and fridge systems; Top loading, injected froth type insulation throughout icebox tubs, insulated divider, electric drain pump, inside light with manual switch, hinged, double gasketed lid w/support strut.
- Microwave Oven 110 volt
- Large wrap-around design w/sea rails on all edges
- Gimballed 3-burner Force 10 LPG stove w/oven -stainless steel deluxe safety type, sealed burner top, lift off cover w/storage rack below, stainless steel guard rail w/harness hooks.
- Double stainless steel sink with deluxe polished finish, hot & cold pressure water tap, manual pump, retractable spray unit
- SeaGull water purification system

- Roll-away trash bin, teak paper towel holder, soap rack
- Deluxe teak dish rack & cutlery drawers
- Large storage areas above & below counter, storage drawer, cabinet, dry storage locker
- Cockpit instrument access cabinet

DESIGNER COMMENTS

The new 420 defines the latest generation of Island Packet designs with virtually every aspect of this yacht representing a significant evolution from our earlier models in this size range. With ongoing advances in construction technology, equipment selection, manufacturing processes and quality control measures, this will be one of the most desirable and best built yachts Island Packet has ever offered.

The 420 hull incorporates a host of new design elements that further improve a concept that I believe offers the best combination of seakeeping, safety, stability and speed available to the cruising sailor. New bow and stern configurations combine to increase boat speed through a longer sailing waterline and reduced resistance in waves, while refinements to the keel and rudder foil sections will benefit upwind performance, reduce drag and enhance steering. The hull continues to be molded as a one piece (integral hull and keel) solid tri-axial fiberglass structure, utilizing our pressure-fed resin impregnation system, PolyClad2 gel below the waterline and DuraShield gel on the topsides. I think no one in the marine industry, power or sail, is molding better fiberglass parts than Island Packet.

The 420 deck design continues to offer all the key features long appreciated by Island Packet owners: recessed foredeck with bulwarks, anchor platform with two rollers (our exclusive SeaSafe patented design), full length stainless steel cabin top handrails, beautifully molded detail for hardware and a new and improved dodger/windshield mount, and Dorade vents now with stainless steel cowls and welded guards. The cockpit offers long, contoured seats with big lockers under push button latch seat hatches with gas support struts, an insulated beverage box and hand held shower, separate helm seat with backrest and premium rack and pinion pedestal mounted steering (with provision for auto pilot), molded stern rail seats and a central gate leading to a stern platform. As always, sail control lines are lead aft making sail trim or changes convenient from the cockpit. Bins located at the forward end of both coamings have hinged tops and provide handy and neat storage for these lines. With the available option of a roller furling mainsail (now selected by the majority of our new owners), sailing has become easier and more enjoyable than ever. It's a real pleasure to be able to quickly set, trim or stow the sails without

leaving the cockpit.

While on the subject of the rig, the 420 has been created with a somewhat taller configuration to take advantage of the extra sail carrying ability of this design and to enhance both light air and upwind performance. I should also add that the contributions to performance and sail control from the Hoyt® staysail boom would be hard to overstate. This simple device has “turbo-charged” the staysail’s contribution to overall performance and makes the cutter rig better than ever. I believe Island Packet is the only manufacturer to offer this cutter design configuration, and it is a very big plus for the cruising couple. The 420 should have excellent qualities for cruising under all points of sail in a wide variety of conditions with a very manageable and versatile rig.

I think perhaps the most exciting aspect of the new 420 is the interior arrangement. The beam of over 14 feet and a lot of usable hull length have enabled me to create very spacious accommodations with all the amenities that I think our owners are looking for, along with lots of storage space and large tank capacities to meet the demands of extended cruising. This is going to be a great boat on which to spend a lot of time.

The owner’s quarters are located forward and include a private head compartment with stall shower. The stateroom introduces a new arrangement with a large double berth offset to starboard and angled away from the hull side to allow access from either side. The berth top is hinged and supported with gas struts and may be raised to access a generous storage bin underneath for blankets and the like. Additional drawers, bureaus, shelves, and a cedar lined hanging locker provide ample room for personal items. A dressing seat adds further convenience, and two deck hatches, a Dorade vent and several opening ports will keep this area bright and breezy, as are all other areas throughout the interior.

The adjoining head has a sink vanity with cabinet space over and under, “captain’s-chair” seating for the toilet, and built-in medicine chest and linen drawers. The shower includes a molded seat and folding textured acrylic door that stows flat against the bulkhead when not in use. Space (and access) has been provided for owner/dealer installation of a bow thruster under the shower seat area. European owners are more inclined to make this installation, but I think it may be just a matter of time until it becomes common in the USA. We’ve been praised in the press for having some of “the best heads afloat” and I think this one will further that reputation.

The big forepeak is reached through a tall bulkhead door in the shower area. This area is unique in that it features our usual divided chain locker forward (prepared for windlass installation and chain control), plus a separate area immediately aft that will be handy for storage of items like

fenders, extra anchors and rodes, etc., when underway.

The aft guest stateroom has a wide double berth, ample storage in a hanging locker and bureau, and private entrance to the aft head compartment. The aft head may also be accessed from the salon area, and includes a shower with curtained enclosure and folding seat over the toilet. The sink vanity has cabinet storage over and under and, as with the forward head, is finished in light colored Formica® laminates with varnished teak trim for an attractive, bright and practical finish. Shower drains in both heads have an electric drain pump discharging overboard, with sole drains configured to work at rest or under sail.

The main salon is notable for its overall spaciousness. Once again I've incorporated our long popular arrangement of full length facing settees, with the starboard L-shaped settee able to convert into a double with a pull-out extension. Our trademark folding dining table hinges from the bulkhead storage rack to provide for either a large serving/dining area or, when retracted, a completely open salon. Large storage areas are available under and behind both port and starboard settees, in cabinets outboard and above the settees and in a cedar lined hanging locker. Large capacity tanks for water, fuel and waste are located under the sole, keeping these considerable weights low and close to the center of the yacht to maximize stability, minimize trim changes and increase useful storage elsewhere.

The full size navigation table with swing-out seat, adjacent to the main salon, should please the most ardent navigator, and includes recessed master electrical distribution panels with numerous spare breakers and ample panel space for dealer/owner installed electronics. A storage tray is provided under the hinged tabletop, with a locker under and outboard of the table and a chart drawer under the settee immediately forward of the nav area.

The 420 galley combines the best features of all previous Island Packet models and is notable for its generous counter space, storage room and numerous convenience features. Our recently developed ice box installation with hinged and double gasketed push-button latch lid and super-insulated box is factory prepared for dealer/owner installation of refrigeration. There's plenty of room for block ice if preferred, or capacity for extra refrigerated storage on longer voyages. This installation was developed jointly with a professional refrigeration manufacturer and tested by an independent lab during its development. It has resulted in the best insulating qualities of any marine ice box design the lab has tested (and they've done quite a few). Seaward's recently introduced sealed-top LPG range is standard, along with a microwave oven (A/C operation only). Several deep storage drawers, a pull-out trash receptacle, dish rack with cutlery drawers, pot and pan bin, dry storage lockers and counter top cabinets should make one feel right at home. All sole surfaces in the galley, companionway and navigation areas are molded in a slip-resistant

diamond pattern for improved safety and ease of maintenance in these frequently used areas. A teak grate in the sole covers a lift-out dust tray, access to the fuel and water tank fittings and the lighted bilge sump.

In the twenty years since the founding of Island Packet Yachts, I am more excited than ever about the yachts we are creating. In many ways, the new 420 represents the best of everything that has earned Island Packet its position as America's Cruising Yacht Leader.

Bob Johnson, N.A.

President

Исключения

При продаже яхты исключаются личные вещи владельца.

Отказ от ответственности

Компания предоставляет описание судна или яхты добросовестно, но не может гарантировать точность этой информации, а также не ручается за техническое состояние. Покупатель должен проинструктировать своих агентов или оценщиков исследовать представленную информацию более подробно, по собственному желанию. Продажа судна или яхты, изменение цены или снятие с продажи будет происходить без предварительного уведомления.

ФОТОГРАФИИ

2



3



4



5



6



7



8



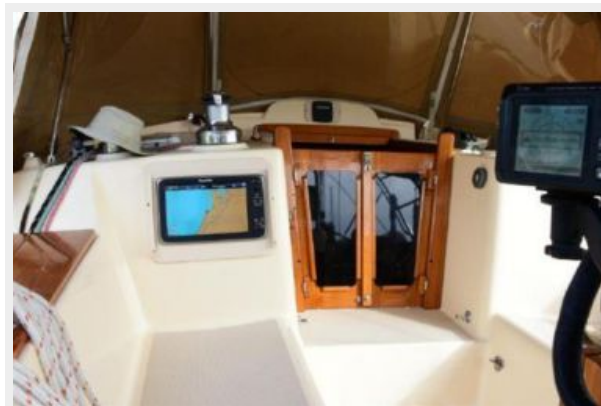
9



10



11



12



13



14



15



16



17



18



19



20



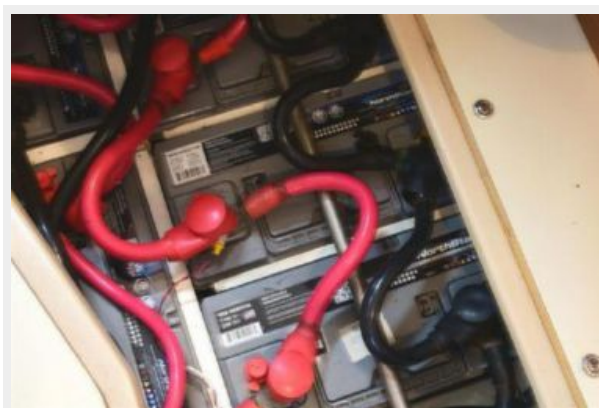
21



22



23



24



25



КОНТАКТЫ

Андрей Шестаков (Andrey Shestakov) – ведущий яхтенный брокер отдела продаж яхт и судов компании Shestakov Yacht Sales Inc. Официальный представитель Shestakov Yacht Sales Inc. для русскоговорящих клиентов в центральном офисе компании в Майами/Форт Лодердейл/Флорида/США.

Контактная информация

Email: andrey@shestakovyachtsales.com

Web: shestakovyachtsales.com

Телефоны

Краснодарский край: **+7(918)465-66-44**

США, Майами, Флорида: **+1(954)274-4435**

Время работы

Понедельник – Суббота: **9:00 - 21:00**
EDT

Воскресенье: **Закрито**

Адрес



Harbour Towne Marina, 850 NE 3rd St,
STE 213, Dania, FL 33004