

PENTIMENTO — PACIFIC SEACRAFT



Судостроитель: PACIFIC SEACRAFT

Год постройки: 1997

Модель: Крейсерская яхта

Цена: **ЦЕНА ЯХТЫ ПО ЗАПРОСУ**

Местонахождение: United States

Длина общая: 40' 0" (12.19m)

Ширина: 12' 5" (3.78m)

Макс. осадка: 6' 1" (1.85m)

Купить **PENTIMENTO — PACIFIC SEACRAFT** а также выбрать подходящую вам яхту из нашего каталога яхт вам поможет опытный яхтенный брокер Андрей Шестаков. На сегодняшний день компания **Shestakov Yacht Sales Inc.** имеет большое количество яхт в собственном списке продаж, а также тесно сотрудничает со всеми крупными яхтенными производителями по всему миру.

Для того чтобы купить яхту **PENTIMENTO — PACIFIC SEACRAFT** а также проконсультироваться по любому вопросу связанному с покупкой, продажей, чартером яхт позвоните по телефону **+7(918)465-66-44**.

ОГЛАВЛЕНИЕ

ОГЛАВЛЕНИЕ	2
ХАРАКТЕРИСТИКИ	5
Обзор	5
Основная информация	6
Размеры	6
Скорость, вместимость и масса	6
Размещение	7
Корпус и палуба	7
Информация о двигателе	7
ПОДРОБНОЕ ОПИСАНИЕ	8
ACCOMMODATIONS	8
GALLEY	9
HEAD	10
WATER SYSTEMS	10
HULL AND DECK	10
SAILS AND RIGGING	11
ENGINE & MACHINERY	12
ELECTRICAL	12
ELECTRONICS	13
OTHER EQUIPMENT	13
EXCLUSIONS	13
DISCLAIMER	14
Исключения	14
Отказ от ответственности	14
ФОТОГРАФИИ	15
CA4D70D5-E67A-4276-A423-662681315F8B_1_201_a	15
3BAD5D10-9D8E-4A0D-A66E-8EB4877264D3_1_201_a	15
9E2F659E-1DEF-4F62-AEC2-1A5F2EDA1CE9_1_201_a	15

C55EB3BD-7614-4040-8785-7BEA53BFC961_1_201_a	15
45119F14-03CE-4539-ACD1-ABC3355C8DB5_1_201_a	16
5E36C3AC-D3AF-4F29-8A09-959A49F276E3_1_201_a	16
1D234FF6-85CE-43A8-963A-6609286CDD04_1_201_a	16
50530A41-30D0-4B7A-AE27-15CBBC0F0F88_1_201_a	16
53B51963-8B70-4E84-9E6D-06D8C6A1A294_1_201_a	17
98DBA6D2-F1F4-48AE-B4A8-16A65EC37834_1_201_a	17
F34EC86D-E1F6-417B-90D0-E030172C4BDF_1_201_a	17
A20BAEA6-1007-4AB2-808C-565D084CFFBE_1_201_a	17
9D0419C5-3091-45DC-88FD-35409F56ACFA_1_201_a	18
0518C187-F380-49A9-B3E3-F13490E2CDCB_1_201_a	18
91730F77-24BE-4F95-A282-26B235C2902E_1_201_a	18
4C57F343-4BB0-4714-B974-5CDA819EE1E2_1_201_a	18
ADBF872A-BC40-4999-8012-8024F89A5F70_1_201_a	19
C6EC5A6B-4097-4E6E-B755-79D5DC080D35_1_201_a	19
E60C8959-2EA5-4D91-BB7A-66193B6E2FDC_1_201_a	19
32F8AFF4-089A-4895-97A3-8A8E4E6E1DAB_1_201_a	19
25A0C067-FDBF-4276-9BFA-5D0AD94AC289_1_201_a	19
57F4DE94-B54C-4A78-8D60-DCA17E1E62F5_1_201_a	19
6708BEEC-A744-421B-A506-A56680268ED7_1_201_a	20
26549215-A6A7-485A-81B6-8DBA30391DFC_1_201_a	20
5995E0CB-B470-41E2-BCE5-8BA83508C7F0_1_201_a	20
0285F2E6-051F-40D5-B08F-301540E07D9F_1_201_a	20
975D6E40-4096-4B40-B1EC-B3DBAD53A610_1_201_a	21
16276A06-DA3F-4483-A007-B31F9D8F2BF1_1_201_a	21
625242D8-0C2C-4290-B187-8E45D7C70DC1_1_201_a	21
D2B4E54D-A5E4-4FF7-8409-684B829A72D8_1_201_a	21
BAAC8112-F864-4EF4-A716-18A1DA900D6A_1_201_a	21
11D0446F-B556-4009-BACA-6D7B3FD3C8C8_1_201_a	21

DF2F9CAD-F9A8-40F6-8463-788ADC5952C7_1_201_a	22
C8383EFD-10F4-423D-B278-257A41432477_1_201_a	22
F6F80768-D21F-42A7-A7BE-FF23AA8A551D_1_201_a	22
9D8AB9B5-107F-46A7-BB8B-34F2DE5551DD_1_201_a	22
06197E5A-725F-45A4-AC88-851EBD0EC1F3_1_201_a	23
015ECFCB-584B-47D5-A019-9B2765993192_1_201_a	23
1C93E9CE-FAA3-4341-BE30-2E8D690E89D6_1_201_a	23
494C02E6-8E68-4230-9AFC-69835DA74719_1_201_a	23
265CF50C-299E-4425-BEA5-73800268F17F_1_201_a	24
9955427F-ADA6-40F6-A0EE-3789F9AB62E4_1_201_a	24
EBCA353B-04E5-4A4F-8DD8-EC0F6D89A895_1_201_a	24
82A74B7C-578E-42BD-AC52-4B84581A061F	24
7D30FE34-B4C3-4C7F-9D45-6A95BBCE094E_1_201_a	25
89820438-F213-4EA3-9B33-C8149C954AC6_1_201_a	25
3BC9CFCD-5570-49C3-95F4-4995BC956F50_1_201_a	25
9DDB4384-D851-4E04-A00F-273C1C6971EC_1_201_a	25
20579274-0A19-4FFE-9942-2410E99BC3AC_1_201_a	26
9C085A48-3BD7-40F5-9D46-7E7C100EB71D_1_201_a	26
70E0CE38-EB49-461A-A5DF-773F46683EC7_1_201_a	26
CPYB Logo	26
Crealock44ProfileSailplan	27
Crealock44InteriorPlan	27
КОНТАКТЫ	28
Контактная информация	28
Телефоны	28
Время работы	28
Адрес	28

ХАРАКТЕРИСТИКИ

Обзор

The Pacific Seacraft 40, often regarded as the queen of the Pacific Seacraft fleet, is the latest design collaboration in their line of thoroughbred blue water cruising yachts by renowned marine architect, Bill Crealock.

This one-owner Pacific Seacraft 40 has never been lived aboard or extensively cruised. This gorgeous vessel has been lightly used, primarily for weekend recreation and has only 822 engine hours!

The Pacific Seacraft 40 is sure to turn heads in any anchorage or marina. Not only is it one of the most widely respected and well-known offshore cruising vessels, but it is also one of the most aesthetically pleasing and graceful yachts on the water. It is no small achievement that Pacific Seacraft has been chosen by Fortune Magazine as one of the best American made products, two years in a row.

Here's what Mr. Crealock says about his design:

"Outwardly, the new Pacific Seacraft 40 closely resembles its larger and smaller sisters, but in fact each model in the line incorporates modification to the shape and refinements aimed mostly at improved performance and safety.

The PS-40 retains the general form of split underbody with a ventral fin between the keel and large skeg. As before the primary aim throughout is the ease of control by a small crew in bad conditions. My own belief is that one should not travel only to arrive: the passage itself should be relaxing and fun. We formed the underbody for this purpose, and we have had numerous reports from other boats in the line of surfing down waves in heavy weather at speed/length ratios of over 2 with easy control.

I also believe that speed on passage is quite different from speed round the buoys and that a small crew should be able to sail an offshore cruiser to its full potential without exhaustion."

Ask anyone who has sailed Pacific Seacrafts offshore and they will confirm Bill Crealock's assertion; you truly do arrive more rested. The motion comfort is remarkable.

Here is what some of the leading yachting magazines have said about the Pacific Seacraft 40:

In many ways, the Pacific Seacraft 40 defines a blue water Passagemaker. There's no question that cruisers who want to experience their dream firsthand will be right at home in this boat. -Sail Magazine

The moment one steps aboard, it is clear that every part of the boat has been thought out carefully by someone experienced in the conditions likely to be encountered offshore. A yacht like this could be taken off the production line and confidently sailed straight off into the sunset

without another thought. -Yachting Monthly

Her engine hours are an indication of a vessel sailed rather than motored. Your personal inspection will find that she has been maintained to a very high standard throughout and may be the best pre-owned example on the market at this time. She's a true pearl among other Pacific Seacrafts and certain to meet or exceed expectations.

These gorgeous boats also enjoy an enviable reputation for sea-kindly behavior and respectable speed. She'll surprise you with a superb sail plan that is not underpowered.

If you are in the market for a safe, strong cruising boat that is eye candy as well, you owe it to yourself to come and see PENTIMENTO. Call the listing broker and make an appointment to see her today- you won't be disappointed!

Основная информация

Тип судна: Крейсерская яхта

Модельный год: 1997

Год постройки: 1997

Страна: United States

Номер регистрации в береговой охране: 1053540

Кубрик: Да

Размеры

Длина общая: 40' 0" (12.19m)

Длина по ватерлинии: 31' 3" (9.53m)

Ширина: 12' 5" (3.78m)

Макс. осадка: 6' 1" (1.85m)

Трапы: 55' 0" (16.76m)

Скорость, вместимость и масса

Водоизмещение: 24000 Pounds

Вместимость воды: 150 Gallons

Вместимость сточного бака: 20 Gallons

Объем топливного бака: 70 Gallons

Размещение

Всего кают: 2

Всего коек: 4

Спальные места: 6

Всего ком. состава: 1

Корпус и палуба

Материал корпуса: FRP

Материал палубы: Fiberglass Sandwich

Комплектация корпуса: Fin & Spade

Цвет корпуса: GREEN

Отделка корпуса: Aluminum

Дизайнер корпуса: W.I.B. Crealock

Дизайнер экстерьера: W.I.B. Crealock

Дизайнер интерьера: W.I.B. Crealock

Информация о двигателе

Двигатели: 2

Производитель: Yanmar

ПОДРОБНОЕ ОПИСАНИЕ

ACCOMMODATIONS

Forward Stateroom: The forward stateroom has a centerline double berth that is 78" x 55" x 24". Beneath the berth are three large cedar-lined drawers, while at the foot of the bed are teak double doors for access to the chain locker.

Teak and holly steps are on either side to get into the berth. There are nightstand shelves with cubby storage and a locker beneath. Lockers with doors are on either side aft of the shelves. On starboard, there is a hanging locker with a shelf above. On port is a Corian counter with a stainless steel sink and faucet; there is medicine cabinet storage above and a locker below the sink. Along either hullside are fiddled shelves running from the lockers to the foot of the bed. Privacy to this stateroom is via a bi-fold door that stows neatly out of the way when not in use. Lighting and ventilation are provided by two overhead lights, two reading lights, a Hella fan, two ports and an overhead hatch. Headroom is 6'4".

Saloon: As you move forward into the saloon, on the port side is a straight settee that, at 6'4" long, makes a great sea berth. There is storage beneath it and behind the seatbacks. Above and behind the seat, there is a fiddled shelf in the center, a locker aft and an angled entertainment center forward. On starboard is a U-shaped dinette, which can be converted to make an 84"x 54" berth. The dinette table has a leaf that can easily be put on for seating when needed on either side of the saloon. There is storage above and behind these seatbacks as well. Above and behind that is another fiddled shelf on center with lockers fore and aft. Lighting and ventilation are provided by two overhead lights, three reading lights, two Dorades, five opening ports and a Hella fan. Headroom is 6'6".

Nav station: Located on port aft of the settee, the forward-facing nav station has a large seating area with storage beneath it and plenty of room for charts. There are two lockers beneath the chart table as well as a drop-door locker outboard of the nav seat. There is a small shelf space above that and two shelving areas above that. Lighting and ventilation are provided by an overhead light, a chart light, a Hella fan and an opening port. Headroom here is 6'4".

Galley: The wrap-around galley area has loads of counter space and with good bracing positions, is designed perfectly for meal preparation at sea. The double sink is oriented on centerline and has lockers beneath it on the walk-thru side as well as within the galley. Moving around from the sink, there is a tip out trash bin and a stack of four drawers to the right of it. Continuing around along the hullside, there is a locker with shelves followed by the stove. There is storage space beneath the stove and a drop-down locker below that. Continuing around to the right of the stove and back towards centerline is the well-insulated icebox. Above the counter, along the hull, there is a locker over the icebox and sliding door storage the length of the counter forward of that. Lighting and ventilation in the galley are provided by 3 overhead lights, an overhead hatch, a Hella fan and a large opening port. Headroom is 6'3".

Head: Upon entering the head, there is a countertop and sink directly ahead. There are two lockers and drawers beneath the counter, a locker at the aft end of the counter and shelving with two sliding doors above the counter. To the left is the head, with a wet locker above that and a mirror above the wet locker. Forward of the sink is a separate stall shower. Lighting and ventilation are provided by an overhead hatch, an overhead light and 2 opening ports. Headroom is 6'3".

Aft stateroom: The aft stateroom is at the base of the companionway on starboard. As you enter, there is a cedar-lined hanging locker in front of you with a fiddled shelf above it. To your left is a small fiddled shelf with a dressing mirror above that. The double berth is a spacious 80"x 20"x 51" and has good headroom above it. There is a wide fiddled shelf running along the hullside the length of the berth as well as two drawers beneath it. Lighting and ventilation are bright and airy, with an overhead light, a reading light, 3 opening ports and a Hella fan. The headroom in this cabin is 6'3".

- Teak handcrafted interior with solid hardwoods
- Teak house sides
- Hand-rubbed satin varnish finish
- Gloss varnish fiddle details
- Teak and holly cabin sole
- Positive locking floorboards
- Teak staving along hull sides
- Padded headliner with zippers to access deck hardware
- Handcrafted custom innerspring mattress in the forward stateroom
- Alpenglow teak overhead lighting (9)
- Bowmar hatches (4)
- Hatches re-glazed, painted and rebed
- Stainless steel portholes (14)
- Stainless steel reading lamps (6)
- Hella fans (5)

GALLEY

- Corian countertops with teak fiddles
- Deep double stainless steel sink
- Gooseneck hot and cold water mixer
- Cutting board sink insert
- Freshwater foot pump
- 10 cu. ft. top loading icebox with hinged Corian lids
- Icebox pump-out
- Adler Barbour refrigerator/freezer
- Force 10 gimballed three-burner LPG stove with oven, broiler and thermometer
- Laminate and teak stove counter cover

- Stern LPG locker will accept two 20# LPG bottles

HEAD

- Bi-fold solid panel teak door
- Fiddled Corian countertop
- Oval stainless steel sink
- Hot/Cold water mixer with pull out sprayer wand
- Fresh water foot pump
- Separate shower stall
- Teak shower grate
- Teak shower seat
- Hot/Cold water mixer with pull out sprayer wand
- Electric shower sump pump
- Shower curtain on tracks
- Grab bars (2)
- Sani Marin electric fresh water flush head ('18)
- Sani Marin SFA toilet control and holding tank monitor ('18)
- Jabsco macerator pump
- Wet locker

WATER SYSTEMS

- Dockside water connection
- Jabsco fresh-water pump
- Parr accumulator tank
- Attwood 6 gallon hot water heater ('19)
- Flo-jet washdown pump
- Jabsco electric bilge pump ('18)
- Whale manual bilge pump
- Thru-hulls lubricated ('19)

HULL AND DECK

- Lead 6'1" keel
- Bottom faired smooth and painted annually
- Green Awlgrippped hull with gold cove and boot stripes ('06)
- Topsides paint maintained annually with Awlcare
- Solid teak rub strake
- Off white deep patterned non-skid deck and housetop
- Extended stainless steel bow platform

- Double stainless steel anchor rollers
- CQR 45lb anchor with 50' of 5/16" G4 chain and 250' of 3/4" nylon rode
- Kong swivel anchor connector
- Muir electric windlass with up and down footswitches
- Divided bow chain lockers
- Stern chain locker with deck pipe and anchor roller
- Fortress FX23 stern anchor with 10' of 5/16" G4 chain and 200' of 3/4" nylon rode
- Chromed bronze mooring cleats (8)
- 3" hawse pipes at the bow (2)
- 30" high stanchions mounted on bulwarks
- Double stainless steel wire lifelines
- Padded lifelines around the cockpit
- Stern, port and starboard boarding gates
- Stainless steel swim ladder
- Mast safety bars
- Stainless steel Dorades on teak boxes (2)
- Fiberglass coaming boxes with teak fiddles
- Gloss varnished teak grab rails and eyebrows
- Teak batten companionway slider and drop boards
- Brightwork varnish serviced annually
- Dodger
- Cockpit pad eyes (2)

SAILS AND RIGGING

The North sails were installed in mid-2011, used for the remainder of the 2011 and 2012 seasons, put in storage until the 2017 and used thru 2019, so they have about 5 ½ seasons on them.

- Harken genoa and staysail furlers
- Lefiell keel stepped double spreader mast
- 1x19 stainless steel wire standing rigging
- Standing rigging inspected and serviced annually; last was ('20)
- Rig was removed, stripped of lines, furlers and wire and stored indoors annually
- Mast mounted whisker pole with track and car
- Tides Marine sail track system
- Forespar rigid boom vang
- Harken mainsheet track and car
- Inboard and outboard genoa tracks
- Husetop staysail tracks
- Running backstays
- Harken organizer and turning blocks
- Harken #32 two speed self-tailing control winch

- Harken #40 two speed self-tailing control winch
- Harken #42 two speed self-tailing control winches (2)
- Harken #53 two speed self-tailing primary winches (2)
- Spinlock line clutches (10)
- North 3DL Marathon main ('11)
- North 3DL Marathon 120% jib ('11)
- Ullman Dacron staysail
- North Asymmetrical spinnaker
- Spinnaker halyard
- Control lines all led aft to the cockpit
- Mainsail cover
- Lazy jacks

ENGINE & MACHINERY

- Yanmar 4JH2E 54HP freshwater cooled diesel engine with 822 hours
- Exhaust hose replaced ('17)
- Raw water pump replaced ('18)
- Dripless shaft seal
- Three-blade Max-Prop feathering propeller
- Whitlock stainless steel destroyer wheel and steering pedestal
- Morse single lever engine control
- Throttle & shift cables lubed ('19)
- Ritchie compass
- Soundown engine compartment sound insulation
- Electric fuel gauge
- Engine room light
- Espar diesel cabin heater

ELECTRICAL

- Hubble 30A 120V shore power connections (2)
- 50 ft. shore power cord
- 120V electrical panel with volt and amp meters
- 120 V receptacles throughout with GFCI protection
- 12v electrical panel with volt and amp meters
- Cole Hersee battery selector switches (2)
- Heart interface charger/inverter
- Link 2000-R charge controller
- 80 amp alternator
- Heart interface echo charger
- West Marine battery combiner

- Two Lifeline GPL-4DL AGM house batteries for 420AH ('17)
- Lifeline GPL-4DL AGM starting battery ('17)

ELECTRONICS

- Garmin radar ('09)
- Garmin GPS Map 5212 12" chart plotter/radar ('09)
- Garmin GPS antenna ('09)
- B&G autopilot ('18)
- Three B&G Multi displays at the helm ('18))
- NavPod ('18)
- B&G Multi-display at nav ('18))
- Airmax Triducer ('18))
- B&G V50 VHF radio at the nav ('18))
- West Marine 160 floating handheld VHF
- Shakespeare TV antenna
- Samsung 22" flat-screen TV
- Sony Blu-ray disc CD player
- Alpine IDA-X305 stereo
- Kenwood stereo speakers in the saloon

OTHER EQUIPMENT

- ACR Global Fix 406 MHz EPIRB (Needs recertification)
- Life Sling overboard recovery system in hard case
- Emergency tiller
- First Alert CO2 detector
- Firdell Blipper radar reflector
- Ships bell
- Near-full boat awning with battens
- Cockpit cushions
- Fenders and dock lines
- Boathook
- PFD's
- Chelsea ships Brass clock
- Chelsea ships Brass barometer
- Edson outboard motor pad
- Outboard motor lifting crane

EXCLUSIONS

Owner's personal effects and any items not specifically described in this listing

DISCLAIMER

potential purchasers should assume that any items on the vessel at the time of viewing, but not specifically listed on this specification sheet, are not included with the sale of the yacht. These specifications are believed to be correct but cannot be guaranteed. Specifications are provided for information purposes. Data was obtained from sources believed reliable but is not guaranteed by owner or brokers. Engine hours are approximate, may be reported verbally by the seller, and are recorded at the time and date of the original listing of this vessel. Owner's use during the time of this listing may affect the total engine hours upon a prospective buyer's inspection. Buyer assumes responsibility to verify all speeds, consumptions, capacities and other measurements contained herein and otherwise provided, and agrees to instruct his/her agents or his/her surveyor to confirm such details prior to purchase. This vessel is subject to sale, price and inventory changes or withdrawal from market without notice.

Исключения

При продаже яхты исключаются личные вещи владельца.

Отказ от ответственности

Компания предоставляет описание судна или яхты добросовестно, но не может гарантировать точность этой информации, а также не ручается за техническое состояние. Покупатель должен проинструктировать своих агентов или оценщиков исследовать представленную информацию более подробно, по собственному желанию. Продажа судна или яхты, изменение цены или снятие с продажи будет происходить без предварительного уведомления.

ФОТОГРАФИИ

CA4D70D5-E67A-4276-A423-
662681315F8B_1_201_a



3BAD5D10-9D8E-4A0D-A66E-
8EB4877264D3_1_201_a



9E2F659E-1DEF-4F62-AEC2-
1A5F2EDA1CE9_1_201_a



C55EB3BD-7614-4040-8785-
7BEA53BFC961_1_201_a



**45119F14-03CE-4539-ACD1-
ABC3355C8DB5_1_201_a**



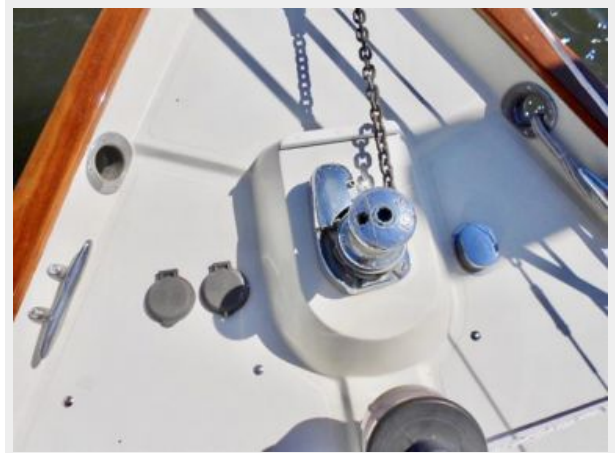
**5E36C3AC-D3AF-4F29-8A09-
959A49F276E3_1_201_a**



**1D234FF6-85CE-43A8-963A-
6609286CDD04_1_201_a**



**50530A41-30D0-4B7A-AE27-
15CBBC0F0F88_1_201_a**



53B51963-8B70-4E84-9E6D-
06D8C6A1A294_1_201_a



98DBA6D2-F1F4-48AE-B4A8-
16A65EC37834_1_201_a



F34EC86D-E1F6-417B-90D0-
E030172C4BDF_1_201_a



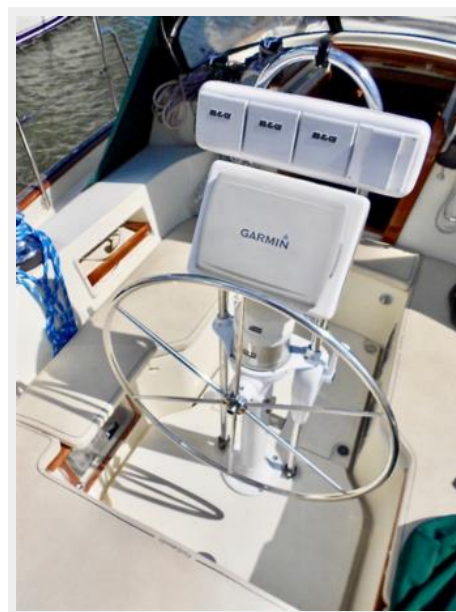
A20BAEA6-1007-4AB2-808C-
565D084CFFBE_1_201_a



0518C187-F380-49A9-B3E3-
F13490E2CDCB_1_201_a



9D0419C5-3091-45DC-88FD-
35409F56ACFA_1_201_a



91730F77-24BE-4F95-A282-
26B235C2902E_1_201_a



4C57F343-4BB0-4714-B974-
5CDA819EE1E2_1_201_a



**ADBF872A-BC40-4999-8012-
8024F89A5F70_1_201_a**



**C6EC5A6B-4097-4E6E-B755-
79D5DC080D35_1_201_a**



**E60C8959-2EA5-4D91-BB7A-
66193B6E2FDC_1_201_a**



**32F8AFF4-089A-4895-97A3-
8A8E4E6E1DAB_1_201_a**



**25A0C067-FDBF-4276-9BFA-
5D0AD94AC289_1_201_a**



**57F4DE94-B54C-4A78-8D60-
DCA17E1E62F5_1_201_a**



6708BEEC-A744-421B-A506-
A56680268ED7_1_201_a



26549215-A6A7-485A-81B6-
8DBA30391DFC_1_201_a



5995E0CB-B470-41E2-BCE5-
8BA83508C7F0_1_201_a



0285F2E6-051F-40D5-B08F-
301540E07D9F_1_201_a



975D6E40-4096-4B40-B1EC-
B3DBAD53A610_1_201_a



16276A06-DA3F-4483-A007-
B31F9D8F2BF1_1_201_a



625242D8-0C2C-4290-B187-
8E45D7C70DC1_1_201_a



D2B4E54D-A5E4-4FF7-8409-
684B829A72D8_1_201_a



BAAC8112-F864-4EF4-A716-
18A1DA900D6A_1_201_a



11D0446F-B556-4009-BACA-
6D7B3FD3C8C8_1_201_a



**DF2F9CAD-F9A8-40F6-8463-
788ADC5952C7_1_201_a**



**C8383EFD-10F4-423D-B278-
257A41432477_1_201_a**



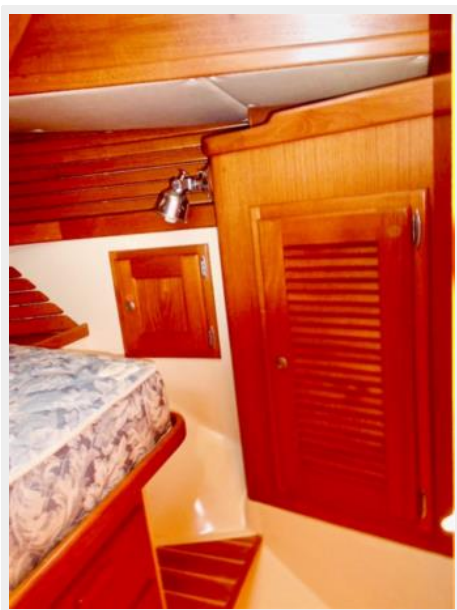
**9D8AB9B5-107F-46A7-BB8B-
34F2DE5551DD_1_201_a**



**F6F80768-D21F-42A7-A7BE-
FF23AA8A551D_1_201_a**



06197E5A-725F-45A4-AC88-
851EBD0EC1F3_1_201_a



015ECFCB-584B-47D5-A019-
9B2765993192_1_201_a



1C93E9CE-FAA3-4341-BE30-
2E8D690E89D6_1_201_a



494C02E6-8E68-4230-9AFC-
69835DA74719_1_201_a



9955427F-ADA6-40F6-A0EE-
3789F9AB62E4_1_201_a



265CF50C-299E-4425-BEA5-
73800268F17F_1_201_a



EBCA353B-04E5-4A4F-8DD8-
EC0F6D89A895_1_201_a



82A74B7C-578E-42BD-AC52-
4B84581A061F



7D30FE34-B4C3-4C7F-9D45-
6A95BBCE094E_1_201_a



89820438-F213-4EA3-9B33-
C8149C954AC6_1_201_a



3BC9CFCD-5570-49C3-95F4-
4995BC956F50_1_201_a



9DDB4384-D851-4E04-A00F-
273C1C6971EC_1_201_a



9C085A48-3BD7-40F5-9D46-
7E7C100EB71D_1_201_a



20579274-0A19-4FFE-9942-
2410E99BC3AC_1_201_a



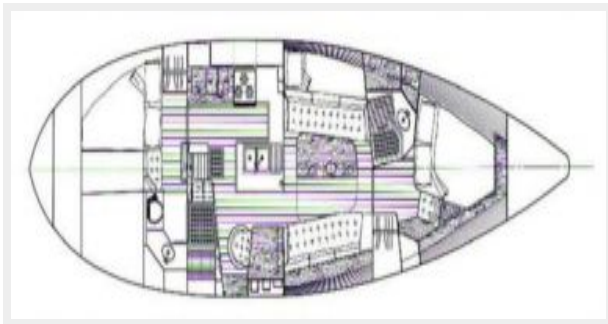
70E0CE38-EB49-461A-A5DF-
773F46683EC7_1_201_a



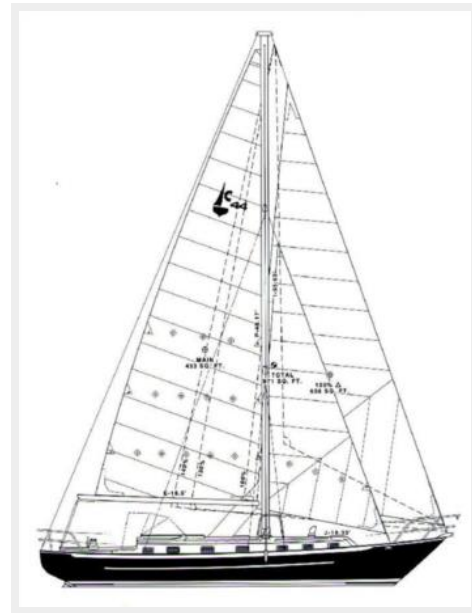
CPYB Logo



Crealock44InteriorPlan



Crealock44ProfileSailplan



КОНТАКТЫ

Андрей Шестаков (Andrey Shestakov) – ведущий яхтенный брокер отдела продаж яхт и судов компании Shestakov Yacht Sales Inc. Официальный представитель Shestakov Yacht Sales Inc. для русскоговорящих клиентов в центральном офисе компании в Майами/Форт Лодердейл/Флорида/США.

Контактная информация

Email: andrey@shestakovyachtsales.com

Web: shestakovyachtsales.com

Телефоны

Краснодарский край: **+7(918)465-66-44**

США, Майами, Флорида: **+1(954)274-4435**

Время работы

Понедельник – Суббота: **9:00 - 21:00**
EDT

Воскресенье: **Закрето**

Адрес



Harbour Towne Marina, 850 NE 3rd St,
STE 213, Dania, FL 33004