

NO NAME 2003 120 TRI-DECK M/Y — INTERMARINE



Судостроитель: INTERMARINE

Год постройки: 2002

Модель: SHELBY

Цена: ЦЕНА ЯХТЫ ПО ЗАПРОСУ

Местонахождение: United States

Длина общая: 120' 0" (36.58m)

Ширина: 25' 0" (7.62m)

Макс. осадка: 6' 5" (1.96m)

Купить **No Name 2003 120 Tri-Deck M/Y — INTERMARINE** а также выбрать подходящую вам яхту из нашего каталога яхт вам поможет опытный яхтенный брокер Андрей Шестаков. На сегодняшний день компания **Shestakov Yacht Sales Inc.** имеет большое количество яхт в собственном списке продаж, а также тесно сотрудничает со всеми крупными яхтенными производителями по всему миру.

Для того чтобы купить яхту **No Name 2003 120 Tri-Deck M/Y — INTERMARINE** а также проконсультироваться по любому вопросу связанному с покупкой, продажей, чартером яхт позвоните по телефону **+7(918)465-66-44**.

ОГЛАВЛЕНИЕ

ОГЛАВЛЕНИЕ	2
ХАРАКТЕРИСТИКИ	3
Обзор	3
Основная информация	3
Размеры	3
Скорость, вместимость и масса	3
Размещение	4
Корпус и палуба	4
Информация о двигателе	4
ПОДРОБНОЕ ОПИСАНИЕ	5
Walkthrough	5
Equipment	8
Исключения	17
Отказ от ответственности	17
ФОТОГРАФИИ	18
CHOSEN ONE Outboard Profile Exterior Arrangement	21
КОНТАКТЫ	22
Контактная информация	22
Телефоны	22
Время работы	22
Адрес	22

ХАРАКТЕРИСТИКИ

Обзор

2002 120' Tri-Deck M/Y Intermarine

New to the Market!

She is a unique opportunity to own a classic quality, American built, true tri-deck motor yacht at an outstanding value. With design by the world-renowned firm of Luis De Basto and built in the Intermarine Shipyard in Savannah, GA, in 2002, this yacht offers tremendous space, amenities, and accommodations packaged into a tasteful contemporary yet classic tri-deck design.

This yacht completed the painting of the entire deckhouse and superstructure in 2013 (the hull was painted in 2012), extensive servicing of the air conditioning system, routine generator servicing, and the application of a fresh coat of bottom paint.

All in all, she is a spectacular yacht, fully appointed, she represents one of the best all-around values available on the market for a true tri-deck motor yacht of her size and class. Laid out superbly well for either private ownership or charter, Your dream destinations await aboard!

Основная информация

Тип судна: SHELBY

Подкатегория: Tri-Deck

Модельный год: 2003

Год постройки: 2002

Страна: United States

Размеры

Длина общая: 120' 0" (36.58m)

Ширина: 25' 0" (7.62m)

Макс. осадка: 6' 5" (1.96m)

Скорость, вместимость и масса

Вместимость воды: 730 Gallons

Объем топливного бака: 7133 Gallons

Размещение

Всего кают: 4

Всего ком. состава: 6

Каюты экипажа: 3

Комм. состав экипажа: 3

Корпус и палуба

Материал корпуса: Fiberglass

Информация о двигателе

Двигатели: 2

Производитель: MTU

Модель: 16V2000

Тип двигателя: Inboard

Тип топлива: Diesel

ПОДРОБНОЕ ОПИСАНИЕ

Walkthrough

She exhibits that indefinable combination of contemporary design, quality materials, and inviting comfort. Current yet classic, the interior finishes are a combination of rich leathers, honey-colored wood cabinetry, and paneling accented with contrasting darker-toned trims, granite, travertine, and marble counters and vanities, cream-colored Berber carpets, and bamboo flooring all of which give the interior an open and airy feel.

The elegant and understated furniture and upholstery fabrics impart a timeless and tasteful yet homey and comfortably inviting sense of tranquility and practicality. The contemporary art accent pieces complete the sense of grandeur and elegance aboard.

Aft Deck

Commencing on the teak soled main aft deck is a large alfresco dining and entertaining area perfect for daytime or evening lounging and dining. Split Corian tables, teak deck chairs, and a full-beam settee allow for large dinner parties in space and comfort. To starboard is a Sub Zero refrigerator and GE Monogram icemaker. There is stereo sound on this deck. On the starboard aft quarters, there are stainless steel gates. To starboard, is a curved teak stairwell leading down to the swim platform, and to port is the bay for the telescoping passerelle. The entire aft deck area is shaded during the day by a removable canvas canopy and well lit at night for evening entertaining. Tailing windlasses in the stern corners facilitate line handling when docking.

Main Salon

Entering forward through the double sliding stainless steel and glass doors one enters the main salon tastefully appointed with upholstered leather settees to port and individual leather occasional chairs to starboard. A 50" flatscreen TV in a pop-up cabinet is to starboard and the dark, satin-finished wood dining table for eight, surrounded by comfortable contemporary leather upholstered dining chairs, is located centerline forward and just aft of the grand spiral staircase that serves to connect the three main decks. Just forward of the staircase is a connecting marble inlaid walkway linking the galley and the main entrance foyer. On the forward bulkhead is a large decorative mirror reflecting the entire salon area. Large picture windows with Roman shades, additional storage cabinetry, dark wood soffits, accent lighting sconces, and cream color Berber carpet, wall coverings, and headliners accented with several contemporary works of art complete the impressive presentation of this area.

Galley

Continuing forward from the salon to port is the large, professionally equipped galley with a full complement of appliances and refrigeration coupled with generous storage and counter space to allow the chef to prepare the daily menu for the owners and their guests. Two full ovens, microwave, large side by side refrigerator/freezer, four-burner ceramic top stove, two stainless

steel sinks, dishwasher, and wine cooler put all the tools for world-class meals in the chef's hands. The casual center island with three stools invites a quick sit down snack or cup of morning coffee. All the way forward are two staircases leading, both, down to the forward crew area and up to the pilothouse and sky lounge.

Starboard Entrance Foyer

Starboard from the main salon going forward, is the marble inlaid, grand entrance foyer for the vessel as well as the main deck day head outboard and a service door inboard leading to the galley area to allow for easy and unobtrusive movement on the part of the crew as they go about their daily housekeeping tasks. This companionway terminates at the entrance to the master stateroom suite.

Main Deck Master Stateroom Suite

The master suite is the owner's oasis while aboard. From the king-size bed to the large flat screen entertainment center, private work desk, relaxing settee, walk-in closet, copious drawer storage, and locker space, and featuring an opposing his and hers bathroom/walk-in shower arrangement, the master suite is the ultimate island of privacy. Large windows both port and starboard allow for a private viewing of the outside scenery.

Guest Accommodations

Meanwhile, back in the main salon the grand spiral staircase of brushed stainless steel floating and floating steps connects the three main decks and allows access to both the lower deck guest accommodations and the spectacular sky lounge area. Let's first go below to visit the substantial and comfortable guest accommodations.

At the base of the staircase, landing is the main lower companionway allowing access to the various guest cabins. This area features generous storage to facilitate crew servicing of these quarters. All the way forward is the VIP stateroom with a spacious athwartships queen berth, vanity desk/dresser and chair, private head and shower, drawer storage, and hanging locker with a large flat-screen TV for entertainment.

Just aft to port and starboard are two mirror-image guest staterooms with full double beds and custom Pullman berths that tuck away in the inboard bulkheads. Each stateroom is equipped with a private full bath, drawer, and hanging locker storage space.

Sky Lounge & Bridge Deck

Now, back up the grand staircase all the way to the sky lounge, we're about to visit one of the most visually exciting areas of the yacht. It's the huge sky lounge featuring a panoramic view through eight large picture windows of the ocean or whatever another paradise you happen to be visiting at the moment. The wainscot paneling in this room is honey-colored wood with darker accent inlays and the panels above to the ceiling are complementary fabric. The headliner is a combination of upholstered panels and dark wood accent strips. On the starboard side forward is a large black leather seating/lounging area and aft is a full granite-topped bar with stools. The bar

features liquor storage, sink, GE Profile icemaker, and Sub Zero refrigerator. Other appointments in the sky lounge are a round gaming table and 4 chairs and a huge L-shaped settee, coffee table, and occasional chairs with occasional tables to port. On the starboard side is a large flat-screen TV/entertainment center. The whole sky lounge area has its own separate stereo sound system. The colors are all creams, earth tones, and neutral fabrics. Forward to port is the entrance door for the practical and very nicely appointed sky lounge day head.

Continuing aft out of the sliding stainless steel and glass sliding doors is the teak soled deck aft area. On this deck is a 4-5 person Jacuzzi tub aft on centerline with large seating and lounging areas on both sides. To Starboard is a Corian topped wet bar with Sub Zero refrigerator/sink, and storage. There is additional storage under the seating area and the entire aft deck is surrounded by a stainless safety railing. On the port side is a spiral, teak treaded stairwell that leads down to the main deck and up to the flybridge deck.

Raised Pilot House/Command Bridge Area

Forward of the sky lounge is the raised pilothouse/command bridge with a panoramic view of the ocean ahead. Well laid out with a very comprehensive electronics/Navionics package, the area has great visibility and practical ergonomics. There is an aft bench seat, a chart table, and a desk. The ship's systems monitors are located in this area.

Aft of the helm area to port is the captains en suite stateroom with double bed. The stateroom is fully finished with fabric wall coverings and satin-finished wood paneling with accent inlays. There are two hanging lockers and generous drawer storage, and a fully appointed private head with a separate shower. This cabin can also double as an additional guest stateroom in the event of overflow guests.

Portuguese Bridge, Foredeck, and Side Decks

Also at the helm deck area, there are port and starboard access doors to the side decks, wing stations, and the Portuguese bridge. Staircases on both sides of the bridge deckhouse lead down to the main side decks that allow easy access to the lower main deckhouse and aft deck. Alternatively, moving forward on the Portuguese bridge we come to the centerline staircase with stainless steel grab rails that leads down to the foredeck lounge area. Here we find mirror image port and starboard settees with tables and storage for sunning and dining. The crew's escape hatch, anchor chain locker, and two Muir windlasses for the main anchors are all mounted on the foredeck.

Crew Spaces

There are two different crew areas aboard (three if you count the bridge deck captain's cabin). The first is located on the lower deck and is accessed by a staircase forward of the galley on the main deck. The forward crew area offers very livable and comfortable accommodations for up to four members in two mirror-image staterooms up in the forepeak area. These two staterooms both contain upper and lower bunk berths and separate private heads and showers.

Aft of the cabins is the crew lounge with a u-shaped dinette/settee and table, flat-screen TV and stereo, sink, storage cabinets, and storage refrigerators. Also contained in this area are the washer and dryer laundry units. There is also a service companionway that allows crew access to the lower guest quarters for convenient housekeeping.

A second crew area is located on the lower deck level in the aft section of the yacht. This area is accessed either through a door on the starboard side of the main aft deck leading to a staircase down to the machinery spaces and this crew area or through an access door in the transom entered from the swim platform. The crew cabins consist of two mirror-image cabins with single berths, generous storage, and separate heads and showers. Moving forward down the corridor formed by these two cabins are large storage lockers ideal for stowing dive gear or smaller recreational water toys conveniently. At the forward end of the corridor, space opens up to the electrical room and engineer's space containing the main ship's electrical distribution panels and functional workspace for the technical members of the crew. In this area is the landing of the staircase from the aft deck entrance.

Engine Room

All the way forward in this area is the watertight bulkhead door accessing the main engine room of the vessel containing the massive 1800 HP MTU 16V-2000 diesel-powered main engines and the two 65 KW Northern Lights generators, watermaker, chilled water air conditioning units, and most of the other critical equipment involved in moving her to all the dream destinations you desire to go to.

The final area of the Vessel to review is the:

Flybridge Boat Deck

This area is accessed from the staircase on the sky lounge aft deck and contains the major water toys. These include the 14' Novurania rigid inflatable tender, two jet bikes, two sea kayaks, and a 2000 lb. hydraulic lift and rotation davit for lifting them into position for fun. Also on this deck are the two canister pack emergency 10 man life rafts mounted for rapid deployment, and a huge forward upholstered sun pad area complete with service bar cabinet and a large Bimini top to protect on those tropical sunny days. In the center of this deck are the yacht's main radar and communications mast serving as a reminder that she is capable of going anywhere her owner desires with the capability to stay in touch with the outside world once on the station.

Equipment

MACHINERY

ENGINES: 2 x MTU 16V2000, 1,800 hp

HOURS: Port: 4,600 hrs

Stbd: 4,600 hrs

PROPULSION: Straight shafts & propellers

TRANSMISSIONS: Twin Disc DD 6619 SC marine reduction gears w/trolling valves

STEERING: Kobelt electro-hydraulic steering system

CONTROLS: Detroit Diesel single-lever electronic

STABILIZERS: Naiad Roll Stabilizers

GENERATORS: (2) Northern Lights 65 kW diesel

HOURS: Stbd: 19,500 hrs
Port: 11,700 hrs

AIR CONDITIONING: Aqua Air 4 x 5 Ton Water Chilled A/C units

OTHER MACHINERY:

- Naiad 20 SHT bow thruster
- Bauer dive compressor
- Alpha Laval fuel purification system
- Sea Spring Dolphin Series 1600 GPD Watermaker

MAIN AFT DECK

- U-Line Icemaker
- Sub-Zero Refrigerator
- Outdoor sound system w. 4 6"x4" speakers
- Jenn-Air Outdoor BBQ Grill
- Sink
- Twin Corian dining tables and seating
- MAIN SALON
- Wood blinds & Roman shades window treatments
- 50 "flat screen TV on hideaway hi-lo lift in entertainment cabinet to starboard
- Logitech Entertainment Remote Control System
- Yamaha RX-V667 Natural Sound AV Receiver
- Sony Blu-Ray DVD player
- Storage cabinets
- Wall sconces
- Dining table for up to 10 people with 8 dining chairs

- 3 Occasional chairs
- Coffee table
- Leather settee
- Wood wall paneling, and soffits, padded upholstered wall and headliner panels
- Halogen downlighting
- Berber carpeting and inlaid marble floors
- Large decorative mirror in the entry alcove

MAIN DECK DAY HEAD

- Marble floors
- Headhunter Royal Flush quiet head
- Granite vanity countertop w. wood cabinet
- Custom wall and overhead treatments

MASTER STATEROOM

- Flat-screen TV
- King-size Berth
- Berber carpet
- Wood wall paneling and cabinetry, upholstered wall and headliner panels, Roman shades and wood blinds window treatments, settee, work desk/vanity to starboard access to his/her master baths
- Master Bath features a large walk-in shower on centerline accessed by mirror image glass door entrances from each separate head compartment to port and starboard. The floors and vanity tops are marble with porcelain sinks and brushed nickel fixtures.
- GUEST ACCOMMODATIONS LOWER DECK
- VIP STATEROOM
- Athwart ships queen berth
- Curtains, Berber carpet, wood cabinets, upholstered wall and headliner panels, vanity desk, hanging lockers, seat, halogen downlighting.
- VIP Head features a marble finished walk-in shower. The floors and vanity tops are marble with porcelain sinks and brushed nickel fixtures.
- A flat-screen TV and separate stereo

GUEST STATEROOMS

- Two mirror-image guest cabins each feature double beds inboard with additional Pullman berth above, Curtains, Berber carpet, wood cabinets, upholstered wall, and headliner panels
- Flat-screen TV and Stereo in each
- The heads each have full showers, vanities, and storage cabinets

BRIDGE DECK AFT AREA

- 4-5 person Jacuzzi hot tub on Sky Lounge aft deck
- Sun pad lounging area aft
- Aft canopy shade over the lounge area
- Service refrigerator/wet bar cabinet with Corian top

BRIDGE DECK SKY LOUNGE

- Sky Lounge bar with two-level stone top with top mount sink, faucet and drain fitting with ice maker
- and refrigerator and stone floor behind the bar
- Entertainment cabinet
- Storage cabinets port/starboard
- Berber carpet
- Upholstered wall panels with wood-paneled satin finish wainscot
- Padded headliner panels with satin finish wood trim panels
- Window treatment - wooden blinds
- Decorative sconces
- Recessed halogen downlights and directional lights
- Telephone jack

SKY LOUNGE DAY HEAD

- Satin finish wood vanity cabinet
- Stone vanity top with under-mount satin nickel sink, faucet, and drain fitting, decorative mirror,
- stone floor wood-paneled walls with dark wood accent bands
- Gold leaf faux painted headliner panels, marine toilet, hand towel ring, tissue holder, and soap
- holder

CAPTAIN'S CABIN

- Located on the Bridge Deck
- Full-size bed with storage below, padded headboard, Satin finish wood nightstand, two cedar
- lined closets with shelves, carpet, padded headliner panels
- Satin finish wood paneled wainscot with padded upholstered panels above.

- Wooden blinds window treatments, recessed halogen downlights
- Entertainment center includes: 22"Plasma TV
- Sony CD/tuner combo
- 4 Alpine speakers Sony A65A Receiver
- Telephone jack
- Captain's Head contains: Satin finish wood vanity cabinet
- Corian vanity top with under-mount Corian sink, faucet, drain fitting, medicine cabinet, mirror
- and wallpaper
- Painted, painted headliner panels, vinyl floor covering
- Shower stall with Corian floor and walls and glass door, shower set and handles, marine toilet, full
- size Towel bars, tissue holder
- Recessed halogen downlights

COMMUNICATIONS, ELECTRONICS AND BRIDGE DECK NAVIGATIONAL EQUIPMENT

- Panasonic KX-TD1232-3 Control Unit Telephone System Panasonic KX-T7230 LCD Speaker Phones x 2
- Panasonic KX-T7220 Speakerphone x 18
- Panasonic KX-T7885 cordless digital 900 MHz phones x 3 Panasonic passarelle/gate speakerphone
- Shorelines x2 - 1 voice and fax - 1 voice only - Includes Hubbell shore cord Cell lines x 2 - both
- voice and fax capable
- Sat lines x 2 - 1 voice - 1 fax
- Furuno 25 kW 6.5' open array antennae FR 2125 BB 120 mile Furuno Black Box Colour Radar
- Furuno 25 KW 6.5' open array antenna FR2125-BB 120 Mile Furuno 12 KW 6.5' open array antenna
- FR2115-BB 96 Mile Gyro Interface Boards x 2
- NorthStar 941XD-DGPS w/loop antenna and differential x 2 AMD Tbird 900/256 RAM
- Nobeltec Visual Nav Software
- Interface with GPS, WESAT (weather sat in SeaTel)
- Tides and Currents Software & BSB CD ROM Chart Options
- Furuno FCV-120OBB Black Box Video Sounder
- Furuno 200B-12H bronze through-hull transducer
- Furuno ST-02MSB through-hull temp sensor
- HS-2000 Starter Pack
- B & G Speed, Log, Depth, Temp
- Wind PCB for HS-921 CPU Full Function Digital Display
- Anschutz GyroStar II & Anschutz Pilotstar D

LOWER CREW QUARTERS

- Aft Crew Cabins are mirror image port & starboard with a single full-size bed with storage below nightstand Cedar lined closet
- Carpet
- Padded headliner panels, wallpaper, recessed halogen downlights, telephone jack
- Sony A65A Receiver: 22" Flat Panel LCD in each cabin

Crew Head in each aft crew cabin with:

- Formica & wood-trimmed vanity
- Corian vanity top with under-mount Corian sink, faucet, drain fitting, mirror, wallpaper,
- painted headliner panels, vinyl floor covering
- Shower stall with Corian floor and walls, glass door, shower set and handles, marine toilet, full
- size towel bars, tissue holder.
- Recessed halogen downlights decorative wall sconce
- Forward Crew Cabins –
- Mirror image port & starboard upper/lower twin berths with storage below
- Cedar lined closets
- Carpet
- Padded headliner panels with custom wall coverings
- Recessed halogen downlights
- Reading lights
- Telephone jack
- Head in each forward crew cabin with:
- Formica vanity with wood trim
- Corian vanity top with under-mount Corian sink, faucet, drain fitting, medicine cabinet, mirror
- and wallpaper
- Painted headliner panels, vinyl floor covering
- Shower stall with Corian floor and walls and glass door Shower set and handles, marine toilet, full
- size towel bars, tissue holder
- Recessed halogen downlights

Crew Lounge - Lower Deck Forward:

- A settee with Corian tabletop
- Kitchenette with sink, refrigerator, microwave, and trash compactor

GALLEY & LAUNDRY

- Two 30" GE Monogram conventional ovens
- Bosch Ecosense Dishwasher
- Wine cooler and refrigerator under portside counter
- Two Stainless Steel under-mount sinks
- Four burners GE Monogram ceramic top stove w. range hood
- Black granite countertops
- Generous storage and pantry space
- Microwave oven
- GE Profile refrigerator/freezer
- Trash compactor
- 220V 60 cycle separate Bosch Vision Series Washer and Dryer units (2 each) in the crew area
- Sub Zero storage refrigerator/freezer units in the lower crew area

ELECTRICAL SYSTEM AND SHORE POWER

- 208v AC, 60 Hz, 3 phase ship' service
- Atlas 50 KVA shore power converter
- Atlas Shore Power Smartbox System
- 2 x 75' - 100 amp, 208v AC, 3 phase shore cords
- Glendenning Cablemaster unit for each shore cord (2)
- Charles 40 amp 5000SP Series Battery Charger
- 4 x 8D Main engine starting batteries

MARINE SANITATION SYSTEM

- 12 Headhunter Royal Flush type 2 MSD toilets
- w. Headhunter Tidal Wave System

DECK EQUIPMENT

Foredeck:

- Polished stainless steel anchor pockets
- 2 x 400 pound, Poole N style anchors
- 2 x Muir VRC 6000 hydraulic anchor windlass with capstan each windlass equipped with a band brake 2 x Muir custom chain stoppers, anchor roller, and devil's claw assemblies

- 300' of 5/8" G-40 high test anchor chain per anchor

Additional:

- 6 x white Polyform F-11 fenders with black fender covers & 1/2" braid line
- 2 x Muir VC 4000 AC warping capstans on port and starboard stern corners
- 10 x leather-covered stainless steel fender holders with lamb's wool padding
- 1/4" x 100' heaving line with monkey's fist and leather bag
- 2 x telescoping boat hooks with brackets 2 x straphangers
- MarQuipt Telescopic 2500 lb. capacity Tenderlift davit w. fully hydraulic lift and rotation on the boat deck
- 14'4" Nautical Structures manual passerelle with teak decking
- MarQuipt Sea Stair with handrail and teak steps
- Stainless steel (316L) swim platform ladder
- Ship's Bell mounted on custom rails around anchor windlass
- Hoshizaki Ice maker in lazarette
- Bimini top over boat deck sun pad area

TENDERS & WATER TOYS ON BOAT DECK

- Novurania 15' RIB with 90 hp Yamaha 4-stroke engine
- Yamaha 2-person Waverunner
- 2 Two-person Kayaks

ENTERTAINMENT EQUIPMENT

- 42" Panasonic plasma TV and stereo sound system in Sky Lounge
- 50" Panasonic HD Gas Plasma TV on a built-in Hi-Lo lift in Salon
- Yamaha RXV 3300 Amplifier (150 watt x 5 channel / 2 zones) in Salon
- S 530 DVD/CD/MP3/VCR in Salon
- Sony A65 A FT Satellite receiver in Salon
- 4 x Boston VRI 580 ceiling mount speakers in Salon
- 1 x Boston VRI 553 center mount channel speaker in Salon
- 1 x PVC 1000 subwoofer in Salon
- Sharp flat screen television and stereo sound in the captain's cabin
- ADI multi-link in Salon
- Toshiba 20" TV in crew's quarters

SAFETY & FIRE EQUIPMENT

- (2) 10-person GIVENS canister packed life rafts with hydrostatic releases

- (18) Adult life jackets, type 1 & (4) Children life jackets, type 1
- (2) Pains-Wessex Ship Distress Kits in poly bottles
- (4) 30" Life rings with ACR buoy lights
- ACR RapidFix 406 EPIRB, Class I
- ACR SmartSART
- ABS Approved Fire Alarm System
- (25) Smoke detectors & (3) Thermal detectors
- the summary alarm on custom mimic in the pilothouse and displays CCTV Cameras mounted
- (20) 10# Dry chemical portable fire extinguishers
- (6) 15# CO2 Portable fire extinguishers
- Shipyard Period Refit Items Spring/Summer 2012

EXTERIOR

- The paintwork on the sundeck forward Engine room repainted
- Deck repairs, new bungs, caulking New paint, non-skid swim platform Cap rails refurbished
- Reconditioned props and steering gear Painting of hull sides

- Sundeck stereo in Jacuzzi hot tub area

INTERIOR:

- New microwave oven in crew quarters

- Alarm systems, 2x new monitors for wheelhouse
- USA receivers for A/V systems
- Cabinets in the engine room

Systems & Machinery Work Performed:

- Service on port & starboard generators
- Hydraulic systems maintenance
- Servicing of air conditioning system, air handlers, 4 x new compressors
- Flushing of piping: main engines, gen-sets, A/C, steering gear HE, stabilizers HE, shafts, thru
- hulls
- New black water pumps
- New shaft seals
- Shipyard Period Refit Items January 2014
- The entire deckhouse and vessel superstructure painted to match the 2012 hull paint job

- The entire exterior of the vessel has now been repainted
- Extensive servicing of chilled water air conditioning system
- A new coat of bottom paint was applied

EXCLUSIONS

- Owner's personal effects. List available upon request.

Исключения

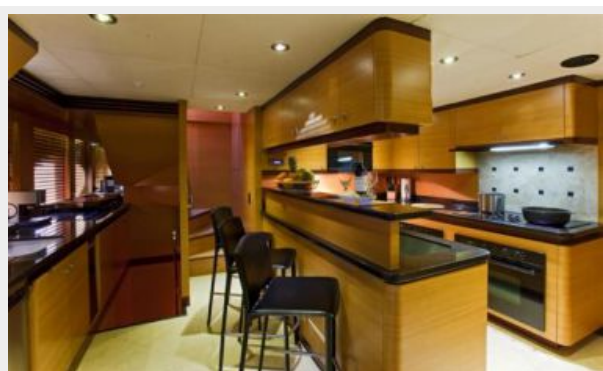
При продаже яхты исключаются личные вещи владельца.

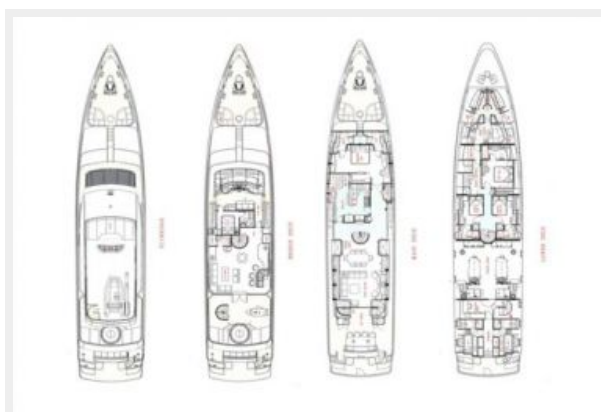
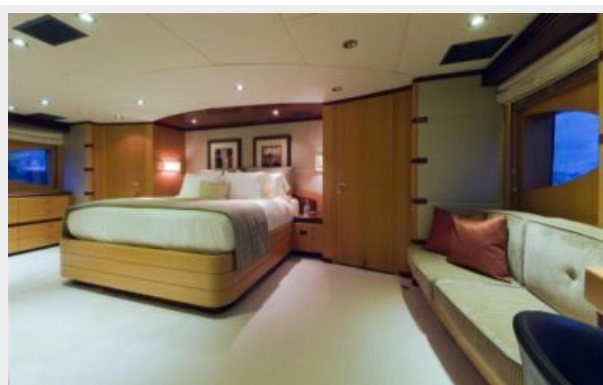
Отказ от ответственности

Компания предоставляет описание судна или яхты добросовестно, но не может гарантировать точность этой информации, а также не ручается за техническое состояние. Покупатель должен проинструктировать своих агентов или оценщиков исследовать представленную информацию более подробно, по собственному желанию. Продажа судна или яхты, изменение цены или снятие с продажи будет происходить без предварительного уведомления.

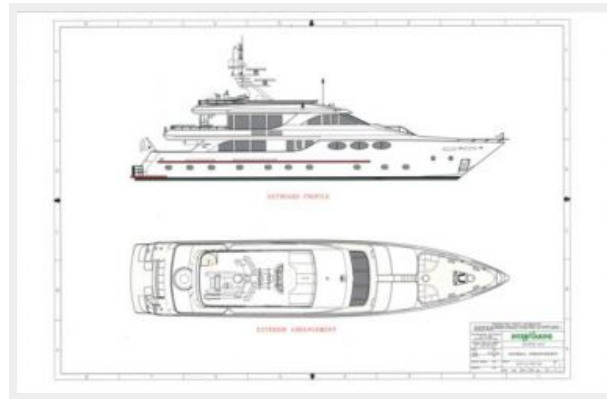
ФОТОГРАФИИ







CHOSEN ONE Outboard Profile Exterior Arrangement



КОНТАКТЫ

Андрей Шестаков (Andrey Shestakov) – ведущий яхтенный брокер отдела продаж яхт и судов компании Shestakov Yacht Sales Inc. Официальный представитель Shestakov Yacht Sales Inc. для русскоговорящих клиентов в центральном офисе компании в Майами/Форт Лодердейл/Флорида/США.

Контактная информация

Email: andrey@shestakovyachtsales.com

Web: shestakovyachtsales.com

Телефоны

Краснодарский край: **+7(918)465-66-44**

США, Майами, Флорида: **+1(954)274-4435**

Время работы

Понедельник – Суббота: **9:00 - 21:00**
EDT

Воскресенье: **Закрито**

Адрес



Harbour Towne Marina, 850 NE 3rd St,
STE 213, Dania, FL 33004