

DOLCE — WESTPORT



Builder: WESTPORT

Year Built: 2004

Model: Motor Yacht

Price: PRICE ON APPLICATION

Location: United States

LOA: 112' 0" (34.14m)

Beam: 23' 9" (7.24m)

Max Draft: 5' 6" (1.68m)

Cruise Speed: 21 Kts. (24 MPH)

Max Speed: 25 Kts. (29 MPH)

Our experienced yacht broker, Andrey Shestakov, will help you choose and buy a yacht that best suits your needs **DOLCE — WESTPORT** from our catalogue. Presently, at Shestakov Yacht Sales Inc., we have a wide variety of yachts available on our sale's list. We also work in close contact with all the big yacht manufacturers from all over the world.

If you would like to buy a yacht **DOLCE — WESTPORT** or would like help answering any questions concerning purchasing, selling or chartering a yacht, please call **+1(954)274-4435**

TABLE OF CONTENTS

TABLE OF CONTENTS	2
SPECIFICATIONS	6
Overview	6
Basic Information	6
Dimensions	6
Speed, Capacities and Weight	6
Accommodations	6
Hull and Deck Information	7
Engine Information	7
DETAILED INFORMATION	8
INTRODUCTION	8
HIGHLIGHTS AND CUSTOM FEATURES	8
AFT DECK	8
MAIN SALON	9
DAY HEAD	10
GALLEY	10
UTILITY ROOM	10
PILOTHOUSE	10
ELECTRONICS	11
MASTER STATEROOM	12
MASTER HEAD	12
MID GUEST FOYER	13
VIP STATEROOM / FORWARD	13
VIP HEAD	13
GUEST STATEROOM / PORT	13
GUEST HEAD	14
GUEST STATEROOM / STARBOARD	14
GUEST HEAD	14

CAPTAIN'S QUARTERS	15
CAPTAIN'S HEAD	15
CREW QUARTERS	15
CREW GALLEY	16
CREW LOUNGE	16
CREW HEAD	16
DOG HOUSE	16
FLYBRIDGE	17
FLYBRIDGE ELECTRONICS	17
BOAT DECK	18
FORE DECK	18
ELECTRICAL EQUIPMENT	18
ENGINE ROOM	19
TENDER AND JET SKIS	20
EXCLUSIONS	20
Exclusions	20
Disclaimer	20
PHOTOS	22
AFT DECK	22
AFT DECK	22
AFT DECK	22
SALON	22
SALON	22
SALON	22
SALON	23
SALON / LOOKING AFT	23
DAY HEAD	23
DINING	23
GALLEY / DINETTE	23

GALLEY	23
GALLEY	24
PILOTHOUSE	24
PILOTHOUSE	24
PILOTHOUSE	24
MASTER STATEROOM	24
MASTER STATEROOM	24
MASTER HEAD	25
MASTER STATEROOM	25
MASTER HEAD	25
MASTER HEAD	25
VIP STATEROOM / QUEEN BERTH POSITION	26
VIP STATEROOM / TWIN BERTH POSITION	26
VIP STATEROOM WITH EN-SUITE HEAD	26
GUEST STATEROOM / PORT	26
GUEST STATEROOM WITH EN-SUITE HEAD	26
GUEST STATEROOM / STARBOARD	26
LOWER FOYER	27
GUEST STATEROOM WITH EN-SUITE HEAD	27
UTILITY ROOM	27
CREW LOUNGE	27
CREW QUARTERS	28
FLYBRIDGE	28
FLYBRIDGE	28
FLYBRIDGE / HELM	28
BOAT DECK / HOT TUB	28
BOW	28
BOW	29
ENGINE ROOM	29

ENGINE ROOM	29
CONTACTS	30
Contact details	30
Telephones	30
Office hours	30
Address	30

SPECIFICATIONS

Overview

“DOLCE” features four Staterooms with en-suite Baths and Crew Quarters for 4 or 5 aft.

Basic Information

Category: Motor Yacht	Sub Category: Raised Pilothouse
Model Year: 2004	Year Built: 2004
Country: United States	Vessel Top: Hardtop
Fly Bridge: Yes	

Dimensions

LOA: 112' 0" (34.14m)	Beam: 23' 9" (7.24m)
Max Draft: 5' 6" (1.68m)	

Speed, Capacities and Weight

Cruise Speed: 21 Kts. (24 MPH)	Max Speed: 25 Kts. (29 MPH)
Water Capacity: 1025 Gallons	Holding Tank: 600 Gallons
Fuel Capacity: 5500 Gallons	

Accommodations

Total Cabins: 4	Sleeps: 8
Total Heads: 5	Crew Cabin: 3
Crew Berths: 5	

Hull and Deck Information

Hull Material: Fiberglass

Hull Configuration: Semi-Displacement

Hull Designer: JACK SARIN

Exterior Designer: WESTPORT

Engine Information

Engines: 2

Manufacturer: MTU

Model: 16V2000

Engine Type: Inboard

Fuel Type: Diesel

DETAILED INFORMATION

INTRODUCTION

“**DOLCE**” has to be one of the most highly upgraded 112’ Westport Motoryachts in her category! No expense has been spared to make this vessel truly turn-key for reliable cruising. Not only were her MTU Engines totally rebuilt, but also almost every system throughout the vessel has been replaced or upgraded. A beautiful custom interior décor has been created throughout this yacht and many functional upgrades make her very comfortable for extended cruising. Any serious 112’ Westport buyer should not miss inspecting this exceptional yacht!

HIGHLIGHTS AND CUSTOM FEATURES

- Twin MTU/DDC 16V2000 Engines @ 2000HP have been zero-houred as of 5/2011 by MTU Pacific Power. There are approx. 2080 hours since complete engine rebuild. The full 2000 hour MTU Service was completed by RPM Diesel. Full detailed engine rebuild documentation is available to serious prospective buyers
- New custom Cherry cabinetry in starboard aft corner of Salon, with 55” Samsung TV above. A drop down 42” LG TV provides an additional video source in the Salon for watching multiple games, etc.
- The VIP Stateroom features a custom centerline Queen berth, which is convertible to two single berths that split apart against the port and starboard gunwales (2015)
- All Salon Furniture replaced (2016)
- All Carpeting replaced throughout entire yacht (2015)
- All Exterior Cushions replaced (2016)
- Interior/Exterior Lighting converted to LED
- A/V Remotes in Salon, Galley, Aft Deck and Master Stateroom converted to Mini IPads
- Galley and Laundry Appliances replaced (2015-2020)
- All Air Conditioning Chillers replaced with new Titanium Chillers (Chiller #3-11/2016, Chiller 1 & 2-1/2018)
- (6) NEC Electronics Monitors in Pilothouse
- V2-16 Bow Thruster with Dual Prop (7/2017)
- Engine Exhaust Risers replaced (2017)
- NAIAD Stabilizer Actuators replaced (2017) along with new Stabilizer Fin Seals
- PTO (Power Take-off for Hydraulics 1/18)
- Atlas Power Converter – (fully-serviced 2020)

AFT DECK

- Teak Deck
- Port & starboard self-draining storage lockers

- Safety Child Gates on Stairwells to Swim Platform and on interior stairwells to Staterooms
- Aft Settee molded-in with cushions and cover (2016)
- Hi-Lo table with high-gloss Teak countertop, Dining for (8)
- (4) Matching Dining chairs with new cushions (2016)
- (1) 24" Ring Buoy with 50'x 3/8" line
- Built-in Samsung 40" TV (2020)
- Aft Deck Bar with (3) matching Teak stools and cushions, Corian countertop with sink, hot & cold water
- Ice maker (New 2020)
- Refrigerator (New 2020)
- Zoned Audio/Video through Main System on Mini iPad, Apple TV
- Aft Deck Overhang with recessed lights on dimmers
- Access stairwell to Boat Deck – Westport Spiral Staircase
- CCTV Camera 360 Degree Pan/Tilt/Zoom
- Safety stainless hand rails on Swim Platform port & starboard
- Down Riggers mount for "U" Rails on port side for with electrical connection
- (2) Rod Holders
- Custom drawers behind bar (2016)
- Custom 4-step Boat Ramp (2016)
- Teak Deck on Swim Platform replaced (2019)

MAIN SALON

- Full-width glass bulkhead separating Aft Deck and Main Salon with (2) glass sliding doors
- New custom Cherry cabinet in starboard aft corner with 55" Samsung TV, Apple TV
- Aft to port concealed wet bar with sink, liquor storage, U-Line refrigerator
- Port & starboard raised buffets for china, crystal and flatware storage
- Sofa facing starboard with designer glass top cocktail table
- Matching loveseat facing aft (2016)
- Matching end tables with lamps (2016)
- (2) Matching swivel occasional chairs facing forward, re-upholstered (2016)
- Entertainment Center: Sony 5-Disc DVD/CD Changer New Denon AM/FM Stereo and Surround Sound Receiver (2020), Apple TV, Air Play
- TV 42" LG LCD Flatscreen with vertical drop from ceiling
- Second Salon TV for watching multiple games, etc.
- Dining table with glass top and (8) matching chairs
- Large Salon windows with Roman shades, Valance and Silhouette blinds
- Ceiling perimeter Cherrywood crown molding with rope lighting
- Headliner with LED down lights on dimmers
- (2) Designer arm chairs – facing port (2016)
- Custom side table
- Custom carpet runners for Salon, Companionway to Galley & Pilothouse to Flybridge

DAY HEAD

- New Wall coverings (2019)
- Mirror overhead
- Vanity light
- Marble vanity top with black Kohler Caxton under-mount sink
- Ceiling light fixture
- Headhunter Royal Flush Head

GALLEY

- Built-in U-shape 8-person Dining Settee with granite countertop table
- Stainless steel sink with Garbage Disposal + new Kohler faucet (2017)
- Wolf 5-Burner Cooktop Stove
- Frigidaire Gallery Stainless steel Convection Microwave with Exhaust Fan (2016)
- Frigidaire Stainless steel Convection Oven (2020)
- Kitchen Aid Stainless steel Dishwasher
- 48" Kitchen Aid Stainless steel double door Refrigerator/Freezer with Icemaker (2017)
- Overhead Cherry wood perimeter Soffit crown molding with rope lighting
- Breakfast counter with (2) custom chairs
- Ample over and undercounter storage lockers
- LG LCD Flatscreen TV and Apple TV
- Teak & Holly Flooring with marble starboard walkway
- Child/Dog gate to VIP stateroom
- Soap dispenser

UTILITY ROOM

- 6'7" Headroom
- Under counter Sub-Zero Refrigerator
- New Wine Cooler (2020)
- Samsung Washer – front loader – (2016)
- Samsung Dryer – front loader – (2016)
- Built-in locker with (4) drawers/shelves
- New Headliner (2019)

PILOTHOUSE

- Majilite Headliner
- Upholstery on Pilothouse seating (2016)
- Centerline Helm Station with 24" stainless steel Destroyer Wheel

- Engine Controls Electronic DDC/MTU
- Aft bulkhead smoked mirror with art work
- Built-in Settee with Cherrywood table
- STIDD Helm chair with footrest
- Custom enlarged Captain's desk with drawer and seat
- Pioneer AM/FM with CD Player
- Satellite Phone – KVH TracPhone
- Intercom
- Polished Brass Weems & Plath Ship's Clock & Barometer
- Overhead bookshelf
- Port side built-in Settee
- Carpet runners

ELECTRONICS

- New Furuno Radar FAR-2117 X-Band Radar 96NM range (2019)
- 2nd Furuno Radar 96 Mile with ARPA
- (6) NEC AS-193 Electronics Monitors
- Garmin 741 GPS/MAP
- (2) VHF/ICOM ICM602
- SeaTel 24
- Nobeltec with Computer Integrated with Autopilot
- Autopilot/Simrad AP20
- Garmin GPS/MAP
- Garmin GMI-10 Wind/Speed/Direction
- Color Sounder Furuno FCV-1200 L
- 6" Ritchie Magnetic Compass
- CCTV With port & starboard side decks Cameras on new NEC Monitors
- Engine Cameras with Pan/Tilt/Zoom
- (3) Exalto variable Speed Windshield Wipers with Wash
- Searchlight ACR/URP-102
- Furuno GPS – Navigator GP-37
- Pilothouse Windshield Defrosters
- Generator Remote Starts
- (VIC) Vessel Information System on new NEC monitors – fully updated & serviced (2017)
- (8) Auto Bilge Pumps
- (14) Heat Sensors, (13) Smoke Alarms and (4) CO Alarms
- Voltage Monitor Shore and Generators
- Tank Level Monitor
- (3) Fuel Tanks
- (2) Fresh Water Tanks
- Flybridge Grill lid closed Alarm
- (2) 24V Chart Lights

- Weather Fax Furuno 207 NX-700 Navtex
- Nobeltec Chart System with 18" LCD Flatscreen Monitor
- Stabilizers Naiad Multisea II
- Alarm at 75% + 98% levels
- Satellite Receivers on all TV's
- Satellite Radio

MASTER STATEROOM

- Centerline California King Berth with upgraded Tempur-Pedic mattress –berth covers & pillows (2016)
- Port & starboard nightstands with reading lamps
- Sofa with built-in end tables and lamps to port – fabric and pillows (2016)
- Large walk-in wardrobe cedar-lined with built-in wall safe & mirror on inside of wardrobe door
- 42" LG LCD Flatscreen TV wall-mounted on port aft bulkhead with Apple TV & Mini I-Pad A/V Remote (New 2018)
- Surround Sound and Audio Sub-Woofer
- Upholstered headboard bronze mirrored bulkhead
- (2) Large cedar-lined drawers under berth
- Access to His and Hers Heads
- 15-Drawer dresser to starboard
- (4) Large opening portlights with screens and privacy covers
- Port & starboard Shoji screens with custom black-out shades
- Sony 5-Disc DVD Player
- Intercom/Phone

MASTER HEAD

- His & hers style with separating custom walk-in shower with full-body sprayers
- Added custom stainless steel handrails in shower
- Bronze mirrored forward bulkhead with lighted make-up mirrors and stools
- Built-in clothes hamper
- Port & starboard opening portlights
- Marble seats
- Marble countertops
- Kohler sinks with Jado silver & gold fixtures, forward mirrored bulkhead
- Sliding mirrored medicine cabinet
- Direct & indirect lighting
- Headhunter Freshwater Heads

MID GUEST FOYER

- Built-in Cherrywood Console with marble insert and storage below
- Overhead Lighting
- Stairwell Lifts for storage and luggage
- Marble flooring with custom inlay design

VIP STATEROOM / FORWARD

- Custom centerline walk-around Queen Berth, which is convertible to (2) single berths that split apart against port and starboard gunwales
- Upholstered Headboard
- Indirect lighting
- Cedar-lined walk-in wardrobe with full-length mirror on door
- Single drawer below berth
- Forward bronze mirrored bulkhead
- Port & starboard reading lamps
- Port & starboard built-in Cherrywood bookshelves
- Built-in Settee to starboard
- Overhead Escape Hatch 24" with Shoji screen and Cherrywood trim incorporated into overhead Cherrywood Soffit
- Port & starboard fixed Shoji Screens with back lighting
- Built-in Entertainment Center with Cherrywood doors and (4) drawers below
- Toshiba 23" LCD Flatscreen TV with remote
- Sony DVD/CD Player & Sony AM/FM Stereo Receiver with dual Speakers
- Intercom/Phone

VIP HEAD

- En-suite Head with marble countertops
- Vanity with Bates & Bates sink with silver and gold Jado fixtures
- Molded-in shower with tempered glass door
- Framed beveled edge mirror
- Under counter storage and linen storage
- Headhunter Freshwater Head
- Marble flooring

GUEST STATEROOM / PORT

- Queen Berth with upgraded custom Tempur-Pedic style mattress – berth covers & pillows
- Upholstered bulkhead with bronze mirror

- (4) Drawers under berth
- (2) Opening portlights with screens and privacy shades
- Shoji Screens with black-out shades
- Port & starboard nightstands with swing-out reading lamps
- To port built-in 6-drawer dresser
- Built-in Entertainment Center with new 23" Toshiba LCD Flatscreen TV with remote
- Sony DVD/CD Player
- Sony AM/FM Receiver with dual speakers
- Cherry doors and 5-drawer dresser below Entertainment Center
- Cedar-lined wardrobe with full-length mirror
- Intercom/Phone
- Direct and indirect Lighting
- Cherrywood overhead perimeter Soffit with Lighting

GUEST HEAD

- En-suite with marble countertops
- Kohler sink with gold and silver Jado fixtures
- Molded stall shower with clear tempered glass door
- Under counter storage
- Mirrored bulkhead
- Recessed lights
- Opening portlight with screen & Shoji Screen
- Marble floor
- Headhunter Freshwater Head

GUEST STATEROOM / STARBOARD

- Twin Berths separated by nightstand with 3 drawers and reading lamps
- Custom Tempur-Pedic-style mattresses with berth cover
- Fabric upholstered bulkhead with bronze mirrors
- Opening portlight screens & privacy shades and back lighting
- Built-in entertainment center with Cherry doors and (5) drawers below
- Sony AM/FM Stereo Receiver with dual Speakers / Sony DVD-CD
- 23" Toshiba LCD Flatscreen TV
- Cedar-lined wardrobe with full-length mirror
- Cherrywood Soffit with lighting
- Intercom/Phone

GUEST HEAD

- En-suite Head with marble countertops
- Kohler sink with gold and silver Jado fixtures
- Molded stall shower with clear tempered glass door
- Undercounter storage
- Mirrored above sink
- Recessed Lighting
- Cherry wood Soffit
- Headhunter Freshwater Head
- Opening portlight with screen and Shoji Screen

CAPTAIN'S QUARTERS

- Full-size Berth with new mattress (2018) and storage below
- Low-voltage 24C AC recessed room lights and 24V AC reading lights
- Wardrobe aromatic cedar-lined, with automatic light, double doors, stainless closet rod, cedar shelf with keeper and clear full-length mirror on inside
- Built-in nightstand
- Captain's desk with Corian top, includes stool
- Drawer under berth
- Dresser
- Bookcase
- 32" LG LCD Flatscreen TV

CAPTAIN'S HEAD

- Vanity and medicine cabinet
- Kohler sink with Grohe fixtures
- Wall mirror above vanity
- Custom-molded fiberglass shower with tempered glass doors and Grohe fixtures (sealed shower light)
- Low-voltage recessed room lights and vanity lighting
- Bath accessories: Ginger hardware; one each: soap dish, toilet paper holder, towel bar, tumbler holder, towel ring and robe hook
- Galley Maid toilet, freshwater plumbed and discharged to holding tank

CREW QUARTERS

- (3) Twin berths with mattresses (2015) and storage below, (2) berths in one room, (1) berth in a separate room
- Low-voltage 24C AC recessed room lights and 24V AC reading lights
- Wardrobe aromatic cedar-lined, with automatic light, double doors, stainless closet rod,

cedar shelf with keeper and clear full-length mirror on inside

- Drawers under berth

CREW GALLEY

- Lounge Galley upper and lower cabinets
- Built-in Sub-Zero 249RP Refrigerator
- Microwave Oven
- Upright, under counter GE Freezer
- Miele front loader Touchtronic washer and dryer

CREW LOUNGE

- Upholstered settee
- Samsung LCD Flatscreen TV
- Pioneer Stereo with (1) pair Speaker Craft CRS-One Speakers (AM/FM/CD)
- Cameo white Corian table

CREW HEAD

- Vanity and medicine cabinet
- Wall mirror above vanity
- Custom-molded fiberglass shower with tempered glass doors and Grohe fixtures (sealed shower light)
- Kohler sink with Grohe fixtures
- Low-voltage recessed room lights and vanity lighting
- Bath accessories: Ginger hardware; (1) each: soap dish, toilet paper holder, towel bar, tumbler holder, towel ring and robe hook
- Galley Maid toilet, freshwater plumbed and discharged to holding tank

DOG HOUSE

- 5' 7" Headroom
- Cellphone Tellular Digital
- Electronic Control Area

Satellite DSS Receivers (1) each in the following locations: (2015)

- Main Salon
- Galley + Pilothouse
- Aft Deck / Flybridge

- Master Stateroom
- VIP Stateroom
- Guest Stateroom / Port
- Guest Stateroom / Starboard
- Captain's cabin
- Crew cabin

FLYBRIDGE

- EZ2CY 3-Sided Enclosure
- Welded aluminum mast with Fiberglass Hardtop
- Centerline Helm Station with Full Instrumentation
- 24" Stainless steel Destroyer-style Wheel
- Port & starboard Wing Stations included fitted fiberglass, covers, Electronic Engine Controls with Synchronizer, Jog Lever, Bow Thruster Control, Rudder Angle Indicator, Main Engine Start and Stops
- Tinted Windshield with polished stainless steel frame
- STIDD Helm and Companion Seats with footrest and overs
- Wet Bar with sink, Corian countertop, TV and phone jack, hot & cold water, storage below
- U-line Refrigerator with Icemaker
- JennAir 30" Grill with stainless steel lid and auto shut-off switch, storage below
- (4) Pedestal Bar stools padded with covers and footrest – upholstery & cushions (2015)
- Clarion AM/FM Stereo with CD Player and (4) Speakers
- 24" Life Ring 50' x 38" line with ACR auto crew overboard marker light
- Starboard built-in bench seat with cushions, cover and storage below
- (2) Fixed oval cocktail tables with matching Corian tops
- Overhead lights in Hardtop on Dimmer Switch and 24V Courtesy Deck Lights
- Down three steps on centerline through polished stainless with clear Lexan centers child gates to Boat Deck

FLYBRIDGE ELECTRONICS

- Garmin GPS/MAP 7215 Plotter and Depth Sounder
- Garmin GMI-10
- VHF ICOM-IC M602 with Hailer
- Dual Rudder Angle Indicator
- Bow Thruster Control
- Jog Steering Control with Angle Indicator
- Helm Console cover
- Horns, Kahlenberg Triple Trumpet
- Autopilot/Simrad AP22
- Search Light ACR/UPR 102

BOAT DECK

- To port, molded in Hot Tub with (2015) sun pad, cover and storage below with control panel (2016)
- Added handrails at Hot Tub
- Freshwater wash-down
- Nautical Structures 2000 lb. Davit with Power Telescoping, Hydraulic Boom and Rotation with Independent Power Supply - Fully serviced (2017)
- 24" Life Ring with 50' x 3/8"
- G.P.I.R.B.
- (2) 8-Man Zodiac Life Rafts mounted on Boat Deck rails
- Side port Engine Room Exhaust
- Built-in "L-shaped" settee with cushions & cover to starboard - Cushions (2015)
- Oval Table fixed with matching Corian top & cover
- Starboard Air Intake for Engine Room with Delta T Demisters
- Polished stainless steel Euro-style rails around Boat Deck
- Access stairwell from Boat Deck to Aft Deck with polished stainless handrail & sliding safety hatch

FORE DECK

- Bow Sun Lounge with cushions and covers (2015)
- Deck Courtesy Lights
- Keyhole Seat with cushions and covers (2015)
- Stereo/Audio through Main A/V System
- Freshwater wash-down with Quick Disconnect
- Dual #4500 Maxwell Hydraulic Winches with PTO off of 65kW Genset – Fully serviced (7/2017)
- Dual Poole style 300 lb. galvanized Anchors (2) with 250' x 5/8"
- Polished stainless steel Euro-style Staple Bow Rails
- Polished stainless steel Bow Flagstaff
- Bow Bosun Locker
- Fiberglass non-skid Deck
- Freeman 24" access to Hatch to Chain Locker
- Chain with 350' x 5/8" chain and anchor chain freshwater

ELECTRICAL EQUIPMENT

- Atlas Power Converter – Fully serviced (2020)
- 12v/24v/110v/240v Single Phase
- (2) 100 Amp / 100' Electrical Cord Manual
- 65kW Northern Lights Genset with Sound Shield and double Hydro Elastic rubber mounts,

Exhaust Water Separator System – 2,910 hours since major overhaul & fully serviced (2020)

- 50kW Northern Lights 1200 RPM, Genset with Sound Shield on rubber Isolation mounts with Exhaust Water Separator System for maximum quietness, Water Separator Fuel Filter – Fully serviced (2020)
- (4) Battery Chargers (New 2019)
- Ships Main Electrical Panel in Crew Area with Main Generator
- Start/Stop Panels with Water Temp/Oil Pressures/Volt Meters
- 100 Amp Isolation Transformer with Boost
- Remote Start in Pilothouse
- All Engine, House & Tender Batteries replaced with AGM

ENGINE ROOM

- Twin MTU/DDC 16V2000 Engines with Air Seps/Block Heaters, 2000HP Zero-houred as of 5/2011
- Engines currently have 2080 hours and completed full 2000 hour MTU Service by RPM Diesel
- Gears/Twin Disc MG6598DC/3.031 Ratio
- New Main Engine Seawater Pumps (2020)
- Each Engine has Power Steering and Stabilizer Pumps
- Auto Change System with 110v Pump, Main Engines, Gears, both Gensets
- 60 Gallon Fresh Oil Tank / 50 gallon used Oil Tank
- 4" Aquamet 22 Shafts with Dripless Seals
- (2) Sea Recovery 1200 gallon per day Watermakers with optional Fresh Water Flush System – recently serviced. New Water Pump - reconditioned Membranes
- Stabilizers/Naiad model #353 System with 9 sq. ft. Fins – all (4) Actuators fully replaced (2017)
- Hot Water Heater 120 gallon Quick Recover 240v/208v
- DDEC Engine Starts and Displays
- Fuel Transfer Pump 110v with Timer and Meter
- Emergency Bilge System
- (2) 110V Bilge Pumps with Manifold System
- Auto Fuel Prime Pumps for Main Engines and Gensets
- Power Take Off 65kW Genset 1800 RPMs for Bow Thruster and Anchor System (New 2018)
- Air Conditioning (3) Chillers (Titanium) – (#3 Chiller-New 11/2016, #1&2 Chillers New 2018)
- Installed 2nd Thru Hull for back-up Air Condition Seawater Intake
- Raw Water Pump with Soft Start for Air Conditioning (12/2017)
- Air intakes from Boat Deck with Delta T Demister System with Manual Air Adjustment
- Engine Room Exhaust Blower System exist on Boat Deck
- Holding Tank/Black Water Tank 600 Gallon Fiberglass with Inspection, Hatch with 240v

Discharge Pump and 24v Back-up Power washed + cleaned (2017)

- Fire System FM200 Engine Room Auto/Manual and on Electrical Distribution Panel
- Fresh Water Flushes to Watermakers
- Pirelli Engine Room flooring
- Engine Exhaust Risers replaced (2017)
- All Headhunter Equipment serviced (2017)
- V2-16 Bow Thruster with stainless steel Dual Prop installed (New 2017)
- PTO Power take-off for Hydraulics (New 2018)
- Full-Service and Sanitization of entire HVAC Air Handler & Duct System

TENDER AND JET SKIS

- 2013 Zodiac Yachtline 420 Deluxe 14' Hard-bottom Inflatable with 60hp Yamaha 4-Cycle with Power Trim and Tilt – Hull # XDCY42446C313
- Center Console with Lexan Windshield and stainless steel grab rail
- Bilge Pump
- Covers
- Navigation Lights
- Stainless steel Bow Rail
- New Tender cover
- AM/FM Radio
- VHF Radio
- (2) Yamaha Wave Runners on Boat Deck

EXCLUSIONS

“**DOLCE**” is a registered name and does not convey. Exclusions to include, but not limited to owner's and crew's personal belongings, some artwork and some china.

A list of exclusions will be provided at the time of sale.

Exclusions

Owner's personal belongings.

Disclaimer

The Company offers the details of this vessel or yacht in good faith but cannot guarantee or warrant the accuracy of this information nor warrant the condition of the vessel. A buyer should instruct his representatives, agents, or his surveyors, to investigate such details as the buyer desires validated. This vessel or yacht is offered subject to prior sale, price change, or withdrawal

without notice.

PHOTOS

AFT DECK**AFT DECK****AFT DECK****SALON****SALON****SALON**

SALON**SALON / LOOKING AFT****DAY HEAD****DINING****GALLEY / DINETTE****GALLEY**

GALLEY



PILOTHOUSE



PILOTHOUSE



PILOTHOUSE



MASTER STATEROOM



MASTER STATEROOM



MASTER STATEROOM



MASTER HEAD



MASTER HEAD



MASTER HEAD



**VIP STATEROOM / QUEEN BERTH
POSITION**



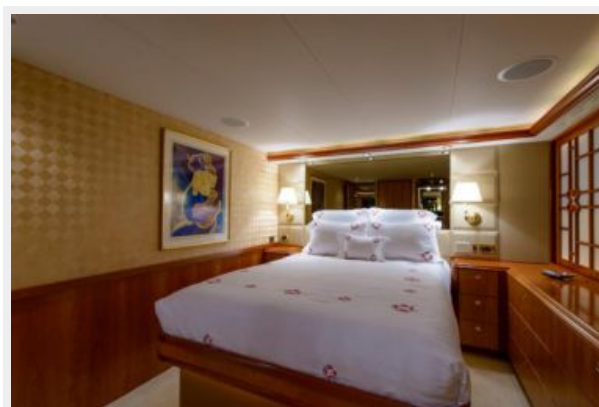
VIP STATEROOM / TWIN BERTH POSITION



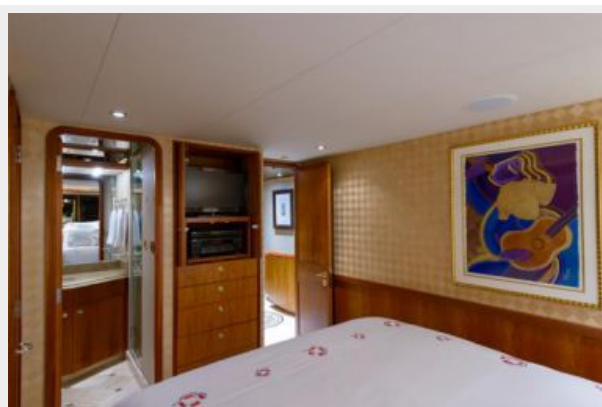
VIP STATEROOM WITH EN-SUITE HEAD



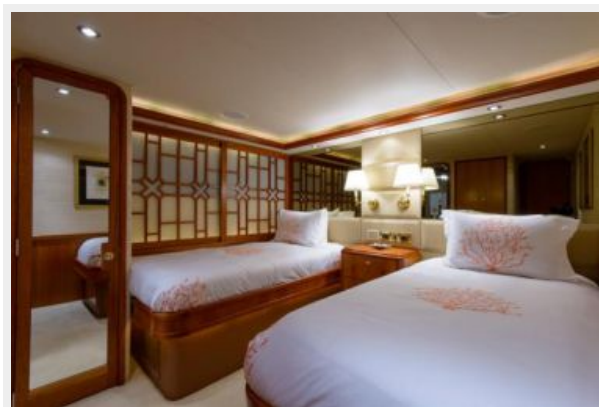
GUEST STATEROOM / PORT



**GUEST STATEROOM WITH EN-SUITE
HEAD**



GUEST STATEROOM / STARBOARD



GUEST STATEROOM WITH EN-SUITE HEAD



LOWER FOYER



UTILITY ROOM



CREW LOUNGE



CREW QUARTERS



FLYBRIDGE



FLYBRIDGE



FLYBRIDGE / HELM



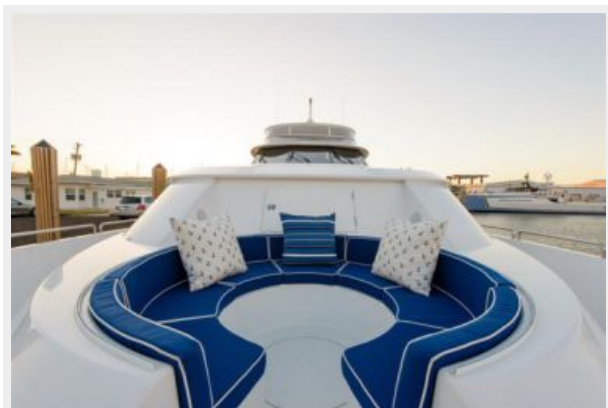
BOAT DECK / HOT TUB



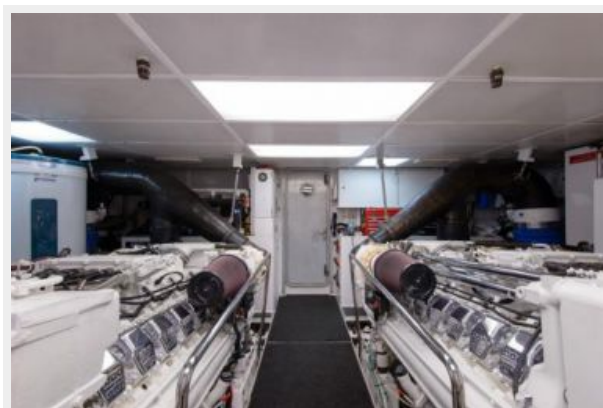
BOW



BOW



ENGINE ROOM



ENGINE ROOM



CONTACTS

Andrey Shestakov, leading yacht broker of the sales department of Shestakov Yacht Sales Inc. Shestakov Yacht Sales Inc., the official representative of the Miami/Fort Lauderdale FL headquarters.

Contact details

Email: **andrey@shestakovyachtsales.com**

Web: shestakovyachtsales.com/en/

Telephones

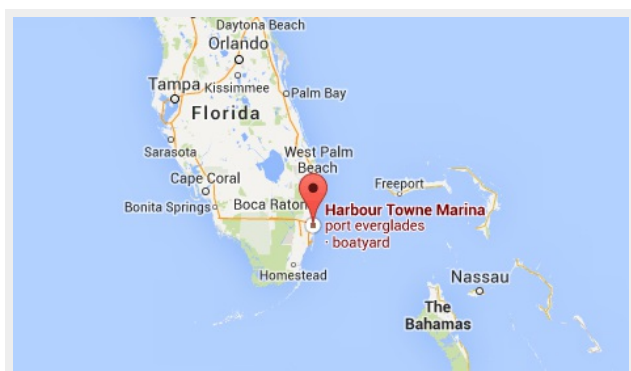
USA: **+1(954)274-4435**

Office hours

Monday – Saturday: **9:00 - 21:00 EDT**

Sunday: **closed**

Address



Harbour Towne Marina, 850 NE 3rd St,
STE 213, Dania, FL 33004