

VOO DOO — HYLAS



Судостроитель: HYLAS

Год постройки: 2010

Модель: Крейсерская яхта

Цена: **ЦЕНА ЯХТЫ ПО ЗАПРОСУ**

Местонахождение: United States

Длина общая: 70' 0" (21.34m)

Ширина: 18' 0" (5.49m)

Макс. осадка: 7' 9" (2.36m)

Крейс. скорость: 8 Kts. (9 MPH)

Макс. скорость: 10 Kts. (12 MPH)

Купить **VOO DOO — HYLAS** а также выбрать подходящую вам яхту из нашего каталога яхт вам поможет опытный яхтенный брокер Андрей Шестаков. На сегодняшний день компания **Shestakov Yacht Sales Inc.** имеет большое количество яхт в собственном списке продаж, а также тесно сотрудничает со всеми крупными яхтенными производителями по всему миру.

Для того чтобы купить яхту **VOO DOO — HYLAS** а также проконсультироваться по любому вопросу связанному с покупкой, продажей, чартером яхт позвоните по телефону **+7(918)465-66-44**.

ОГЛАВЛЕНИЕ

ОГЛАВЛЕНИЕ	2
ХАРАКТЕРИСТИКИ	5
Обзор	5
Основная информация	5
Размеры	5
Скорость, вместимость и масса	5
Размещение	6
Корпус и палуба	6
Информация о двигателе	6
ПОДРОБНОЕ ОПИСАНИЕ	7
INTRODUCTION	7
ACCOMMODATIONS	7
NAVIGATION EQUIPMENT	9
ENTERTAINMENT EQUIPMENT	9
ELECTRICAL SYSTEM	9
ENGINE/MECHANICAL EQUIPMENT	10
SAILS and RIGGING	10
HULL	11
DECK	11
COCKPIT	12
OTHER FEATURES	12
EXCLUSIONS	13
Исключения	13
Отказ от ответственности	13
ФОТОГРАФИИ	14
Bow View	14
Foredeck	14
Looking Forward	14

Deck Looking Aft	14
Cockpit	15
Dodger and Bimini	15
Cockpit Table	15
Cockpit Looking Aft	15
Looking Aft from Helm	15
Starboard Helm	15
Rig	16
Port Helm	16
Main Salon (Old Upholstery)	16
Aft Deck	16
Main Salon (New Upholstery)	16
Main Salon, Port Side	16
Main Salon, Starboard Side	17
Main Salon, TV Raised	17
Nav Station	17
Galley Looking Forward	17
Forward VIP Stateroom	17
Galley Looking Aft	17
VIP Head	18
Forward VIP Stateroom, Looking Aft	18
Foreard Guest Shower	18
Port Guest Stateroom	18
Port Guest Head	19
Crew Quarters/Guest Stateroom	19
Crew Quarters/Guest Head	19
Owner's Stateroom	19
Owner's Head	20
Owner's Stateroom, Stbd. Side	20

Owner's Shower	20
Engine Room Aft	20
Full Profile	21
Engine Room Fwd.	21
Under Sail	21
Layout	21
КОНТАКТЫ	22
Контактная информация	22
Телефоны	22
Время работы	22
Адрес	22

ХАРАКТЕРИСТИКИ

Обзор

VOO DOO is a fine example of the Frers-designed Hylas 70, current flagship of the popular and highly respected Hylas Yacht Series, built on a semi-custom basis to the highest standards. Fully automated push-button sail handling systems allow for easy shorthanded sailing, and her long list of additional options includes air, generator, bow thruster, water maker and an extensive package of navigation and entertainment electronics. Since her launch in 2012, VOO DOO has proven to be a fast, safe and extremely comfortable world cruiser with an excellent four-cabin layout, ideal for both private use (as done with current owner) or charter. Inspections are highly recommended.

Основная информация

Тип судна: Крейсерская яхта

Подкатегория: Sloop

Модельный год: 2010

Год постройки: 2010

Страна: United States

Регистрационный номер: 70861

Верх: Dodger

Размеры

Длина общая: 70' 0" (21.34m)

Длина по ватерлинии: 61' 7" (18.77m)

Длина палубы: 69' 7" (21.21m)

Ширина: 18' 0" (5.49m)

Макс. осадка: 7' 9" (2.36m)

Скорость, вместимость и масса

Крейс. скорость: 8 Kts. (9 MPH)

Макс. скорость: 10 Kts. (12 MPH)

Водоизмещение: 84175 Pounds

Вместимость воды: 400 Gallons

Вместимость сточного бака: 135 Gallons **Объем топливного бака:** 700 Gallons

Размещение

Всего кают: 4

Всего коек: 5

Спальные места: 8

Всего ком. состава: 4

Корпус и палуба

Материал корпуса: Fiberglass

Цвет корпуса: White

Отделка корпуса: Stainless Steel

Дизайнер корпуса: German Frers

Информация о двигателе

Двигатели: 1

Производитель: Yanmar

Модель: 6BY-260

Тип двигателя: Inboard

Тип топлива: Diesel

ПОДРОБНОЕ ОПИСАНИЕ

INTRODUCTION

VOO DOO is a fine example of the Frers-designed Hylas 70, current flagship of the popular and highly respected Hylas Yacht Series, built on a semi-custom basis to the highest standards. Fully automated push-button sail handling systems allow for easy shorthanded sailing, and her long list of additional options includes air, generator, bow thruster, water maker and an extensive package of navigation and entertainment electronics. Since her launch in 2012, VOO DOO has proven to be a fast, safe and extremely comfortable world cruiser with an excellent four-cabin layout, ideal for both private use (as done with current owner) or charter. Inspections are highly recommended.

ACCOMMODATIONS

VOO DOO features the standard four-cabin layout with three ensuite owner/guest cabins, plus an additional ensuite crew/guest cabin.

Finely crafted solid teak joinerwork is finished to a high level throughout the interior, including solid teak raised-panel cabin doors, fully louvered or latticed cabinet doors, double grooved fiddles and burlled table tops. Cabin soles are satin finished teak with custom locking mechanisms and fitted carpets. Head and shower areas are all painted white Awlgrip and feature Corian vanity tops, solid Corian sinks and molded floors. Hanging lockers are lined with cedar and feature automatic lights. White fabric headliner with Oceanair hatch screens/blinds throughout. Upholstery is custom leather, with tasteful bedding, towels and other décor throughout.

FORWARD GUEST STATEROOM:

Beginning forward is a private VIP stateroom with a king-sized berth, settee and significant storage space, including a large hanging locker, drawers and several cabinets. There are two hull windows and a large deck hatch. An ensuite head is forward, along with a shower stall shared with the port guest cabin.

PORT GUEST STATEROOM:

Forward of the main salon and to port is the second guest cabin, featuring a generous double berth, hanging locker and multiple drawers and lockers. There are three opening portholes and a large deck hatch. A head and shower stall is across the passageway.

MAIN SALON:

VOO DOO's main salon is quite spacious for a vessel of this size, due in part to her generous 18' beam. A large L-settee is to port, with a beautiful burlled table that expands as needed to

accommodate six comfortably, and can be raised or lowered by a manual lift. Two custom seats are inboard with anchors for tie-down while underway. To starboard is a full-length settee with burl table, an Avanti built-in wine cooler and an up/down flat screen TV hidden from view behind. The entire space feels light and open due to (2) large deck hatches, teak-trimmed and custom tinted deck house windows and two hull windows.

NAV STATION:

Aft and to starboard is an L-shaped navigation station with easy access to the cockpit. There is a comfortable pedestal chair along with built-in backlit switch panels, navigation instruments and remote control panels for the water maker and tank monitors. The workspace also includes a chart table with custom storage for computer and (in adjacent cabin) a printer.

GALLEY:

Further aft and to port is a long walk-through galley that is fully equipped for comfortable living at sea or on anchor. There are several well thought out storage lockers for glass, dinnerware and appliances including a full pantry. Some of the many features include:

- Granite countertops
- (2) Custom stainless sinks
- Twin Frigoboat stainless steel front-opening DC refrigerator units (can be used as freezer units), upper unit new, 2019
- Frigoboat top/front opening DC freezer compartment
- U-line icemaker (2019)
- Force 10 3-burner propane stove with oven and stainless cover
- GE Advantium convection/microwave oven (2014)
- Fisher & Paykel dishwasher drawer
- Broan trash compactor
- Coffee and espresso machines
- Full complement of dishes, glasses, cutlery, galleyware etc.
- (4) Opening portholes for exceptional light and ventilation

CREW QUARTERS/GUEST CABIN:

A passageway leads aft along the starboard side to the owner's cabin with a roomy fourth cabin outboard – quite suitable for crew or guests -- with over/under berths, plus a private head with shower. There are (2) opening portholes, plus (1) in the head.

MASTER STATEROOM:

The owner's private stateroom is located aft and features a large 66" berth on centerline, and a seat and desk to port and a settee to starboard. There are (2) large hanging lockers, (10) drawers and numerous cabinets. Extended beam is carried well aft to create a spacious, open cabin accentuated by twin hull port lights, a deck hatch and (6) opening portholes. A private head with separate shower stall and (2) opening portholes is found along the port side, with a passageway

forward to the galley that can be opened when desired.

NAVIGATION EQUIPMENT

- Raymarine 48 nm HD color radar and chart plotter with hybrid touch screens including (2) E90W displays at helm pedestals and E 120W display at nav station, with spare E90 display in storage
- (2) Raystar 125 WAAS GPS sensors
- Raymarine AIS 650 transmitter/receiver
- Raymarine sailing instruments with ST60 speed, wind and depth displays in cockpit and ST60 graphic display in port fwd. cabin
- Raymarine ST 6002 autopilot with remote at nav station, plus wireless remote
- ICOM 604A VHF with command mic and hailer
- ICOM M-802 SSB with auto tuner and insulated backstay antenna
- Cell phone mast head antenna, amplifier and wireless repeater
- KVH FB250 sat phone

ENTERTAINMENT EQUIPMENT

- KVH M7 Tracvision Sat TV system
- Main salon widescreen 32" Samsung TV with lift to hide from view
- Samsung 26" flat screen TV in owner's cabin
- Samsung 19" flat screen TV's in each double guest cabin forward
- Bose Lifestyle 38 surround sound stereo/CD/DVD system in main salon, also feeding (4) Bose speakers in cockpit powered by twin amplifiers
- Independent JVC stereo/CD/DVD players, speakers and audio amplifiers in each cabin

ELECTRICAL SYSTEM

- 12/24 Volt DC and 110 Volt AC electrical systems with custom panels at nav station
- Northern Lights 16 kW generator (new 2015 - 7,385 hours as of May, 2021. 5,000-hr. service completed. New exhaust elbow, heat exchanger and injectors, 2020.)
- (2) Mastervolt 80/24 Volt amp battery chargers
- (1) Mastervolt 12 Volt battery charger
- Mastervolt 4,000 watt inverter
- Balmar 220 amp/24 volt alternator in addition to std. 70 amp
- (8) 24 Volt AGM house batteries, 1000 AH (new, 2020)
- Engine, generator and 12 Volt house batteries (new 2015)
- (2) 50 amp/240 Volt shore inlets with cables and multiple adapters
- (2) 32 amp/220 Volt European shore inlets with cables
- Victron 15 KVA isolation transformer able to handle shore power anywhere in the world

- TV/phone inlet
- Electrical bonding system including (2) 3” copper strips bow to stern each side
- 12 Volt plugs in cockpit and at nav station
- Cabin fans at each berth and in main salon, galley and heads
- Exhaust blowers for all heads
- Rope accent foot lighting throughout
- (3) Underwater lights at transom
- Transom LED stair lighting
- LED navigation lights

ENGINE/MECHANICAL EQUIPMENT

- Yanmar 6BY- 260 hp diesel with dripless shaft seal, shaft isolation coupler and Maxi 4-blade feathering propeller. 6,068 hours May 2021
- 5,000-hour engine service April 2018, including heat exchanger, turbo, aftercooler and new cutlass bearings
- Shaft cutters and line deflector for rudder
- Dual Racor fuel filters with bypass valves for fuel polishing
- Mamba mechanical steering system
- Engine room blower
- Electric oil change pump for main engine and generator
- Fireboy MA2-450 automatic engine room fire extinguisher
- Lewmar 300 TT 24 Volt bow thruster
- Cruisair reverse-cycle air conditioning with (4) zones – 65,000 BTU total, plus additional 9,000 BTU unit in engine room
- Masterflush toilets for master and fwd. guest heads (new, 2019)
- VacuFlush automatic toilet with electric fresh water flush for aft and port cabin guest heads
- Pressurized fresh water with dual pumps (new, 2014)
- Seaward 18-gallon hot water heater
- Seagull IV-X6 water filtration system plumbed to all cold water taps
- (2) Fiberglass black water tanks with custom monitor panel, and (3) gray water collectors – all with automatic pump-out
- Custom Wema monitor panels for easy fuel and water tank level management
- Spectra 700 MK II 110/12 Volt watermaker
- Beam central vacuum system
- Twin automatic electric bilge pumps, plus lazarette pump
- (2) Manual bilge pumps
- Anchor wash down pump (fresh and salt water)
- Splendide washer/dryer (2016)
- (2) 20 lb. and (1) 10-lb. propane tanks and regulator in ventilated deck locker

SAILS and RIGGING

- Forespar three-spreader aluminum mast, painted white (new paint 2018)
- LeisureFurl hydraulic in-boom mainsail furling system (re-built, reinforced and painted, 2014, new furling motor and gooseneck added, 2016, and universal rebuilt, 2020)
- Furlex hydraulic genoa and staysail furlers (both re-built 2018)
- Harken Hydra 2 hydraulic system to power furlers and winches
- Navtec rod standing rigging (all dye tested, 2014)
- New genoa halyard, genoa sheets and staysail sheets, 2020
- PBO running backstays with retrieving lines
- GMT carbon fiber spinnaker/whisker pole, stored on mast
- Navtec hydraulic boom vang and split backstay controls, with Harken push-button control panel at helm
- Boom preventer built-in
- Lewmar mainsheet traveler system
- Steaming, foredeck and aft deck lights
- Up/down spreader lights
- Doyle crescent cut Dacron fully battened furling mainsail (Oct. 2020)
- Doyle crescent cut Dacron 135% furling genoa with sunshield (Oct. 2020)
- Doyle Dacron furling staysail (Oct. 2020)
- Doyle asymmetrical spinnaker with sock (2013)
- Antal W 80 hydraulic self-tailing primary winches
- Antal W 66 hydraulic self-tailing mainsheet and main halyard winches
- Antal W 66 hydraulic self-tailing staysail/runner winches
- Antal W 44 self-tailing traveler control winches
- Antal W 52 self-tailing genoa and W 48 self-tailing staysail halyard winches at mast

HULL

Solid hand-laid Twaron reinforced fiberglass hull using Vinylester resins and Isophthalic Gelcoat with epoxy barrier coating. Balanced spade rudder with partial skeg for optimal performance, strength and protection. There are watertight collision bulkheads aft of forepeak locker and forward of aft lazarette. White Gelcoat topsides, blue cove stripe, double blue boot stripes (new 2018) and blue bottom (new Dec. 2020). There are (6) Lexan topside windows.

DECK

Fiberglass with balsa core and solid laminate in areas of deck hardware, white Gelcoat and molded-in gray non-skid. Modern transom with molded-in steps, swim platform and built-in swim ladder. There is a transom garage door that opens hydraulically for easy access to extensive storage space with custom shelving, along with large corner lazarette lockers each side, accessible on the aft deck. On the foredeck there is a deep forepeak locker with line hangers and a separate split chain locker forward.

Aluminum toe rails and all stainless deck hardware, including (7) low-profile stainless hatches (new Lexan 2018), (20) opening portholes, double anchor rollers, Antal genoa tracks and cars, Harken turning blocks, mooring cleats etc.

COCKPIT

One of the many highlights of VOO DOO's design is the spacious cockpit with twin helm stations for easy access from the aft deck and great visibility while steering. The cockpit seating was customized by the owner to maximize seating for ten comfortably around a beautiful varnished 6' teak table with drop-leaves and built-in drink cooler.

The twin helms are designed for short-handed sailing, with all sail controls within easy reach. The helm area was customized by lowering the coaming outboard each helm, for easier access to side decks.

OTHER FEATURES

- Twin Lewmar hydraulic anchor windlasses
- Rocna 88 lb. anchor with 300' 1/2" chain (new chain, 2018; anchor re-galvanized, 2019)
- Delta 80 lb. anchor with 30' 1/2" chain and nylon rode
- Varnished teak handrails
- Teak cockpit sole and seat tops
- Stern pulpit extended to side gates with drop-down teak pushpit seats each side and on center
- Dodger and bimini (blue), with oversized 1-1/4" S/S frame, clear connector, helm windows, full enclosures and removable side shades (Bimini new, Oct. 2020)
- Adjustable white and blue lighting wired into bimini
- Cockpit cushions with backrest cushions
- Helm cushions with backrest bolsters
- Sun cushions for foredeck
- Covers for cockpit table, hand rails and grill
- Cup holders throughout
- Hot/cold shower at transom
- Ritchie 6" compass at each pedestal with stainless grab bars
- Winslow 8-man life raft in canister, mounted on stern rail
- Switlik MOM
- ACR EPIRB
- Twin radar reflectors on mast
- Sea anchor
- (2) Horseshoe life rings
- (8) Life jackets
- Flare kit

- (6) Fenders and (10) dock lines
- Varnished teak companionway hatch slides with padded storage bag
- (2) Teak/stainless side-boarding ladders
- Exit carbon fiber passarelle
- Simpson Cobra 400 dinghy davits with electric hoist (painted 2018)
- AB 14' Aluminum-bottom tender (2016)
- Evinrude ETEC 40 HP outboard motor (2016)
- Leather steering wheel covers
- Bosun's chair
- Stainless gas grill
- Numerous spares

EXCLUSIONS

- Personal effects
- Art work
- Dive equipment
- Revere life raft in valise
- Medical kit
- Tools
- Ditch bag

Исключения

При продаже яхты исключаются личные вещи владельца.

Отказ от ответственности

Компания предоставляет описание судна или яхты добросовестно, но не может гарантировать точность этой информации, а также не ручается за техническое состояние. Покупатель должен проинструктировать своих агентов или оценщиков исследовать представленную информацию более подробно, по собственному желанию. Продажа судна или яхты, изменение цены или снятие с продажи будет происходить без предварительного уведомления.

ФОТОГРАФИИ

Bow View



Foredeck



Looking Forward



Deck Looking Aft



Dodger and Bimini



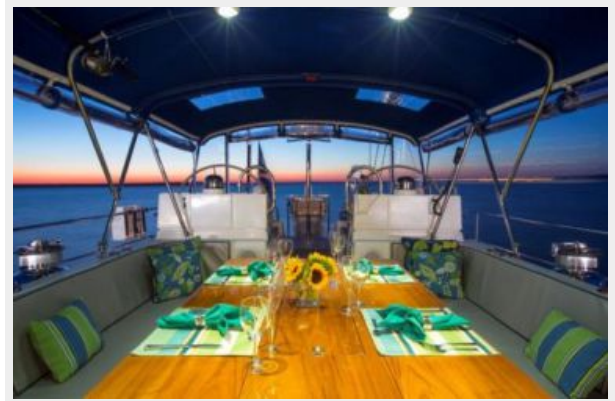
Сockpit



Cockpit Table



Cockpit Looking Aft



Looking Aft from Helm



Starboard Helm



Port Helm



Rig



Aft Deck



Main Salon (Old Upholstery)



Main Salon (New Upholstery)



Main Salon, Port Side



Main Salon, Starboard Side



Main Salon, TV Raised



Nav Station



Galley Looking Forward



Galley Looking Aft



Forward VIP Stateroom



Forward VIP Stateroom, Looking Aft



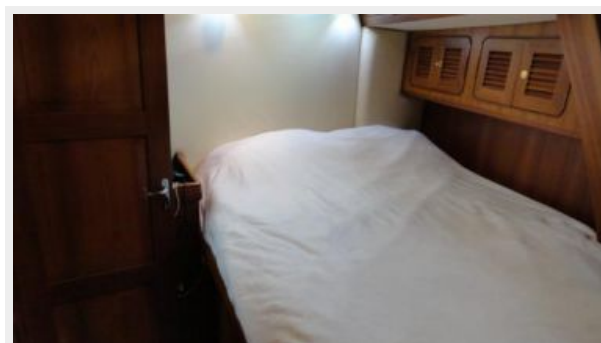
VIP Head



Foreard Guest Shower



Port Guest Stateroom



Port Guest Head



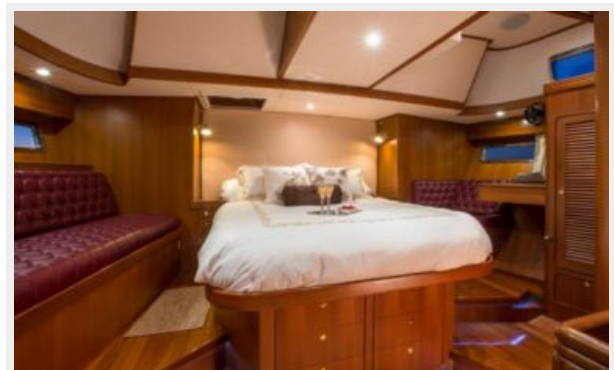
Crew Quarters/Guest Stateroom



Crew Quarters/Guest Head



Owner's Stateroom



Owner's Stateroom, Stbd. Side



Owner's Head



Owner's Shower



Engine Room Aft



Engine Room Fwd.



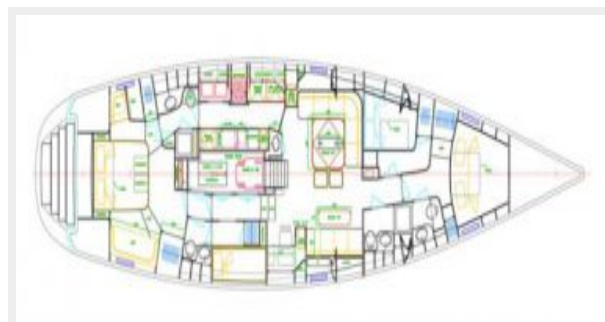
Full Profile



Under Sail



Layout



КОНТАКТЫ

Андрей Шестаков (Andrey Shestakov) – ведущий яхтенный брокер отдела продаж яхт и судов компании Shestakov Yacht Sales Inc. Официальный представитель Shestakov Yacht Sales Inc. для русскоговорящих клиентов в центральном офисе компании в Майами/Форт Лодердейл/Флорида/США.

Контактная информация

Email: andrey@shestakovyachtsales.com

Web: shestakovyachtsales.com

Телефоны

Краснодарский край: **+7(918)465-66-44**

США, Майами, Флорида: **+1(954)274-4435**

Время работы

Понедельник – Суббота: **9:00 - 21:00**
EDT

Воскресенье: **Закрито**

Адрес



Harbour Towne Marina, 850 NE 3rd St,
STE 213, Dania, FL 33004