

## FRIENDLY CONFINES — WESTPORT



**Builder:** WESTPORT

**Year Built:** 2015

**Model:** SHELBY

**Price:** PRICE ON APPLICATION

**Location:** United States

**LOA:** 112' 0" (34.14m)

**Beam:** 23' 9" (7.24m)

**Max Draft:** 5' 6" (1.68m)

**Cruise Speed:** 22 Kts. (25 MPH)

**Max Speed:** 27 Kts. (31 MPH)

Our experienced yacht broker, Andrey Shestakov, will help you choose and buy a yacht that best suits your needs **FRIENDLY CONFINES — WESTPORT** from our catalogue. Presently, at Shestakov Yacht Sales Inc., we have a wide variety of yachts available on our sale's list. We also work in close contact with all the big yacht manufacturers from all over the world.

If you would like to buy a yacht **FRIENDLY CONFINES — WESTPORT** or would like help answering any questions concerning purchasing, selling or chartering a yacht, please call **+1(954)274-4435**

# TABLE OF CONTENTS

TABLE OF CONTENTS	2
SPECIFICATIONS	8
Overview	8
Basic Information	8
Dimensions	8
Speed, Capacities and Weight	9
Accommodations	9
Hull and Deck Information	9
Engine Information	9
DETAILED INFORMATION	10
Aft Deck	10
Salon	10
Dining Area	11
Galley	11
Main Deck Foyer	11
Day Head	12
Master Stateroom and His and Her Heads	12
Guest Foyer	12
Port Guest Stateroom	12
Starboard Twin Guest Stateroom	13
VIP Stateroom Forward	13
Crew Quarters	14
Pilothouse	15
Flybridge	15
Deck Equipment	16
Main Machinery	16
Mechanical	17
Electrical Systems	17

Communication and Navigation Equipment	17
Safety and Security	18
Exclusions	18
Exclusions	18
Disclaimer	18
PHOTOS	20
DJI_0169	20
DJI_0148	20
DJI_0273	20
DJI_0150	20
DJI_0139	20
DJI_0147	20
DJI_0176	21
DJI_0120	21
DJI_0113	21
112 Westport (114 of 222)	21
112 Westport (109 of 222)	21
112 Westport (107 of 222)	21
DJI_0210	22
DJI_0154	22
DJI_0204	22
112 Westport (135 of 222)	22
112 Westport (124 of 222)	22
112 Westport (123 of 222)	22
112 Westport (122 of 222)	23
112 Westport (121 of 222)	23
112 Westport (120 of 222)	23
112 Westport (119 of 222)	23
112 Westport (118 of 222)	23

---

112 Westport (117 of 222)	23
112 Westport (76 of 222)	23
112 Westport (58 of 222)	23
112 Westport (53 of 222)	24
112 Westport (70 of 222)	24
112 Westport (66 of 222)	24
112 Westport (62 of 222)	24
112 Westport (64 of 222)	24
112 Westport (73 of 222)	24
112 Westport (170 of 222)	24
112 Westport (136 of 222)	24
112 Westport (138 of 222)	25
112 Westport (166 of 222)	25
112 Westport (182 of 222)	25
112 Westport (173 of 222)	25
112 Westport (176 of 222)	25
112 Westport (175 of 222)	25
112 Westport (174 of 222)	25
112 Westport (178 of 222)	25
112 Westport (42 of 222)	26
112 Westport (36 of 222)	26
112 Westport (8 of 222)	26
112 Westport (6 of 222)	26
112 Westport (4 of 222)	26
112 Westport (3 of 222)	26
112 Westport (5 of 222)	26
112 Westport (13 of 222)	26
112 Westport (12 of 222)	27
112 Westport (11 of 222)	27

---

---

112 Westport (14 of 222)	27
112 Westport (51 of 222)	27
112 Westport (43 of 222)	27
112 Westport (18 of 222)	27
112 Westport (19 of 222)	27
112 Westport (23 of 222)	27
112 Westport (26 of 222)	28
112 Westport (27 of 222)	28
112 Westport (31 of 222)	28
112 Westport (89 of 222)	28
112 Westport (99 of 222)	28
112 Westport (98 of 222)	28
112 Westport (96 of 222)	28
112 Westport (94 of 222)	28
112 Westport (93 of 222)	29
112 Westport (90 of 222)	29
112 Westport (100 of 222)	29
112 Westport (103 of 222)	29
112 Westport (78 of 222)	29
112 Westport (79 of 222)	29
112 Westport (80 of 222)	29
112 Westport (81 of 222)	29
112 Westport (82 of 222)	30
112 Westport (84 of 222)	30
112 Westport (148 of 222)	30
112 Westport (159 of 222)	30
112 Westport (158 of 222)	30
112 Westport (156 of 222)	30
112 Westport (154 of 222)	30

---

---

112 Westport (155 of 222)	30
DJI_0141	31
DJI_0248	31
112 Westport (143 of 222)	31
112 Westport (165 of 222)	31
112 Westport (144 of 222)	31
112 Westport (192 of 222)	31
112 Westport (194 of 222)	31
112 Westport (195 of 222)	31
112 Westport (196 of 222)	32
112 Westport (187 of 222)	32
112 Westport (199 of 222)	32
112 Westport (200 of 222)	32
112 Westport (202 of 222)	32
112 Westport (204 of 222)	32
112 Westport (205 of 222)	32
112 Westport (206 of 222)	32
112 Westport (207 of 222)	33
112 Westport (208 of 222)	33
112 Westport (209 of 222)	33
112 Westport (210 of 222)	33
112 Westport (211 of 222)	33
112 Westport (212 of 222)	33
112 Westport (216 of 222)	33
112 Westport (217 of 222)	33
112 Westport (218 of 222)	34
112 Westport (220 of 222)	34
112 Westport (222 of 222)	34
CONTACTS	35

---

---

Contact details	35
Telephones	35
Office hours	35
Address	35

---

# SPECIFICATIONS

---

## Overview

---

FRIENDLY CONFINES is a 2015 Westport and the newest 112' to hit the market. She offers both quality and a unique design throughout including the compliments of beautiful light fabrics and rich mahogany woods. Exceptional performance provided by 16V 2600HP MTU's, Twin 65 kW Northern Lights generators and a host of up-graded features and equipment further prove the highest level of standards, that of which is the 112' Westport.

Some notable options:

- Over-sized engines for increased speed, 2600 HP replaced the standard 2000 HP
- Bow and Stern Thruster
- Oversized zero speed/ at anchor stabilization
- ASEA power converters with ability to accept 100 amp single, 3 phase, or 480 V
- Power cords at bow and stern
- Hydraulic Passarelle for Med Moor Docking
- Upgraded TV KVH HD 11

## Basic Information

---

**Category:** SHELBY

**Sub Category:** Pilothouse

**Model Year:** 2015

**Year Built:** 2015

**Country:** United States

## Dimensions

---

**LOA:** 112' 0" (34.14m)

**LWL:** 98' 8" (30.07m)

**Beam:** 23' 9" (7.24m)

**Max Draft:** 5' 6" (1.68m)



---

## Speed, Capacities and Weight

---

**Cruise Speed:** 22 Kts. (25 MPH)

**Max Speed:** 27 Kts. (31 MPH)

**Water Capacity:** 1000 Gallons

**Holding Tank:** 600 Gallons

**Fuel Capacity:** 5500 Gallons

---

## Accommodations

---

**Total Cabins:** 4

**Total Berths:** 5

**Total Heads:** 5

**Captain Cabin:** True

**Crew Cabin:** 2

---

## Hull and Deck Information

---

**Hull Material:** Composite

---

## Engine Information

---

**Engines:** 2

**Manufacturer:** MTU

**Model:** 16V2000M94

**Engine Type:** Inboard

**Fuel Type:** Diesel

---

## DETAILED INFORMATION

---

### Aft Deck

---

- Aft bench seating w/ cushions & cover
- Custom granite top table w/ hydraulic hi/low lift
- Wet bar w/granite top, sink, Perlick icemaker and under-counter refrigerator & storage locker
- (4) Teak & stainless bar stools
- (2) Boarding gates, port & stbd
- Spiral stairway w/teak steps to bridge deck
- Seura weatherproof 42" LCD TV
- (2) CCTV security camera
- Access door to crew quarters, stbd
- Overhead recessed lights
- Teak decks
- Large 4-panel polished stainless steel sliding glass door to salon
- Dual stairwell, port & stbd w/ teak steps & stainless handrails to swim platform
- Teak swim platform
- (2) Maxwell 3500 electric capstans, port & stbd w/ deck switch
- (2) Pop-up cleats
- (2) Mooring bits, port & stbd
- Removable polished stainless steel hand rails
- Freshwater washdown & hose
- Built-in 100 gallon gas tank for tender
- Pacific Coast watertight door to crew quarters/engine room
- (4) Underwater lights

### Salon

---

- Curved entry door from aft deck
- Up-dated contemporary new interior layout
- High gloss Walnut trim
- Granite Countertops
- Stainless steel fixtures
- Carpeted sole with runners Vinyl overhead
- Recessed overhead lights
- Five overhead stereo speakers
- Sofa, port and starboard
- Custom coffee table
- Two occasional chairs
- Fixed windows, four port and four starboard, with custom pleated shades on electric motors

- Fixed window, port and starboard aft athwartship, with blinds
- Samsung 65" LED television

---

## Dining Area

---

- Solid Walnut table with seating for 8 guests
- Built-in buffets to port and starboard
- Majilite vinyl headliner
- Large 4-panel polished stainless steel sliding electric door, weather tight, and direct bonded glass

---

## Galley

---

- Polished granite center island with (2) loose chairs
- Vinyl overheads
- Amtico flooring
- GE range hood with light and ventilation fan
- Dacor 5- burner induction glass ceramic cooktop
- Dacor under-counter convection oven
- (2) Perlick refrigerator/ freezer beverage drawers
- Asko dishwasher
- Sub-Zero side-by-side refrigerator/freezer with bin ice maker
- Filtered water dispenser
- Garbage compactor
- Keurig coffee maker
- Overhead exhaust fan
- Broan trash compactor
- Dual stainless steel sink with hot/cold Grohe water faucet with spray hose and with Insinkerator garbage disposal
- Instant hot water at sink Water filter
- Miele dishwasher
- Raised dinette with L-shaped bench seating Island

---

## Main Deck Foyer

---

- Polished stone flooring
- Overhead recessed lights
- Carpeted treads, step lights and S/S handrail at companionway to pilothouse
- Hanging locker

---

## Day Head

---

- Polished stone countertop
- Headhunter toilet system
- Vanity
- Under-mount sink

---

## Master Stateroom and His and Her Heads

---

- King berth on center
- Two built-in end tables with reading lamps
- Opening port lights- port and starboard
- Built-in dresser drawers
- Make-up vanity (starboard)
- Love seat sofa with storage
- Walk-in closet- additional chest of drawers and shoe rack
- Amsec safe in closet
- 65" Samsung LED TV, Surround sound receiver, speakers, Sat receiver, Blue Ray DVD & Crestron touch control
- Recessed LED lighting

### His and Her Heads

- Marble countertop
- Ceramic sink
- Headhunter toilet system
- Large medicine cabinet with storage
- Linen storage locker
- Marble shower with bench seating
- Frameless shower enclosure

---

## Guest Foyer

---

- Marble tile flooring
- Overhead lighting
- Guest stairs have lift-up section to allow for storage

---

## Port Guest Stateroom

---

- Queen berth on center
- Twin nightstands
- Reading lamps on either side

- (2) Portlights with blinds
- Built-in dresser w/ cabinets & drawers
- Hanging locker with mirrored door
- 27" Samsung LED TV, Sat receiver, Blue Ray DVD, speakers, iPod docking station, Crestron control
- Recessed LED lighting

## Head

- Marble countertop
- Headhunter toilet system
- Ceramic Sink
- Vanity and medicine cabinet
- Mirrored wall
- Fiberglass lined shower

---

## Starboard Twin Guest Stateroom

---

- Twin berths with storage underneath
- Nightstand
- Twin reading lamps
- (2) portlights
- Hanging locker with mirrored door
- Recessed LED lighting
- 27" Samsung LED TV, Sat receiver, Blue Ray DVD, speakers, iPod docking station, Crestron control

## Head

- Marble countertop
- Headhunter toilet system
- Ceramic sink
- Mirrored wall
- Vanity and medicine cabinet
- Fiberglass lined shower

---

## VIP Stateroom Forward

---

- Full size berth
- Reading lamps on either side
- Custom overhead soffit accent lighting

- Built-in dresser w/ cabinets & drawers
- Make-up vanity (portside)
- Recessed LED lighting
- 42" Samsung LED TV, Sat receiver, Blue Ray DVD, speakers, iPod docking station & Crestron control

## Head

- Marble countertop
- Ceramic sink
- Headhunter toilet system
- Large mirrored medicine cabinet with storage
- Fiberglass lined shower
- Linen and storage locker

---

## Crew Quarters

The crew quarters can be accessed by either the stairway down from the aft deck starboard side or through the transom.

## Captain's Cabin

- Queen size berth
- Reading lamps
- Port lights
- Large storage cabinet with drawers
- (2) Hanging lockers
- Desk
- VIC II- ship's touchscreen monitoring display
- 31" Samsung LED TV, Sat receiver, Blue Ray DVD, speakers, iPod docking station, Crestron control

## Crew Cabins

- High/ low bunks
- Storage Drawers
- Hanging locker
- 21" Samsung LED TV, Sat receiver, Blue Ray DVD, Crestron control

## Crew Mess

- L-shaped settee
- Corian countertop
- Storage cabinets
- Manufactured stone countertop

- S/S sink
- Storage cabinets
- GE microwave convection oven
- Perlick under-counter refrigerator
- Freezer
- Miele washer and dryer
- 21" Samsung LED TV, Sat receiver, Blue Ray DVD, speakers, iPod docking station, Crestron control

### **Captain/ Crew Heads**

- Manufactured stone countertop
- Stainless steel sink
- Large mirrored medicine cabinet
- Galley Maid electronic toilet
- Enclosed shower
- Port light

### **Pilothouse**

- Curved leather bench seating w/ dual pedestal table
- Crown Pedestal helm chair
- Custom mahogany steering wheel
- Mirrored panels on aft bulkhead
- Navigation station aft w/ NEC computer
- Stairway to starboard foyer w/ handrail & courtesy lights
- Stairway to flybridge, aft port w/ courtesy lights
- Carpeting throughout
- Custom overhead panels w/ recessed lights
- (2) Overhead speakers
- Three panel windshield with washers and wipers
- Navigator's communications desk
- Crestron A/V control

### **Flybridge**

- Full center helm station
- Stidd double helmseat & (2) companion chairs w/ footrests
- (2) Wing stations, port & stbd w/ flip-up steering units
- Built-in sunlounge w/cushions & storage below
- Raised settee w/cushions, storage & marble table w/dual pedestals
- Wet bar w/ sink, icemaker, Sub-Zero 2-drawer refrigerator, storage lockers & Gaggenau stainless BBQ grill aft, Perlick beverage refrigerator

- (4) High gloss teak bar stools w/ back & foot rest
- 42" LG TV
- Sliding door to pilothouse
- Molded-in hot tub spa w/ sun pad top & storage below
- Nautical Structures hydraulic crane- 2500lb
- Removable chocks for jetskis
- Stainless steel rails w/ mid rail around boat deck
- Stairwell to aft deck

## Deck Equipment

---

- Nautical Structures davit crane- 2500lb
- (2) Zodiac 8-man life rafts on hydro-static releases
- 20' Nautical Structures passarelle
- Seaquip accommodation ladder
- Sun lounges on forward deck w/ cushions, cover & storage below
- Keyhole settee w/ cushions & cover, forward deck
- Dual Navy stockless stainless steel anchors
- (2) Galvanized steel short link anchor chains- (1) is 250', (1) is 350'
- (2)Maxwell hydraulic windlass
- (2)Maxwell Capstans
- Stainless steel bow rail & stanchions, port & stbd
- Non-skid decks
- Courtesy lights, port & stbd
- CCTV cameras, port & stbd

## Main Machinery

---

- Main Engines: (2) MTU 16V2000M94 CR
- Port Engine Hours: 2,450
- Starboard Engine Hours: 2,450
- Generators: (2) 65kW 1800 rpm Northern Lights with compound mounts, sound shields (internal water/exhaust separation/mufflers)
- Generator Hours: Port and Starboard- 7,300 hours
- Bow and Stern Thruster American Bow Thruster 16" 40HP hydraulic single prop with four station controls
- Naiad Zero Speed Stabilizers
- Gear Boxes 2 x ZF model #ZF3070
- 4" Aquamet 22H.S. shafts
- 48" Michigan Nibral 5-blade propellers custom wheels
- Jastram power steering with dual, engine driven pumps, and four steering stations: pilothouse, flybridge, and port & starboard wing stations; pilothouse and flybridge stations



include RAI indicator, horn, start/stop buttons, and thruster controls; Wing Stations include RAI indicator, start/stop buttons, and thruster controls

---

## Mechanical

---

- Bow and Stern thruster
- (2) Electric bilge pumps + manifold
- Air compressor
- (4) Dometic Marine AC chillers
- Battery chargers
- (2) Fresh water makers
- Head Hunter MSD waste system
- Alfa Laval fuel polisher

---

## Electrical Systems

---

- 4) 12v 8D batteries for engines & house
- (2) 12V batteries for gens
- Newmar battery charger
- (2) Glendenning 100-amp shore power cords
- Glendenning cablemaster reels
- Crestron lighting controls
- Underwater lights
- Glendenning power cables- bow and stern
- (2) ASEA power converters: 100-200-208-480 V
- Boa pre-wired with both 60 and 50 Hz plugs

---

## Communication and Navigation Equipment

---

- (2) Furuno X-Band Radars with 19" LCD display, one repeater on Flybridge
- Ritchie Magnetic Compass
- Simrad Auto Pilot AP 70
- Furuno Depth Sounder with 15" LCD Monitor
- Furuno Video Sounder
- Furuno GPS150 (2)
- Furuno Maxsea charting system
- Nauticomp- Wind Indicator Station
- Brooks & Gatehouse HS3000 digital depth/speed/wind
- (2) Icom M604 VHF's
- Icom M802 SSB
- KVH Satellite communication system

- Panasonic Telephone System
- FLIR Night vision camera
- KVH HD 11 SAT TV
- KVH V7 HTC V SAT Internet

---

## Safety and Security

---

### Safety Equipment

- (2) Zodiac 8-man life rafts
- Life Preservers- (13) adult (6) children
- (2) Life rings
- EPIRB: McMurdo
- Carlisle & Finch search lights

### Camera System

- (8) Cameras throughout the vessel

---

## Exclusions

---

- Name reserved - including the actual stainless steel name boards
- All personal items and belongings
- Wine and liquor collection / personal glasses
- Chef's personal utensils / knives / platters - All stemware and flatware to remain
- Fishing rods, tackle and gear
- Ditch bag / Medical kit
- Jet skis ( 2 )
- Personal Tools

---

## Exclusions

---

Owner's personal belongings.

---

## Disclaimer

---

The Company offers the details of this vessel or yacht in good faith but cannot guarantee or warrant the accuracy of this information nor warrant the condition of the vessel. A buyer should instruct his representatives, agents, or his surveyors, to investigate such details as the buyer desires validated. This vessel or yacht is offered subject to prior sale, price change, or withdrawal

without notice.

# PHOTOS

DJI\_0148



DJI\_0169



DJI\_0273



DJI\_0150



DJI\_0147



DJI\_0139



DJI\_0120



DJI\_0176



DJI\_0113



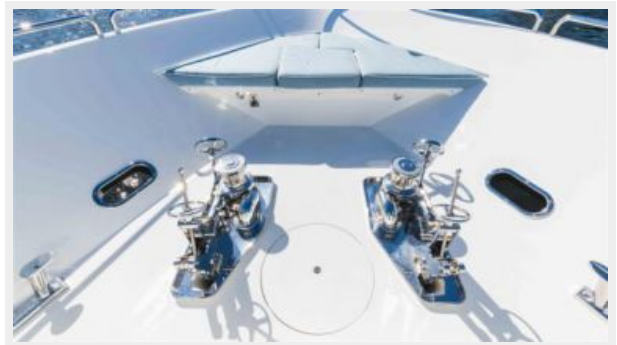
112 Westport (114 of 222)



112 Westport (109 of 222)



112 Westport (107 of 222)



DJI\_0154



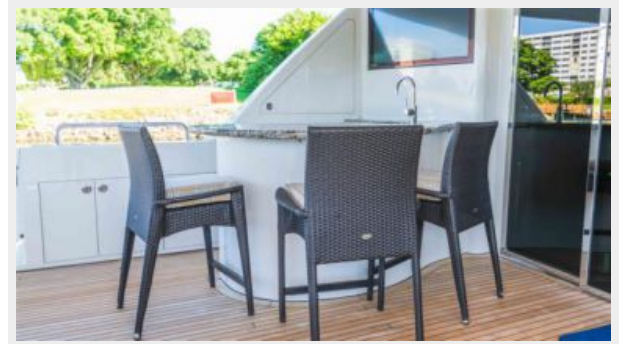
DJI\_0210



DJI\_0204



112 Westport (135 of 222)



112 Westport (124 of 222)



112 Westport (123 of 222)



112 Westport (122 of 222)



112 Westport (121 of 222)



112 Westport (120 of 222)



112 Westport (119 of 222)



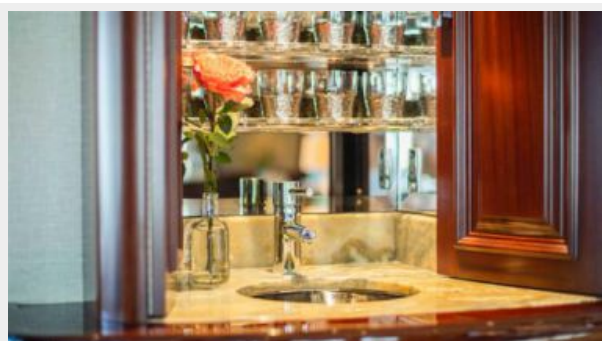
112 Westport (118 of 222)



112 Westport (117 of 222)



112 Westport (76 of 222)



112 Westport (58 of 222)



112 Westport (53 of 222)



112 Westport (70 of 222)



112 Westport (66 of 222)



112 Westport (62 of 222)



112 Westport (64 of 222)



112 Westport (73 of 222)



112 Westport (170 of 222)



112 Westport (136 of 222)





112 Westport (138 of 222)



112 Westport (166 of 222)



112 Westport (182 of 222)



112 Westport (173 of 222)



112 Westport (176 of 222)



112 Westport (175 of 222)



112 Westport (174 of 222)



112 Westport (178 of 222)



112 Westport (42 of 222)



112 Westport (36 of 222)



112 Westport (8 of 222)



112 Westport (6 of 222)



112 Westport (4 of 222)



112 Westport (3 of 222)



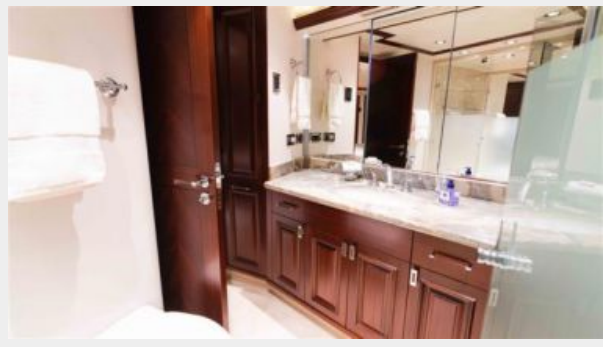
112 Westport (5 of 222)



112 Westport (13 of 222)



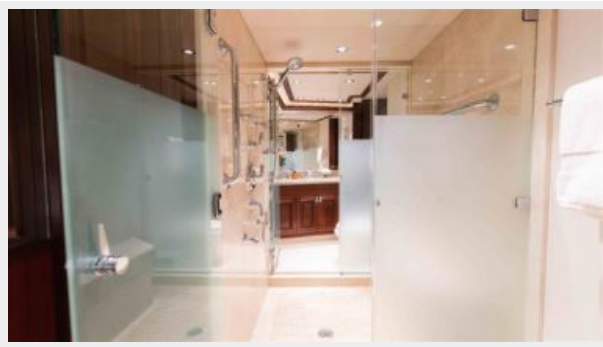
112 Westport (12 of 222)



112 Westport (11 of 222)



112 Westport (14 of 222)



112 Westport (51 of 222)



112 Westport (43 of 222)



112 Westport (18 of 222)



112 Westport (19 of 222)



112 Westport (23 of 222)



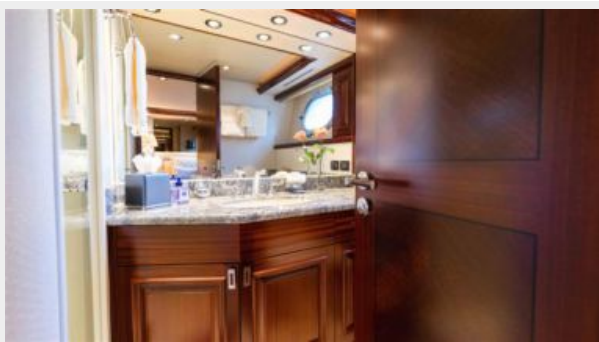
112 Westport (26 of 222)



112 Westport (27 of 222)



112 Westport (31 of 222)



112 Westport (89 of 222)



112 Westport (99 of 222)



112 Westport (98 of 222)



112 Westport (96 of 222)



112 Westport (94 of 222)



112 Westport (93 of 222)



112 Westport (90 of 222)



112 Westport (100 of 222)



112 Westport (103 of 222)



112 Westport (78 of 222)



112 Westport (79 of 222)



112 Westport (80 of 222)



112 Westport (81 of 222)



112 Westport (82 of 222)



112 Westport (84 of 222)



112 Westport (148 of 222)



112 Westport (159 of 222)



112 Westport (158 of 222)



112 Westport (156 of 222)



112 Westport (154 of 222)



112 Westport (155 of 222)



DJI\_0141



DJI\_0248



112 Westport (143 of 222)



112 Westport (165 of 222)



112 Westport (144 of 222)



112 Westport (192 of 222)



112 Westport (194 of 222)



112 Westport (195 of 222)



112 Westport (196 of 222)



112 Westport (187 of 222)



112 Westport (199 of 222)



112 Westport (200 of 222)



112 Westport (202 of 222)



112 Westport (204 of 222)



112 Westport (205 of 222)



112 Westport (206 of 222)





112 Westport (207 of 222)



112 Westport (208 of 222)



112 Westport (209 of 222)



112 Westport (210 of 222)



112 Westport (211 of 222)



112 Westport (212 of 222)



112 Westport (216 of 222)



112 Westport (217 of 222)



112 Westport (218 of 222)



112 Westport (220 of 222)



112 Westport (222 of 222)



# CONTACTS

---

Andrey Shestakov, leading yacht broker of the sales department of Shestakov Yacht Sales Inc. Shestakov Yacht Sales Inc., the official representative of the Miami/Fort Lauderdale FL headquarters.

## Contact details

---

Email: [andrey@shestakovyachtsales.com](mailto:andrey@shestakovyachtsales.com)

Web: [shestakovyachtsales.com/en/](http://shestakovyachtsales.com/en/)

## Telephones

---

USA: +1(954)274-4435

## Office hours

---

Monday – Saturday: **9:00 - 21:00** EDT

Sunday: **closed**

## Address

---



Harbour Towne Marina, 850 NE 3rd St,  
STE 213, Dania, FL 33004