

RED ROVER — ERICSON YACHTS



Builder: ERICSON YACHTS

Year Built: 1982

Model: Sloop

Price: PRICE ON APPLICATION

Location: United States

LOA: 38' 0" (11.58m)

Beam: 12' 0" (3.66m)

Max Draft: 11' 8" (3.56m)

Cruise Speed: 6 Kts. (7 MPH)

Max Speed: 8 Kts. (9 MPH)

Our experienced yacht broker, Andrey Shestakov, will help you choose and buy a yacht that best suits your needs **Red Rover — ERICSON YACHTS** from our catalogue. Presently, at Shestakov Yacht Sales Inc., we have a wide variety of yachts available on our sale's list. We also work in close contact with all the big yacht manufacturers from all over the world.

If you would like to buy a yacht **Red Rover — ERICSON YACHTS** or would like help answering any questions concerning purchasing, selling or chartering a yacht, please call **+1(954)274-4435**

TABLE OF CONTENTS

TABLE OF CONTENTS	2
SPECIFICATIONS	5
Overview	5
Basic Information	5
Dimensions	5
Speed, Capacities and Weight	5
Accommodations	5
Hull and Deck Information	6
Engine Information	6
DETAILED INFORMATION	7
MAIN DESCRIPTION	7
ERICSON 38' DECK AND HULL	7
38 ERICSON RIGGING AND SAILS	7
38' ERISCON COCKPIT AND HELM	7
38' ERICSON ACCOMMODATIONS	7
38' ERICSON HEAD AND SHOWER	7
38' ERICSON GALLEY AND SALON	7
38' ERICSON ENGINE AND MECHANICALS	8
38' ERICSON ELECTRICAL	8
38' ERICSON SAFETY EQUIPMENT	8
DISCLAIMER	8
Exclusions	8
Disclaimer	8
PHOTOS	9
1 Red Rover 1982 38' Ericson	9
IMG_3263 (edited-Pixlr) (2)	9
IMG_3265	9
IMG_3263 (edited-Pixlr)	9

IMG_3269 (edited-Pixlr)	10
IMG_3270 (edited-Pixlr)	10
IMG_3270	10
IMG_3272 (edited-Pixlr)	10
IMG_3274 (edited-Pixlr)	11
IMG_3273 (edited-Pixlr)	11
IMG_3276 (edited-Pixlr)	11
IMG_3275 (edited-Pixlr)	11
IMG_3278 (1) (edited-Pixlr)	12
IMG_3277 (edited-Pixlr)	12
IMG_3278	12
IMG_3279 (edited-Pixlr)	12
IMG_3279	13
IMG_3280 (edited-Pixlr)	13
IMG_3283 (edited-Pixlr)	13
IMG_3282 (edited-Pixlr)	13
IMG_3284 (edited-Pixlr)	14
IMG_3284	14
IMG_3286 (edited-Pixlr)	14
IMG_3285 (edited-Pixlr)	14
IMG_3287 (edited-Pixlr)	15
IMG_3288 (edited-Pixlr)	15
IMG_3289 (edited-Pixlr)	15
IMG_3290 (edited-Pixlr)	15
IMG_3291 (edited-Pixlr)	16
IMG_3292 (edited-Pixlr)	16
IMG_3292	16
IMG_3294 (edited-Pixlr)	16
IMG_3296 (edited-Pixlr)	17

IMG_3295 (edited-Pixlr)	17
IMG_3297 (edited-Pixlr)	17
IMG_3298 (edited-Pixlr)	17
IMG_3299 (edited-Pixlr)	18
CONTACTS	19
Contact details	19
Telephones	19
Office hours	19
Address	19

SPECIFICATIONS

Overview

"Red Rover" is a solid built Ericson 38' sloop rigged sailboat that has spent most of her life in the waters of the Chesapeake Bay. She is well equipped and ready for a new owner! With plenty of space below for the whole family, she has spacious accommodations as well as room to move about. Full Navigation station and full galley. A must see if you are looking for a great cruising sailboat!

Basic Information

Category: Sloop

Model Year: 1982

Year Built: 1982

Country: United States

Dimensions

LOA: 38' 0" (11.58m)

Beam: 12' 0" (3.66m)

Max Draft: 11' 8" (3.56m)

Speed, Capacities and Weight

Cruise Speed: 6 Kts. (7 MPH)

Max Speed: 8 Kts. (9 MPH)

Displacement: 14850 Pounds

Accommodations

Total Cabins: 2

Total Berths: 4

Total Heads: 1

Hull and Deck Information

Hull Material: Fiberglass

Engine Information

Engines: 1

Manufacturer: westerbeke

Model: B38

Engine Type: Inboard

Fuel Type: Diesel

DETAILED INFORMATION

MAIN DESCRIPTION

"Red Rover" is a solid built Ericson 38' sloop rigged sailboat that has spent most of her life in the waters of the Chesapeake Bay. She is well equipped and ready for a new owner! With plenty of space below for the whole family, she has spacious accommodations as well as room to move about. Full Navigation station and full galley. A must see if you are looking for a great cruising sailboat!

ERICSON 38' DECK AND HULL

Solid fiberglass hull Shoal draft keel New Prop Last bottom painted in Summer 2019 Transom swim ladder Lifelines and railings Dock lines and fenders 35lb CQR mounted on anchor bracket Anchor wash down Bimini and dodger canvas

38 ERICSON RIGGING AND SAILS

Aluminum mast and aluminum boom Harkin MK2 roller furling Shaffer blocks Hydraulic backstay Two Bariant winches One Harken winch on mast for spinnaker halyard Mainsail 2 Jib sails One spinnakersail covers

38' ERICSON COCKPIT AND HELM

Seating for 6-8 in cockpit Cockpit teak table Storage locker Wheel helm Raymarine Autopilot Danforth steering compass VHF radio Raymarine depth, wind and speed indicators Garmin 547 GPS

38' ERICSON ACCOMMODATIONS

Port side aft double berth in Captains quarter berth sleeps 2 Port side dinette sleeps two Starboard side settee sleeps one Forward V-Berth sleeps 2

38' ERICSON HEAD AND SHOWER

Full head and full stand up shower Vacuflush electric head Vanity and sink

38' ERICSON GALLEY AND SALON

Full galley with storageIce Box and Dry boxCountertops and sinkStoveSeating for 6 at salon tableStarboard side storage shelvesPortside Navigation station with electrical panel

38' ERICSON ENGINE AND MECHANICALS

37hp Westerbeke engine with about 1000 hoursSea water cooledRacor fuel filterOne automatic BilgeOne manual BilgeHot water heaterReverse cycle AC/Heat unit in forward V-berth locker (2017)

38' ERICSON ELECTRICAL

Two house batteries and one engine batteryOne battery switchDC panel with breaker switchesAC panel with breaker switchesProfessional Mariner 20 amp battery charger

38' ERICSON SAFETY EQUIPMENT

Navigation lightsAnchor lightSteaming lightSpreader lightsOne fire extinguisherAir hornEngine room blowersUSCG approved flares

DISCLAIMER

The Company offers the details of this vessel in good faith but cannot guarantee or warrant the accuracy of this information nor warrant the condition of the vessel. A buyer should instruct his agents, or his surveyors, to investigate such details as the buyer desires validated. This vessel is offered subject to prior sale, price change, or withdrawal without notice.

Exclusions

Owner's personal belongings.

Disclaimer

The Company offers the details of this vessel or yacht in good faith but cannot guarantee or warrant the accuracy of this information nor warrant the condition of the vessel. A buyer should instruct his representatives, agents, or his surveyors, to investigate such details as the buyer desires validated. This vessel or yacht is offered subject to prior sale, price change, or withdrawal without notice.

PHOTOS

1 Red Rover 1982 38' Ericson



IMG_3263 (edited-Pixlr) (2)



IMG_3265

IMG_3263 (edited-Pixlr)



IMG_3269 (edited-Pixlr)



IMG_3270 (edited-Pixlr)



IMG_3270



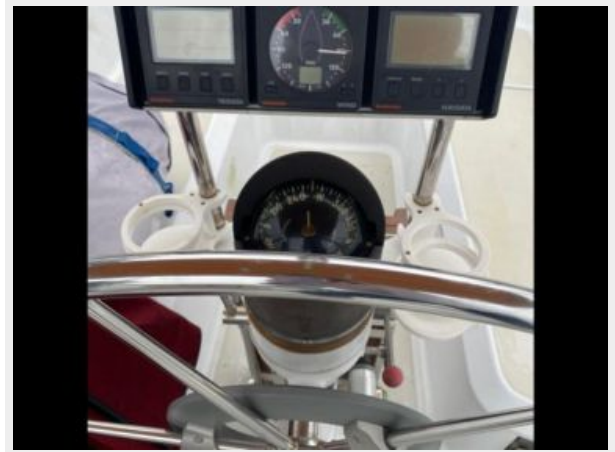
IMG_3272 (edited-Pixlr)



IMG_3273 (edited-Pixlr)



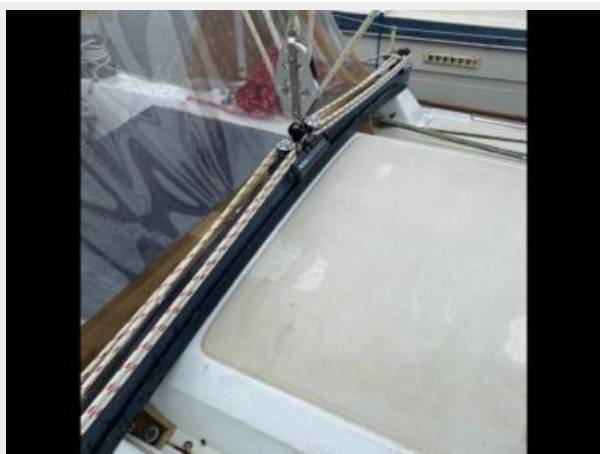
IMG_3274 (edited-Pixlr)



IMG_3276 (edited-Pixlr)



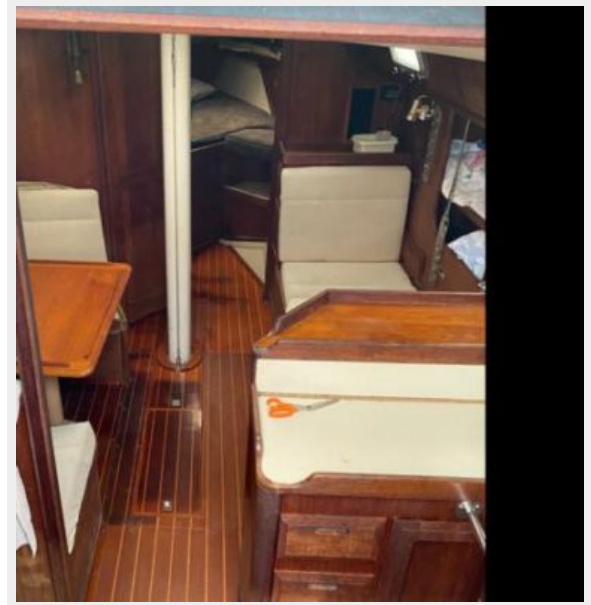
IMG_3275 (edited-Pixlr)



IMG_3277 (edited-Pixlr)



IMG_3278 (1) (edited-Pixlr)



IMG_3278



IMG_3279 (edited-Pixlr)



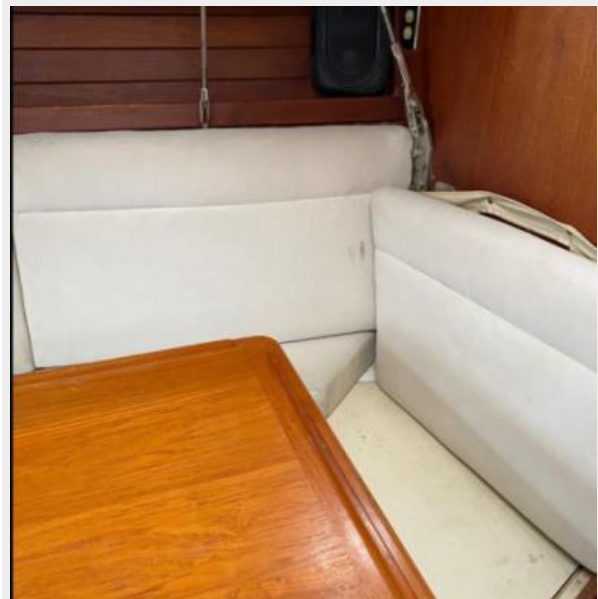
IMG_3279



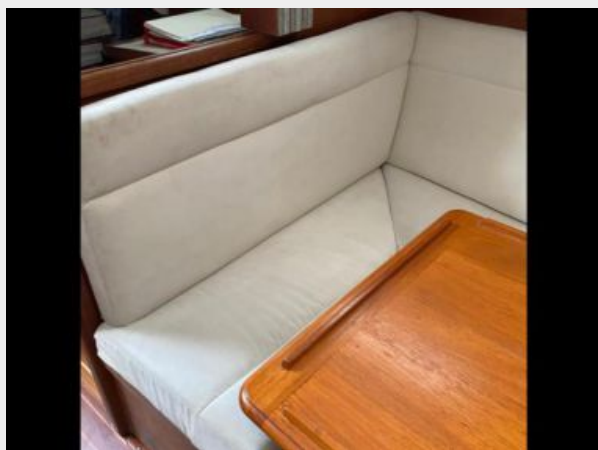
IMG_3280 (edited-Pixlr)



IMG_3283 (edited-Pixlr)



IMG_3282 (edited-Pixlr)



IMG_3284 (edited-Pixlr)



IMG_3284



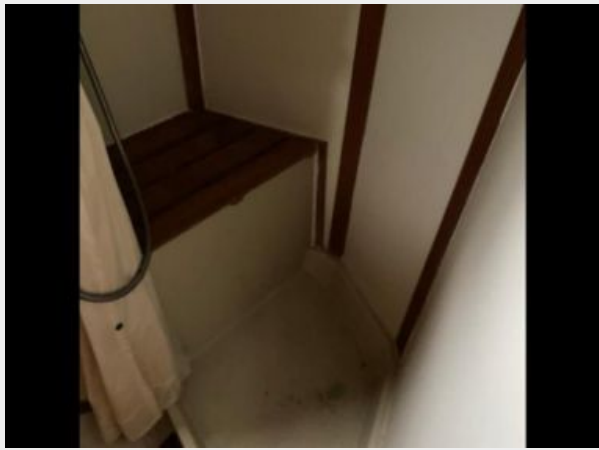
IMG_3285 (edited-Pixlr)



IMG_3286 (edited-Pixlr)



IMG_3287 (edited-Pixlr)



IMG_3288 (edited-Pixlr)



IMG_3289 (edited-Pixlr)



IMG_3290 (edited-Pixlr)



IMG_3291 (edited-Pixlr)



IMG_3292 (edited-Pixlr)



IMG_3292



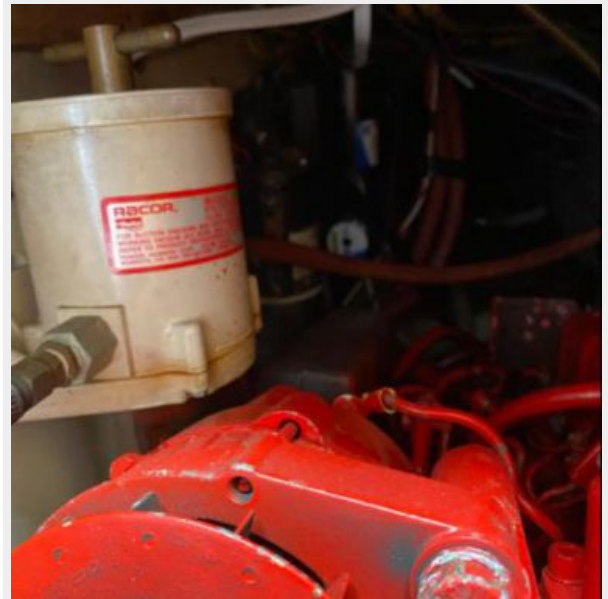
IMG_3294 (edited-Pixlr)



IMG_3295 (edited-Pixlr)



IMG_3296 (edited-Pixlr)



IMG_3297 (edited-Pixlr)



IMG_3298 (edited-Pixlr)



IMG_3299 (edited-Pixlr)



CONTACTS

Andrey Shestakov, leading yacht broker of the sales department of Shestakov Yacht Sales Inc. Shestakov Yacht Sales Inc., the official representative of the Miami/Fort Lauderdale FL headquarters.

Contact details

Email: andrey@shestakovyachtsales.com

Web: shestakovyachtsales.com/en/

Telephones

USA: +1(954)274-4435

Office hours

Monday – Saturday: **9:00 - 21:00** EDT

Sunday: **closed**

Address



Harbour Towne Marina, 850 NE 3rd St,
STE 213, Dania, FL 33004