

55 FERRETTI



Year Built: 2016

LOA: 55' (16.76m)

Model: Motor Yacht

Beam: 15.08

Price: PRICE ON APPLICATION

Our experienced yacht broker, Andrey Shestakov, will help you choose and buy a yacht that best suits your needs **55 Ferretti** — n/a from our catalogue. Presently, at Shestakov Yacht Sales Inc., we have a wide variety of yachts available on our sale's list. We also work in close contact with all the big yacht manufacturers from all over the world.

If you would like to buy a yacht **55 Ferretti** — n/a or would like help answering any questions concerning purchasing, selling or chartering a yacht, please call **+1(954)274-4435**

TABLE OF CONTENTS

TABLE OF CONTENTS	2
SPECIFICATIONS	3
Overview	3
Basic Information	4
Dimensions	4
Speed, Capacities and Weight	4
Accommodations	4
Hull and Deck Information	5
Engine Information	5
PHOTOS	6
Brochure Photo	10
Brochure Photo	10
Brochure Photo	10
Brochure Photo	10
Brochure Photo	10
Brochure Photo	10
CONTACTS	12
Contact details	12
Telephones	12
Office hours	12
Address	12

SPECIFICATIONS

Overview

2016 Ferretti 55' with factory hard top, SeaKeeper, bow thruster, loaded with options. 200 original hours and full warranty. Priced to sell, bring offers.

SPECS

Year 2016

LOA 55'2"

Beam 15'9"

Draft 4'11"

Fuel Capacity (In Gallons) 660

Water Capacity (In Gallons) 180

Standard Power 2/715-hp Cummins QSM11s

Displacement 66,050 lb.

Optional Equipment

Noteworthy Options: En suite VIP head; crew's quarters; H&B electrohydraulic swim platform; gyro stabilizer; bimini top.

Other Specifications

Generator: 7-kW Cummins Onan

The Ferretti Yachts 550 is the result of the cooperation between AYT&D, the Group's research, development and style department, and Studio Zuccon International Project. It is characterized by a brand-new hull, and equally brand-new are the layout of the engine room and that of the main deck, as well as the interior arrangement. In addition to this, special care has been devoted not only to guaranteeing maximum production efficiency and effectiveness, but also to optimizing the yacht's weight balance, thereby ensuring great performances even if small, light and low-consumption engines are installed.

The profile of the boat is characterized by sober, streamlined, slender lines, blending together refined elegance and a sporty character. The uninterrupted glazing running across the main deck further enhances the boat's rakish profile, and is complemented by a large, aerodynamic flybridge. Three large glazed surfaces - the cabins windows - can be found on both sides of the hull. Each has flush frameless fibreglass portholes resulting in very clean lines.

This yacht's interior spaces and onboard equipment allows it to be on an equal standing with much larger yachts. Many outdoor relaxation areas have been conceived: the forward dinette area, furnished with facing sofas and a table; the large sunpad on the deckhouse; and the cockpit, featuring a large aft sofa and a table. On the flybridge, the storage cabinet and the restyled, small-size pilot station instrument panel allow to extend the relaxation areas - both the sunpad and the comfortable dining area - even more.

The Group's Centro Stile has found very appealing décor solutions, adding elegance to all onboard ambiances and preserving the range's unique Made-in-Italy style and charm. The cockpit and the aft area of the salon stand out for an impressive décor consistency. Indeed, the teak flooring found in the cockpit continues indoor, in the galley and the entrance, visually and 'physically' harmonizing these different environments. This flawless continuity is also ensured by the new three-section glazed door that can be folded to starboard and concealed behind the stairs leading to the flybridge. The perfect harmony between form and content, aesthetics and functionality is completed by the ceiling panel decoration, which is the same in the salon and outdoor, creating as a sort of 'style mirror' that welcomes all guests at best. The cockpit thus becomes an extension of the interiors, which can be opened completely onto the sea on all sides.

Basic Information

Category: Motor Yacht

Model Year: 2016

Year Built: 2016

Dimensions

LOA: 55' (16.76mm)

Beam: 15.08

Speed, Capacities and Weight

Water Capacity: 188 Gallons

Fuel Capacity: 661 Gal Gallons

Accommodations

Total Cabins: 3

Total Heads: 2

Crew Heads: 1

Hull and Deck Information

Hull Material: Fiberglass

Engine Information

Engines: 2

Manufacturer: Cummins

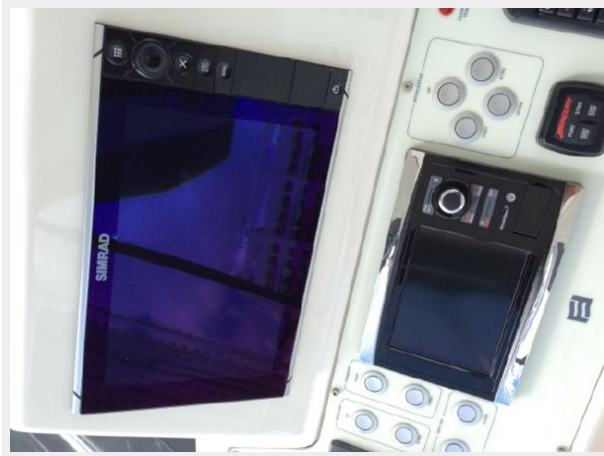
Engine Type: Inboard

Fuel Type: Diesel

PHOTOS











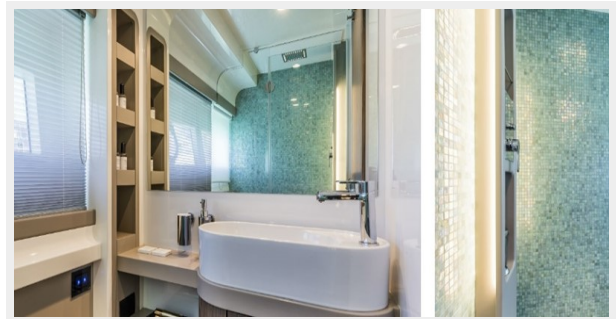
Brochure Photo



Brochure Photo



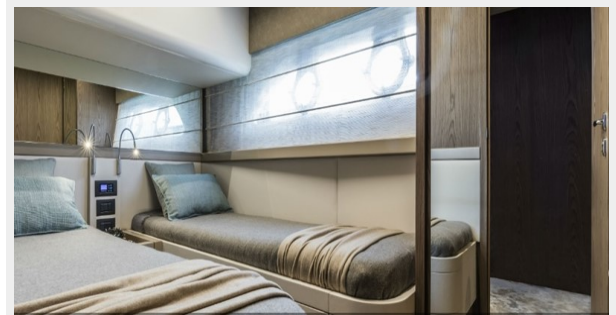
Brochure Photo



Brochure Photo



Brochure Photo



Brochure Photo





CONTACTS

Andrey Shestakov, leading yacht broker of the sales department of Shestakov Yacht Sales Inc. Shestakov Yacht Sales Inc., the official representative of the Miami/Fort Lauderdale FL headquarters.

Contact details

Email: **andrey@shestakovyachtsales.com**

Web: shestakovyachtsales.com/en/

Telephones

USA: **+1(954)274-4435**

Office hours

Monday – Saturday: **9:00 - 21:00 EDT**

Sunday: **closed**

Address



Harbour Towne Marina, 850 NE 3rd St,
STE 213, Dania, FL 33004