

## WAYFARER — BENETEAU



**Builder:** BENETEAU

**Year Built:** 2013

**Model:** Trawler Yacht

**Price:** **PRICE ON APPLICATION**

**Location:** United States

**LOA:** 45' 6" (13.87m)

**Beam:** 13' 11" (4.24m)

**Max Draft:** 3' 5" (1.04m)

**Cruise Speed:** 16 Kts. (18 MPH)

**Max Speed:** 24 Kts. (28 MPH)

Our experienced yacht broker, Andrey Shestakov, will help you choose and buy a yacht that best suits your needs **Wayfarer — BENETEAU** from our catalogue. Presently, at Shestakov Yacht Sales Inc., we have a wide variety of yachts available on our sale's list. We also work in close contact with all the big yacht manufacturers from all over the world.

If you would like to buy a yacht **Wayfarer — BENETEAU** or would like help answering any questions concerning purchasing, selling or chartering a yacht, please call **+1(954)274-4435**

# TABLE OF CONTENTS

TABLE OF CONTENTS	2
SPECIFICATIONS	5
Overview	5
Basic Information	5
Dimensions	5
Speed, Capacities and Weight	5
Accommodations	5
Hull and Deck Information	6
Engine Information	6
DETAILED INFORMATION	7
Overview	7
Exclusions	17
Disclaimer	17
PHOTOS	18
2	18
3	18
5	18
4	18
6	18
7	18
8	19
9	19
10	19
11	19
12	19
13	19
14	20
15	20

16	20
17	20
18	21
19	21
20	21
21	21
22	21
23	21
24	22
25	22
27	22
26	22
28	22
29	22
31	23
30	23
32	23
33	23
34	23
35	23
36	24
37	24
38	24
39	24
40	24
41	24
42	25
43	25
CONTACTS	26

Contact details	26
Telephones	26
Office hours	26
Address	26

# SPECIFICATIONS

## Overview

NEW LISTING! 2013 Beneteau Swift Trawler 44 The ST-44 has been the most popular of the Beneteau Swift Trawlers, with over 300 built worldwide. "WAYFARER" is a well equipped Beneteau 44 Swift Trawler that has been lovingly maintained by her owners. Call today for an appointment to see this beautiful boat that is ready to take you to new horizons on the water!

## Basic Information

**Category:** Trawler Yacht

**Model Year:** 2013

**Year Built:** 2013

**Country:** United States

## Dimensions

**LOA:** 45' 6" (13.87m)

**LWL:** 39' 11" (12.17m)

**Beam:** 13' 11" (4.24m)

**Max Draft:** 3' 5" (1.04m)

**Clearance:** 25' 6" (7.77m)

## Speed, Capacities and Weight

**Cruise Speed:** 16 Kts. (18 MPH)

**Max Speed:** 24 Kts. (28 MPH)

**Displacement:** 23957 Pounds

**Water Capacity:** 169 Gallons

**Holding Tank:** 32 Gallons

**Fuel Capacity:** 370 Gallons

## Accommodations

**Total Cabins:** 2

**Total Heads:** 2

---

## Hull and Deck Information

---

**Hull Material:** Fiberglass

**Hull Configuration:** Modified V-Hull

---

## Engine Information

---

**Engines:** 2

**Manufacturer:** Volvo Penta

**Model:** D4

**Engine Type:** Inboard

**Fuel Type:** Diesel

---

# DETAILED INFORMATION

---

## Overview

---

### WALK THROUGH

From the spacious cockpit, one enters the salon through double sliding glass doors offset to port. On starboard is a settee that converts to a pull-out double bed. On port is credenza style shelving and storage, with a flat screen TV mounted on the wall. Forward on port is the U-shaped galley and opposite that is the helm station with a side access sliding glass door. The view is unimpeded, with large glass windows ahead and to the sides.

Sleeping accommodations and heads are forward and accessed down steps between the helm and galley. To port is the guest stateroom with a large double berth, hanging and shelf storage, and lots of natural light through a large port hole with an opening center. The owner's stateroom is forward and features a centerline queen berth, hanging storage lockers to port and starboard, and abundant natural light through large side port holes and overhead hatches.

There is a large ensuite head on starboard with a separate shower room. The guest head is aft of that and opposite the guest room.

Access to the fly bridge is by steps from the starboard side of the cockpit. Forward is a large entertainment and seating area featuring a teak table to port with L-shaped settee and another settee to starboard. The helm is center with a second captain's chair to port. To starboard is an outdoor electric grill.

### SALON

All woodwork is beautiful Alpi with Mahogany stain and floors are parquet type laminate, covered

with marine carpet. The upholstery color is taupe.

- Headroom 6'6"
- Convertible sofa that folds out to queen size berth
- Dividing rail and curtains for berth
- 2 Folding armchairs
- Semi-folding, adjustable height, varnished wood saloon table
- Storage cupboards
- Cubby hole lockers
- 3 Leaf aft sliding door with black lacquered aluminium frame
- 1 Leather covered handrail overhead
- TV + DVD (DVD Player Fusion® s700)

## LOWER HELM

- Clear glass windscreen with aluminium frames in black lacquer and anti-reflective coating
- 3 Synchronized windscreen wipers
- Windscreen washer and demister
- Side windows with black lacquered frames fitted with thin wood strip blinds
- Instrument panel with engine instruments, rev counter, fuel gauge, warning lights,
- Rudder angle indicator, trim tab indicators
- Remote control for electric windlass
- Bow and stern thruster controls
- Electronic dual engine controls, with single lever option
- Leather covered dual seat pilot and copilot bench
- Removable floor step
- Sliding side door with direct access to starboard catwalk
- Leather covered overhead handrail
- 12v outlet

## GALLEY



- Headroom 6'6"
- U-shaped galley with opening window
- Corian® Sagebrush worktop with sink covers
- Twin stainless steel sinks with cold/hot pressure water
- 3 Burner propane cooktop with glass cover
- 2 Propane tanks w/fixed supply to grill on aft deck
- 130 L front opening fridge w/freezer (12 V) under helm
- Cutlery drawer
- Storage cabinets / drawers above and below the Counter tops
- Garbage bin
- Top opening 12v/110v portable Dolmitic Freezer (can be kept below aft deck)
- Convection microwave oven

## FORWARD MASTER CABIN

- Headroom: 6'4"
- Double berth (6'5" x 4'9")
- Marine mattress
- Storage under berth and each side of bed
- TV +DVD player (Fusion S700)
- Mirror on forward bulkhead
- 2 hanging lockers with lighting
- 1 Opening deck hatch with fitted screen
- 2 Opening hull portholes with blackout curtains

## ENSUITE HEAD

- Headroom: 6'6"
- Mirror with back lighting
- Cupboard
- Open stowage locker
- 1 Opening deck hatch with fitted screen
- Inset fiberglass sink
- Hot/cold pressure water faucet
- Separate shower compartment with fold-down seat over WC
- Electric Quiet flush head with fresh water flush

## DAY HEAD w/SHOWER

The day head is below across from the port side guest cabin

- Headroom: 6'6"
- Mirror with back lighting
- Cupboard
- 2 opening portholes
- Electric Quiet flush head with fresh water flush
- Inset fiberglass sink
- Hot/cold pressure water faucet with shower head

## GUEST CABIN

- Headroom: 6'6"
- Double berth ( 6'5" x 4'9")
- 4 drawers and hanging storage units
- Storage under berth
- 2 Opening hull portholes with blackout curtains

## COCKPIT

- Self-bailing cockpit
- Teak cap rails
- 2 large cockpit storage areas below deck, with w/gas lift pistons on hatches

- Hot and cold water shower with hand held spray nozzle
- Center walk thru door
- Large swim platform (11'2" x 3'3") with teak sole and folding swim ladder with hand rails, wet storage locker, Weaver fittings for dinghy
- Starboard side, midship, gunwale door
- Custom full enclosure and mosquito netting in cockpit
- Propane tank storage under flybridge ladder
- MAGMA propane grill w/dedicated propane line

## FLYBRIDGE

- \*\* Air Draft is 12' 8" with mast and boom lowered
- Stainless steel ladder to flybridge with teak steps
- Stainless steel hand rails and stanchions surrounding aft of flybridge
- White lacquered swing mast with navigation running light, radar, antennas and spotlight
- Centerline flybridge helm station
- Helm: includes navigation instruments, engine controls and gauges, Electric windlass control, Thruster and trim tab controls
- Rudder angle indicator
- Stainless steel steering wheel
- Electric horn
- Searchlight
- 12 V Power outlet
- White lacquered aluminum loading boom and electric winch
- 1 Adjustable pilot seat - Dual tone PVC Diamante Storm&Snow Cushions
- 1 Adjustable co-driver's seat to port - Dual tone PVC Diamante Storm&Snow Cushions
- Flybridge saloon to port consisting of L-shaped bench seat with integral lockers, removable teak table and Dual tone PVC Diamante Storm&Snow upholstery
- Wet bar with sink, storage and electric refrigerator
- Aft flybridge deck for dingy storage
- Weaver chocks for dinghy on flybridge
- White console cover
- Mercury brand dinghy (2017) with Yamaha 4 HP outboard motor (2019)
- Custom Bimini enclosure with privacy curtains on flybridge

## ELECTRICAL

- Electrical breaker panels 12V / 110V
- 10 - 110 V outlets (3 in lounge, 2 in the galley, 1 in owner's cabin, 1 in guest cabin, 1 in forward head, 1 in second head, 1 in engine room),
- 2 12V 140Ah service batteries
- 4 12V 50Ah engine start batteries
- 2 12V 50Ah bow thruster batteries
- 4 Additional Group 31 Gel House Batteries
- 2 Battery chargers 25 amp
- 2 12 V Power outlets
- Outside and inside lighting LED (Overhead lights, Reading lights)
- Outside lighting (Navigation lights, Mooring light with stainless steel mountings)
- 9.5KW ONAN diesel Generator 110 V / 60 Hz - with sound proof enclosure
- 3 Zone- 40,000 BTU AC w/reverse cycle heat
- REVERSO oil change system for engines and generator

## PLUMBING

- 1 Manual bilge pump (Cockpit)
- 3 Electric bilge pumps 1 of which automatic
- Water pump for pressurizing hot/cold water system
- Dockside water connection
- Reverso pump for both engines & generator
- 11 US Gal Water heater working off engine exchanger and 110 V
  - Stainless steel water tank fill
- Deck wash down pump
- 2 Rotomolded water tanks (2x 85US Gal) + 4 extra stainless-steel gray water tanks
- Drainage outlet for black water holding tank
- Holding tank 32 gal.

## ELECTRONICS

- Raymarine C-120 Chart plotter at lower helm

- Raymarine C-90 Chart plotter at upper helm
- Updated Raymarine software March 2019
- Raymarine 4G radar
- Raymarine ST70 Autopilot at both helms
- Raymarine ST70 Depth finder at both helms
- VHF Raymarine Radio telephone with AIS ( software update 2019 )
- Rogue WiFi Antenna
- Sirius XM weather system
- Navtex with dedicated GPS

## DECK EQUIPMENT

### Mooring & anchoring gear:

- 27 kgs Ultra anchor with 250 ft of chain and Quick Brand chain counter and anchor bridle
- Spare anchor: Fortress FX23 with 200 ft of line
- Stainless steel bow fitting
- Stainless steel anchor platform
- Stainless steel bow guard
- 1000 W Vertical electric windlass, upwards/ downwards movement and remote control from windlass, wheelhouse and flybridge
- 6 Aluminum mooring cleats
- Stainless steel gunwale guards
- 2 Stainless steel fairleads to aft of cockpit
- 2 Self-draining compartments with teak-slatted hatch covers

### Safety on deck:

- SS pulpit, open and surrounding cockpit up to stairs
- 1 Leather sheathed stainless steel handrail in cockpit deck head
- 1 Stainless steel handrail at entrance to port side deck Cockpit:
- Self-bailing cockpit
- Teak gunwales
- 2 Lockers in cockpit bottom gas piston assisted and lockable
- 2 Propane bottles integrated into staircase

- Hot water cockpit shower / cold water
- Cockpit access door
- Ergonomic bathing ladder with hand holds in the bathing platform
- 1 Access door to starboard side deck from cockpit with grey tinted port
- Custom full enclosure and mosquito screens in cockpit
- 2 extra cleats installed at midship
- \*\* Digital Navigation chips, paper charts, Cruising Guide Books: Turks & Caicos, Bahamas, entire East Coast of US and Florida's West Coast

## ADDITIONAL EQUIPMENT, UPGRADES

April / May 2017

- Hull sides AWLGRIP painted in May 2017
- Bottom painted

April 2018 -

- Replaced bow and stern thruster batteries
- Clean and wax hull
- Exhaust risers replaced
- Full engines and generator service (at 540 hrs)

October 2018

- Full-service, engines and generator service (at 650 hrs)

November 2018

- Replaced macerator

## March 2019

- Bottom painted (2 coats), full engine and generator service (at 713 hrs) service
- Replaced engines raw water impellers
- Clean and wax hull
- Purchased 2017 8'2" Mercury Inflatable dingy model AA2600
- Added Sirius/XM weather system

## April 2019

- Replaced auxiliary battery charger
- Replaced generator raw water impeller

## May 2019

- New house batteries, replaced both bow and stern thrusters
- Replaced engine water pumps

## May 2019

- Full-service on engines and generator (at 835 hrs)
- Clean and wax hull
- New 2019 Yamaha 5 hp 2 stroke outboard
- Replaced port engine room blower
- Props removed and serviced
- Rudder bearings replaced
- Air conditioning filter unit replaced
- Updated Raymarine navigation software,
- Barnacle barrier applied to running gear

## June 2019

- Acid washed engines and generator cooling systems

## July 2019

- Full-service engines 1000 hr service (at 946 hrs) and generator
- Replaced freshwater pump

## August 2019

- Replace generator raw water pump

## April 2020

- Full engine hr 1000 service (at 1055 hrs) and generator service
- Remove and flush engine coolers
- Replaced house batteries
- Bottom paint touched up
- Barnacle barrier applied to running gear
- Repair broken starboard saloon window blind string

## May 2020

- Clean and coat Bimini top with 330 water repellent
- Clean and wax hull

## July 2020



- Cleaned and waxed Hull
- Replace Carbon Monoxide/propane detector
- Replace port engine impeller
- Replace stern thruster circuit board
- Replace trim tab controller and helm switches
- Oil and filter changes for engines at 1177 hrs and generator
- Stern bilge pump installed
- Propellers repitched

## Exclusions

---

Owner's personal belongings.

## Disclaimer

---

The Company offers the details of this vessel or yacht in good faith but cannot guarantee or warrant the accuracy of this information nor warrant the condition of the vessel. A buyer should instruct his representatives, agents, or his surveyors, to investigate such details as the buyer desires validated. This vessel or yacht is offered subject to prior sale, price change, or withdrawal without notice.

# PHOTOS

2



3



5



4



6



7



8



9



10



11



12



13



14



15



16

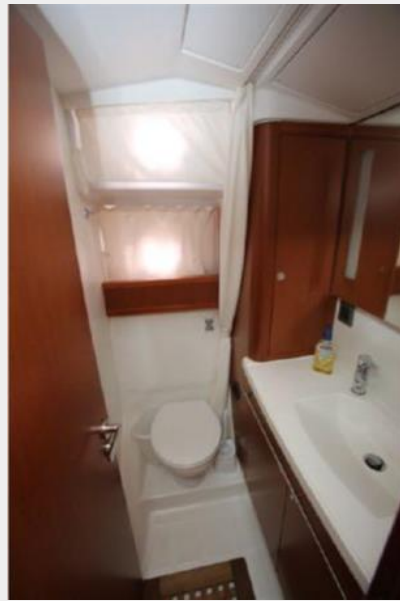


17





18



19



20



21



22



23



24



25



27



26



29



28





30



31



32



33



34



35



36



37



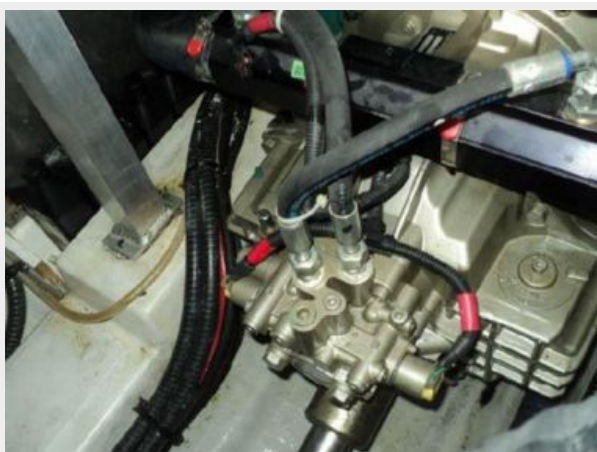
38



39



40



41





42



43



# CONTACTS

---

Andrey Shestakov, leading yacht broker of the sales department of Shestakov Yacht Sales Inc. Shestakov Yacht Sales Inc., the official representative of the Miami/Fort Lauderdale FL headquarters.

## Contact details

---

Email: **andrey@shestakovyachtsales.com**

Web: [shestakovyachtsales.com/en/](http://shestakovyachtsales.com/en/)

## Telephones

---

USA: **+1(954)274-4435**

## Office hours

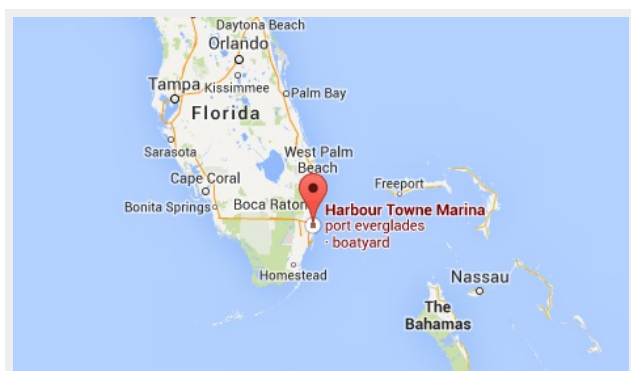
---

Monday – Saturday: **9:00 - 21:00 EDT**

Sunday: **closed**

## Address

---



Harbour Towne Marina, 850 NE 3rd St,  
STE 213, Dania, FL 33004