

FITSEA — BRISTOL YACHTS



Builder: BRISTOL YACHTS

Year Built: 1978

Model: Cruising Sailboat

Price: PRICE ON APPLICATION

Location: United States

LOA: 35' 6" (10.82m)

Beam: 10' 10" (3.30m)

Max Draft: 5' 9" (1.75m)

Our experienced yacht broker, Andrey Shestakov, will help you choose and buy a yacht that best suits your needs **FitSea — BRISTOL YACHTS** from our catalogue. Presently, at Shestakov Yacht Sales Inc., we have a wide variety of yachts available on our sale's list. We also work in close contact with all the big yacht manufacturers from all over the world.

If you would like to buy a yacht **FitSea — BRISTOL YACHTS** or would like help answering any questions concerning purchasing, selling or chartering a yacht, please call **+1(954)274-4435**

TABLE OF CONTENTS

TABLE OF CONTENTS	2
SPECIFICATIONS	4
Overview	4
Basic Information	4
Dimensions	4
Speed, Capacities and Weight	4
Accommodations	4
Hull and Deck Information	5
Engine Information	5
DETAILED INFORMATION	6
Full Description	6
Exclusions	8
Disclaimer	8
PHOTOS	9
d1	9
d3	9
d4	9
d5	9
d6	9
d7	9
d8	10
d9	10
FitSea Pic	10
FS3	10
main2	10
main5	10
int0	11
int01	11

int1	11
int02	11
int2	11
int3	11
int4	12
int5	12
int6	12
int8	12
int9	13
int10	13
int11	13
int12	13
int13	13
CONTACTS	14
Contact details	14
Telephones	14
Office hours	14
Address	14

SPECIFICATIONS

Overview

Nice clean example of this classic Ted Hood design. The Bristol 35.5 remains popular for good reason. It sails well, it looks good, it has a solid fiberglass hull, and a nicely appointed hand-crafted teak interior. Fin keel version of this model.

If you are looking for a solid, capable boat in this size range for weekending, vacationing, or long-term cruising it is hard to beat a 35.5.

Basic Information

Category: Cruising Sailboat

Sub Category: Sloop

Model Year: 1978

Year Built: 1978

Country: United States

Dimensions

LOA: 35' 6" (10.82m)

LWL: 27' 6" (8.38m)

Beam: 10' 10" (3.30m)

Max Draft: 5' 9" (1.75m)

Speed, Capacities and Weight

Displacement: 30000000 Pounds

Fuel Capacity: 31 Gallons

Accommodations

Total Cabins: 1

Hull and Deck Information

Hull Material: Fiberglass

Deck Material: Fiberglass Sandwich

Hull Configuration: Fin & Skeg

Hull Color: Blue

Hull Designer: Ted Hood

Engine Information

Engines: 1

Manufacturer: Westerbeke

Model: 30B

Engine Type: Inboard

Fuel Type: Diesel

DETAILED INFORMATION

Full Description

Electrical Systems

- (2) New Batteries 2020
- Shore power system with cord
- Battery Charger
- H/W heater, 6-gallon
- Bilge pump

Accommodations

FitSea has a varnished teak interior with a solid teak & holly cabin sole.

Starting forward:

FORWARD CABIN: features a large V-Berth with filler cushion, overhead hatch, overhead shelf and locker space port & starboard with drawers underneath. Access to the chain locker is forward of the berth. Aft to starboard is a hanging locker and aft to port is the head.

HEAD: features a Par marine toilet with holding tank & discharge Y-valve. Vanity with storage under and sink with pull-out shower. Storage lockers outboard. Teak grating floor in the shower area.

MAIN CABIN: features pull-out settees port & starboard that convert to larger berths. Shelving & locker space outboard and lockers under for added storage. Large dining table folds up against the bulkhead. The cabin port lights have custom curtains and a 12V fan on the port bulkhead aid ventilation.

NAV STATION (aft to port): Large nav desk to port with storage under and outboard.

GALLEY (aft to starboard) features:

- L-shaped galley to starboard of the companionway steps
- Single stainless steel sink with H/C pressure water
- 2-burner alcohol stove & oven
- Top-load ice box
- Ample storage

QUARTERBERTH: aft of Nav Station to port

Electronics & Navigation Equipment

- Datamarine Depth

- Datamarine Speed
- Datamarine Wind (needs repair)
- Raymarine ST4000+ autopilot (needs repair)
- Icom VHF radio
- Ritchie binnacle compass

Hull & Deck

CONSTRUCTION:

- Hull is solid fiberglass,
- Decks are balsa cored.
- Fin keel with encapsulated lead ballast
- Skeg-hung rudder with prop protected

DECK EQUIPMENT

- Single bow-roller forward
- Danforth anchor (approx. 30lbs.) with chain/3-strand rode.
- Two deck hatches
- Teak grab rails port & starboard
- Teak toerails
- Teak cockpit combings
- Dodger w/ grab bar
- Cockpit cushions
- Drink holder
- Swim ladder

Sails & Rigging

- Keel-stepped, masthead sloop rig
- Standing rigging replaced 2013, Forestay replaced 2018
- Rigid boom vang
- Doyle mainsail (2016) with new StackPack
- Doyle 150 Genoa
- Harken jib furler
- Whisker pole, with deck mount
- (2) Lewmar 46 S/T 2-sp. Primary winches
- (2) Halyard winches on mast
- Hydraulic backstay adj.

Additional Equipment

- Horseshoe buoy
- Flag & pole

- Fire extinguishers
- Manual bilge pump in cockpit locker
- Adequate fenders & dock lines

Exclusions

Owner's personal belongings.

Disclaimer

The Company offers the details of this vessel or yacht in good faith but cannot guarantee or warrant the accuracy of this information nor warrant the condition of the vessel. A buyer should instruct his representatives, agents, or his surveyors, to investigate such details as the buyer desires validated. This vessel or yacht is offered subject to prior sale, price change, or withdrawal without notice.

PHOTOS

d1



d3



d4



d5



d6



d7



d8



d9



FitSea Pic



FS3



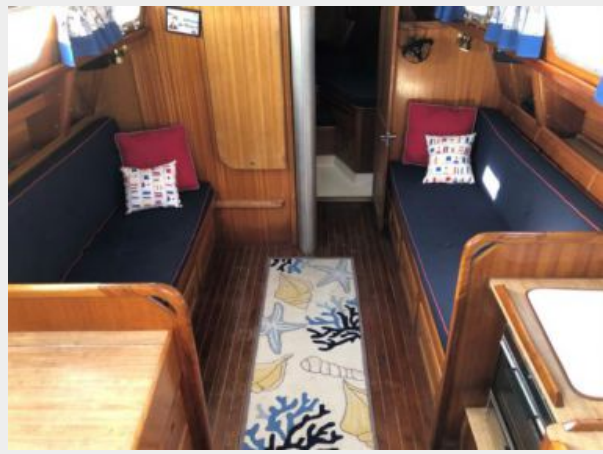
main2



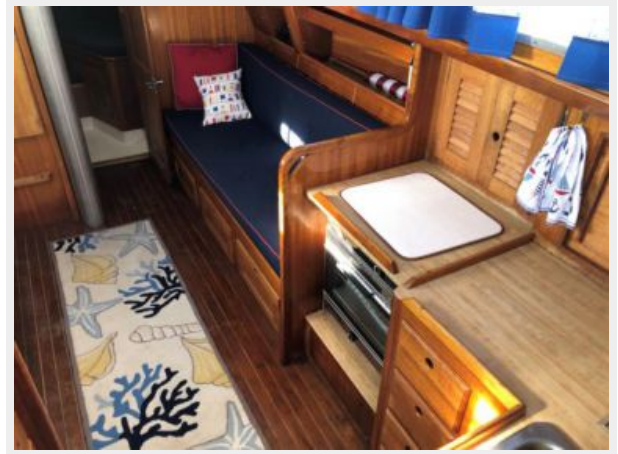
main5



int0



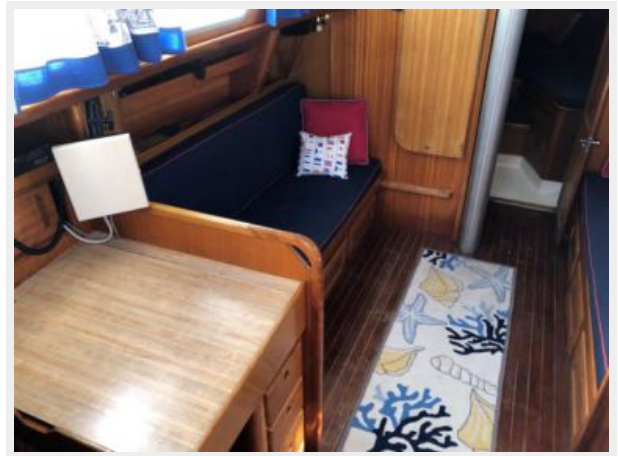
int01



int1



int02



int2



int3



int4



int5



int6



int8



int9



int10



int11



int12



int13



CONTACTS

Andrey Shestakov, leading yacht broker of the sales department of Shestakov Yacht Sales Inc. Shestakov Yacht Sales Inc., the official representative of the Miami/Fort Lauderdale FL headquarters.

Contact details

Email: andrey@shestakovyachtsales.com

Web: shestakovyachtsales.com/en/

Telephones

USA: +1(954)274-4435

Office hours

Monday – Saturday: **9:00 - 21:00** EDT

Sunday: **closed**

Address



Harbour Towne Marina, 850 NE 3rd St,
STE 213, Dania, FL 33004