

## AURORA — JOHN TRUMPY & SONS



**Судостроитель:**

JOHN TRUMPY & SONS

**Год постройки:** 1971

**Модель:** SHELBY

**Цена:** ЦЕНА ЯХТЫ ПО ЗАПРОСУ

**Местонахождение:** United States

**Длина общая:** 57' 7" (17.55m)

**Ширина:** 15' 2" (4.62m)

**Макс. осадка:** 3' 8" (1.12m)

**Крейс. скорость:** 14.5 Kts. (17 MPH)

**Макс. скорость:** 18 Kts. (21 MPH)

Купить **AURORA — JOHN TRUMPY & SONS** а также выбрать подходящую вам яхту из нашего каталога яхт вам поможет опытный яхтенный брокер Андрей Шестаков. На сегодняшний день компания **Shestakov Yacht Sales Inc.** имеет большое количество яхт в собственном списке продаж, а также тесно сотрудничает со всеми крупными яхтенными производителями по всему миру.

Для того чтобы купить яхту **AURORA — JOHN TRUMPY & SONS** а также проконсультироваться по любому вопросу связанному с покупкой, продажей, чартером яхт позвоните по телефону **+7(918)465-66-44**.

# ОГЛАВЛЕНИЕ

ОГЛАВЛЕНИЕ	2
ХАРАКТЕРИСТИКИ	4
Обзор	4
Основная информация	4
Размеры	4
Скорость, вместимость и масса	4
Размещение	5
Корпус и палуба	5
Информация о двигателе	5
ПОДРОБНОЕ ОПИСАНИЕ	6
Overview	6
Accommodations	6
Hull and Deck Equipment	7
Machinery and Electrical	8
Electronics and Navigation	8
Exclusions	9
Исключения	9
Отказ от ответственности	9
ФОТОГРАФИИ	10
Saloon	10
Saloon	10
Saloon	10
Saloon	10
Aft Deck	10
Galley	10
Wheelhouse	11
Wheelhouse	11
Master Stateroom	11

---

Master Head	11
Guest Stateroom	11
Guest Head	11
Crew and Laundry Area	12
Crew Area	12
Crew Cabin	12
Engine Room	12
Profile	12
Profile	12
Profile	13
Overhead Profile	13
Bow Profile	13
Stern Profile	13
Foredeck	13
Foredeck	13
GA 1	14
Sidedeck	14
<b>КОНТАКТЫ</b>	<b>15</b>
Контактная информация	15
Телефоны	15
Время работы	15
Адрес	15

# ХАРАКТЕРИСТИКИ

## Обзор

AURORA, Contract #444, is the fourth to the last Trumpy built and the last one built for John Trumpy himself. She has always carried her original name and is the only houseboat to be built on the highly successful 58' hull which, coupled with her Diamond series Cummins diesels, allows her to display a good turn of speed. AURORA features John Trumpy's most desirable arrangement plan and sleeps 6 in 3 staterooms.

## Основная информация

**Тип судна:** SHELBY

**Подкатегория:** Classic

**Модельный год:** 1971

**Год постройки:** 1971

**Страна:** United States

**Номер регистрации в береговой охране:** 536358

## Размеры

**Длина общая:** 57' 7" (17.55m)

**Ширина:** 15' 2" (4.62m)

**Макс. осадка:** 3' 8" (1.12m)

**Длина привального бруса:** 57' 7" (17.55m)

## Скорость, вместимость и масса

**Крейс. скорость:** 14.5 Kts. (17 MPH)

**Макс. скорость:** 18 Kts. (21 MPH)

**Водоизмещение:** 74000 Pounds

**Вместимость воды:** 250 Gallons

**Вместимость сточного бака:** 118 Gallons **Объем топливного бака:** 600 Gallons

## Размещение

---

**Всего кают:** 3

**Всего коек:** 4

**Спальные места:** 6

**Всего ком. состава:** 2

**Каюты экипажа:** 1

**Койки экипажа:** 1

**Спальных мест экипажа:** 2

**Комм. состав экипажа:** 1

## Корпус и палуба

---

**Материал корпуса:** Wood

**Материал палубы:** Wood

**Комплектация корпуса:** Full Displacement

**Цвет корпуса:** White

**Отделка корпуса:** Stainless Steel

**Дизайнер корпуса:** Fred Geiger

**Дизайнер экстерьера:** Fred Geiger

**Дизайнер интерьера:** Fred Geiger

## Информация о двигателе

---

**Двигатели:** 2

**Производитель:** Cummins

**Модель:** Diamond Edition

**Тип двигателя:** Inboard

**Тип топлива:** Diesel

# ПОДРОБНОЕ ОПИСАНИЕ

## Overview

AURORA, Contract #444, is the fourth to the last Trumpy built and the last one built for John Trumpy himself. She has always carried her original name and is the only houseboat to be built on the highly successful 58' hull which, coupled with her Diamond series Cummins diesels, allows her to display a good turn of speed. Her 2nd owner was the State of Maryland for 5 years, followed by four private owners, inclusive of her present; all have cared for her in first class fashion. The expression "ready to go" is widely used in brokerage listings, but it should be emphasized with AURORA...she truly is ready to go. Those inspecting her will find her in good mechanical and cosmetic condition, with updated systems, and ready to go.

## Accommodations

AURORA features John Trumpy's most desirable arrangement plan. Wheelhouse forward, followed by a full beam galley, salon, and aft deck that can be open to the breeze or enclosed and climate controlled. Crew area is forward on the lower level followed by the engine room, guest cabin and head, and finally a full beam master with en-suite head. Galley:• Frigidaire 4-burner glass top electric stove w/oven• Frigidaire compact dishwasher• Frigidaire full size refrigerator/freezer w/ice and water dispenser (2012)• Sharp Carousel microwave oven• Corian countertops• Large sink with spray handle faucet• Very good storage for food stuffs, plates, glasses, etc...• Parquet sole in beautiful shapeSalon:• Beautifully finished with Butternut paneling• Custom secretary starboard side aft made of Paduak and Coca Bola woods (2008)• Custom library/bookcase port side aft made of Paduak and Coca Bola woods (2008)• L-shaped sofa w/storage under and Sunbrella upholstery• Beige lined Sunbrella curtains• (2) Original Trumpy arm chairs w/beige Sunbrella fabric• (2) Opening side windows to allow for fresh air• Easy chair• Sony stereo CD/DVD player with speakers• Flat Screen TV• Large storage/hanging lockerGuest Cabin:• Twin fore and aft berths w/bureau in between• Drawer and cabinet storage under bunks• (2) Reading lamps• (2) Opening ports• Cedar lined hanging locker• Custom fitted carpetGuest Head / Day Head:• Large stall shower• Opening port• Black Palm countertop w/brushed stainless sink• Parquet sole• Raritan freshwater flush head• Large mirror and good amounts of storageMaster Cabin:• Custom athwart ship queen berth with storage under (2009) replaced the original twin separate berths• Custom ribboned Mahogany night stands w/drawers• (2) Swivel reading lamps• Set of drawers on port side w/ribbon Mahogany top• Custom reading nook w/flip up foot rest• (4) Opening ports w/blinds• Emergency escape and Lazzarett access• Flat screen TV• DVD player• Large Cedar lined hanging lockers• Custom fitted carpet sole• En-suite head w/large stall shower• Black palm counter top w/brushed stainless wash basin• Large oval mirror w/black palm trim• Raritan fresh water flush headCrew / Guest Accommodation:• En-suite head forward w/shower and access to anchor locker• Manual flush saltwater toilet• Wash basin w/vanity• (2) Opening ports• Double upper berth w/reading lamp• Flat screen TV• Overhead hatch access/ventilation hatch with ladder• Great locker and drawer storage• (2) Large

hanging lockers• Cleverly designed desk/work station integrated into what was the lower crew berth• (3) Opening ports• Original small white Trumpy chair• A 2nd double upper berth w/storage under is aft where the original crew dinette used to be• BOSCH stackable washer and dryer• Washbasin and laundry work area with great storage• Carpeted sole• Companionway ladder access to the wheelhouse

## Hull and Deck Equipment

---

- Fiberglass covered painted Matterhorn White side decks, bow, and boat deck
- Fully enclosed aft deck with wing doors
- Tinted hard Lexan side aft deck windows (2010)
- New zippers on soft isinglass enclosure (2012)
- Privacy screens for all windows (2010)
- Original Trumpy aft bench seat w/Sunbrella upholstery
- Custom aft deck high/low table with leafs
- (4) Aft deck arm chairs
- Buffet/Bar area w/sink and storage
- Folding mast on roof/boat deck w/owner absent and meal light
- Low profile 600lb davit for lifting and lowering a tender
- Lewmar polished stainless BRUCE 66lb anchor
- Custom polished stainless removable anchor roller and sprit
- Ideal windlass w/deck control fully rebuilt and re-chromed (2011)
- All chrome on the entire boat has been re-chromed during the past 5 years
- Large forward access hatch to crew area w/circular bronzed port light
- Varnish on the entire vessel touched up (December 2020)
- Salt water wash down spigot on foredeck
- Air compressor fitting and hose within bow seating settee for fenders, etc...
- (2) 8' long by 18" diameter military grade inflatable fenders
- (3) Medium ball fenders
- (2) Large ball fenders
- (3) 34" tubular hanging fenders
- (7) 3/4" Black triple braid nylon lines
- (2) 50 Amp shore power points
- (3) 50 Amp 50' long shore power cords
- (2) 50 Amp 20' Long shore power cords
- (12) Adult life Jackets
- (1) Kapok original Trumpy life jackets
- (3) Children's life jackets
- (2) Spare 4-blade props
- All USCG required flairs, safety package, etc...
- (11) Fire extinguishers throughout vessel
- Boat hook
- Aluminum folding boarding ladder that reaches the water line

- Fixed Marquipt 3 tread boarding stairs w/railing
- Adjustable 2nd set of Marquipt stars
- Original mahogany boarding ladder that folds down to the water line
- Hull is constructed of double planked Mahogany (3/4" outer 3/8" inner) with 5200 between
- Entire bottom replaced (1998)
- Bottom was wooded (2011)
- Fresh bottom Paint and Haul (December 2020)
- Cutlass bearings replaced (2020)

## Machinery and Electrical

---

- (2) Cummins 6 Cylinder Diamond Edition 420hp Diesel Main Engines
- Walker AirSeps installed on Main Engines (2012)
- Rebuilt fuel pump on port main engine (2020)
- Glendenning engine synchronizer
- (2) Twin RACOR 2000 Series Fuel Filters for Main Engines
- 20KW Onan Generator w/Sound shield
- 8KW Onan Generator w/Sound shield
- (2) RACOR Fuel Filters for Generators
- (2) 8D Main Engine Batteries
- (2) Series 56 Batteries for Generators
- 110/220 Volt AC system
- 110V Florescent Engine Room Lighting (2009)
- 110V Bilge Pump
- (4) Automatic 12V Bilge Pumps
- 200lb Compressed Air Tank
- Freshwater Accumulator tank
- Wayne 1/2hp Fresh Water Pump (2020)
- Sentry 12v/30amp battery charger
- Hull electrolysis monitor
- Galvanic Isolator
- Overboard discharge pump for holding tank, lockable with key
- Leaded foam insulation on Engine Room overhead, forward and aft bulkheads, and hull sides
- Tank tender fuel and water gauge
- (7) Cruisair Air Conditioning Compressors all in good shape Saloon 16,000btu Wheelhouse 16,000btu Aft Deck 16,000btu Galley 12,000btu Master 12,000btu (2020) Guest 5,000btu Crew 5,000btu

## Electronics and Navigation

---

- AIS transponder (2008)• Loud Hailer• Furuno Radar• Ritchie Compass• Northstar 61001 GPS•



Garmin Map 478 GPS• Robertson AP-22 Autopilot w/wired remote• Sandpiper III Depth Sounder• ICOM hand held VHF Radio• Raritan Rudder angle indicator• Datamarine DART speed and distance logs• (2) Standard Quest Horizon VHF Radios• Standard Horizon Hailer• Bennett trim tab controls• Dual single lever Morse controls• Ships Bell• Chelsea Ships Clock and Barometer• (3) Electric windshield wipers• Ships air horn• USCG approved navigation lights• 6 Spoke stainless ships wheel

---

## Exclusions

---

Artwork and personal photos

---

## Исключения

---

При продаже яхты исключаются личные вещи владельца.

---

## Отказ от ответственности

---

Компания предоставляет описание судна или яхты добросовестно, но не может гарантировать точность этой информации, а также не ручается за техническое состояние. Покупатель должен проинструктировать своих агентов или оценщиков исследовать представленную информацию более подробно, по собственному желанию. Продажа судна или яхты, изменение цены или снятие с продажи будет происходить без предварительного уведомления.

# ФОТОГРАФИИ

Saloon



Saloon



Saloon



Saloon



Aft Deck



Galley



**Wheelhouse**



**Wheelhouse**



**Master Stateroom**



**Master Head**



**Guest Stateroom**



**Guest Head**





**Crew and Laundry Area**



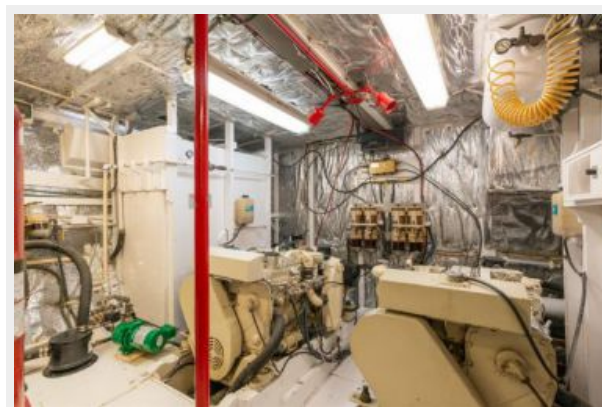
**Crew Area**



**Crew Cabin**



**Engine Room**



**Profile**



**Profile**



**Profile**



**Overhead Profile**



**Bow Profile**



**Stern Profile**



**Foredeck**



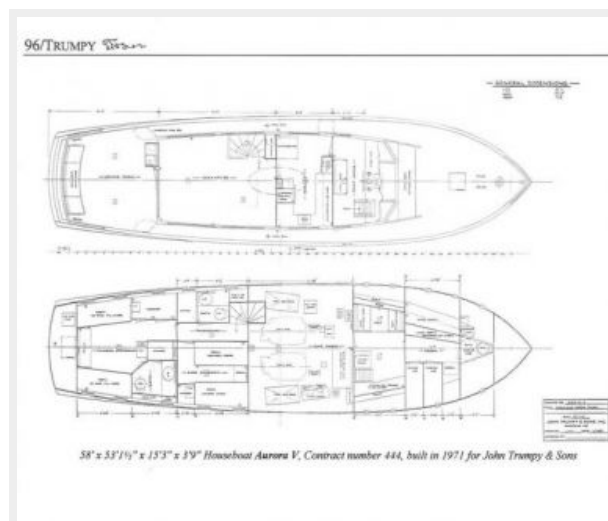
**Foredeck**



## Siddeck



## GA 1





# КОНТАКТЫ

---

Андрей Шестаков (Andrey Shestakov) – ведущий яхтенный брокер отдела продаж яхт и судов компании Shestakov Yacht Sales Inc. Официальный представитель Shestakov Yacht Sales Inc. для русскоговорящих клиентов в центральном офисе компании в Майами/Форт Лодердейл/Флорида/США.

## Контактная информация

---

Email: [andrey@shestakovyachtsales.com](mailto:andrey@shestakovyachtsales.com)

Web: [shestakovyachtsales.com](http://shestakovyachtsales.com)

## Телефоны

---

Краснодарский край: **+7(918)465-66-44**

США, Майами, Флорида: **+1(954)274-4435**

## Время работы

---

Понедельник – Суббота: **9:00 - 21:00**  
EDT

Воскресенье: **Закрето**

## Адрес

---



Harbour Towne Marina, 850 NE 3rd St,  
STE 213, Dania, FL 33004