

## 50M PRIME MEGAYACHT PLATFORM PRISM



**Year Built:** 2021

**Model:** Motor Yacht

**Price:** PRICE ON APPLICATION

**LOA:** 162' (49.38mm)

**Beam:** 28.75

**Max Draft:** 7' 1" (2.16mm)

**Cruise Speed:** 13 Knots Kts. (15 MPH)

**Max Speed:** 16 Knots Kts. (18 MPH)

Our experienced yacht broker, Andrey Shestakov, will help you choose and buy a yacht that best suits your needs 50m PRIME Megayacht Platform Prisma — n/a from our catalogue. Presently, at Shestakov Yacht Sales Inc., we have a wide variety of yachts available on our sale's list. We also work in close contact with all the big yacht manufacturers from all over the world.

If you would like to buy a yacht 50m PRIME Megayacht Platform Prisma — n/a or would like help answering any questions concerning purchasing, selling or chartering a yacht, please call +1(954)274-4435

---

# TABLE OF CONTENTS

---

TABLE OF CONTENTS	2
SPECIFICATIONS	3
Overview	3
Basic Information	3
Dimensions	3
Speed, Capacities and Weight	3
Accommodations	4
Hull and Deck Information	4
Engine Information	4
PHOTOS	5
CONTACTS	7
Contact details	7
Telephones	7
Office hours	7
Address	7

# SPECIFICATIONS

---

## Overview

---

### The PRIME Megayacht Platform

#### The Future of Semi-Custom is here

At PRIME, our belief is that those who invest time and energy into building a megayacht should be rewarded with a creation which represents his or her distinctive style. Much like a custom home builder, PRIME offers you the sophistication of a custom build with the time- and cost-savings benefits of a semi-production series. Choose from The Collection (PRISMA, CALOU, DREAM, NEXT), or take advantage of PRIME's flexibility to create your own masterpiece. Create with Confidence, while benefitting from a thoroughly engineered platform designed by an elite team of naval architects, master builders and interior designers.

## Basic Information

---

**Category:** Motor Yacht

**Sub Category:** Mega Yacht

**Model Year:** 2023

**Year Built:** 2021

## Dimensions

---

**LOA:** 162' (49.38mm)

**Beam:** 28.75

**Max Draft:** 7' 1" (2.16mm)

## Speed, Capacities and Weight

---

**Cruise Speed:** 13 Knots Kts. (15 MPH)

**Max Speed:** 16 Knots Kts. (18 MPH)

**Gross Tonnage:** 499 Pounds

**Water Capacity:** 12000 Gallons

**Fuel Capacity:** 13208.6 Gal Gallons

---

## Accommodations

---

**Total Cabins:** 5

**Sleeps:** 10

**Total Heads:** 5

**Crew Cabin:** 10

---

## Hull and Deck Information

---

**Hull Material:** Aluminum

**Hull Designer:** Azure Yacht Design

**Exterior Designer:** Luiz de Basto

---

## Engine Information

---

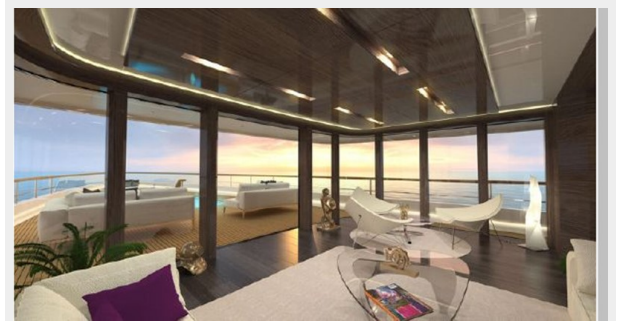
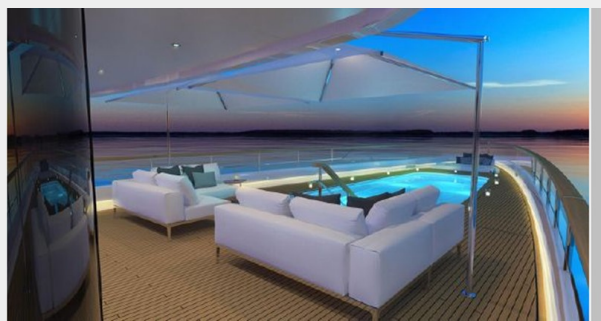
**Engines:** 2

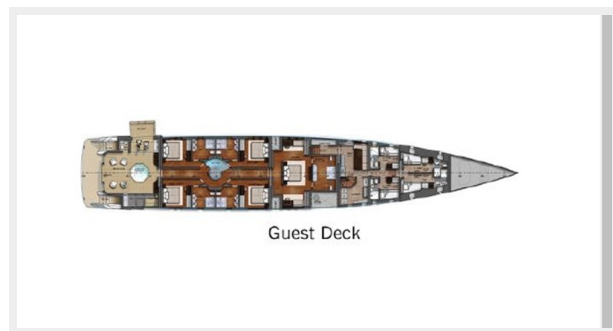
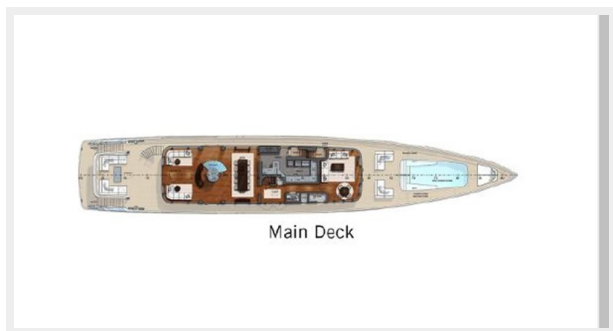
**Manufacturer:** MTU

**Engine Type:** Inboard

**Fuel Type:** Diesel

# PHOTOS





# CONTACTS

---

Andrey Shestakov, leading yacht broker of the sales department of Shestakov Yacht Sales Inc. Shestakov Yacht Sales Inc., the official representative of the Miami/Fort Lauderdale FL headquarters.

## Contact details

---

Email: [andrey@shestakovyachtsales.com](mailto:andrey@shestakovyachtsales.com)

Web: [shestakovyachtsales.com/en/](http://shestakovyachtsales.com/en/)

## Telephones

---

USA: +1(954)274-4435

## Office hours

---

Monday – Saturday: **9:00 - 21:00** EDT

Sunday: **closed**

## Address

---



Harbour Towne Marina, 850 NE 3rd St,  
STE 213, Dania, FL 33004