

DELTA 33 OPEN — DELTA POWERBOATS



Builder: DELTA POWERBOATS

Year Built: 2021

Model: Cruising Yacht

Price: PRICE ON APPLICATION

Location: United States

LOA: 35' (10.67mm)

Beam: 10.25

Max Draft: 3' 1" (0.94mm)

Cruise Speed: 30 Knots Kts. (35 MPH)

Max Speed: 43 Knots Kts. (49 MPH)

Our experienced yacht broker, Andrey Shestakov, will help you choose and buy a yacht that best suits your needs **Delta 33 Open — DELTA POWERBOATS** from our catalogue. Presently, at **Shestakov Yacht Sales Inc.**, we have a wide variety of yachts available on our sale's list. We also work in close contact with all the big yacht manufacturers from all over the world.

If you would like to buy a yacht **Delta 33 Open — DELTA POWERBOATS** or would like help answering any questions concerning purchasing, selling or chartering a yacht, please call **+1(954)274-4435**

TABLE OF CONTENTS

TABLE OF CONTENTS	2
SPECIFICATIONS	3
Overview	3
Basic Information	3
Dimensions	3
Speed, Capacities and Weight	3
Accommodations	4
Hull and Deck Information	4
Engine Information	4
PHOTOS	5
CONTACTS	7
Contact details	7
Telephones	7
Office hours	7
Address	7

SPECIFICATIONS

Overview

DELTA 33 OPENThe Delta 33 Open is a Scandinavian-built carbon fiber daycruiser with open walkaround decks perfectly suited for entertaining, swimming and sunbathing. An elevated foredeck area allows for a cabin and head below deck, and a complete galley and convertible dining area on the main deck. Distinctly Scandinavian touches are found throughout, including the convertible settee on the aft deck that transforms into a spacious lounging area.

*Construction financing available!**Price excludes U.S. shipping and duties.

Basic Information

Category: Cruising Yacht

Sub Category: Open Yacht

Model Year: 2022

Year Built: 2021

Country: United States

Dimensions

LOA: 35' (10.67mm)

Beam: 10.25

Max Draft: 3' 1" (0.94mm)

Speed, Capacities and Weight

Cruise Speed: 30 Knots Kts. (35 MPH) **Max Speed:** 43 Knots Kts. (49 MPH)

Water Capacity: 39 Gallons

Holding Tank: 15 Gal Gallons

Fuel Capacity: 145 Gal Gallons

Accommodations

Total Cabins: 2

Sleeps: 4

Total Heads: 1

Hull and Deck Information

Hull Material: Other

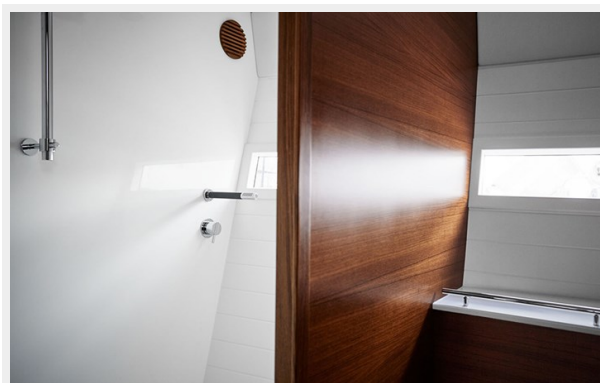
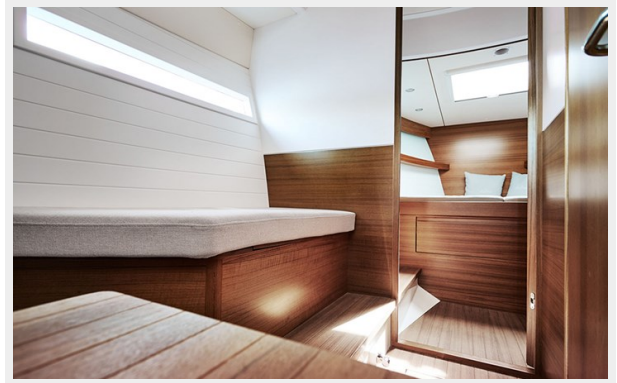
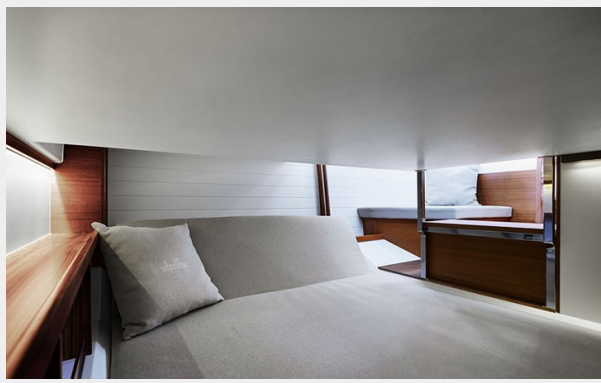
Hull Designer: Ted Mannerfelt

Engine Information

Engines: 1

PHOTOS





CONTACTS

Andrey Shestakov, leading yacht broker of the sales department of Shestakov Yacht Sales Inc. Shestakov Yacht Sales Inc., the official representative of the Miami/Fort Lauderdale FL headquarters.

Contact details

Email: **andrey@shestakovyachtsales.com**

Web: shestakovyachtsales.com/en/

Telephones

USA: **+1(954)274-4435**

Office hours

Monday – Saturday: **9:00 - 21:00** EDT

Sunday: **closed**

Address



Harbour Towne Marina, 850 NE 3rd St, STE 213, Dania, FL 33004