

LITTLE RED — GRAND BANKS



Судостроитель: GRAND BANKS

Год постройки: 1984

Модель: Моторная яхта

Цена: ЦЕНА ЯХТЫ ПО ЗАПРОСУ

Местонахождение: United States

Длина общая: 49' 0" (14.94m)

Ширина: 15' 5" (4.70m)

Макс. осадка: 5' 2" (1.57m)

Крейс. скорость: 10 Kts. (12 MPH)

Купить **Little Red — GRAND BANKS** а также выбрать подходящую вам яхту из нашего каталога яхт вам поможет опытный яхтенный брокер Андрей Шестаков. На сегодняшний день компания **Shestakov Yacht Sales Inc.** имеет большое количество яхт в собственном списке продаж, а также тесно сотрудничает со всеми крупными яхтенными производителями по всему миру.

Для того чтобы купить яхту **Little Red — GRAND BANKS** а также проконсультироваться по любому вопросу связанному с покупкой, продажей, чартером яхт позвоните по телефону **+7(918)465-66-44**.

ОГЛАВЛЕНИЕ

ОГЛАВЛЕНИЕ	2
ХАРАКТЕРИСТИКИ	8
Обзор	8
Основная информация	8
Размеры	8
Скорость, вместимость и масса	8
Размещение	9
Корпус и палуба	9
Информация о двигателе	9
ПОДРОБНОЕ ОПИСАНИЕ	10
MAIN DESCRIPTION	10
LAYOUT	10
Galley and Laundry	11
Electronics and Navigation Equipment	11
ELECTRICAL	12
Deck Equipment	12
Mechanical Equipment	14
Other Features, Construction, and Details of Overh	14
Salesperson's Comments	14
EXCLUSIONS	15
DISCLAIMER	15
Исключения	15
Отказ от ответственности	15
ФОТОГРАФИИ	16
1.2	16
2 Little Red 1984 Grand Banks 49 MY Starboard Profile	16
2.1 Little Red 1984 Grand Banks 49 MY stb view	16
3 Little Red 1984 Grand Banks 49 MY Forward Deck 1	17

2.2 Little Red 1984 Grand Banks 49 MY stern view 1	17
3.1 Little Red 1984 Grand Banks 49 MY Bow Pulpit	17
4 Little Red 1984 Grand Banks 49 MY Forward Deck 2	17
5 Little Red 1984 Grand Banks 49 MY Forward Deck 3	18
6 Little Red 1984 Grand Banks 49 MY port side deck	18
7 Little Red 1984 Grand Banks 49 MY Starboard Side Deck	18
7.1 Little Red 1984 Grand Banks 49 MY deck fill	18
8 Little Red 1984 Grand Banks 49 MY aft deck 1	19
8.1 Little Red 1984 Grand Banks 49 MY	19
9 Little Red 1984 Grand Banks 49 MY Aft deck to Flybridge	19
10 Little Red 1984 Grand Banks 49 MY Flybridge 1	19
11 Little Red 1984 Grand Banks 49 MY Flybridge 1.2	20
12 Little Red 1984 Grand Banks 49 MY Flybridge 1.1	20
13 Little Red 1984 Grand Banks 49 MY Flybridge 1.3	20
13.1 Little Red 1984 Grand Banks 49 MY upper helm autopilot	20
13.2 Little Red 1984 Grand Banks 49 MY upper helm bow thruster	21
13.3 Little Red 1984 Grand Banks 49 MY upper helm garmin 1	21
13.4 Little Red 1984 Grand Banks 49 MY upper helm garmin 2	21
13.5 Little Red 1984 Grand Banks 49 MY upper helm garmin 3	21
13.6 Little Red 1984 Grand Banks 49 MY upper helm ignition switches	22
13.7 Little Red 1984 Grand Banks 49 MY upper helm rudder indicator	22
15 Little Red 1984 Grand Banks 49 MY Flybridge 3	22
14 Little Red 1984 Grand Banks 49 MY Flybridge 2	22
16 Little Red 1984 Grand Banks 49 MY Flybridge 4	23
17 Little Red 1984 Grand Banks 49 MY hinged mast 1	23
19 Little Red 1984 Grand Banks 49 MY Salon 1	23
18 Little Red 1984 Grand Banks 49 MY Hinged mast 2	23
20 Little Red 1984 Grand Banks 49 MY Salon 2	24
21 Little Red 1984 Grand Banks 49 MY Salon 3	24

23 Little Red 1984 Grand Banks 49 MY Salon 5	24
22 Little Red 1984 Grand Banks 49 MY Salon 4	24
24 Little Red 1984 Grand Banks 49 MY Salon 6	25
25 Little Red 1984 Grand Banks 49 MY Salon 7	25
26 Little Red 1984 Grand Banks 49 MY Salon 8	25
27 Little Red 1984 Grand Banks 49 MY Salon 9	25
28 Little Red 1984 Grand Banks 49 MY Salon 10	26
29 Little Red 1984 Grand Banks 49 MY Salon from side entry door	26
29.1 Little Red 1984 Grand Banks 49 MY dinette	26
30 Little Red 1984 Grand Banks 49 MY Salon Pano 1	26
31 Little Red 1984 Grand Banks 49 MY side entry door	27
31 Little Red 1984 Grand Banks 49 MY Salon Pano 2	27
32 Little Red 1984 Grand Banks 49 MY lower helm 1	27
33 Little Red 1984 Grand Banks 49 MY lower helm 2	27
34 Little Red 1984 Grand Banks 49 MY Lower Helm Bow Thruster	28
35 Little Red 1984 Grand Banks 49 MY Lower Helm FloScan	28
37 Little Red 1984 Grand Banks 49 MY Lower Helm Garmin 2	28
36 Little Red 1984 Grand Banks 49 MY Lower Helm Garmin 1	28
39 Little Red 1984 Grand Banks 49 MY lower helm warning lights	29
38 Little Red 1984 Grand Banks 49 MY Lower Helm VHF	29
41 Little Red 1984 Grand Banks 49 MY Liquor Cabinet 1	29
40 Little Red 1984 Grand Banks 49 MY Lower Helm	29
42 Little Red 1984 Grand Banks 49 MY liquor cabinet 2	30
43 Little Red 1984 Grand Banks 49 MY Galley 8	30
44 Little Red 1984 Grand Banks 49 MY Galley 1	30
44.1 Little Red 1984 Grand Banks 49 MY refrigerator power control 1	30
45 Little Red 1984 Grand Banks 49 MY Galley 2	31
45.1 Little Red 1984 Grand Banks 49 MY Washer Dryer Combo	31
46 Little Red 1984 Grand Banks 49 MY Galley 3	31

47 Little Red 1984 Grand Banks 49 MY Galley 4	31
48 Little Red 1984 Grand Banks 49 MY Galley 5	32
49 Little Red 1984 Grand Banks 49 MY Galley 6	32
50 Little Red 1984 Grand Banks 49 MY Galley 7	32
51 Little Red 1984 Grand Banks 49 MY Fwd Cabin 1	32
53 Little Red 1984 Grand Banks 49 MY Fwd Cabin 3	33
52 Little Red 1984 Grand Banks 49 MY Fwd Cabin 2	33
54 Little Red 1984 Grand Banks 49 MY Fwd Head 1	33
55 Little Red 1984 Grand Banks 49 MY fwd head 2	33
57 Little Red 1984 Grand Banks 49 MY Fwd shower room 1	34
56 Little Red 1984 Grand Banks 49 MY Fwd Head 3	34
58 Little Red 1984 Grand Banks 49 MY Fwd Shower Room 2	34
59 Little Red 1984 Grand Banks 49 MY Office 1	34
60 Little Red 1984 Grand Banks 49 MY office 2	35
61 Little Red 1984 Grand Banks 49 MY Aft Cabin 1	35
62 Little Red 1984 Grand Banks 49 MY aft cabin 2	35
63 Little Red 1984 Grand Banks 49 MY aft cabin 3	35
64 Little Red 1984 Grand Banks 49 MY aft cabin 4	36
65 Little Red 1984 Grand Banks 49 MY aft cabin 5	36
67 Little Red 1984 Grand Banks 49 MY aft head 1	36
66 Little Red 1984 Grand Banks 49 MY aft cabin 6	36
68 Little Red 1984 Grand Banks 49 MY Aft Bath tub	37
69 Little Red 1984 Grand Banks 49 engine room access	37
70 Little Red 1984 Grand Banks 49 MY Engine Room Access 1	37
71 Little Red 1984 Grand Banks 49 MY Engine Room 1	37
73 Little Red 1984 Grand Banks 49 MY Engine Room 3	38
72 Little Red 1984 Grand Banks 49 MY Engine Room 2	38
74 Little Red 1984 Grand Banks 49 MY Engine Room 4	38
76 Little Red 1984 Grand Banks 49 MY Engine Room 6	38

77 Little Red 1984 Grand Banks 49 MY Engine Room 7	39
78 Little Red 1984 Grand Banks 49 MY Engine Room 8	39
79 Little Red 1984 Grand Banks 49 MY Engine Room 9	39
80 Little Red 1984 Grand Banks 49 MY Engine Room 10	39
81 Little Red 1984 Grand Banks 49 MY Engine room 11	40
82 Little Red 1984 Grand Banks 49 MY Engine Room 12	40
84 Little Red 1984 Grand Banks 49 MY Engine Room 14	40
83 Little Red 1984 Grand Banks 49 MY Engine Room 13	40
85 Little Red 1984 Grand Banks 49 MY Engine room 15	41
86 Little Red 1984 Grand Banks 49 MY Engine Room 16	41
87 Little Red 1984 Grand Banks 49 MY Engine Room 17	41
88 Little Red 1984 Grand Banks 49 MY Engine Room 18	41
89 Little Red 1984 Grand Banks 49 MY Engine Room 19	42
90 Little Red 1984 Grand Banks 49 MY Engine Room 20	42
91 Little Red 1984 Grand Banks 49 MY Engine Room 21	42
92 Little Red 1984 Grand Banks 49 MY fuel manifold	42
92.1 Little Red 1984 Grand Banks 49 MY Battery Switch	43
93 Little Red 1984 Grand Banks 49 MY generator 1	43
94 Little Red 1984 Grand Banks 49 MY generator controls	43
95 Little Red 1984 Grand Banks 49 MY generator hour meter	43
97 Little Red 1984 Grand Banks 49 MY AC Panel 1	44
96 Little Red 1984 Grand Banks 49 MY Generator	44
98 Little Red 1984 Grand Banks 49 MY AC Panel 2	44
99 Little Red 1984 Grand Banks 49 MY DC Panel 1	44
100 Little Red 1984 Grand Banks 49 MY DC panel 2	45
101 Little Red 1984 Grand Banks 49 MY Central Vac	45
102 Little Red 1984 Grand Banks 49 MY aft power hook up 1	45
103 Little Red 1984 Grand Banks 49 MY plaque	45
104 Little Red 1984 Grand Banks 49 MY insignia	46

КОНТАКТЫ	47
-----	-----
Контактная информация	47
-----	-----
Телефоны	47
-----	-----
Время работы	47
-----	-----
Адрес	47
-----	-----

ХАРАКТЕРИСТИКИ

Обзор

This 49 Grand Banks MY will be a rare find for her next owner. Little Red has had several upgrades in the last couple years that include new washer/dryer combo, 47" smart TV mounted in salon, new canvas with isinglass enclosure and aft Bimini extension on the bridge, sea deck on all the decks and walk ways, new bottom paint with blister job and barrier coat, recently redone wood transom, Vetus bow thruster, Garmin auto pilot & chart plotter. She has approximately 6,300 hrs on 3208 cats (one rebuilt in 2019) and about 4,200 hrs on the northern lights gen set. You can find her sitting in fresh water in a covered slip on the TN River in Scottsboro, AL. The MY has a great layout with king size Bed in the master stateroom, chart room/office space, and guest cabin forward with galley down. The lower helm has great access to the starboard walk way for locking. The previous owner loved her for 15 years before transferring to the current owner. She will make a great live aboard or enjoy cruising the great loop.

Основная информация

Тип судна: Моторная яхта

Модельный год: 1984

Год постройки: 1984

Страна: United States

Размеры

Длина общая: 49' 0" (14.94m)

Ширина: 15' 5" (4.70m)

Макс. осадка: 5' 2" (1.57m)

Скорость, вместимость и масса

Крейс. скорость: 10 Kts. (12 MPH)

Водоизмещение: 60000 Pounds

Вместимость воды: 500 Gallons

Объем топливного бака: 1000 Gallons

Размещение

Всего кают: 3

Всего коек: 3

Всего ком. состава: 2

Корпус и палуба

Материал корпуса: Fiberglass

Информация о двигателе

Двигатели: 2

Производитель: Caterpillar

Модель: 3208

Тип двигателя: Inboard

Тип топлива: Diesel

ПОДРОБНОЕ ОПИСАНИЕ

MAIN DESCRIPTION

This 49 Grand Banks MY will be a rare find for her next owner. Little Red has had several upgrades in the last couple years that include new washer/dryer combo, 47" smart TV mounted in salon, new canvas with isinglass enclosure and aft Bimini extension on the bridge, sea deck on all the decks and walk ways, new bottom paint with blister job and barrier coat, recently redone wood transom, Vetus bow thruster, Garmin auto pilot & chart plotter. She has approximately 6,300 hrs on 3208 cats (one rebuilt in 2019) and about 4,200 hrs on the northern lights gen set. You can find her sitting in fresh water in a covered slip on the TN River in Scottsboro, AL. The MY has a great layout with king size Bed in the master stateroom, chart room/office space, and guest cabin forward with galley down. The lower helm has great access to the starboard walk way for locking. The previous owner loved her for 15 years before transferring to the current owner. She will make a great live aboard or enjoy cruising the great loop.

LAYOUT

Grand Banks is famed for their high quality passagemakers capable of allowing you to safely travel the world's oceans. Dockside, this majestic girl has a salty profile with her lapstrake hull, steady sail mast, and gleaming stainless steel rails. The Bimini top and wind screens protect captain and crew from the elements. White sun screens around the cabin windows provide filtered light to the interior. Updated simulated teak decks allow sure footing all around. The flybridge enables all aboard an unobstructed 360 degree view of their voyage. The bridge has two bench seats and a captain's chair forward along with an aft bench seat. The enormous deck has plenty of room for two teak lounge chairs and would be a great place to dine under the stars.

The aft deck has high protective stainless steel hand rails with wind screens all around. Other features include two aft storage boxes, fender brackets, and enough room for a dinner party. Forward to port is the cabin entrance doorway.

The bow is easily reached along the wide decks port and starboard. There is a large capacity Ideal windlass, bench seat with storage below, pulpit with two anchor rollers, and the forward shore power plug.

The spacious cabin is a wonderful refuge from the wind and weather. A light vinyl overhead with recessed lighting includes teak handrails for safety underway. The sole is parque throughout. All the beautiful cabinets and wall coverings throughout the vessel are real wood with a light satin finish.

The salon has a large L-shaped leather settee to starboard aft. To port is a flip open dining table with storage below. There are numerous storage cabinets all around. The low helm is starboard

forward. A wealth of electronics and mechanical instrumentation provides the captain with much needed information for an enjoyable passage.

Four steps down going forward brings you into the galley laundry area. The galley appliances, massive storage, and counter space enable a chef to create a small meal to an elaborate dining experience.

Forward of the galley is the forward stateroom and second head area. Large hanging lockers, plentiful drawer space, and numerous portholes and deck hatches make for a lovely living space.

From the aft salon down four steps brings you to the aft companionway. Immediately to port is the 3rd stateroom which is set up as an office area complete with desk, reading lights, and storage cabinets.

All the way aft is the master stateroom with island king berth. Both sides of the bed have reading lights with built in night stands with drawers and storage. There is a writing desk to port and portholes all around. The large mirror forward along with the white vinyl overhead and recessed lighting make for a bright living area. Tall hanging lockers allow for plenty of storage space for a long voyage. A fully enclosed head with large tub also features Galley Maid electric head, medicine chest, and porcelain sink and vanity.

Galley and Laundry

- Galley Down
- (2) hand vacs
- Sharp convection microwave
- Double stainless steel sink with pull out faucet
- Black and Decker toaster oven
- 3 burner Princess stove top
- Spice rack
- Sanyo freezer
- (2) Grunert Cold Plate refrigerator systems
- 2nd Cold Plate freezer
- Splendide cloths washer and dryer
- (16) cabinets
- (5) drawers
- Detergent racks
- Bottle racks
- Dockside pressure water system

Electronics and Navigation Equipment

- Clock and barometer - salon

- Angle indicator - lower helm
- Danforth 5" compass - bridge
- Garmin CHC10 autopilot
- Garmin GPS map 4212 - bridge
- Clarion AM FM CD - bridge
- ICOM M304 VHF radio - bridge
- Intercom - bridge
- Garmin HD radar antenna
- Chart light - upper helm
- Remote speaker for VHF radio - bridge
- 3 outside stereo speakers
- Dell 14" monitor - lower helm
- Jensen stereo remote - lower helm
- Standard Horizon VHF radio - lower helm
- Danforth 6" compass - lower helm
- Sharp 40" TV - salon
- Hand held VHF

ELECTRICAL

- Northern Lights 12kw generator - 3979 hrs
- Forward deck 50 amp plug receptacle
- Aft deck 50 amp plug
- AC and DC distribution panels
- AC volt and amp gauges
- Battery charge indicator
- Refrigeration run by alternator switch or generator
- Pro Nautic 12/20 battery charger
- Battery isolators
- (3) battery switches
- (4) 8D batteries
- 50 amp shore power cord

Deck Equipment

- Bimini top - bridge
- Forward racked wind shield - bridge
- Stainless steel handrails all around with wind screens
- Mast with radar bracket and rigged for steady sail and dingy launch
- Pulpit with stainless steel bow rail
- Port and starboard hand rails with wood cap and covers
- Aft deck handrails with wind screens

- Forward and midship hawsepipes
- Two anchor brackets with rollers
- Danforth anchor with 150' rode
- Plow anchor with all chain rode
- Ideal windlass with 10" cleat and double capstan
- (2) chain lockers
- (2) 16" bow cleats
- Forward flag burgee
- Forward deck storage locker
- Single trumpet horn
- Forward single lens spotlight
- (3) forward deck hatches
- (2) forward cabin deck hand rails
- Forward windshield sunscreen
- All exterior decks replaced with simulated teak decking
- Forward deck stainless steel air vent from head
- (6) forward cabin sliding windows
- Port and starboard teak name boards with nav lights
- Port and starboard salon window sunscreens
- (4) 16" midship cleats
- (2) large port and starboard stern sampson posts
- (2) stainless steel aft deck fender brackets
- (2) aft deck fiberglass storage lockers
- (2) mast spreader lights
- Huge swim platform
- Swim ladder
- Transom shower
- Aft deck cabin hatch
- Aft deck courtesy lights
- Aft deck flag burgee
- Flybridge captain's helm seat
- Wooden ships steering wheel
- Port and starboard helm seat lockers
- Starboard bridge aft facing bench seat with storage
- Port bridge forward and aft facing bench seat with storage
- Bridge helm with two clear storage lockers with navigation
- Storage under forward helm
- (4) bridge cup holders
- Aft bridge deck bench seat
- (2) bridge deck teak lounge chairs
- 5 step ladder from platform to aft deck
- 5 step staircase from aft deck to bridge
- Aft deck doorway to salon with sunscreen
- Windshield wipers (3)

- Forward windshield vent

Mechanical Equipment

- (3) automatic bilge pumps
- Engine alarm
- Fresh water cooling system
- Overboard electric head
- Thermal acoustical insulation
- VDO gauges
- Stand up engine room
- Morse clutch and throttle controls
- Fireboy fire suppression system
- Rudder dial indicator
- Glendenning engine synchronizer
- Floscan meter lower helm
- Vetus bow thruster
- (2) Galley Maid head systems
- Seaward water heater
- Gryco sea strainers
- Racor engine and generator fuel filters
- Manual emergency bilge pump
- (2) engine room blowers
- Dripless shaft logs
- Engine room bench and vice
- RV style air conditioner over forward cabin allowing AC without running water through the vessel

Engines serviced April 2019 by diesel Don in AL.

Other Features, Construction, and Details of Overh

She is constructed on a solid fiberglass semi-displacement hull with hard chines, a deep fore foot and a long prop protected keel. The motor yacht has a very usable aft deck that the classic model doesn't offer. Many recent upgrades like newer air conditioning in bow, new soft goods in salon (2018), new vinyl flybridge (2017), bottom painted (Summer of 2019).

Salesperson's Comments

Take advantage of this highly desirable model that rarely comes on the market at a very attractive price! Call Charity Garey at 423-580-4330 for any questions or to learn more about Little Red!

EXCLUSIONS

Owner's personal effects.

DISCLAIMER

The Company offers the details of this vessel in good faith but cannot guarantee or warrant the accuracy of this information nor warrant the condition of the vessel. A buyer should instruct his agents, or his surveyors, to investigate such details as the buyer desires validated. This vessel is offered subject to prior sale, price change, or withdrawal without notice.

Исключения

При продаже яхты исключаются личные вещи владельца.

Отказ от ответственности

Компания предоставляет описание судна или яхты добросовестно, но не может гарантировать точность этой информации, а также не ручается за техническое состояние. Покупатель должен проинструктировать своих агентов или оценщиков исследовать представленную информацию более подробно, по собственному желанию. Продажа судна или яхты, изменение цены или снятие с продажи будет происходить без предварительного уведомления.

ФОТОГРАФИИ

1.2



**2 Little Red 1984 Grand Banks 49 MY
Starboard Profile**

**2.1 Little Red 1984 Grand Banks 49 MY stb
view**



2.2 Little Red 1984 Grand Banks 49 MY stern view 1



3 Little Red 1984 Grand Banks 49 MY Forward Deck 1



3.1 Little Red 1984 Grand Banks 49 MY Bow Pulpit



4 Little Red 1984 Grand Banks 49 MY Forward Deck 2



**5 Little Red 1984 Grand Banks 49 MY
Forward Deck 3**



**6 Little Red 1984 Grand Banks 49 MY port
side deck**



**7 Little Red 1984 Grand Banks 49 MY
Starboard Side Deck**



**7.1 Little Red 1984 Grand Banks 49 MY deck
fill**



8 Little Red 1984 Grand Banks 49 MY aft deck 1



8.1 Little Red 1984 Grand Banks 49 MY



9 Little Red 1984 Grand Banks 49 MY Aft deck to Flybridge



10 Little Red 1984 Grand Banks 49 MY Flybridge 1



**11 Little Red 1984 Grand Banks 49 MY
Flybridge 1.2**



**12 Little Red 1984 Grand Banks 49 MY
Flybridge 1.1**



**13 Little Red 1984 Grand Banks 49 MY
Flybridge 1.3**



**13.1 Little Red 1984 Grand Banks 49 MY
upper helm autopilot**



**13.2 Little Red 1984 Grand Banks 49 MY
upper helm bow thruster**



**13.3 Little Red 1984 Grand Banks 49 MY
upper helm garmin 1**



**13.4 Little Red 1984 Grand Banks 49 MY
upper helm garmin 2**



**13.5 Little Red 1984 Grand Banks 49 MY
upper helm garmin 3**



**13.6 Little Red 1984 Grand Banks 49 MY
upper helm ignition switches**



**13.7 Little Red 1984 Grand Banks 49 MY
upper helm rudder indicator**



**14 Little Red 1984 Grand Banks 49 MY
Flybridge 2**



**15 Little Red 1984 Grand Banks 49 MY
Flybridge 3**



**16 Little Red 1984 Grand Banks 49 MY
Flybridge 4**



**17 Little Red 1984 Grand Banks 49 MY
hinged mast 1**



**18 Little Red 1984 Grand Banks 49 MY
Hinged mast 2**



**19 Little Red 1984 Grand Banks 49 MY Salon
1**



20 Little Red 1984 Grand Banks 49 MY Salon

2



21 Little Red 1984 Grand Banks 49 MY Salon

3

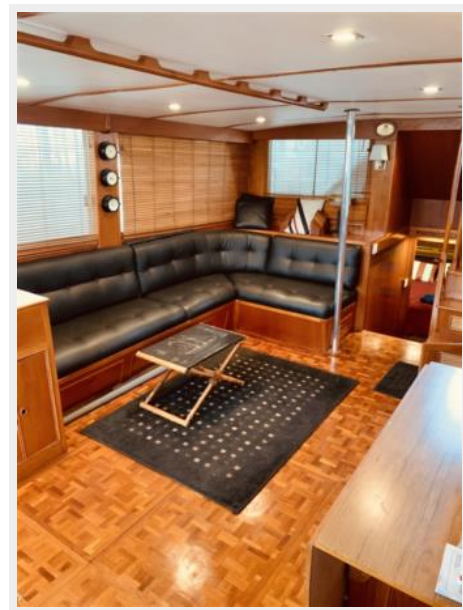


23 Little Red 1984 Grand Banks 49 MY Salon

5

22 Little Red 1984 Grand Banks 49 MY Salon

4



24 Little Red 1984 Grand Banks 49 MY Salon

6



25 Little Red 1984 Grand Banks 49 MY Salon

7



26 Little Red 1984 Grand Banks 49 MY Salon 27 Little Red 1984 Grand Banks 49 MY Salon

8



9



**28 Little Red 1984 Grand Banks 49 MY Salon 29 Little Red 1984 Grand Banks 49 MY Salon
10 from side entry door**



**29.1 Little Red 1984 Grand Banks 49 MY
dinette**



**30 Little Red 1984 Grand Banks 49 MY Salon
Pano 1**



31 Little Red 1984 Grand Banks 49 MY side entry door



31 Little Red 1984 Grand Banks 49 MY Salon Pano 2



32 Little Red 1984 Grand Banks 49 MY lower helm 1



**34 Little Red 1984 Grand Banks 49 MY
Lower Helm Bow Thruster**



**35 Little Red 1984 Grand Banks 49 MY
Lower Helm FloScan**



**36 Little Red 1984 Grand Banks 49 MY
Lower Helm Garmin 1**



**37 Little Red 1984 Grand Banks 49 MY
Lower Helm Garmin 2**



**38 Little Red 1984 Grand Banks 49 MY
Lower Helm VHF**



**39 Little Red 1984 Grand Banks 49 MY lower
helm warning lights**



**40 Little Red 1984 Grand Banks 49 MY
Lower Helm**



**41 Little Red 1984 Grand Banks 49 MY
Liquor Cabinet 1**



42 Little Red 1984 Grand Banks 49 MY liquor cabinet 2



43 Little Red 1984 Grand Banks 49 MY Galley 8



44 Little Red 1984 Grand Banks 49 MY Galley 1



44.1 Little Red 1984 Grand Banks 49 MY refrigerator power control 1



**45 Little Red 1984 Grand Banks 49 MY
Galley 2**



**45.1 Little Red 1984 Grand Banks 49 MY
Washer Dryer Combo**



**46 Little Red 1984 Grand Banks 49 MY
Galley 3**



**47 Little Red 1984 Grand Banks 49 MY
Galley 4**



**48 Little Red 1984 Grand Banks 49 MY
Galley 5**



**49 Little Red 1984 Grand Banks 49 MY
Galley 6**



**50 Little Red 1984 Grand Banks 49 MY
Galley 7**



**51 Little Red 1984 Grand Banks 49 MY Fwd
Cabin 1**



**52 Little Red 1984 Grand Banks 49 MY Fwd
Cabin 2**



**53 Little Red 1984 Grand Banks 49 MY Fwd
Cabin 3**



**54 Little Red 1984 Grand Banks 49 MY Fwd
Head 1**



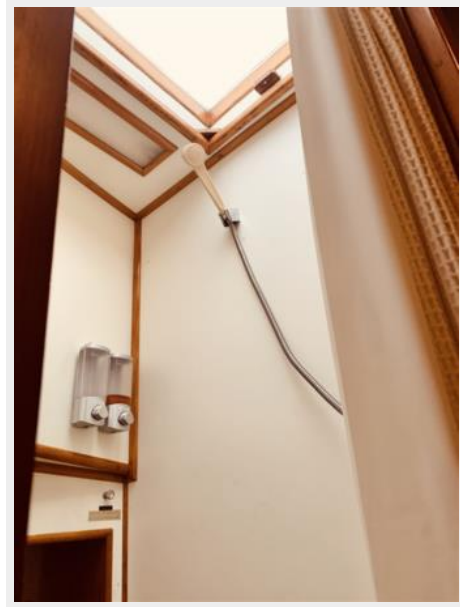
**55 Little Red 1984 Grand Banks 49 MY fwd
head 2**



56 Little Red 1984 Grand Banks 49 MY Fwd
Head 3



57 Little Red 1984 Grand Banks 49 MY Fwd
shower room 1



58 Little Red 1984 Grand Banks 49 MY Fwd 59 Little Red 1984 Grand Banks 49 MY Office
Shower Room 2 1



**60 Little Red 1984 Grand Banks 49 MY office
2**



**61 Little Red 1984 Grand Banks 49 MY Aft
Cabin 1**



**62 Little Red 1984 Grand Banks 49 MY aft
cabin 2**



**63 Little Red 1984 Grand Banks 49 MY aft
cabin 3**



**64 Little Red 1984 Grand Banks 49 MY aft
cabin 4**



**65 Little Red 1984 Grand Banks 49 MY aft
cabin 5**



**67 Little Red 1984 Grand Banks 49 MY aft
head 1**

**66 Little Red 1984 Grand Banks 49 MY aft
cabin 6**



**68 Little Red 1984 Grand Banks 49 MY Aft
Bath tub**



**69 Little Red 1984 Grand Banks 49 engine
room access**



**70 Little Red 1984 Grand Banks 49 MY
Engine Room Access 1**



**71 Little Red 1984 Grand Banks 49 MY
Engine Room 1**



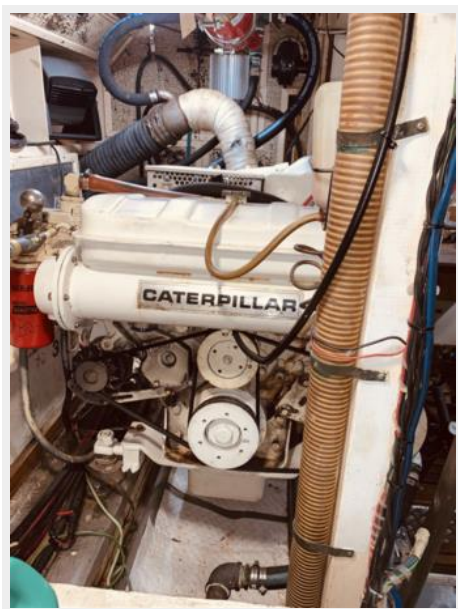
**72 Little Red 1984 Grand Banks 49 MY
Engine Room 2**



**73 Little Red 1984 Grand Banks 49 MY
Engine Room 3**



**74 Little Red 1984 Grand Banks 49 MY
Engine Room 4**



**76 Little Red 1984 Grand Banks 49 MY
Engine Room 6**



**77 Little Red 1984 Grand Banks 49 MY
Engine Room 7**



**78 Little Red 1984 Grand Banks 49 MY
Engine Room 8**



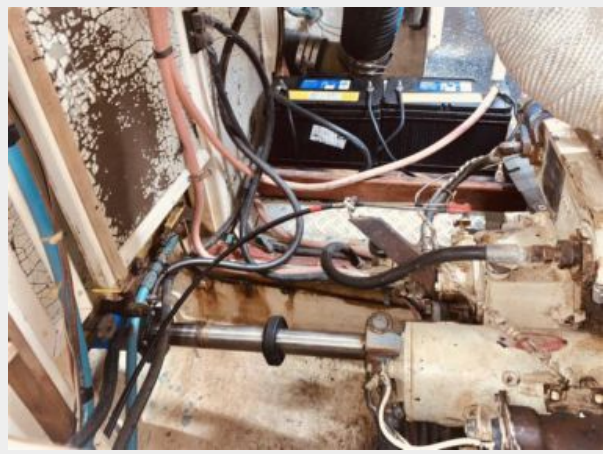
**79 Little Red 1984 Grand Banks 49 MY
Engine Room 9**



**80 Little Red 1984 Grand Banks 49 MY
Engine Room 10**



**81 Little Red 1984 Grand Banks 49 MY
Engine room 11**



**82 Little Red 1984 Grand Banks 49 MY
Engine Room 12**



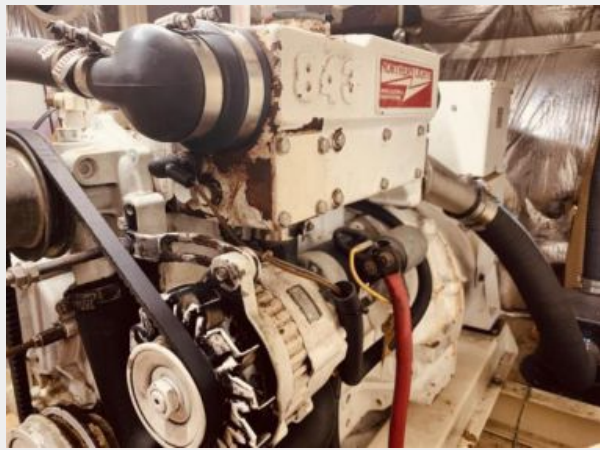
**83 Little Red 1984 Grand Banks 49 MY
Engine Room 13**



**84 Little Red 1984 Grand Banks 49 MY
Engine Room 14**



**85 Little Red 1984 Grand Banks 49 MY
Engine room 15**



**86 Little Red 1984 Grand Banks 49 MY
Engine Room 16**



**87 Little Red 1984 Grand Banks 49 MY
Engine Room 17**



**88 Little Red 1984 Grand Banks 49 MY
Engine Room 18**



**89 Little Red 1984 Grand Banks 49 MY
Engine Room 19**



**90 Little Red 1984 Grand Banks 49 MY
Engine Room 20**



**91 Little Red 1984 Grand Banks 49 MY
Engine Room 21**



**92 Little Red 1984 Grand Banks 49 MY fuel
manifold**



**92.1 Little Red 1984 Grand Banks 49 MY
Battery Switch**



**93 Little Red 1984 Grand Banks 49 MY
generator 1**



**94 Little Red 1984 Grand Banks 49 MY
generator controls**



**95 Little Red 1984 Grand Banks 49 MY
generator hour meter**



96 Little Red 1984 Grand Banks 49 MY Generator



97 Little Red 1984 Grand Banks 49 MY AC Panel 1



98 Little Red 1984 Grand Banks 49 MY AC Panel 2



99 Little Red 1984 Grand Banks 49 MY DC Panel 1



100 Little Red 1984 Grand Banks 49 MY DC panel 2



101 Little Red 1984 Grand Banks 49 MY Central Vac



102 Little Red 1984 Grand Banks 49 MY aft power hook up 1



103 Little Red 1984 Grand Banks 49 MY plaque



104 Little Red 1984 Grand Banks 49 MY insignia



КОНТАКТЫ

Андрей Шестаков (Andrey Shestakov) – ведущий яхтенный брокер отдела продаж яхт и судов компании Shestakov Yacht Sales Inc. Официальный представитель Shestakov Yacht Sales Inc. для русскоговорящих клиентов в центральном офисе компании в Майами/Форт Лодердейл/Флорида/США.

Контактная информация

Email: andrey@shestakovyachtsales.com

Web: shestakovyachtsales.com

Телефоны

Краснодарский край: **+7(918)465-66-44**

США, Майами, Флорида: **+1(954)274-4435**

Время работы

Понедельник – Суббота: **9:00 - 21:00**
EDT

Воскресенье: **Закрито**

Адрес



Harbour Towne Marina, 850 NE 3rd St,
STE 213, Dania, FL 33004